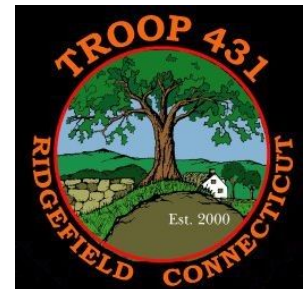




Ridgebury Elementary School Educational Trail Final Report



Joseph Isaac
Troop 431





Purpose of the Educational Trail

❖ To help students appreciate the world around them

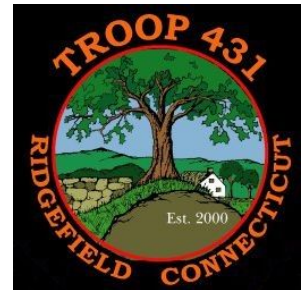
- Ridgebury School has a vast ecosystem
- Many opportunities for learning
 - *Many different types of trees/shrubs*
 - ◆ including invasive species
 - *Home to numerous animals and insects*

❖ Creation of educational trail

- Place laminated signs along one of the trails
- Additional sign(s) at pond area
 - *Signs will be similar to trails in Stamford & Wilton*

❖ Trail information source

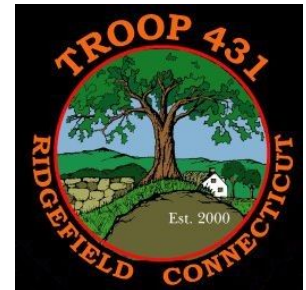
- 2003 study of Ridgebury ecosystem
- State & University Public Extensions





Timeline of the Educational Trail

- ❖ June 2019 - Discuss plan w/Mr. Palladino
- ❖ Summer 2019 - Research educational trails
- ❖ Winter 2019 - Discuss plan w/Mr. Cronin
- ❖ COVID-19
- ❖ Spring 2020 - Create Proposal
- ❖ Summer-Fall 2020 - Graphics work
- ❖ Fall 2020 - Install Posts
- ❖ Spring 2021 - Install signs
- ❖ May 2021 - Trail Complete

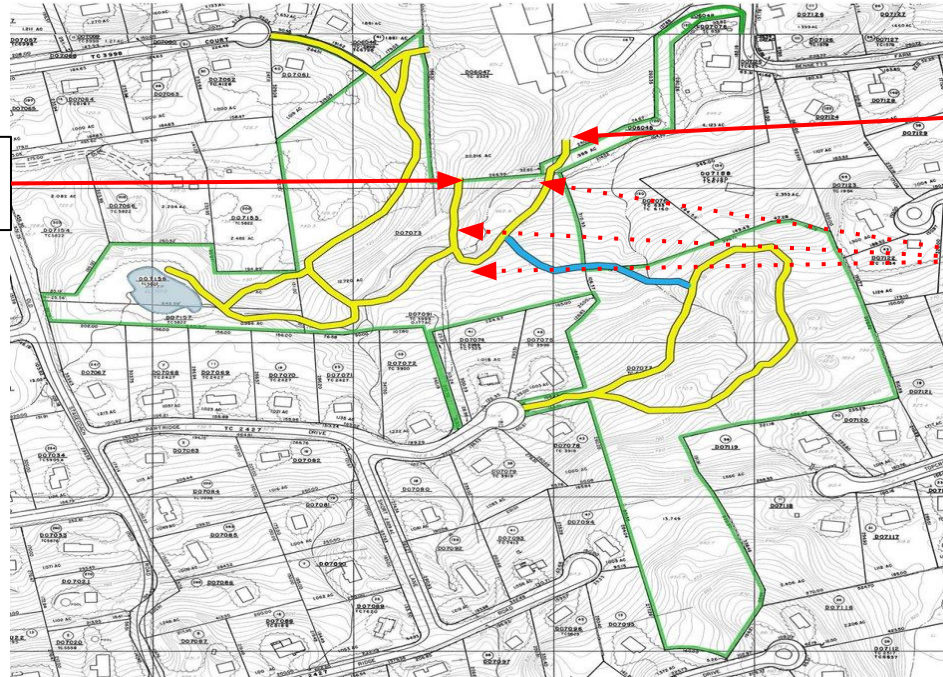




Sign Placement on Trail

Ridgebury Slopes/ Peterson Gorge

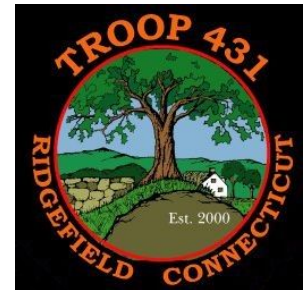
Large
Sign at
exit



Large Sign
at entrance

Several signs
along trail

- ❖ 2 large sign at entrance/exit
- ❖ 20 smaller signs along trail
 - originally 10-12
- ❖ Along horseshoe trail closest to school (¼ mile trail)

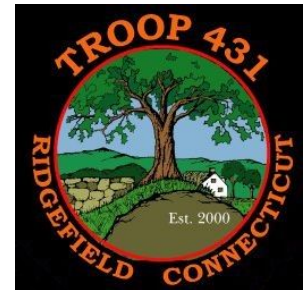




Sign placement at pond



- ❖ 2 large signs at pond area
- ❖ Scouts carved out area
 - Phragmites cut back
 - Pond now clearly visible

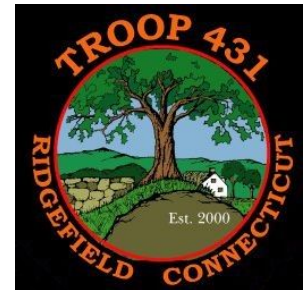




Example Of Large Sign

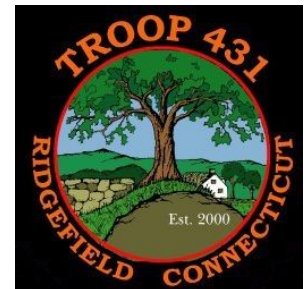


- ❖ Large signs to be placed at both entrances of the trail
- ❖ Information to include multiple points of interest





Examples of Smaller Signs

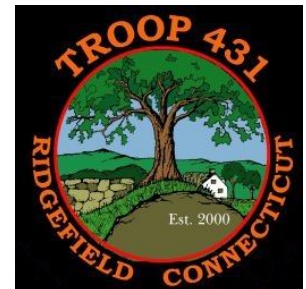




Project Cost

- ❖ **Posts & Mounting Hardware (Ridgefield Supply)**
 - Budget = \$700.00 (original approved \$350)
 - Actual Cost = \$563.30
 - ***Conservation Commission***

- ❖ **Signs (Pannier Graphics)**
 - \$3,500
 - ***Ridgebury PTA & Private Donations***





Total Project Hours

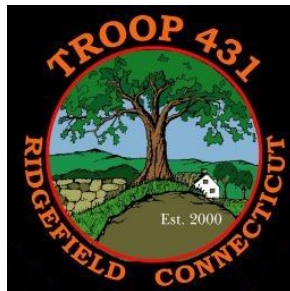
❖ 533 Total Hours

❖ Graphics - 225 hours

- Skyler & Priscilla Prentice
- Ms. Snow, Mr Keller & Mr Cronin

❖ Total Scout Hours - 175 hours

- 3 Major Workdays
- 3 Smaller Workdays





Quick Trail Walk Video

