



TOWN OF RIDGEFIELD

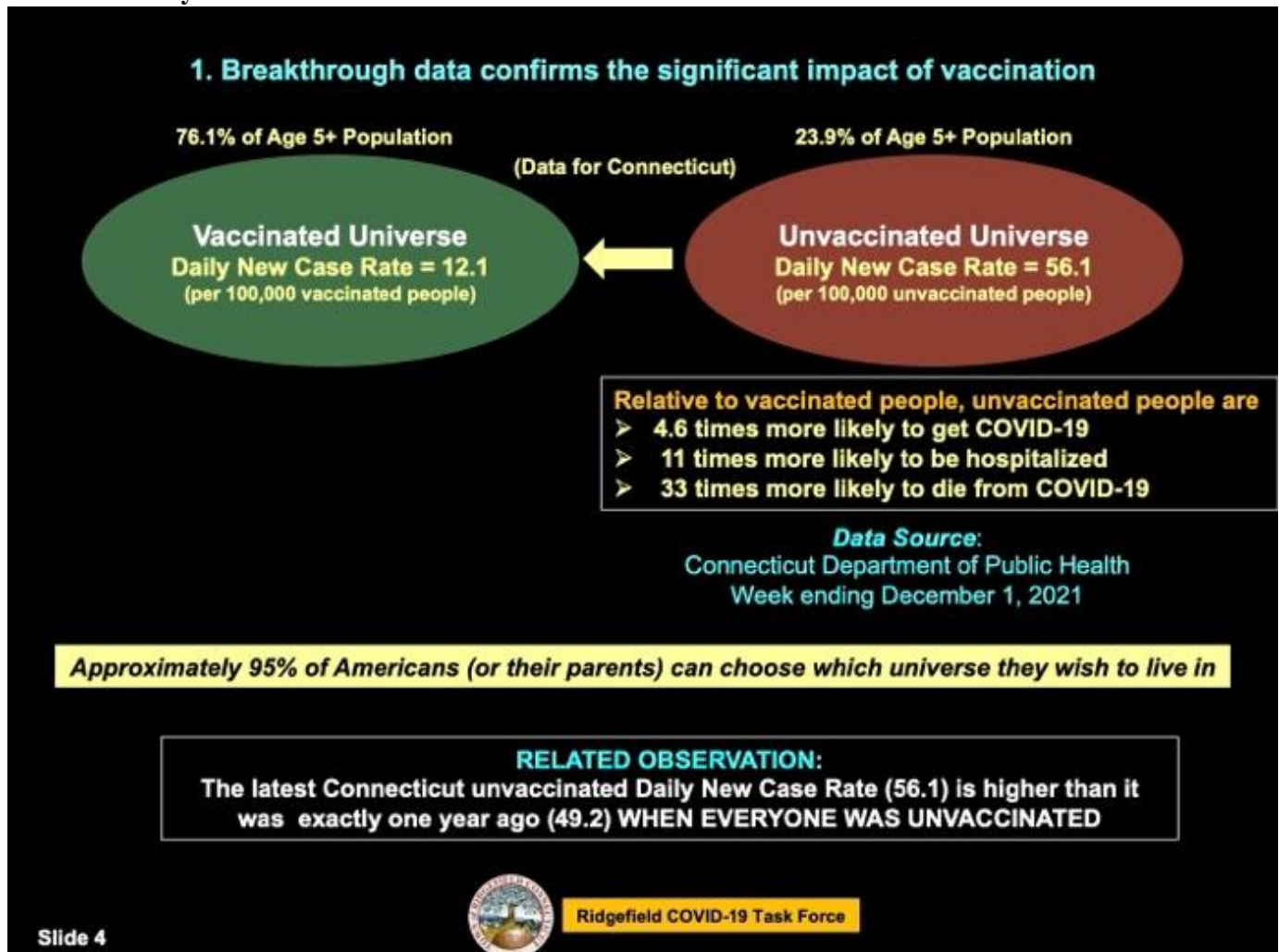
Office of the First Selectman

Contact: First Selectman Rudy Marconi
selectman@ridgefieldct.org or pio@ridgefielddoem.org

FOR IMMEDIATE RELEASE

UNVACCINATED-UNPROTECTED

Ridgefield, CT: December 4, 2021: The latest data compiled for the Ridgefield COVID Task force confirms what experts have been saying all along. **Relative to vaccinated people, unvaccinated people are 4.6 times more likely to get COVID, 11 times more likely to become hospitalized and 33 times more likely to die from it.**



This is one of the daily slides provided by COVID Task Force Member and data scientist Dr. Rick Lawrence. Updates on COVID 19 are posted daily on www.ridgefieldct.org

-more-

RIDGEFIELD, CT: DEC. 12/4/21 (continued)

Masks are currently not mandated for the vaccinated except in certain situations, however, First Selectman Rudy Marconi asks that residents opt in when indoors in settings outside the home. For supporting data, please visit the town web site at www.ridgefieldct.org.

“Please also respect the fact that many local businesses require masks for everyone, vaccinated or not. This is the time to support their efforts to protect their employees and customers,” says Marconi.

- For complete details including specific situations where masks are required by all go to: [CT State Mask Mandates](#): *(Note: the State website includes specific settings where masks are required)*: Vaccinated not required to wear masks, unvaccinated must wear masks, masks are required to be worn by everyone in certain settings such as healthcare facilities, facilities housing vulnerable populations, public and private transit, correctional facilities, schools, and childcare.
- **Municipal leaders have the option of requiring masks to be worn by everyone in indoor public places regardless of vaccination status within their respective towns and cities.**

###

Sign Up for Ridgefield Alerts at www.RidgefieldAlerts.com to receive emergency notifications. This supplements CTAlert with added information vital to Ridgefield. There is an opt-in for additional community notifications. Please use a different username than you used for CTAlert. For questions contact pio@ridgefieldoem.org or call 203-431-2700. Share the bar code below with family and friends:

