

Ridgefield COVID Report

Ridgefield COVID-19 Task Force



Data downloaded from
<https://data.ct.gov/browse?category=Health+and+Human+Services>

Data downloaded as of Wednesday, December 9, 2020 at 4PM
This reflects data through Tuesday, December 8, 2020

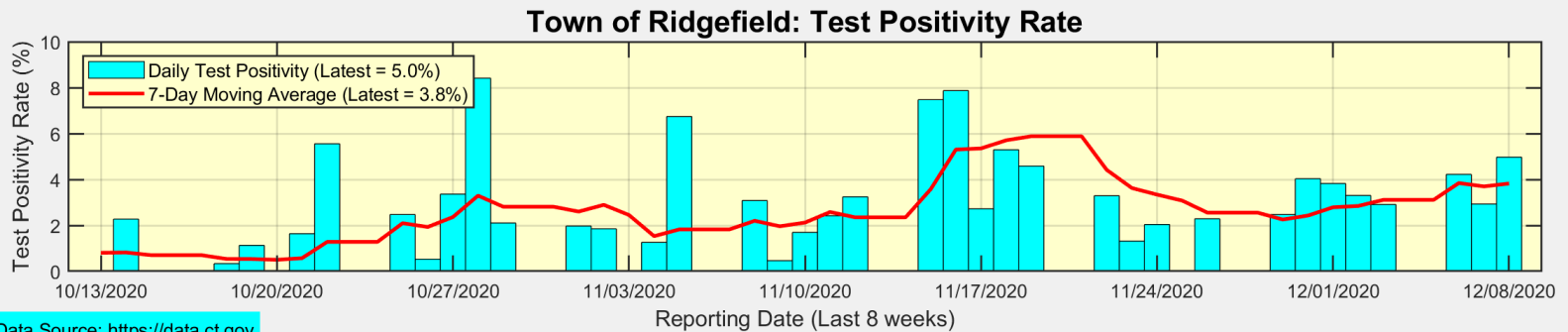
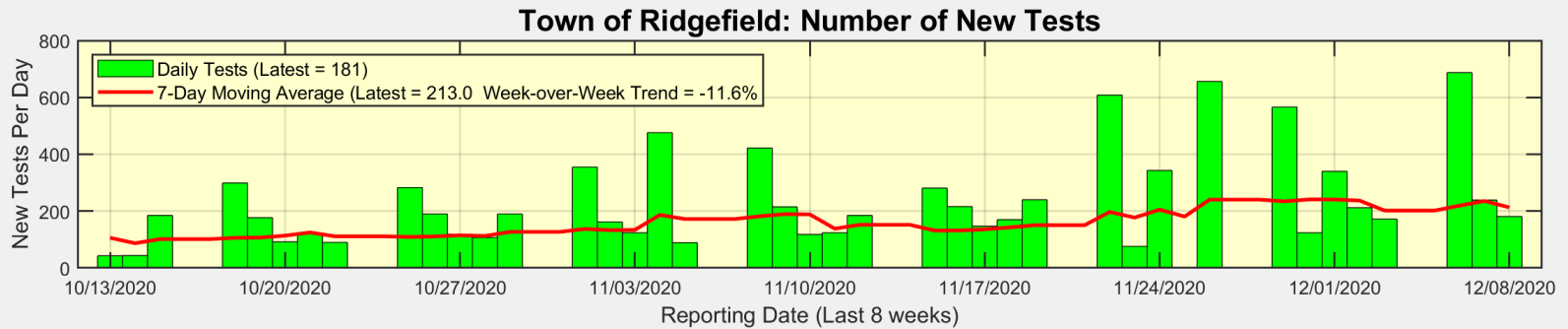
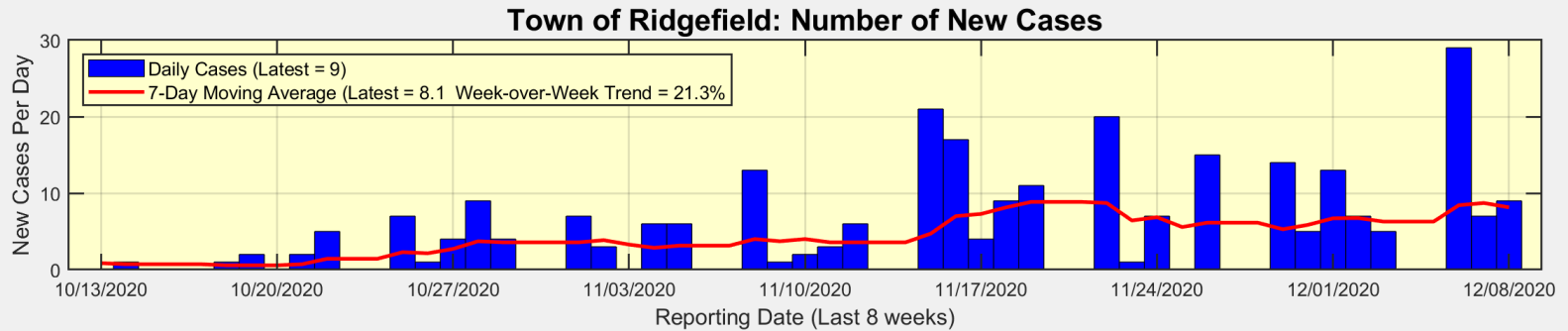
Ridgefield Summary

Wednesday, December 9, 2020

- There were 9 new cases reported in Ridgefield on Tuesday
 - The 7-day moving average of daily new cases is 8.1
- This translates to a New Case Rate of 32.6 new cases per 100,000 residents
 - The Fairfield County New Case Rate is 78.8 new cases per 100,000 residents
 - Ridgefield remains at the State **Red** Alert Level (because our New Case Rate is over 15)
- The Test Positivity Rate for Ridgefield (averaged over 7 days) is 3.8%
 - The Test Positivity Rate for Fairfield County is 7.3%
- Our data science confirms CDC and other studies
 - ***Wearing a Mask Reduces COVID Case Rates***



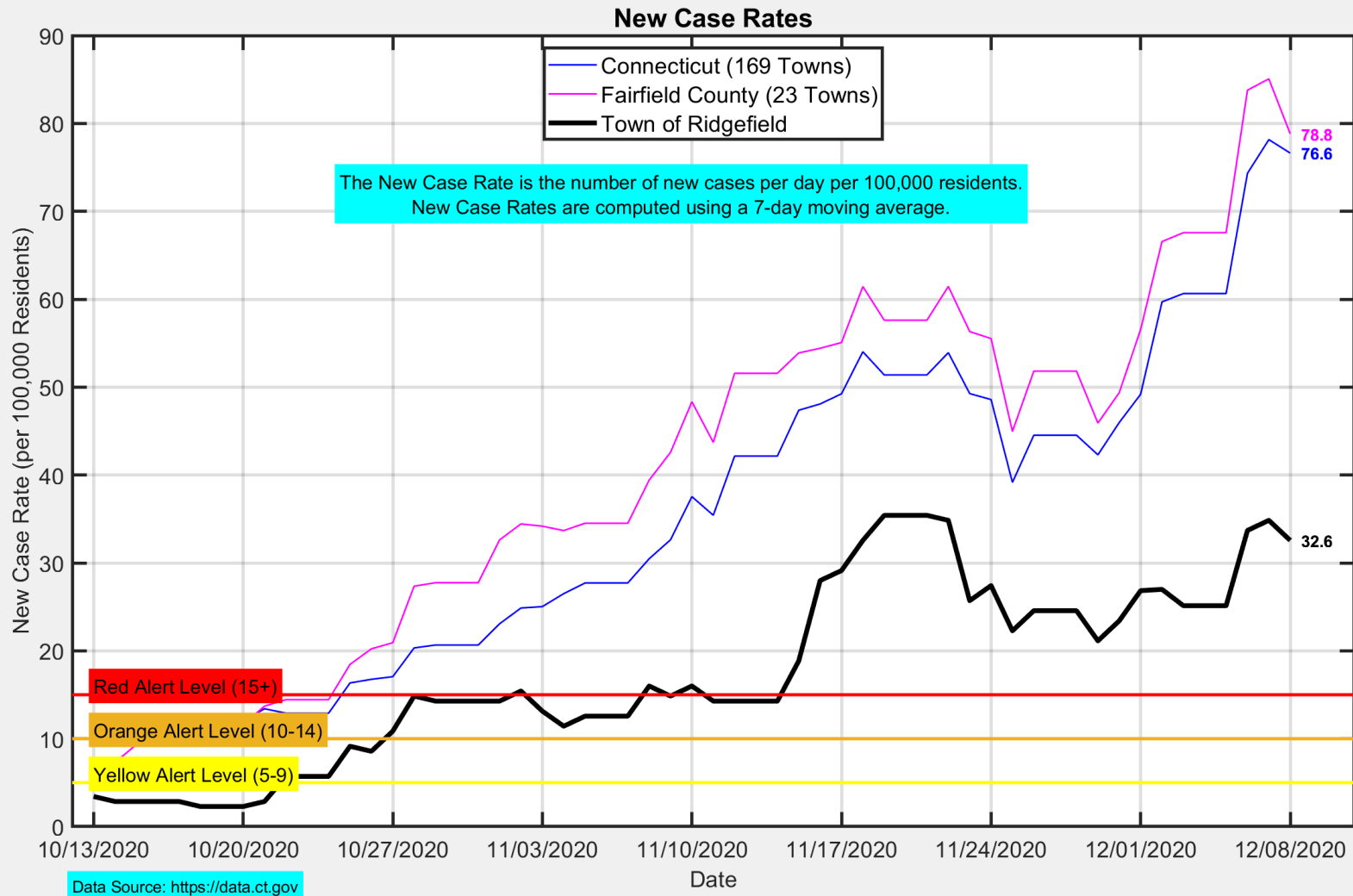
There were 9 new cases reported in Ridgefield yesterday



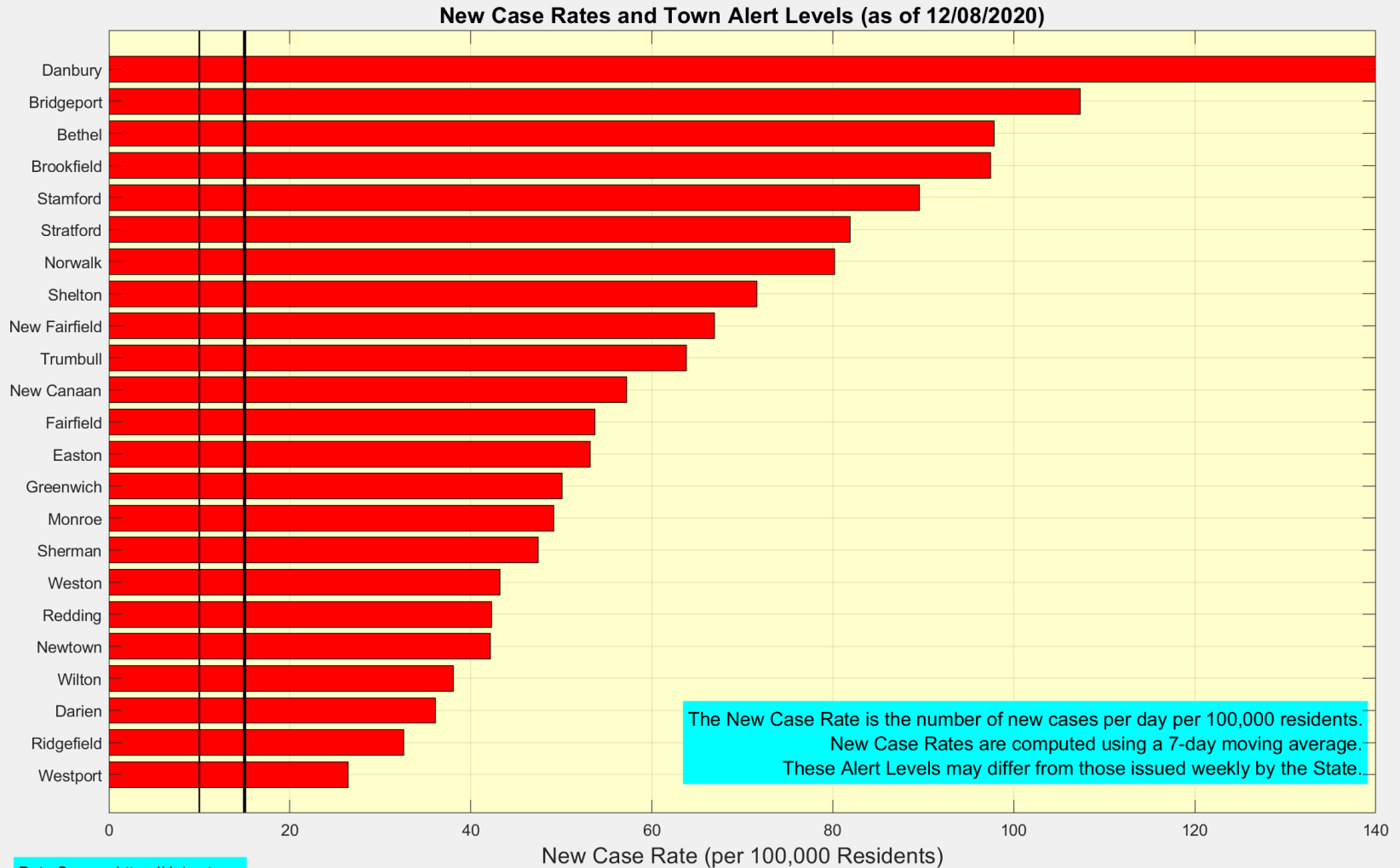
Data Source: <https://data.ct.gov>



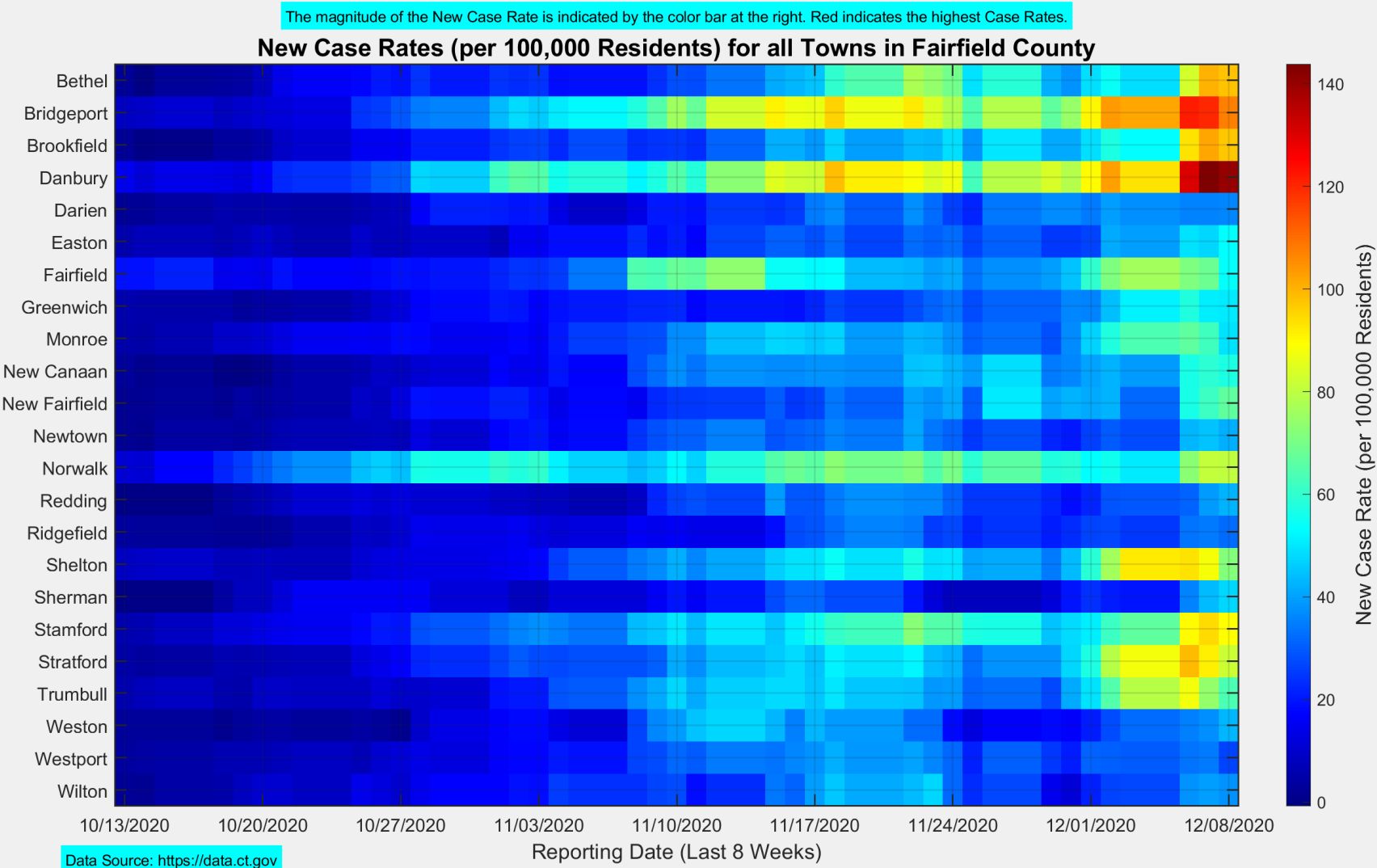
The New Case Rate in Ridgefield decreased slightly to 32.6



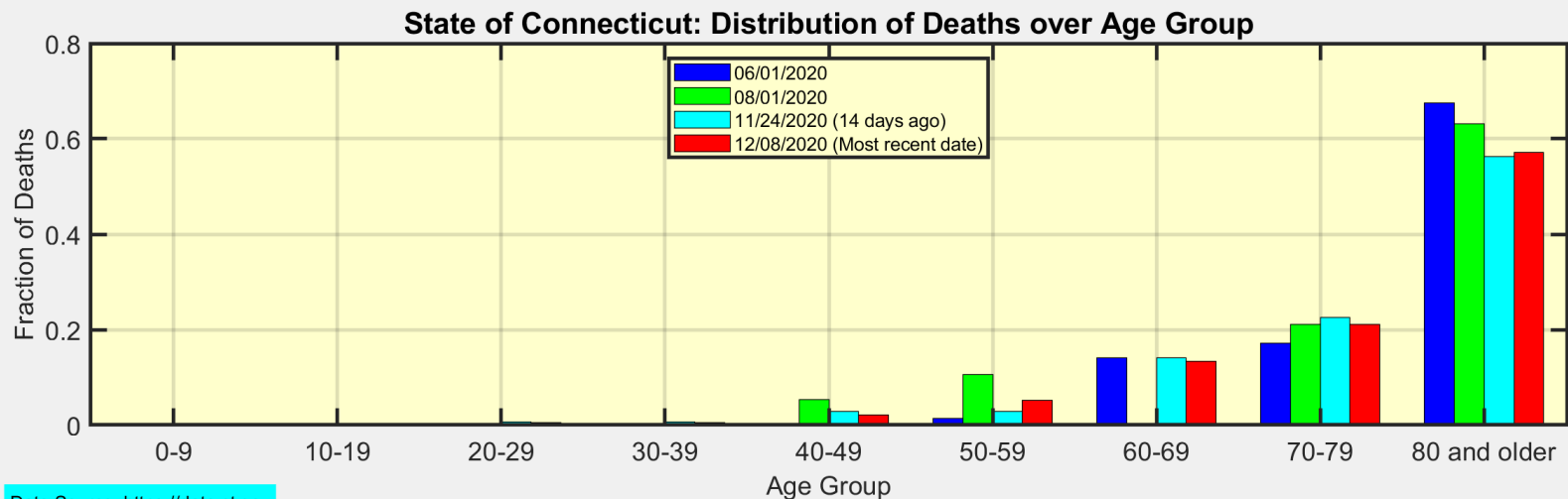
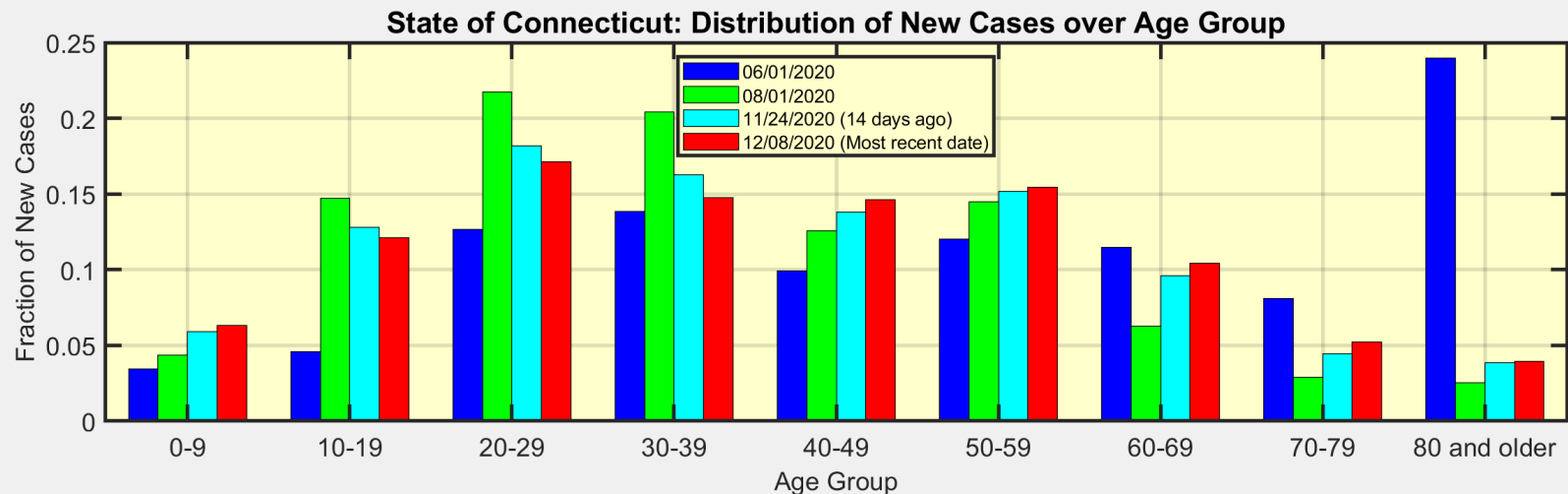
Ridgefield continues to have one of the lower New Case Rates in Fairfield County



This heat map shows the progression of New Case Rates for all towns in Fairfield County



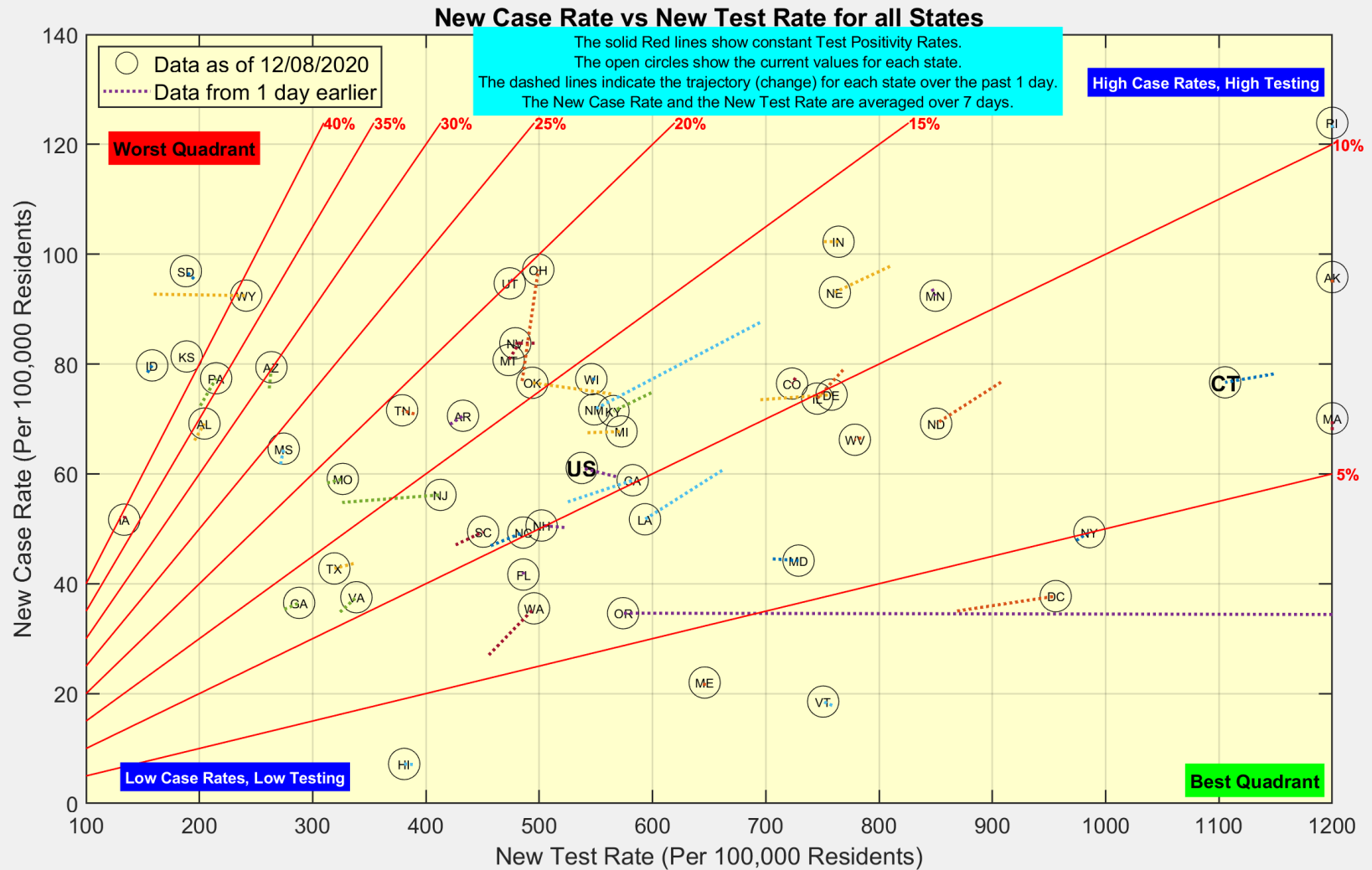
These are the distributions of New Cases and Deaths over age group for the State of Connecticut



Data Source: <https://data.ct.gov>



Connecticut continues to do more testing than most states ... Test Positivity remained constant

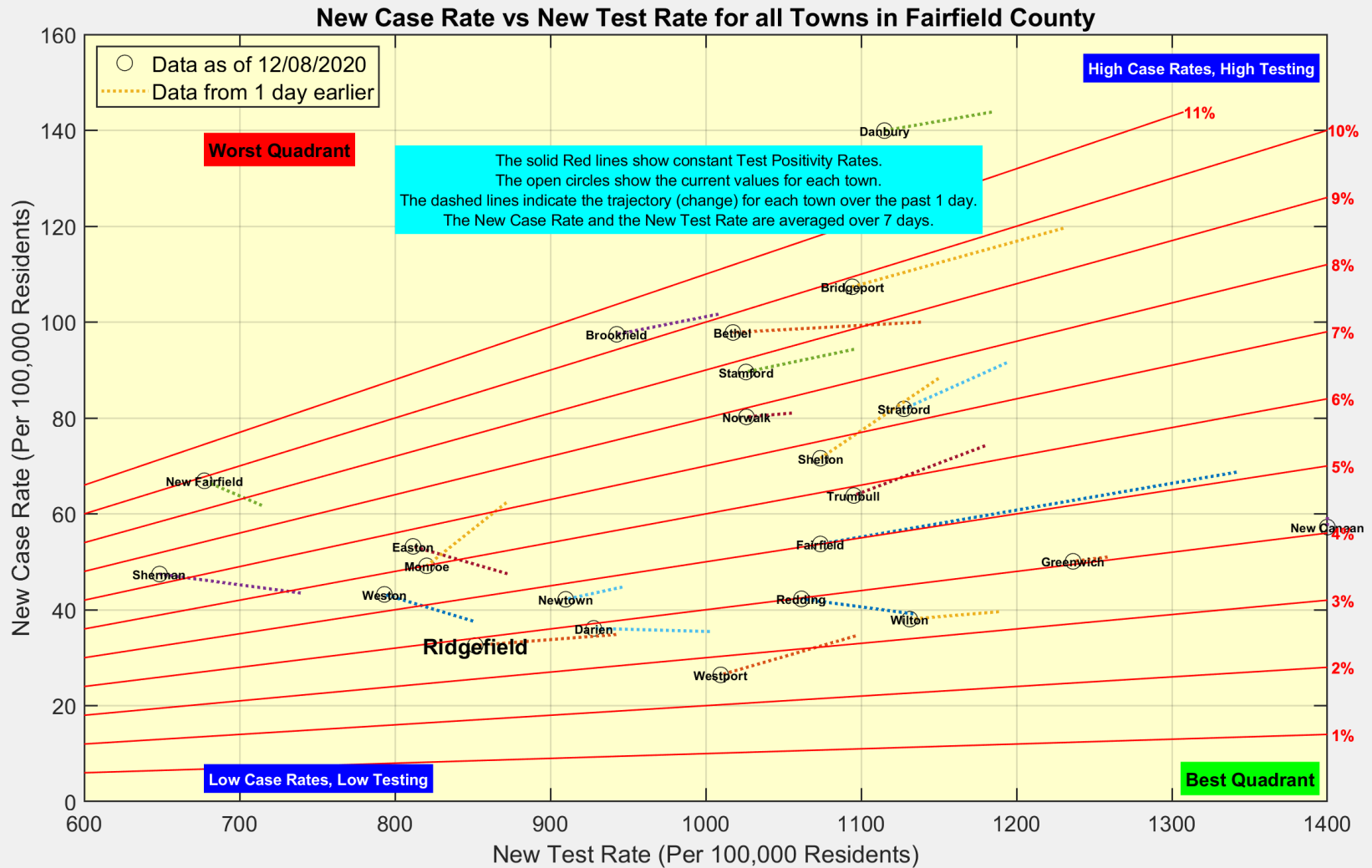


Data Source: <https://covidtracking.com/data/api>



Ridgefield COVID-19 Task Force

Testing decreased in most Towns, with New Case Rates relatively stable



Data Source: <https://data.ct.gov>



Ridgefield COVID-19 Task Force