

# Ridgefield COVID Report

Ridgefield COVID-19 Task Force



Data downloaded from  
<https://data.ct.gov/browse?category=Health+and+Human+Services>

Data downloaded as of Monday, December 7, 2020 at 4PM  
This reflects data through Sunday, December 6, 2020

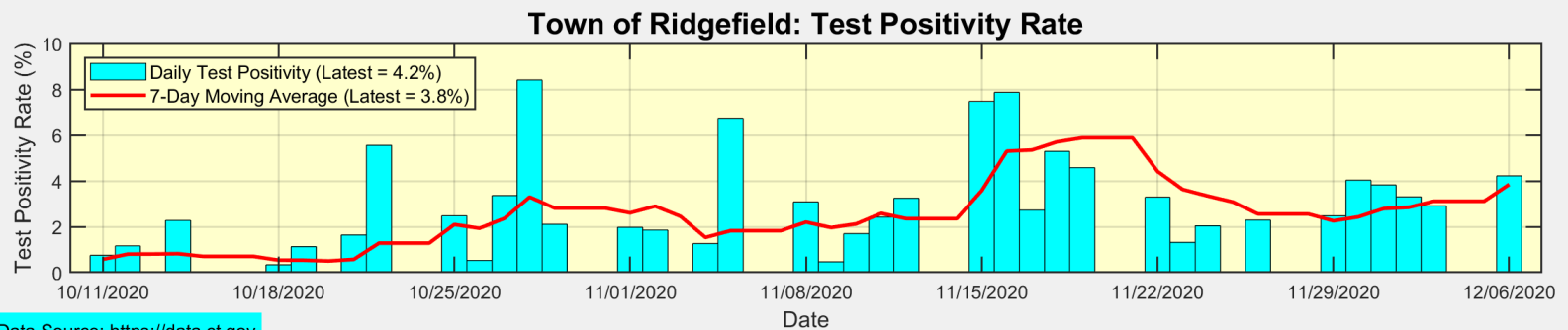
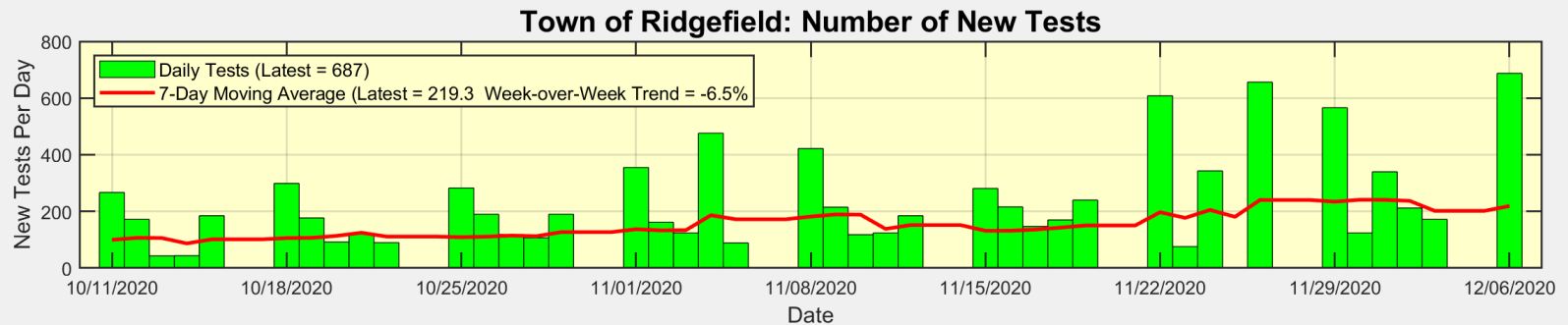
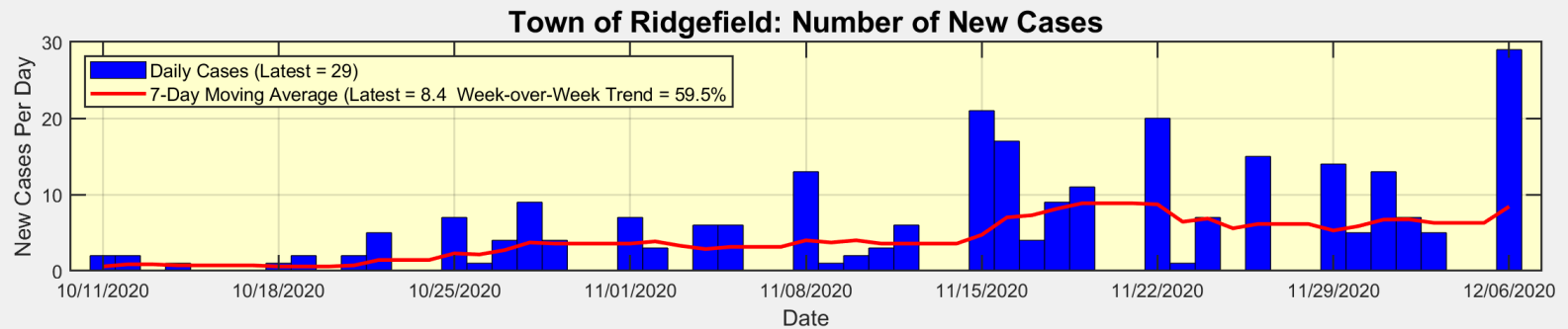
## Ridgefield Summary

Monday, December 7, 2020

- There were 29 new cases in Ridgefield over the last 3 days (Friday, Saturday, Sunday)
  - The 7-day moving average of daily new cases is 8.4
- This translates to a New Case Rate of 33.7 new cases per 100,000 residents
  - The Fairfield County New Case Rate is 83.8 new cases per 100,000 residents
  - Ridgefield remains at the State **Red** Alert Level (because our New Case Rate is over 15)
- Ridgefield testing decreased by 6% week over week
  - Testing across Fairfield County increased by 40% week over week
- The Test Positivity Rate for Ridgefield (averaged over 7 days) is 3.8%
  - The Test Positivity Rate for Fairfield County is 7.2%
- Our data science confirms CDC and other studies
  - ***Wearing a Mask Reduces COVID Case Rates***



There were 29 new cases reported in Ridgefield over the last 3 days (Friday, Saturday, Sunday)

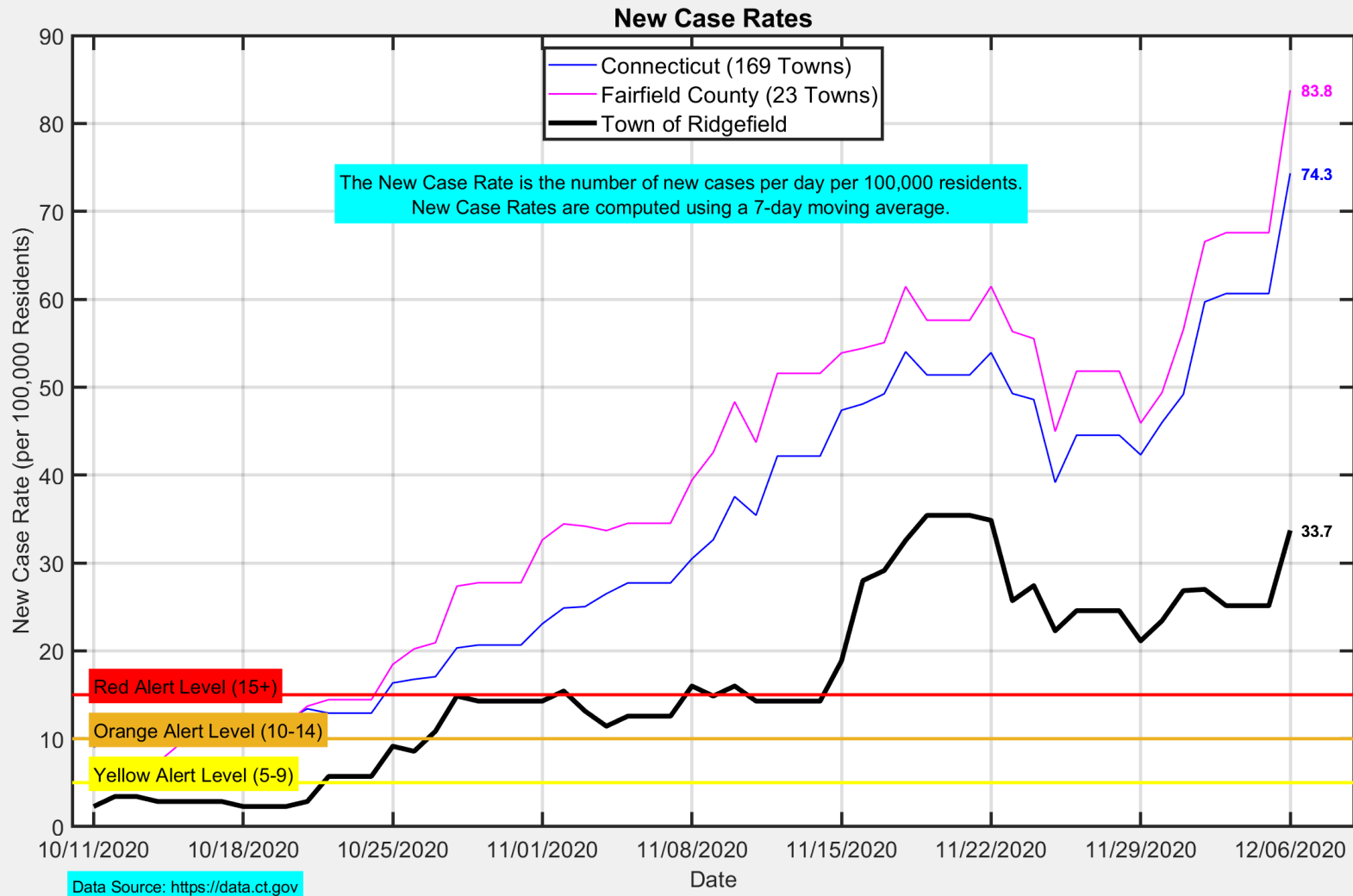


Data Source: <https://data.ct.gov>

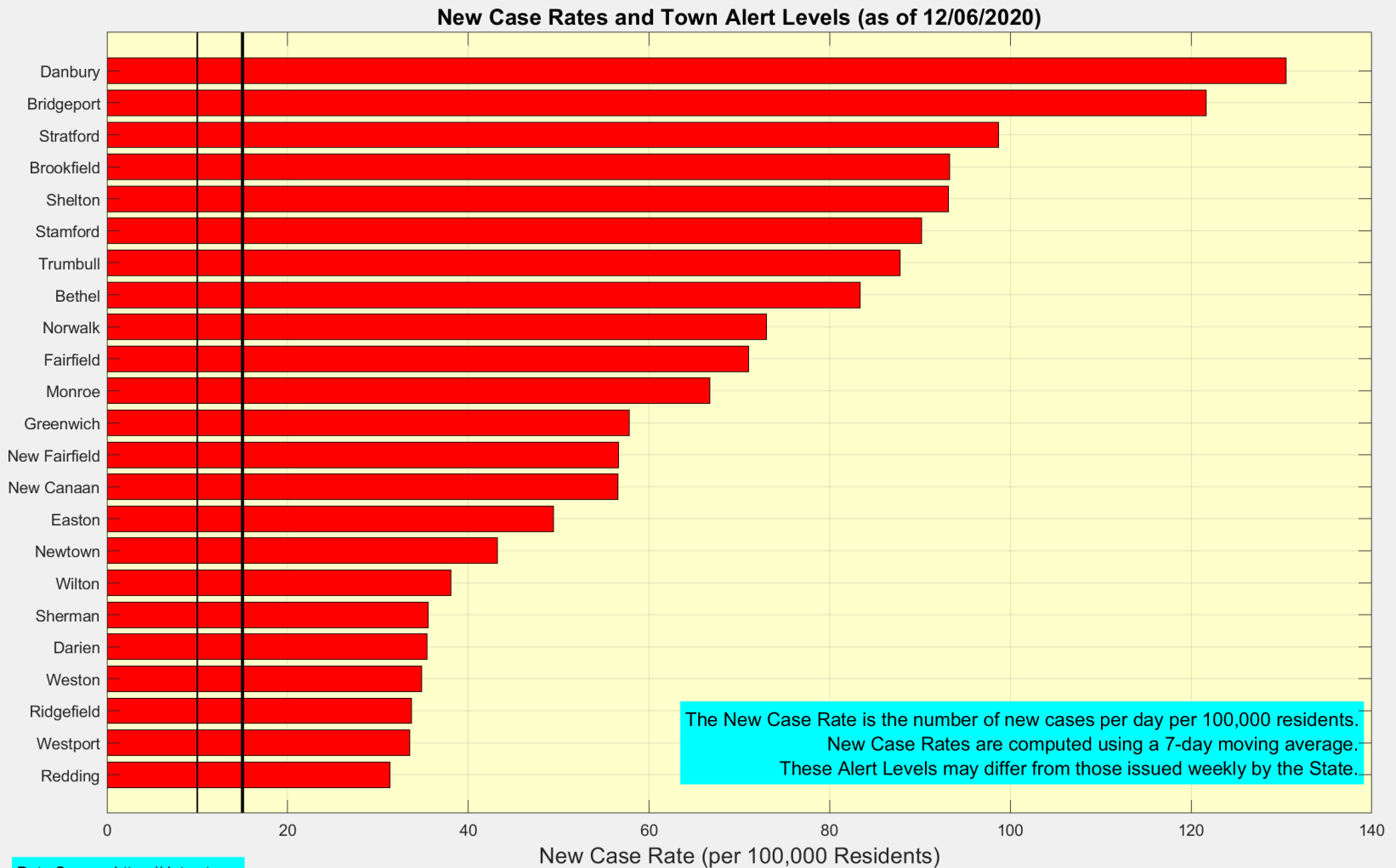


Ridgefield COVID-19 Task Force

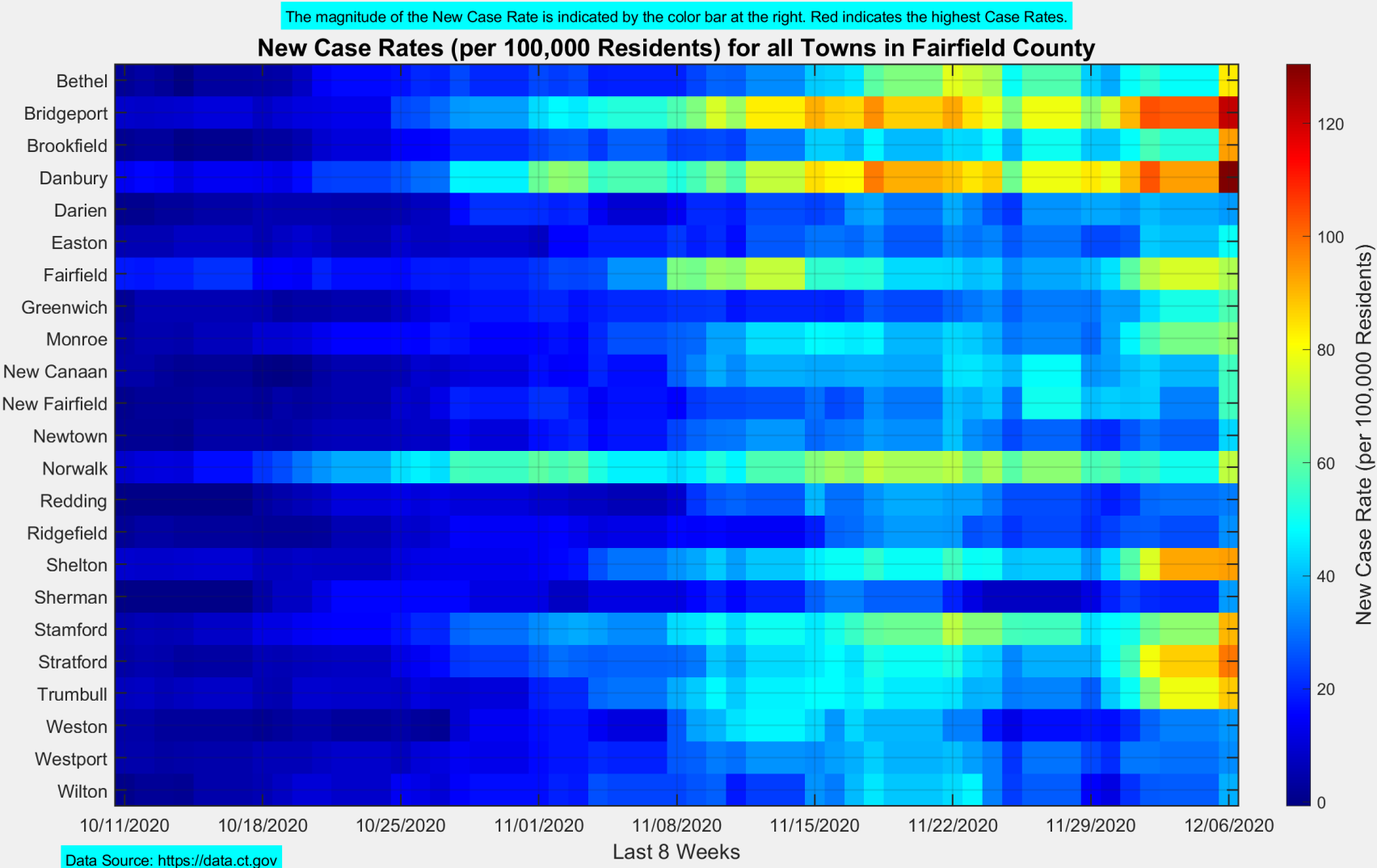
# The New Case Rates increased in Ridgefield as well as at the County and State levels



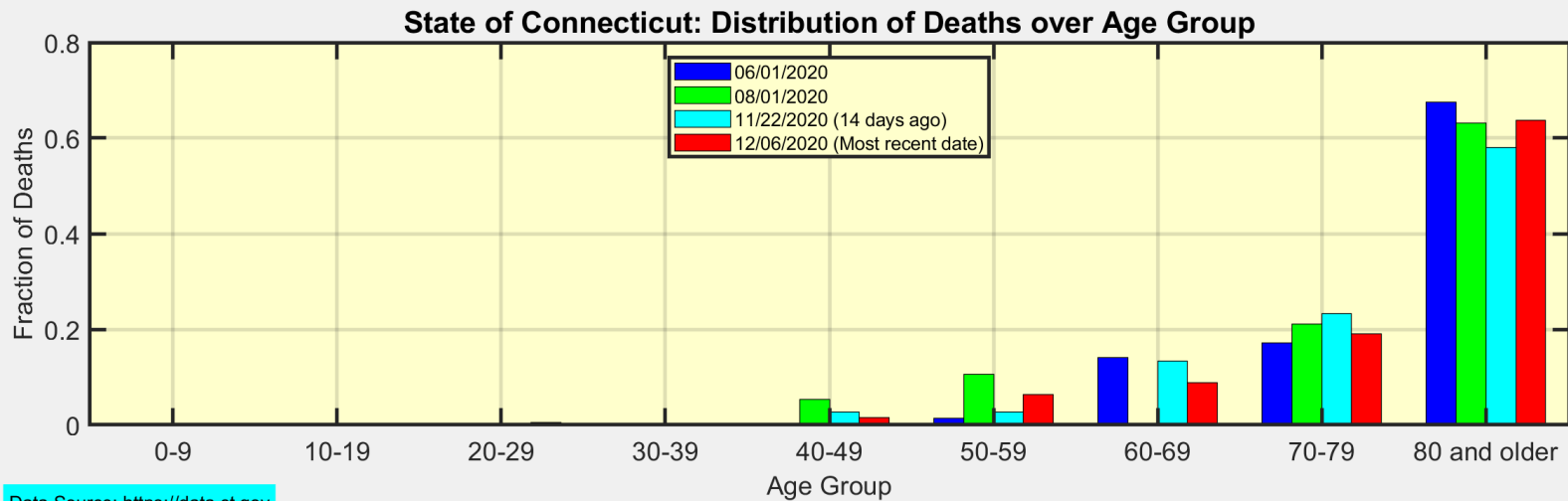
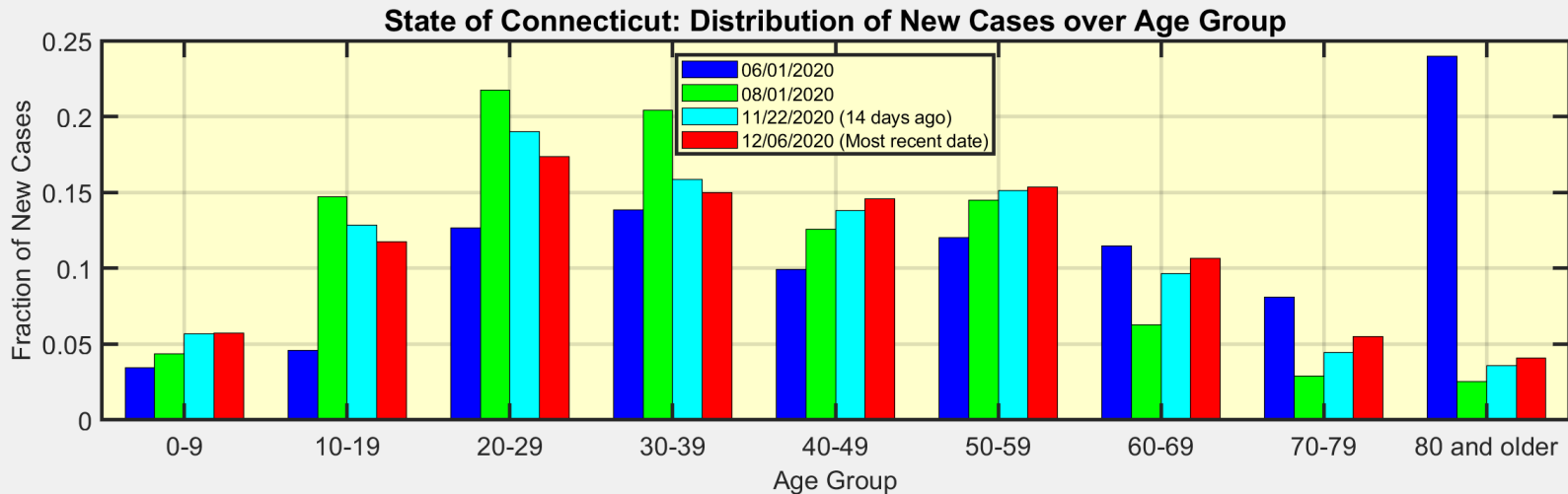
# Ridgefield continues to have one of the lower New Case Rates in Fairfield County



# This heat map shows the progression of New Case Rates for all towns in Fairfield County



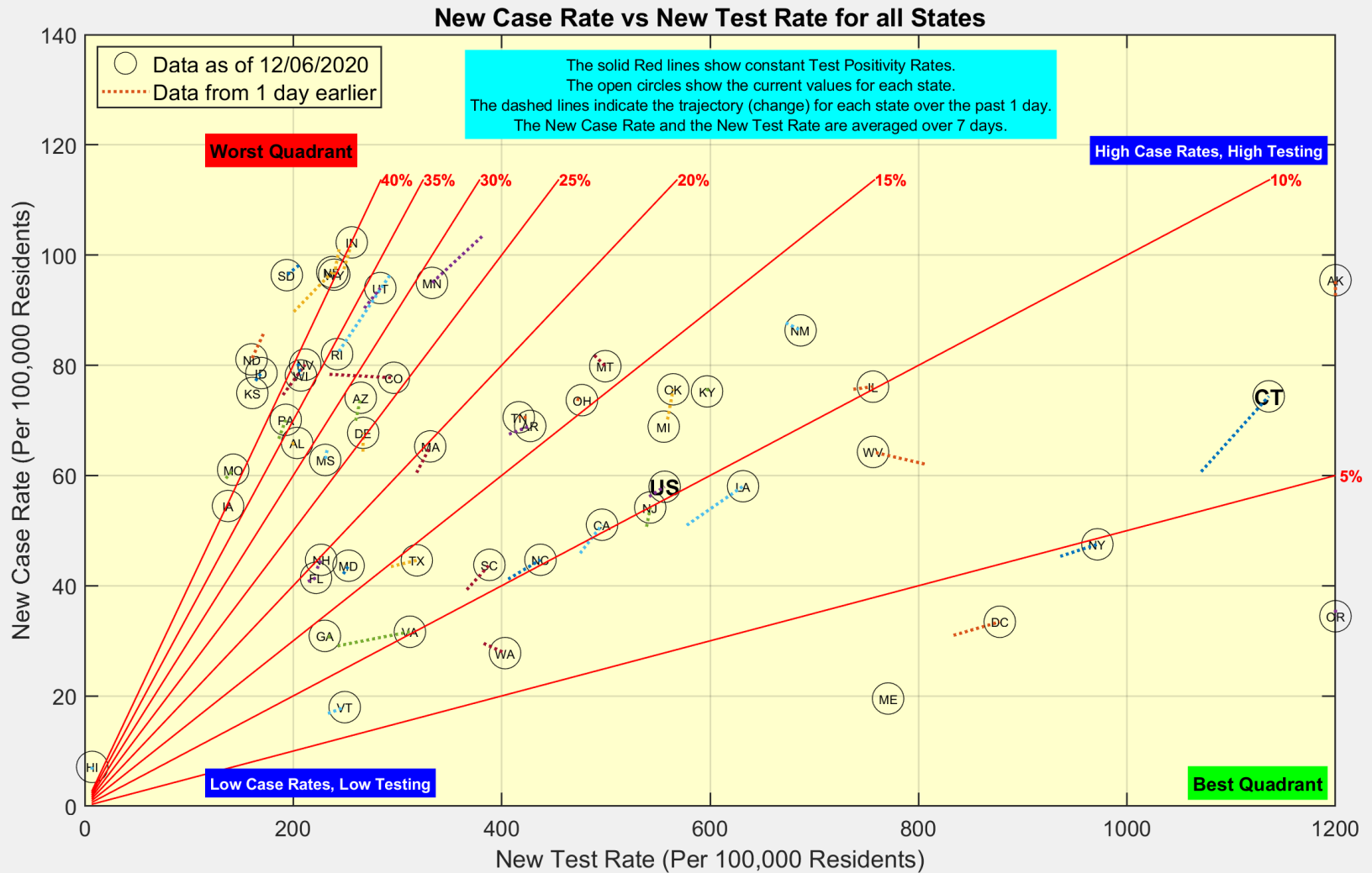
# These are the distributions of New Cases and Deaths over age group for the State of Connecticut



Data Source: <https://data.ct.gov>



# The Connecticut New Test Rate and Test Positivity are both increasing

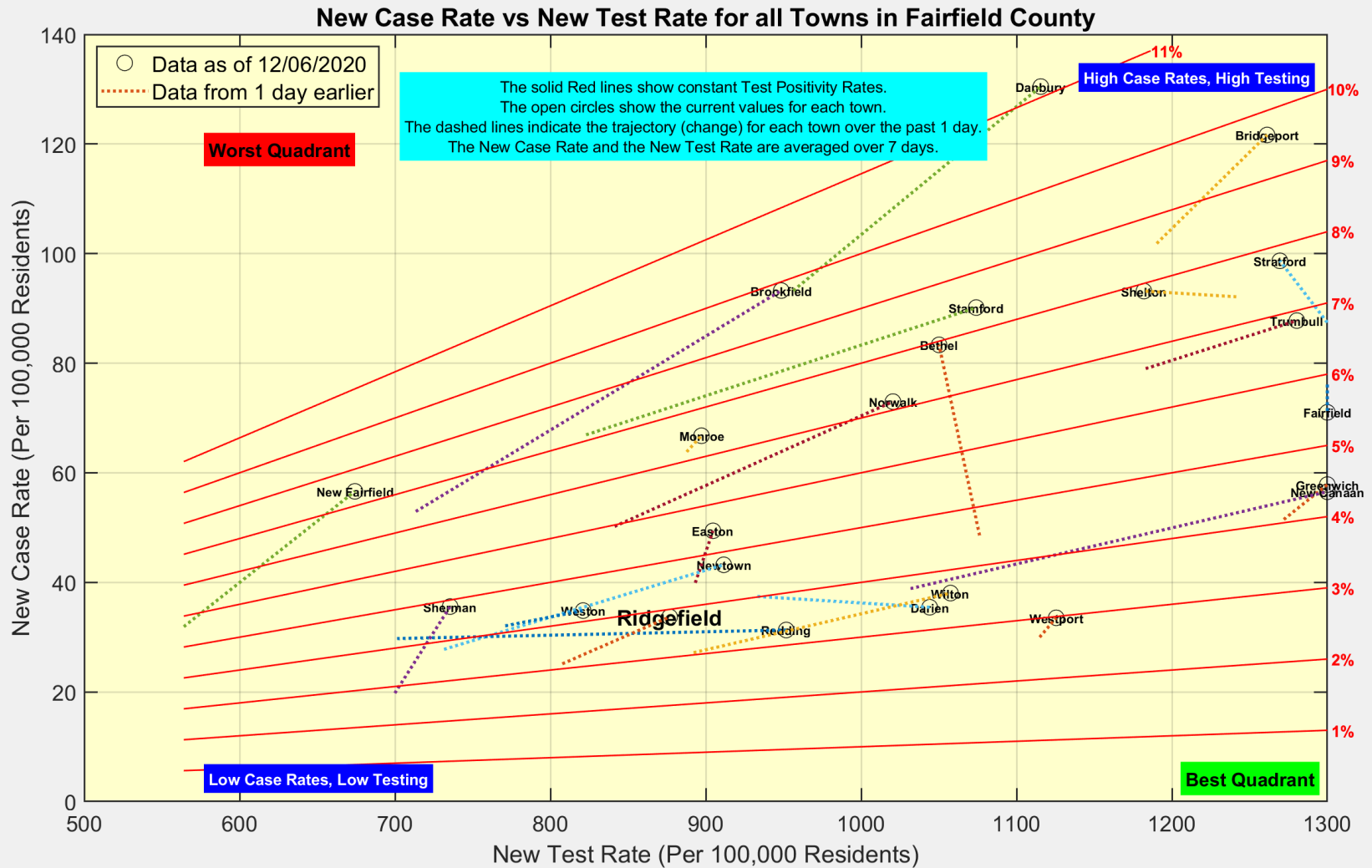


Data Source: <https://covidtracking.com/data/api>



Ridgefield COVID-19 Task Force

# Many towns are increasing testing and seeing increased Test Positivity



Data Source: <https://data.ct.gov>



Ridgefield COVID-19 Task Force