

Ridgefield COVID Report

Ridgefield COVID-19 Task Force



Data downloaded from
<https://data.ct.gov/browse?category=Health+and+Human+Services>

Data downloaded as Monday, December 21, 2020 at 4:00 PM
This reflects data through Sunday, December 20, 2020

Ridgefield Summary

Data downloaded on Monday, 12/21/2020 at 4:00 PM

Ridgefield	Sunday 12/20/2020	Thursday 12/17/2020
Number of New Cases Reported	17	4
New Case Rate (per 100,000 Residents)	27.4	23.4
New Test Rate (per 100,000 Residents)	787.7	775.7
Test Positivity	3.5%	3.0%
Fairfield County	Sunday 12/20/2020	Thursday 12/17/2020
Number of New Cases Reported	1103	578
New Case Rate (per 100,000 Residents)	51.6	60.5
New Test Rate (per 100,000 Residents)	779.1	876.2
Test Positivity	6.6%	6.9%
Currently Hospitalized	285	280

Data Source: <https://data.ct.gov>. This report reflects data reported to the State through Sunday 12/20/2020.

The New Case Rate, New Test Rate, and Test Positivity are computed using 7-day moving averages.

NOTE: The Number of New Cases Reported for Sunday is the TOTAL over the last THREE DAYS (Friday, Saturday, Sunday).

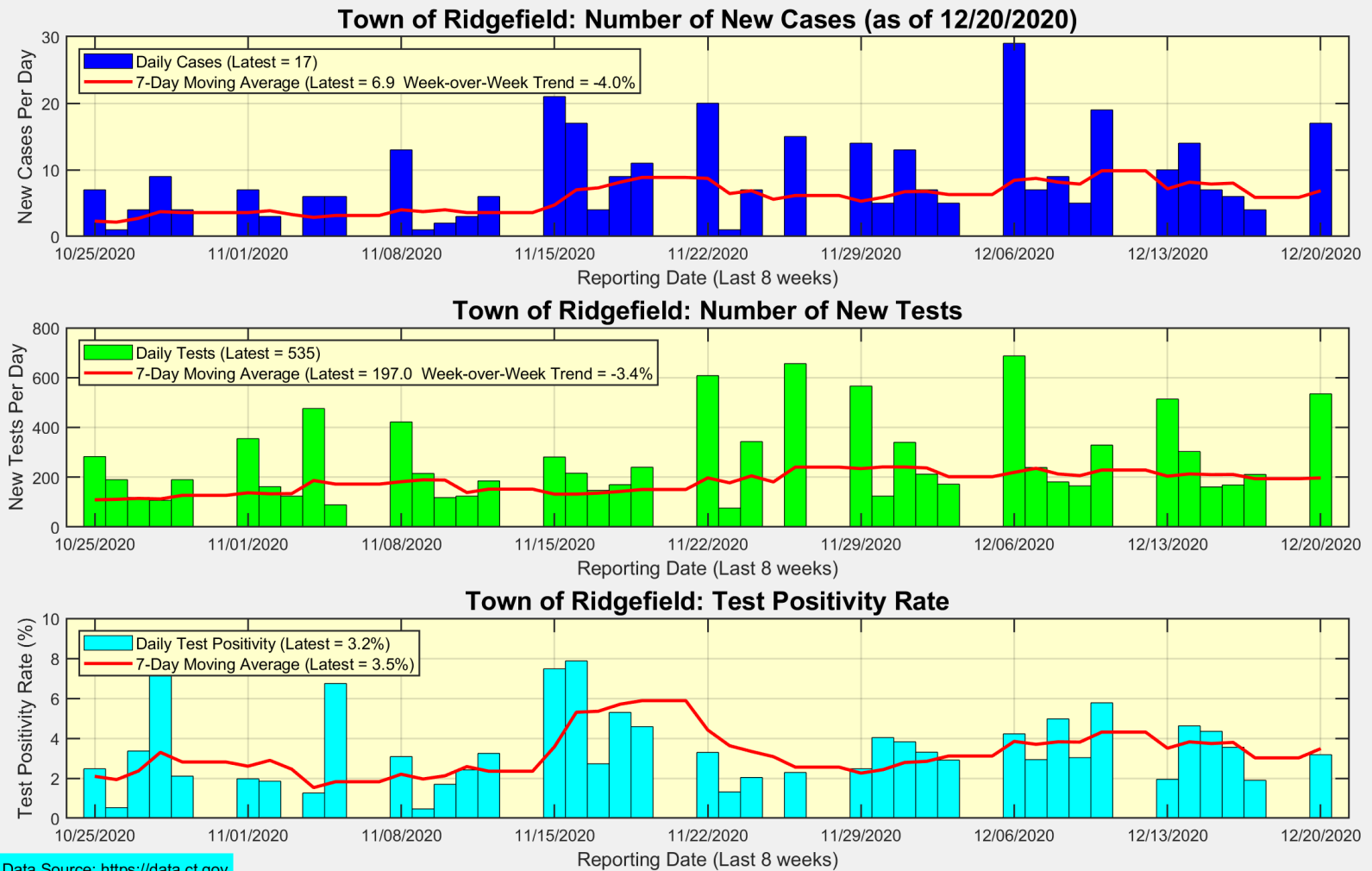
Our data science confirms CDC and other studies:

Wearing a Mask Reduces COVID Case Rates

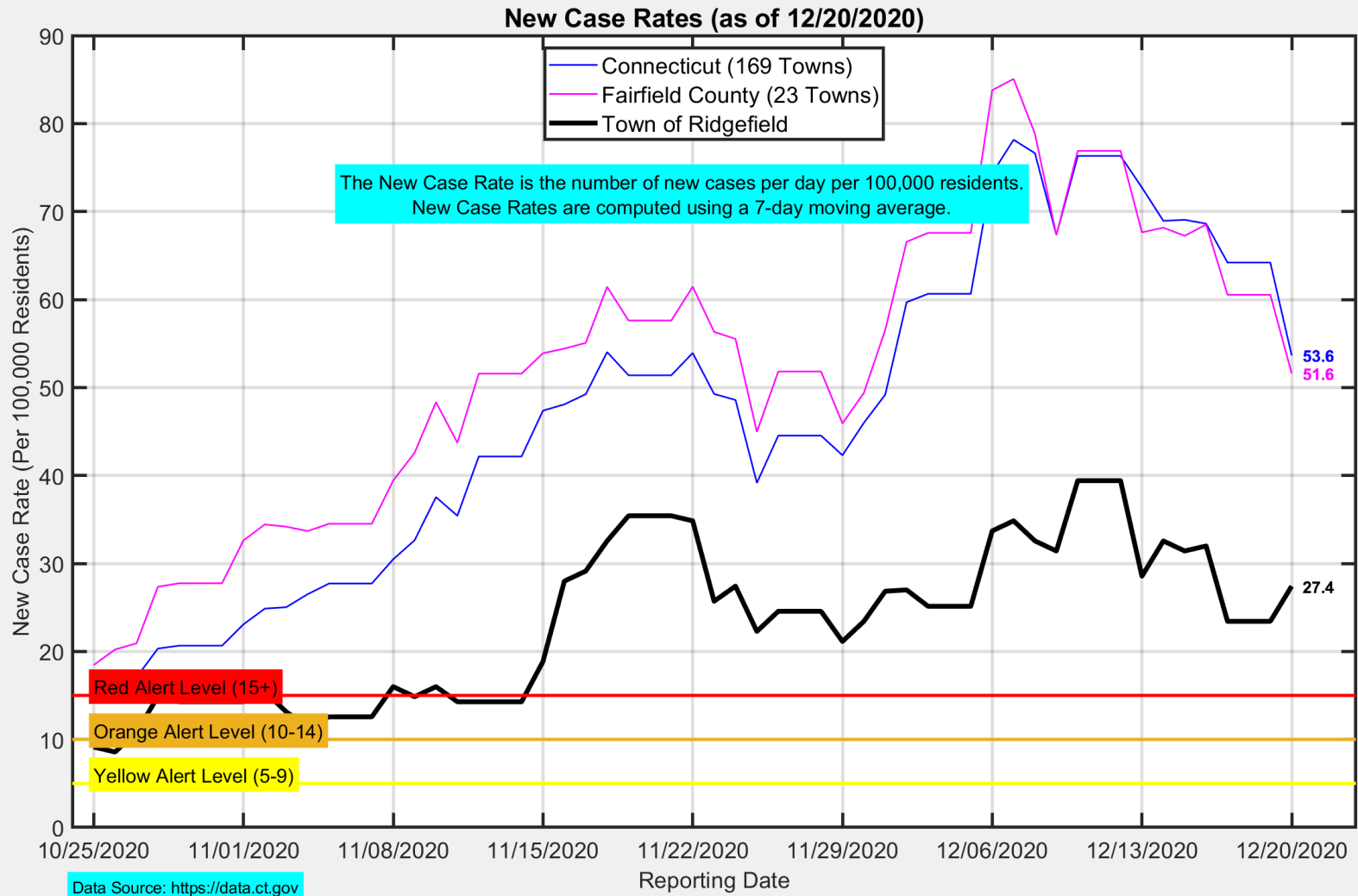


Ridgefield COVID-19 Task Force

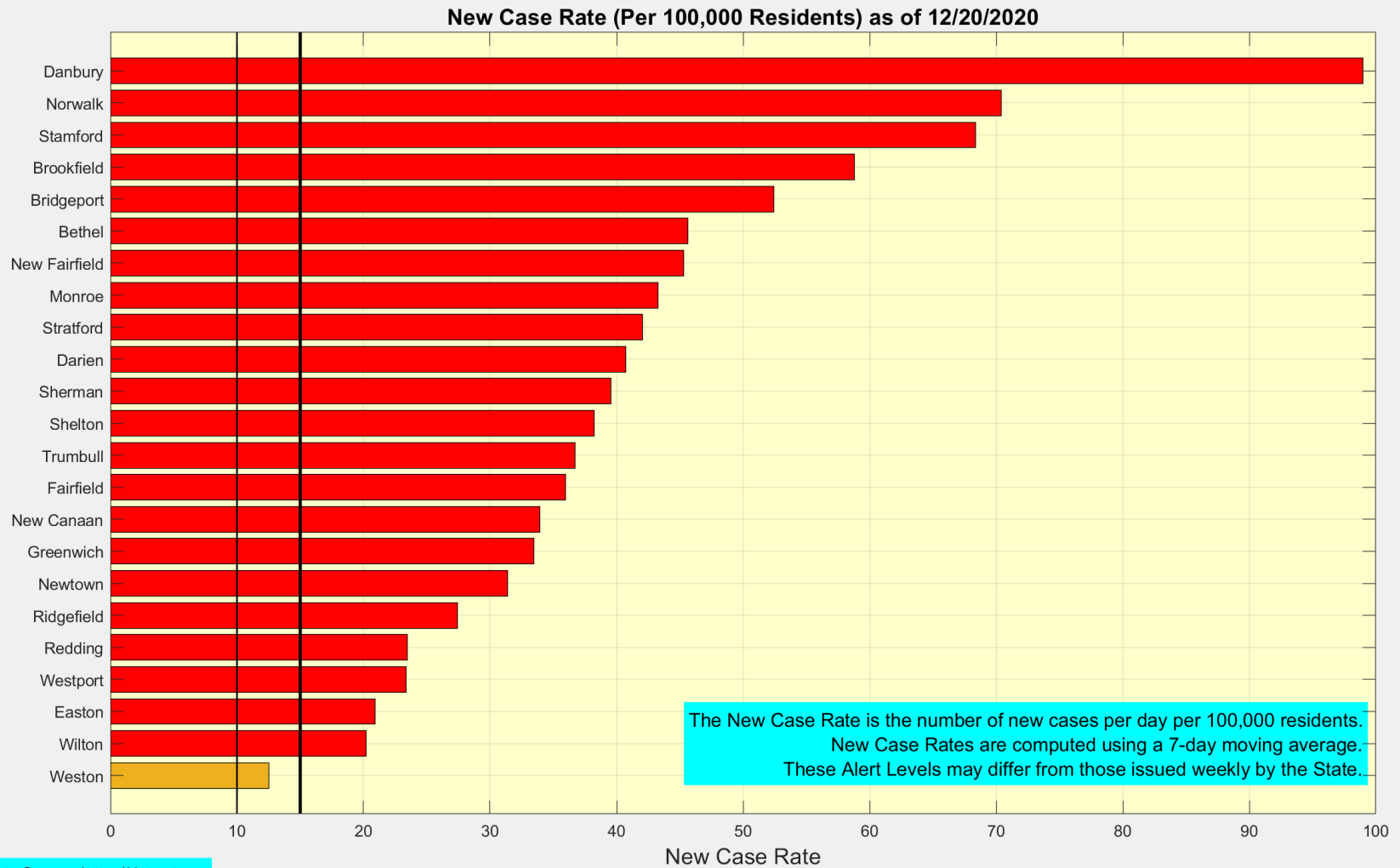
There were 17 new cases reported in Ridgefield for Friday, Saturday, and Sunday



The New Case Rate in Ridgefield increased to 27.4 while the State and County decreased



Weston remained at the Orange Level; Danbury dropped under 100 for first time in weeks

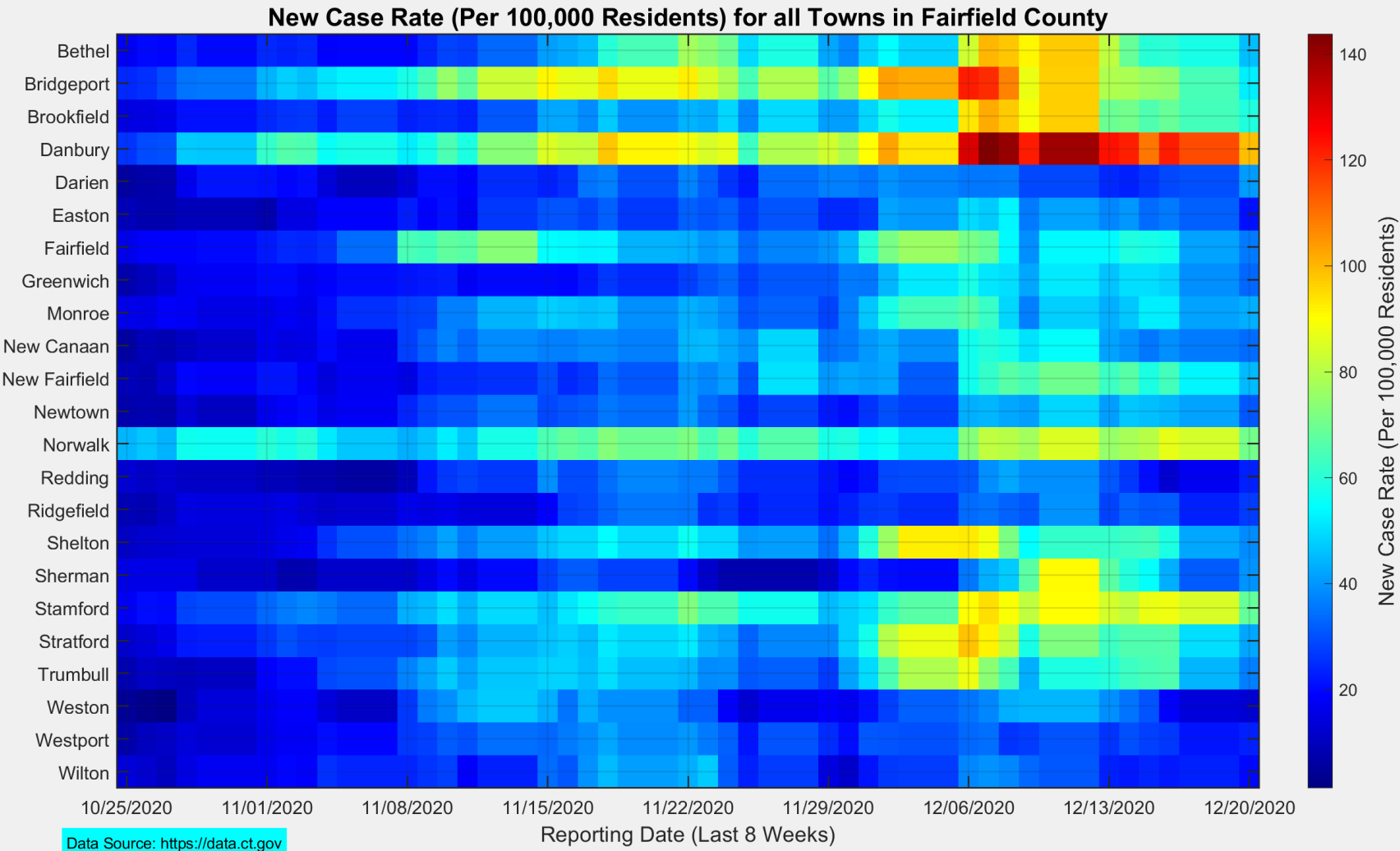


Data Source: <https://data.ct.gov>

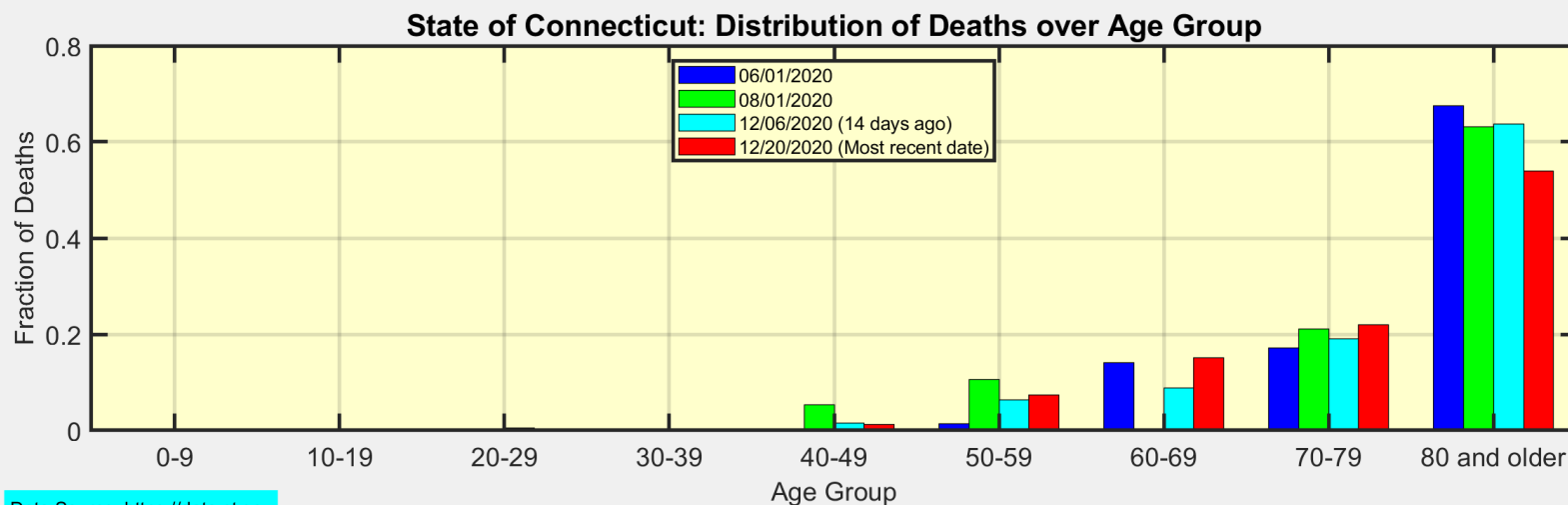
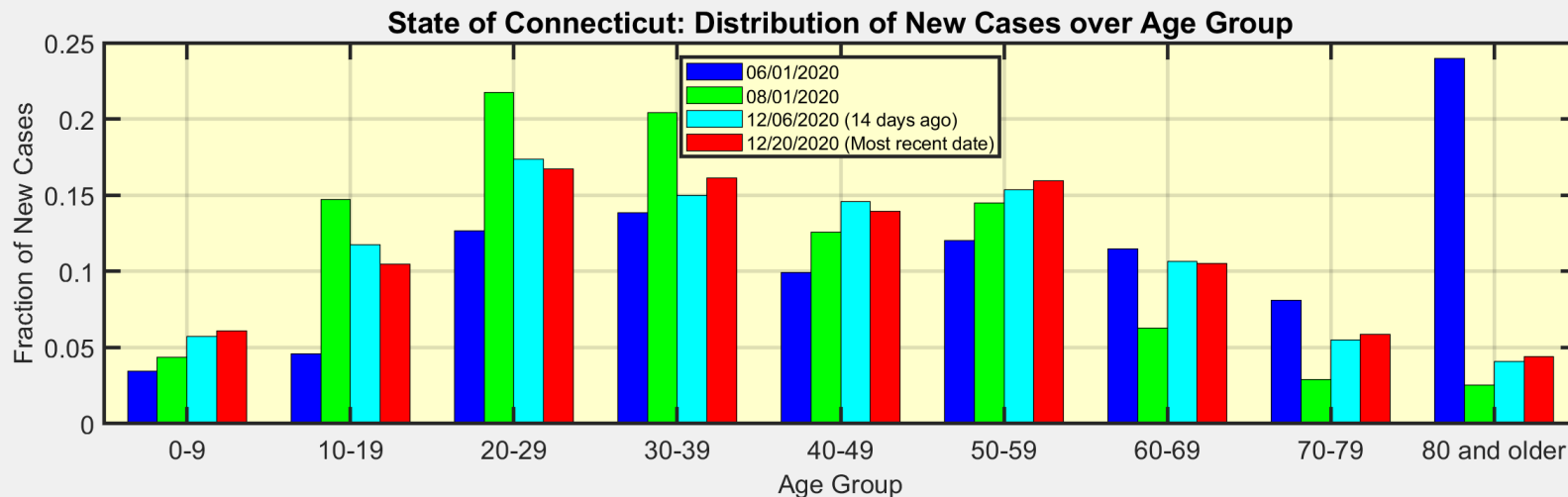


Ridgefield COVID-19 Task Force

This heat map shows the progression of New Case Rates for all towns in Fairfield County



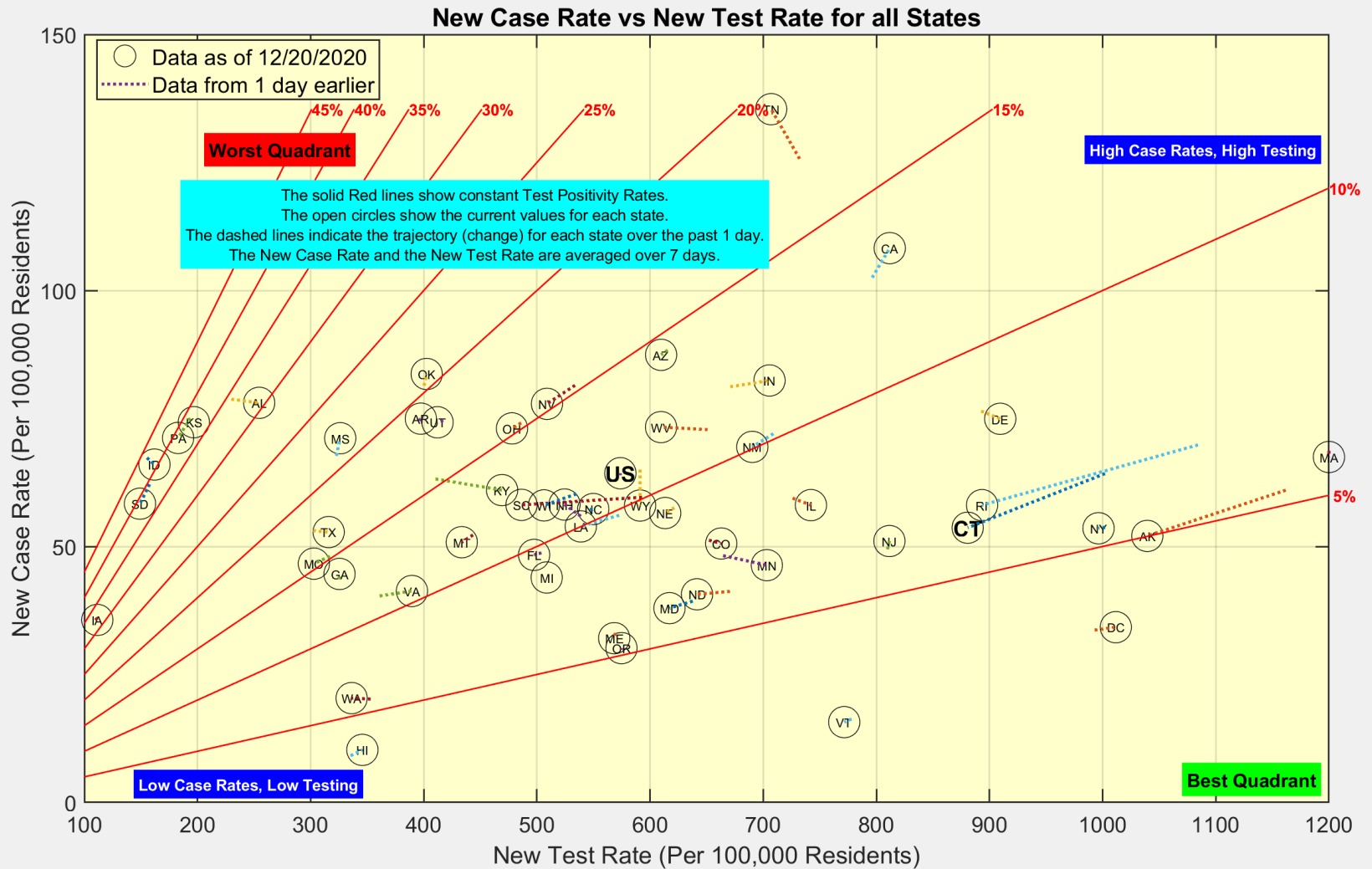
These are the distributions of New Cases and Deaths over age group for the State of Connecticut



Data Source: <https://data.ct.gov>



Here is the latest view of New Cases and New Tests for all states

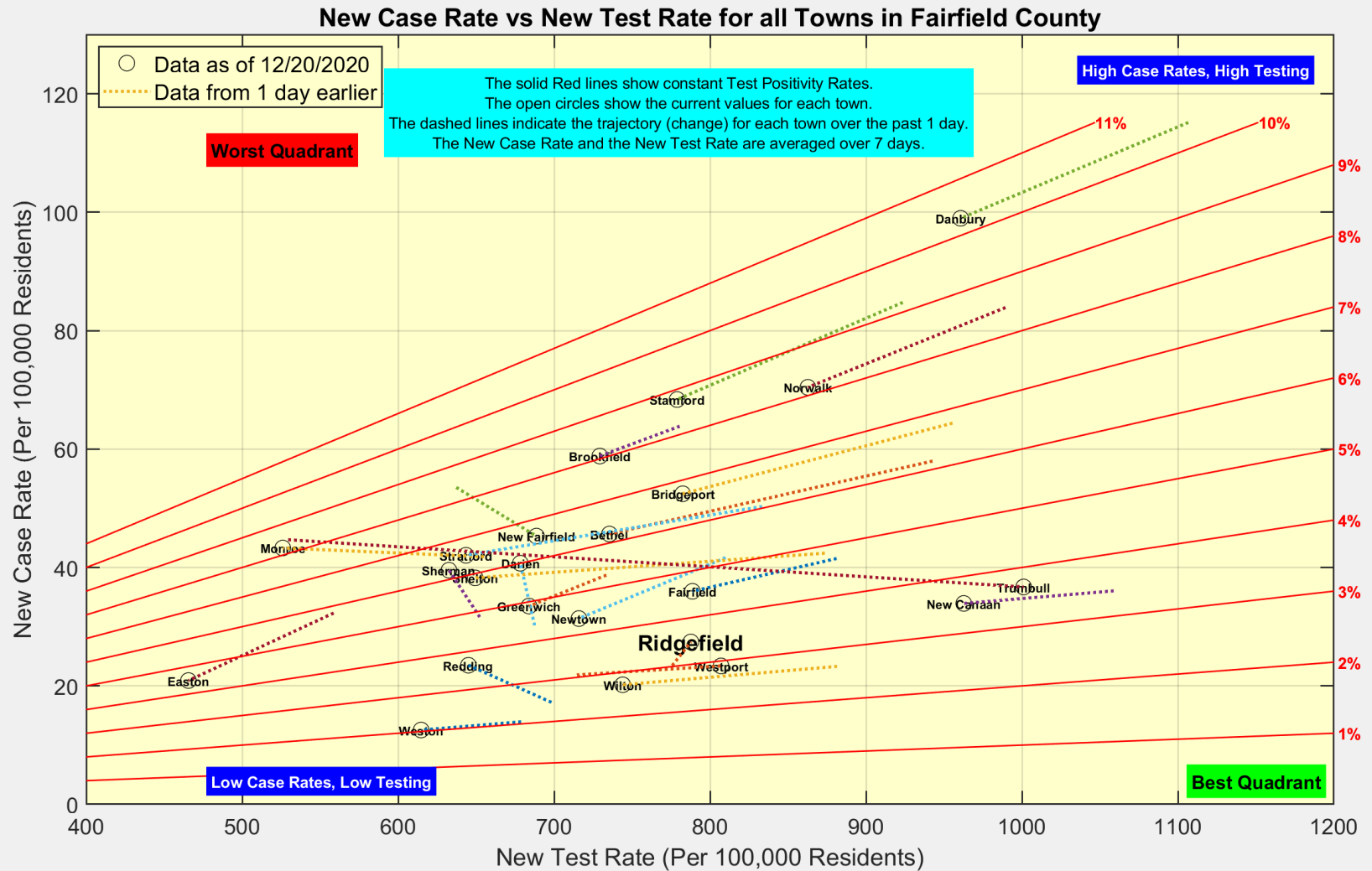


Data Source: <https://covidtracking.com/data/api>



Ridgefield COVID-19 Task Force

Testing dropped in many towns, with Test Positivity staying mostly constant



Data Source: <https://data.ct.gov>



Ridgefield COVID-19 Task Force

There has been no significant spike in the New Case Rates in Ridgefield since Thanksgiving

