

## Ridgefield COVID Report

Ridgefield COVID-19 Task Force



Data downloaded from  
<https://data.ct.gov/browse?category=Health+and+Human+Services>

Data downloaded as of Friday, December 18, 2020 at 4:00 PM  
This reflects data through Thursday, December 17, 2020

## Ridgefield Summary

Data downloaded on Friday, 12/18/2020 at 4:00 PM

Ridgefield	Thursday 12/17/2020	Wednesday 12/16/2020
Number of New Cases Reported	4	6
New Case Rate (per 100,000 Residents)	23.4	32.0
New Test Rate (per 100,000 Residents)	775.7	843.1
Test Positivity	3.0%	3.8%
Fairfield County	Thursday 12/17/2020	Wednesday 12/16/2020
Number of New Cases Reported	578	614
New Case Rate (per 100,000 Residents)	60.5	68.5
New Test Rate (per 100,000 Residents)	876.1	971.5
Test Positivity	6.9%	7.1%
Currently Hospitalized	280	296

**Data Source:** <https://data.ct.gov>. This report reflects data reported to the State through Thursday 12/17/2020. The New Case Rate, New Test Rate, and Test Positivity are computed using 7-day moving averages.

Our data science confirms CDC and other studies:

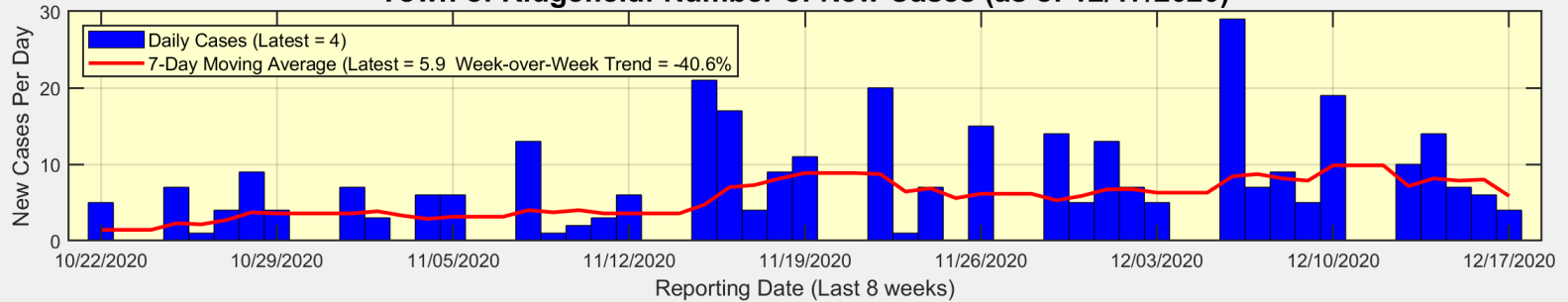
***Wearing a Mask Reduces COVID Case Rates***



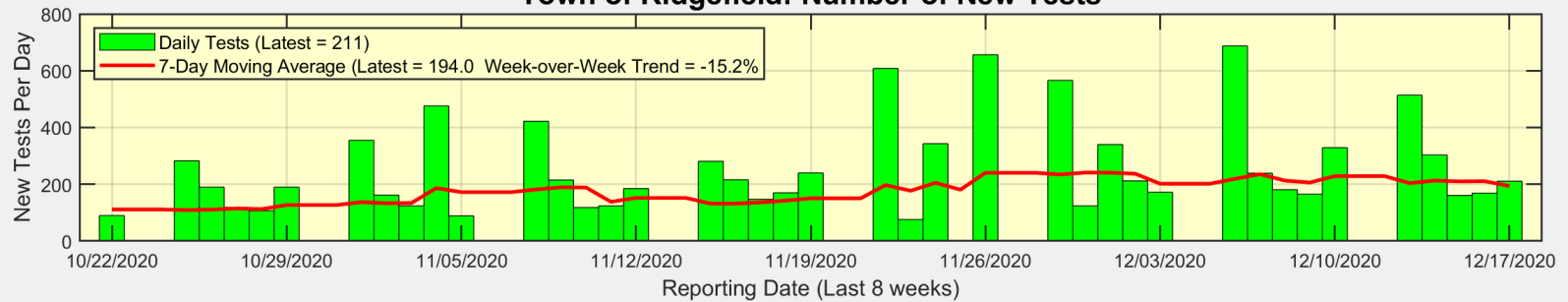
Ridgefield COVID-19 Task Force

# There were 4 new cases reported in Ridgefield on Thursday

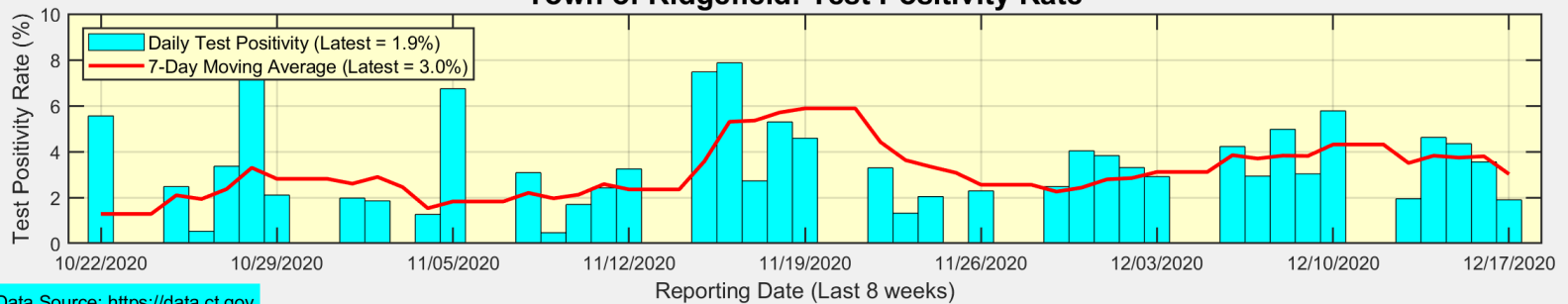
**Town of Ridgefield: Number of New Cases (as of 12/17/2020)**



**Town of Ridgefield: Number of New Tests**



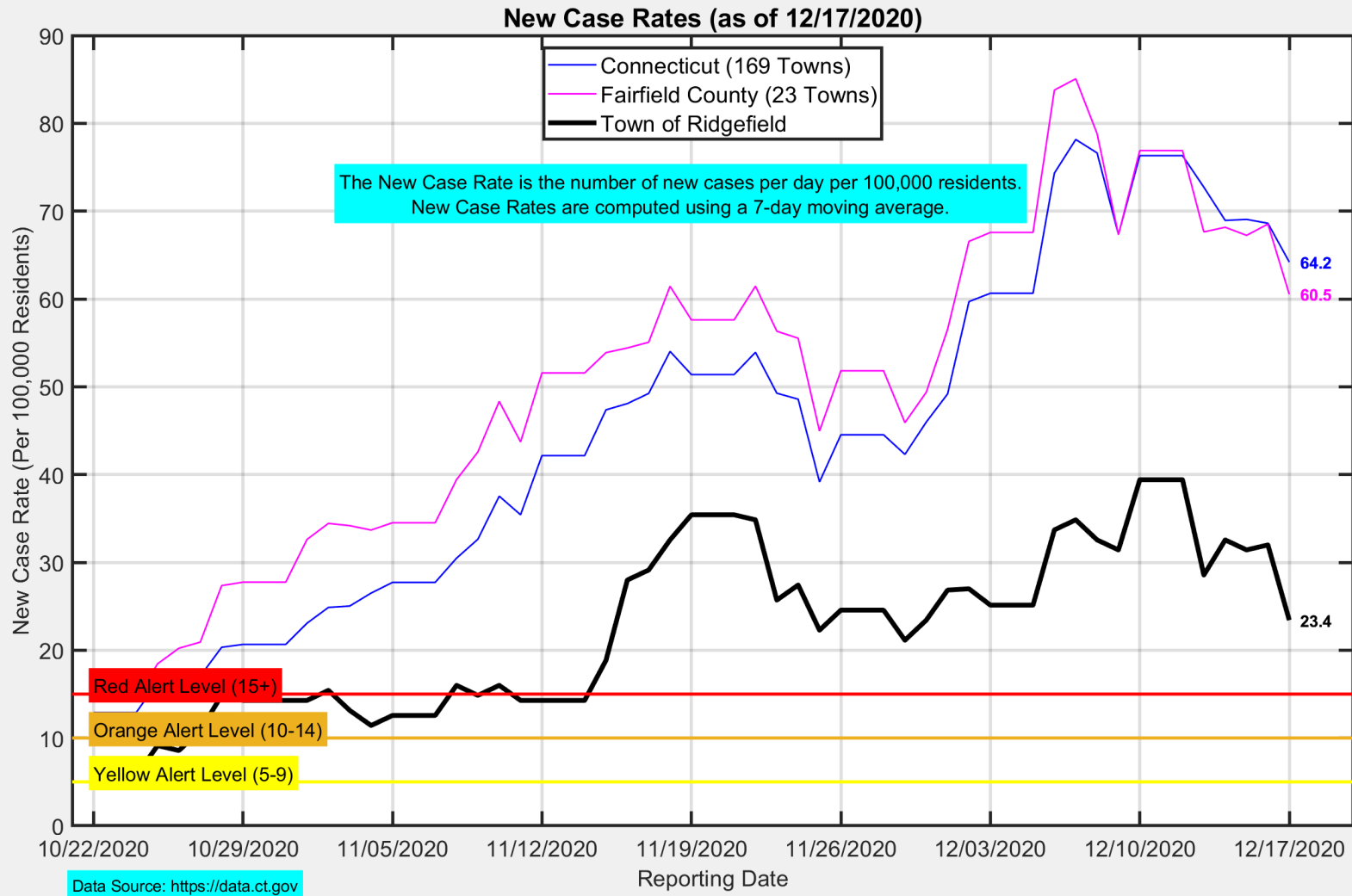
**Town of Ridgefield: Test Positivity Rate**



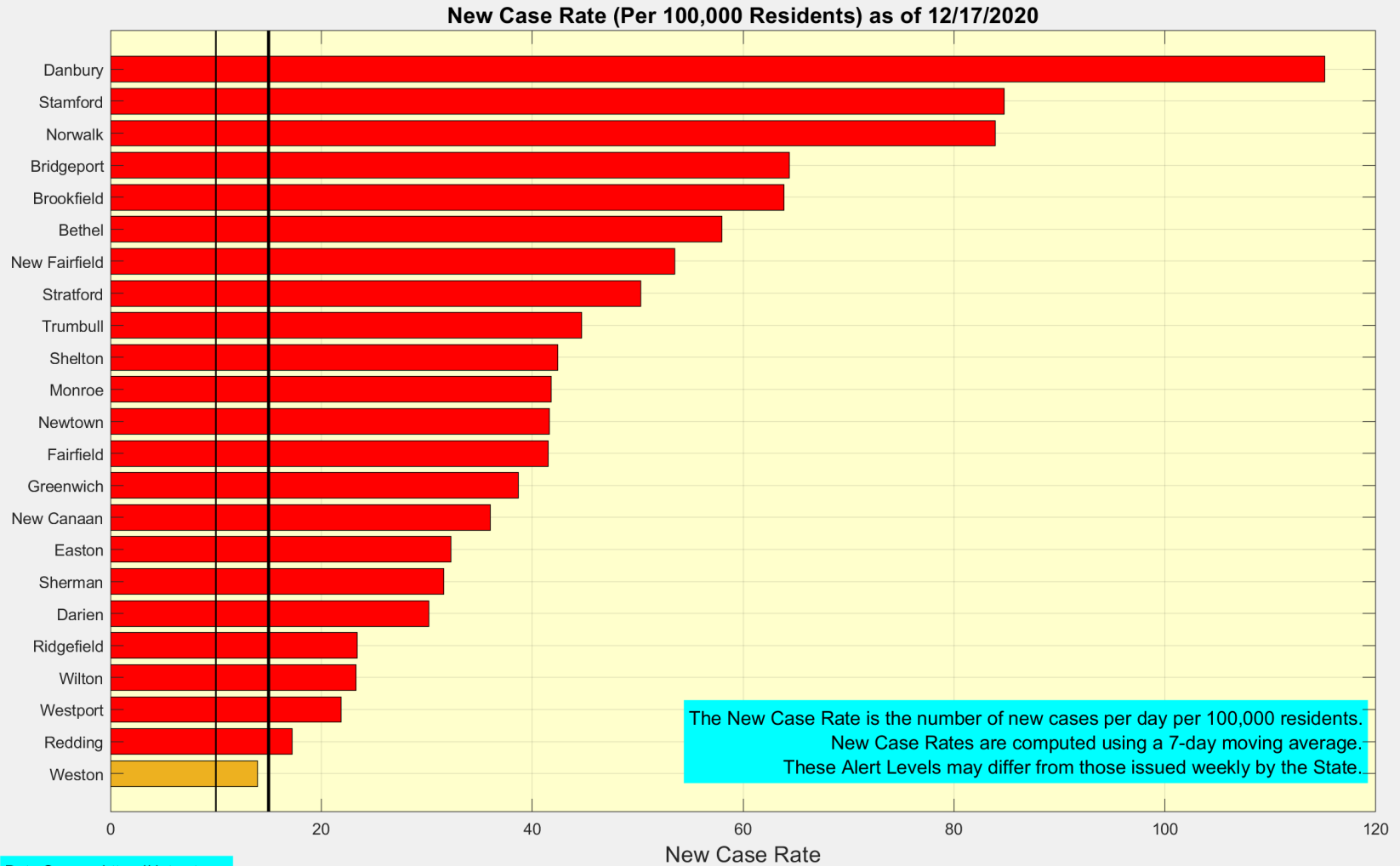
Data Source: <https://data.ct.gov>



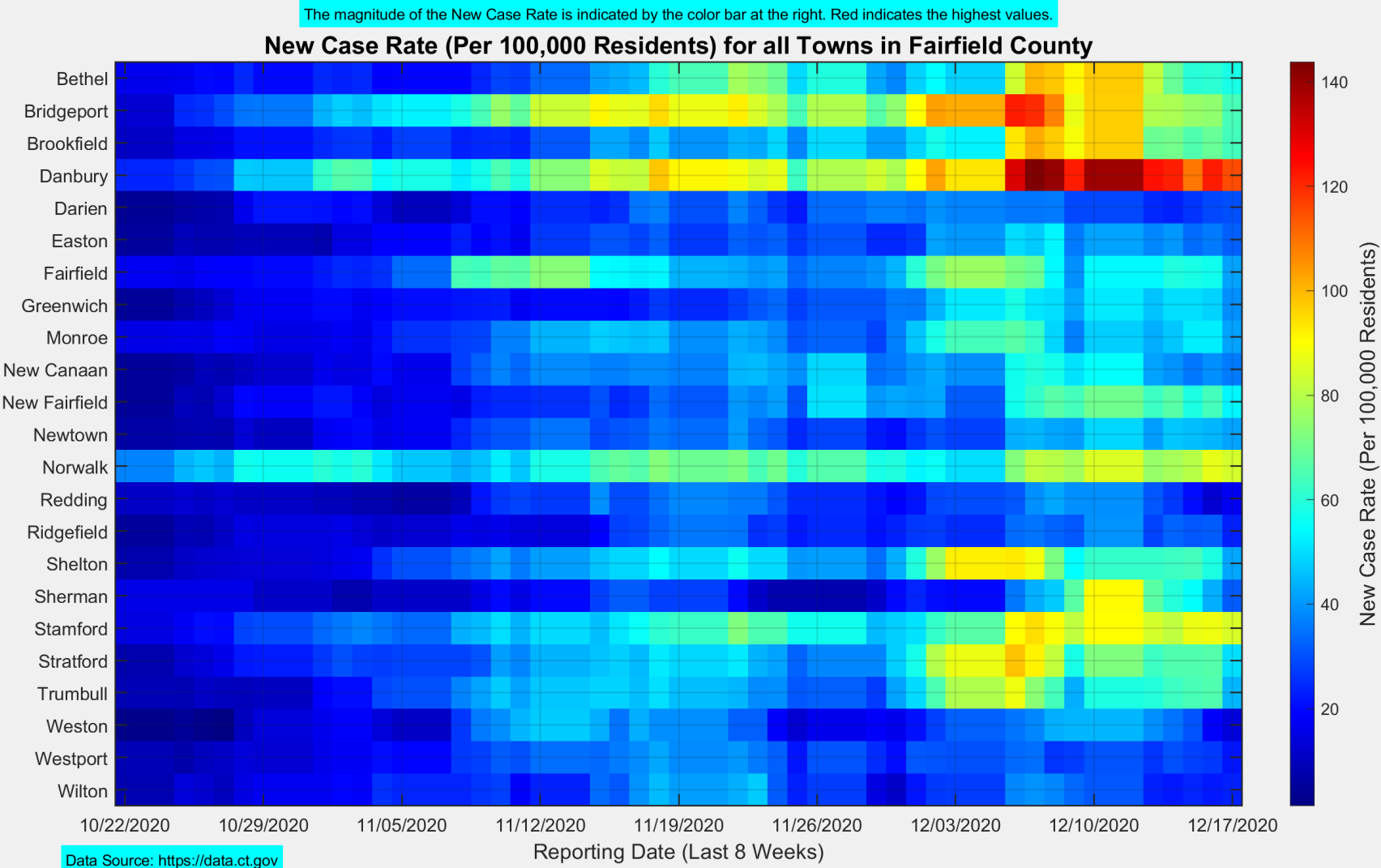
## The New Case Rate in Ridgefield decreased to 23.4



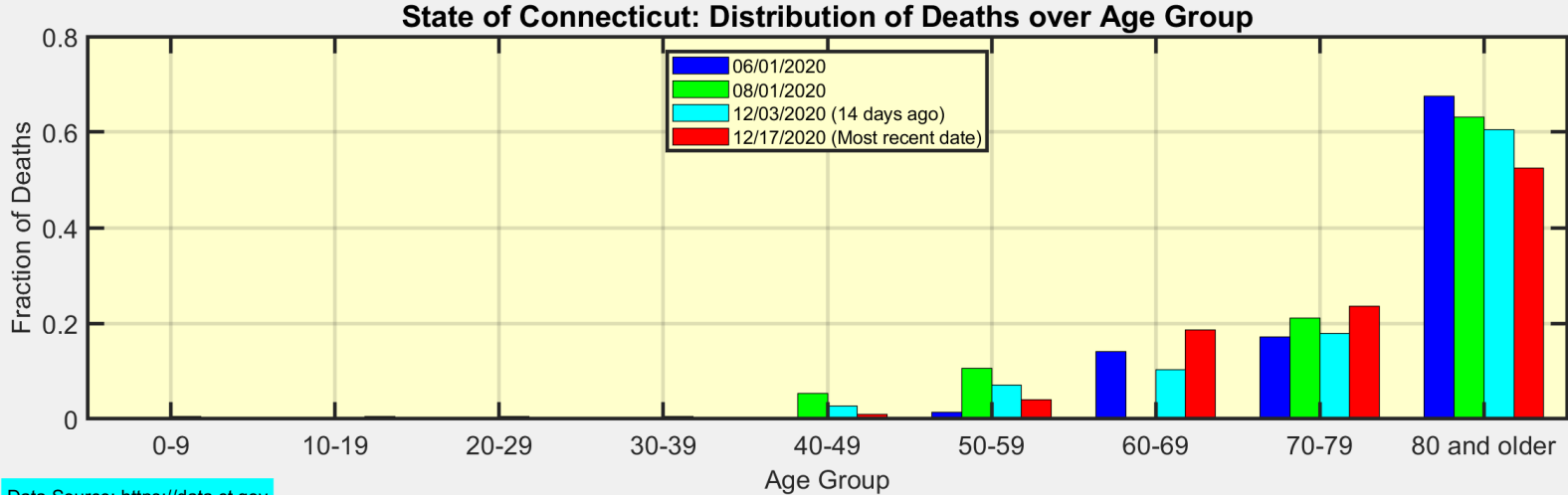
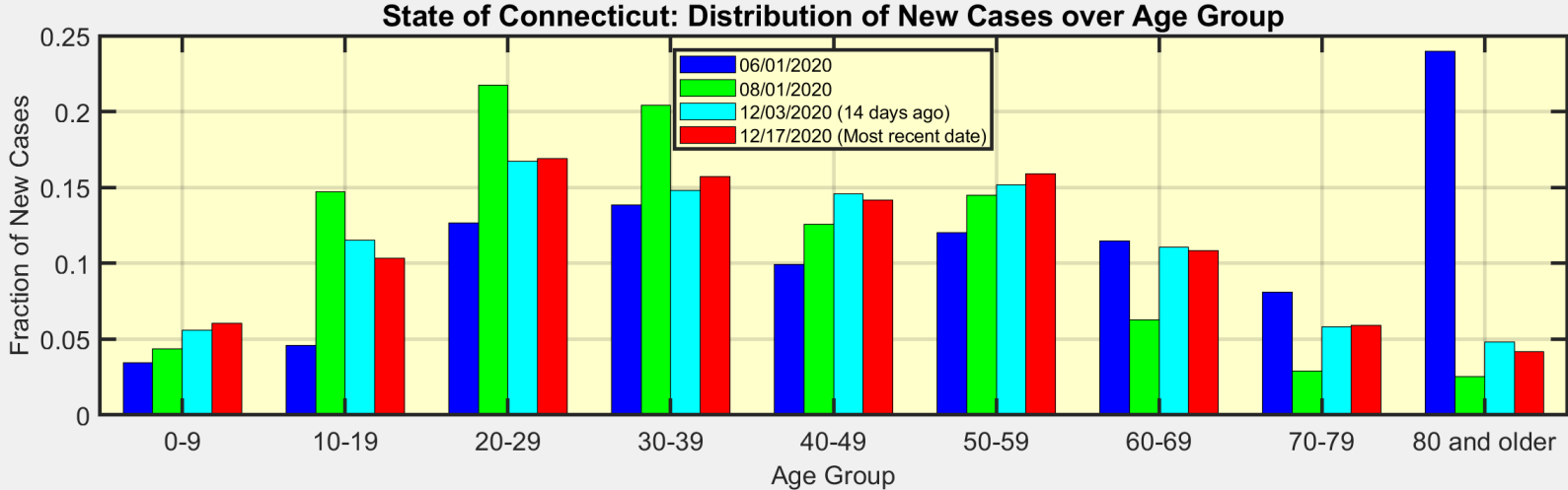
# Weston dropped back to Orange Level ... Redding was Orange yesterday



# This heat map shows the progression of New Case Rates for all towns in Fairfield County



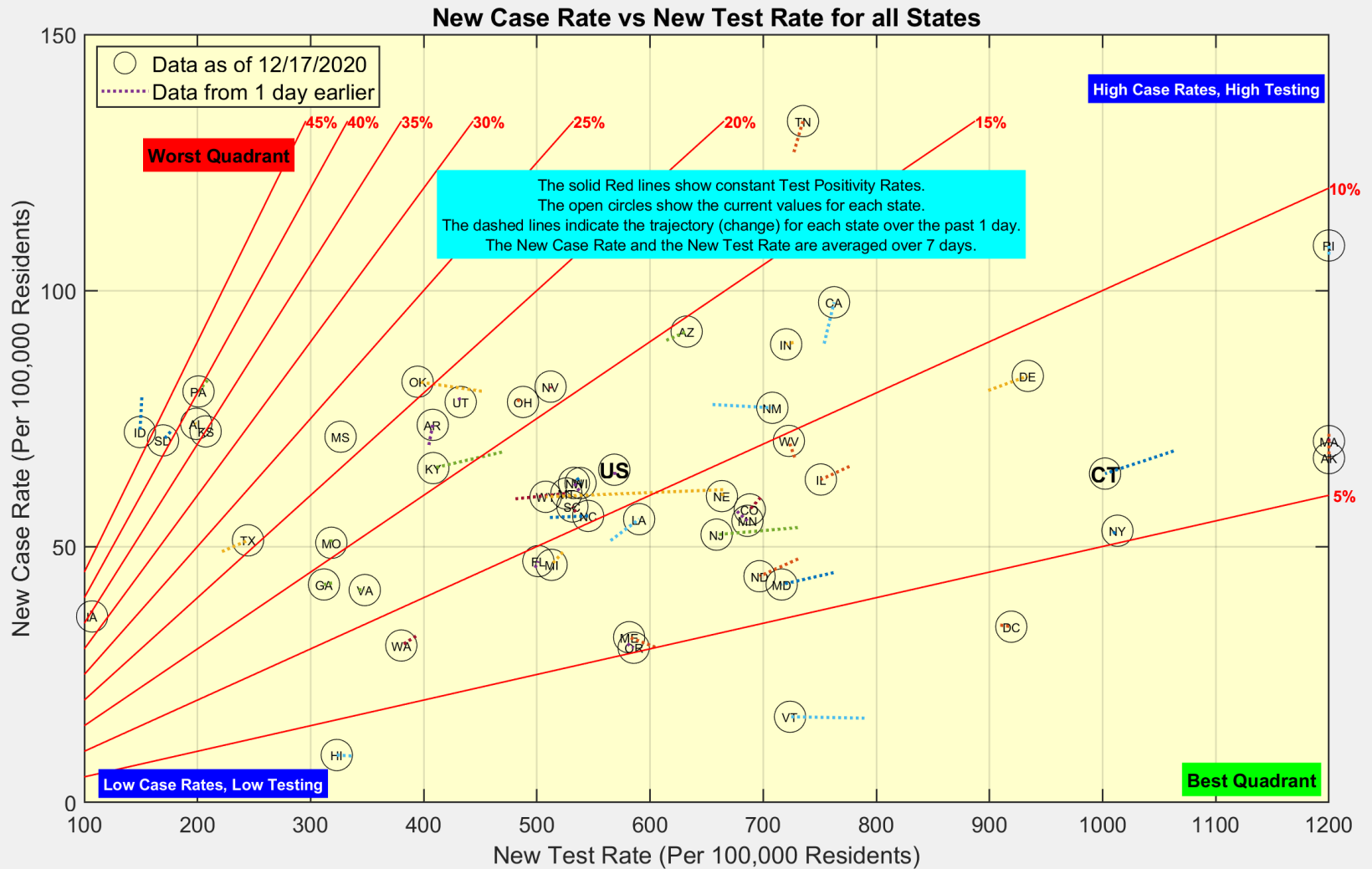
# These are the distributions of New Cases and Deaths over age group for the State of Connecticut



Data Source: <https://data.ct.gov>



# Here is the latest view of New Cases and New Tests for all states



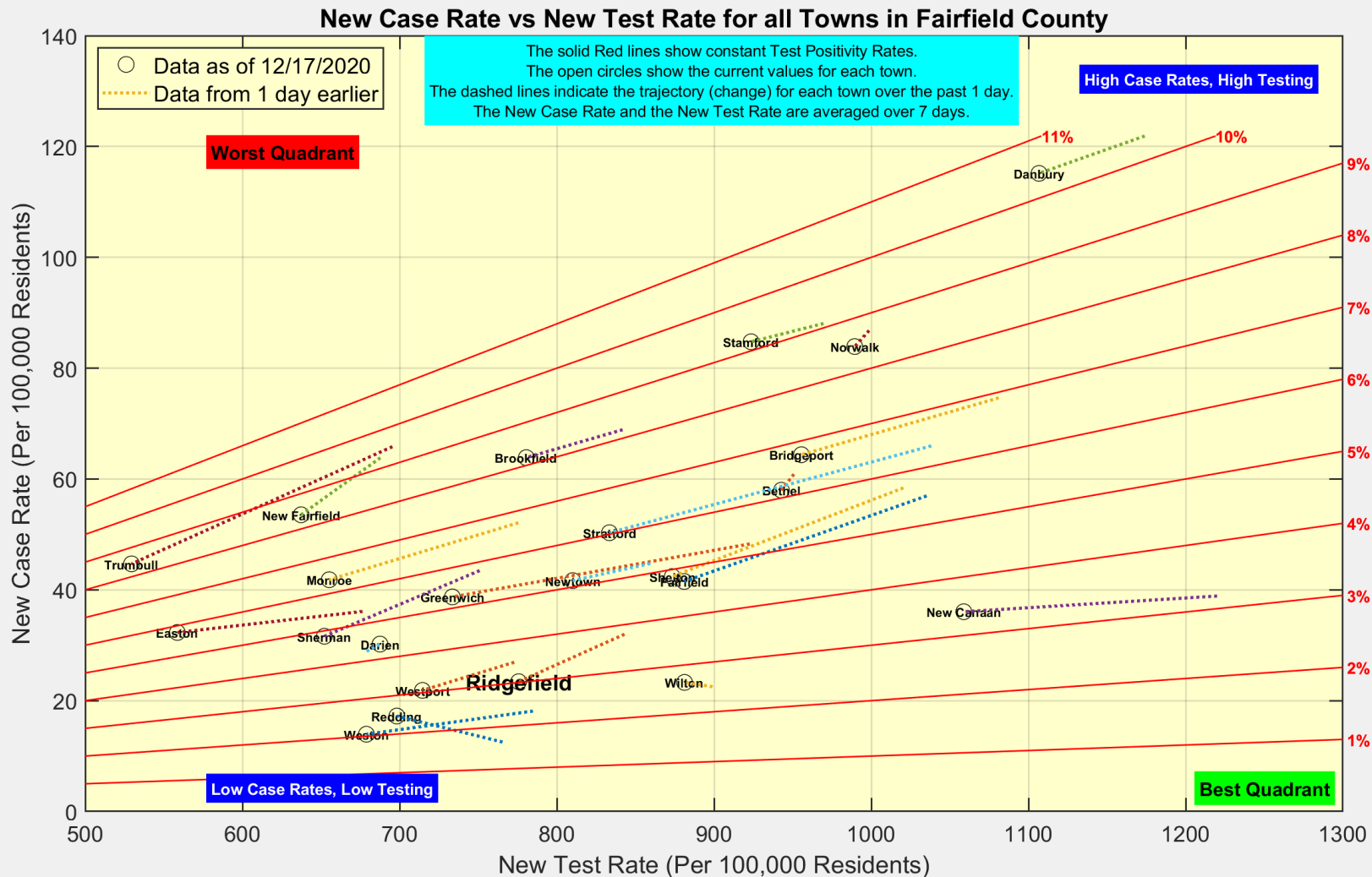
Data Source: <https://covidtracking.com/data/api>



Ridgefield COVID-19 Task Force



# Many Towns, including Ridgefield, saw a decrease in New Case Rates



Data Source: <https://data.ct.gov>



Ridgefield COVID-19 Task Force

# There has been no significant spike in the New Case Rates in Ridgefield since Thanksgiving

