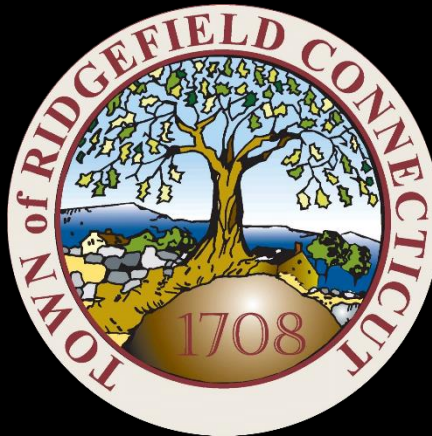


Ridgefield COVID Report

Ridgefield COVID-19 Task Force



Data downloaded from
<https://data.ct.gov/browse?category=Health+and+Human+Services>
(as of Monday November 30, 2020 at 4PM)

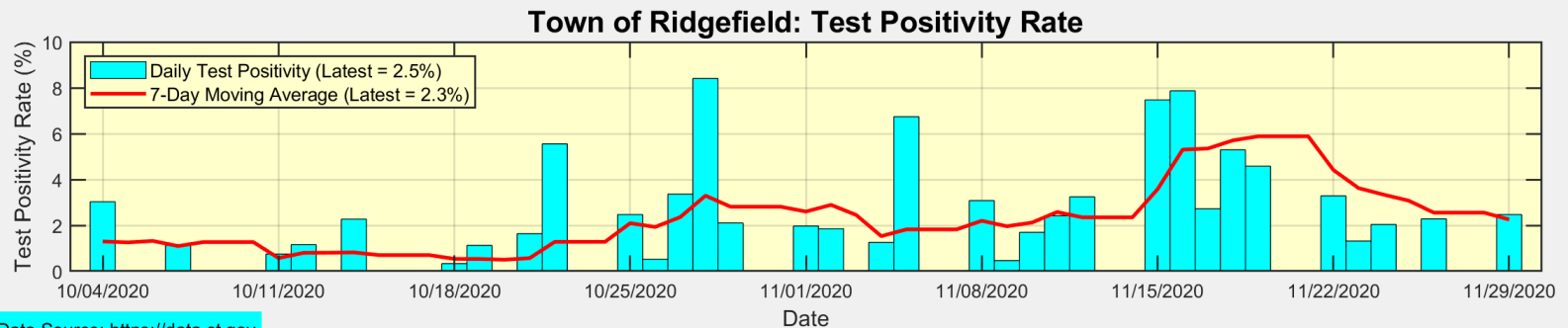
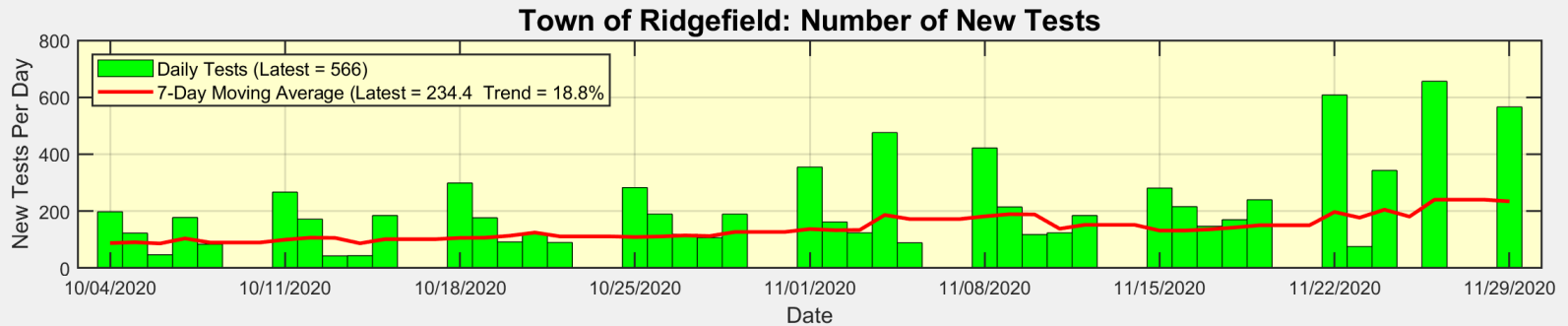
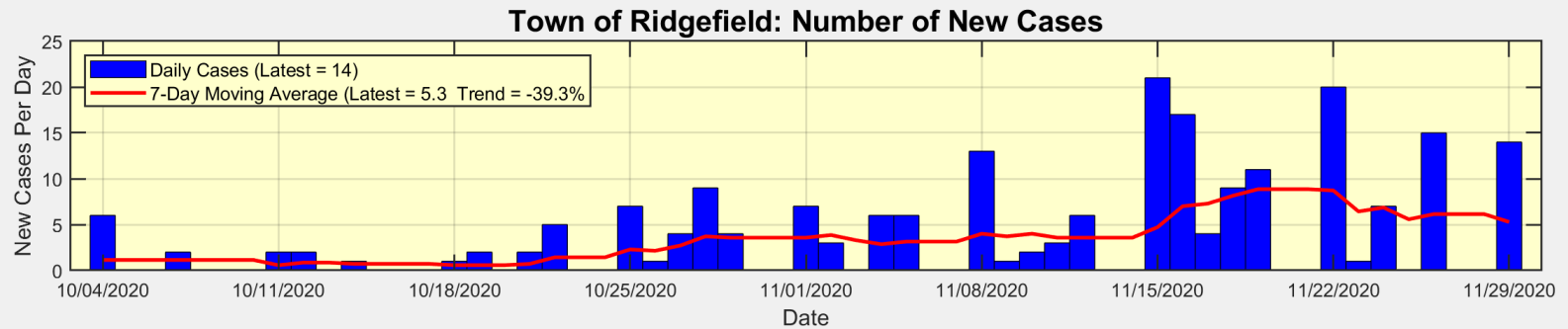
Summary

- There were 14 new cases in Ridgefield over the past three days
 - There was no report from the state on Saturday or Sunday
- This translates to a slightly decreased New Case Rate of 21.1 new cases per 100,000 residents
 - This number has been relatively stable over the past 6 days
- The Test Positivity rate (averaged over the past 7 days) has decreased to 2.3%
 - This is one of the lowest rates among towns in Fairfield County
- Ridgefield has increased testing over the past 7 days, with reduced New Cases & Test Positivity
 - This is a generally favorable trend
- We all understand that the coming weeks will present significant new challenges
 - We must all commit to continue the mitigation efforts that have made a measurable impact so far.

|



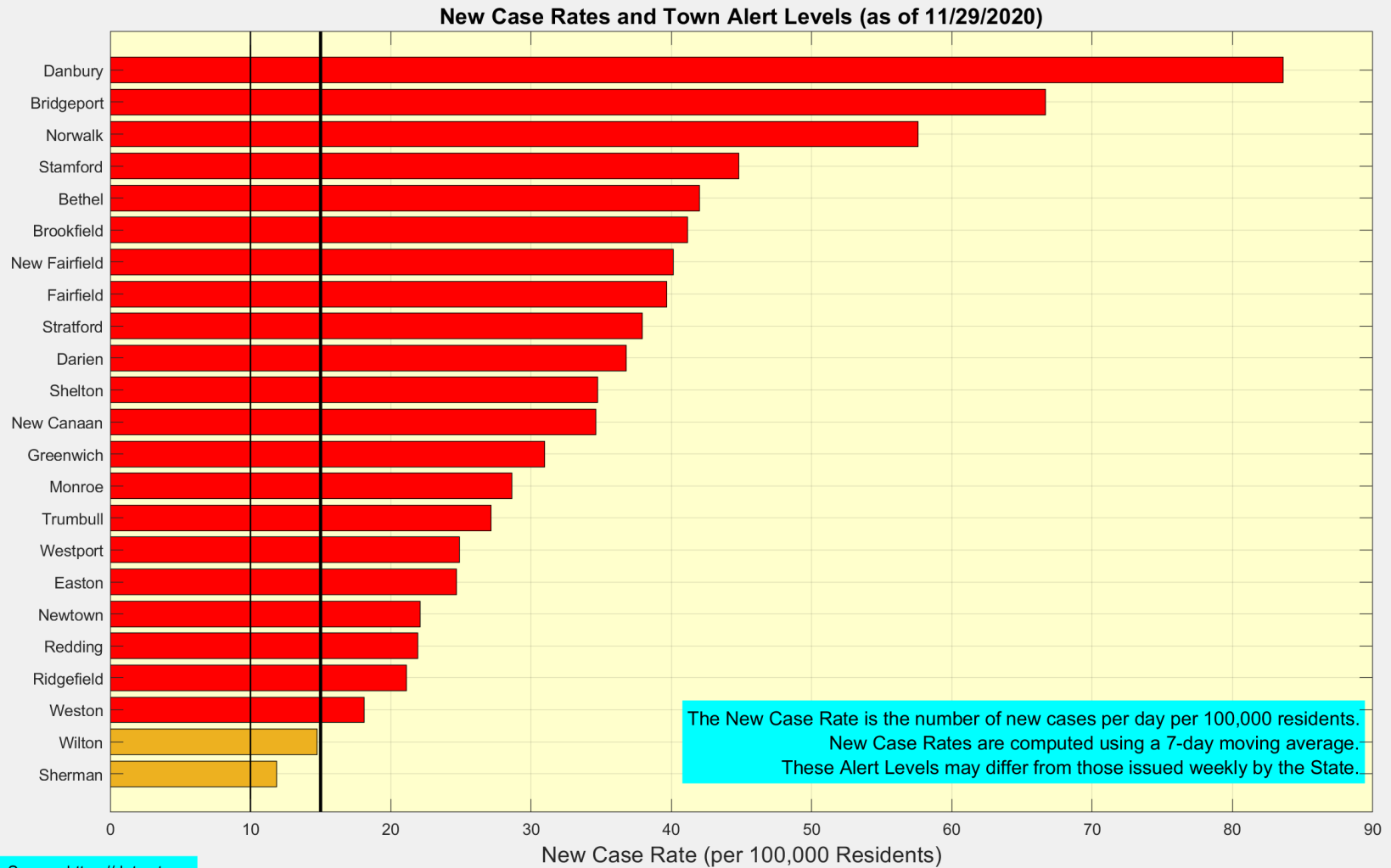
There were 14 new cases reported in Ridgefield over the past 3 days (no reports on Weekend)



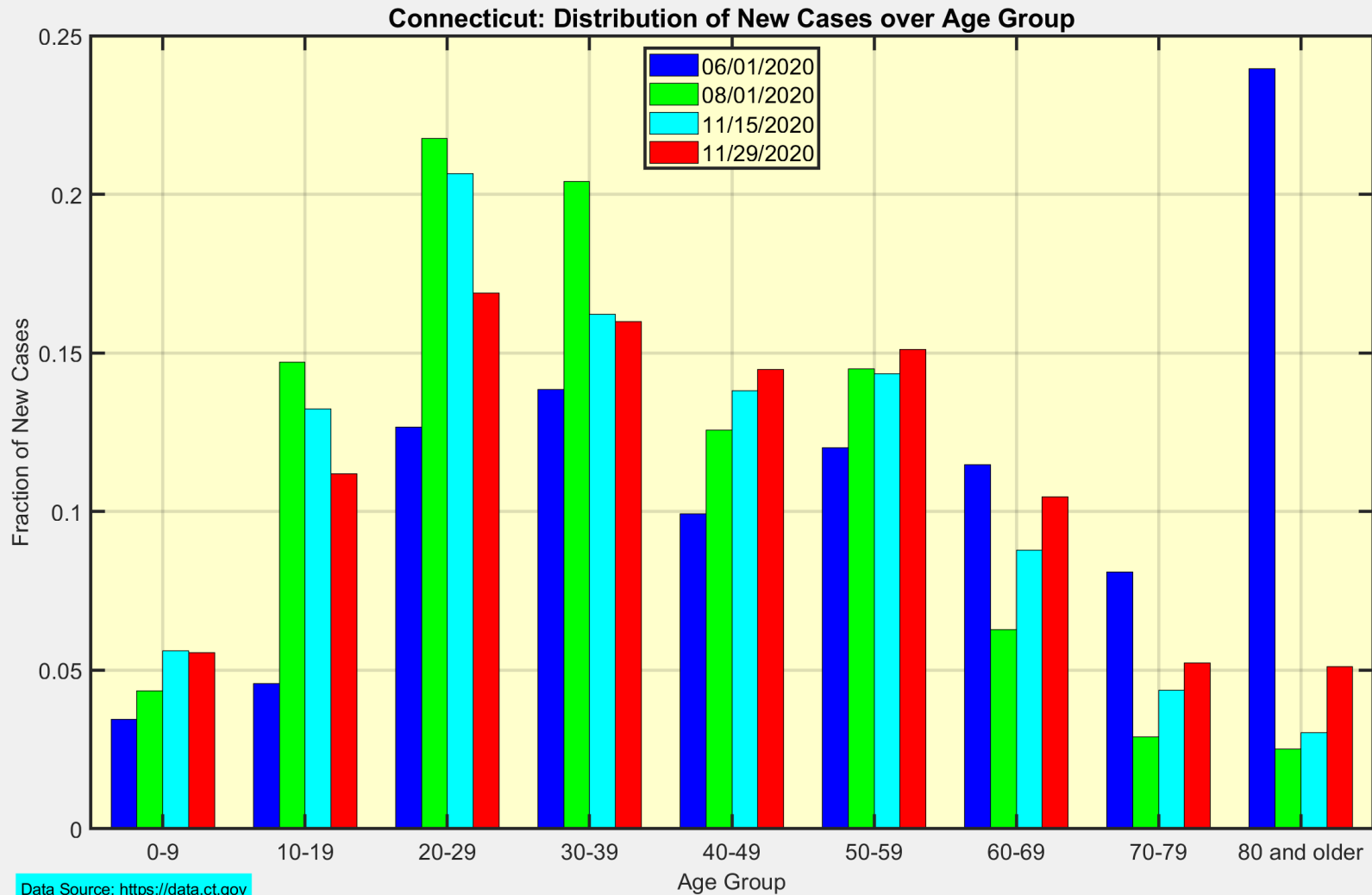
Data Source: <https://data.ct.gov>



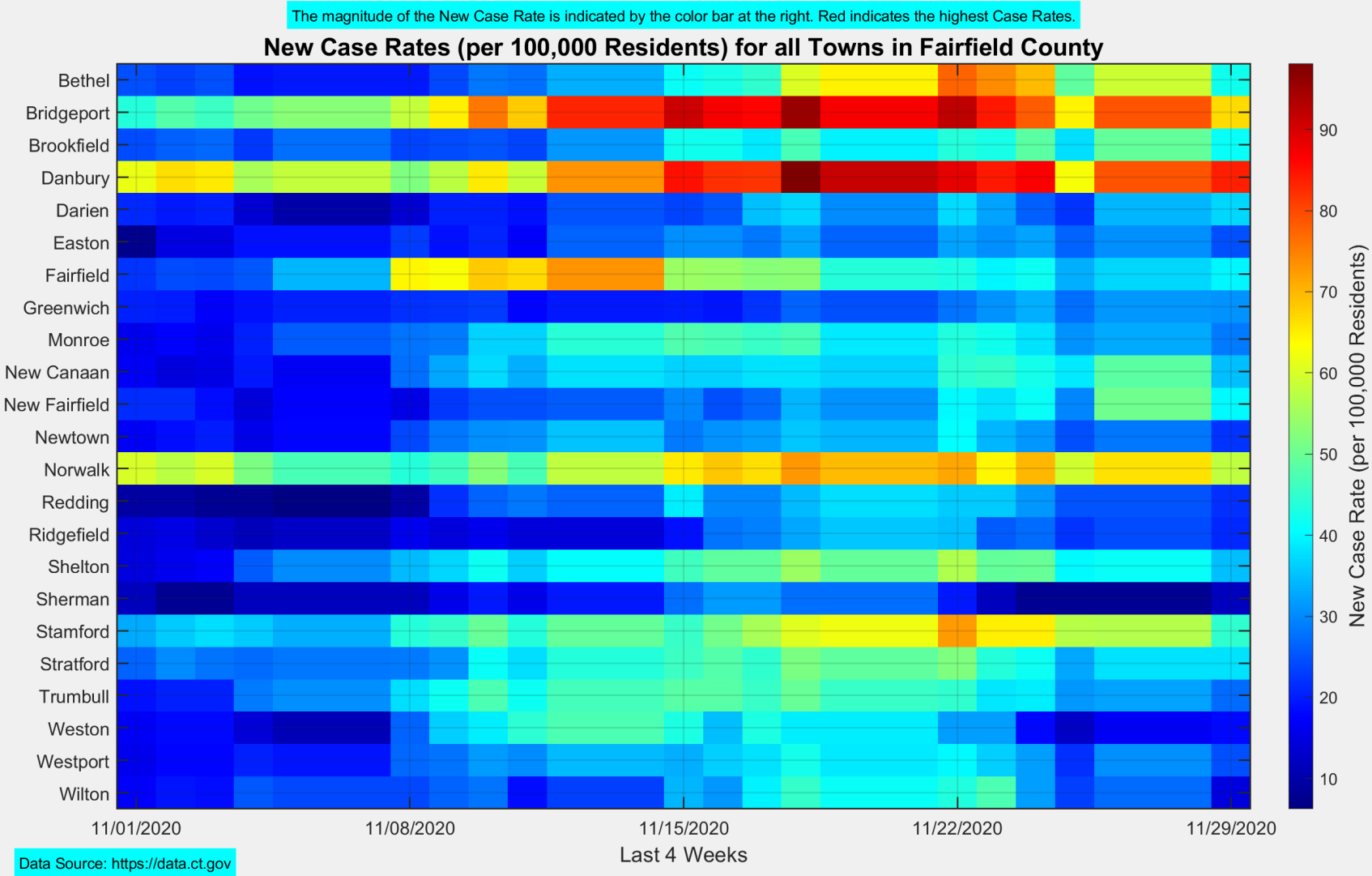
Ridgefield has one of the lower New Case Rates in Fairfield County



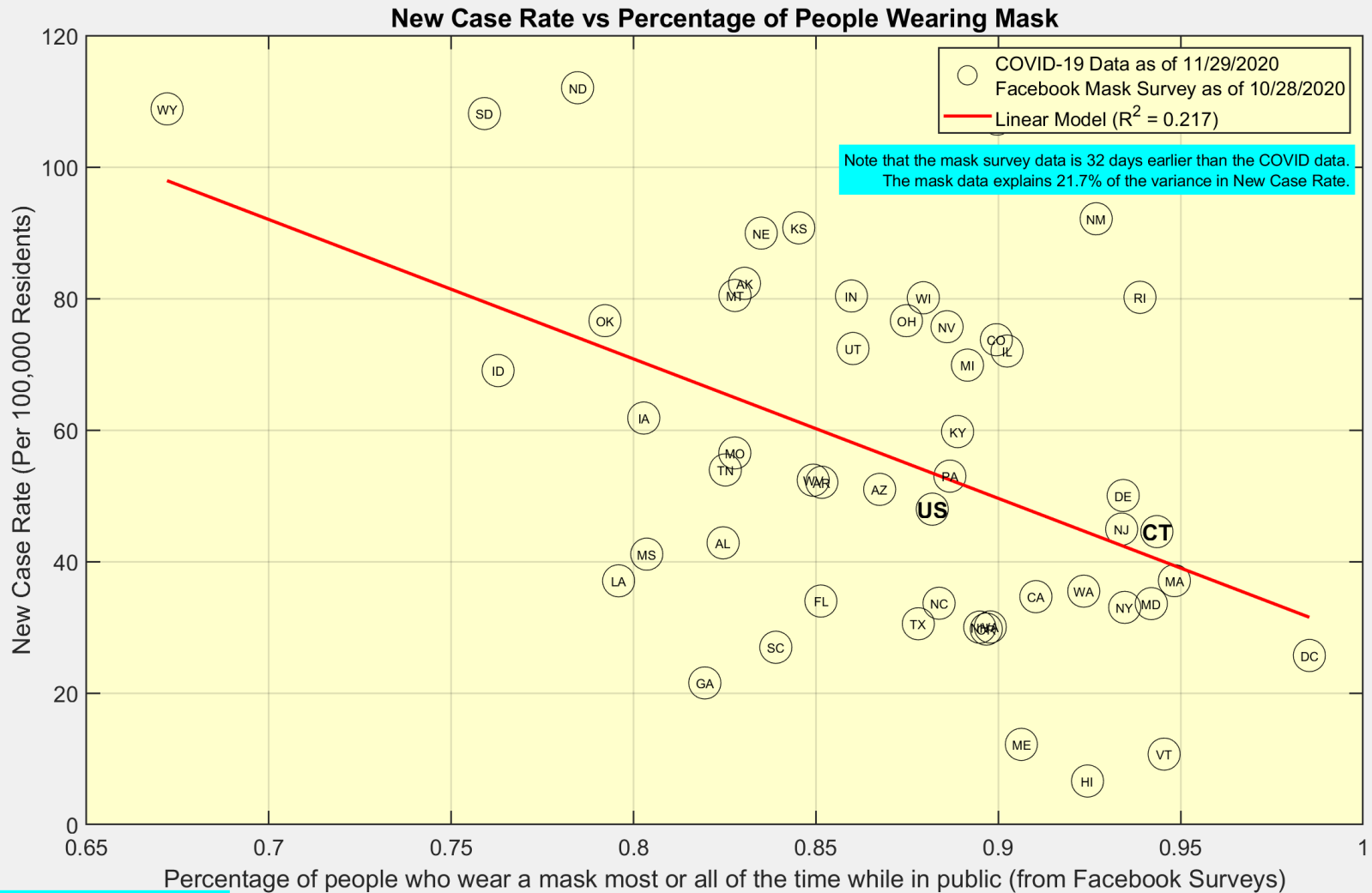
This is the distribution of New Cases over age group for the entire State of Connecticut



This heat map shows the progression of New Case Rates for all towns in Fairfield County



The state-level data confirm that wearing a mask reduces COVID case rates

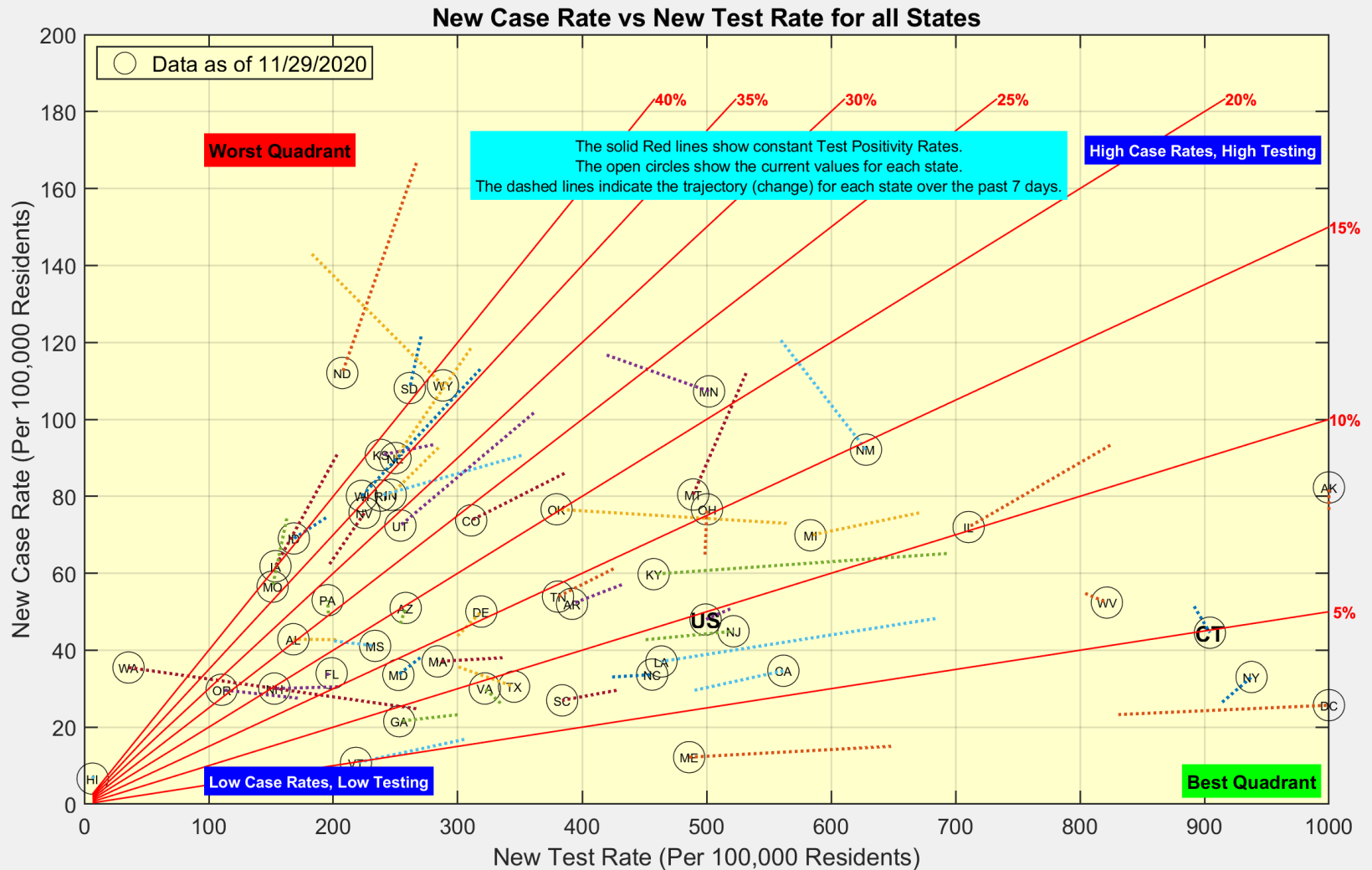


COVID Data: <https://covidtracking.com/data/api>
Mask Survey Data: Delphi COVIDcast, covidcast.cmu.edu



Ridgefield COVID-19 Task Force

The Connecticut Test Rate is higher than most states

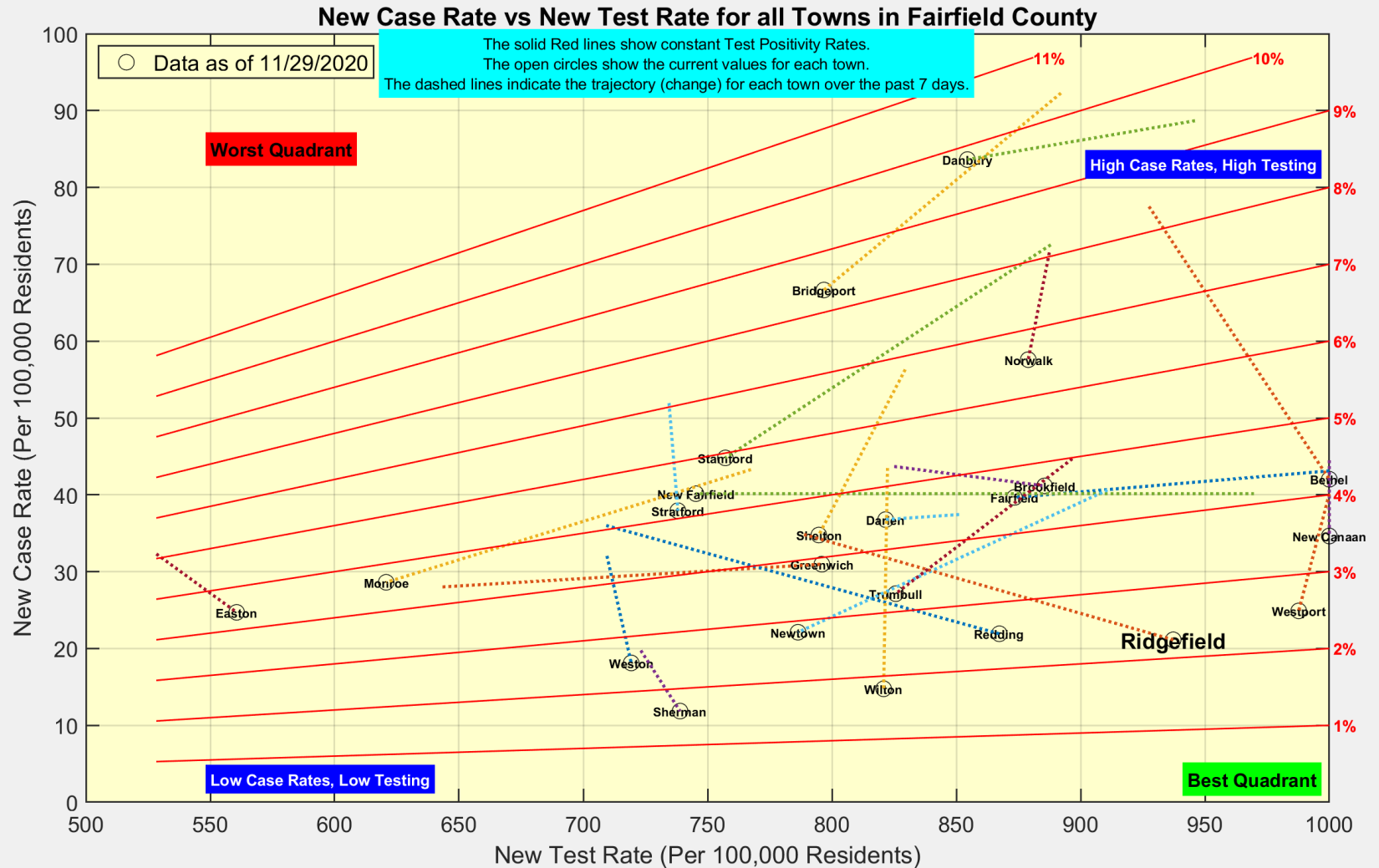


Data Source: <https://covidtracking.com/data/api>



Ridgefield COVID-19 Task Force

Ridgefield increased testing over past 7 days ... case rate and test positivity decreased



Data Source: <https://data.ct.gov>



Ridgefield COVID-19 Task Force