

Ridgefield COVID Summary

Ridgefield COVID-19 Task Force



Data downloaded from

<https://data.ct.gov/browse?category=Health+and+Human+Services>

<https://covid.cdc.gov/covid-data-tracker/#vaccinations>

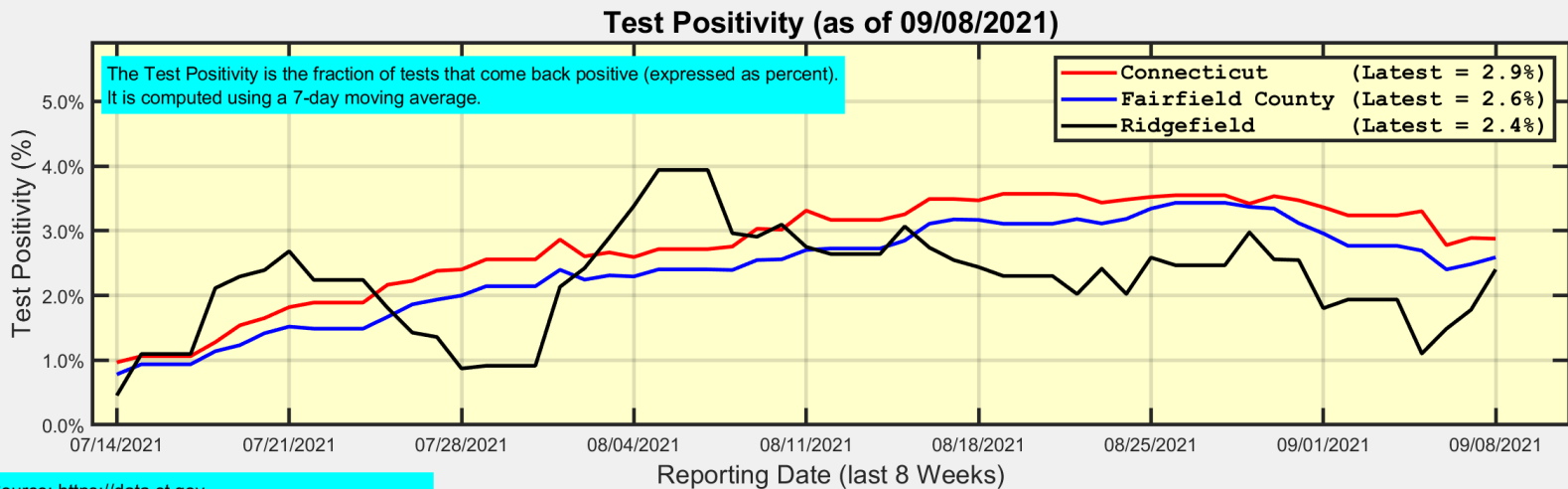
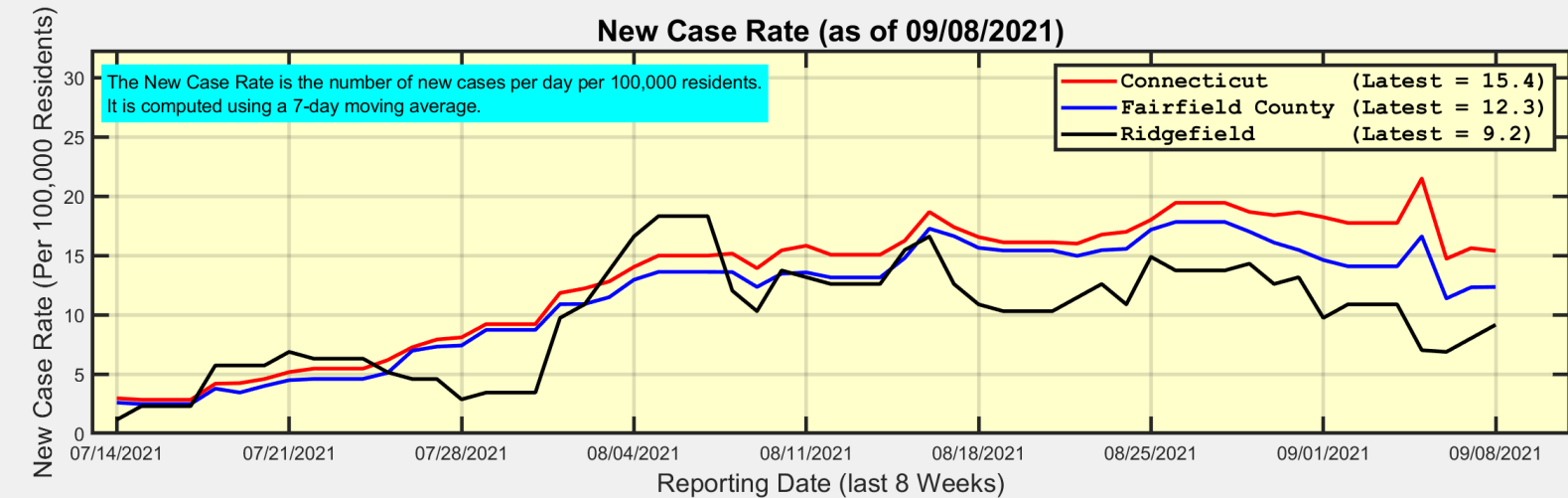
Thursday, 09/09/2021

Ridgefield Summary

Ridgefield	Wednesday 09/08/2021	Tuesday 09/07/2021
Number of New Cases Reported	3	4
New Case Rate (per 100,000 Residents)	9.2	8.0
New Test Rate (per 100,000 Residents)	381.2	450.5
Test Positivity	2.4%	1.8%
Fairfield County	Wednesday 09/08/2021	Tuesday 09/07/2021
Number of New Cases Reported	160	189
New Case Rate (per 100,000 Residents)	12.3	12.3
New Test Rate (per 100,000 Residents)	476.5	495.5
Test Positivity	2.6%	2.5%
Currently Hospitalized	83	84
Data Source: https://data.ct.gov. This report reflects data reported to the State through Wednesday 09/08/2021. The New Case Rate, New Test Rate, and Test Positivity are computed using 7-day moving averages.		



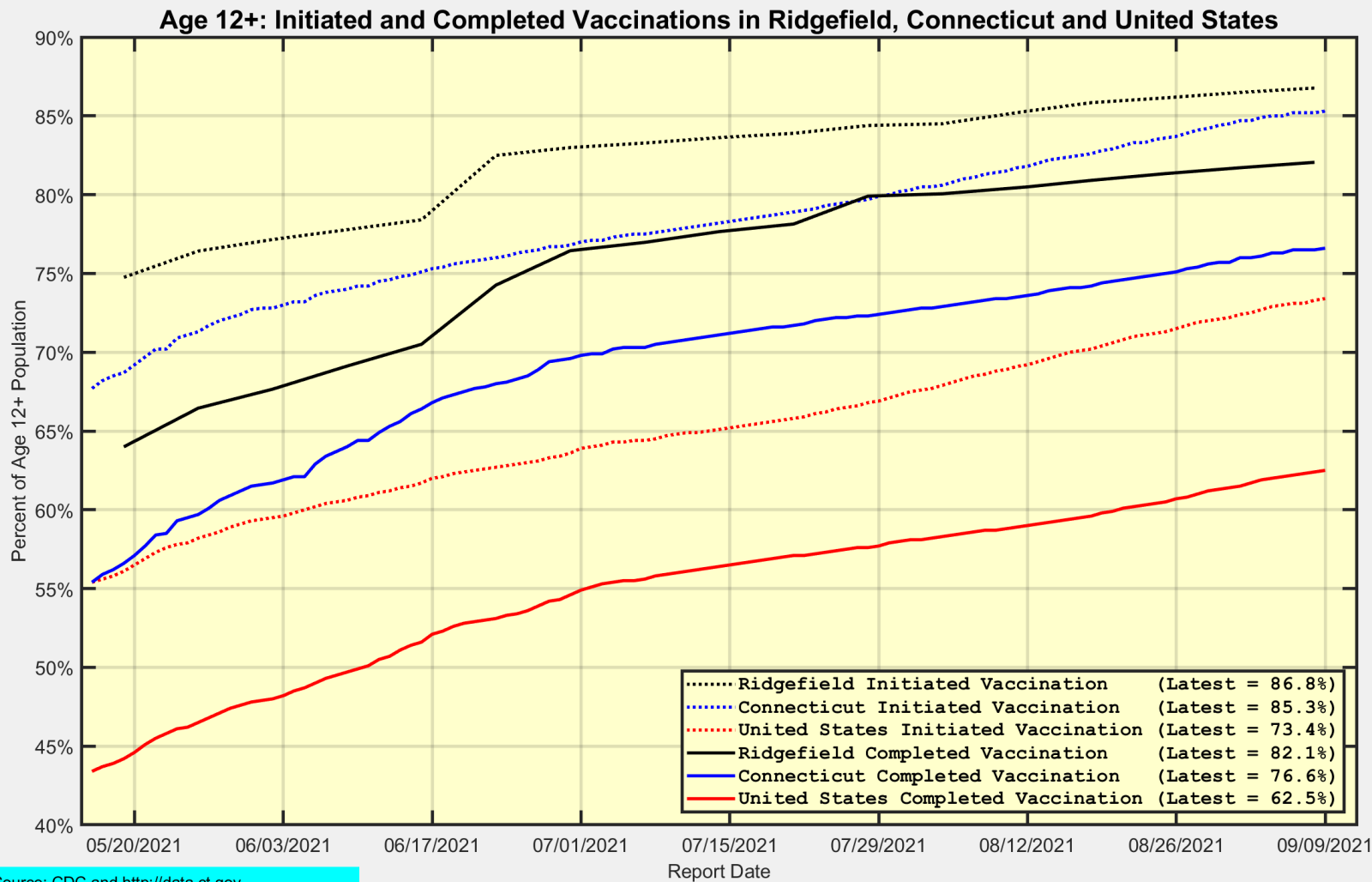
New Case Rates and Test Positivity for Connecticut, Fairfield County, and Ridgefield



Data Source: <https://data.ct.gov>
Analysis by Rick Lawrence (Ridgefield COVID Task Force)



Initiated and Completed Vaccination Percents for Age 12+ (Vaccine-Eligible) Population

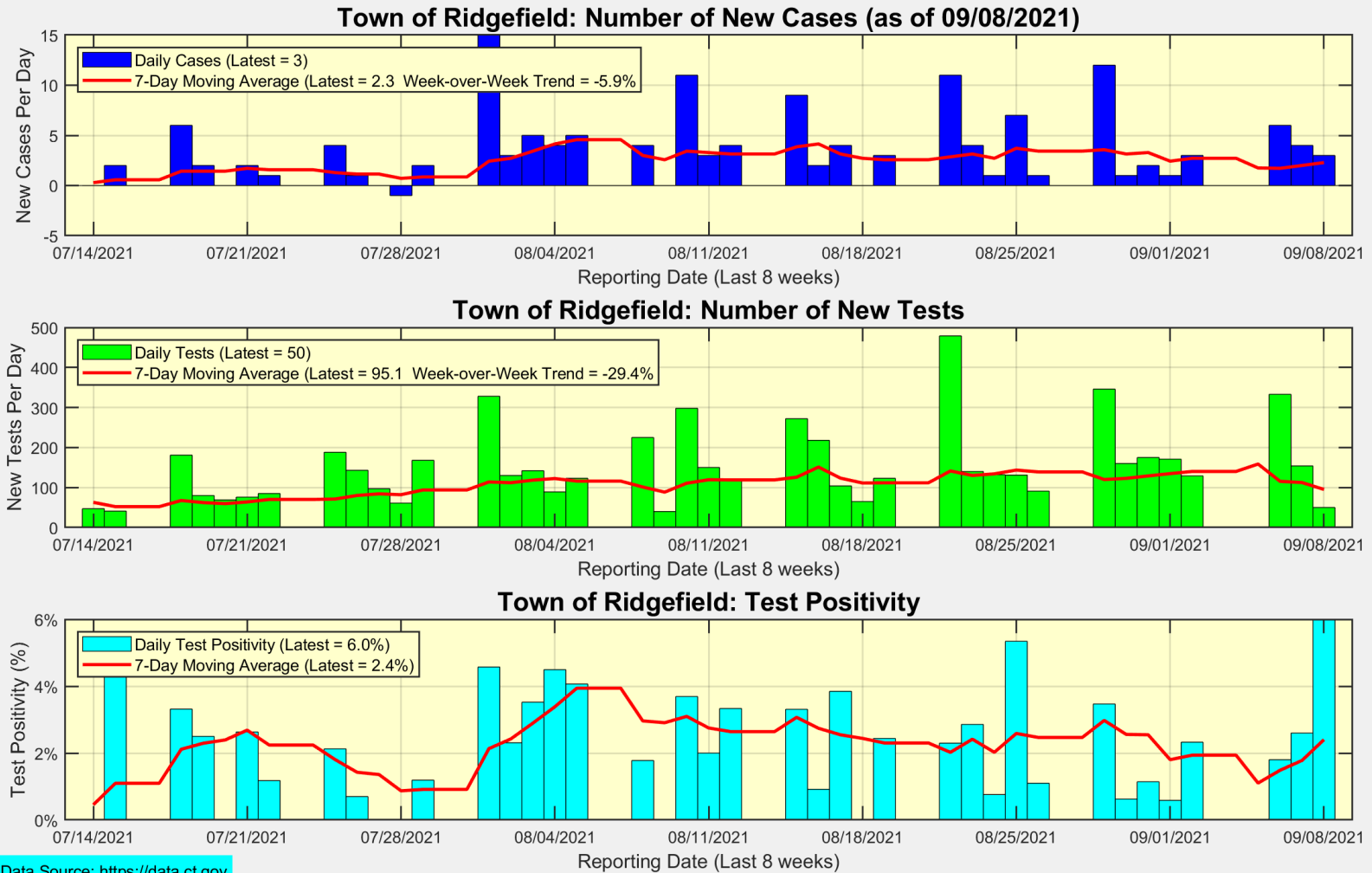


Data Source: CDC and <http://data.ct.gov>
Analysis: Rick Lawrence (Ridgefield COVID Task Force)

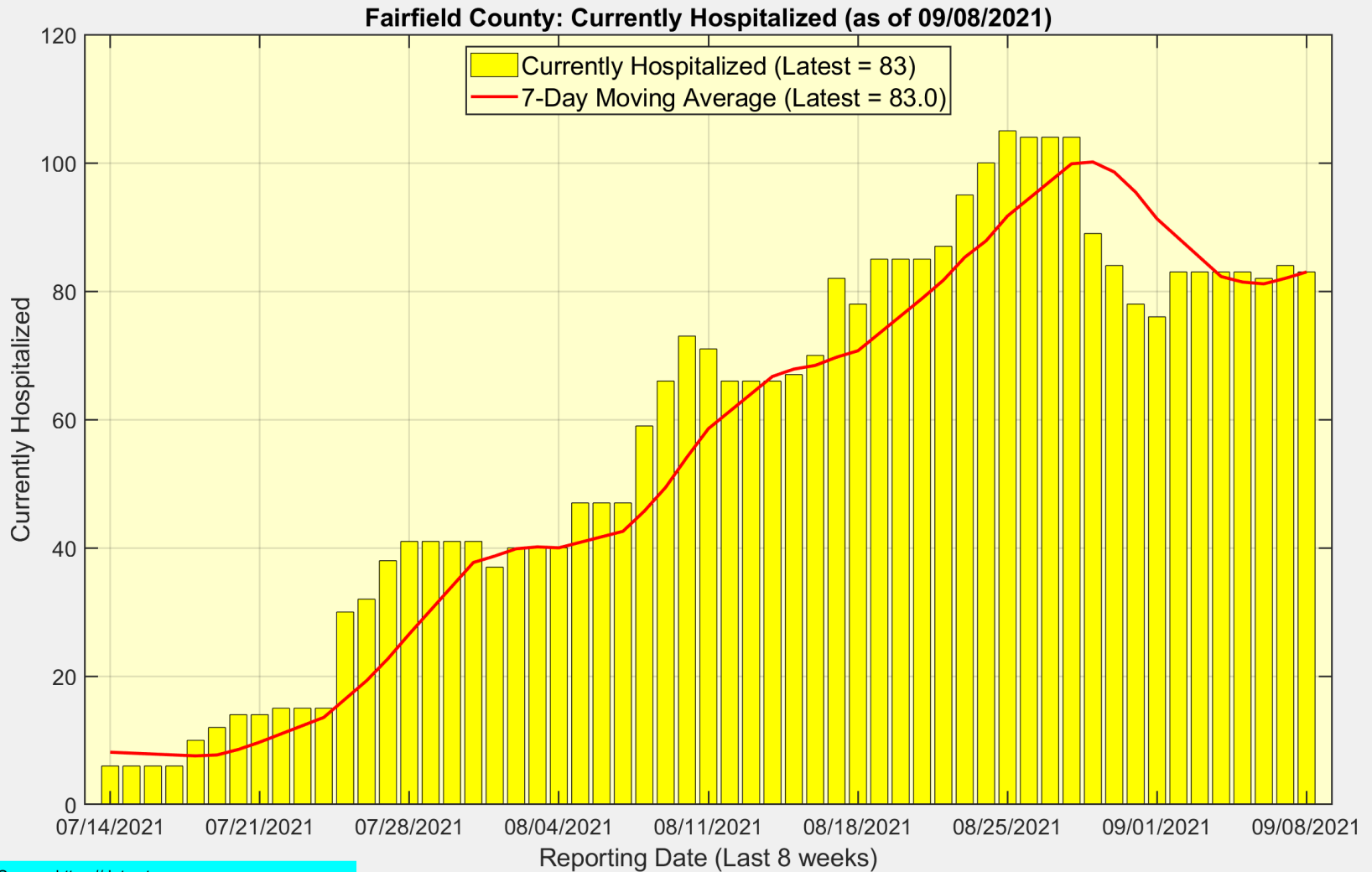


Ridgefield COVID-19 Task Force

New Cases, New Tests, and Test Positivity for Ridgefield



Currently Hospitalized in Fairfield County



Data Source: <https://data.ct.gov>
Analysis: Rick Lawrence (Ridgefield COVID Task Force)



Ridgefield COVID-19 Task Force

Connecticut and US Vaccination Summary

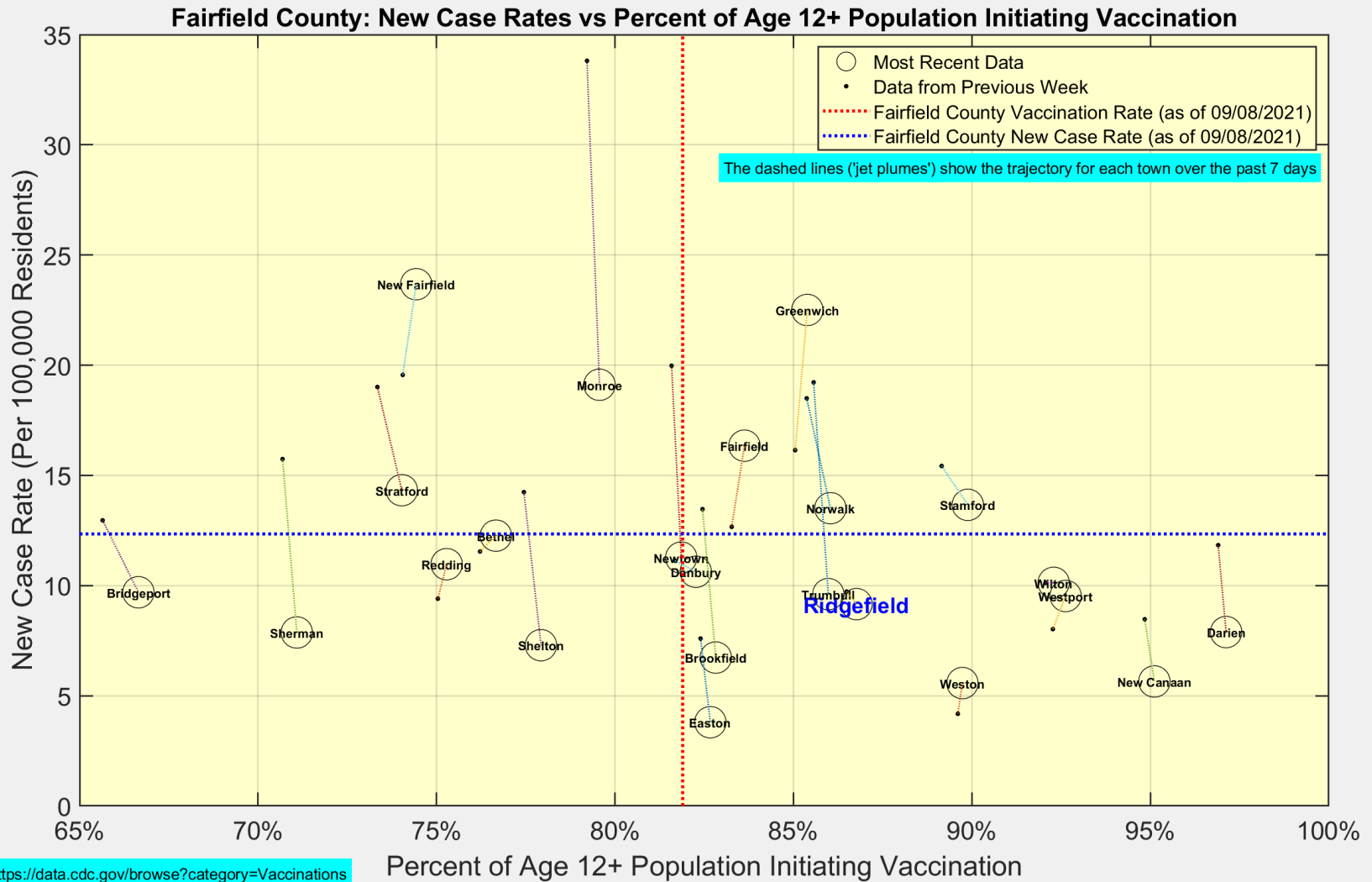
Connecticut (as of Thursday September 09, 2021)	Cumulative	Daily
Doses Delivered	5,424,905	9,520
Doses Administered	4,880,740	5,913
Percent of Age 12+ Population Who Have Completed Vaccination	76.6%	
Connecticut Rank Among 50 States and DC	2	
Percent of Age 12+ Population Who Have Initiated Vaccination	85.3%	
Connecticut Rank Among 50 States and DC	4	

United States (as of Thursday September 09, 2021)	Cumulative	Daily
Doses Delivered	452,781,195	1,015,514
Doses Administered	377,622,065	786,493
Percent of Age 12+ Population Who Have Completed Vaccination	62.5%	
Percent of Age 12+ Population Who Have Initiated Vaccination	73.4%	

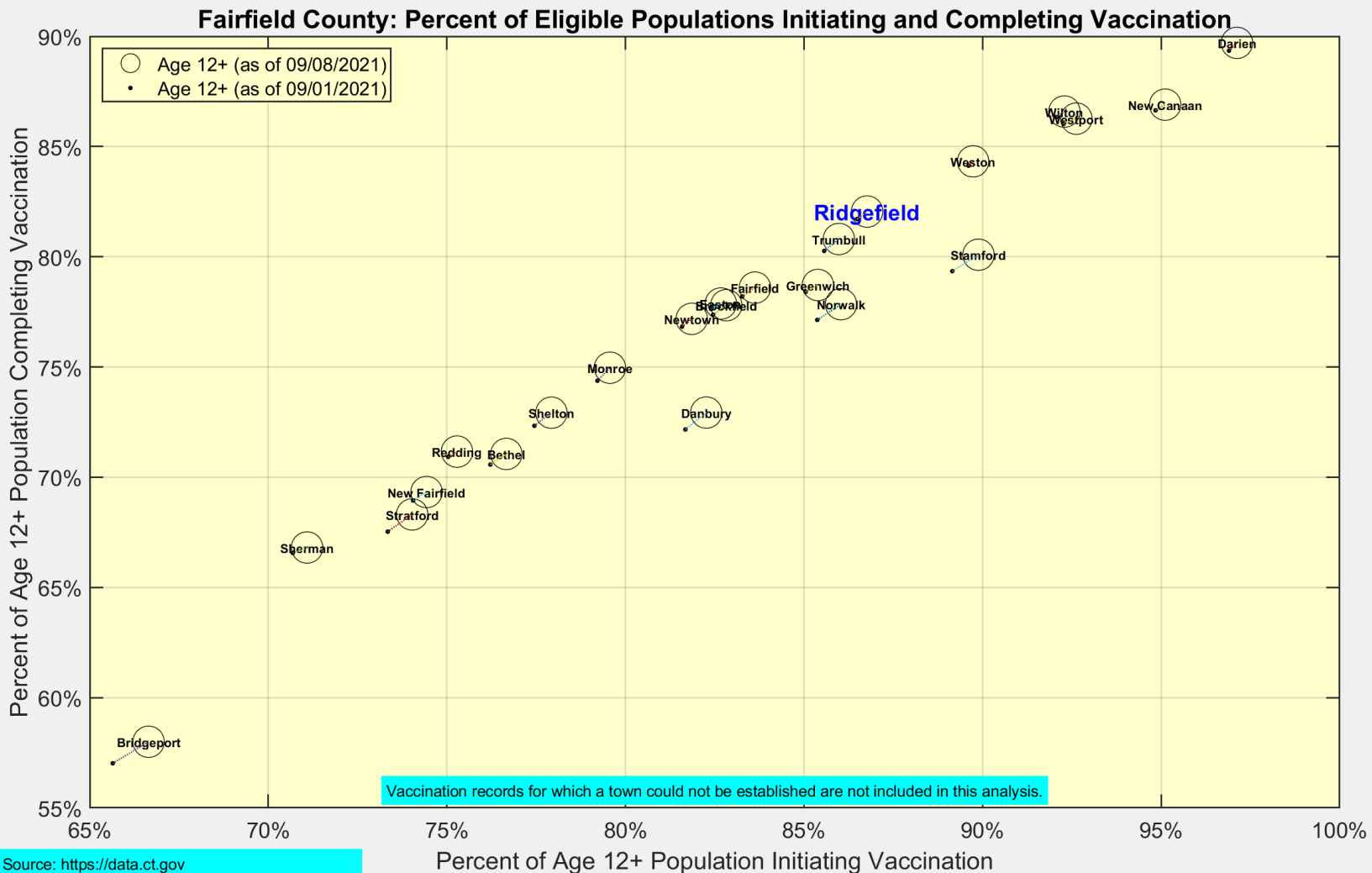
Data Source: <https://covid.cdc.gov/covid-data-tracker/#vaccinations>.
The Daily numbers are the most recent 7-day moving averages.



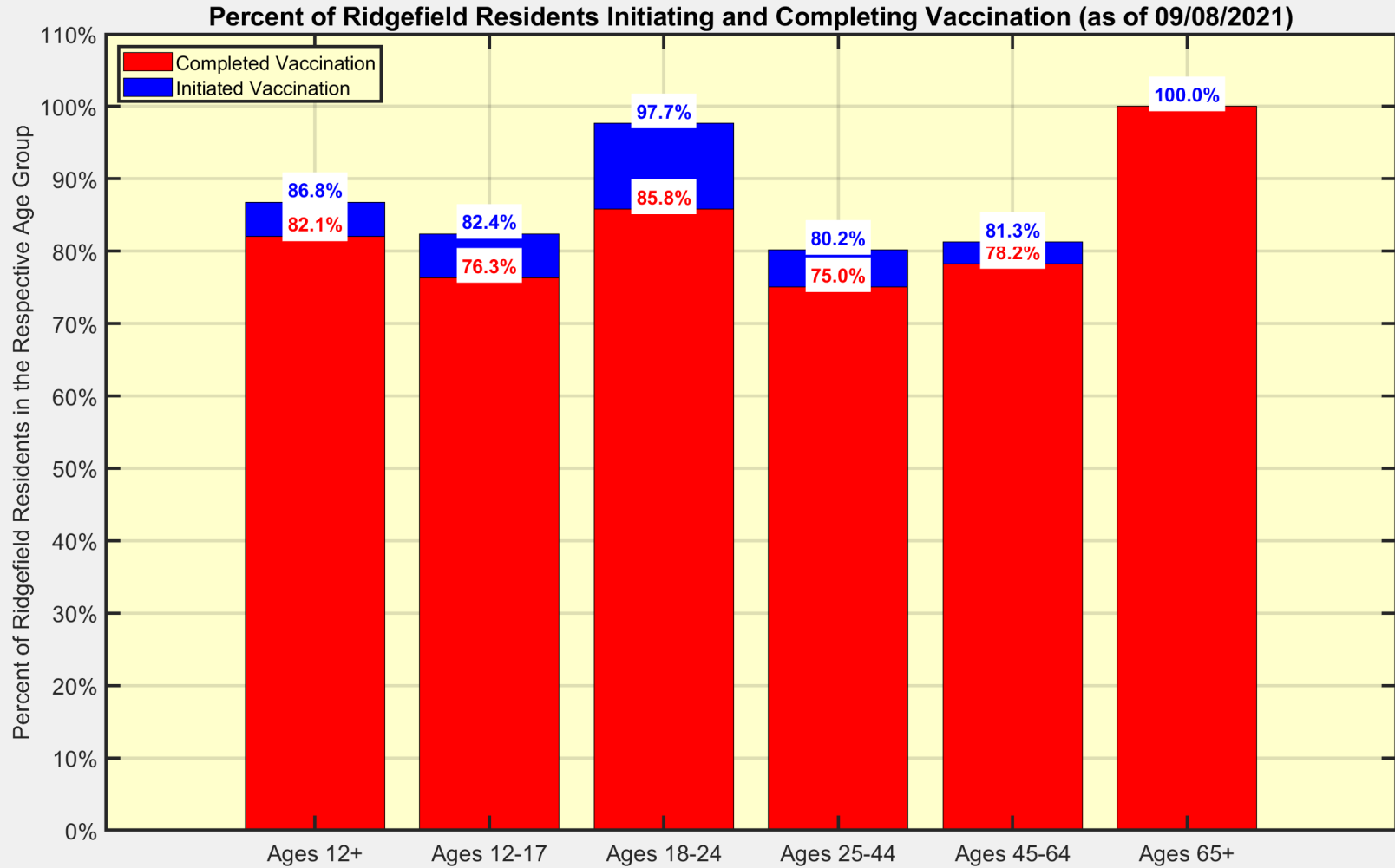
New Case Rates vs Vaccination Rates for Towns in Fairfield County



Latest Vaccination Rates for Towns in Fairfield County



Latest Vaccination Rates for Ridgefield Residents



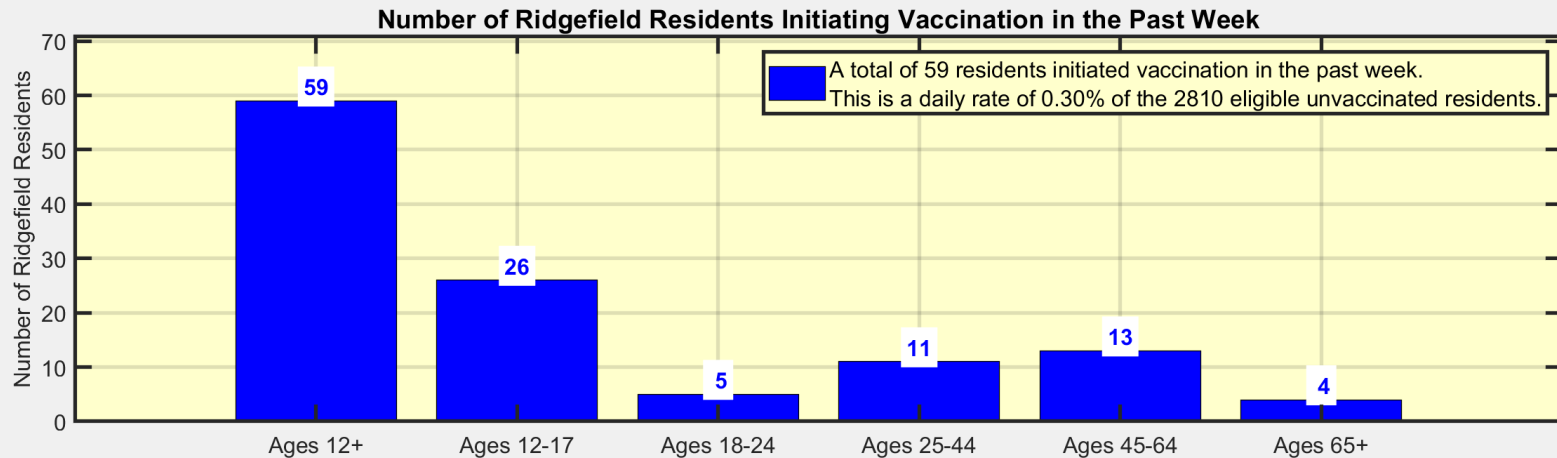
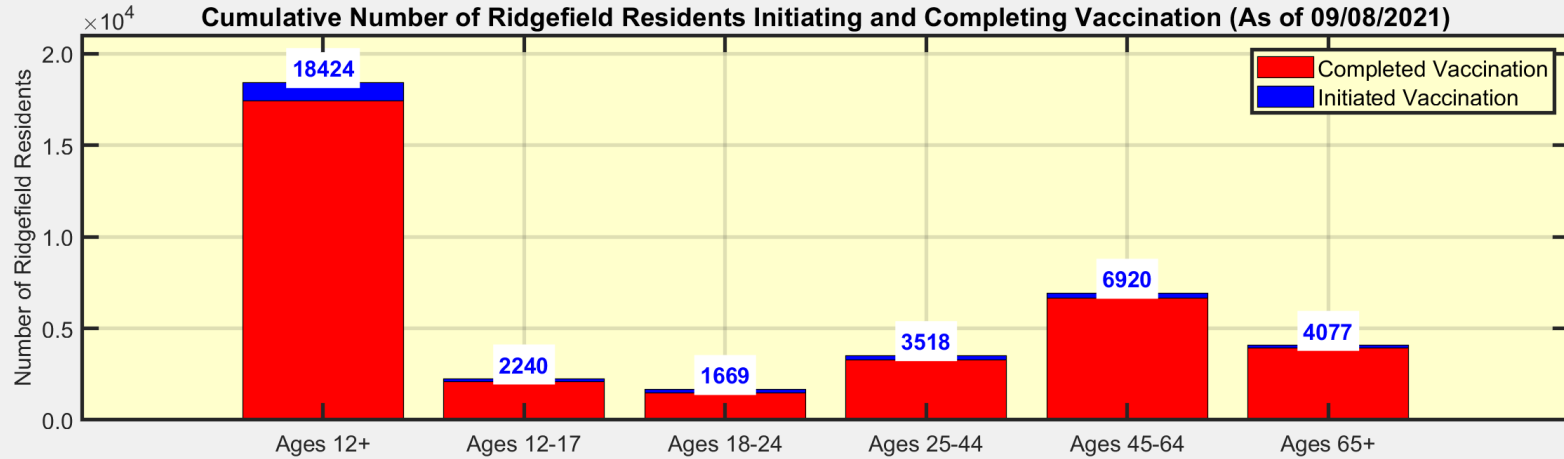
Data Source: <https://data.ct.gov>

Analysis: Rick Lawrence (Ridgefield COVID Task Force)



Ridgefield COVID-19 Task Force

Vaccination Numbers for Ridgefield Residents



Data Source: <https://data.ct.gov>
 Analysis: Rick Lawrence (Ridgefield COVID Task Force)



Ridgefield COVID-19 Task Force