

Ridgefield COVID Summary

Ridgefield COVID-19 Task Force



Data downloaded from
<https://data.ct.gov/browse?category=Health+and+Human+Services>

Data downloaded on Thursday, April 08, 2021 at 4:00 PM
This reflects data through Wednesday, April 07, 2021

Ridgefield Summary

Ridgefield	Wednesday 04/07/2021	Tuesday 04/06/2021
Number of New Cases Reported	9	3
New Case Rate (per 100,000 Residents)	17.7	20.0
New Test Rate (per 100,000 Residents)	648.5	748.1
Test Positivity	2.7%	2.7%
Fairfield County	Wednesday 04/07/2021	Tuesday 04/06/2021
Number of New Cases Reported	334	313
New Case Rate (per 100,000 Residents)	32.9	35.4
New Test Rate (per 100,000 Residents)	811.0	811.6
Test Positivity	4.1%	4.4%
Currently Hospitalized	145	136

Data Source: <https://data.ct.gov>. This report reflects data reported to the State through Wednesday 04/07/2021. The New Case Rate, New Test Rate, and Test Positivity are computed using 7-day moving averages.

Fairfield County ranks 236 (Highest 7.5%) out of 3142 US counties in New Case Rate (Per 100,000 Residents)

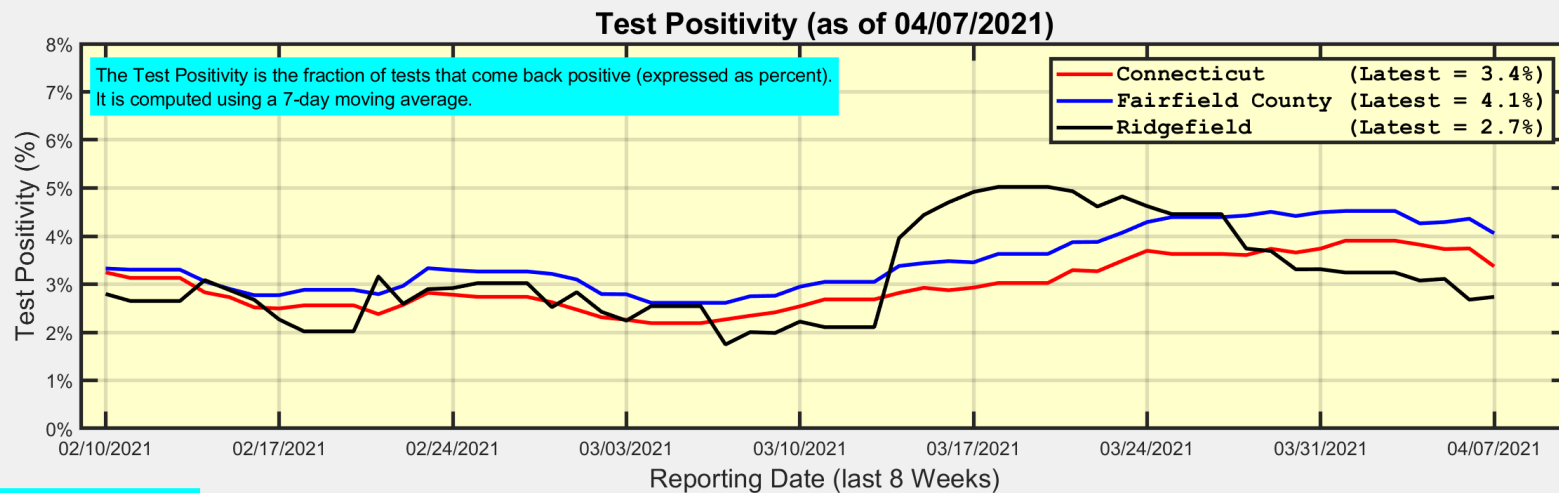
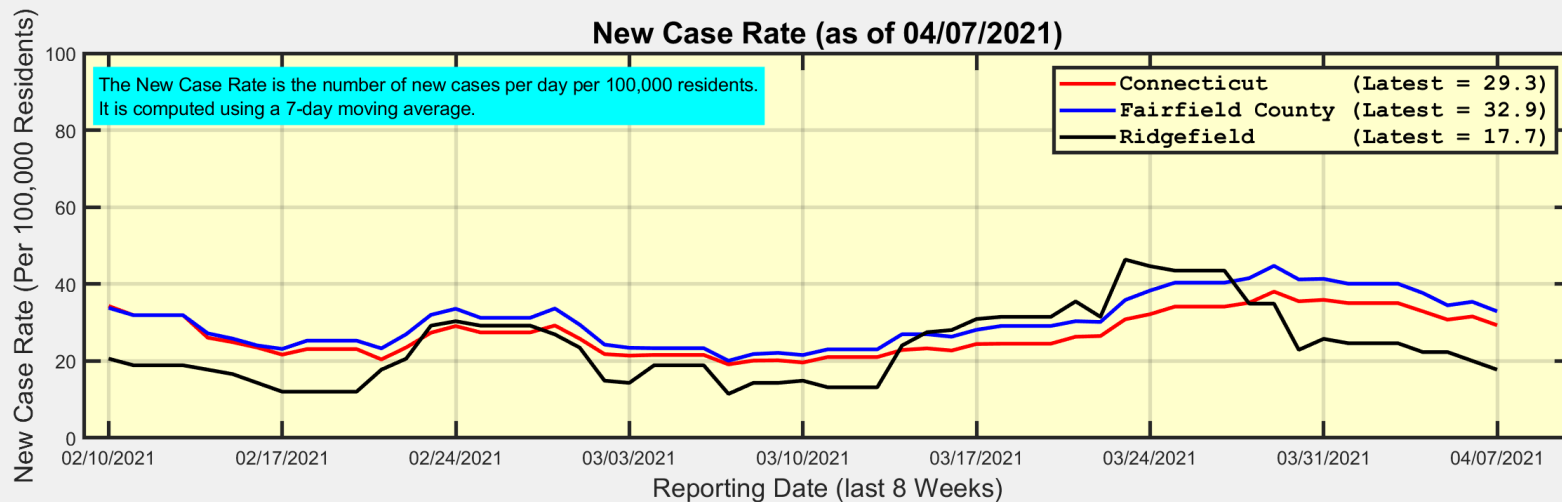
Our data science confirms CDC and other studies:

Wearing a Mask Reduces COVID Case Rates



Ridgefield COVID-19 Task Force

New Case Rates and Test Positivity for Connecticut, Fairfield County, and Ridgefield



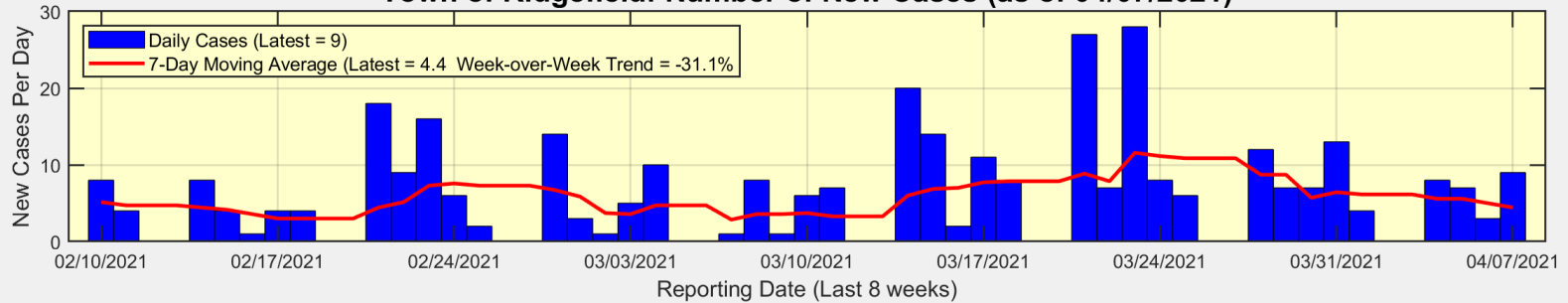
Data Source: <https://data.ct.gov>



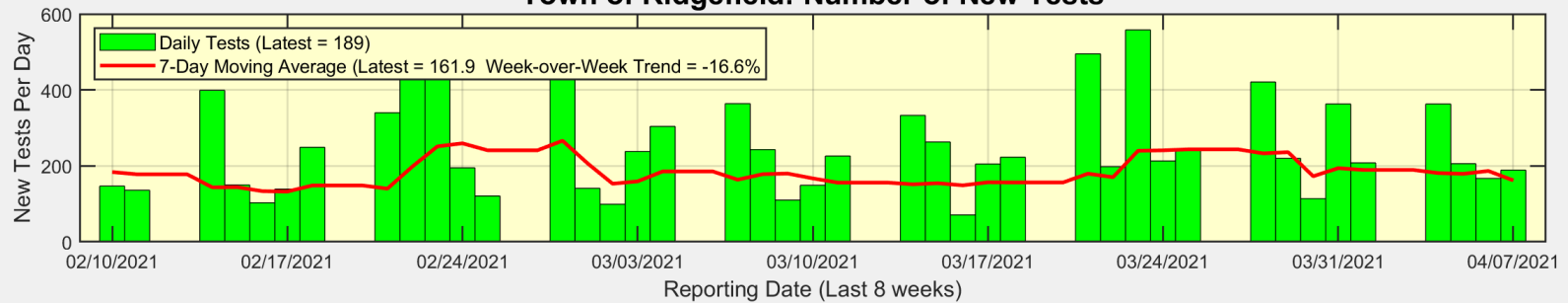
Ridgefield COVID-19 Task Force

New Cases, New Tests, and Test Positivity for Ridgefield

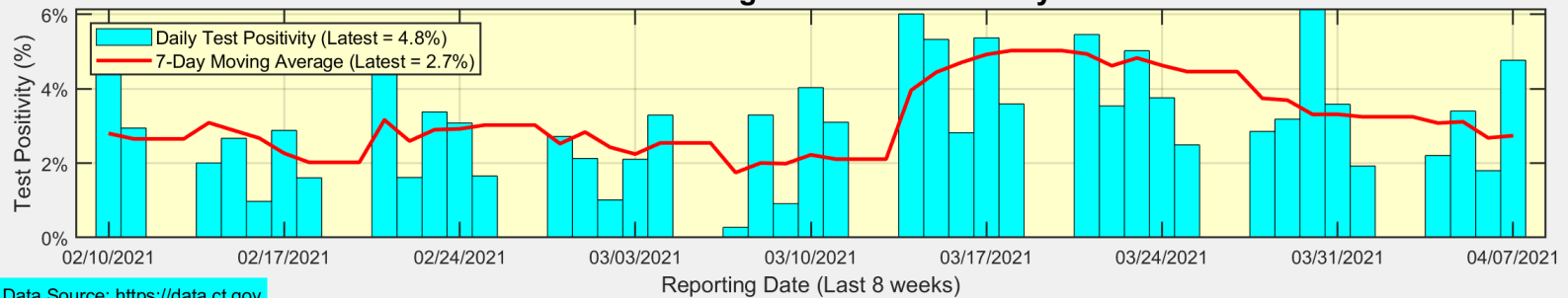
Town of Ridgefield: Number of New Cases (as of 04/07/2021)



Town of Ridgefield: Number of New Tests



Town of Ridgefield: Test Positivity

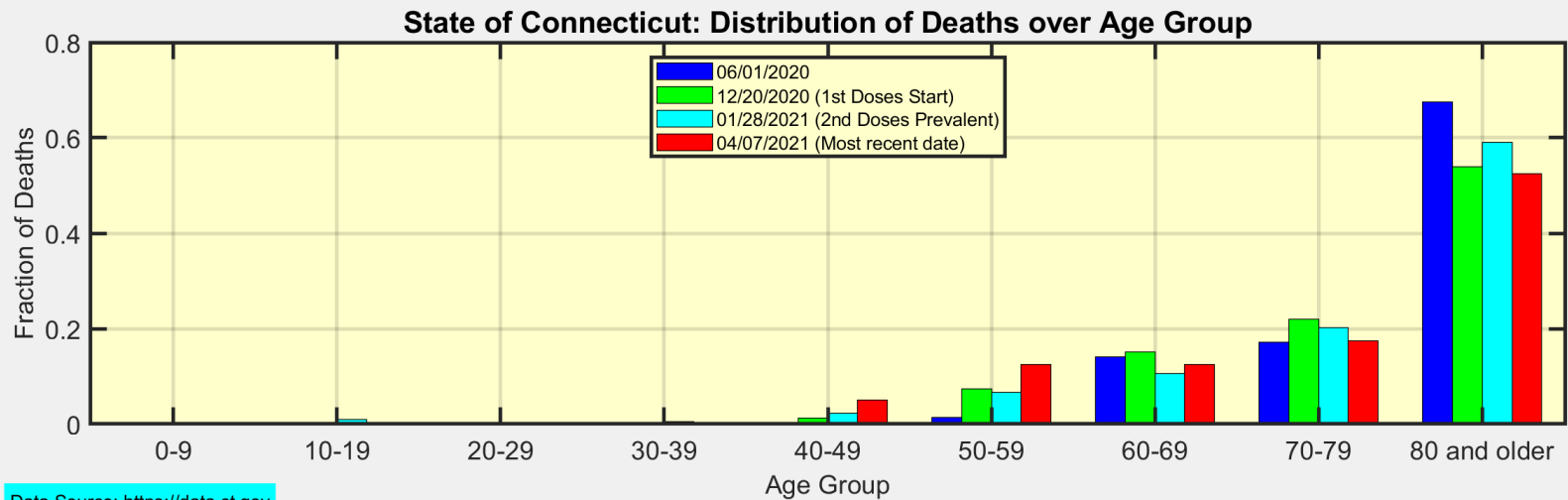
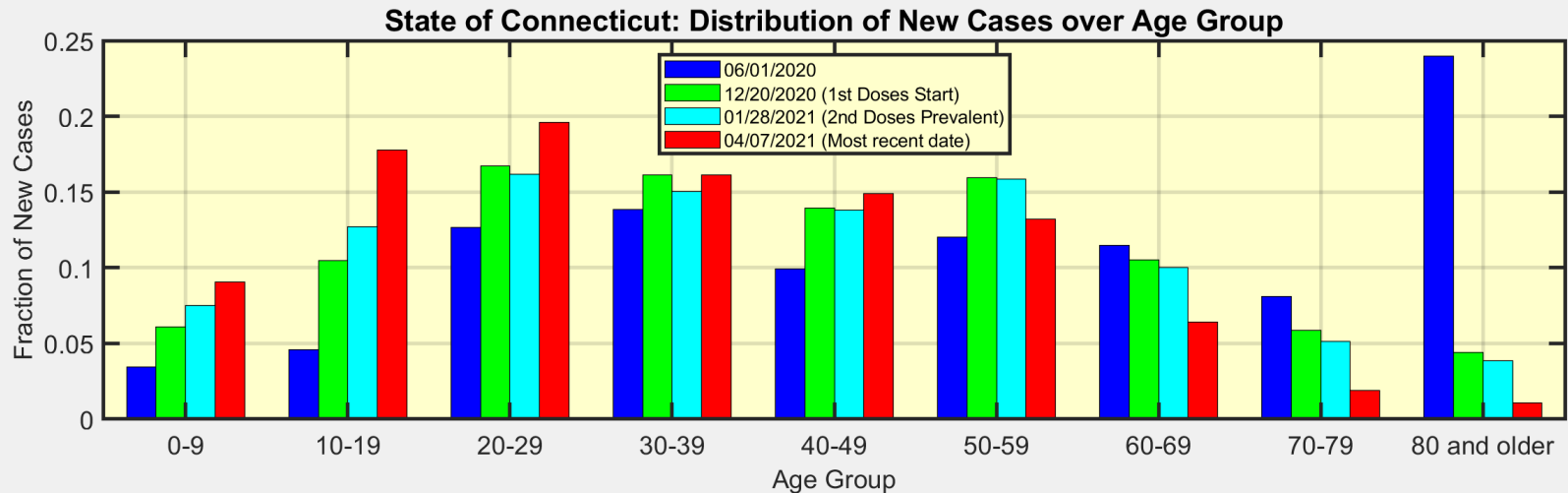


Data Source: <https://data.ct.gov>



Ridgefield COVID-19 Task Force

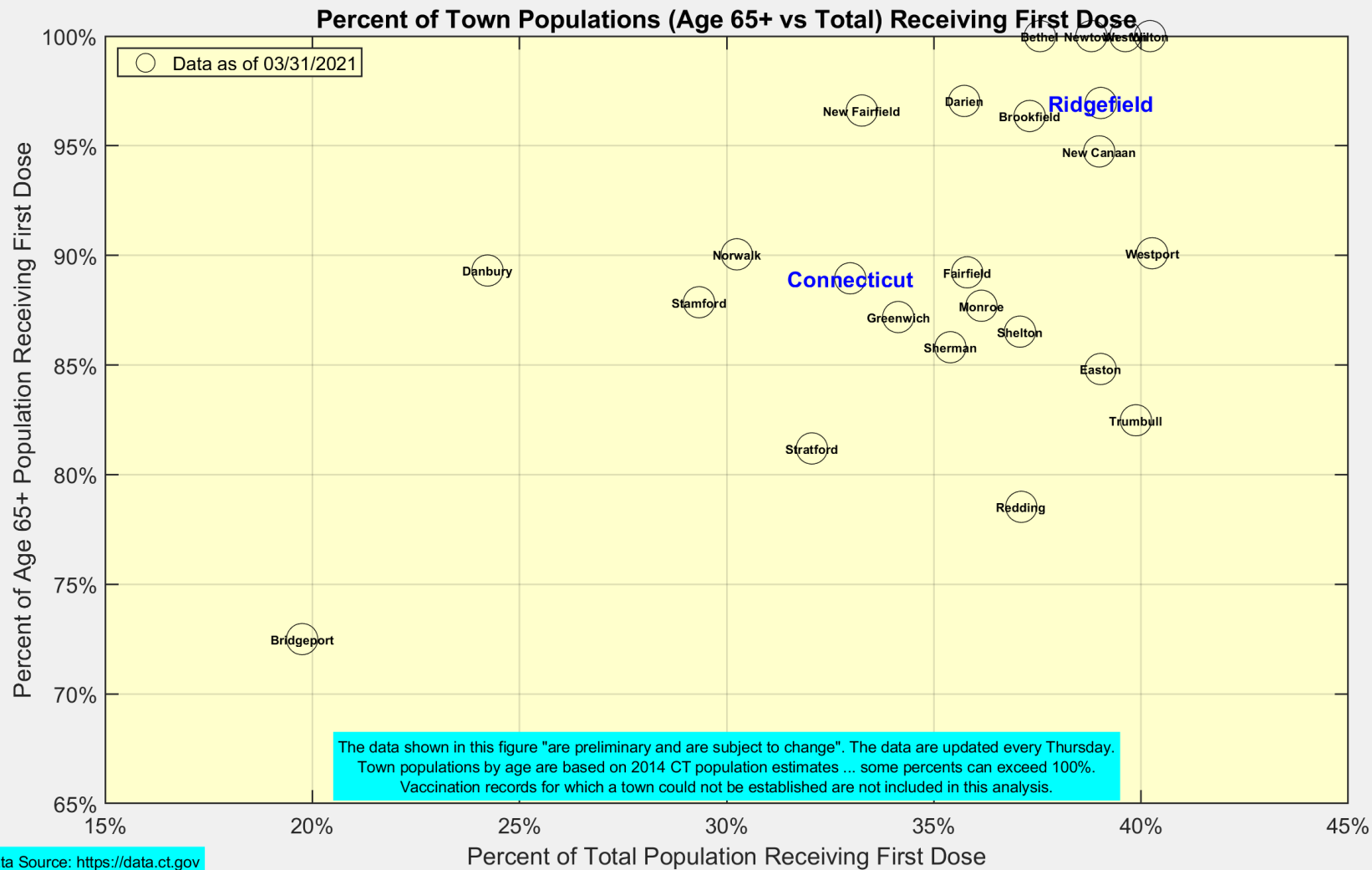
We are seeing more cases in ages 10-39 as ages 60+ become fully vaccinated



Data Source: <https://data.ct.gov>



Latest Vaccination Rates for Towns in Fairfield County



Number of Ridgefield Residents Receiving First Dose (Weekly)

