

Ridgefield COVID Summary

Ridgefield COVID-19 Task Force



Data downloaded from
<https://data.ct.gov/browse?category=Health+and+Human+Services>

Data downloaded on Friday, April 30, 2021 at 4:00 PM
This reflects data through Thursday, April 29, 2021

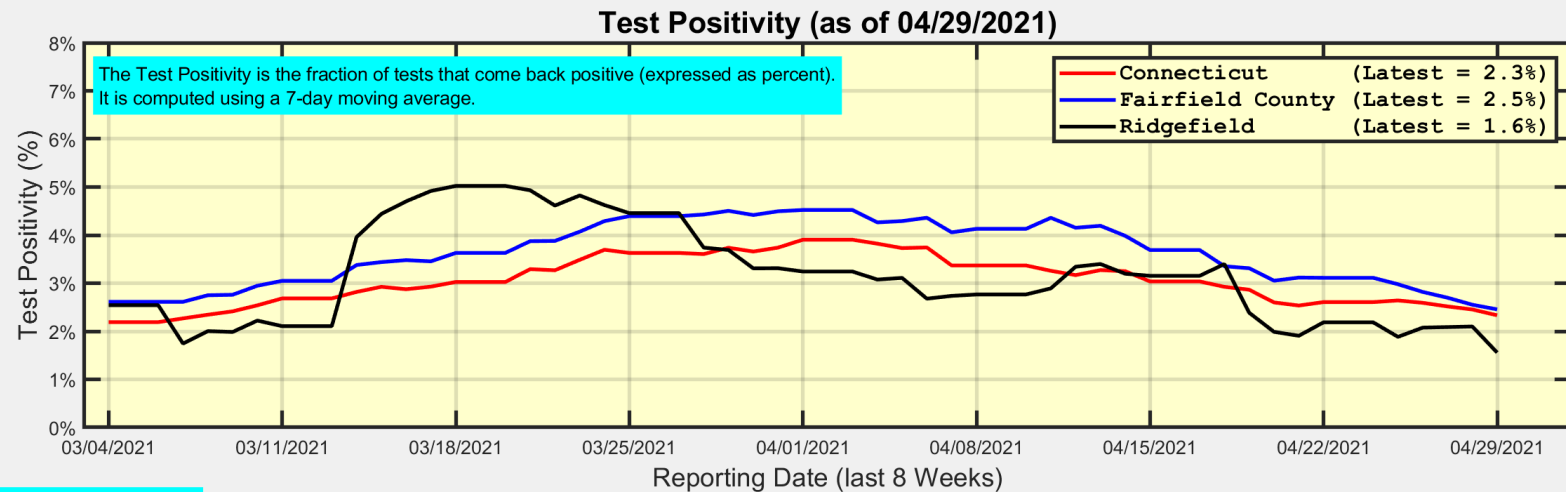
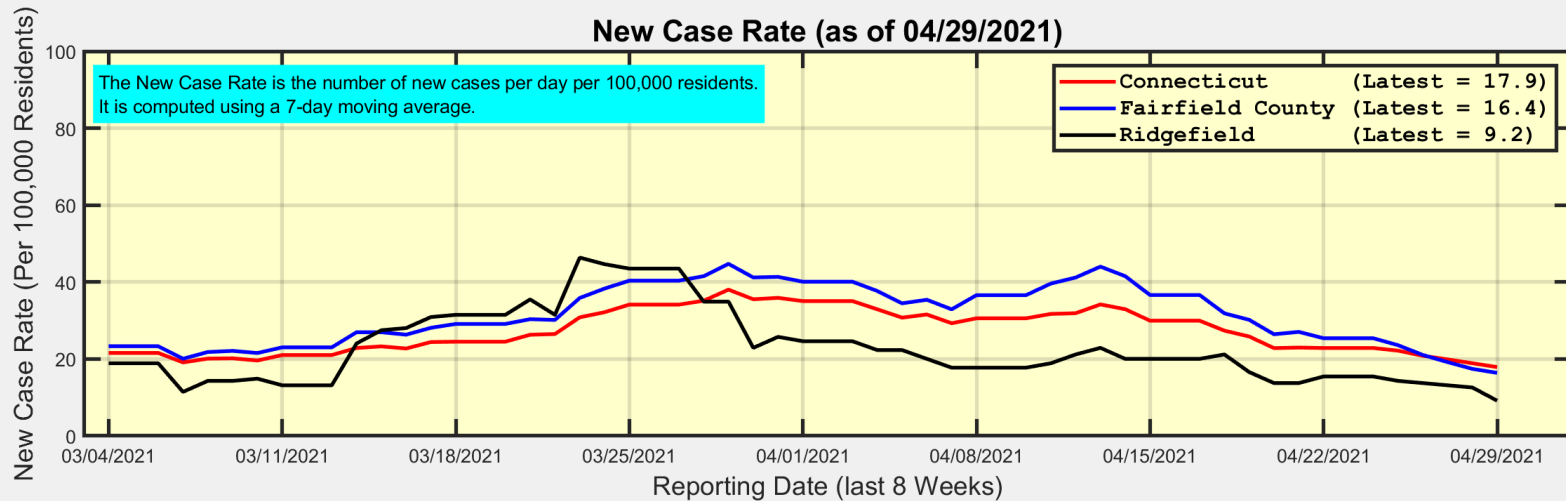
Ridgefield Summary

Ridgefield	Thursday 04/29/2021	Wednesday 04/28/2021
Number of New Cases Reported	1	3
New Case Rate (per 100,000 Residents)	9.2	12.6
New Test Rate (per 100,000 Residents)	588.4	599.8
Test Positivity	1.6%	2.1%
Fairfield County	Thursday 04/29/2021	Wednesday 04/28/2021
Number of New Cases Reported	183	95
New Case Rate (per 100,000 Residents)	16.4	17.4
New Test Rate (per 100,000 Residents)	667.4	683.1
Test Positivity	2.5%	2.6%
Currently Hospitalized	113	127

Our data science confirms CDC and other studies:
Wearing a Mask Reduces COVID Case Rates



New Case Rates and Test Positivity for Connecticut, Fairfield County, and Ridgefield



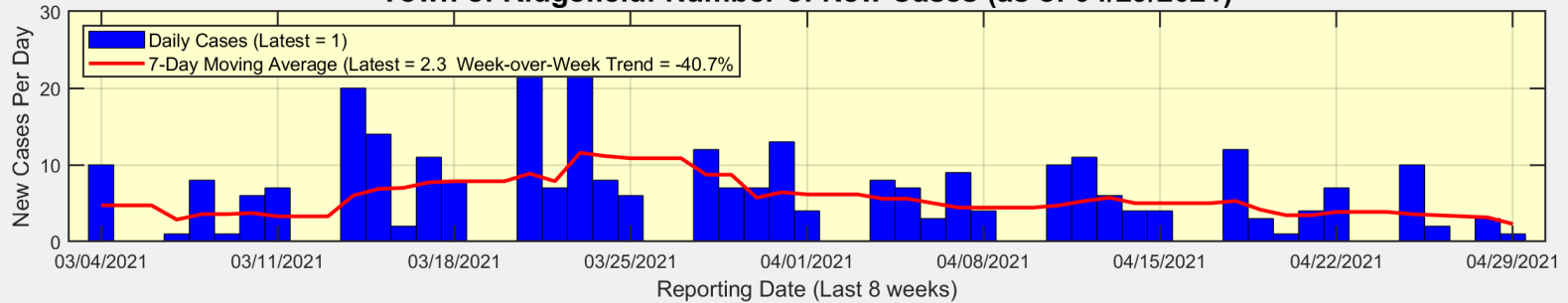
Data Source: <https://data.ct.gov>



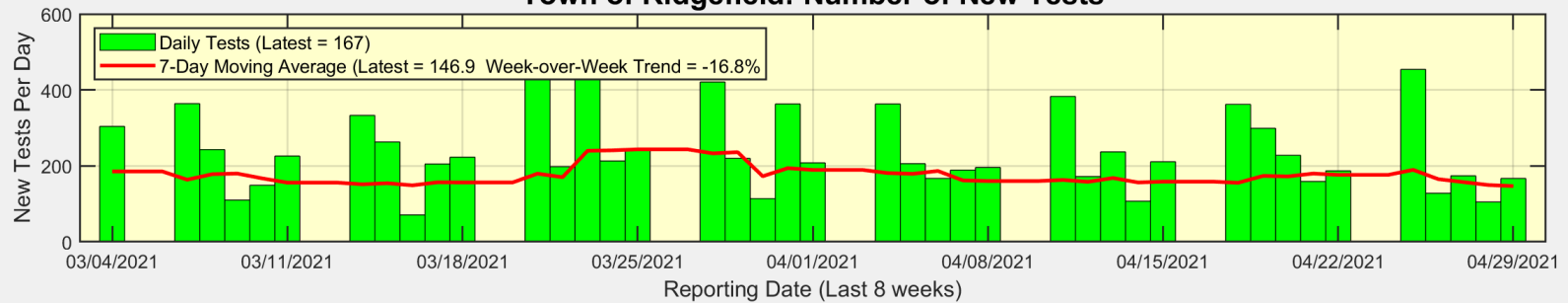
Ridgefield COVID-19 Task Force

New Cases, New Tests, and Test Positivity for Ridgefield

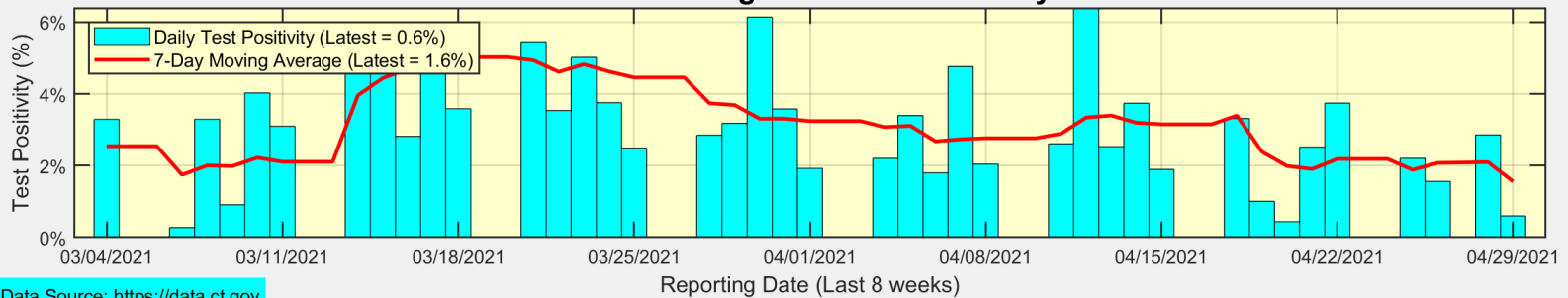
Town of Ridgefield: Number of New Cases (as of 04/29/2021)



Town of Ridgefield: Number of New Tests



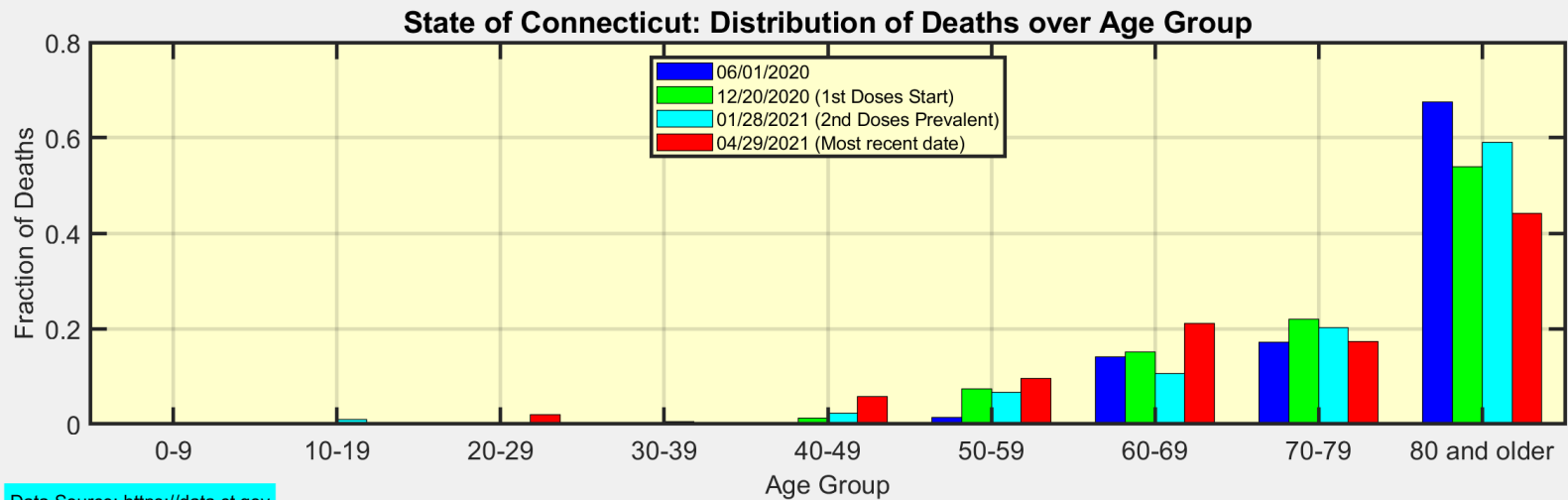
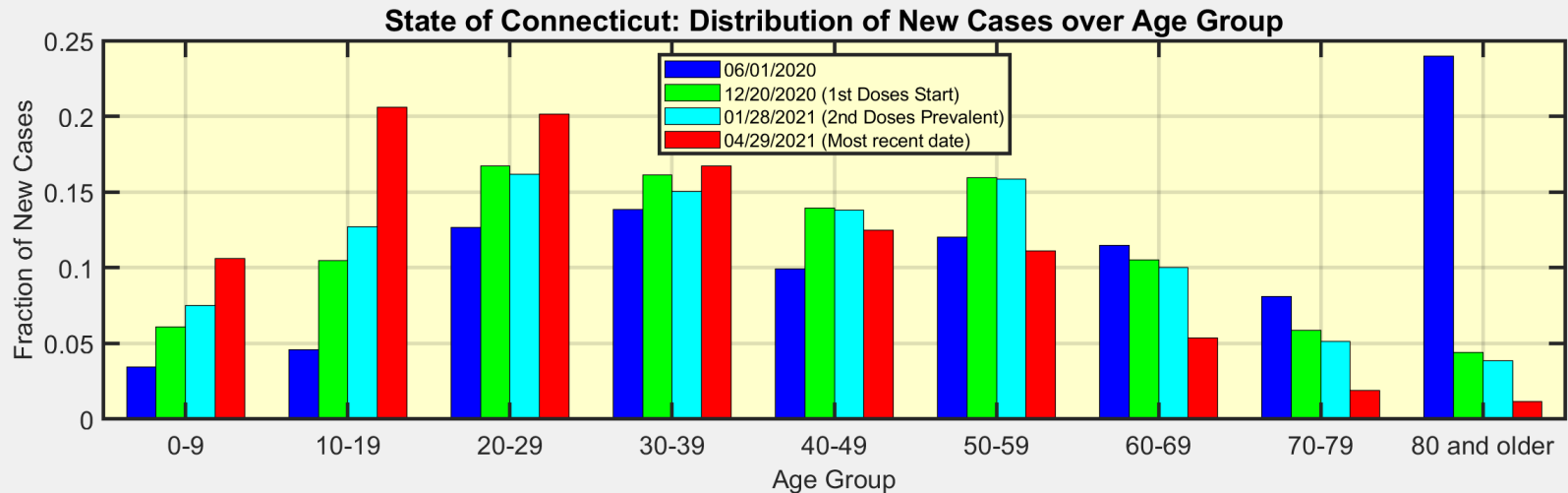
Town of Ridgefield: Test Positivity



Data Source: <https://data.ct.gov>



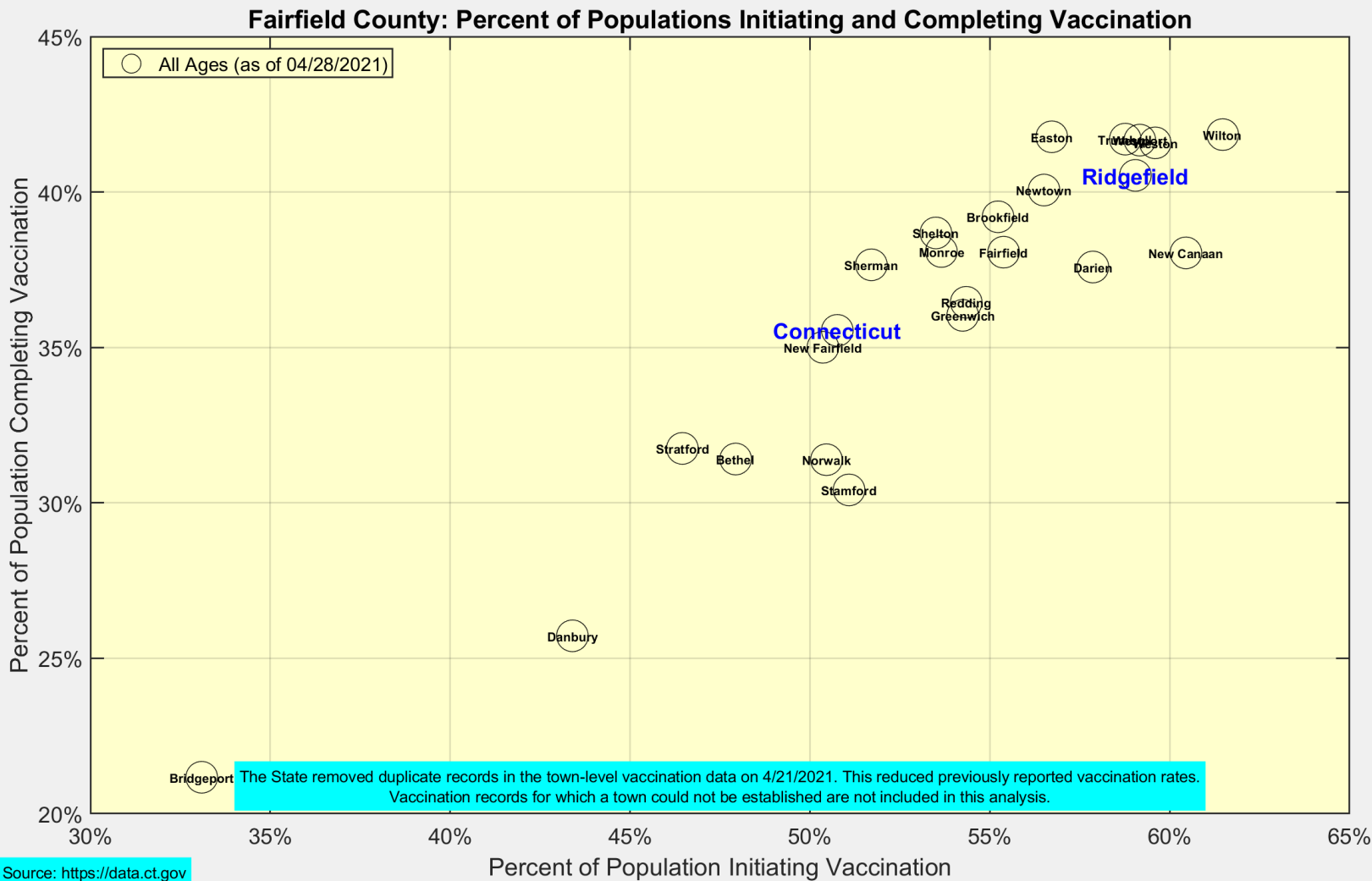
We are seeing more cases in ages 10-39 as ages 60+ become fully vaccinated



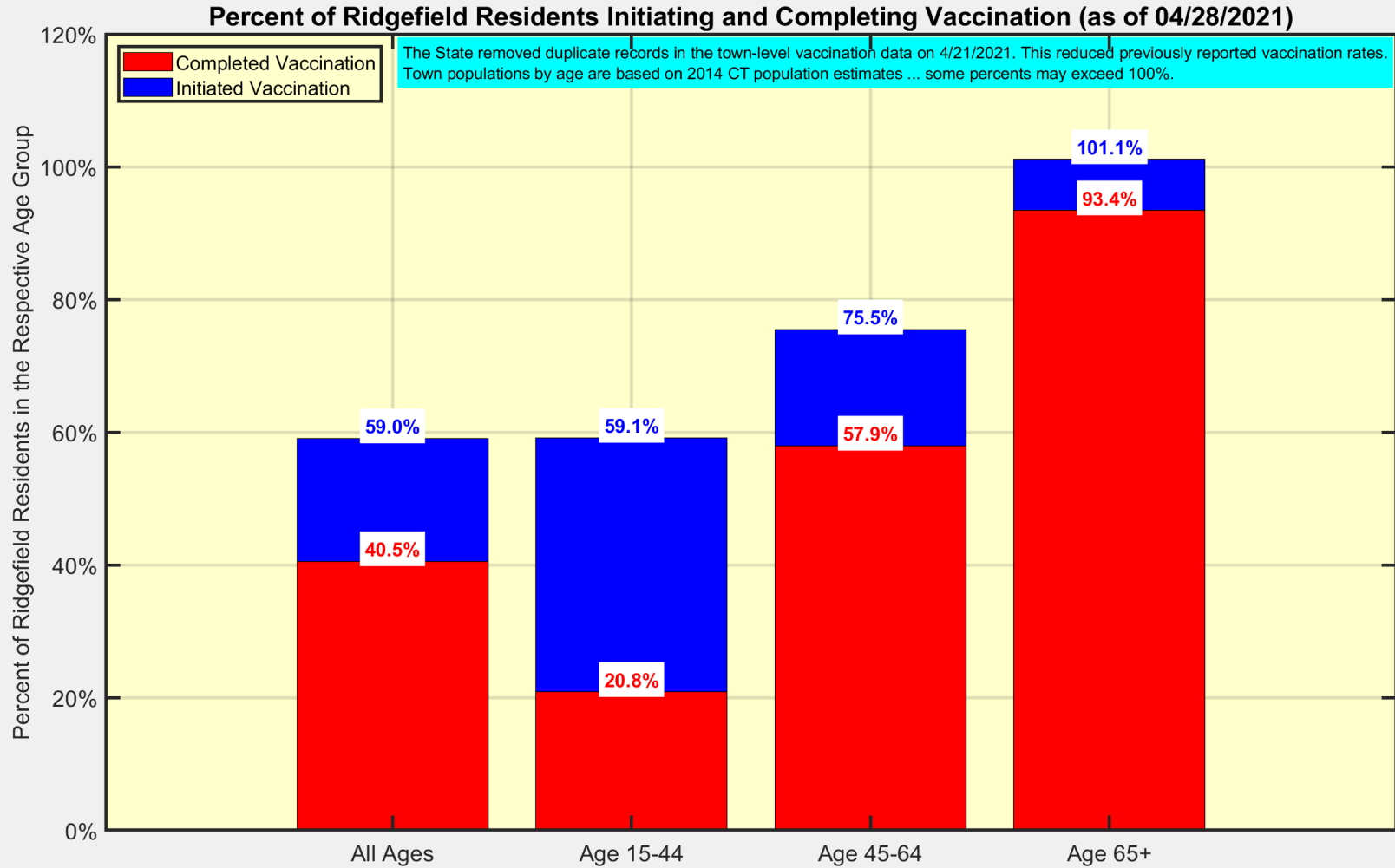
Data Source: <https://data.ct.gov>



Latest Vaccination Rates for Towns in Fairfield County



Latest Vaccination Rates for Ridgefield Residents

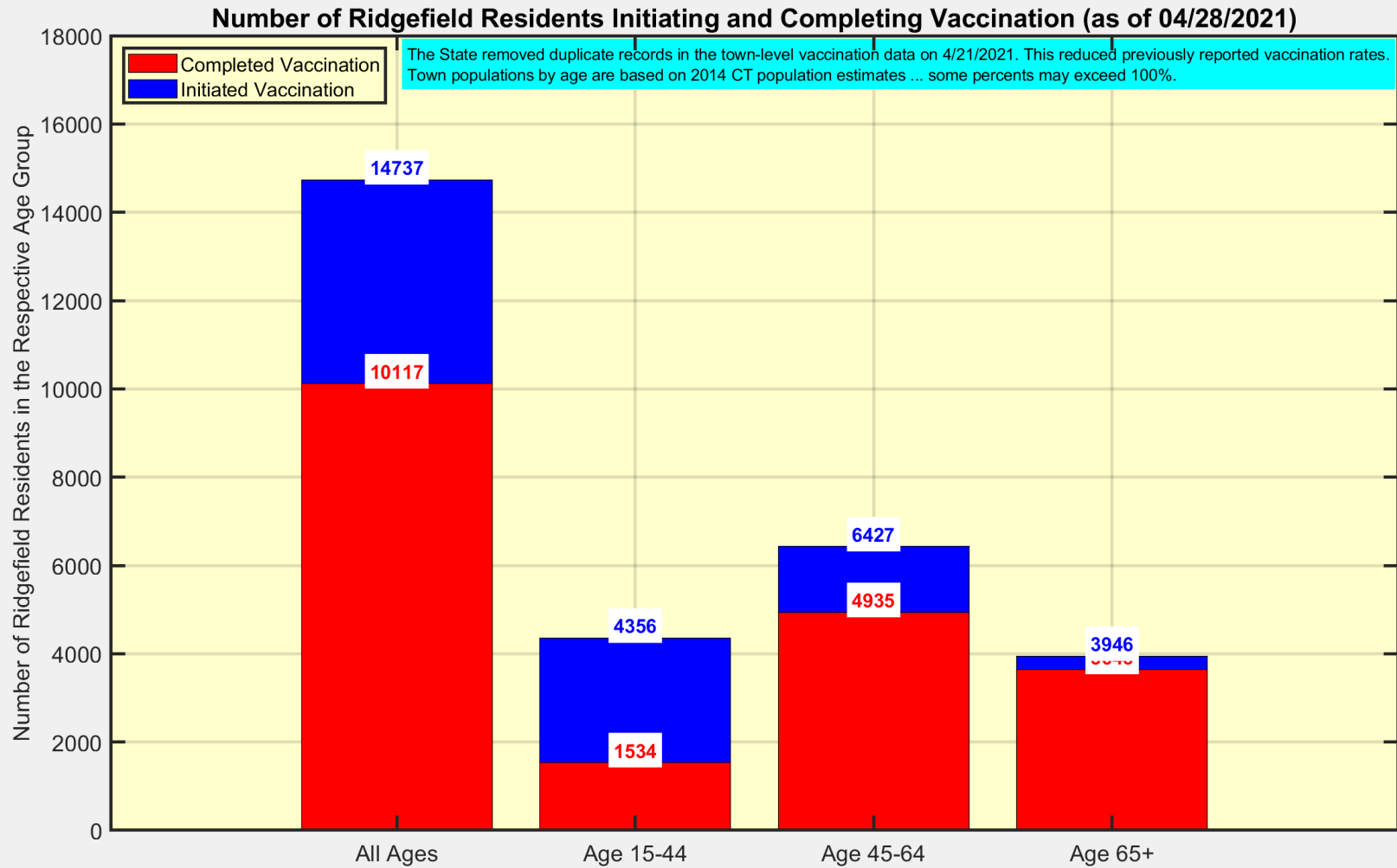


Data Source: <https://data.ct.gov>



Ridgefield COVID-19 Task Force

Latest Vaccination Numbers for Ridgefield Residents



Data Source: <https://data.ct.gov>



Ridgefield COVID-19 Task Force