

Ridgefield COVID Summary

Ridgefield COVID-19 Task Force



Data downloaded from
<https://data.ct.gov/browse?category=Health+and+Human+Services>

Data downloaded on Thursday, April 29, 2021 at 4:00 PM
This reflects data through Wednesday, April 28, 2021

Ridgefield Summary

Ridgefield	Wednesday 04/28/2021	Tuesday 04/27/2021
Number of New Cases Reported	3	0
New Case Rate (per 100,000 Residents)	12.6	13.2
New Test Rate (per 100,000 Residents)	599.8	630.7
Test Positivity	2.1%	2.1%
Fairfield County	Wednesday 04/28/2021	Tuesday 04/27/2021
Number of New Cases Reported	95	129
New Case Rate (per 100,000 Residents)	17.4	19.2
New Test Rate (per 100,000 Residents)	683.1	711.2
Test Positivity	2.6%	2.7%
Currently Hospitalized	127	131

Data Source: <https://data.ct.gov>. This report reflects data reported to the State through Wednesday 04/28/2021. The New Case Rate, New Test Rate, and Test Positivity are computed using 7-day moving averages.

Fairfield County ranks 606 (Highest 19.3%) out of 3142 US counties in New Case Rate (Per 100,000 Residents)

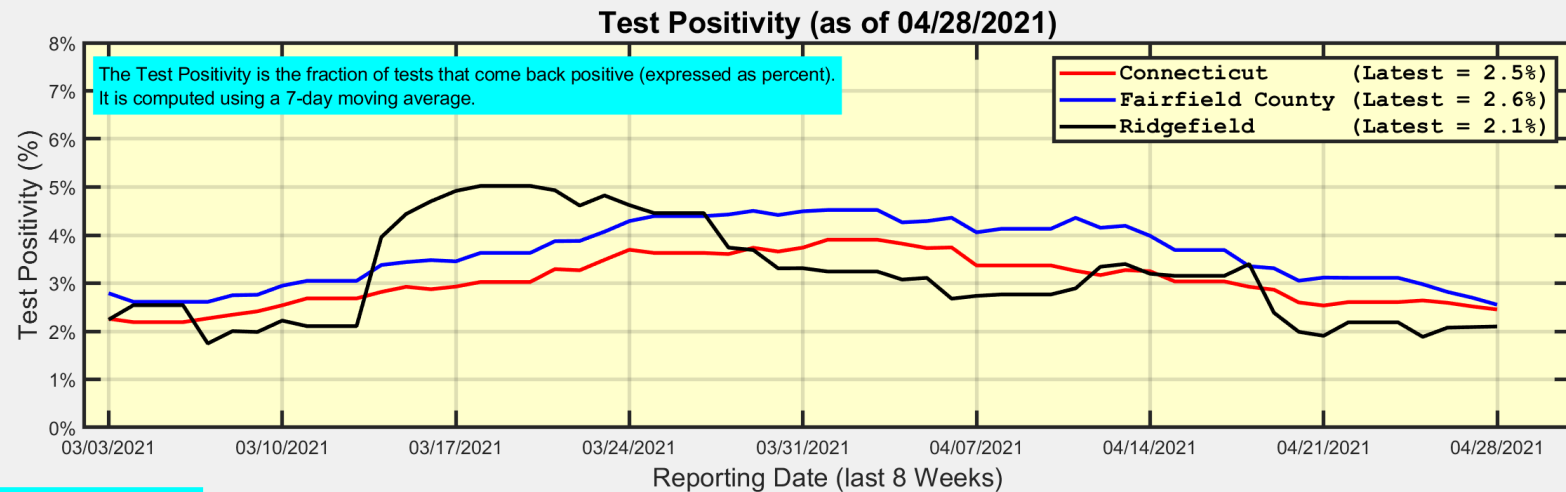
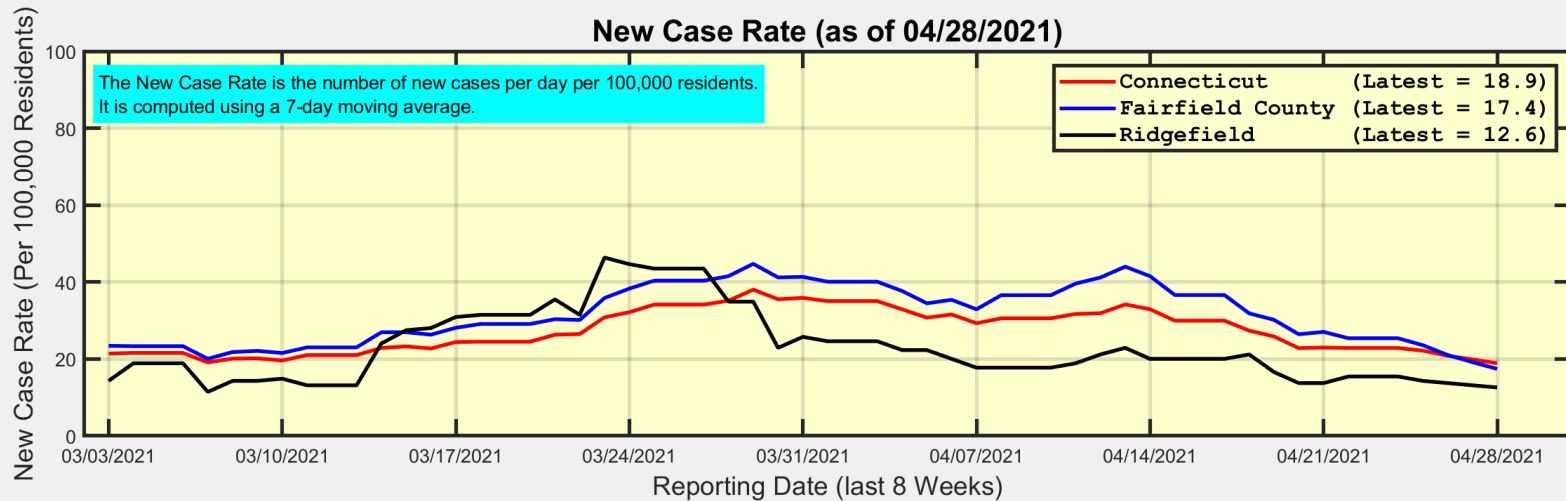
Our data science confirms CDC and other studies:

Wearing a Mask Reduces COVID Case Rates



Ridgefield COVID-19 Task Force

New Case Rates and Test Positivity for Connecticut, Fairfield County, and Ridgefield



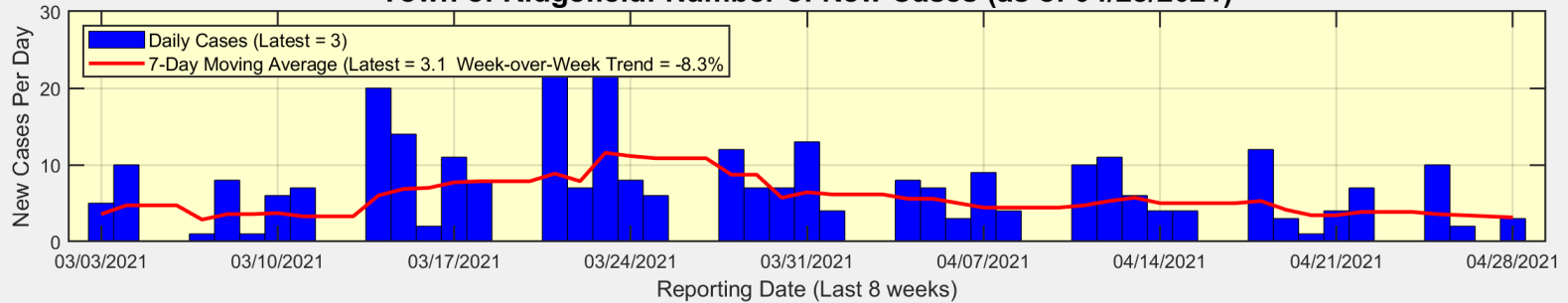
Data Source: <https://data.ct.gov>



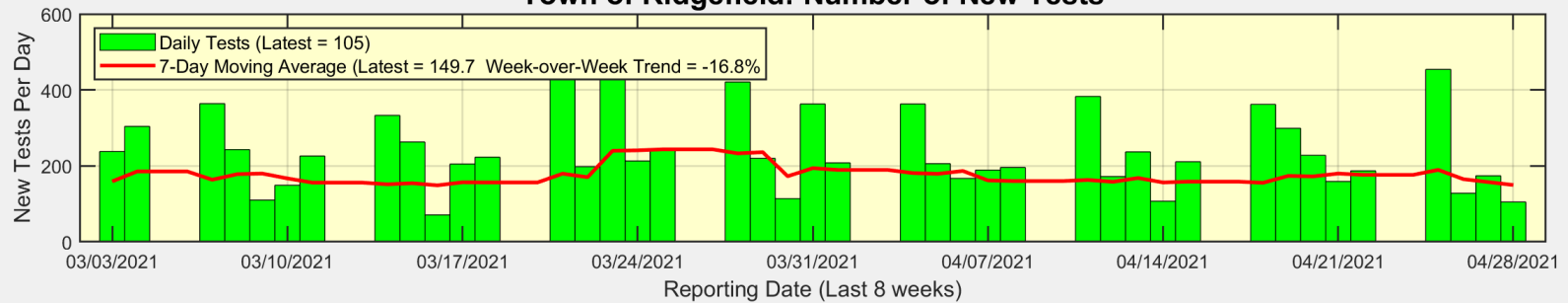
Ridgefield COVID-19 Task Force

New Cases, New Tests, and Test Positivity for Ridgefield

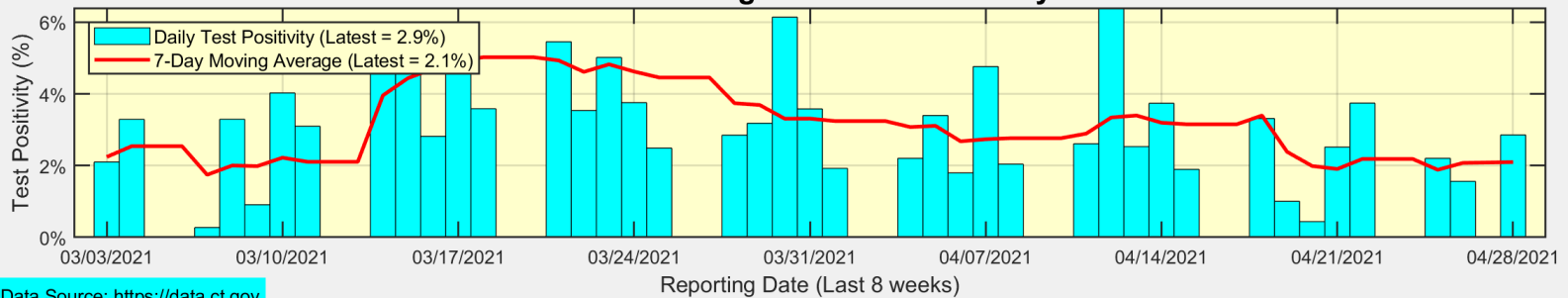
Town of Ridgefield: Number of New Cases (as of 04/28/2021)



Town of Ridgefield: Number of New Tests



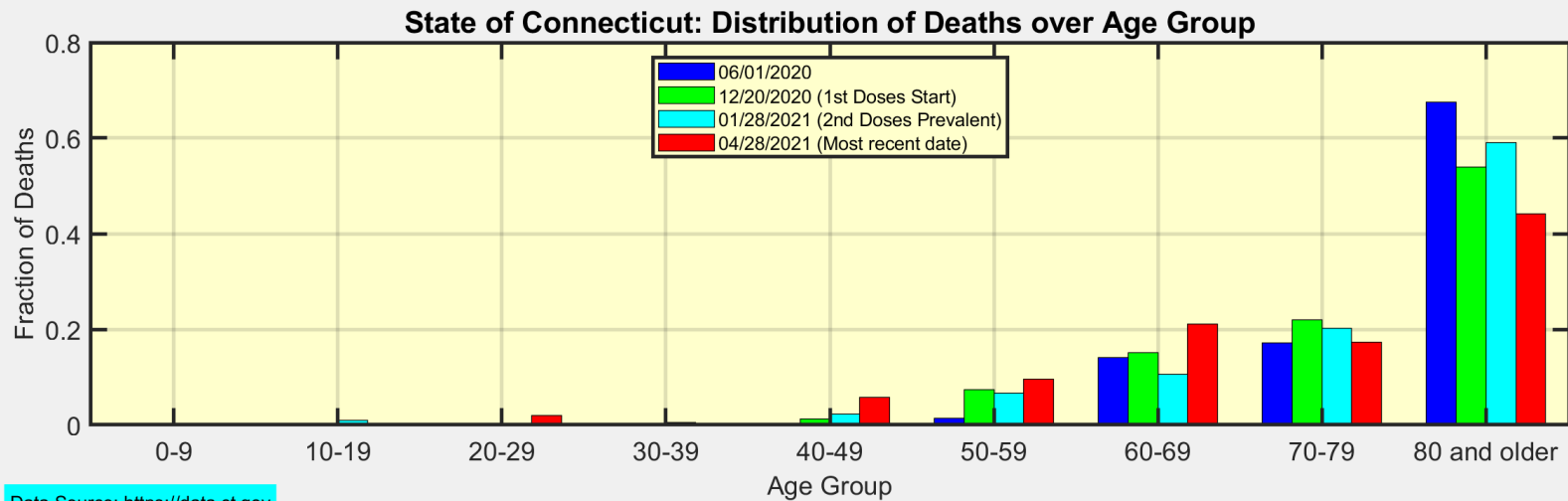
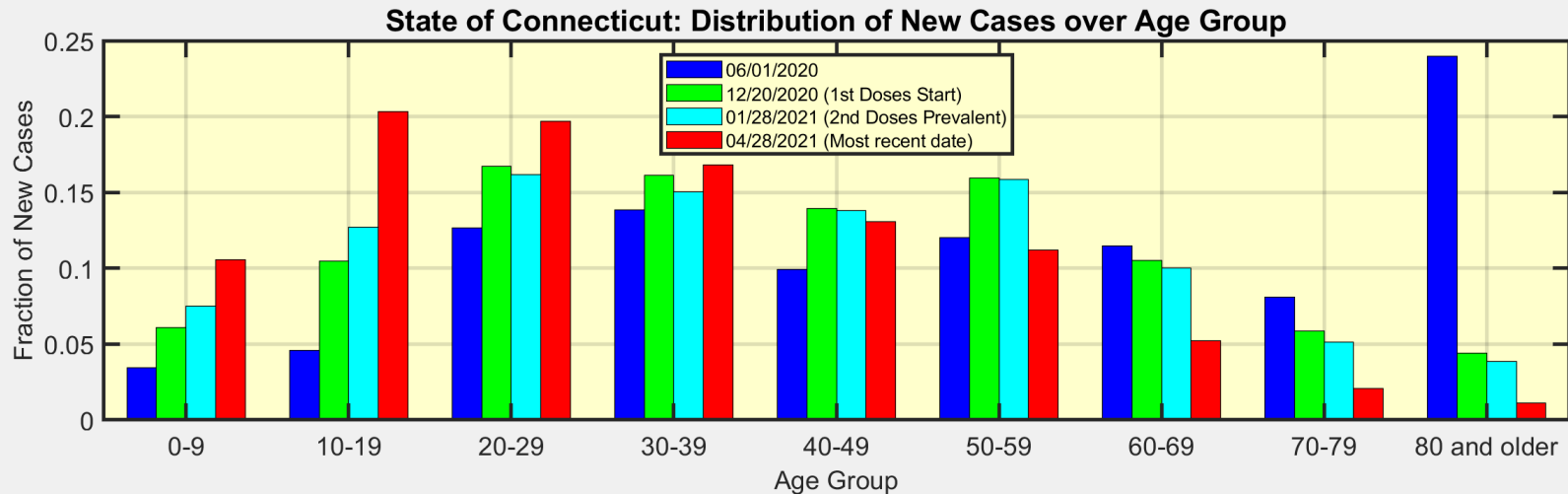
Town of Ridgefield: Test Positivity



Data Source: <https://data.ct.gov>



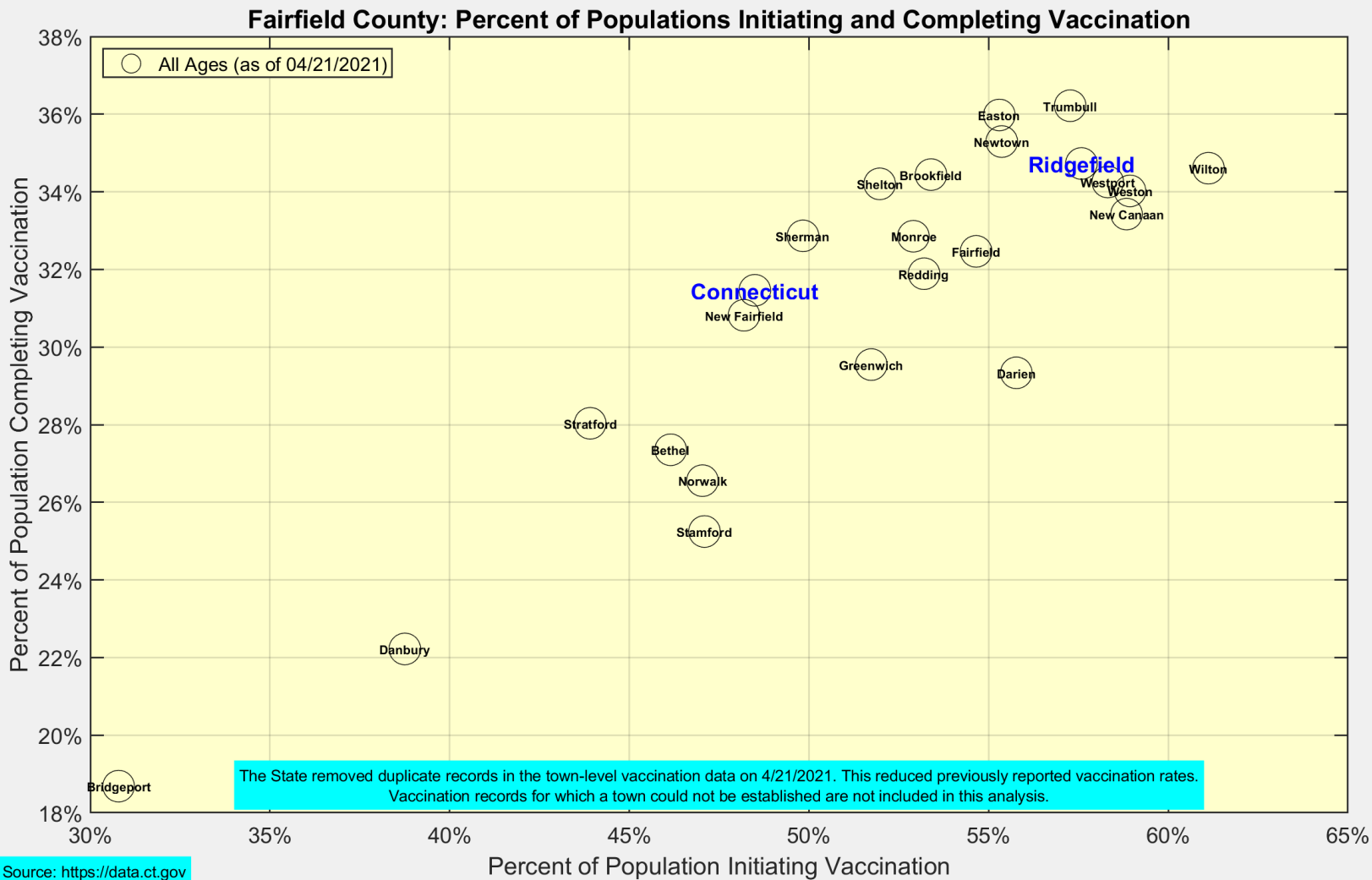
We are seeing more cases in ages 10-39 as ages 60+ become fully vaccinated



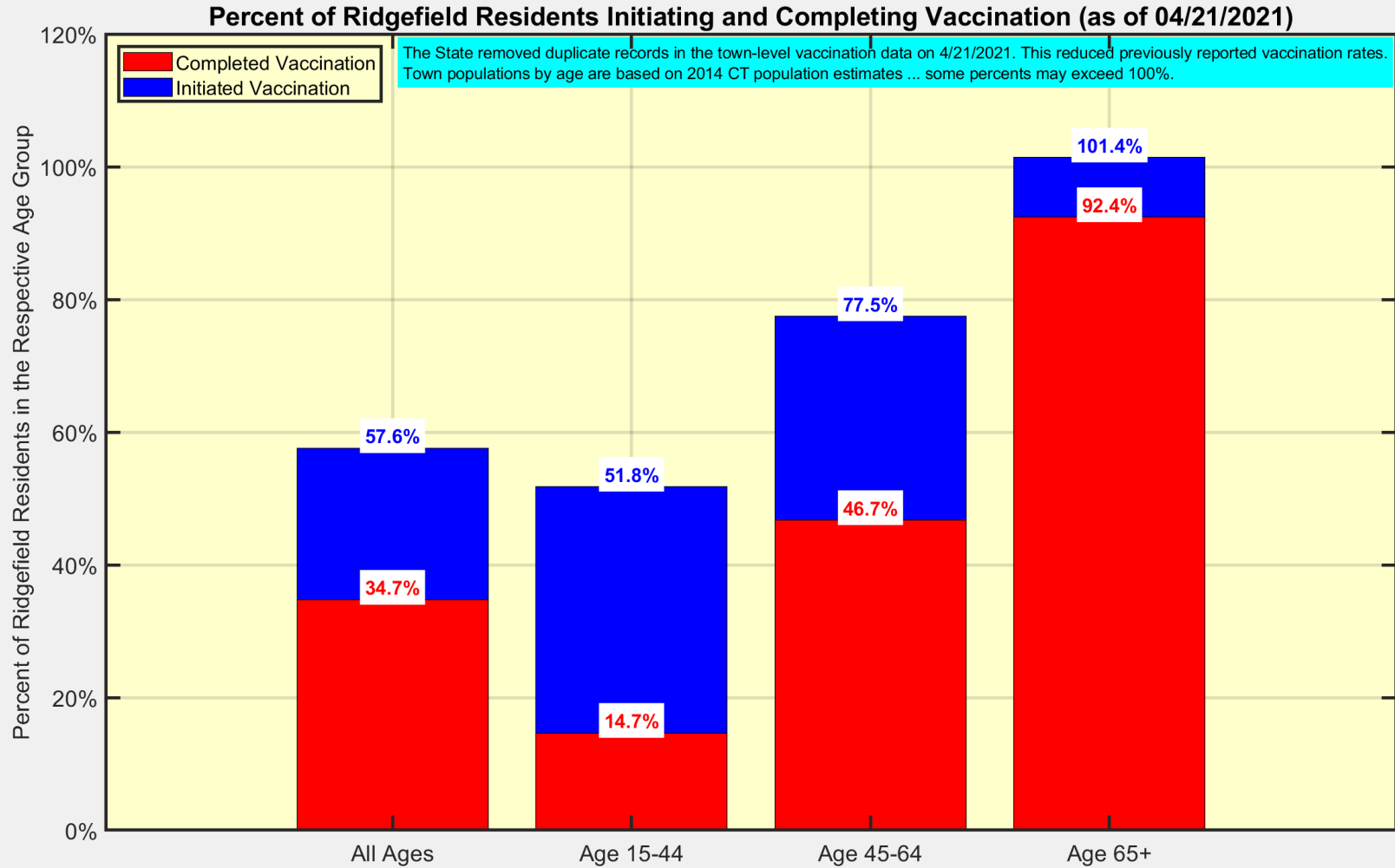
Data Source: <https://data.ct.gov>



Latest Vaccination Rates for Towns in Fairfield County



Latest Vaccination Rates for Ridgefield Residents



Data Source: <https://data.ct.gov>



Ridgefield COVID-19 Task Force