

Ridgefield COVID Summary

Ridgefield COVID-19 Task Force



Data downloaded from
<https://data.ct.gov/browse?category=Health+and+Human+Services>

Data downloaded on Wednesday, April 28, 2021 at 4:00 PM
This reflects data through Tuesday, April 27, 2021

Ridgefield Summary

Ridgefield	Tuesday 04/27/2021	Monday 04/26/2021
Number of New Cases Reported	0	2
New Case Rate (per 100,000 Residents)	13.2	13.7
New Test Rate (per 100,000 Residents)	630.7	661.7
Test Positivity	2.1%	2.1%
Fairfield County	Tuesday 04/27/2021	Monday 04/26/2021
Number of New Cases Reported	129	83
New Case Rate (per 100,000 Residents)	19.2	21.0
New Test Rate (per 100,000 Residents)	711.3	747.0
Test Positivity	2.7%	2.8%
Currently Hospitalized	131	136

Data Source: <https://data.ct.gov>. This report reflects data reported to the State through Tuesday 04/27/2021. The New Case Rate, New Test Rate, and Test Positivity are computed using 7-day moving averages.

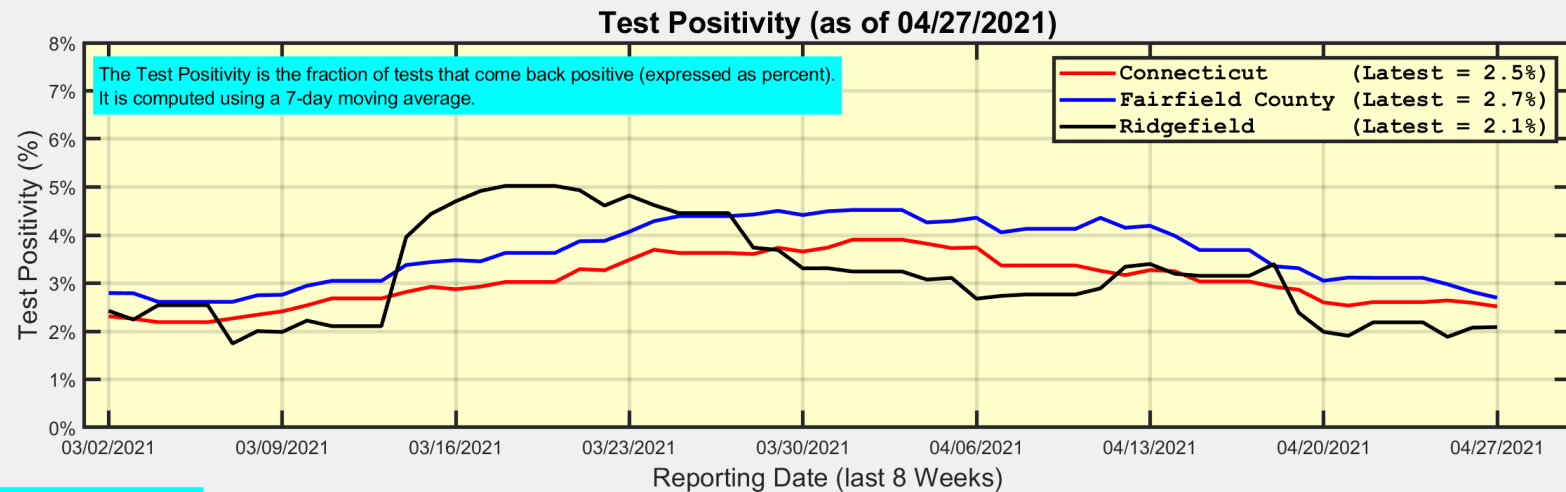
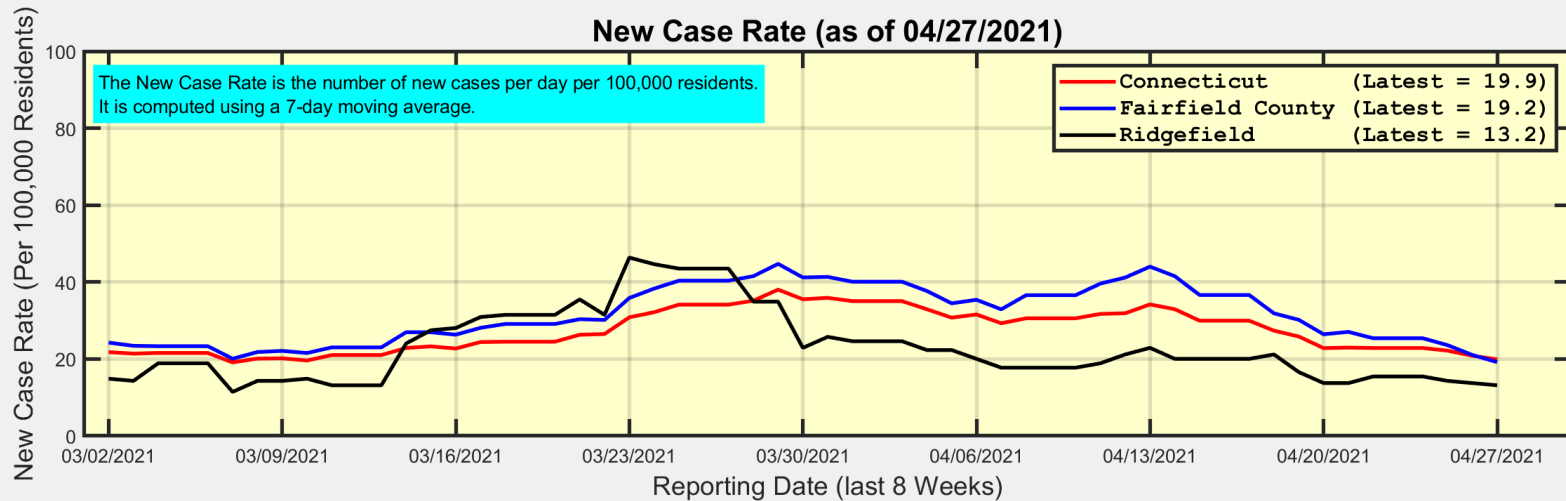
Fairfield County ranks 521 (Highest 16.6%) out of 3142 US counties in New Case Rate (Per 100,000 Residents)

Our data science confirms CDC and other studies:
Wearing a Mask Reduces COVID Case Rates



Ridgefield COVID-19 Task Force

New Case Rates and Test Positivity for Connecticut, Fairfield County, and Ridgefield



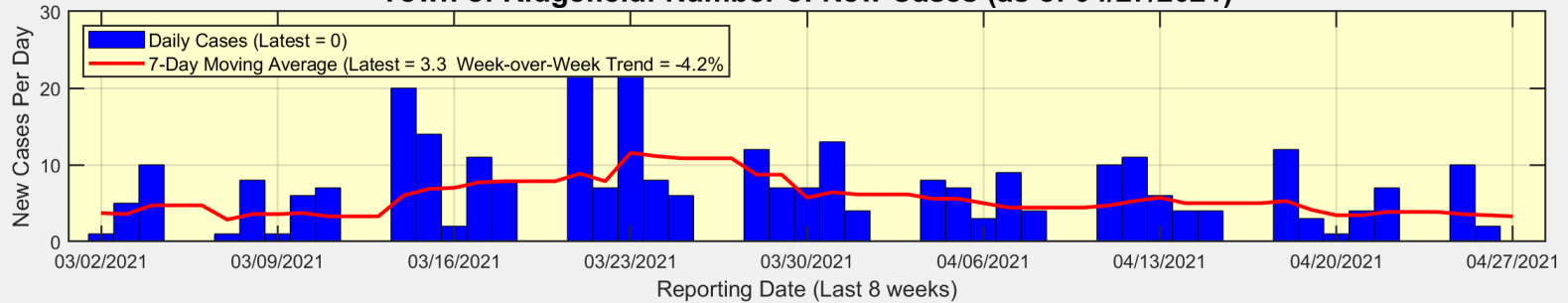
Data Source: <https://data.ct.gov>



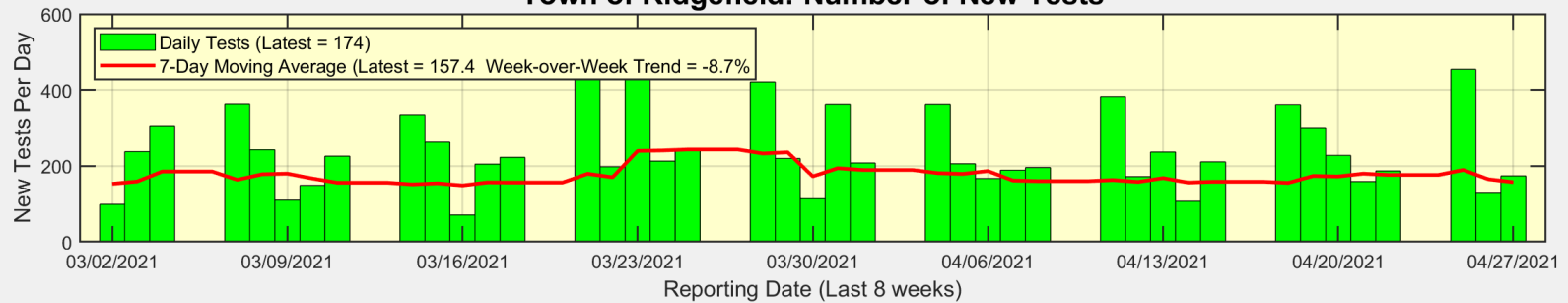
Ridgefield COVID-19 Task Force

New Cases, New Tests, and Test Positivity for Ridgefield

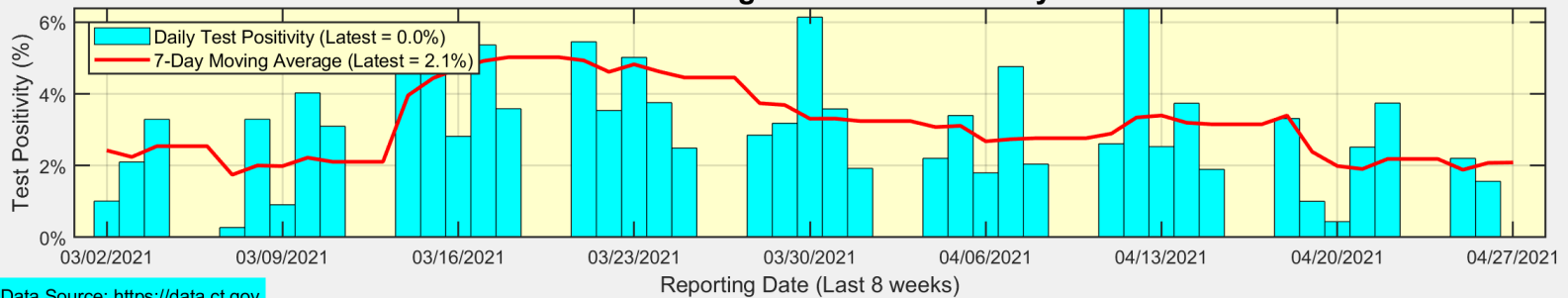
Town of Ridgefield: Number of New Cases (as of 04/27/2021)



Town of Ridgefield: Number of New Tests



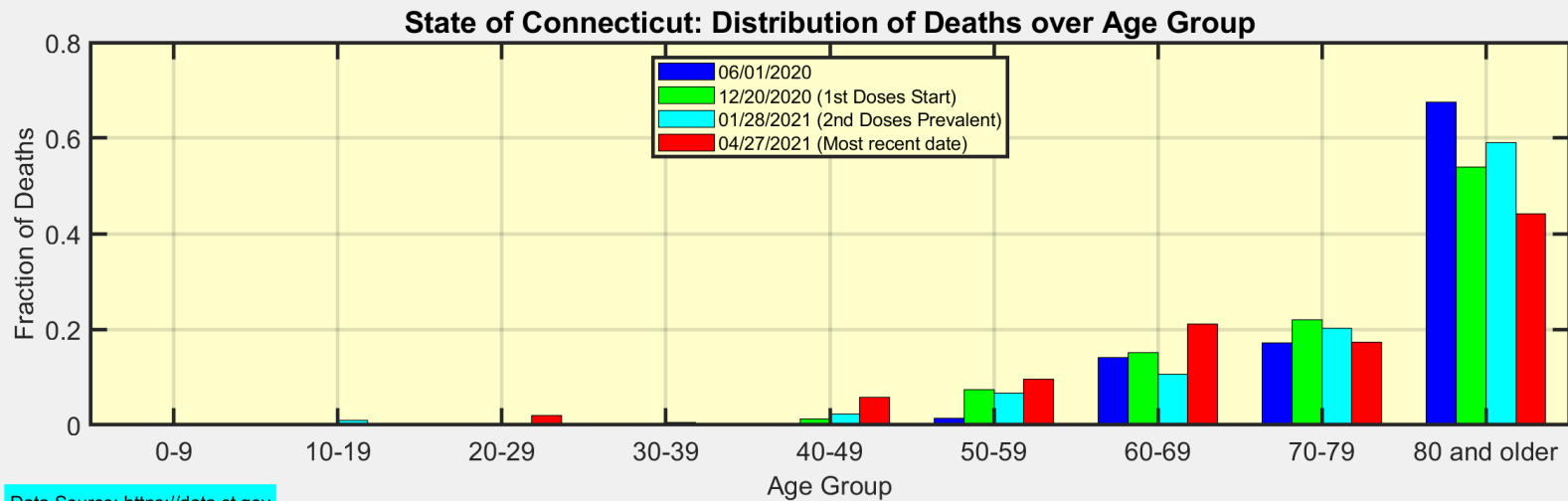
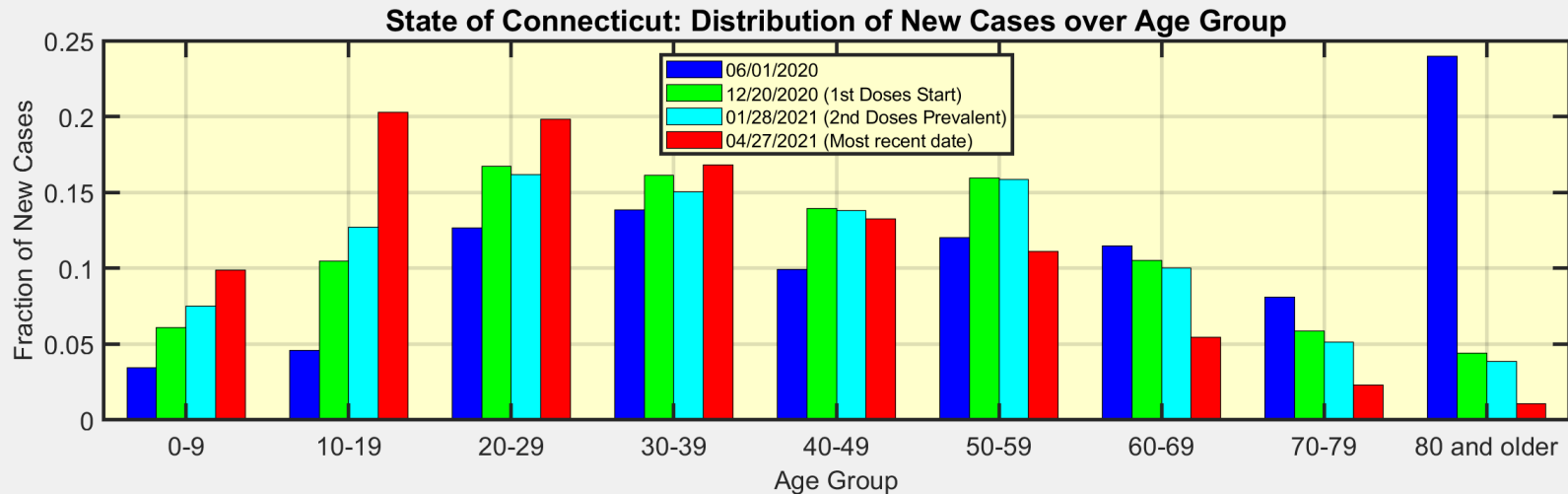
Town of Ridgefield: Test Positivity



Data Source: <https://data.ct.gov>



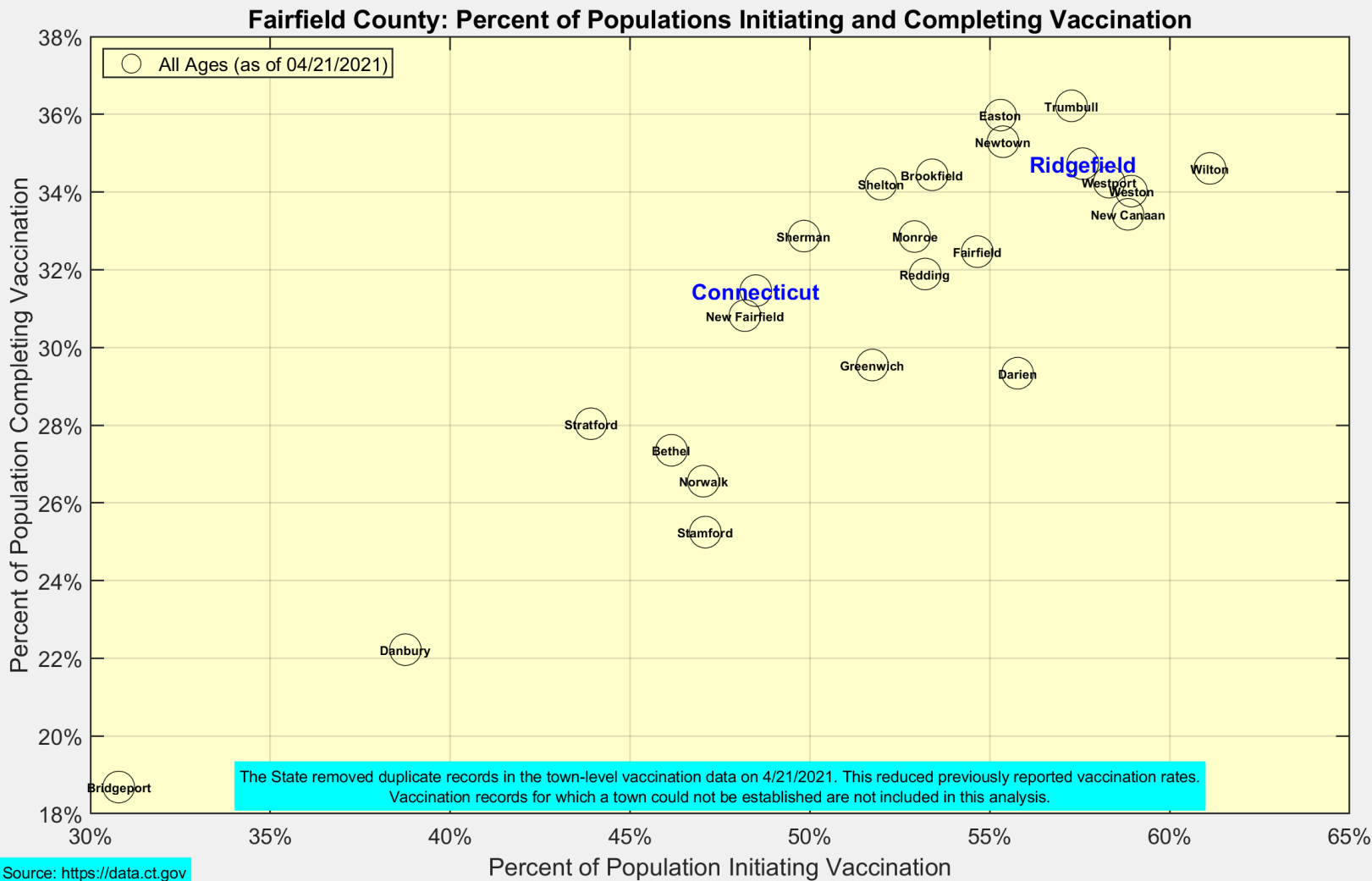
We are seeing more cases in ages 10-39 as ages 60+ become fully vaccinated



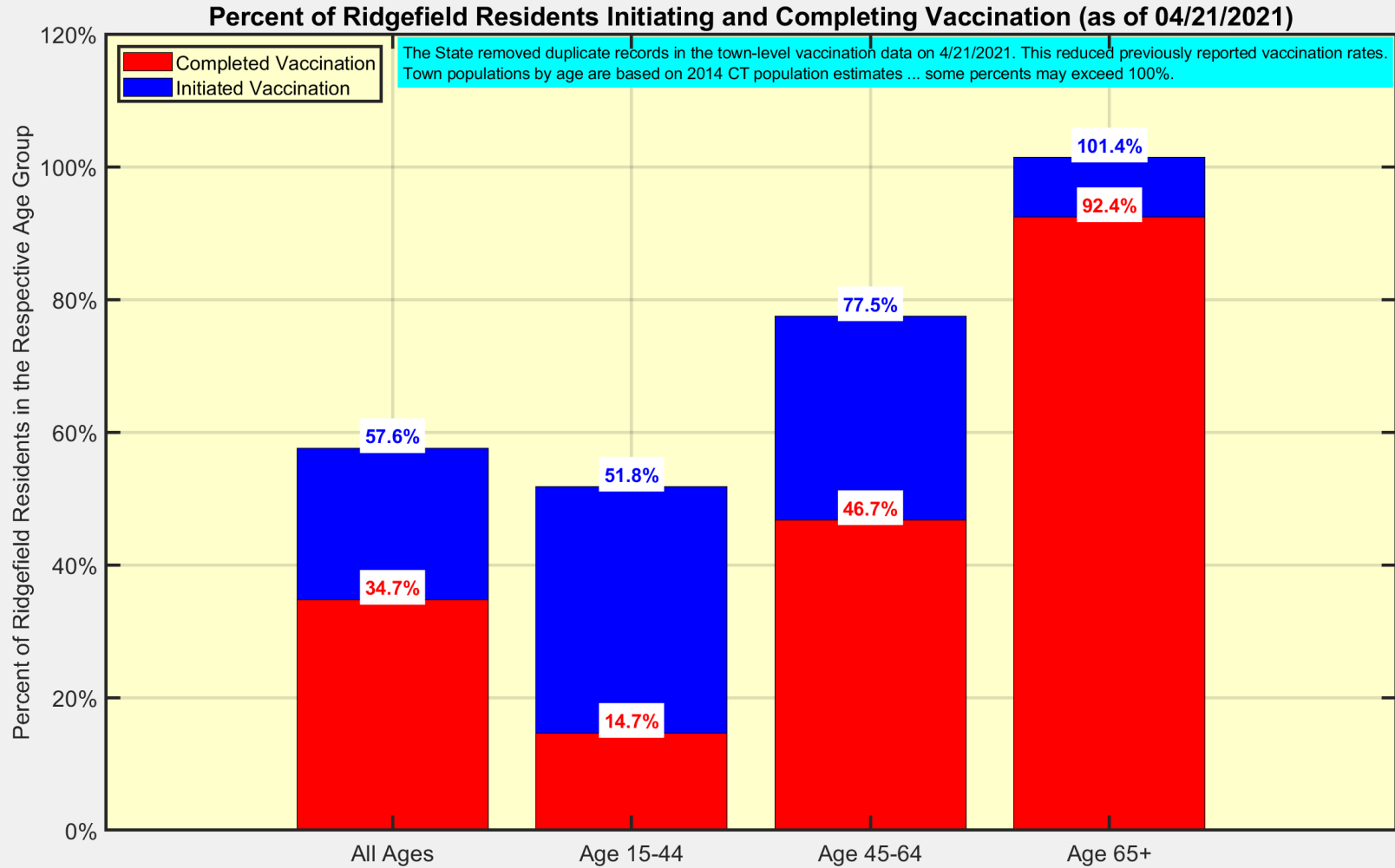
Data Source: <https://data.ct.gov>



Latest Vaccination Rates for Towns in Fairfield County



Latest Vaccination Rates for Ridgefield Residents



Data Source: <https://data.ct.gov>



Ridgefield COVID-19 Task Force