

Ridgefield COVID Summary

Ridgefield COVID-19 Task Force



Data downloaded from
<https://data.ct.gov/browse?category=Health+and+Human+Services>

Data downloaded on Tuesday, April 27, 2021 at 4:00 PM
This reflects data through Monday, April 26, 2021

Ridgefield Summary

Ridgefield	Monday 04/26/2021	Sunday 04/25/2021
Number of New Cases Reported	2	10
New Case Rate (per 100,000 Residents)	13.7	14.3
New Test Rate (per 100,000 Residents)	661.7	759.5
Test Positivity	2.1%	1.9%
Fairfield County	Monday 04/26/2021	Sunday 04/25/2021
Number of New Cases Reported	83	592
New Case Rate (per 100,000 Residents)	21.0	23.6
New Test Rate (per 100,000 Residents)	747.0	792.2
Test Positivity	2.8%	3.0%
Currently Hospitalized	136	133

Data Source: <https://data.ct.gov>. This report reflects data reported to the State through Monday 04/26/2021. The New Case Rate, New Test Rate, and Test Positivity are computed using 7-day moving averages.

NOTE: The Number of New Cases Reported for Sunday is the TOTAL over the last THREE DAYS (Friday, Saturday, Sunday).

Fairfield County ranks 437 (Highest 13.9%) out of 3142 US counties in New Case Rate (Per 100,000 Residents)

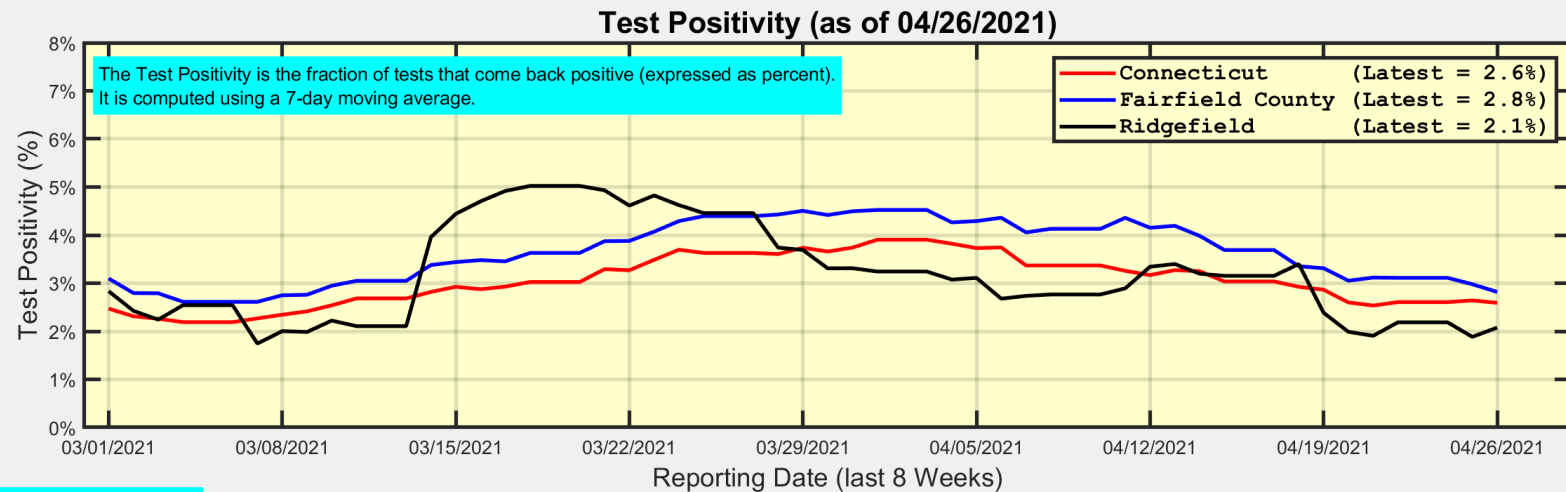
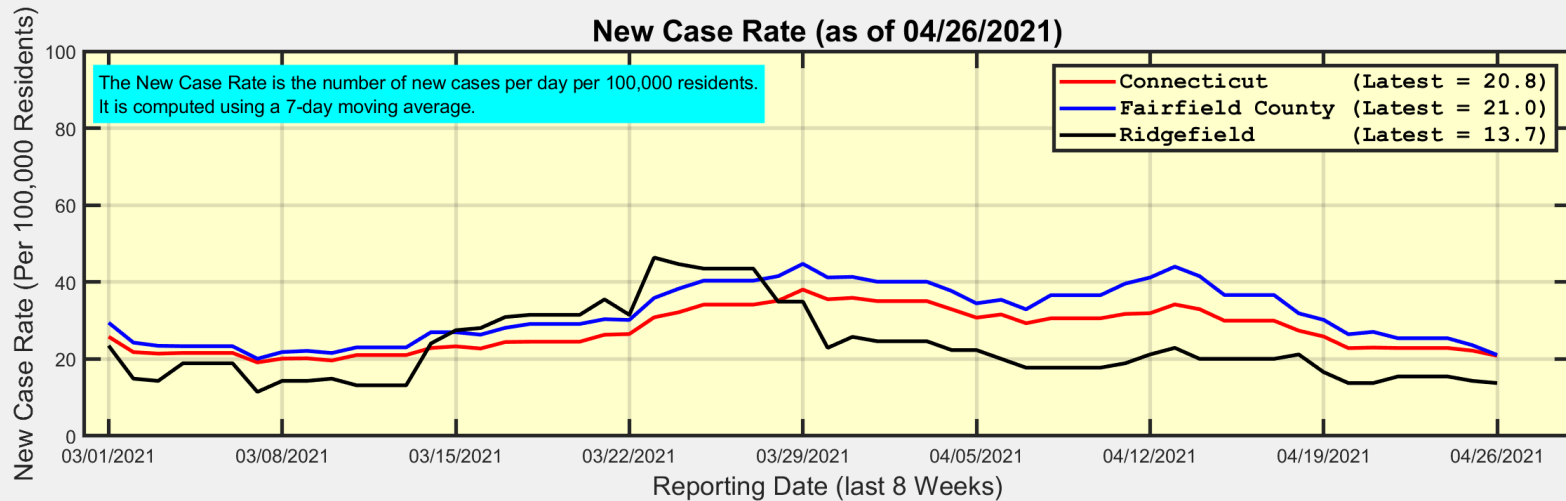
Our data science confirms CDC and other studies:

Wearing a Mask Reduces COVID Case Rates



Ridgefield COVID-19 Task Force

New Case Rates and Test Positivity for Connecticut, Fairfield County, and Ridgefield



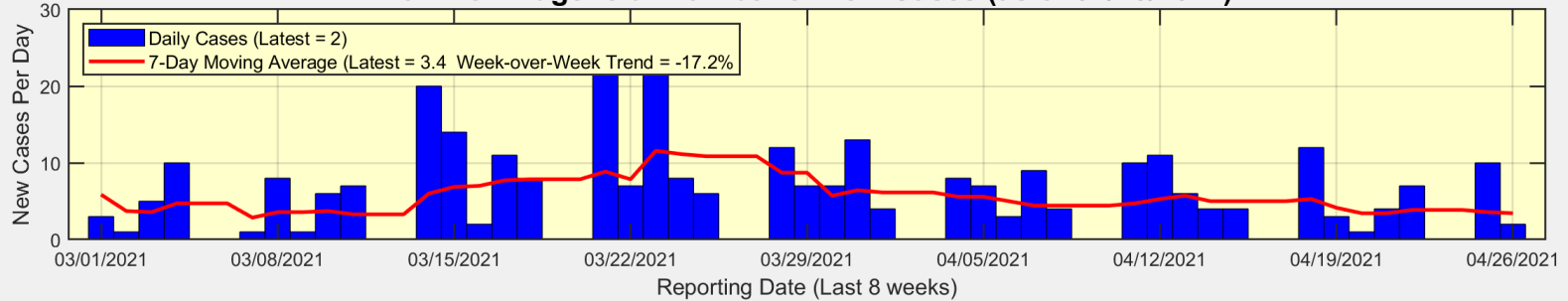
Data Source: <https://data.ct.gov>



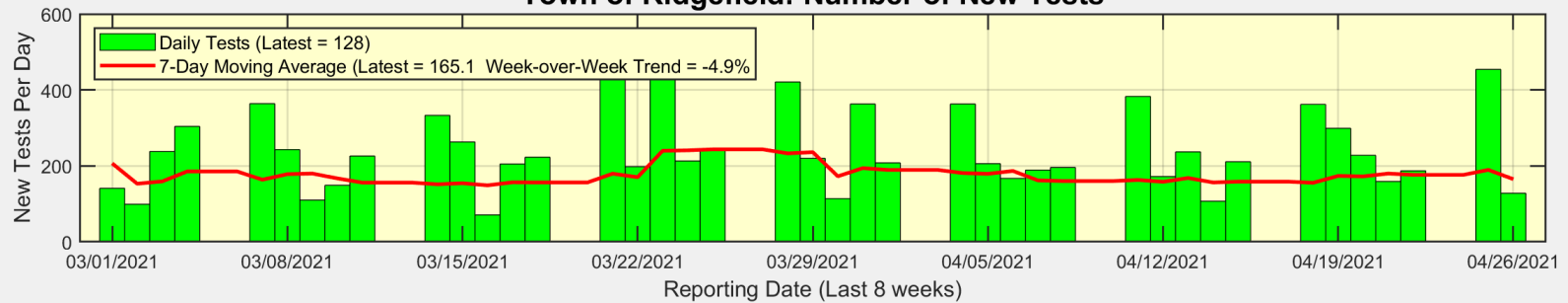
Ridgefield COVID-19 Task Force

New Cases, New Tests, and Test Positivity for Ridgefield

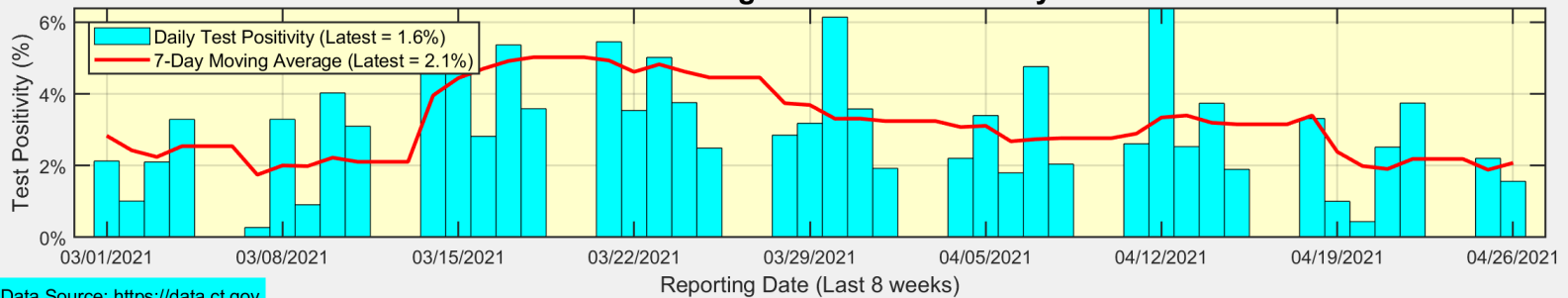
Town of Ridgefield: Number of New Cases (as of 04/26/2021)



Town of Ridgefield: Number of New Tests



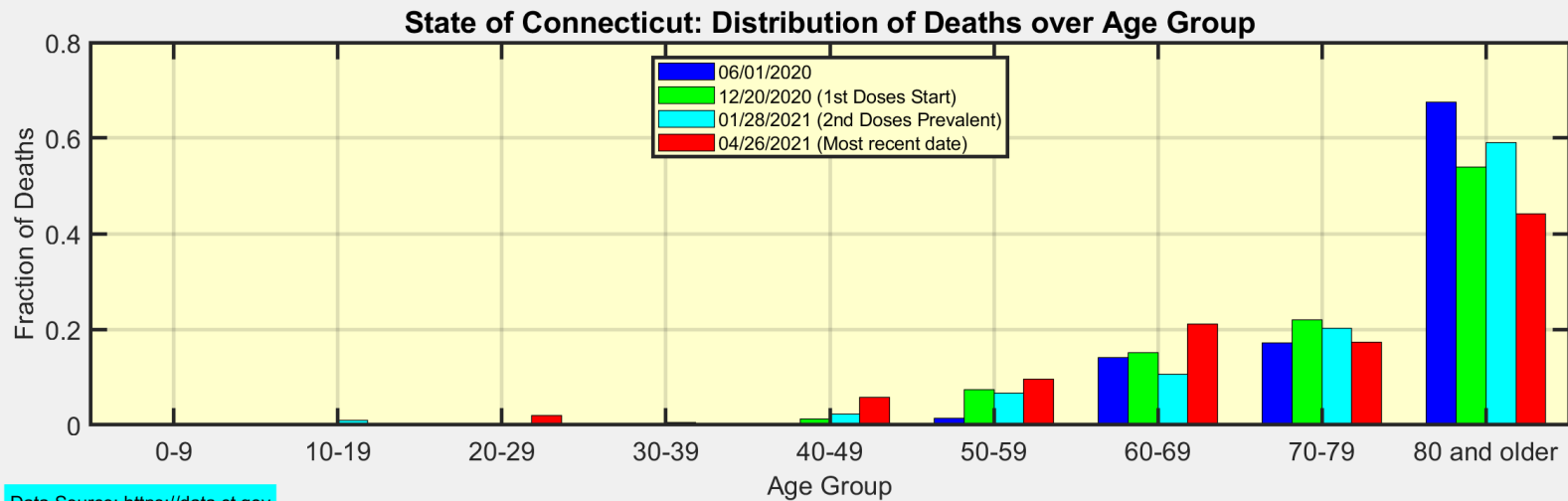
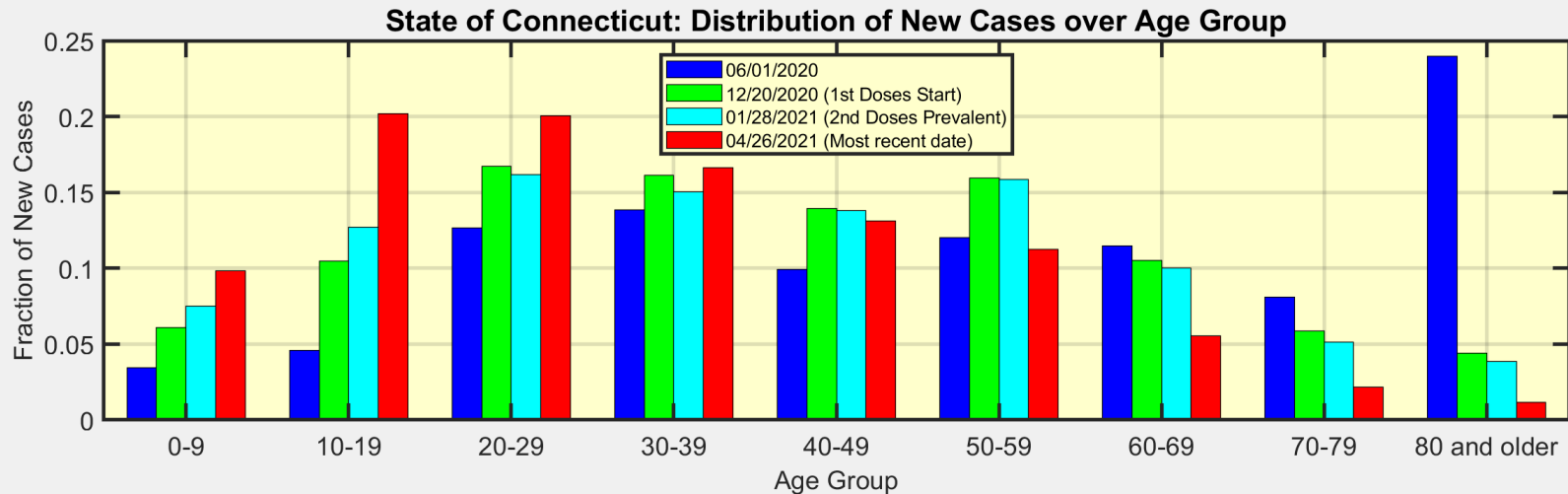
Town of Ridgefield: Test Positivity



Data Source: <https://data.ct.gov>



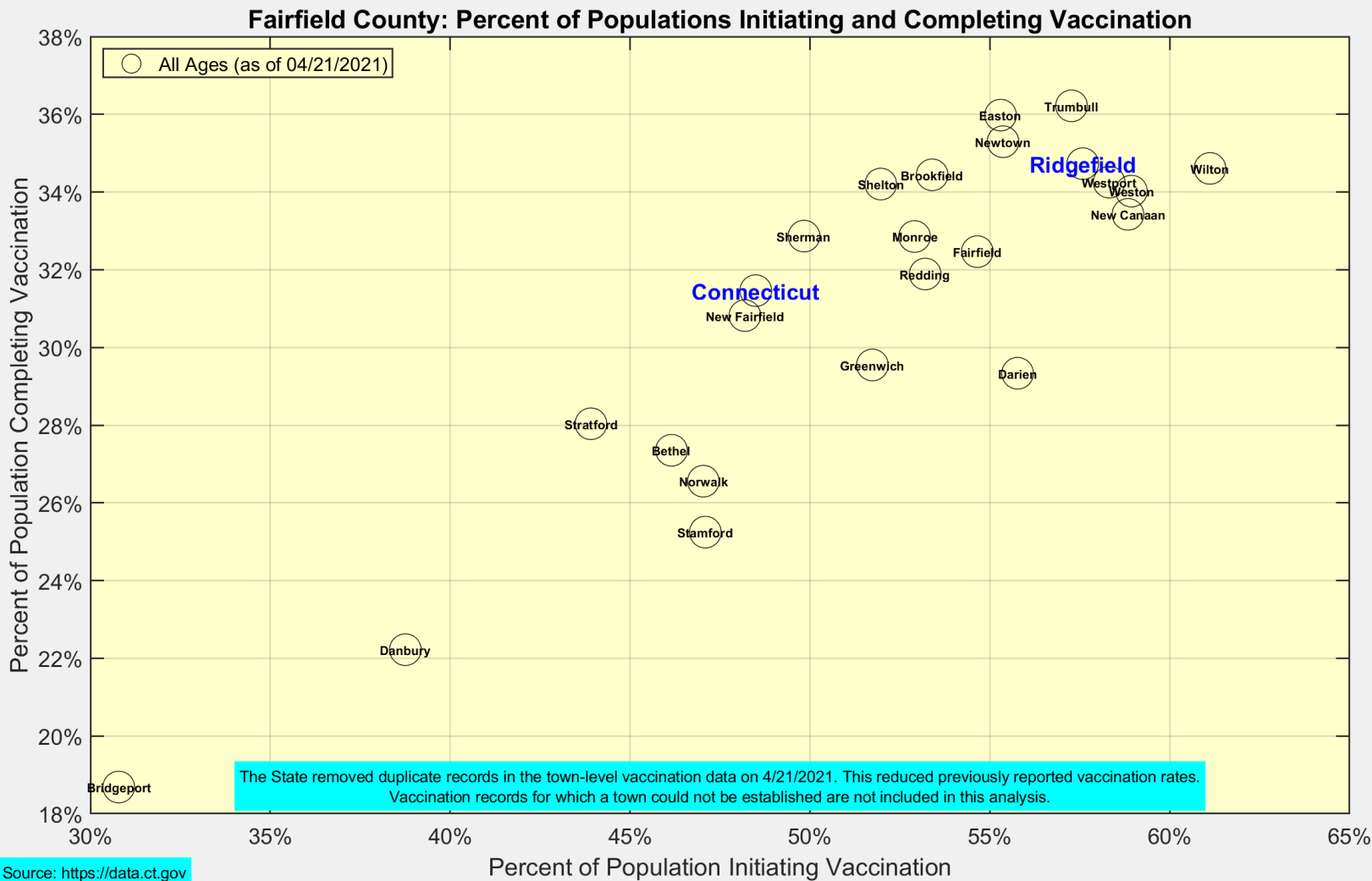
We are seeing more cases in ages 10-39 as ages 60+ become fully vaccinated



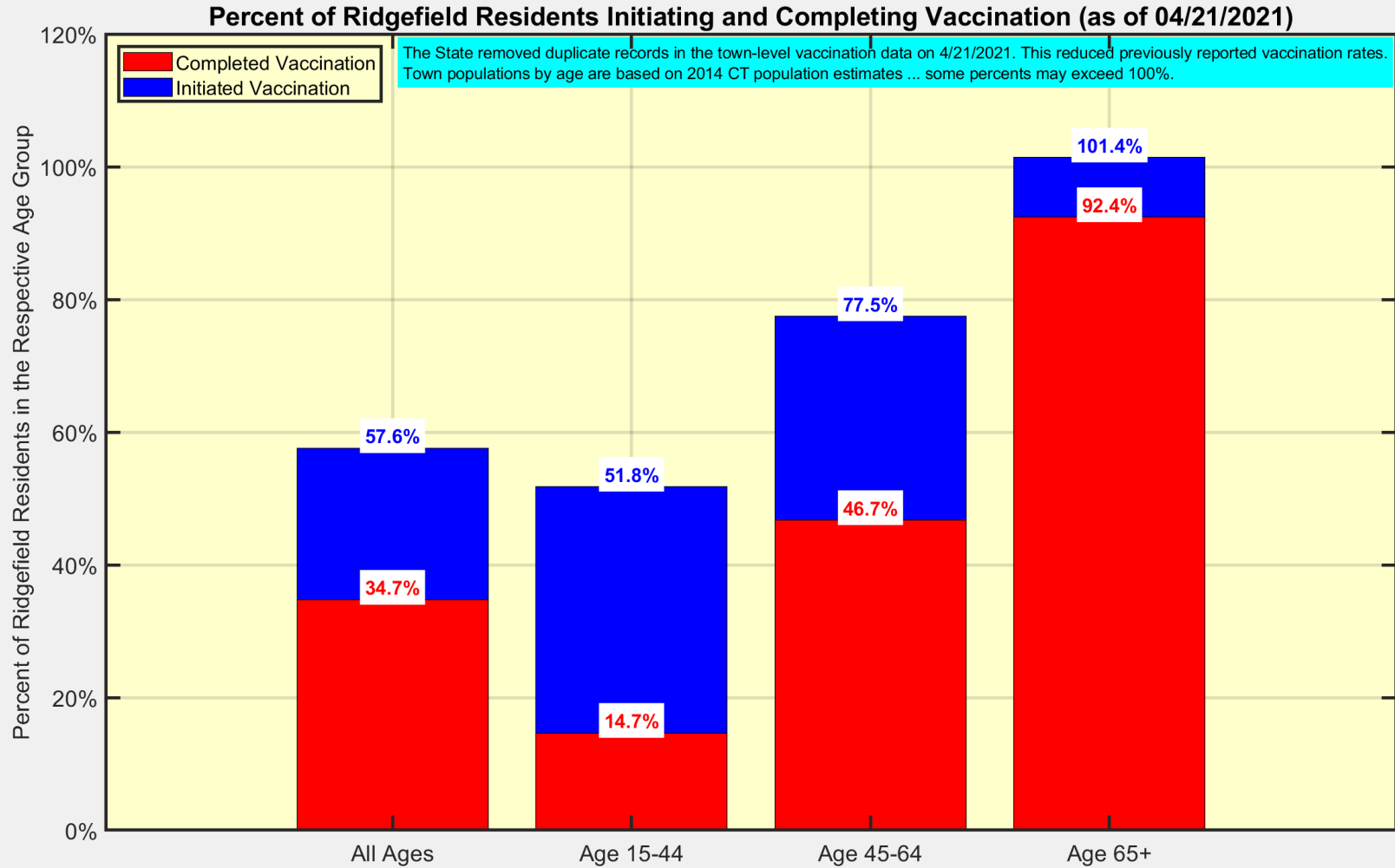
Data Source: <https://data.ct.gov>



Latest Vaccination Rates for Towns in Fairfield County



Latest Vaccination Rates for Ridgefield Residents



Data Source: <https://data.ct.gov>



Ridgefield COVID-19 Task Force