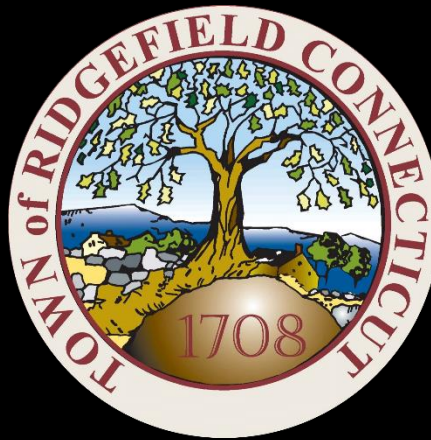


## Ridgefield COVID Summary

Ridgefield COVID-19 Task Force



Data downloaded from  
<https://data.ct.gov/browse?category=Health+and+Human+Services>

Data downloaded on Monday, April 26, 2021 at 4:00 PM  
This reflects data through Sunday, April 25, 2021

## Ridgefield Summary

Ridgefield	Sunday 04/25/2021	Thursday 04/22/2021
Number of New Cases Reported	10	7
New Case Rate (per 100,000 Residents)	14.3	15.5
New Test Rate (per 100,000 Residents)	759.5	706.9
Test Positivity	1.9%	2.2%
Fairfield County	Sunday 04/25/2021	Thursday 04/22/2021
Number of New Cases Reported	592	252
New Case Rate (per 100,000 Residents)	23.6	25.4
New Test Rate (per 100,000 Residents)	792.3	816.2
Test Positivity	3.0%	3.1%
Currently Hospitalized	133	153

**Data Source:** <https://data.ct.gov>. This report reflects data reported to the State through Sunday 04/25/2021.

The New Case Rate, New Test Rate, and Test Positivity are computed using 7-day moving averages.

**NOTE: The Number of New Cases Reported for Sunday is the TOTAL over the last THREE DAYS (Friday, Saturday, Sunday).**

Fairfield County ranks 405 (Highest 12.9%) out of 3142 US counties in New Case Rate (Per 100,000 Residents)

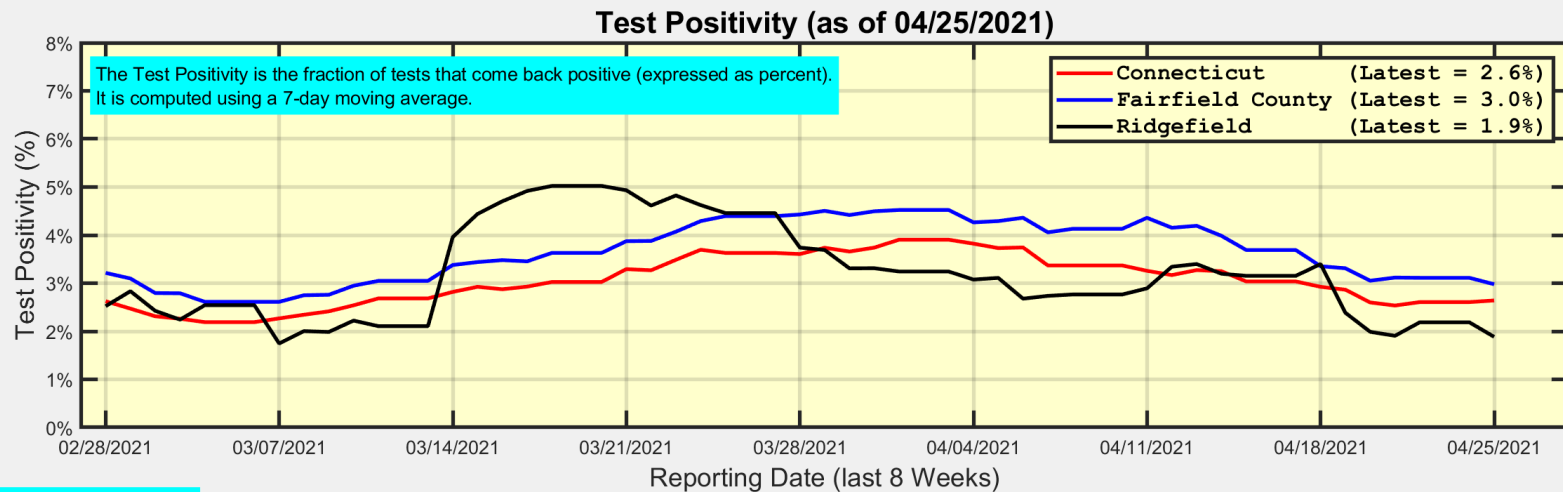
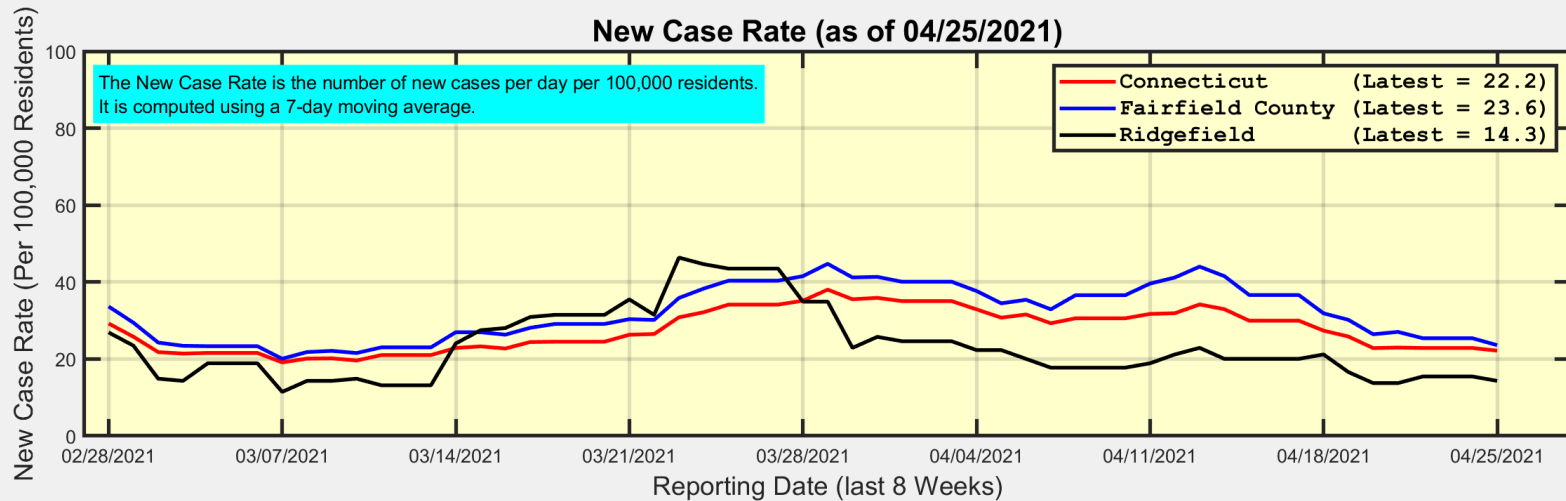
Our data science confirms CDC and other studies:

***Wearing a Mask Reduces COVID Case Rates***



Ridgefield COVID-19 Task Force

# New Case Rates and Test Positivity for Connecticut, Fairfield County, and Ridgefield



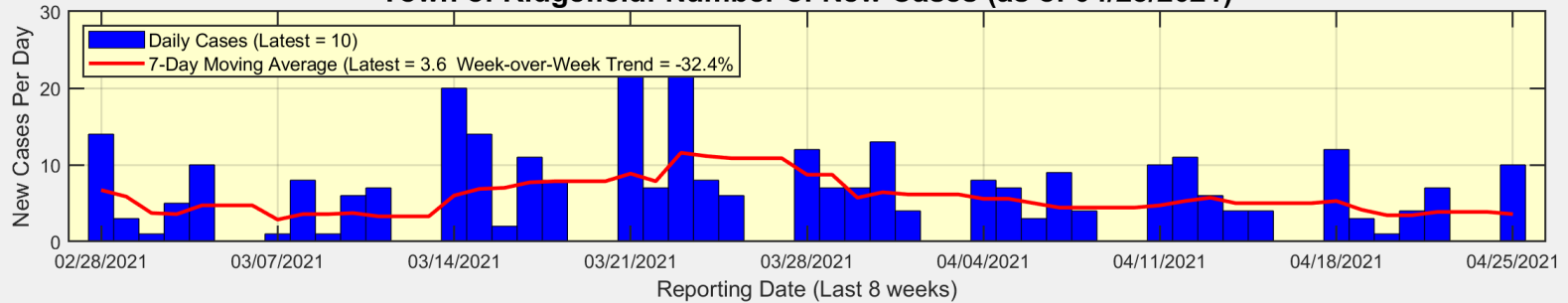
Data Source: <https://data.ct.gov>



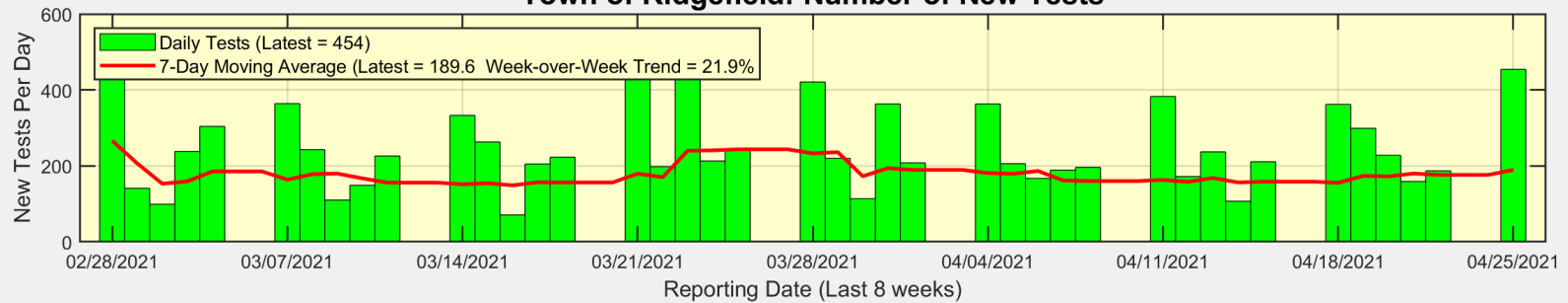
Ridgefield COVID-19 Task Force

# New Cases, New Tests, and Test Positivity for Ridgefield

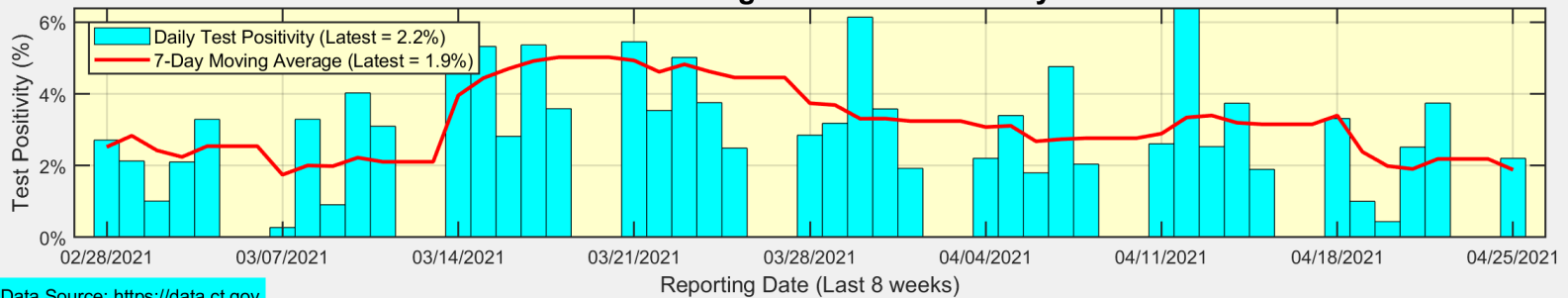
## Town of Ridgefield: Number of New Cases (as of 04/25/2021)



## Town of Ridgefield: Number of New Tests



## Town of Ridgefield: Test Positivity

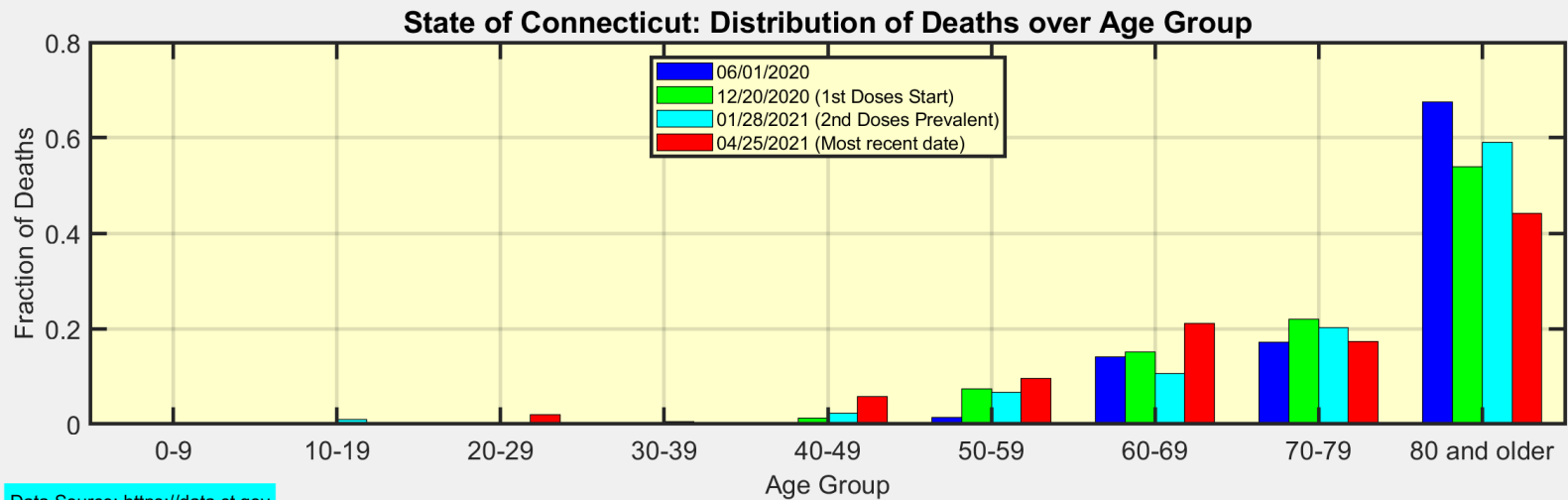
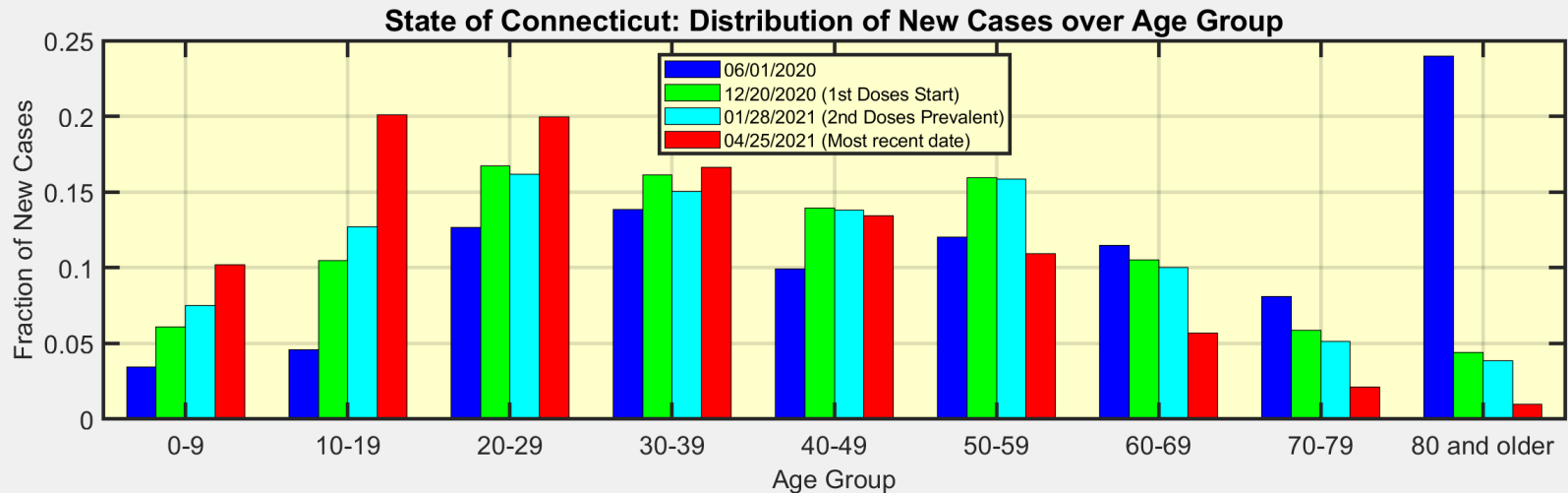


Data Source: <https://data.ct.gov>



Ridgefield COVID-19 Task Force

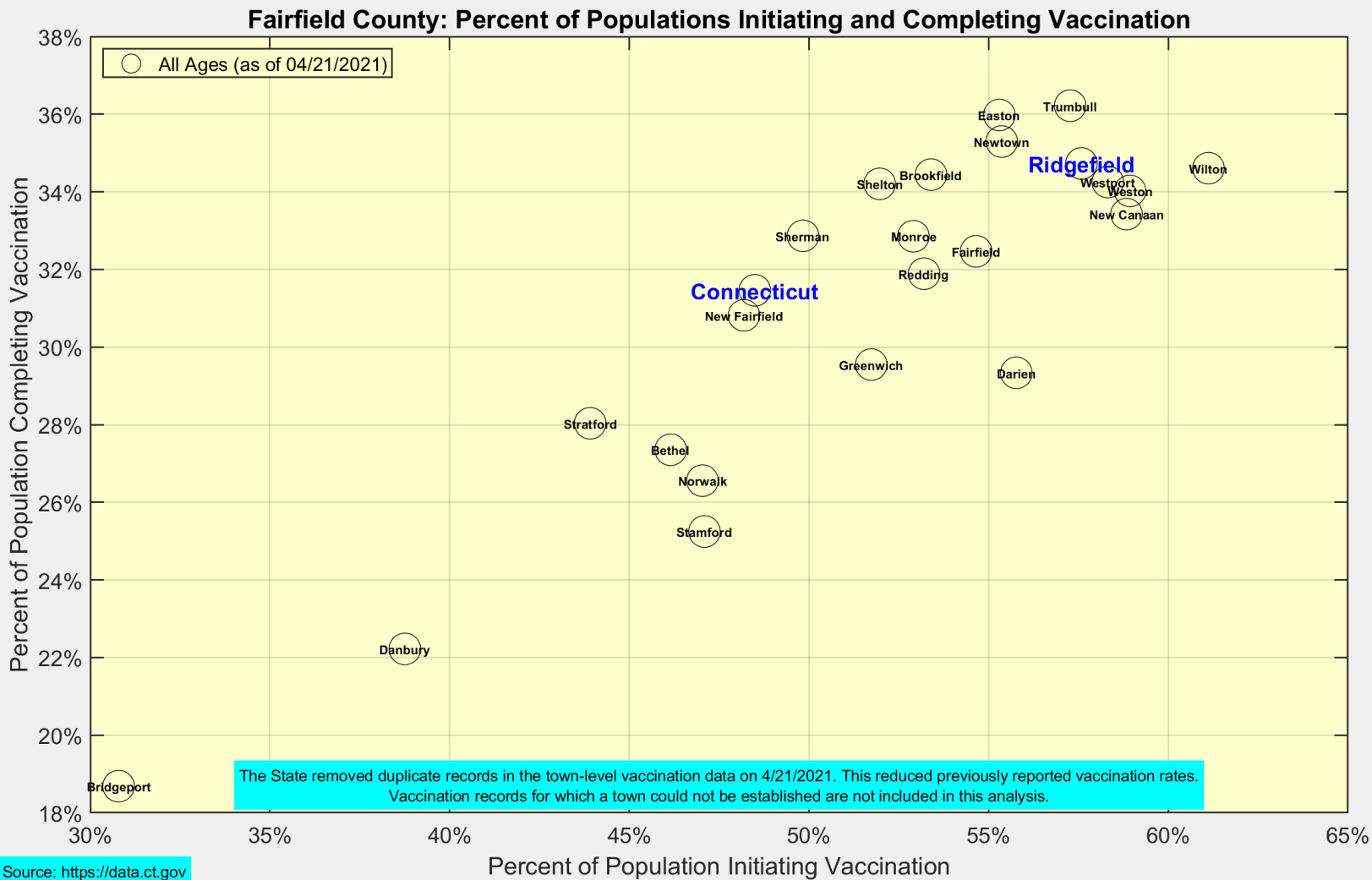
# We are seeing more cases in ages 10-39 as ages 60+ become fully vaccinated



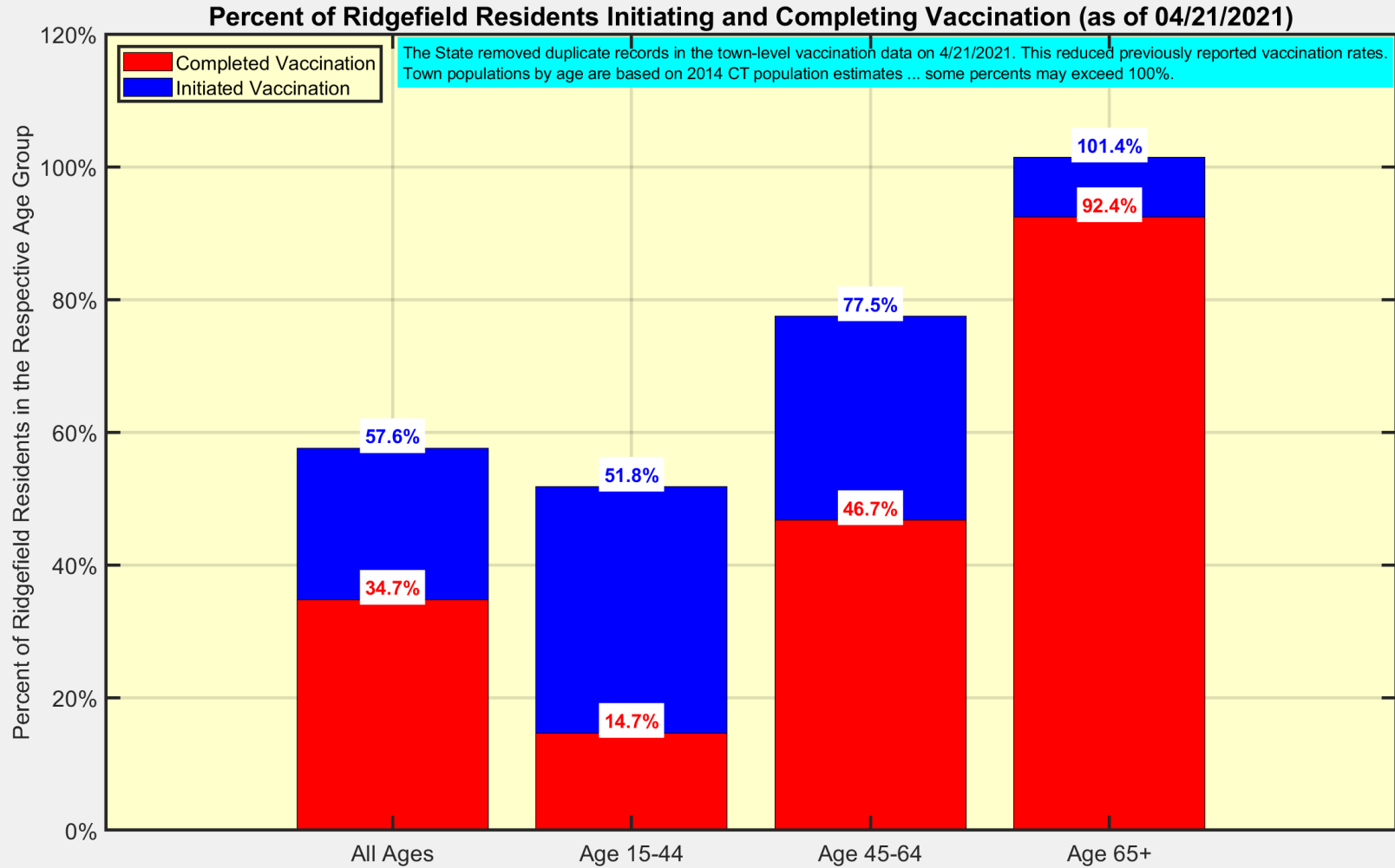
Data Source: <https://data.ct.gov>



# Latest Vaccination Rates for Towns in Fairfield County



# Latest Vaccination Rates for Ridgefield Residents



Data Source: <https://data.ct.gov>



Ridgefield COVID-19 Task Force