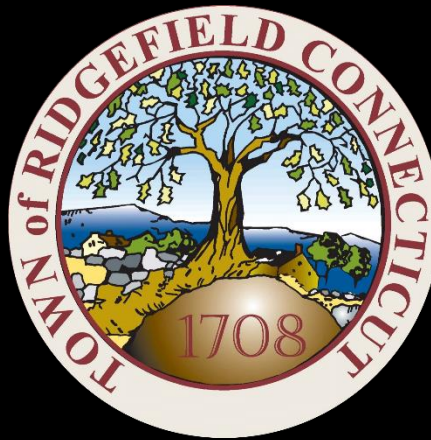


Ridgefield COVID Summary

Ridgefield COVID-19 Task Force



Data downloaded from
<https://data.ct.gov/browse?category=Health+and+Human+Services>

Data downloaded on Thursday, April 22, 2021 at 4:00 PM
This reflects data through Wednesday, April 21, 2021

Ridgefield Summary

Ridgefield	Wednesday 04/21/2021	Tuesday 04/20/2021
Number of New Cases Reported	4	1
New Case Rate (per 100,000 Residents)	13.7	13.7
New Test Rate (per 100,000 Residents)	720.6	690.8
Test Positivity	1.9%	2.0%
Fairfield County	Wednesday 04/21/2021	Tuesday 04/20/2021
Number of New Cases Reported	211	252
New Case Rate (per 100,000 Residents)	27.0	26.4
New Test Rate (per 100,000 Residents)	867.8	865.9
Test Positivity	3.1%	3.1%
Currently Hospitalized	169	158

Data Source: <https://data.ct.gov>. This report reflects data reported to the State through Wednesday 04/21/2021. The New Case Rate, New Test Rate, and Test Positivity are computed using 7-day moving averages.

Fairfield County ranks 437 (Highest 13.9%) out of 3142 US counties in New Case Rate (Per 100,000 Residents)

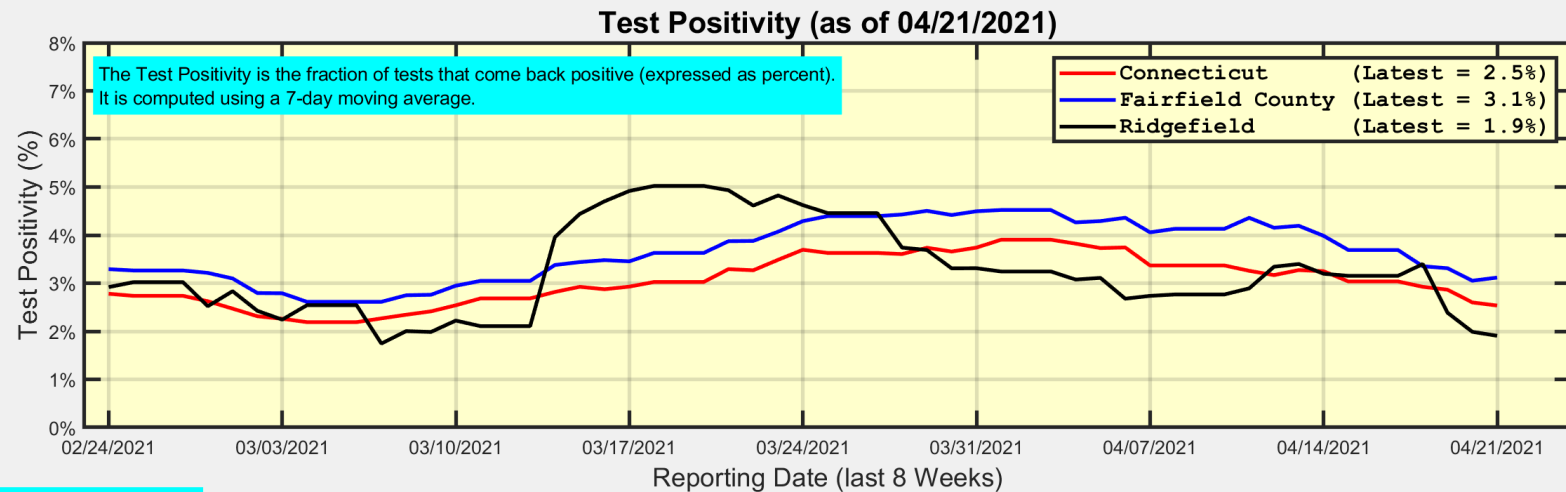
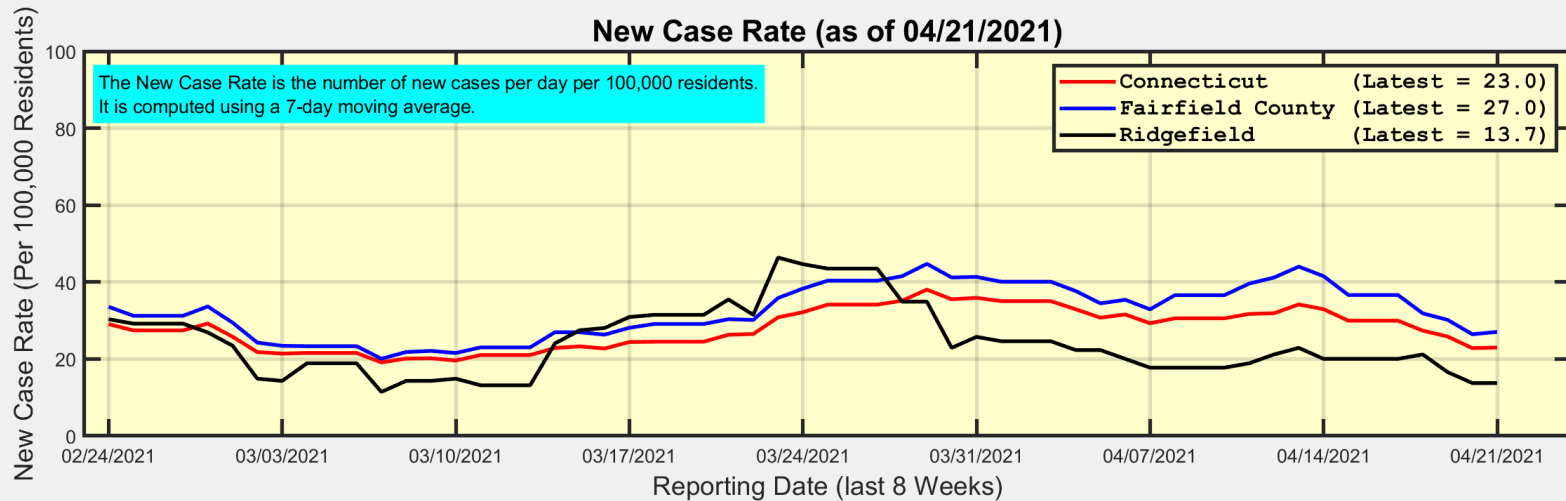
Our data science confirms CDC and other studies:

Wearing a Mask Reduces COVID Case Rates



Ridgefield COVID-19 Task Force

New Case Rates and Test Positivity for Connecticut, Fairfield County, and Ridgefield



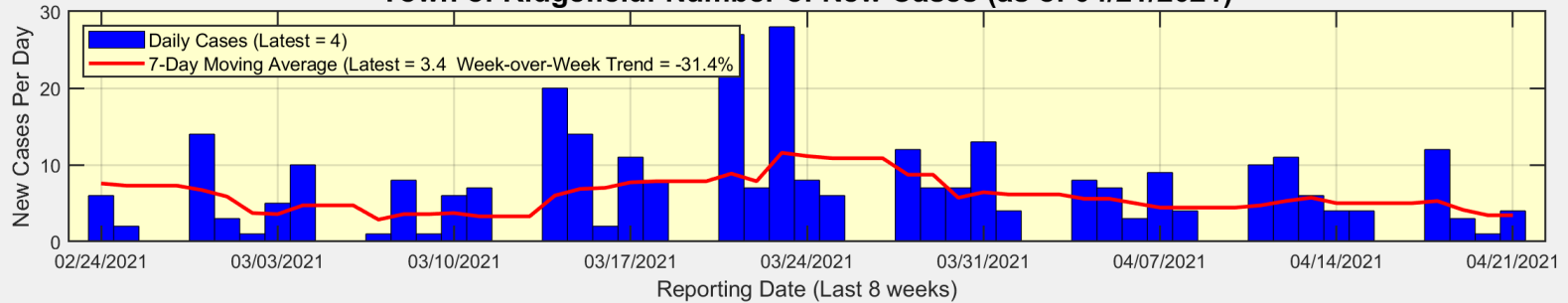
Data Source: <https://data.ct.gov>



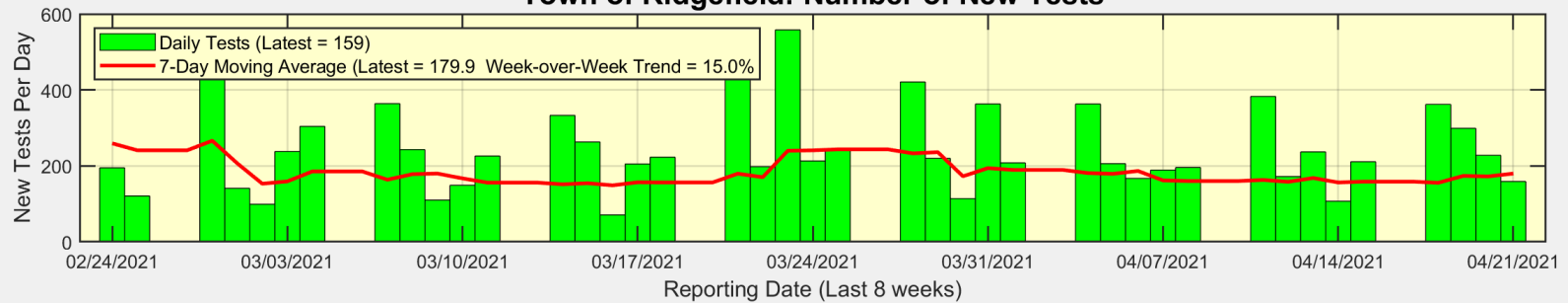
Ridgefield COVID-19 Task Force

New Cases, New Tests, and Test Positivity for Ridgefield

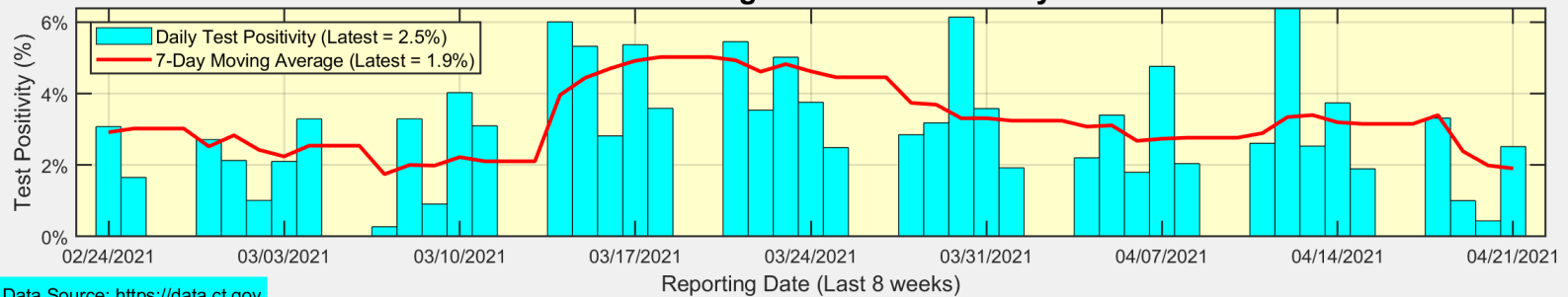
Town of Ridgefield: Number of New Cases (as of 04/21/2021)



Town of Ridgefield: Number of New Tests



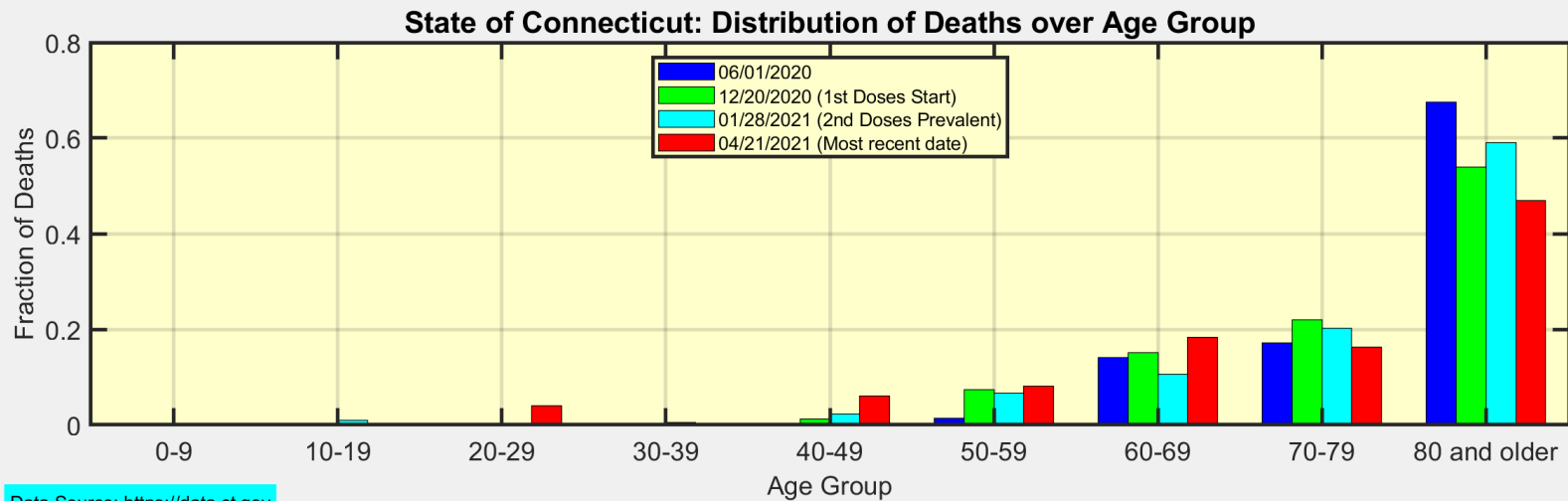
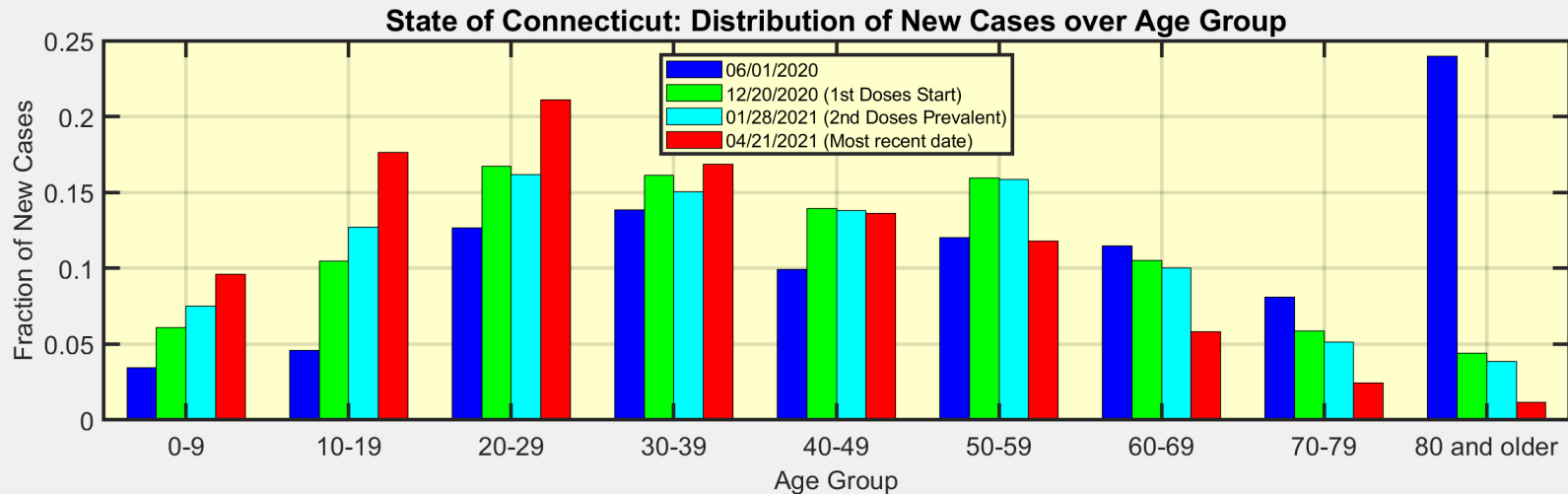
Town of Ridgefield: Test Positivity



Data Source: <https://data.ct.gov>



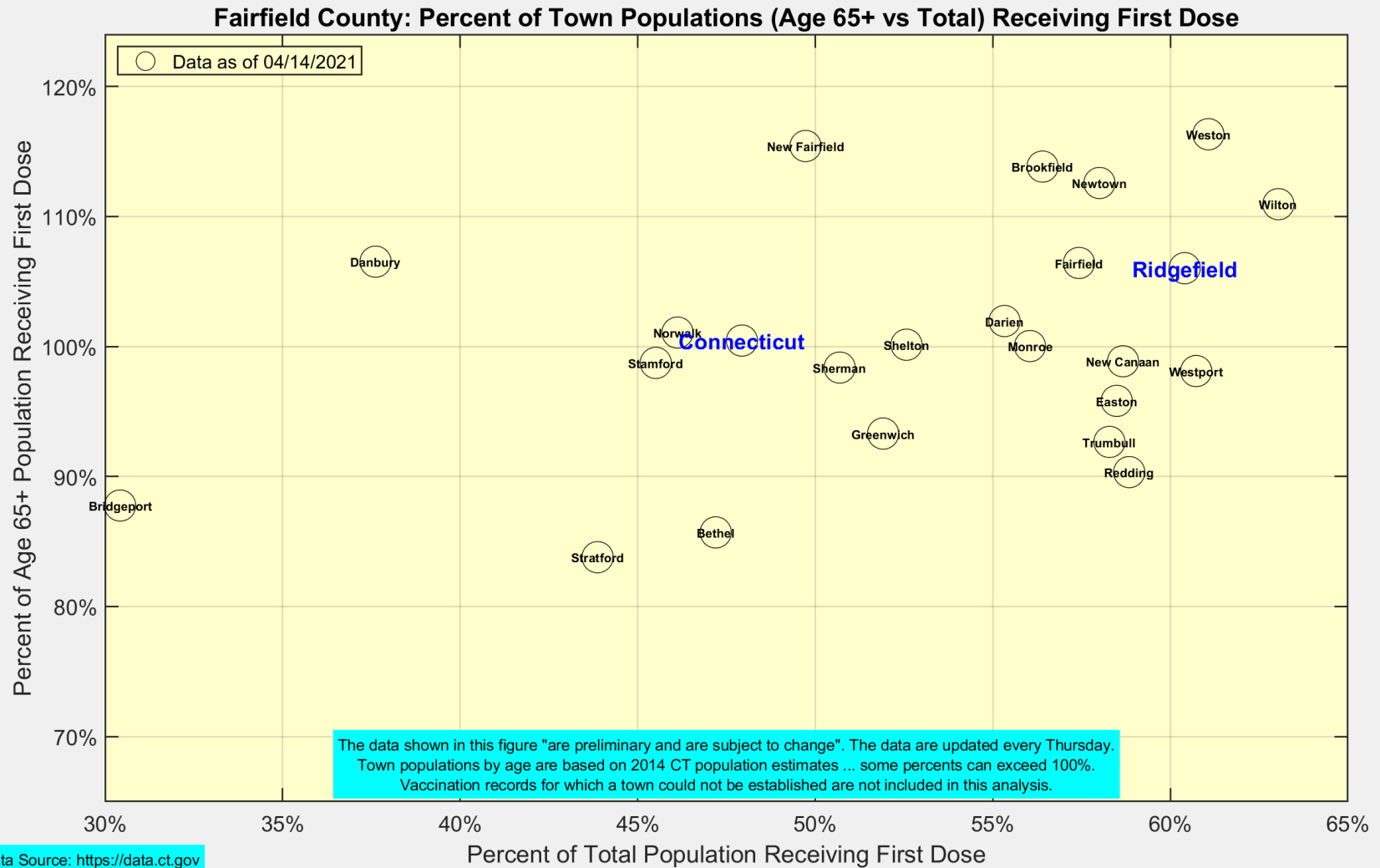
We are seeing more cases in ages 10-39 as ages 60+ become fully vaccinated



Data Source: <https://data.ct.gov>



Latest Vaccination Rates for Towns in Fairfield County



Number of Ridgefield Residents Receiving First Dose (Weekly)

