

Ridgefield COVID Summary

Ridgefield COVID-19 Task Force



Data downloaded from
<https://data.ct.gov/browse?category=Health+and+Human+Services>

Data downloaded on Wednesday, April 21, 2021 at 4:00 PM
This reflects data through Tuesday, April 20, 2021

Ridgefield Summary

Ridgefield	Tuesday 04/20/2021	Monday 04/19/2021
Number of New Cases Reported	1	3
New Case Rate (per 100,000 Residents)	13.7	16.6
New Test Rate (per 100,000 Residents)	690.8	696.0
Test Positivity	2.0%	2.4%
Fairfield County	Tuesday 04/20/2021	Monday 04/19/2021
Number of New Cases Reported	252	251
New Case Rate (per 100,000 Residents)	26.4	30.2
New Test Rate (per 100,000 Residents)	866.0	911.7
Test Positivity	3.1%	3.3%
Currently Hospitalized	158	161
Data Source: https://data.ct.gov. This report reflects data reported to the State through Tuesday 04/20/2021. The New Case Rate, New Test Rate, and Test Positivity are computed using 7-day moving averages.		

Fairfield County ranks 350 (Highest 11.1%) out of 3142 US counties in New Case Rate (Per 100,000 Residents)

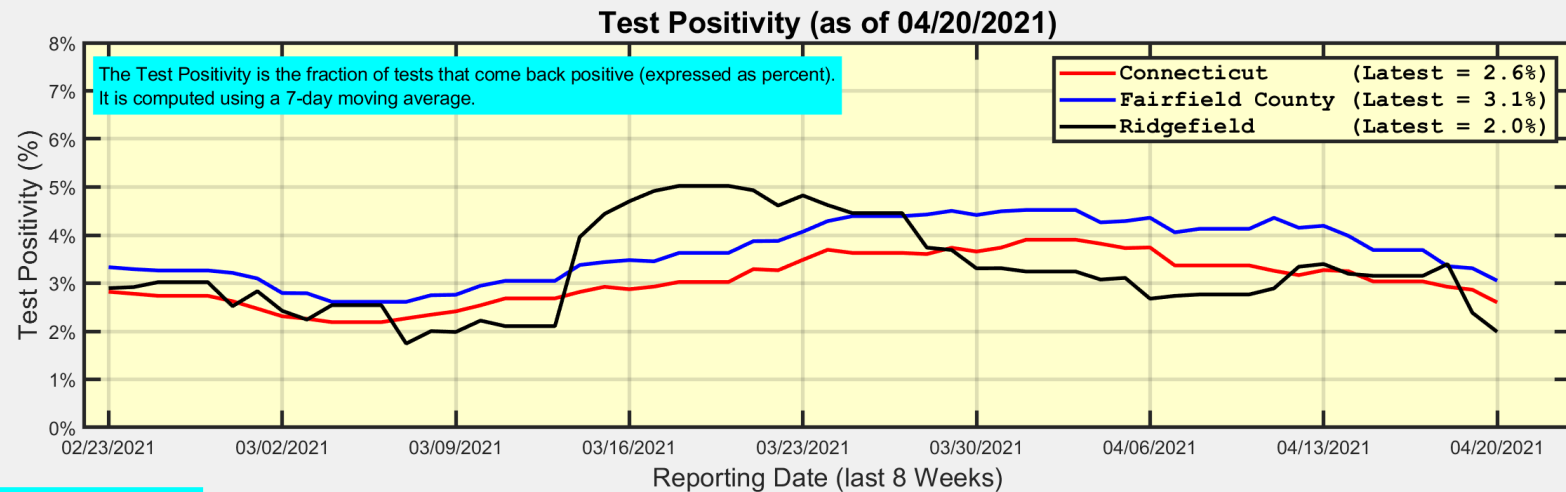
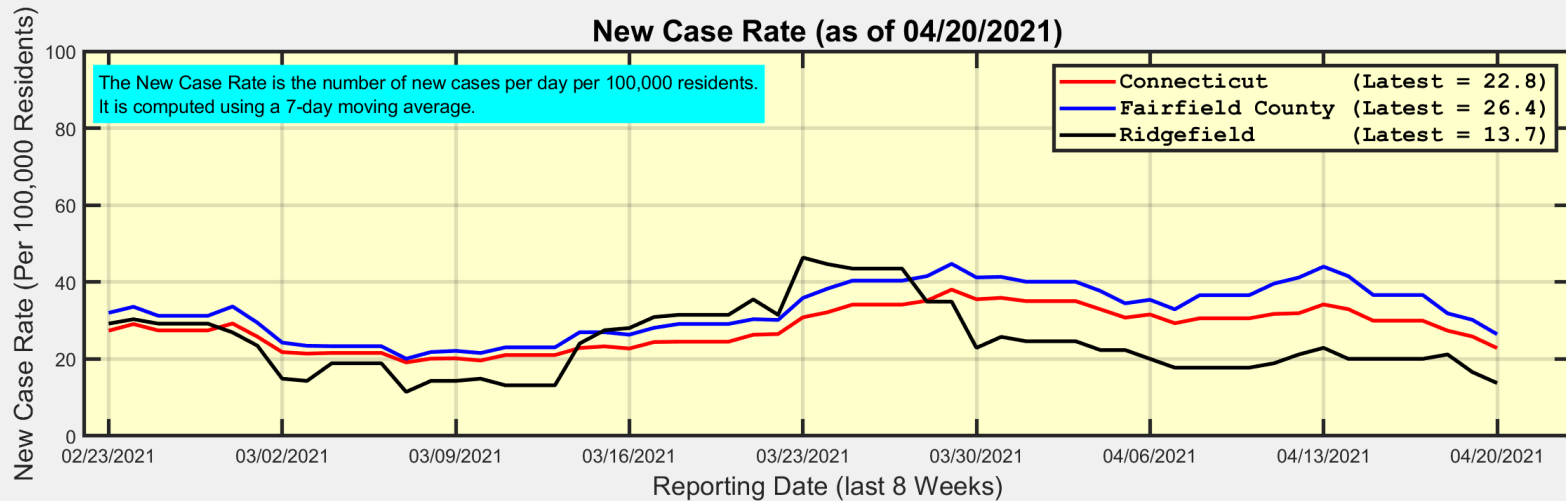
Our data science confirms CDC and other studies:

Wearing a Mask Reduces COVID Case Rates



Ridgefield COVID-19 Task Force

New Case Rates and Test Positivity for Connecticut, Fairfield County, and Ridgefield



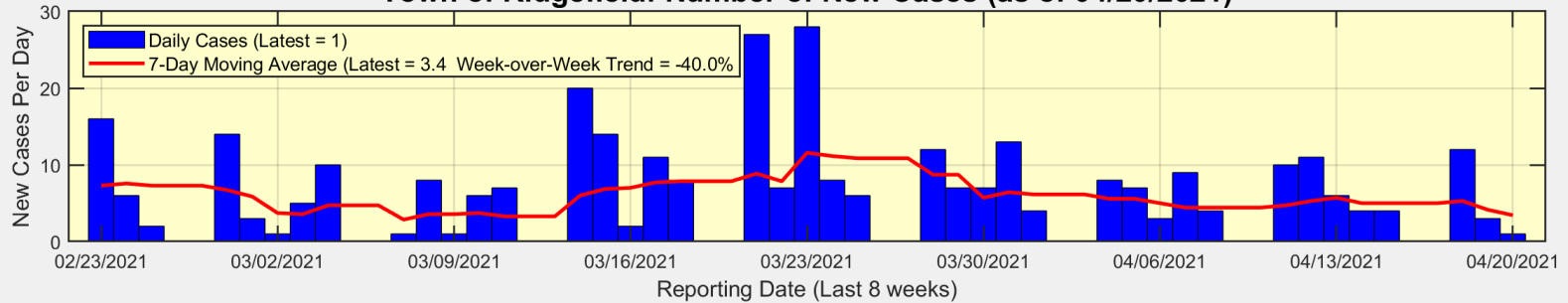
Data Source: <https://data.ct.gov>



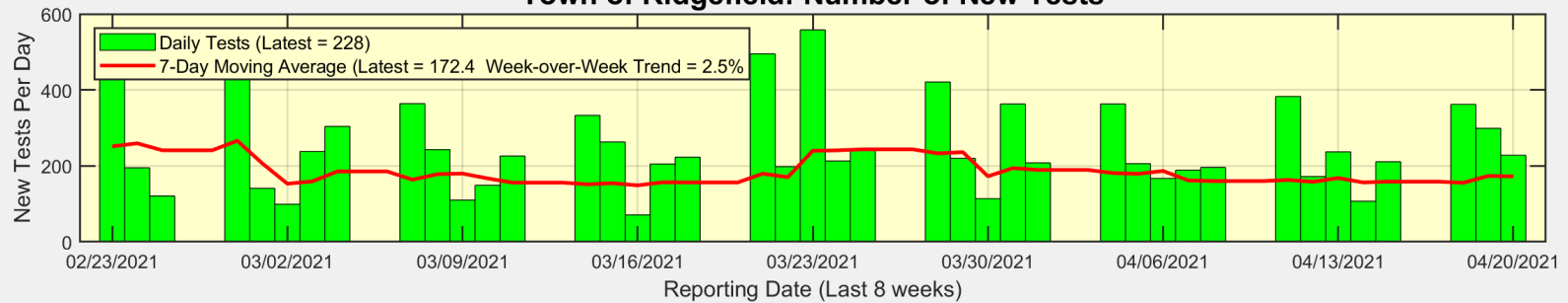
Ridgefield COVID-19 Task Force

New Cases, New Tests, and Test Positivity for Ridgefield

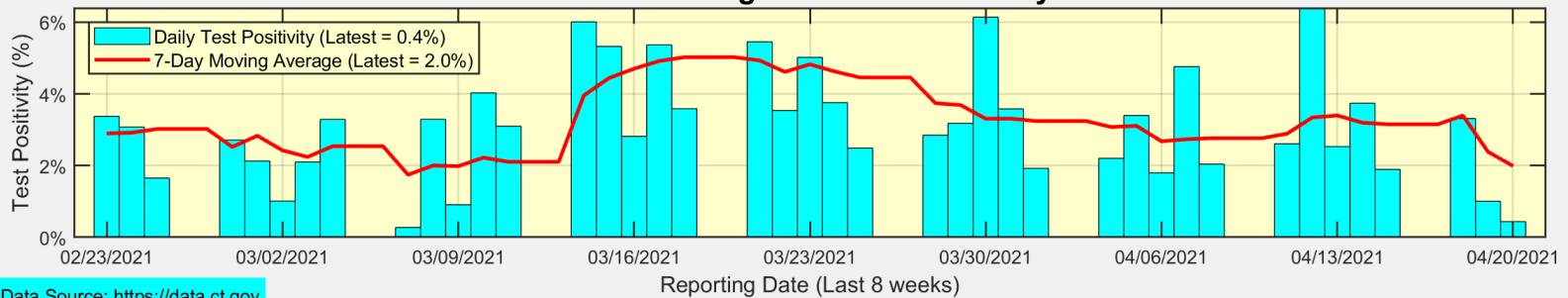
Town of Ridgefield: Number of New Cases (as of 04/20/2021)



Town of Ridgefield: Number of New Tests



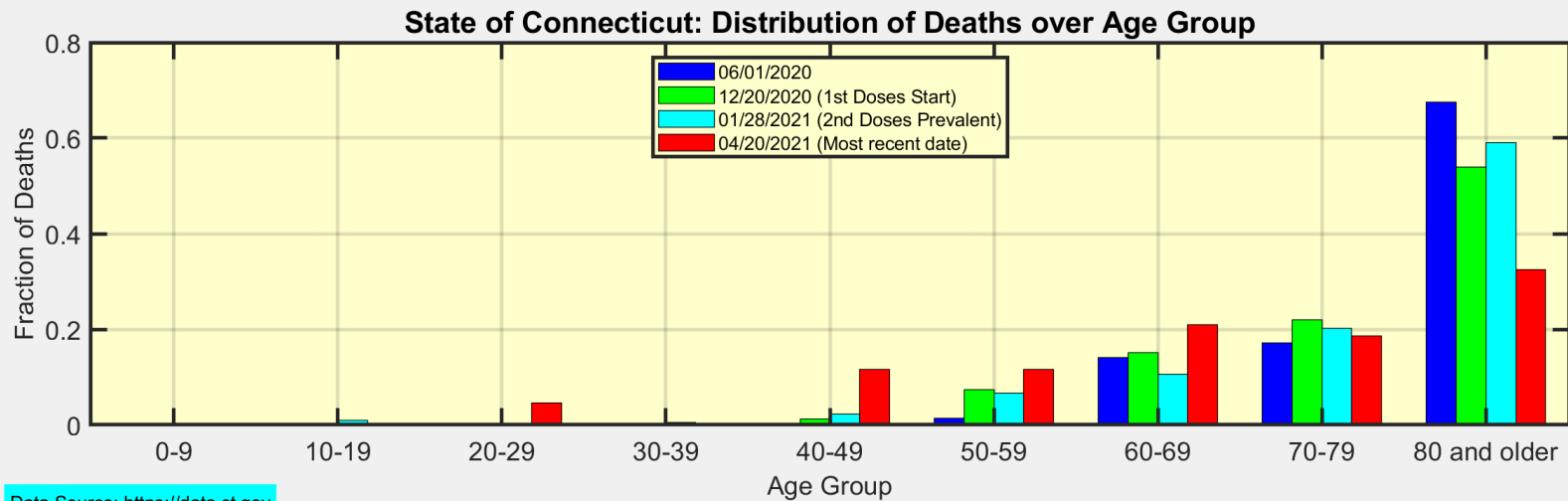
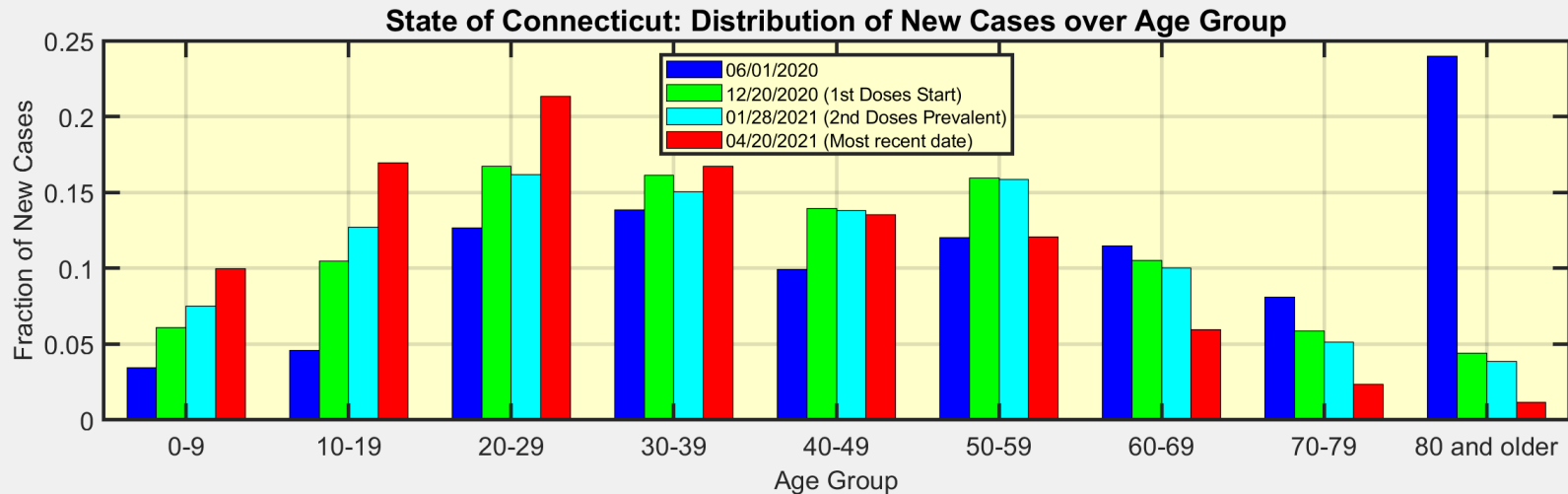
Town of Ridgefield: Test Positivity



Data Source: <https://data.ct.gov>



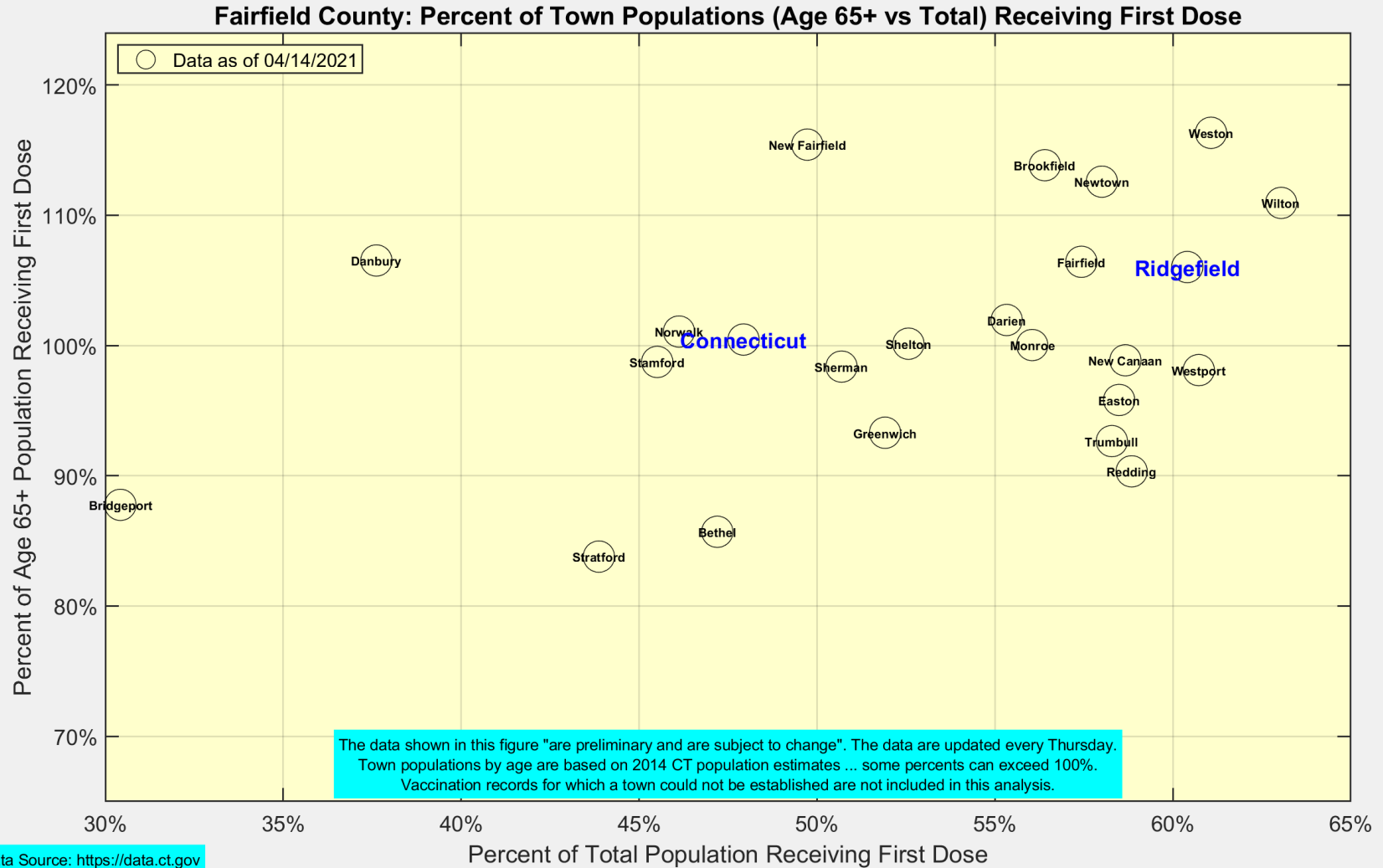
We are seeing more cases in ages 10-39 as ages 60+ become fully vaccinated



Data Source: <https://data.ct.gov>



Latest Vaccination Rates for Towns in Fairfield County



Number of Ridgefield Residents Receiving First Dose (Weekly)

