

Ridgefield COVID Summary

Ridgefield COVID-19 Task Force



Data downloaded from
<https://data.ct.gov/browse?category=Health+and+Human+Services>

Data downloaded on Tuesday, April 20, 2021 at 4:00 PM
This reflects data through Monday, April 19, 2021

Ridgefield Summary

Ridgefield	Monday 04/19/2021	Sunday 04/18/2021
Number of New Cases Reported	3	12
New Case Rate (per 100,000 Residents)	16.6	21.2
New Test Rate (per 100,000 Residents)	696.0	623.3
Test Positivity	2.4%	3.4%
Fairfield County	Monday 04/19/2021	Sunday 04/18/2021
Number of New Cases Reported	251	711
New Case Rate (per 100,000 Residents)	30.2	31.9
New Test Rate (per 100,000 Residents)	911.7	950.3
Test Positivity	3.3%	3.4%
Currently Hospitalized	161	150
Data Source: https://data.ct.gov . This report reflects data reported to the State through Monday 04/19/2021. The New Case Rate, New Test Rate, and Test Positivity are computed using 7-day moving averages.		
NOTE: The Number of New Cases Reported for Sunday is the TOTAL over the last THREE DAYS (Friday, Saturday, Sunday).		

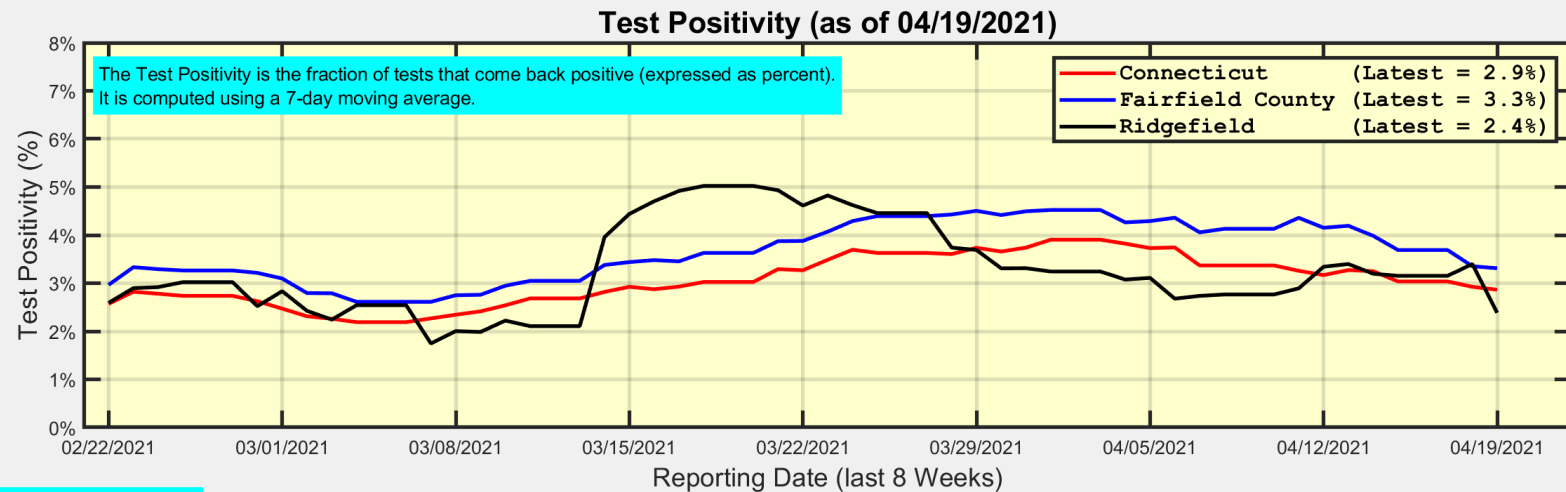
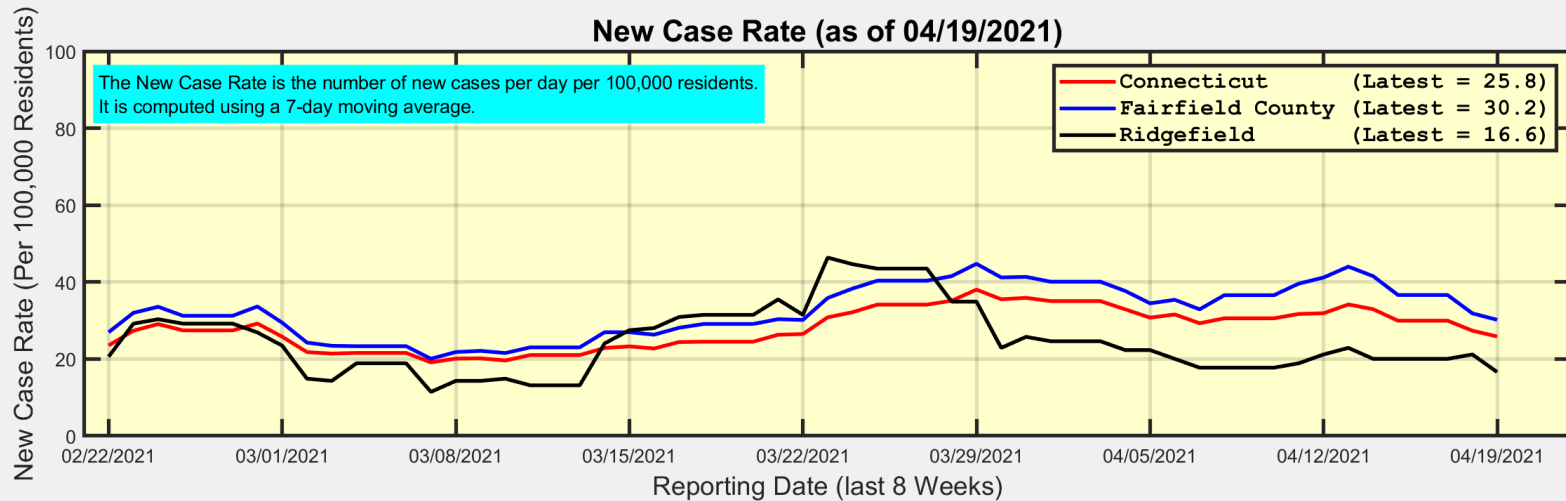
Fairfield County ranks 341 (Highest 10.9%) out of 3142 US counties in New Case Rate (Per 100,000 Residents)

Our data science confirms CDC and other studies:
Wearing a Mask Reduces COVID Case Rates



Ridgefield COVID-19 Task Force

New Case Rates and Test Positivity for Connecticut, Fairfield County, and Ridgefield

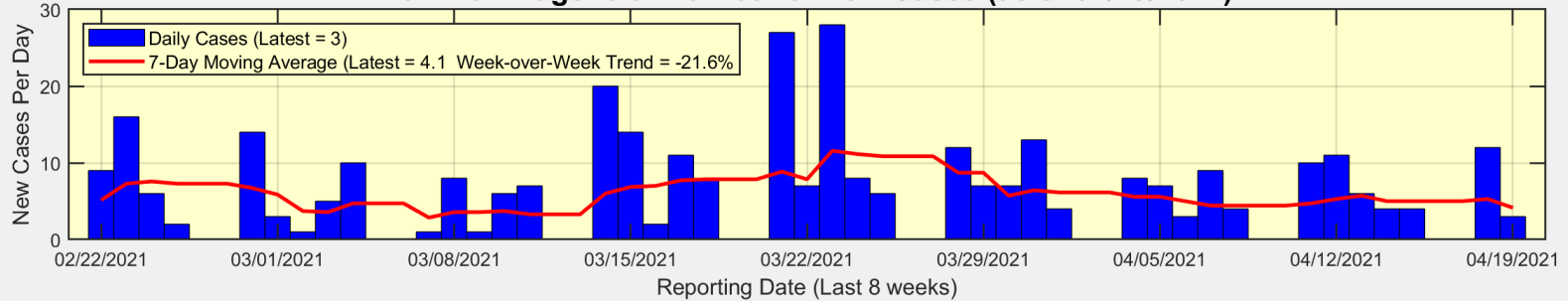


Data Source: <https://data.ct.gov>

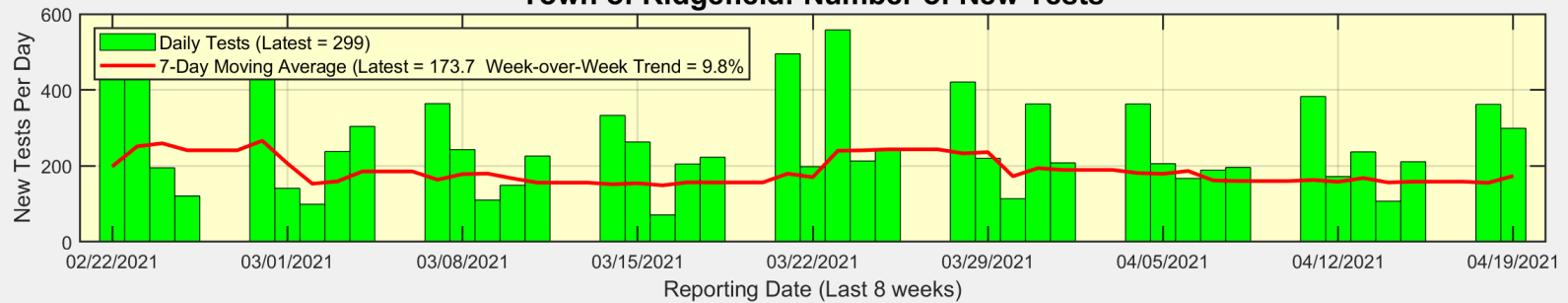


New Cases, New Tests, and Test Positivity for Ridgefield

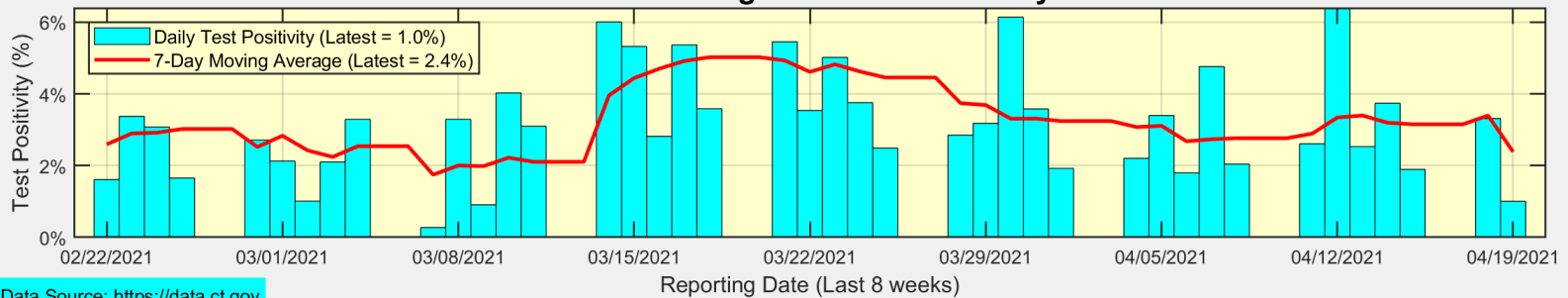
Town of Ridgefield: Number of New Cases (as of 04/19/2021)



Town of Ridgefield: Number of New Tests



Town of Ridgefield: Test Positivity

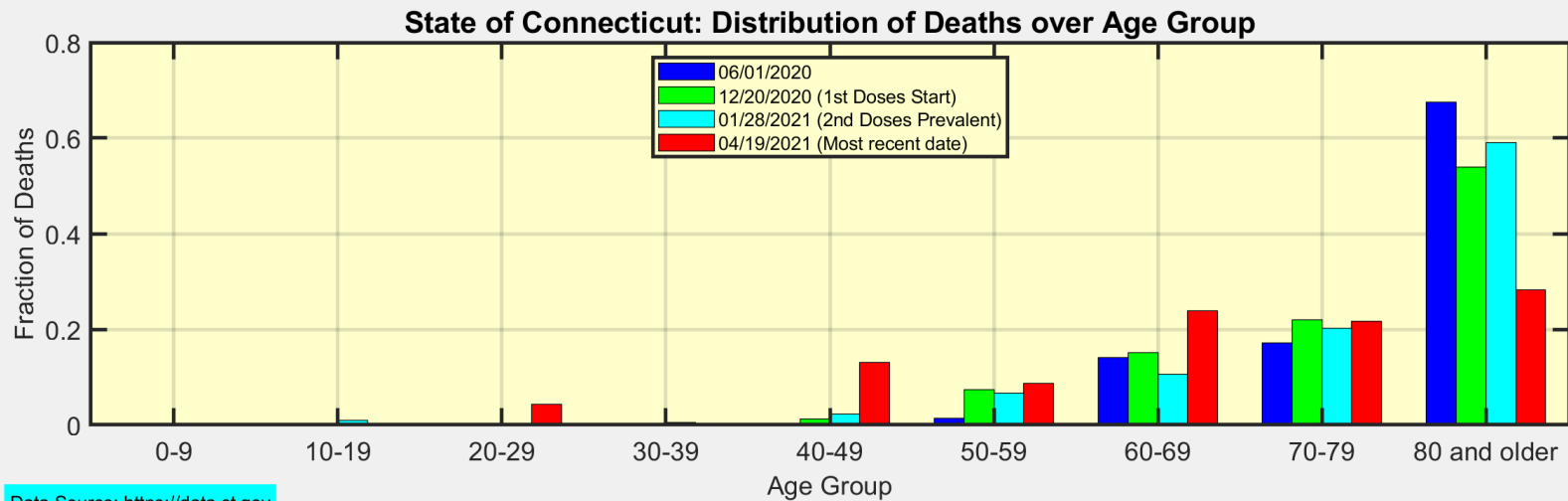
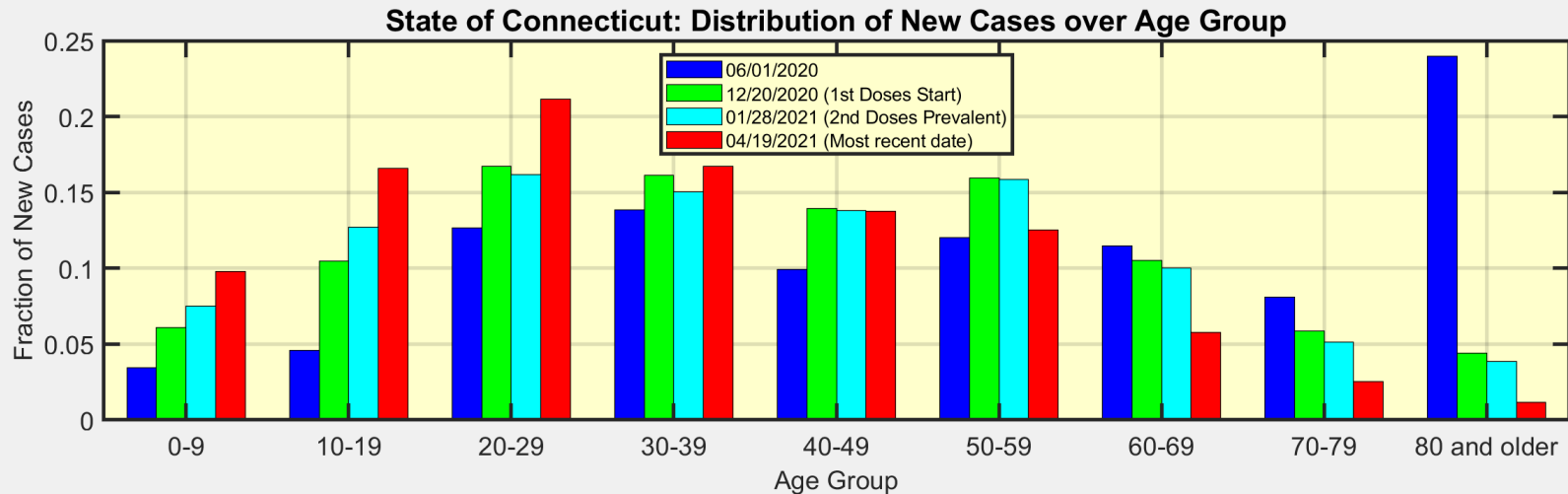


Data Source: <https://data.ct.gov>



Ridgefield COVID-19 Task Force

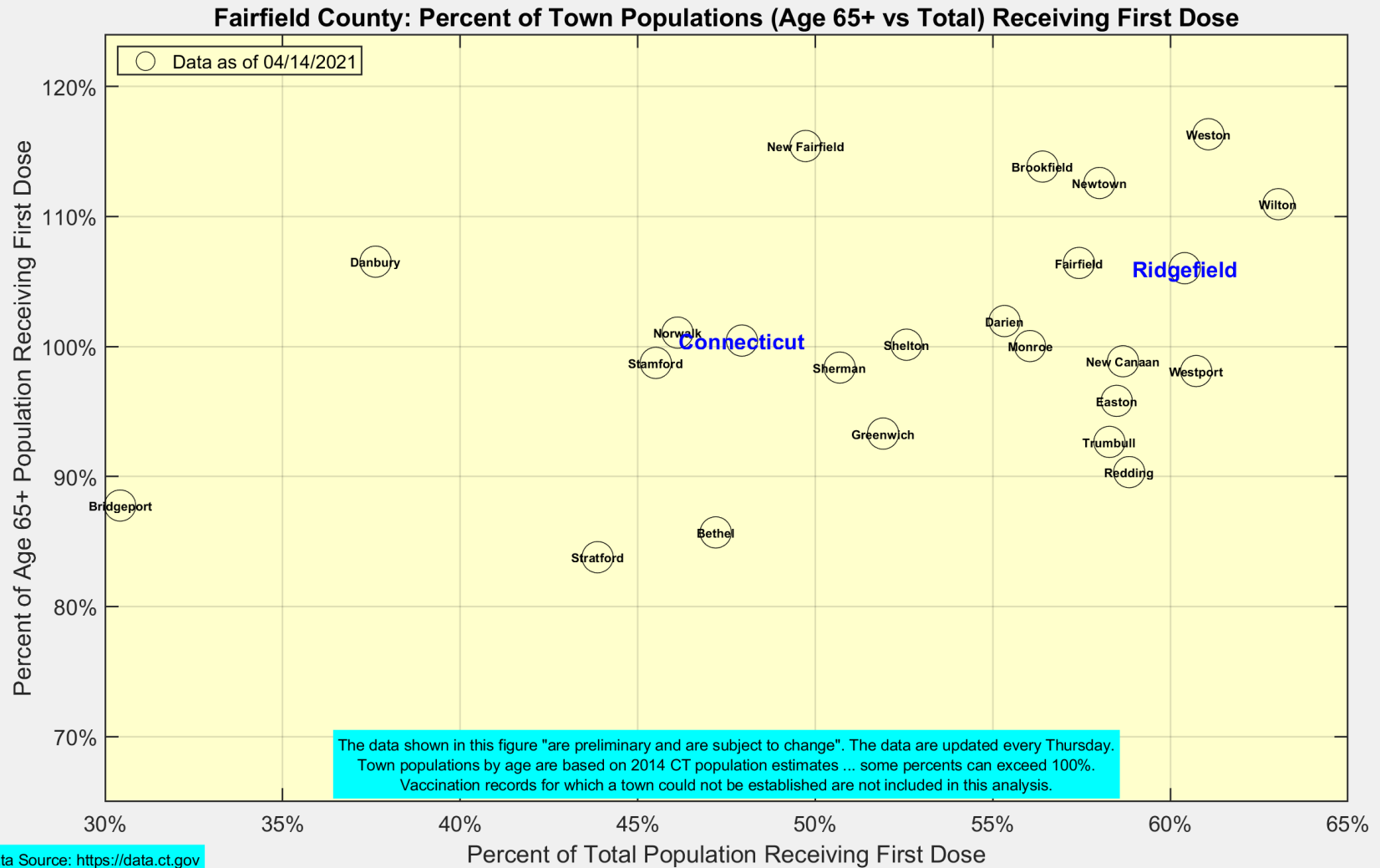
We are seeing more cases in ages 10-39 as ages 60+ become fully vaccinated



Data Source: <https://data.ct.gov>



Latest Vaccination Rates for Towns in Fairfield County



Number of Ridgefield Residents Receiving First Dose (Weekly)

