

Ridgefield COVID Summary

Ridgefield COVID-19 Task Force



Data downloaded from
<https://data.ct.gov/browse?category=Health+and+Human+Services>

Data downloaded on Friday, April 02, 2021 at 4:00 PM
This reflects data through Thursday, April 01, 2021

Ridgefield Summary

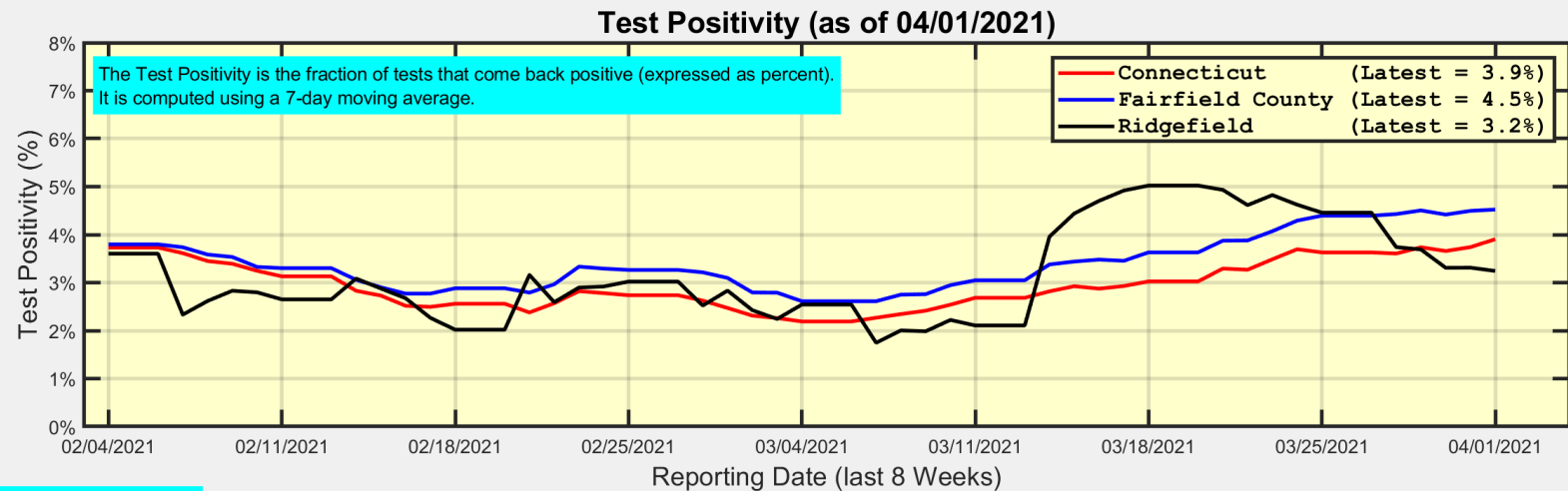
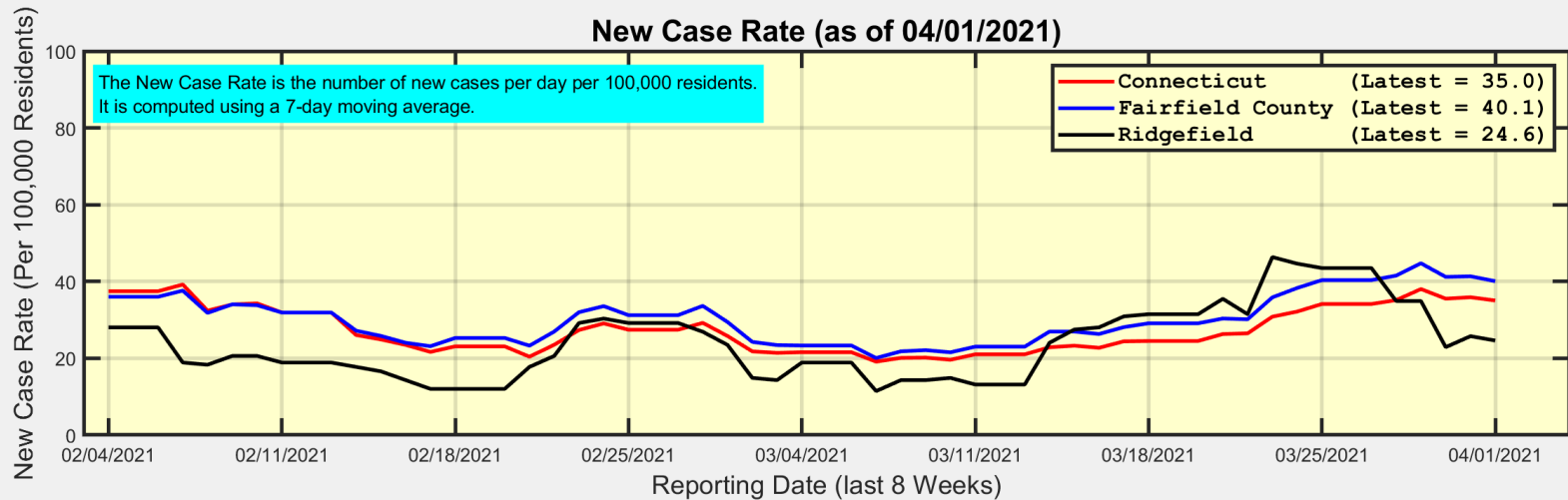
Ridgefield	Thursday 04/01/2021	Wednesday 03/31/2021
Number of New Cases Reported	4	13
New Case Rate (per 100,000 Residents)	24.6	25.8
New Test Rate (per 100,000 Residents)	759.0	777.8
Test Positivity	3.2%	3.3%
Fairfield County	Thursday 04/01/2021	Wednesday 03/31/2021
Number of New Cases Reported	441	498
New Case Rate (per 100,000 Residents)	40.1	41.3
New Test Rate (per 100,000 Residents)	886.5	919.7
Test Positivity	4.5%	4.5%
Currently Hospitalized	125	124
Data Source: https://data.ct.gov. This report reflects data reported to the State through Thursday 04/01/2021. The New Case Rate, New Test Rate, and Test Positivity are computed using 7-day moving averages.		

Our data science confirms CDC and other studies:

Wearing a Mask Reduces COVID Case Rates



New Case Rates and Test Positivity for Connecticut, Fairfield County, and Ridgefield

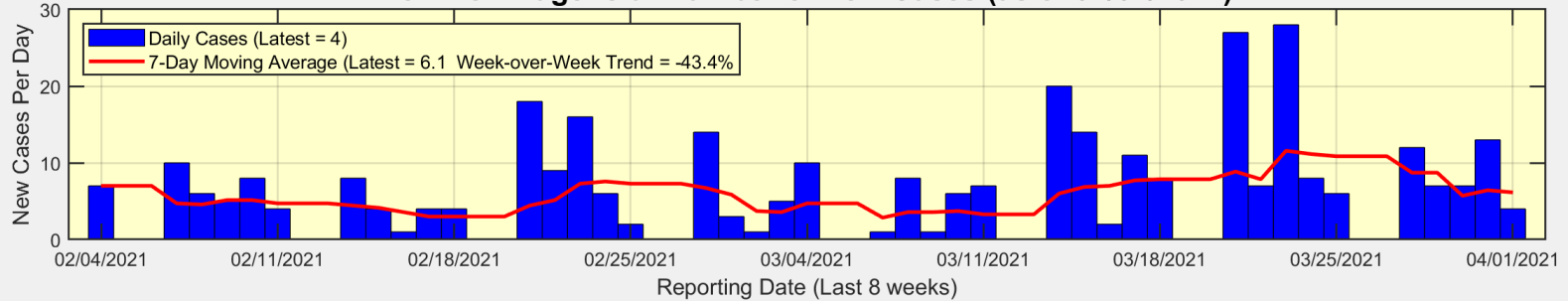


Data Source: <https://data.ct.gov>

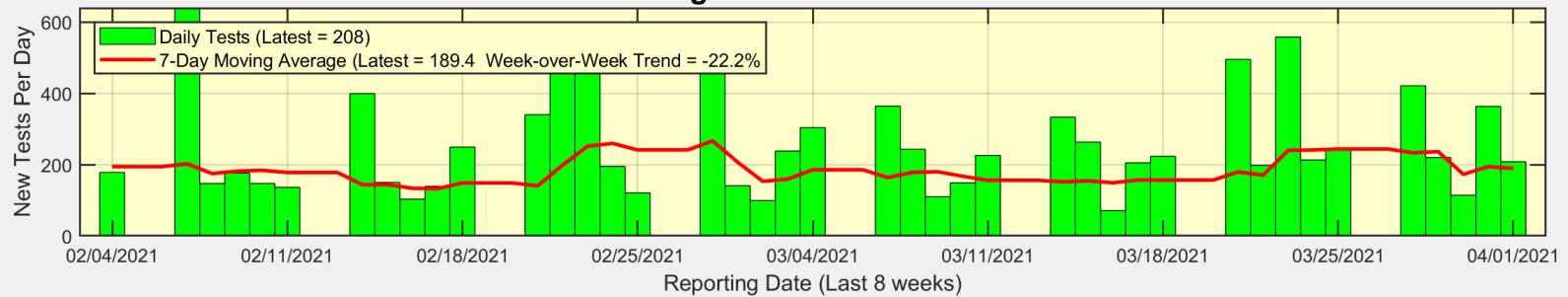


New Cases, New Tests, and Test Positivity for Ridgefield

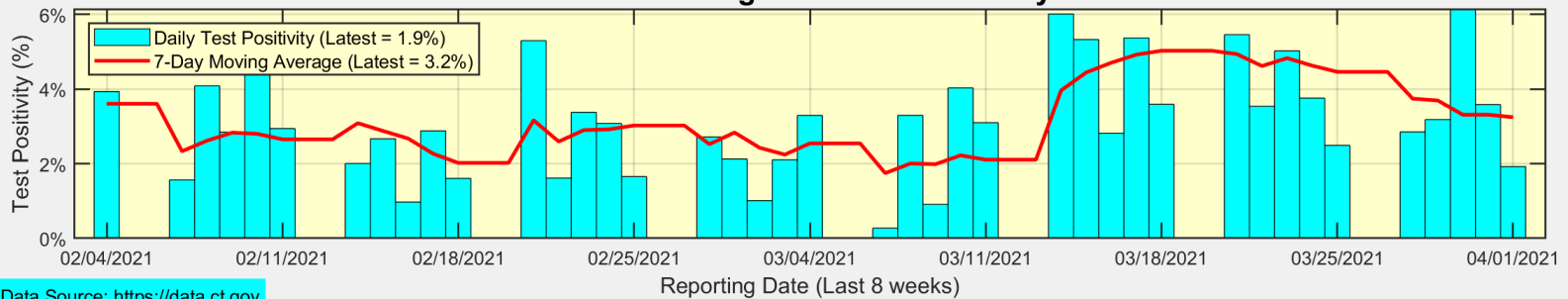
Town of Ridgefield: Number of New Cases (as of 04/01/2021)



Town of Ridgefield: Number of New Tests



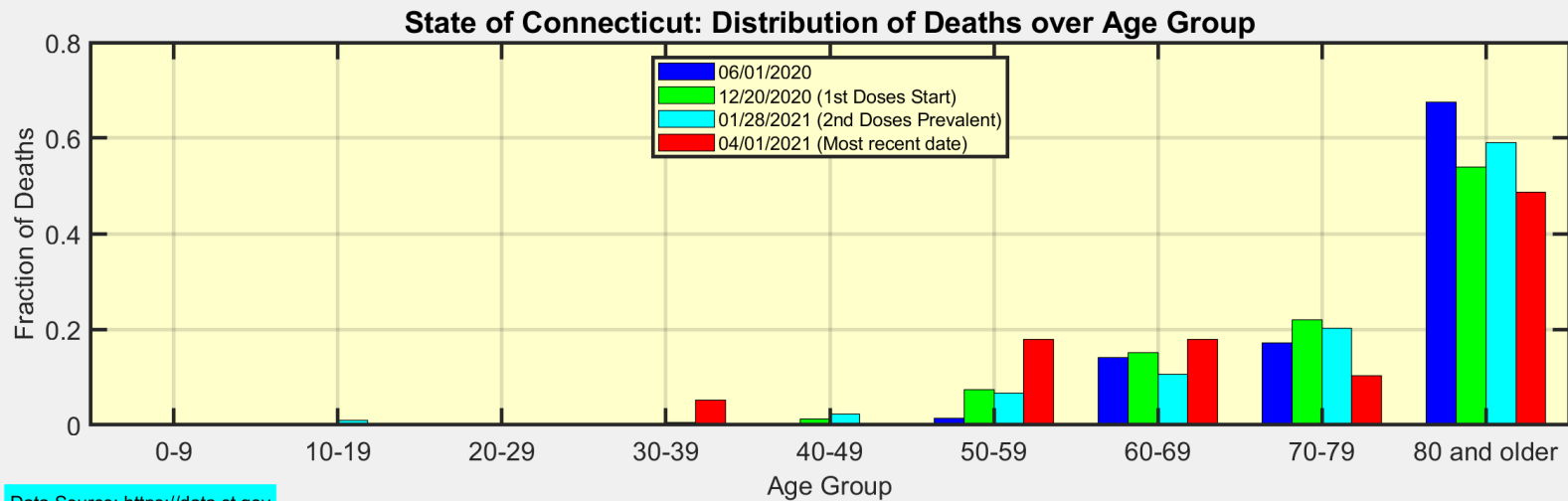
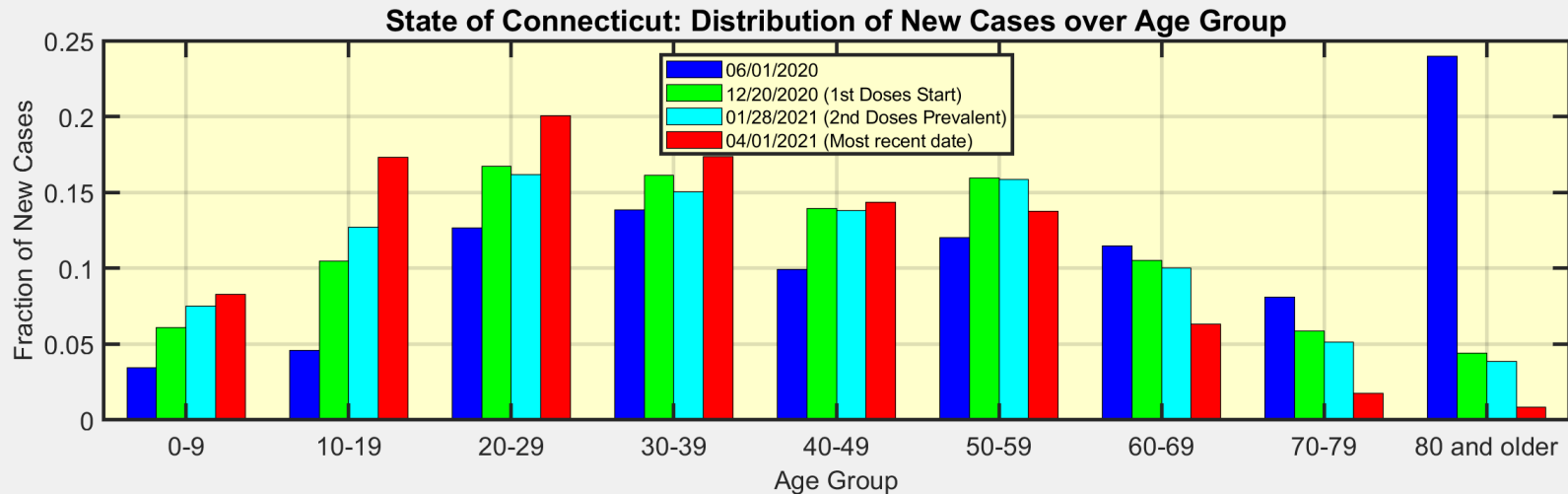
Town of Ridgefield: Test Positivity



Data Source: <https://data.ct.gov>



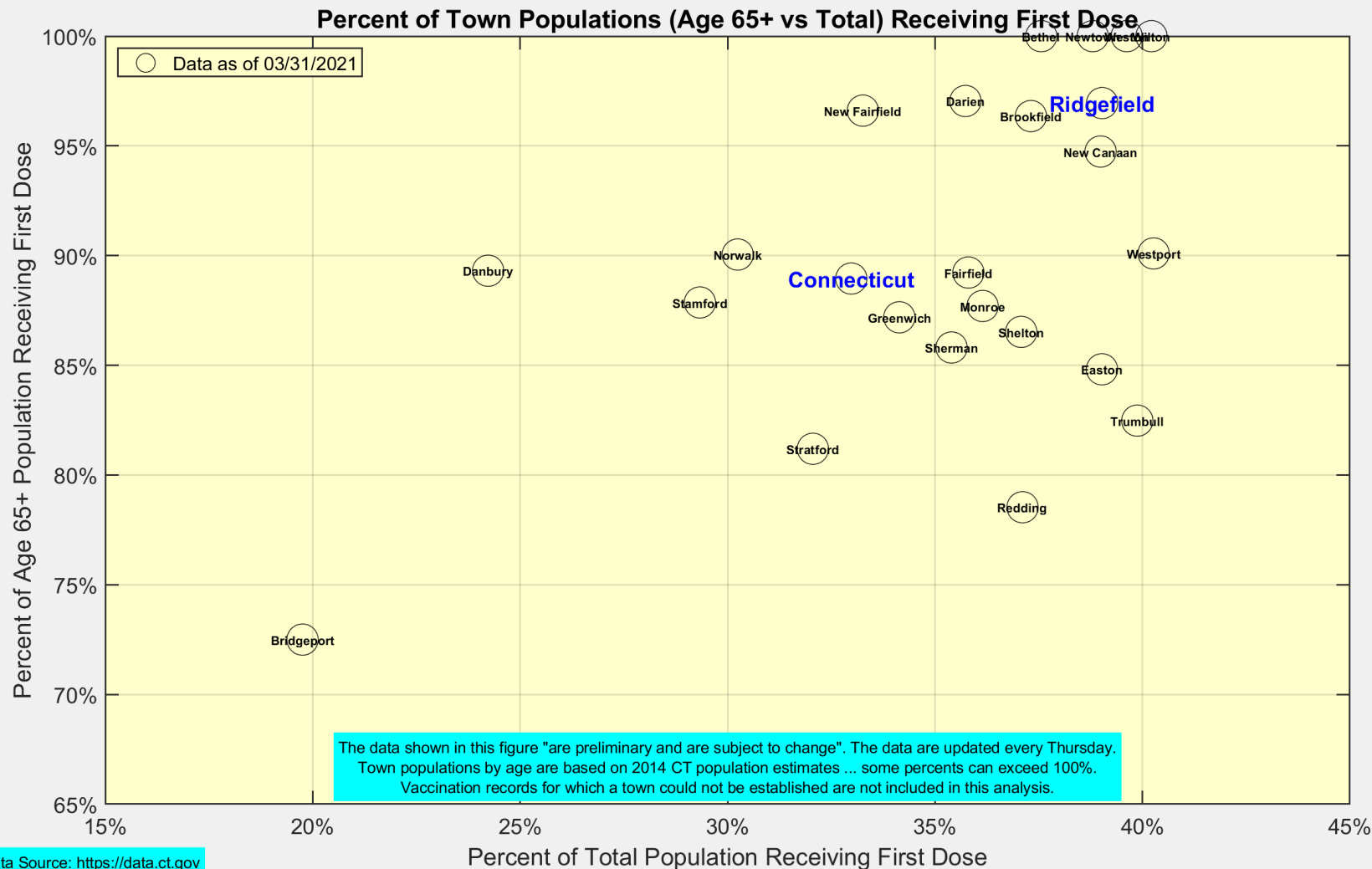
We are seeing more cases in ages 10-39 as ages 60+ become fully vaccinated



Data Source: <https://data.ct.gov>



Latest Vaccination Rates for Towns in Fairfield County



Number of Ridgefield Residents Receiving First Dose (Weekly)

