

## Ridgefield COVID Summary

Ridgefield COVID-19 Task Force



Data downloaded from  
<https://data.ct.gov/browse?category=Health+and+Human+Services>

Data downloaded on Thursday, April 01, 2021 at 4:00 PM  
This reflects data through Wednesday, March 31, 2021

## Ridgefield Summary

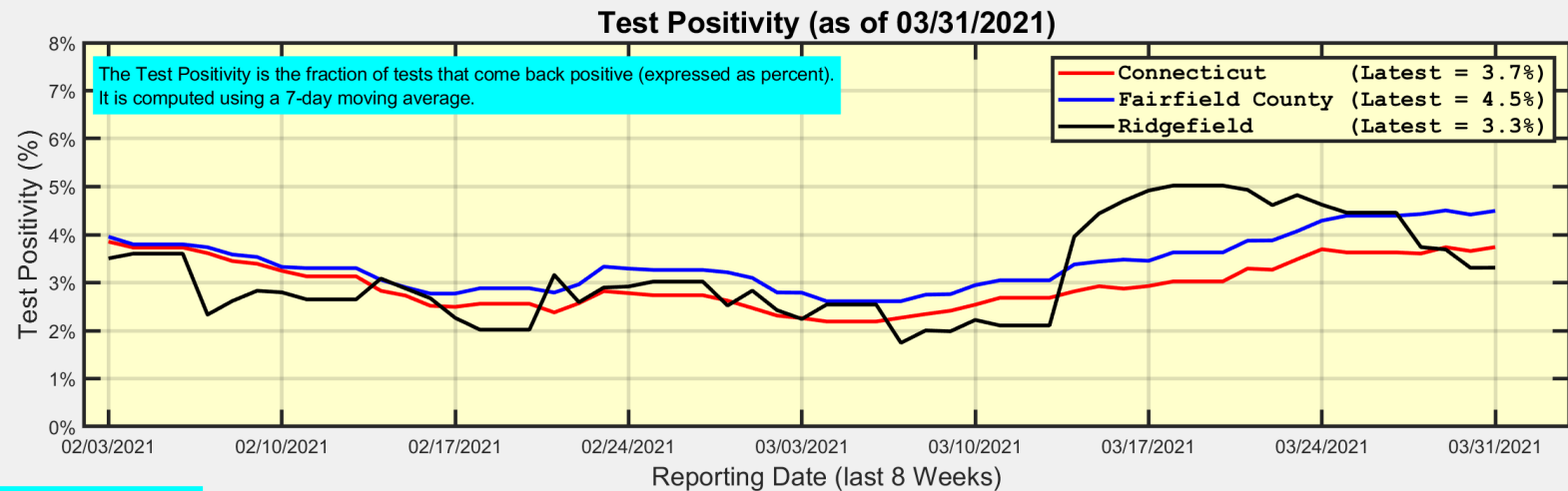
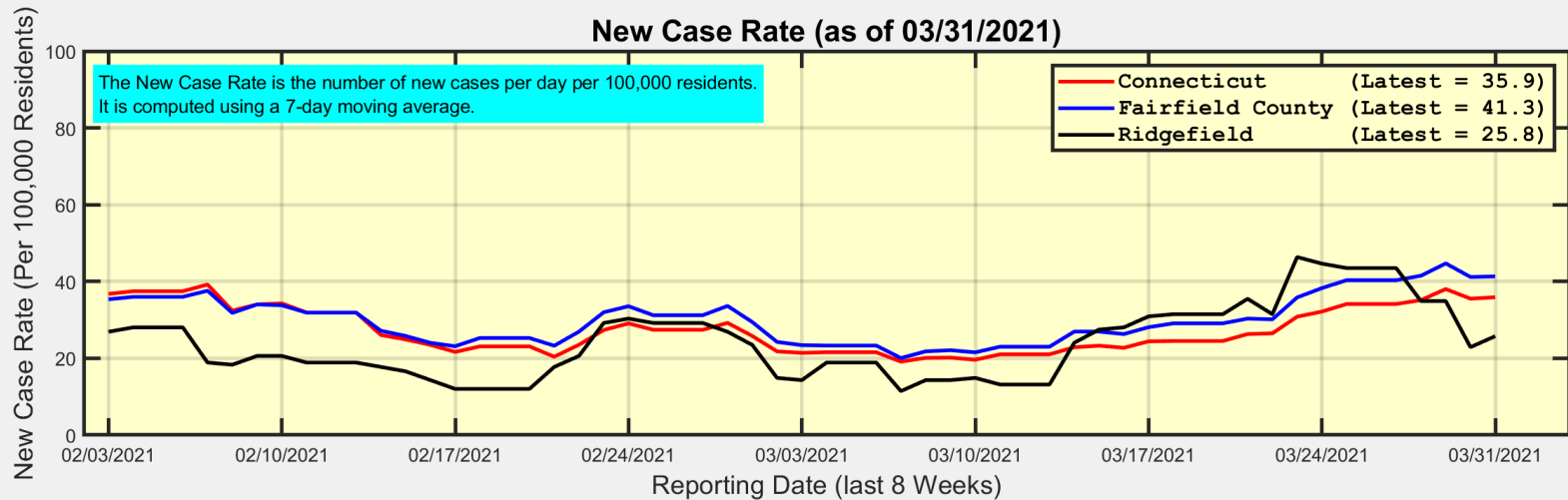
Ridgefield	Wednesday 03/31/2021	Tuesday 03/30/2021
Number of New Cases Reported	13	7
New Case Rate (per 100,000 Residents)	25.8	22.9
New Test Rate (per 100,000 Residents)	777.8	692.0
Test Positivity	3.3%	3.3%
Fairfield County	Wednesday 03/31/2021	Tuesday 03/30/2021
Number of New Cases Reported	498	252
New Case Rate (per 100,000 Residents)	41.3	41.2
New Test Rate (per 100,000 Residents)	919.2	932.0
Test Positivity	4.5%	4.4%
Currently Hospitalized	124	135
Data Source: <a href="https://data.ct.gov">https://data.ct.gov</a> . This report reflects data reported to the State through Wednesday 03/31/2021. The New Case Rate, New Test Rate, and Test Positivity are computed using 7-day moving averages.		

Our data science confirms CDC and other studies:

***Wearing a Mask Reduces COVID Case Rates***



# New Case Rates and Test Positivity for Connecticut, Fairfield County, and Ridgefield

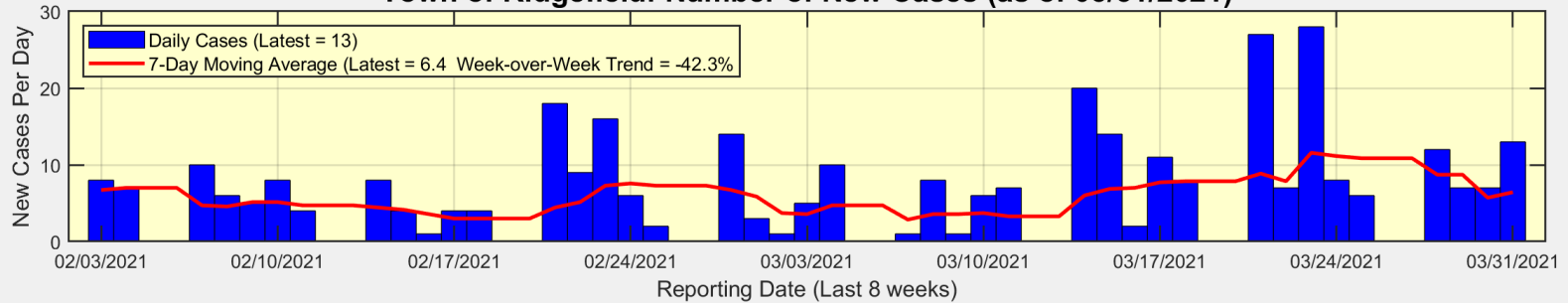


Data Source: <https://data.ct.gov>

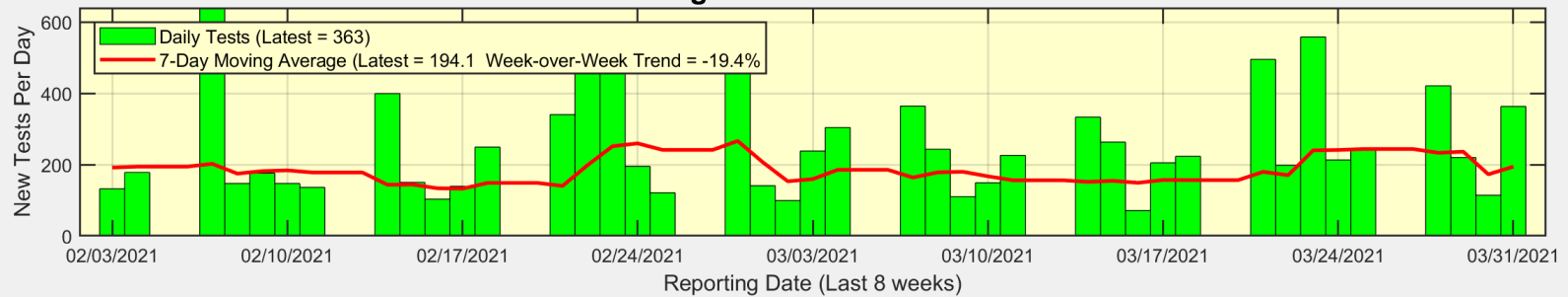


# New Cases, New Tests, and Test Positivity for Ridgefield

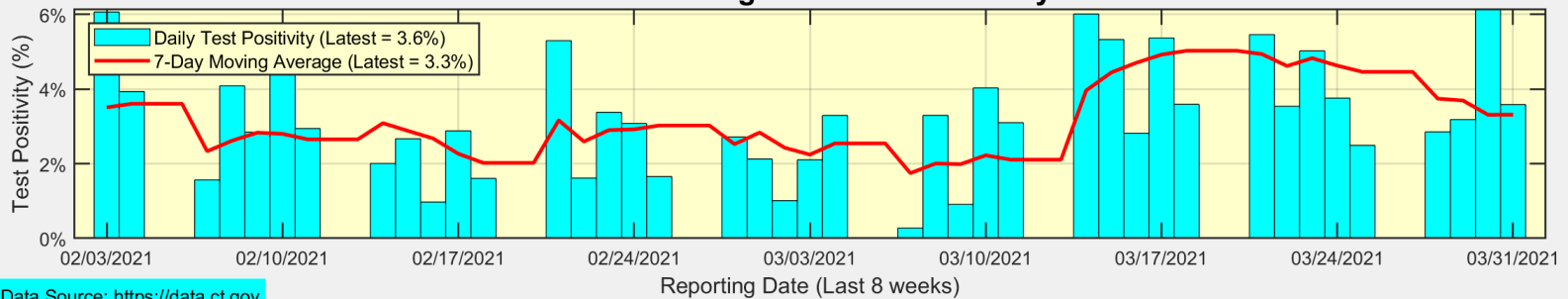
**Town of Ridgefield: Number of New Cases (as of 03/31/2021)**



**Town of Ridgefield: Number of New Tests**



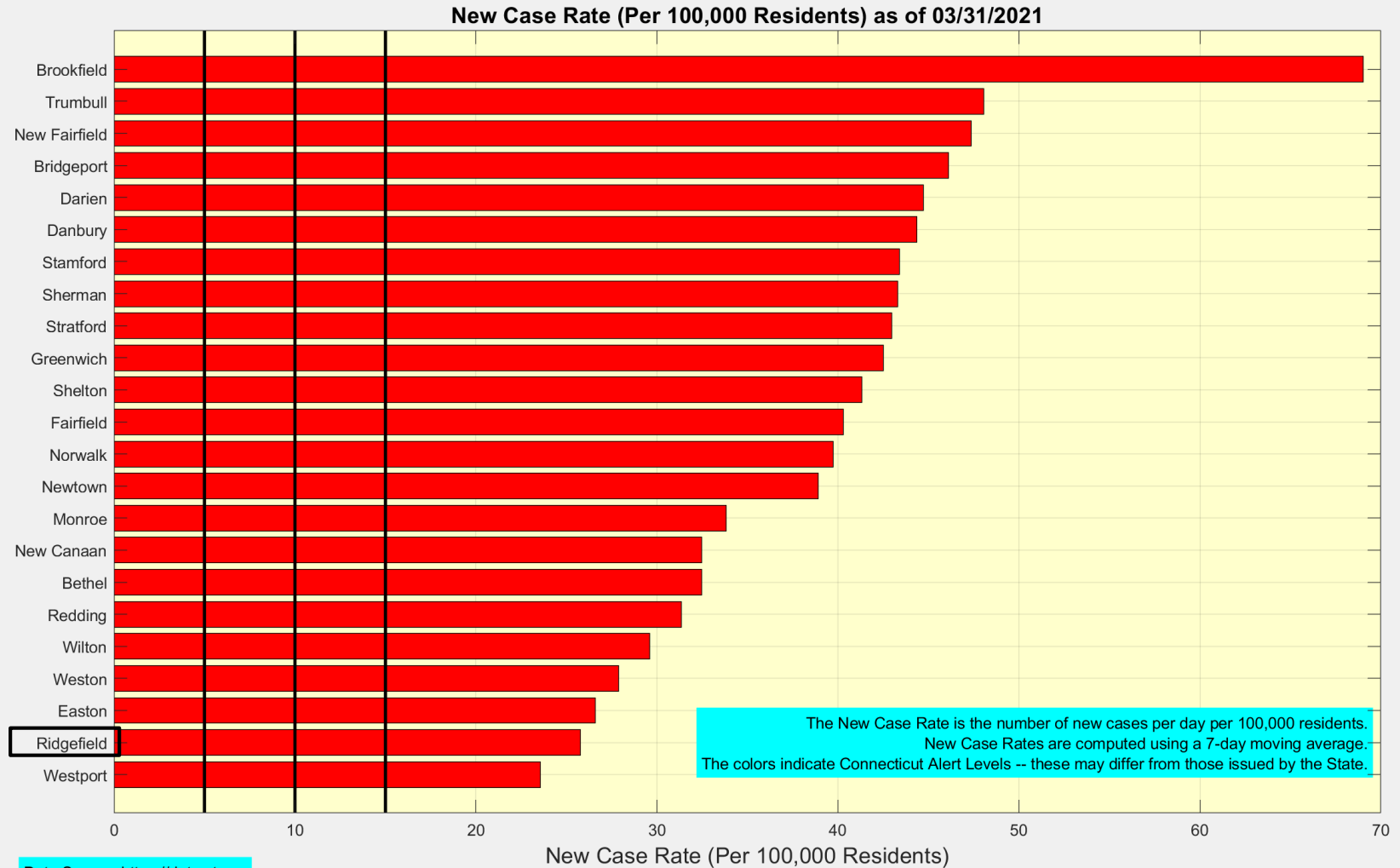
**Town of Ridgefield: Test Positivity**



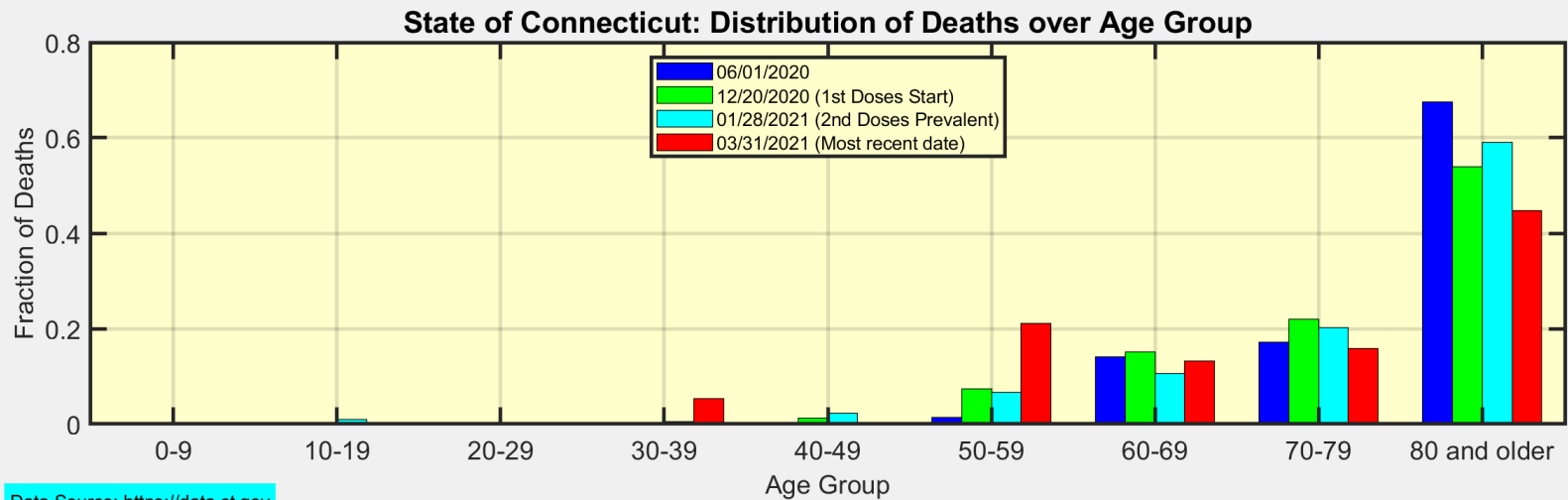
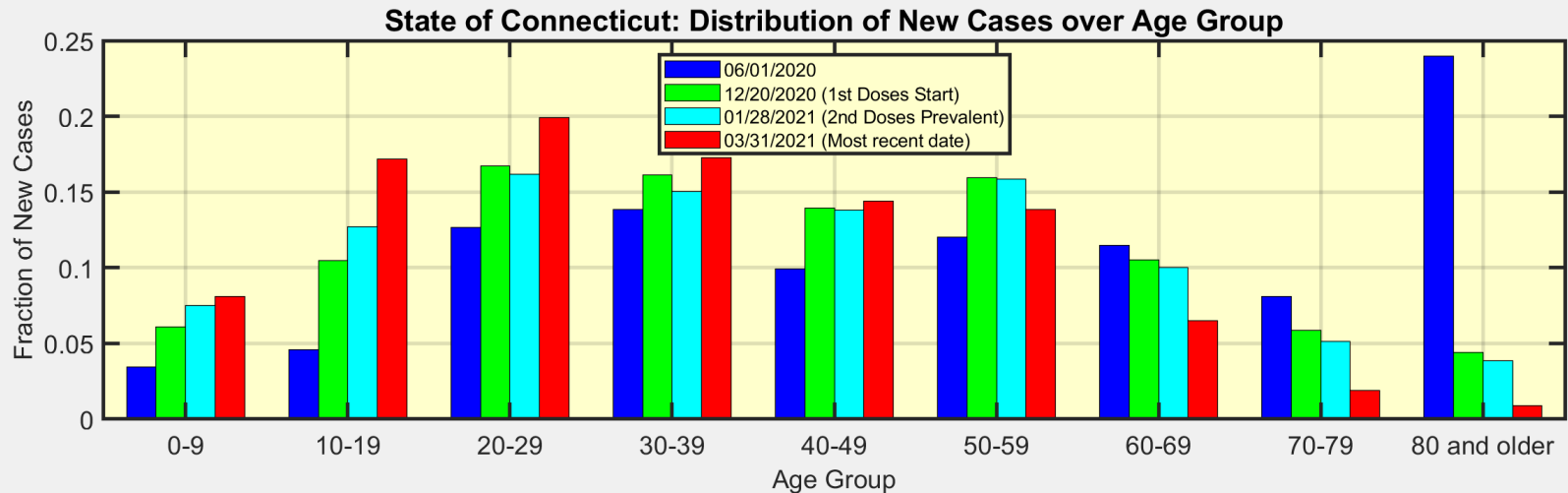
Data Source: <https://data.ct.gov>



# New Case Rates for all towns in Fairfield County



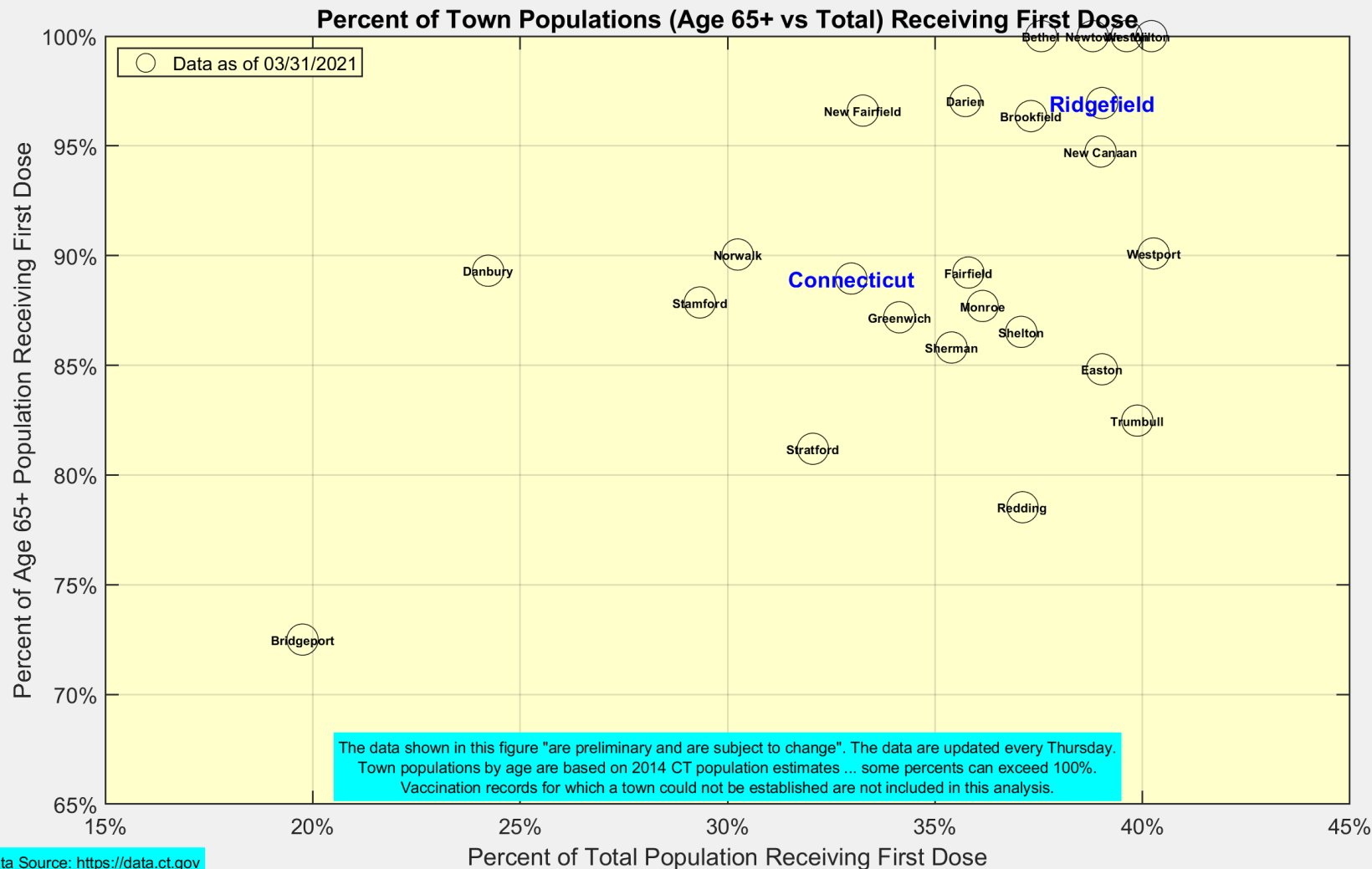
# We are seeing more cases in ages 10-39 as ages 60+ become fully vaccinated



Data Source: <https://data.ct.gov>



# Latest Vaccination Rates for Towns in Fairfield County



# Number of Ridgefield Residents Receiving First Dose (Weekly)

