

Ridgefield COVID Summary

Ridgefield COVID-19 Task Force



Data downloaded from
<https://data.ct.gov/browse?category=Health+and+Human+Services>

Data downloaded on Monday, April 19, 2021 at 4:00 PM
This reflects data through Sunday, April 18, 2021

Ridgefield Summary

Ridgefield	Sunday 04/18/2021	Thursday 04/15/2021
Number of New Cases Reported	12	4
New Case Rate (per 100,000 Residents)	21.2	20.0
New Test Rate (per 100,000 Residents)	623.3	635.3
Test Positivity	3.4%	3.2%
Fairfield County	Sunday 04/18/2021	Thursday 04/15/2021
Number of New Cases Reported	711	361
New Case Rate (per 100,000 Residents)	31.9	36.6
New Test Rate (per 100,000 Residents)	950.3	992.8
Test Positivity	3.4%	3.7%
Currently Hospitalized	150	140

Data Source: <https://data.ct.gov>. This report reflects data reported to the State through Sunday 04/18/2021.

The New Case Rate, New Test Rate, and Test Positivity are computed using 7-day moving averages.

NOTE: The Number of New Cases Reported for Sunday is the TOTAL over the last THREE DAYS (Friday, Saturday, Sunday).

Fairfield County ranks 251 (Highest 8.0%) out of 3142 US counties in New Case Rate (Per 100,000 Residents)

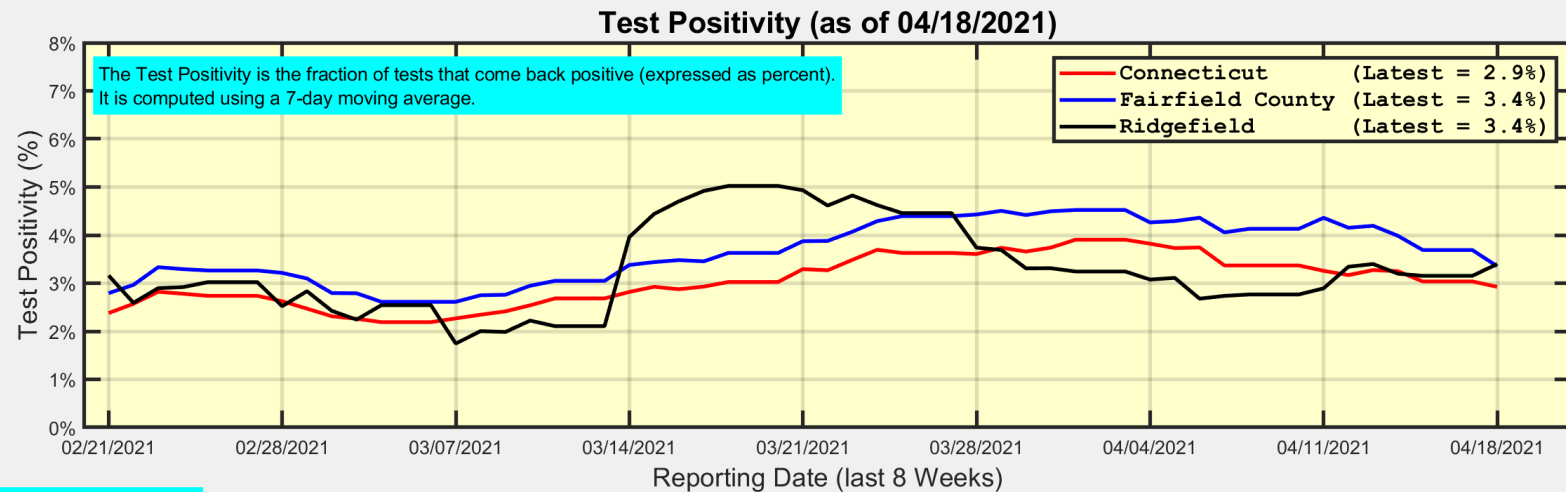
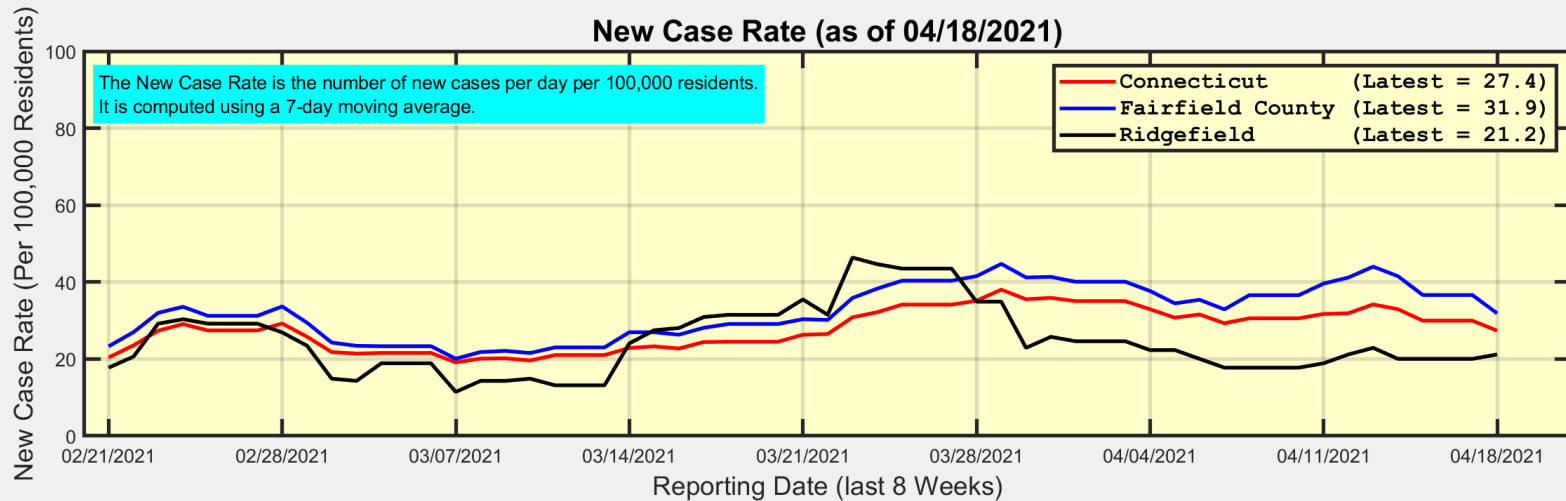
Our data science confirms CDC and other studies:

Wearing a Mask Reduces COVID Case Rates



Ridgefield COVID-19 Task Force

New Case Rates and Test Positivity for Connecticut, Fairfield County, and Ridgefield



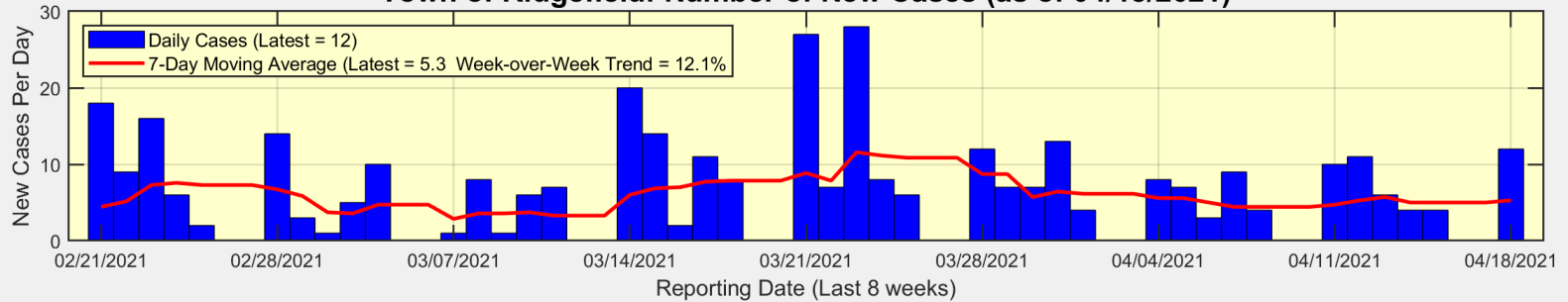
Data Source: <https://data.ct.gov>



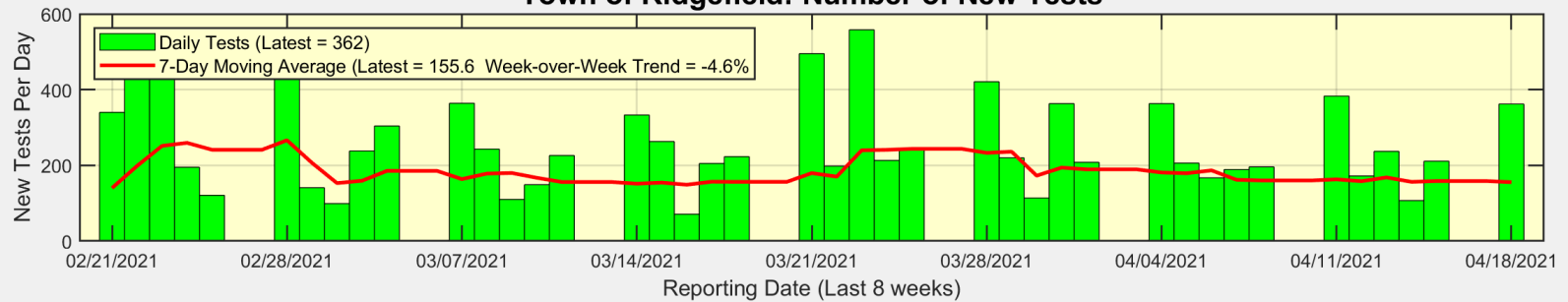
Ridgefield COVID-19 Task Force

New Cases, New Tests, and Test Positivity for Ridgefield

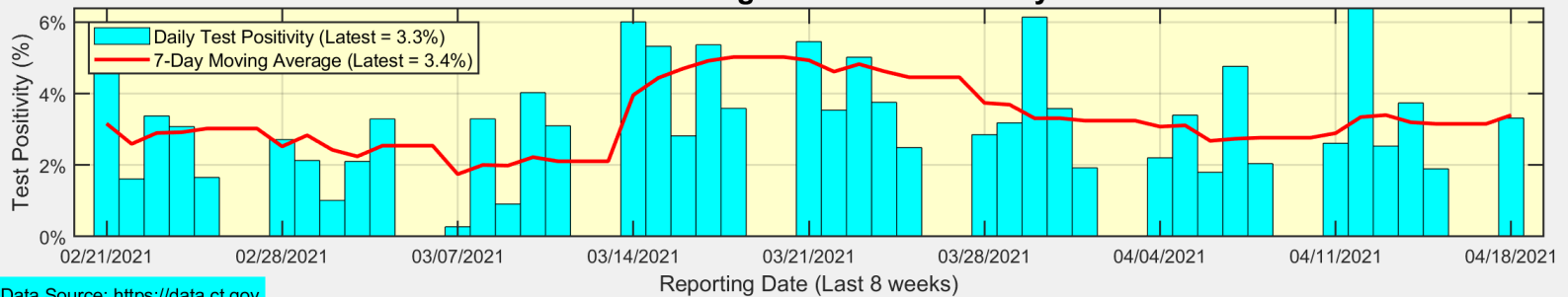
Town of Ridgefield: Number of New Cases (as of 04/18/2021)



Town of Ridgefield: Number of New Tests



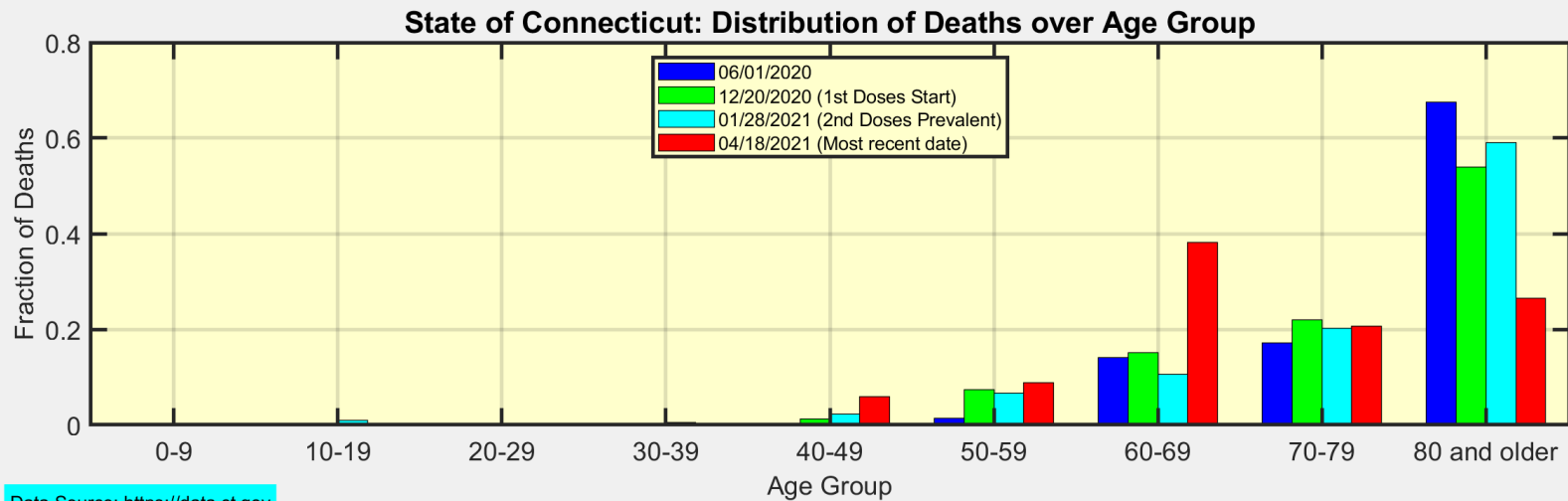
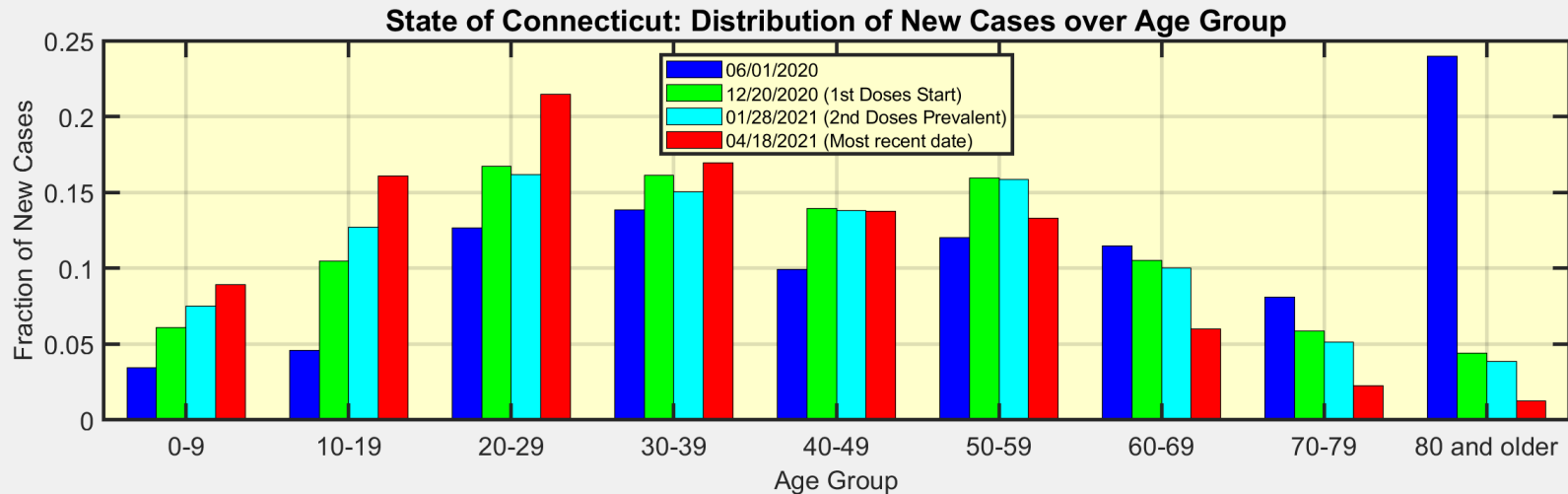
Town of Ridgefield: Test Positivity



Data Source: <https://data.ct.gov>



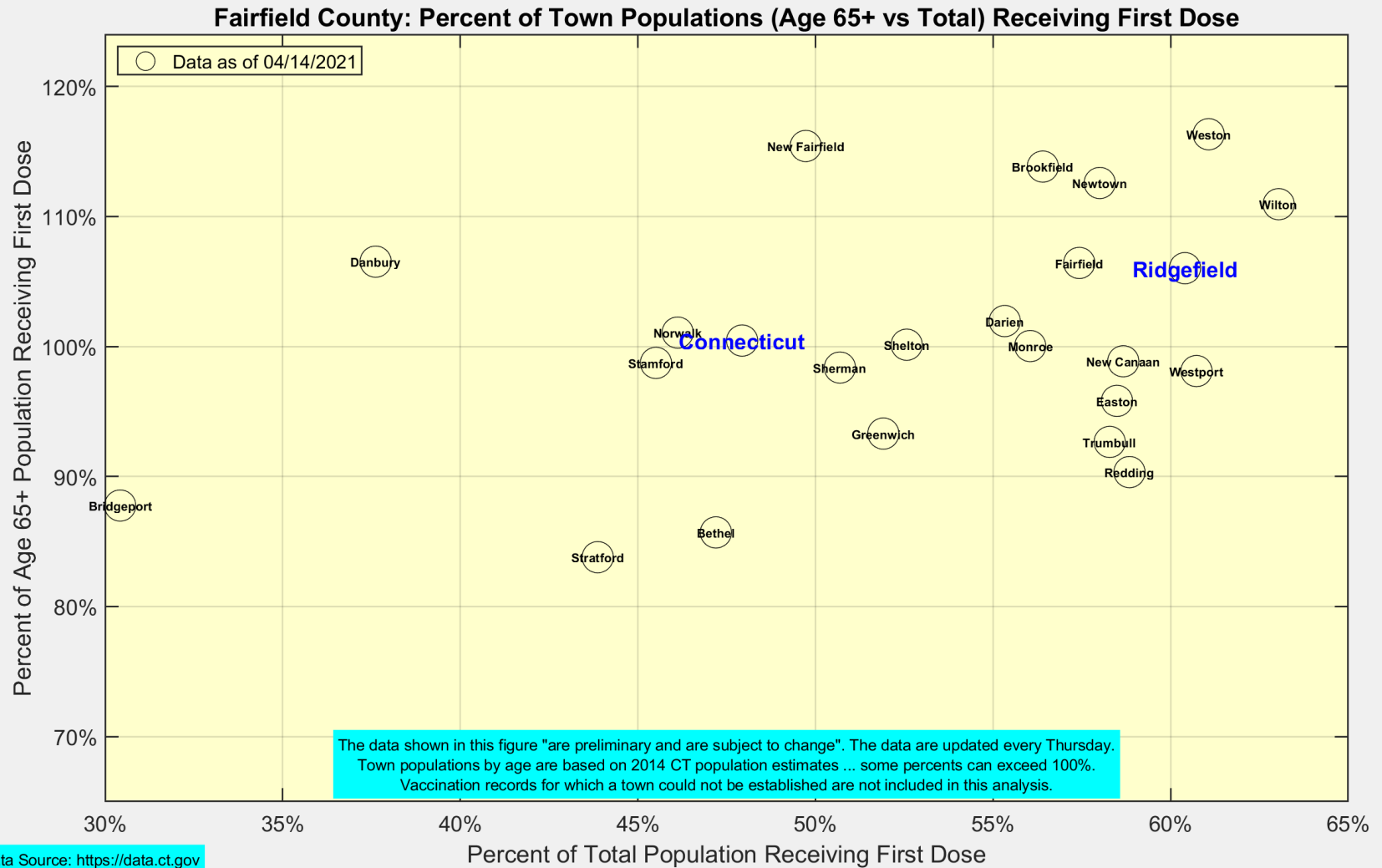
We are seeing more cases in ages 10-39 as ages 60+ become fully vaccinated



Data Source: <https://data.ct.gov>



Latest Vaccination Rates for Towns in Fairfield County



Number of Ridgefield Residents Receiving First Dose (Weekly)

