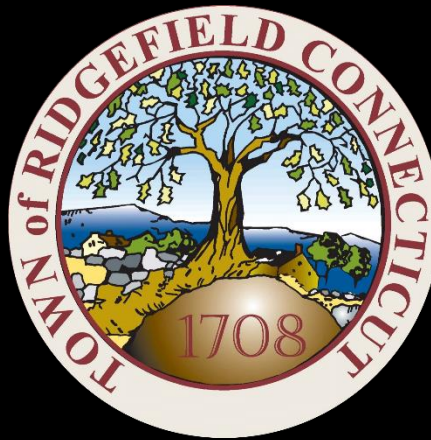


## Ridgefield COVID Summary

Ridgefield COVID-19 Task Force



Data downloaded from  
<https://data.ct.gov/browse?category=Health+and+Human+Services>

Data downloaded on Friday, April 16, 2021 at 4:00 PM  
This reflects data through Thursday, April 15, 2021

## Ridgefield Summary

Ridgefield	Thursday 04/15/2021	Wednesday 04/14/2021
Number of New Cases Reported	4	4
New Case Rate (per 100,000 Residents)	20.0	20.0
New Test Rate (per 100,000 Residents)	635.3	626.7
Test Positivity	3.2%	3.2%
Fairfield County	Thursday 04/15/2021	Wednesday 04/14/2021
Number of New Cases Reported	361	170
New Case Rate (per 100,000 Residents)	36.6	41.5
New Test Rate (per 100,000 Residents)	992.9	1042.0
Test Positivity	3.7%	4.0%
Currently Hospitalized	140	147

**Data Source: <https://data.ct.gov>. This report reflects data reported to the State through Thursday 04/15/2021. The New Case Rate, New Test Rate, and Test Positivity are computed using 7-day moving averages.**

**Fairfield County ranks 203 (Highest 6.5%) out of 3142 US counties in New Case Rate (Per 100,000 Residents)**

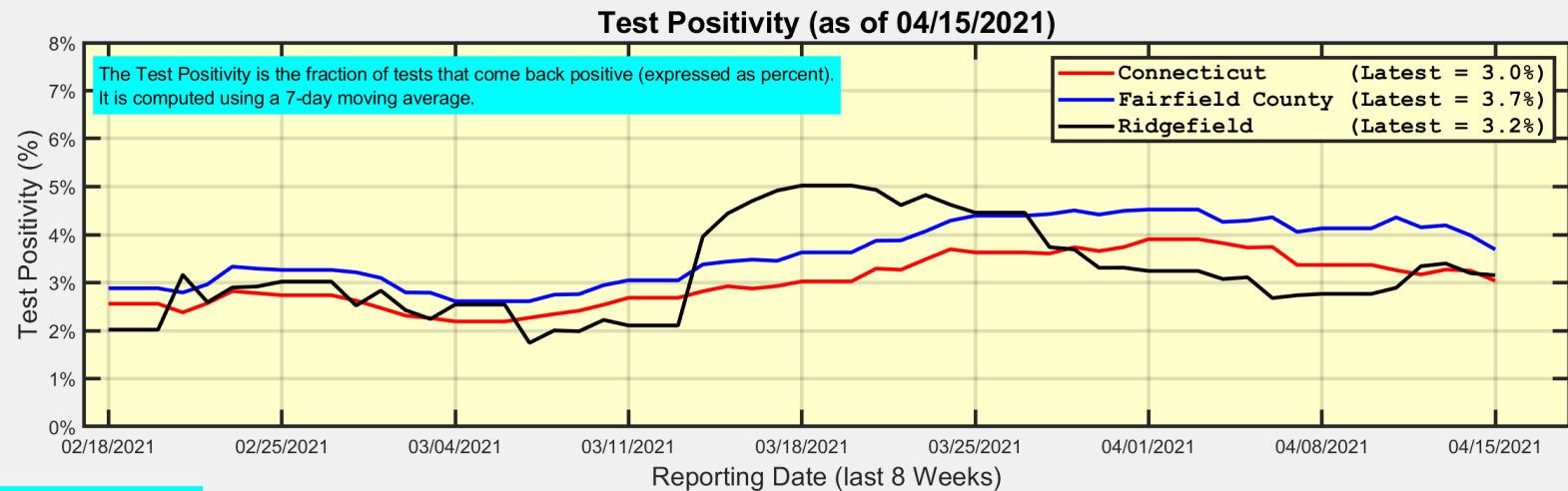
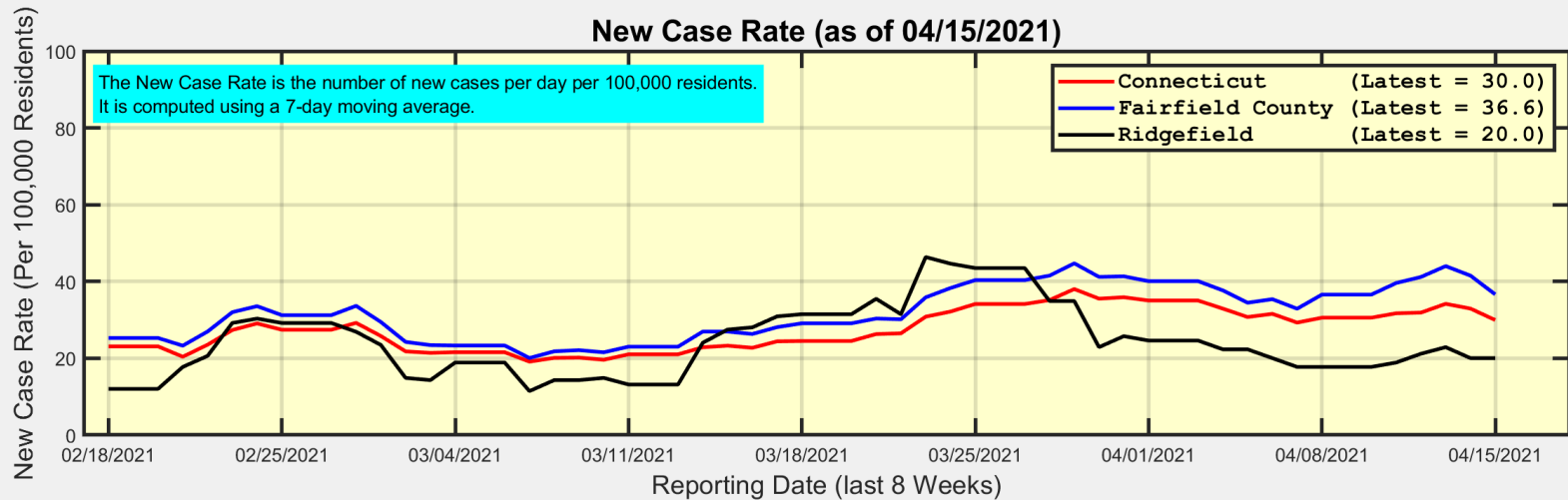
Our data science confirms CDC and other studies:

***Wearing a Mask Reduces COVID Case Rates***



Ridgefield COVID-19 Task Force

# New Case Rates and Test Positivity for Connecticut, Fairfield County, and Ridgefield



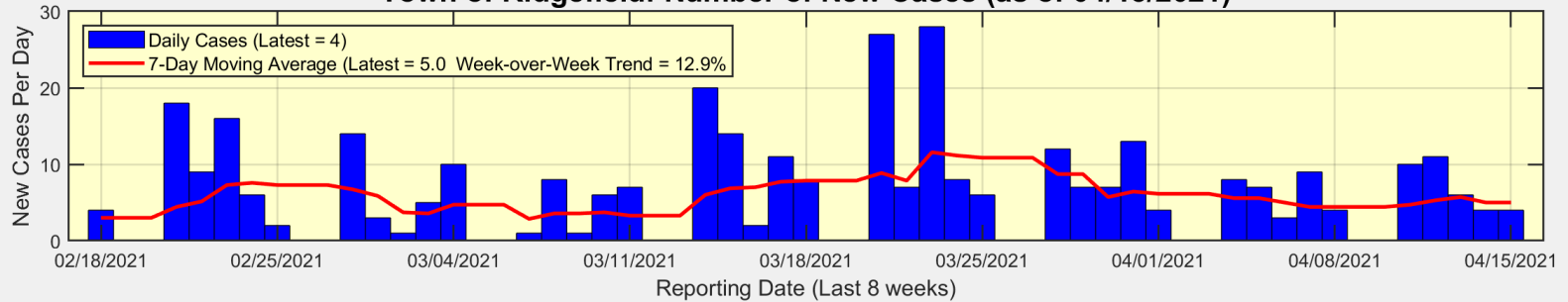
Data Source: <https://data.ct.gov>



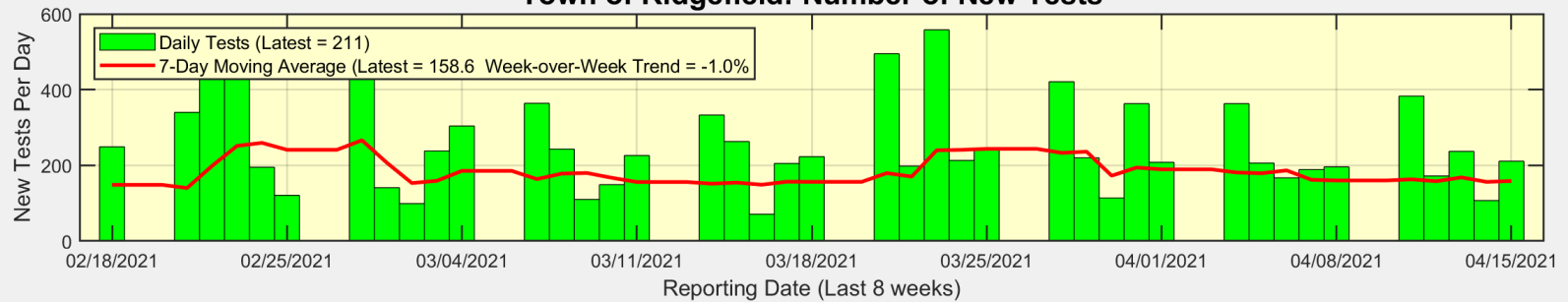
Ridgefield COVID-19 Task Force

# New Cases, New Tests, and Test Positivity for Ridgefield

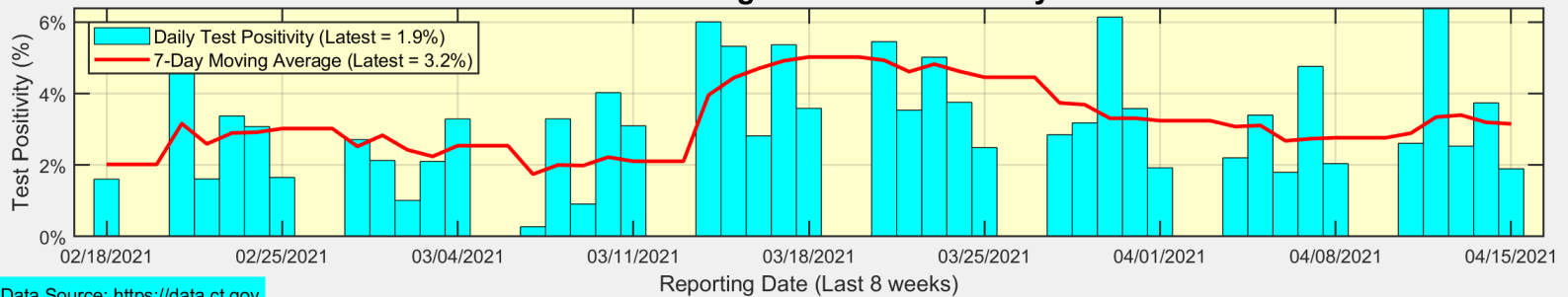
**Town of Ridgefield: Number of New Cases (as of 04/15/2021)**



**Town of Ridgefield: Number of New Tests**



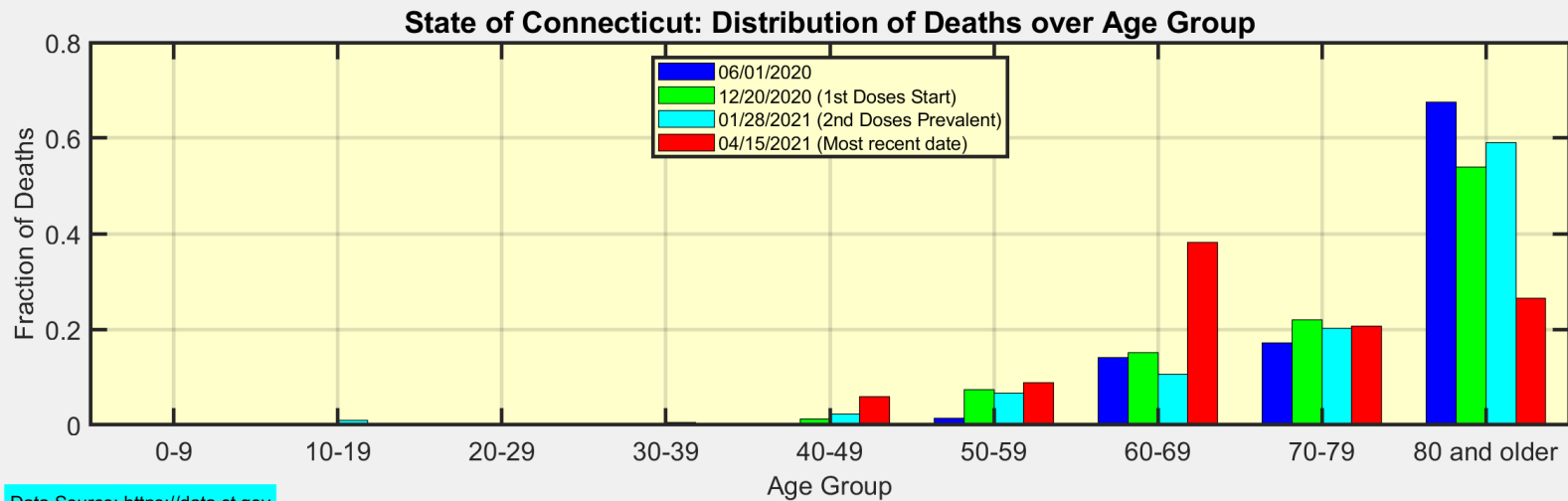
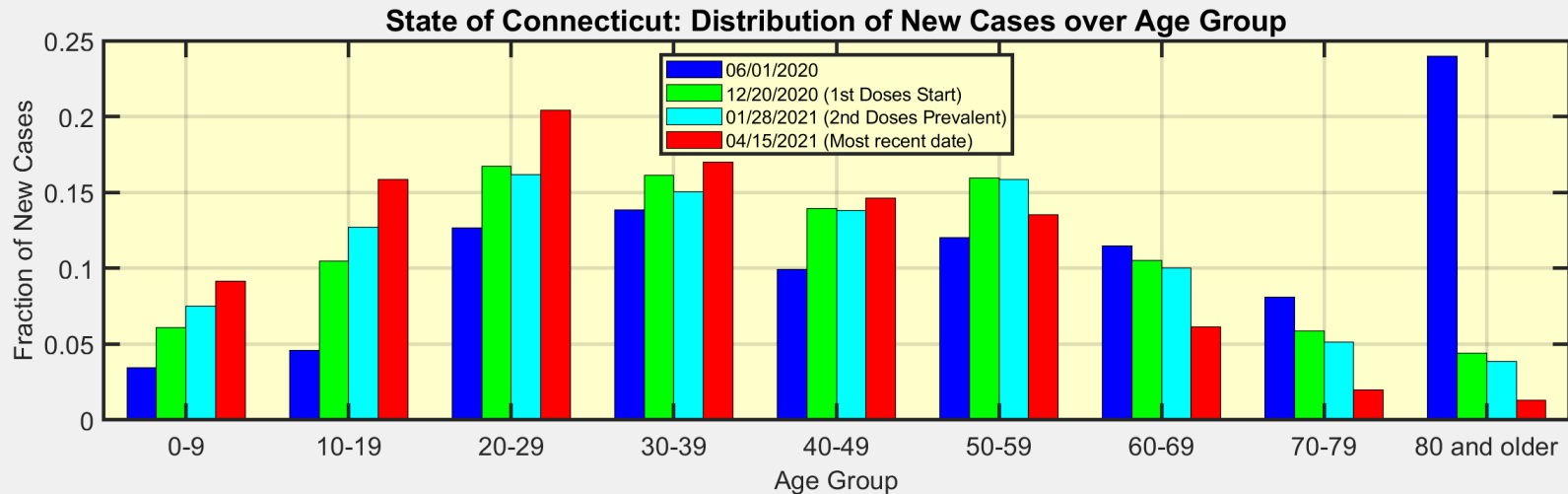
**Town of Ridgefield: Test Positivity**



Data Source: <https://data.ct.gov>



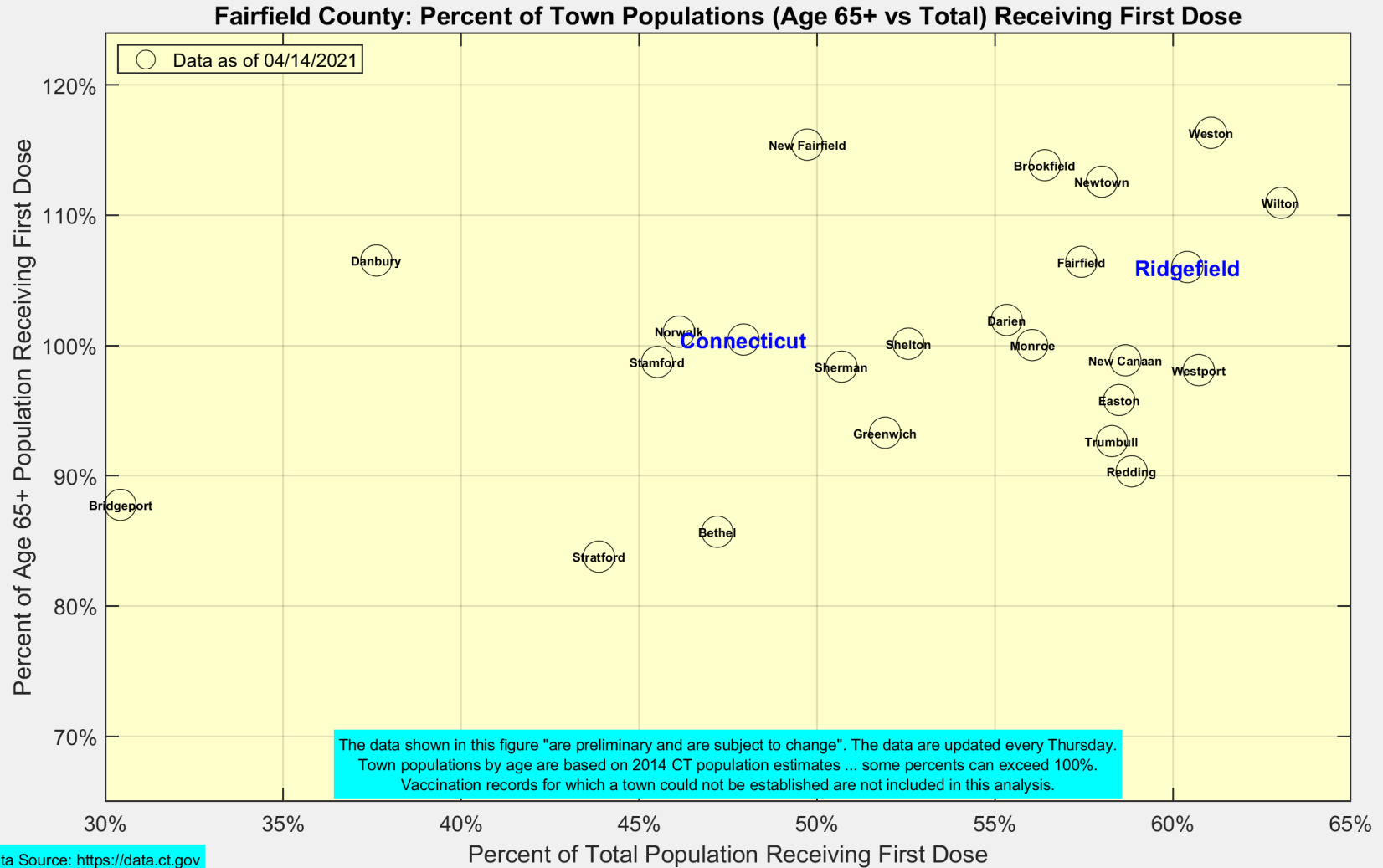
# We are seeing more cases in ages 10-39 as ages 60+ become fully vaccinated



Data Source: <https://data.ct.gov>



# Latest Vaccination Rates for Towns in Fairfield County



# Number of Ridgefield Residents Receiving First Dose (Weekly)

