

Ridgefield COVID Summary

Ridgefield COVID-19 Task Force



Data downloaded from
<https://data.ct.gov/browse?category=Health+and+Human+Services>

Data downloaded on Thursday, April 15, 2021 at 4:00 PM
This reflects data through Wednesday, April 14, 2021

Ridgefield Summary

Ridgefield	Wednesday 04/14/2021	Tuesday 04/13/2021
Number of New Cases Reported	4	6
New Case Rate (per 100,000 Residents)	20.0	22.9
New Test Rate (per 100,000 Residents)	626.7	673.7
Test Positivity	3.2%	3.4%
Fairfield County	Wednesday 04/14/2021	Tuesday 04/13/2021
Number of New Cases Reported	170	500
New Case Rate (per 100,000 Residents)	41.5	44.0
New Test Rate (per 100,000 Residents)	1042.1	1049.5
Test Positivity	4.0%	4.2%
Currently Hospitalized	147	152
Data Source: https://data.ct.gov. This report reflects data reported to the State through Wednesday 04/14/2021. The New Case Rate, New Test Rate, and Test Positivity are computed using 7-day moving averages.		

Fairfield County ranks 180 (Highest 5.7%) out of 3142 US counties in New Case Rate (Per 100,000 Residents))

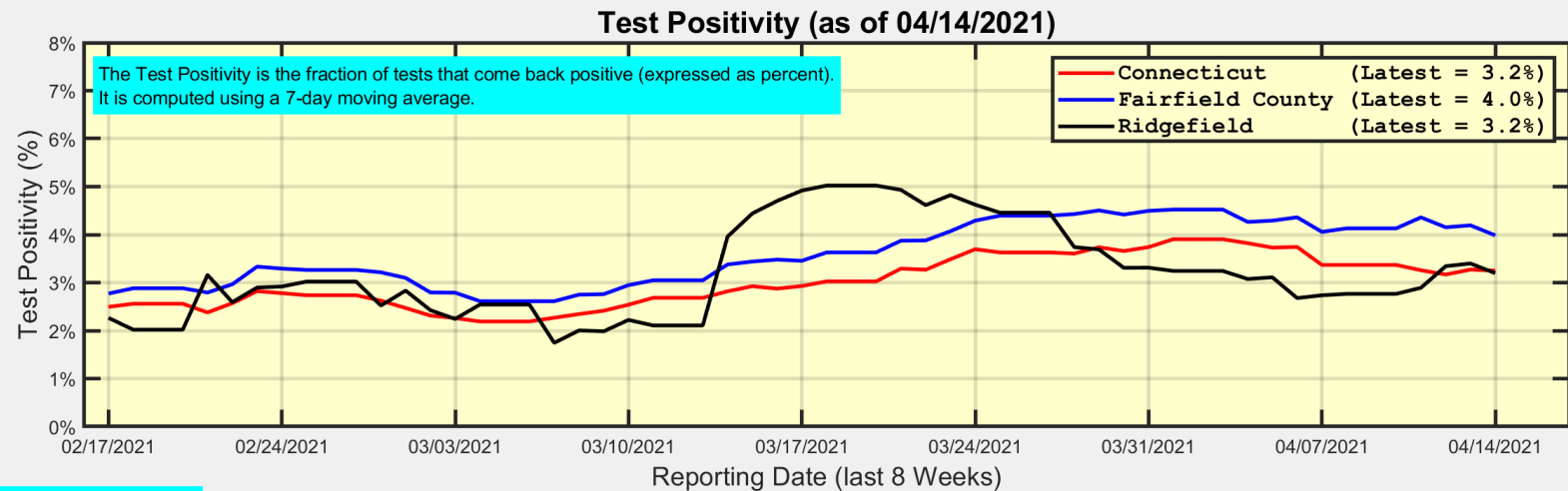
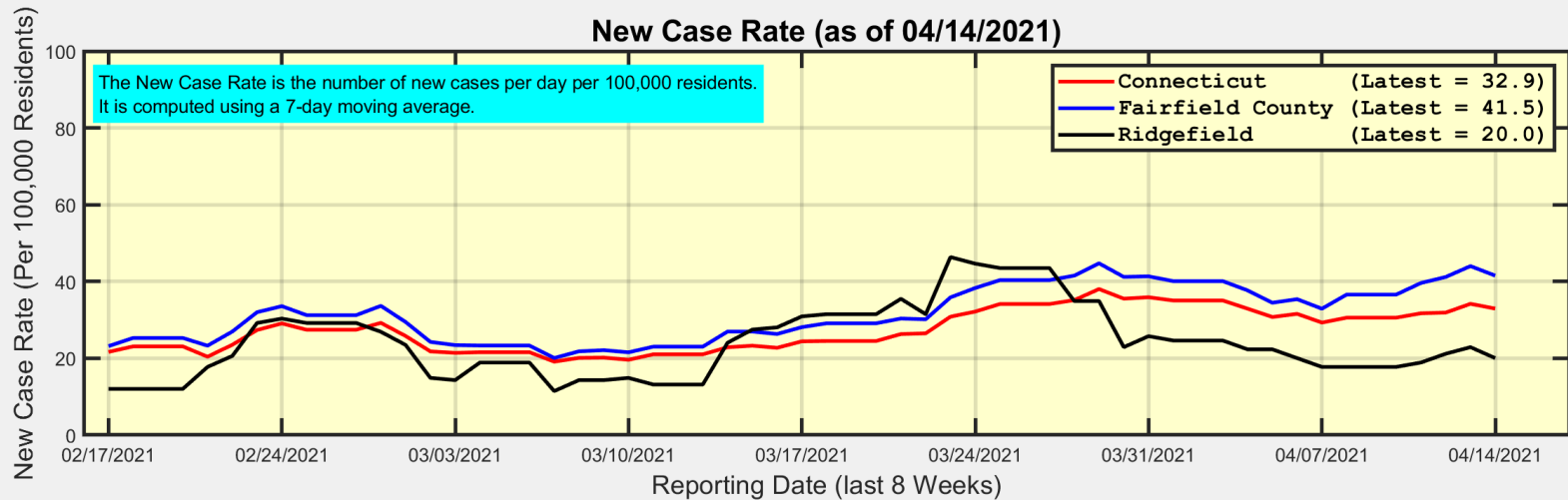
Our data science confirms CDC and other studies:

Wearing a Mask Reduces COVID Case Rates



Ridgefield COVID-19 Task Force

New Case Rates and Test Positivity for Connecticut, Fairfield County, and Ridgefield

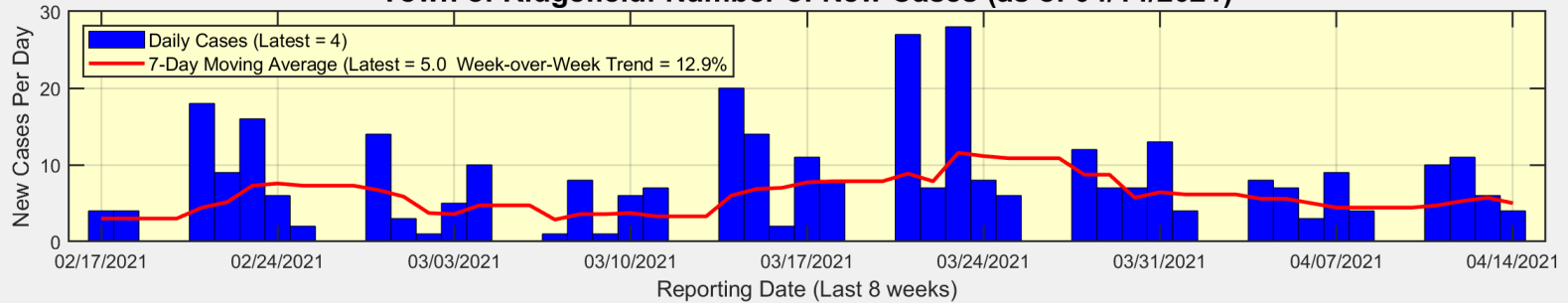


Data Source: <https://data.ct.gov>

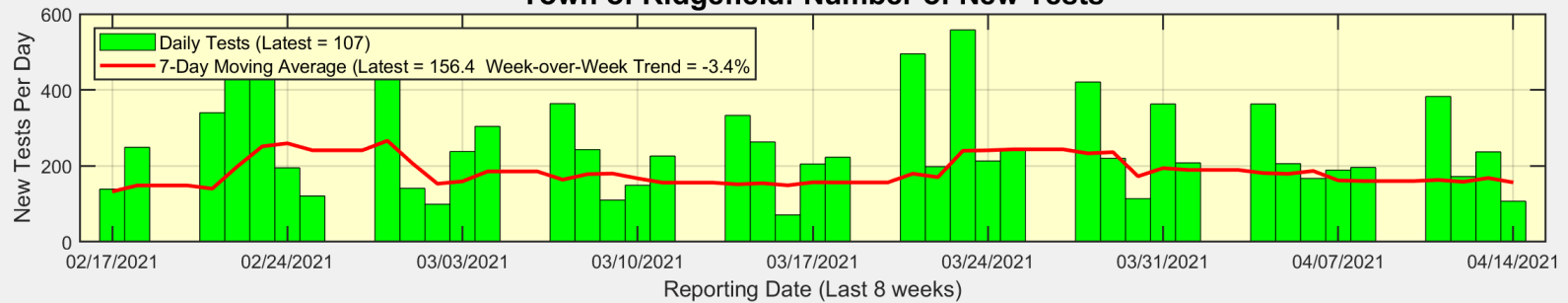


New Cases, New Tests, and Test Positivity for Ridgefield

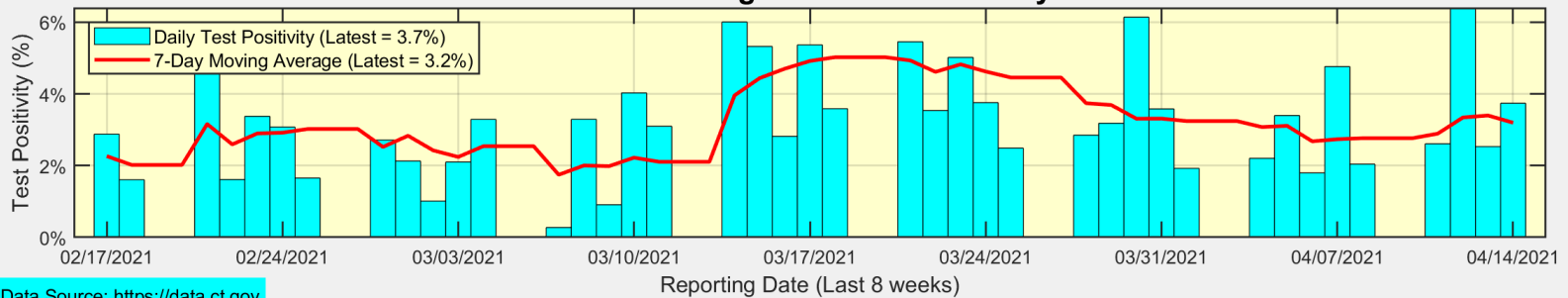
Town of Ridgefield: Number of New Cases (as of 04/14/2021)



Town of Ridgefield: Number of New Tests



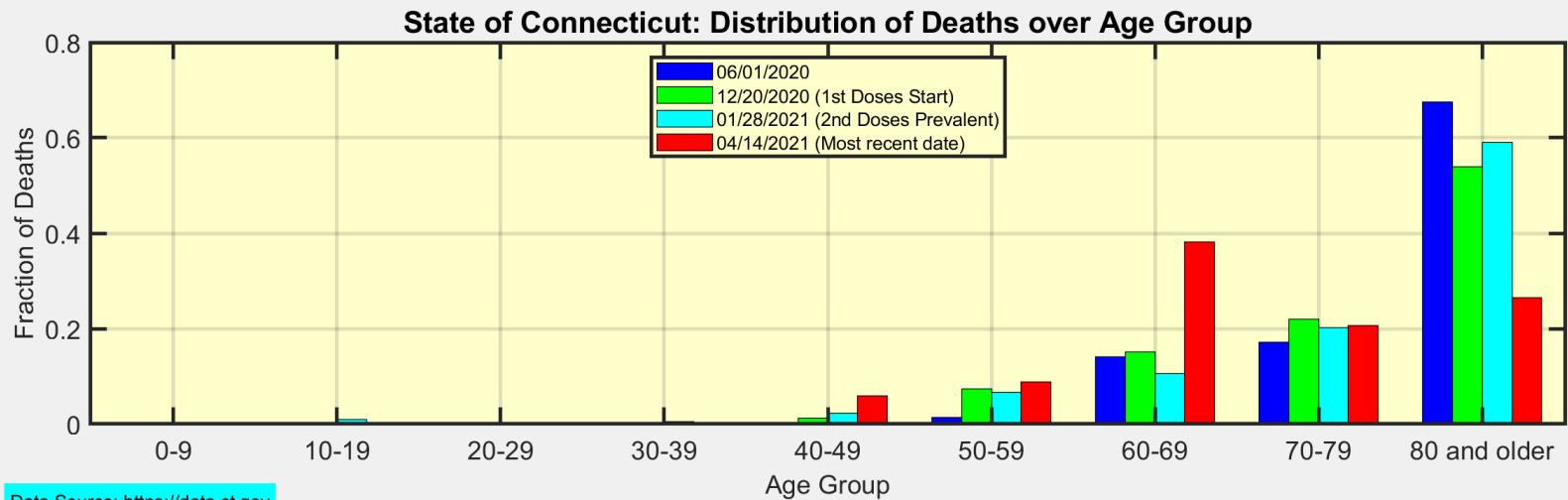
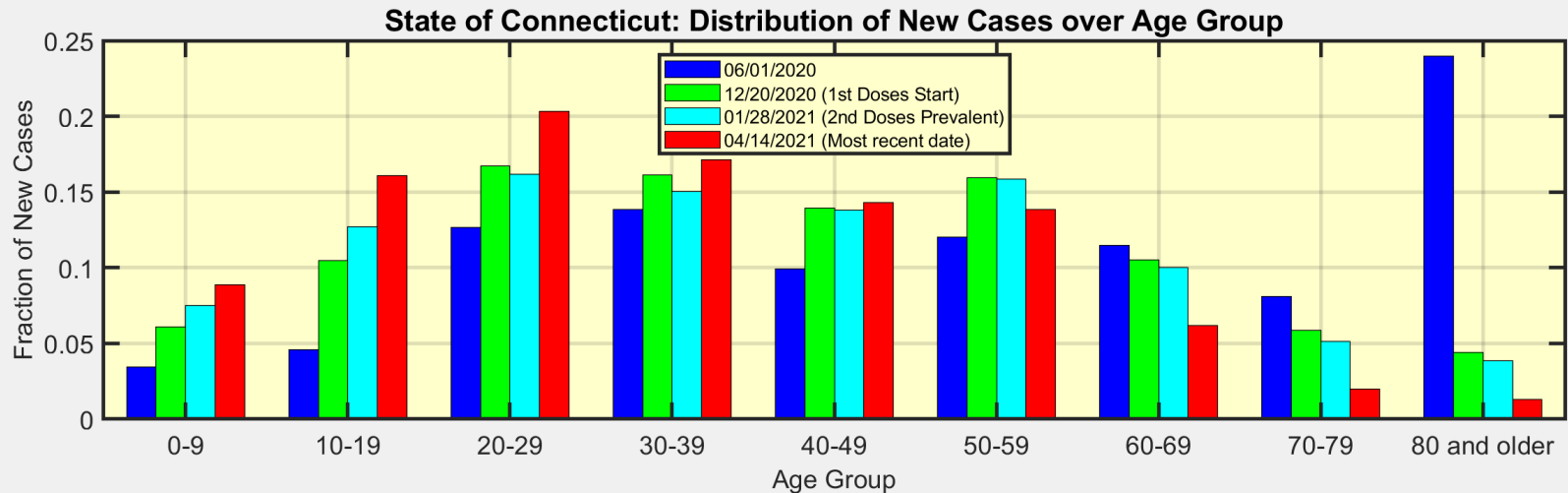
Town of Ridgefield: Test Positivity



Data Source: <https://data.ct.gov>



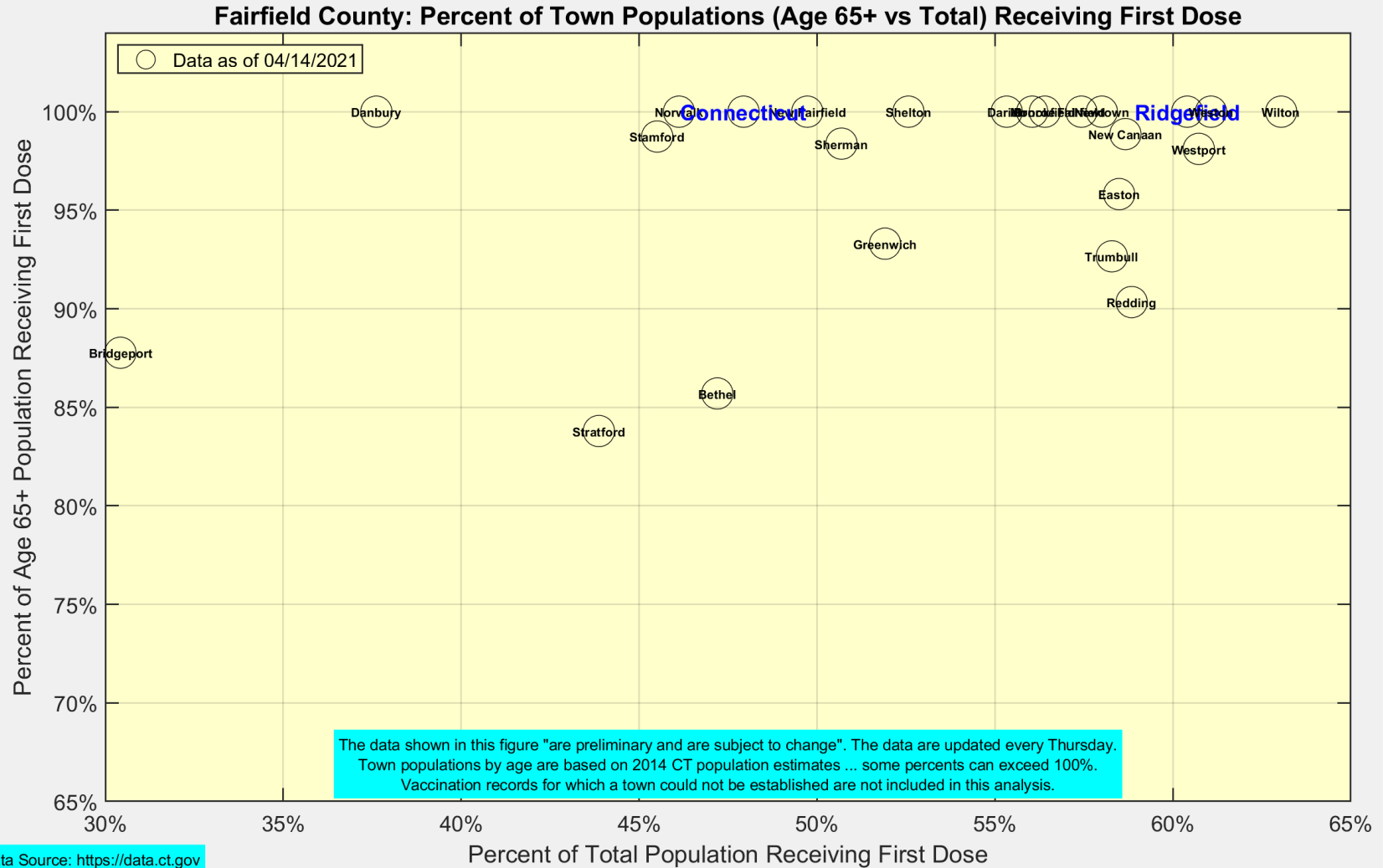
We are seeing more cases in ages 10-39 as ages 60+ become fully vaccinated



Data Source: <https://data.ct.gov>



Latest Vaccination Rates for Towns in Fairfield County



Number of Ridgefield Residents Receiving First Dose (Weekly)

