

Ridgefield COVID Summary

Ridgefield COVID-19 Task Force



Data downloaded from
<https://data.ct.gov/browse?category=Health+and+Human+Services>

Data downloaded on Wednesday, April 14, 2021 at 4:00 PM
This reflects data through Tuesday, April 13, 2021

Ridgefield Summary

Ridgefield	Tuesday 04/13/2021	Monday 04/12/2021
Number of New Cases Reported	6	11
New Case Rate (per 100,000 Residents)	22.9	21.2
New Test Rate (per 100,000 Residents)	673.7	633.6
Test Positivity	3.4%	3.3%
Fairfield County	Tuesday 04/13/2021	Monday 04/12/2021
Number of New Cases Reported	500	362
New Case Rate (per 100,000 Residents)	44.0	41.2
New Test Rate (per 100,000 Residents)	1049.5	991.6
Test Positivity	4.2%	4.2%
Currently Hospitalized	152	156

Data Source: <https://data.ct.gov>. This report reflects data reported to the State through Tuesday 04/13/2021. The New Case Rate, New Test Rate, and Test Positivity are computed using 7-day moving averages.

Fairfield County ranks 202 (Highest 6.4%) out of 3142 US counties in New Case Rate (Per 100,000 Residents)

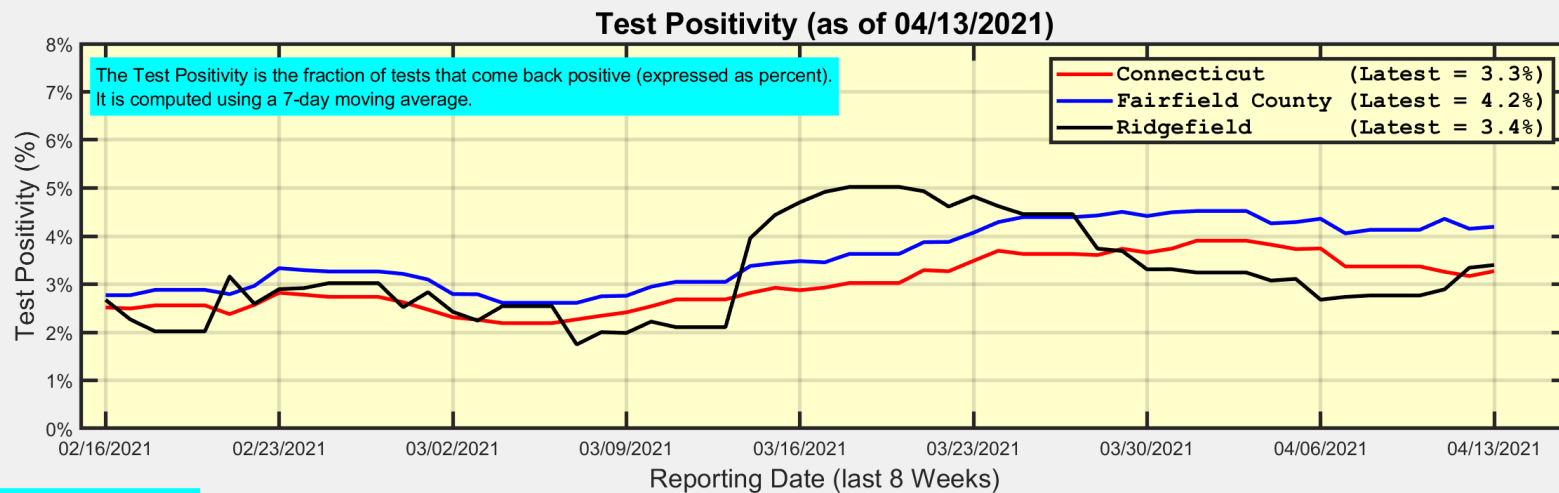
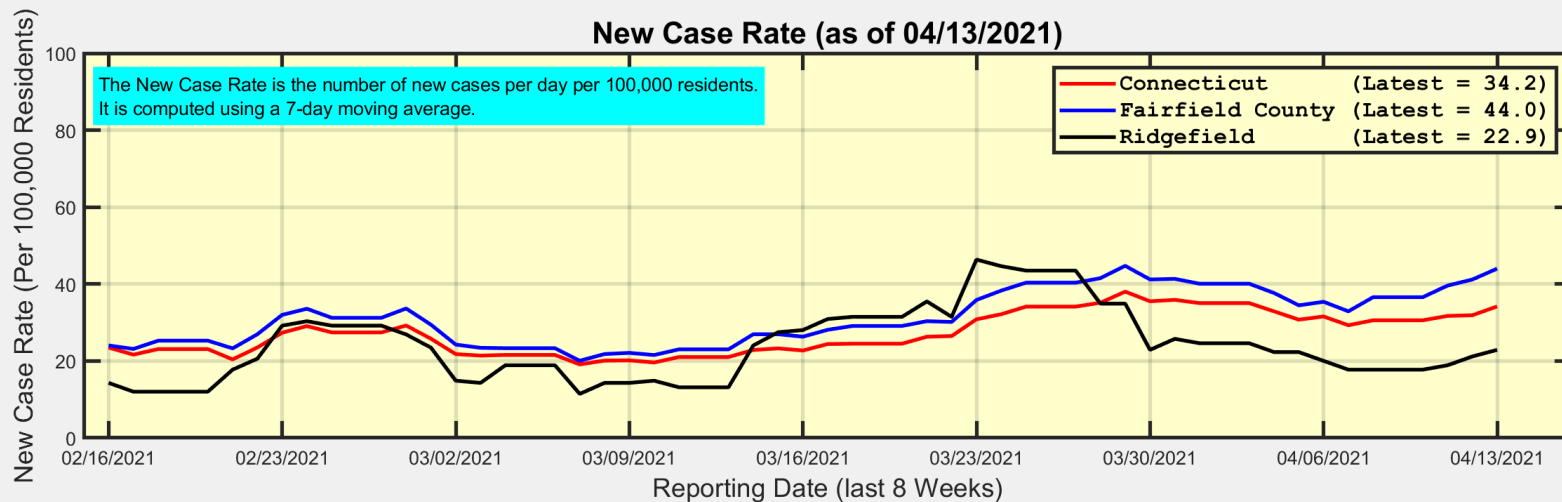
Our data science confirms CDC and other studies:

Wearing a Mask Reduces COVID Case Rates



Ridgefield COVID-19 Task Force

New Case Rates and Test Positivity for Connecticut, Fairfield County, and Ridgefield

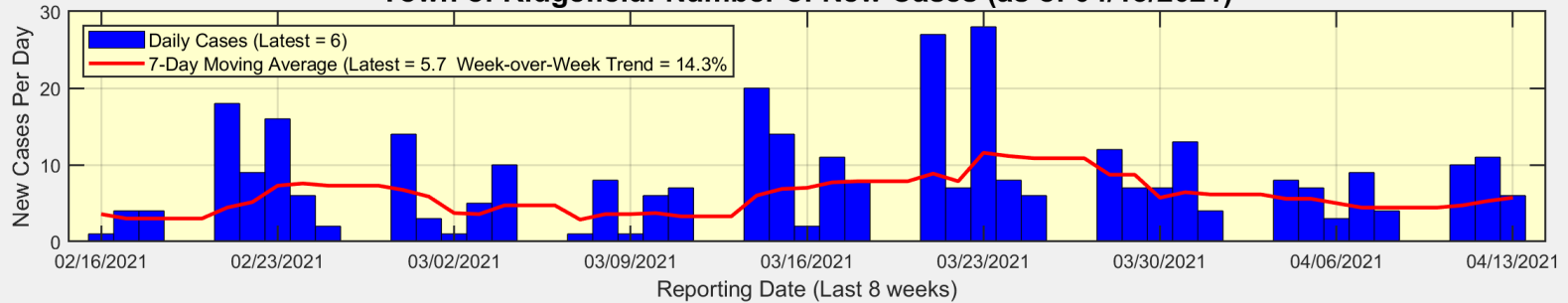


Data Source: <https://data.ct.gov>

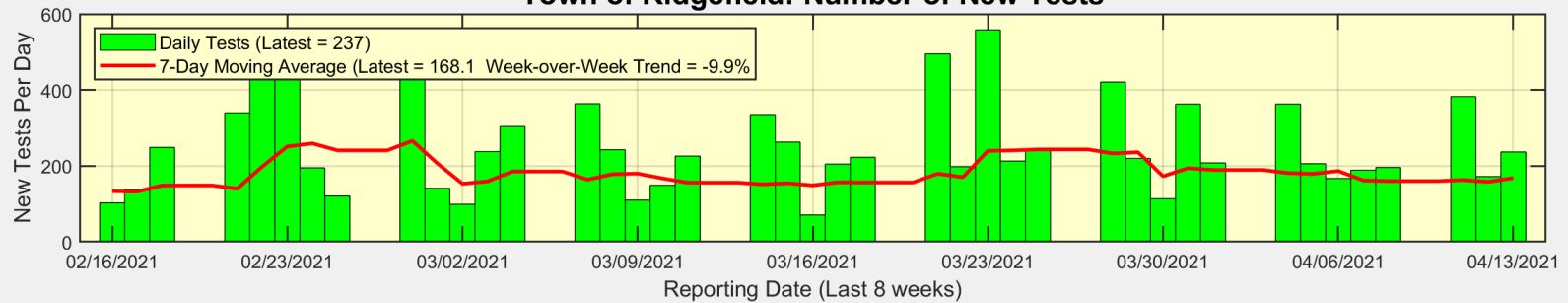


New Cases, New Tests, and Test Positivity for Ridgefield

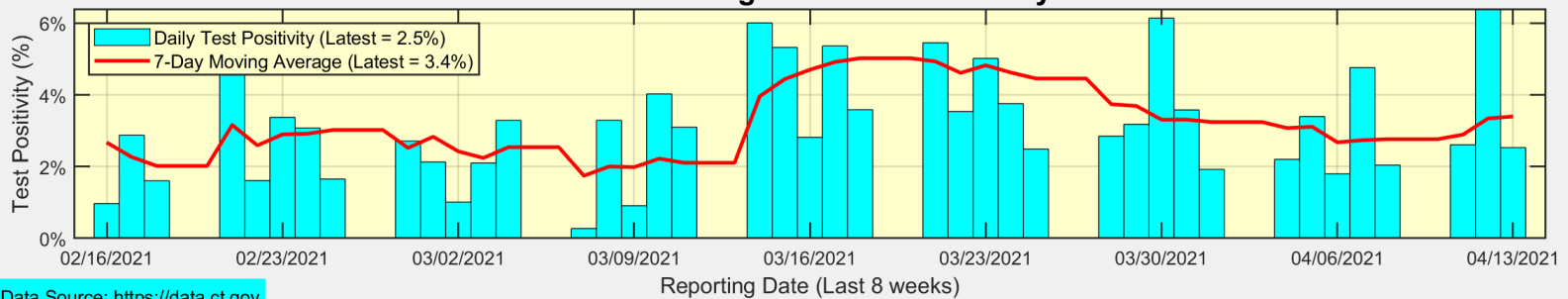
Town of Ridgefield: Number of New Cases (as of 04/13/2021)



Town of Ridgefield: Number of New Tests



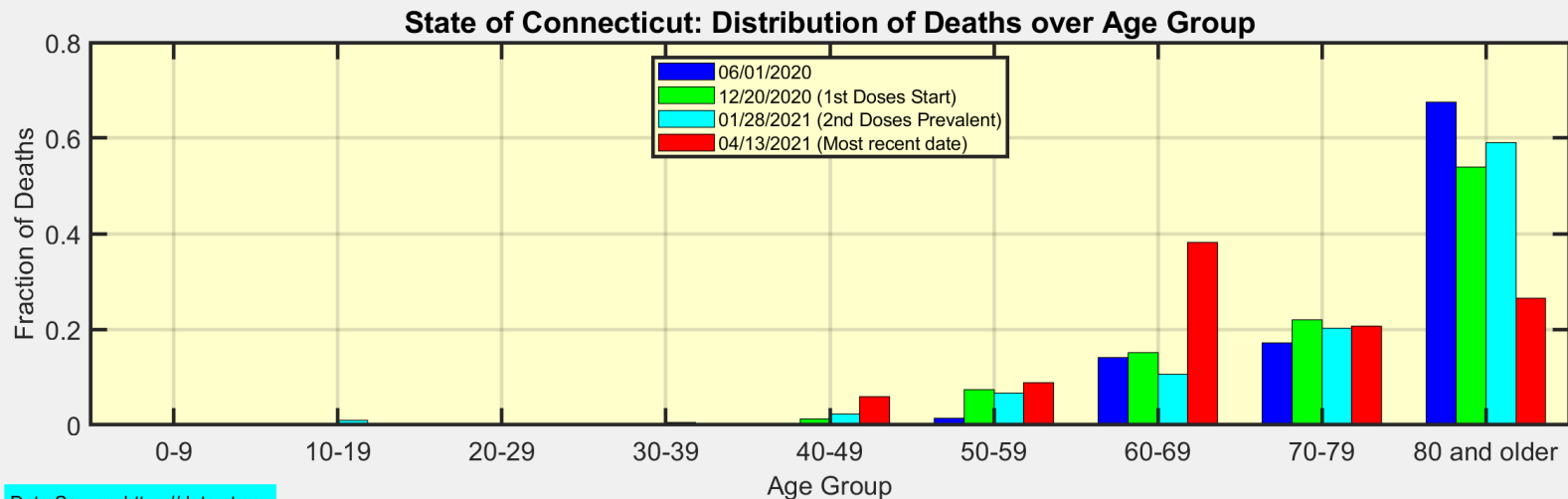
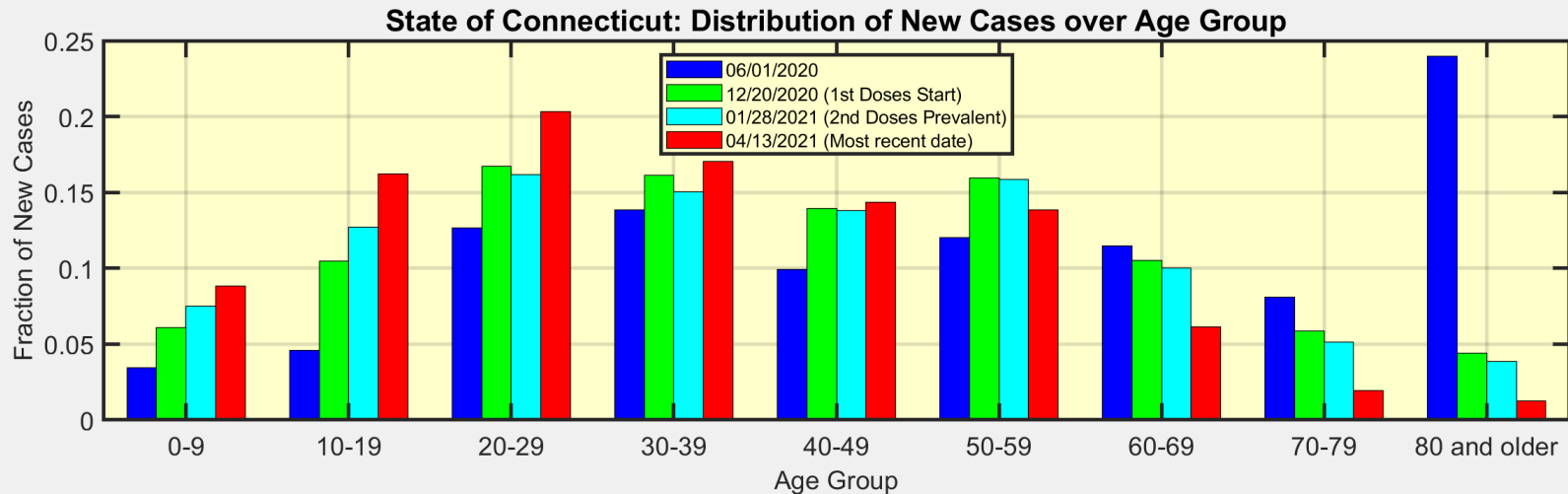
Town of Ridgefield: Test Positivity



Data Source: <https://data.ct.gov>



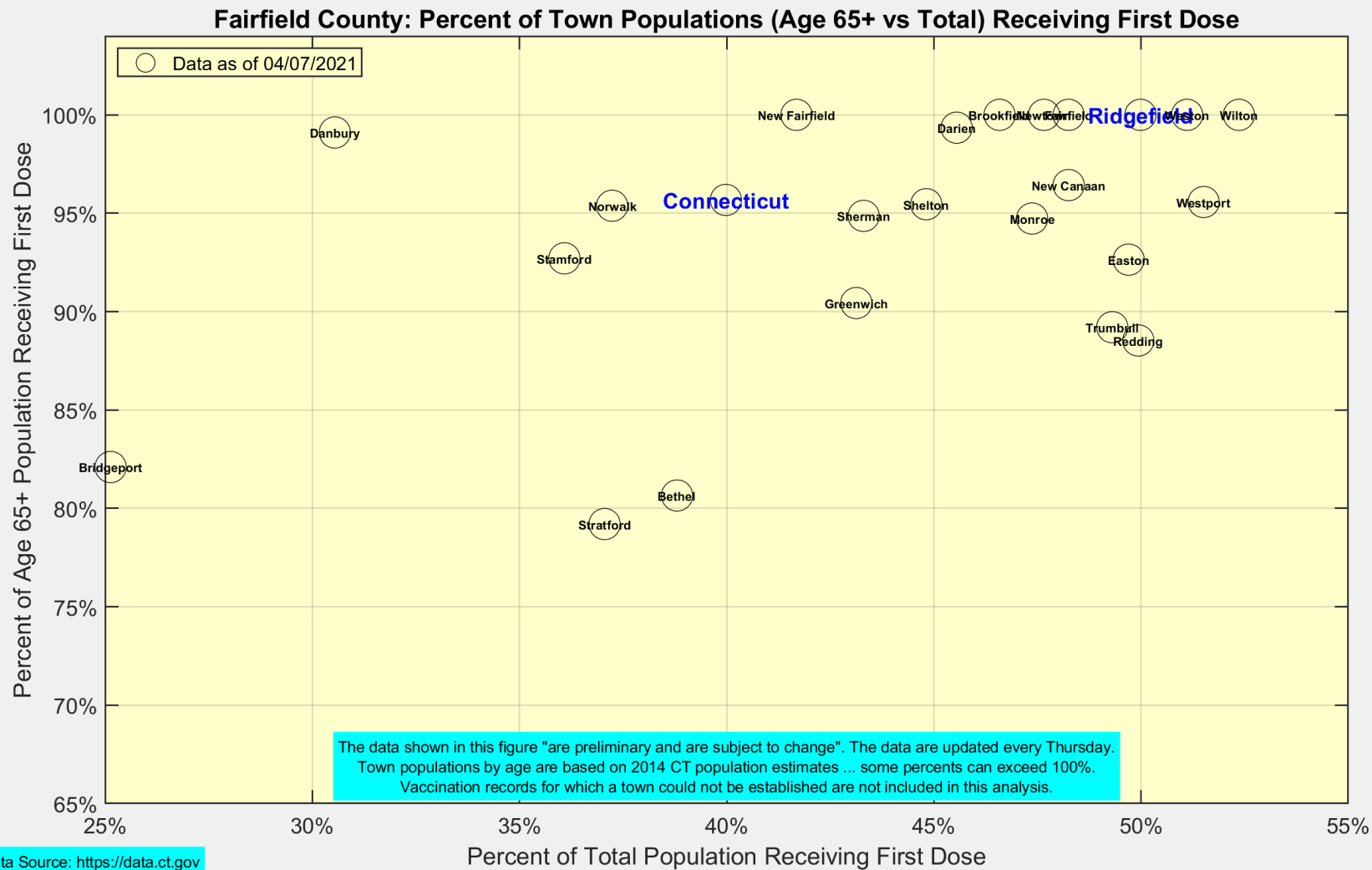
We are seeing more cases in ages 10-39 as ages 60+ become fully vaccinated



Data Source: <https://data.ct.gov>



Latest Vaccination Rates for Towns in Fairfield County



Number of Ridgefield Residents Receiving First Dose (Weekly)

