

Ridgefield COVID Summary

Ridgefield COVID-19 Task Force



Data downloaded from
<https://data.ct.gov/browse?category=Health+and+Human+Services>

Data downloaded on Tuesday, April 13, 2021 at 4:00 PM
This reflects data through Monday, April 12, 2021

Ridgefield Summary

Ridgefield	Monday 04/12/2021	Sunday 04/11/2021
Number of New Cases Reported	11	10
New Case Rate (per 100,000 Residents)	21.2	18.9
New Test Rate (per 100,000 Residents)	633.6	653.1
Test Positivity	3.3%	2.9%
Fairfield County	Monday 04/12/2021	Sunday 04/11/2021
Number of New Cases Reported	362	1026
New Case Rate (per 100,000 Residents)	41.2	39.6
New Test Rate (per 100,000 Residents)	991.6	908.4
Test Positivity	4.2%	4.4%
Currently Hospitalized	156	146

Data Source: <https://data.ct.gov>. This report reflects data reported to the State through Monday 04/12/2021.

The New Case Rate, New Test Rate, and Test Positivity are computed using 7-day moving averages.

NOTE: The Number of New Cases Reported for Sunday is the TOTAL over the last THREE DAYS (Friday, Saturday, Sunday).

Fairfield County ranks 217 (Highest 6.9%) out of 3142 US counties in New Case Rate (Per 100,000 Residents)

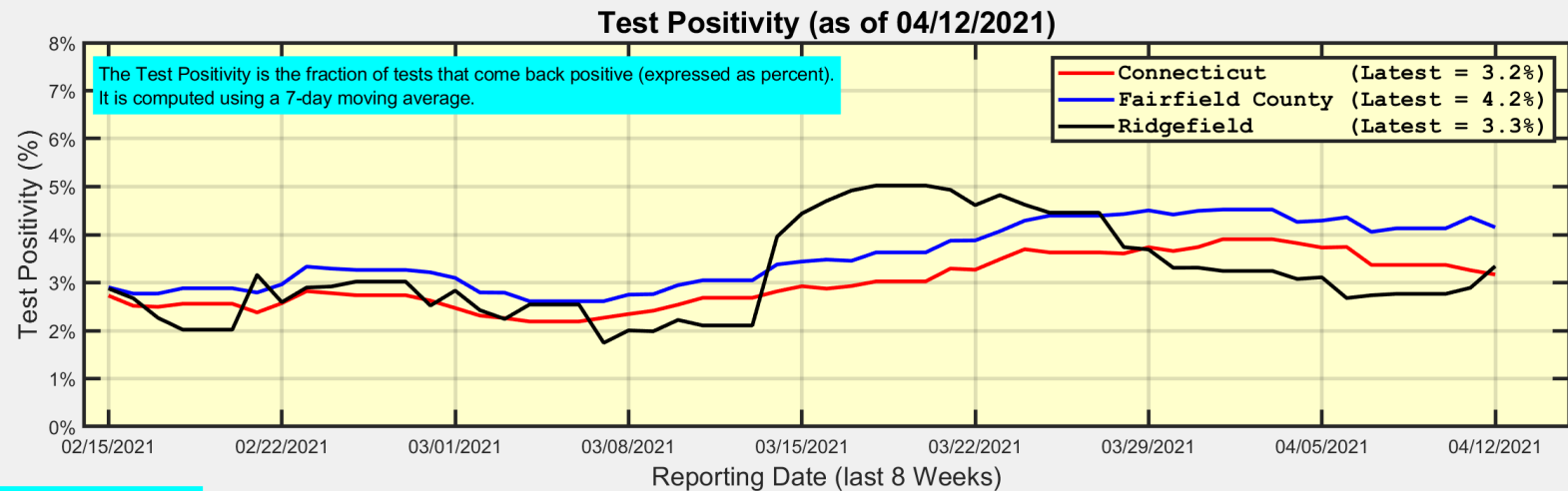
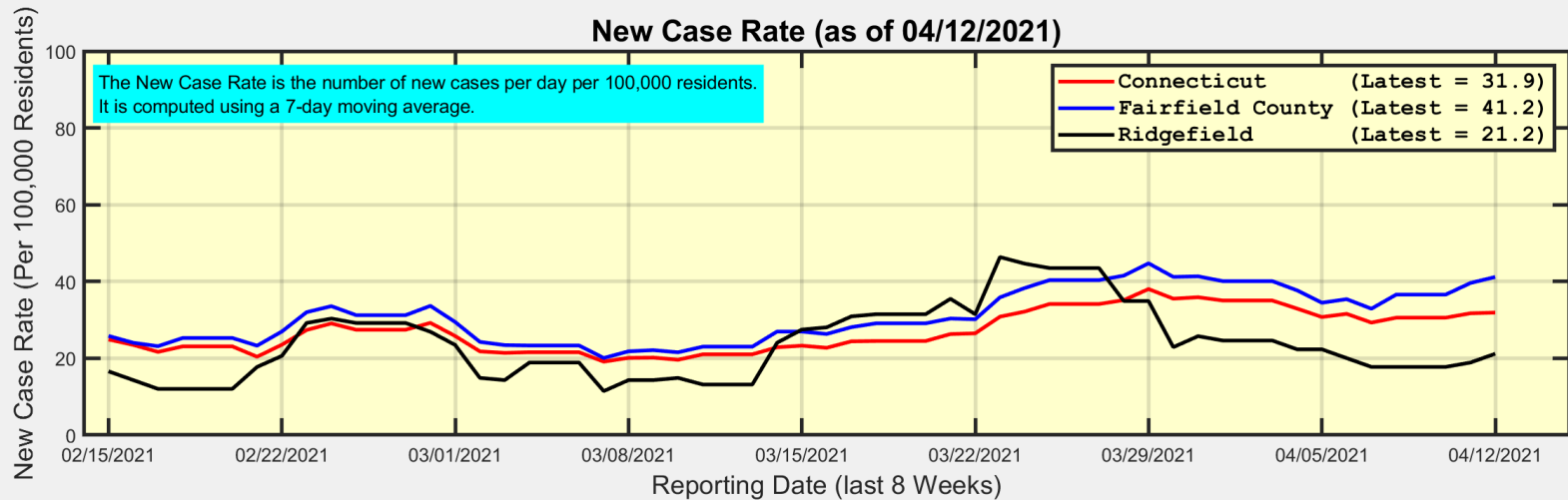
Our data science confirms CDC and other studies:

Wearing a Mask Reduces COVID Case Rates



Ridgefield COVID-19 Task Force

New Case Rates and Test Positivity for Connecticut, Fairfield County, and Ridgefield



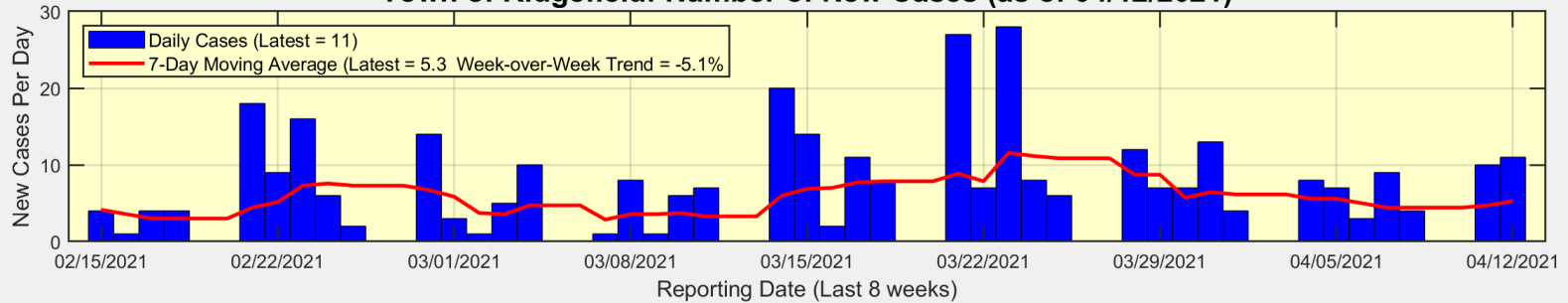
Data Source: <https://data.ct.gov>



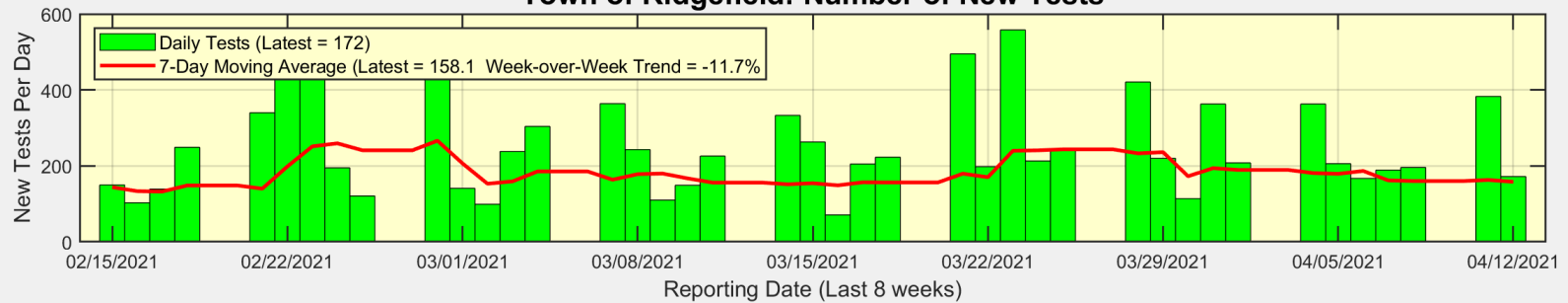
Ridgefield COVID-19 Task Force

New Cases, New Tests, and Test Positivity for Ridgefield

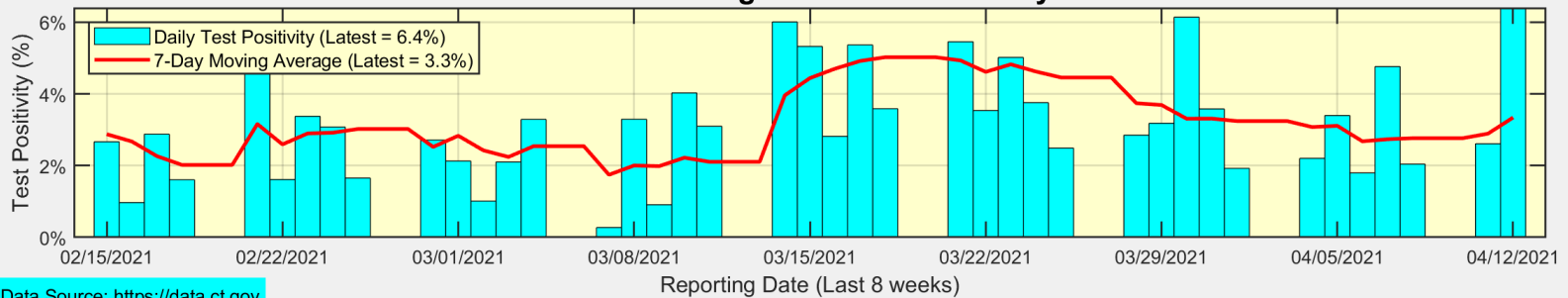
Town of Ridgefield: Number of New Cases (as of 04/12/2021)



Town of Ridgefield: Number of New Tests



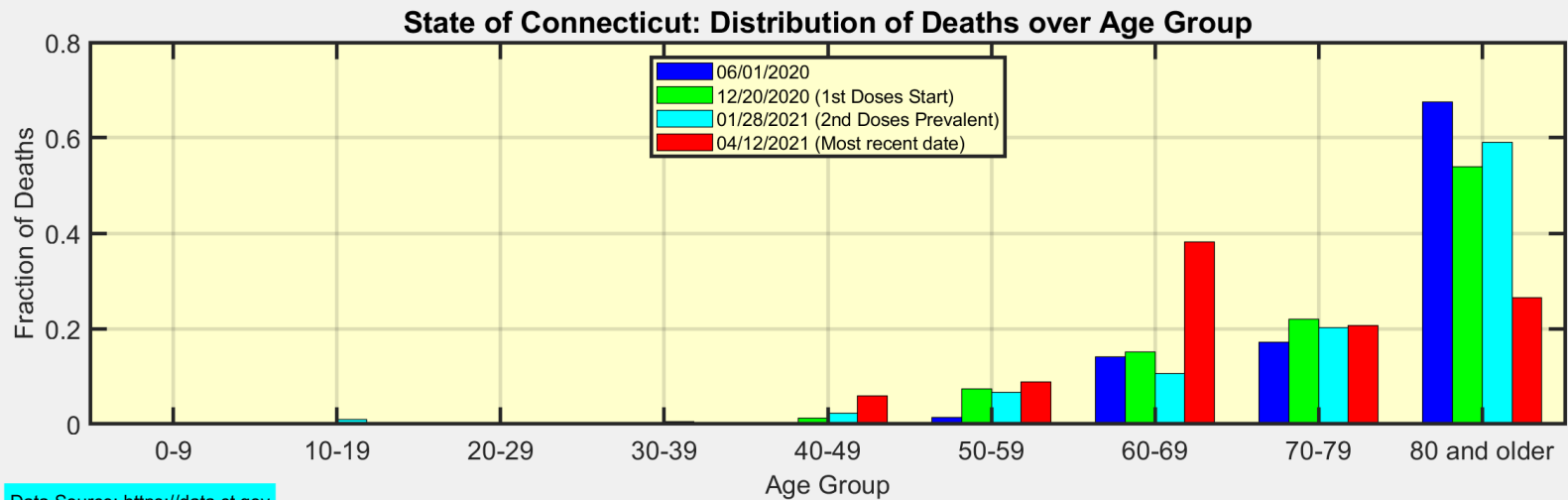
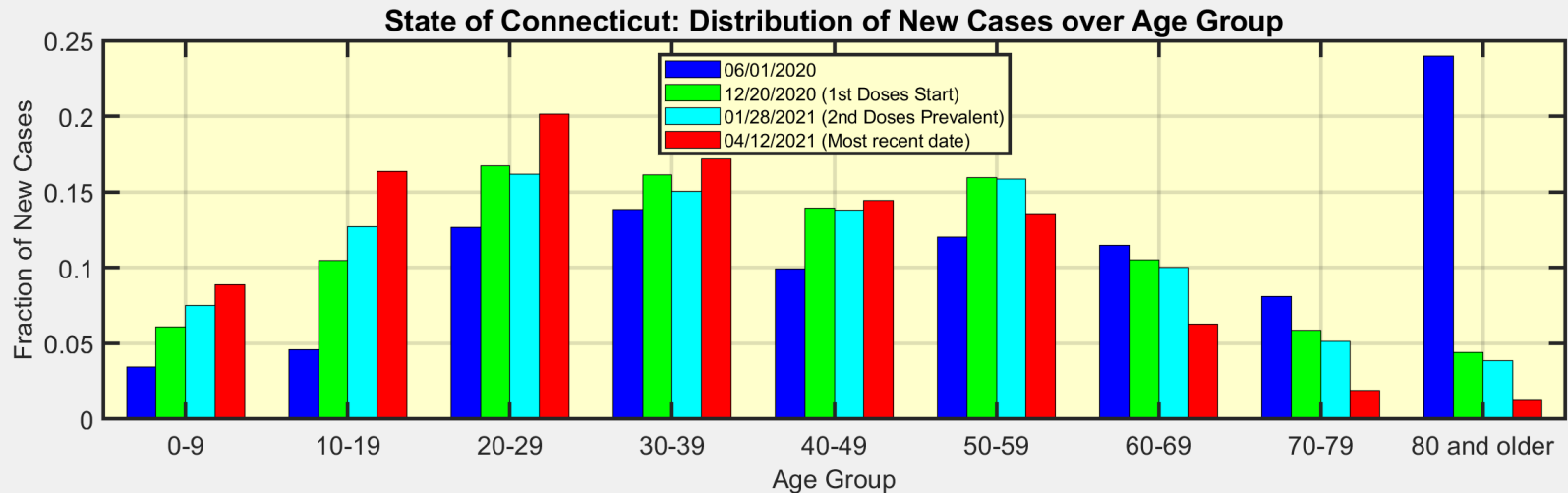
Town of Ridgefield: Test Positivity



Data Source: <https://data.ct.gov>



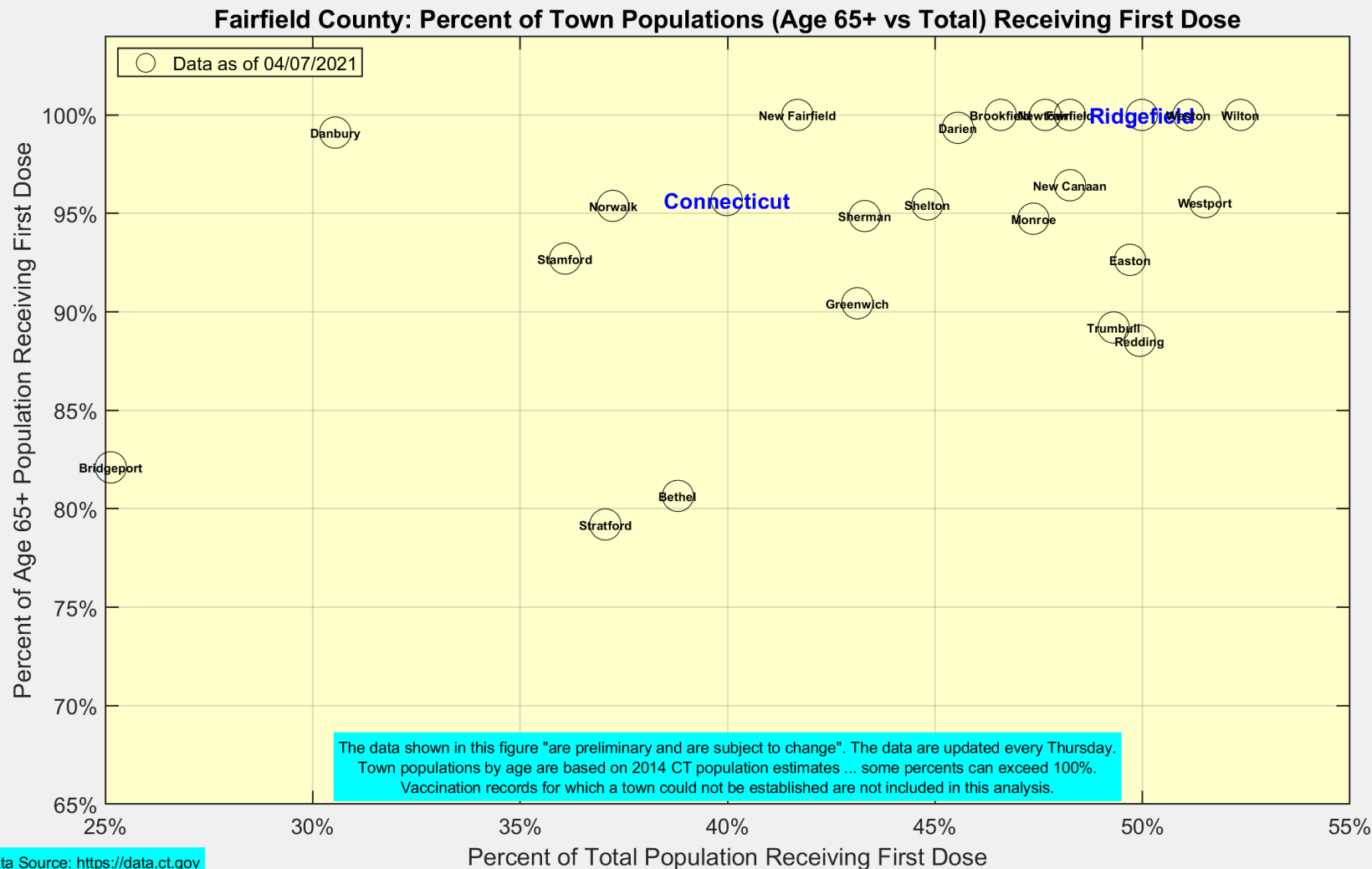
We are seeing more cases in ages 10-39 as ages 60+ become fully vaccinated



Data Source: <https://data.ct.gov>



Latest Vaccination Rates for Towns in Fairfield County



Number of Ridgefield Residents Receiving First Dose (Weekly)

