

## Ridgefield COVID Summary

Ridgefield COVID-19 Task Force



Data downloaded from  
<https://data.ct.gov/browse?category=Health+and+Human+Services>

Data downloaded on Wednesday, March 31, 2021 at 4:00 PM  
This reflects data through Tuesday, March 30, 2021

## Ridgefield Summary

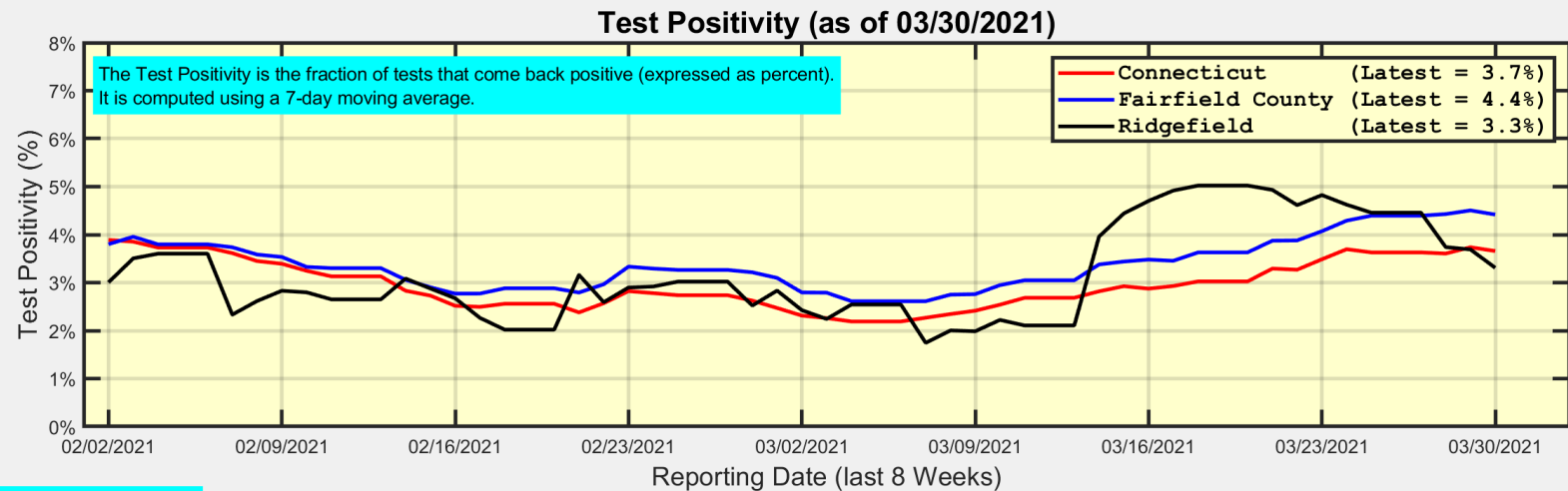
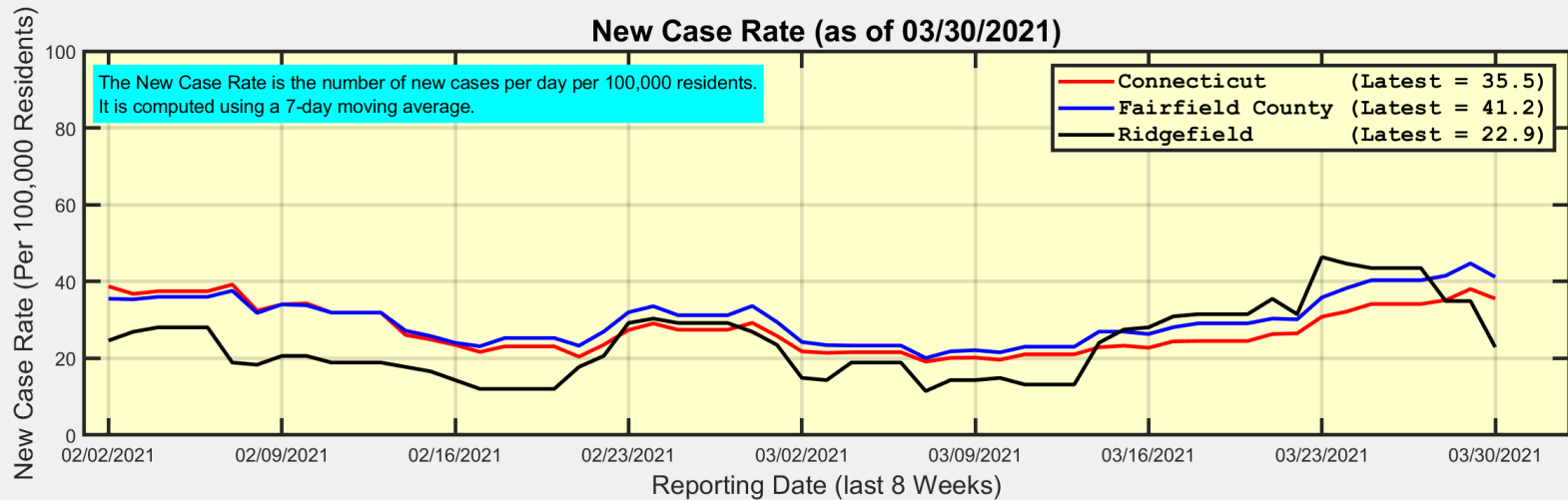
Ridgefield	Tuesday 03/30/2021	Monday 03/29/2021
Number of New Cases Reported	7	7
New Case Rate (per 100,000 Residents)	22.9	34.9
New Test Rate (per 100,000 Residents)	692.0	946.1
Test Positivity	3.3%	3.7%
Fairfield County	Tuesday 03/30/2021	Monday 03/29/2021
Number of New Cases Reported	252	470
New Case Rate (per 100,000 Residents)	41.2	44.7
New Test Rate (per 100,000 Residents)	931.9	992.6
Test Positivity	4.4%	4.5%
Currently Hospitalized	135	141
<b>Data Source: <a href="https://data.ct.gov">https://data.ct.gov</a>. This report reflects data reported to the State through Tuesday 03/30/2021.</b> <b>The New Case Rate, New Test Rate, and Test Positivity are computed using 7-day moving averages.</b>		

Our data science confirms CDC and other studies:

***Wearing a Mask Reduces COVID Case Rates***



# New Case Rates and Test Positivity for Connecticut, Fairfield County, and Ridgefield

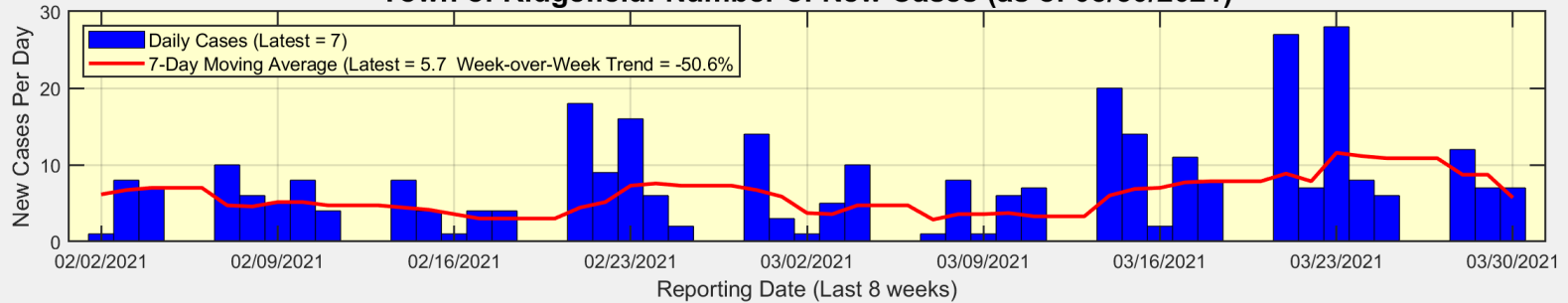


Data Source: <https://data.ct.gov>

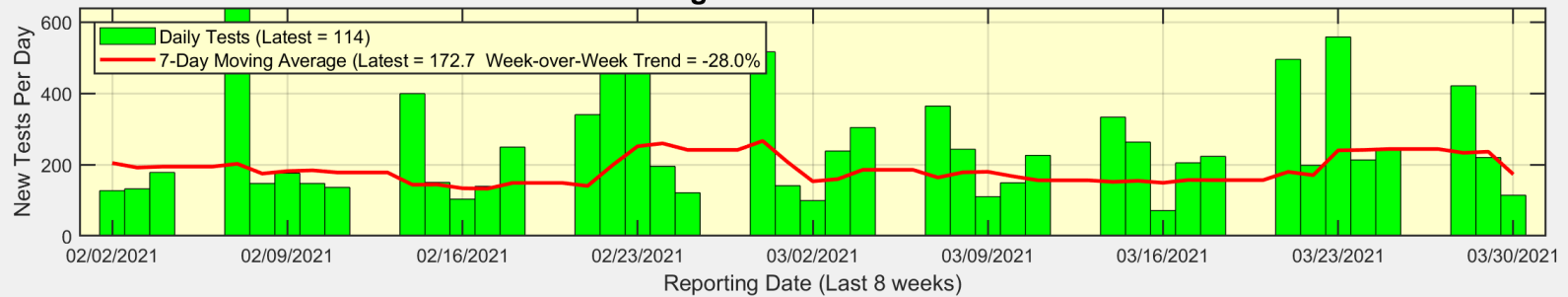


# New Cases, New Tests, and Test Positivity for Ridgefield

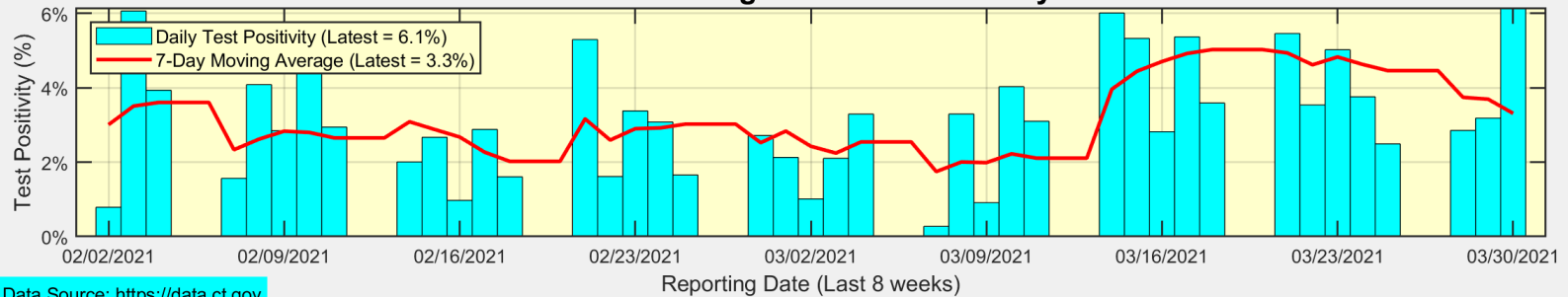
**Town of Ridgefield: Number of New Cases (as of 03/30/2021)**



**Town of Ridgefield: Number of New Tests**



**Town of Ridgefield: Test Positivity**

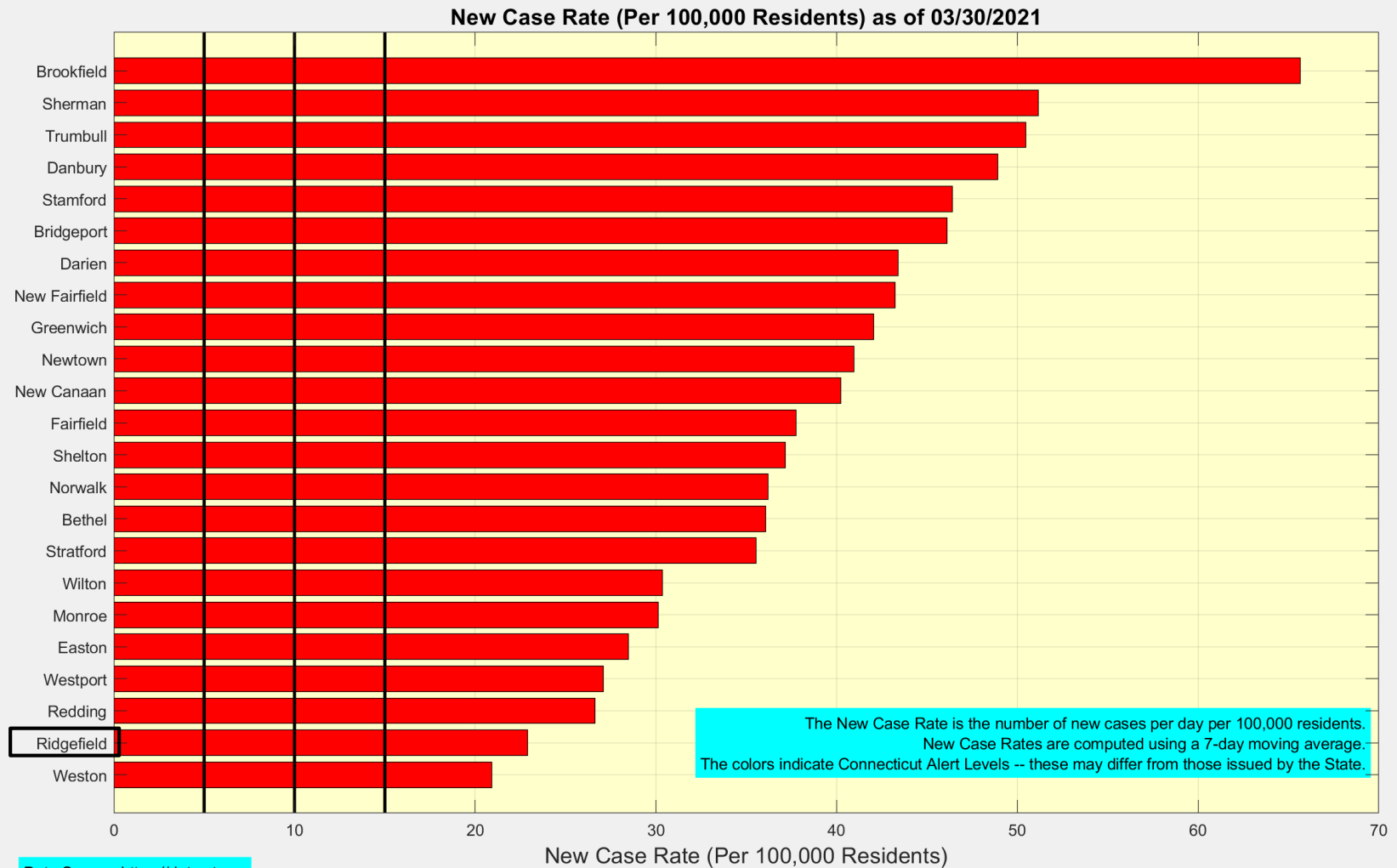


Data Source: <https://data.ct.gov>

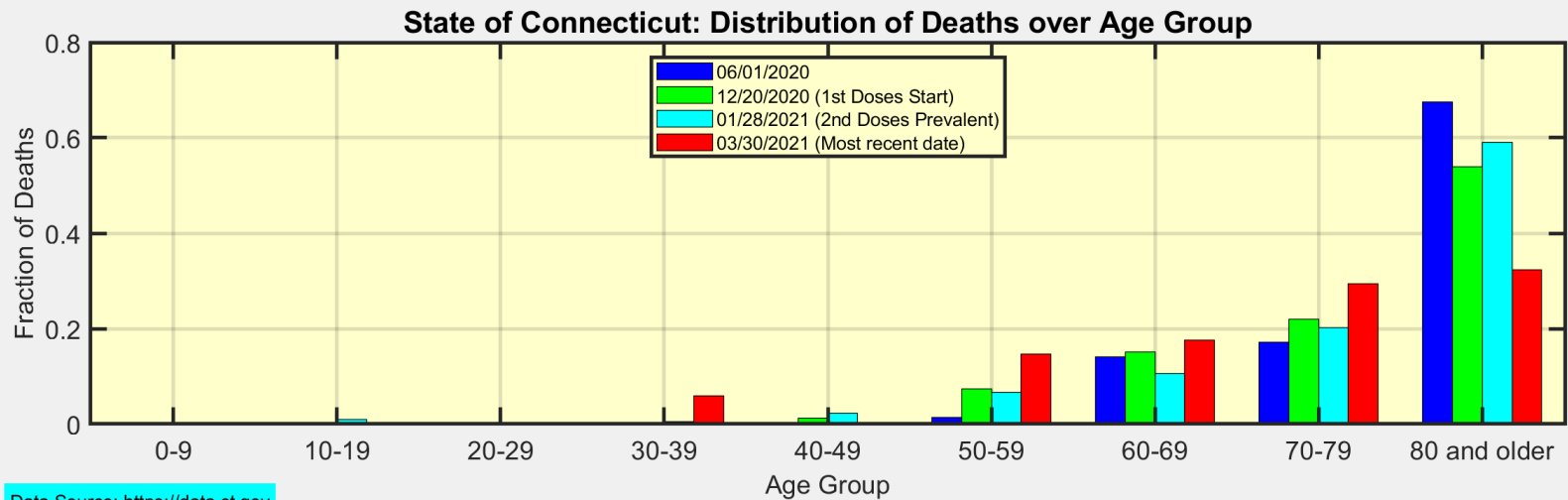
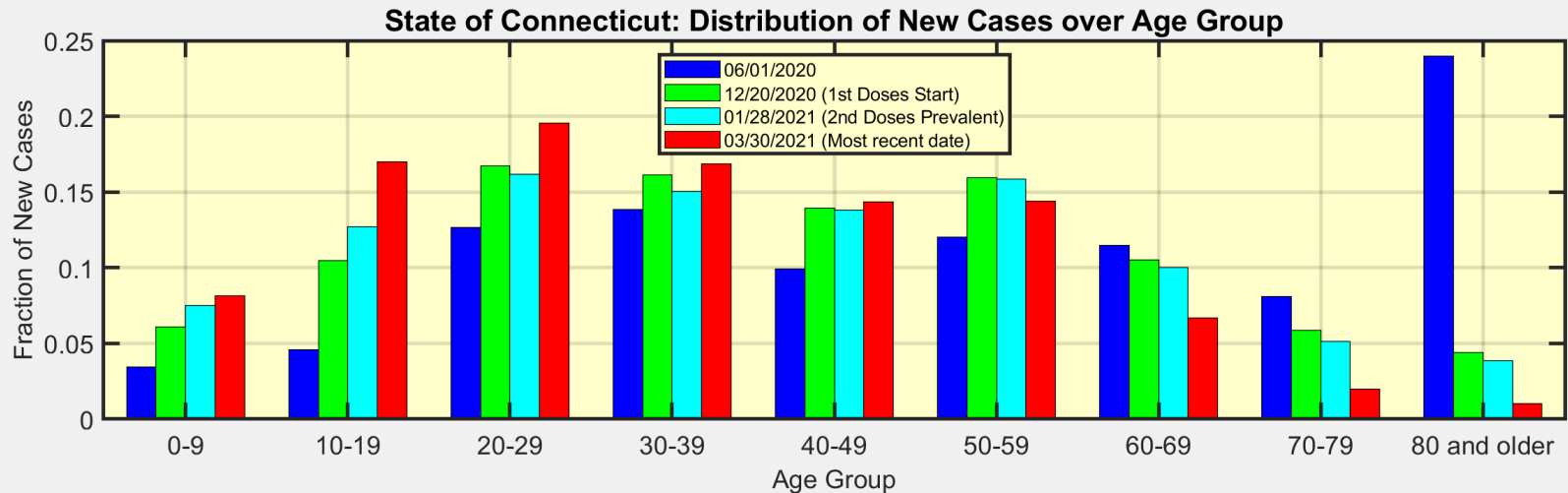


Ridgefield COVID-19 Task Force

# New Case Rates for all towns in Fairfield County



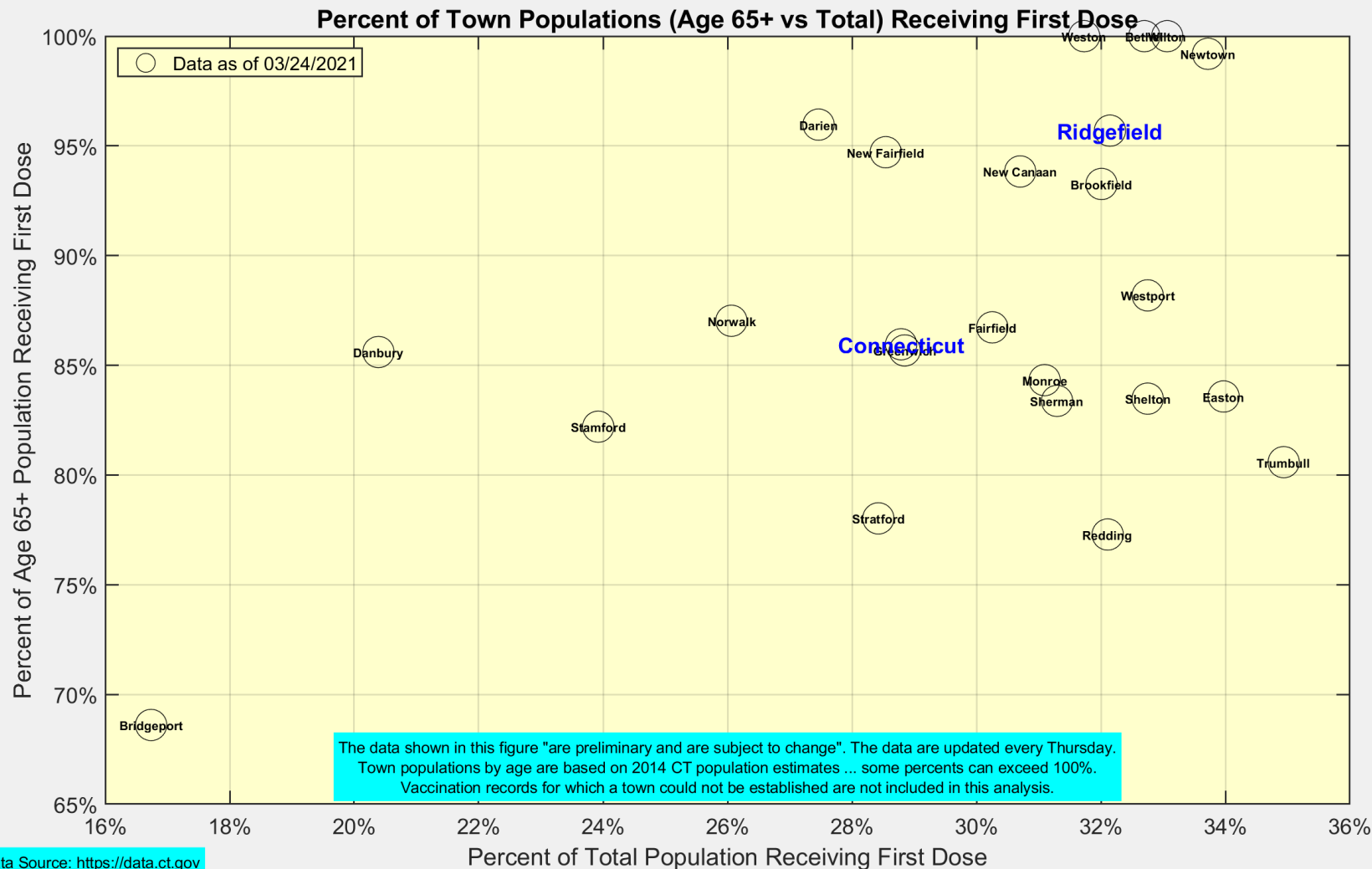
# We are seeing more cases in ages 10-39 as ages 60+ become fully vaccinated



Data Source: <https://data.ct.gov>



# Latest Vaccination Rates for Towns in Fairfield County



# Number of Ridgefield Residents Receiving First Dose (Weekly)

