

Ridgefield COVID Summary

Ridgefield COVID-19 Task Force



Data downloaded from
<https://data.ct.gov/browse?category=Health+and+Human+Services>

Data downloaded on Thursday, February 04, 2021 at 4:00 PM
This reflects data through Wednesday, February 03, 2021

Ridgefield Summary

Data downloaded on Thursday, 02/04/2021 at 4:00 PM

| Ridgefield | Wednesday 02/03/2021 | Tuesday 02/02/2021 |
|--|----------------------|--------------------|
| Number of New Cases Reported | 8 | 1 |
| New Case Rate (per 100,000 Residents) | 26.9 | 24.6 |
| New Test Rate (per 100,000 Residents) | 766.1 | 817.5 |
| Test Positivity | 3.5% | 3.0% |
| | | |
| Fairfield County | Wednesday 02/03/2021 | Tuesday 02/02/2021 |
| Number of New Cases Reported | 271 | 111 |
| New Case Rate (per 100,000 Residents) | 35.4 | 35.5 |
| New Test Rate (per 100,000 Residents) | 893.8 | 934.3 |
| Test Positivity | 4.0% | 3.8% |
| Currently Hospitalized | 203 | 214 |
| Data Source: https://data.ct.gov . This report reflects data reported to the State through Wednesday 02/03/2021. The New Case Rate, New Test Rate, and Test Positivity are computed using 7-day moving averages. | | |

Connecticut New Tests (and hence New Cases) this week were likely impacted by the severe snowstorm on Monday and Tuesday.

Our data science confirms CDC and other studies:

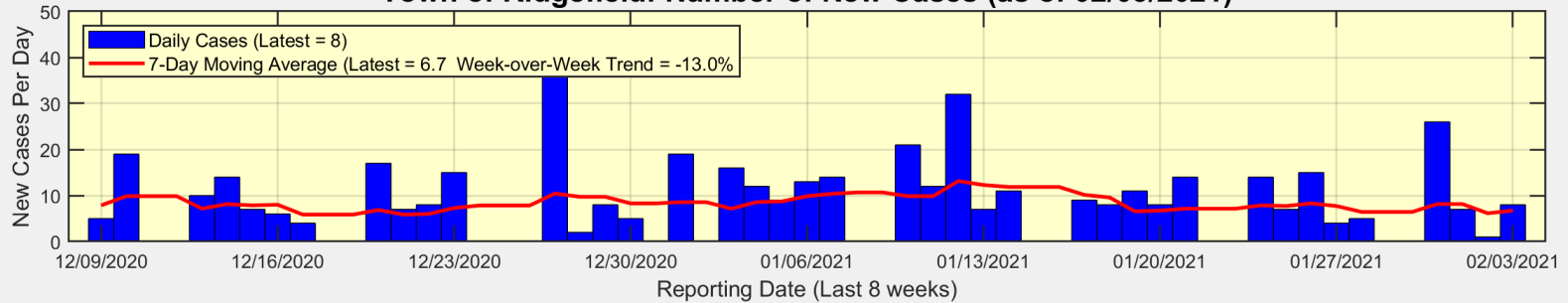
Wearing a Mask Reduces COVID Case Rates



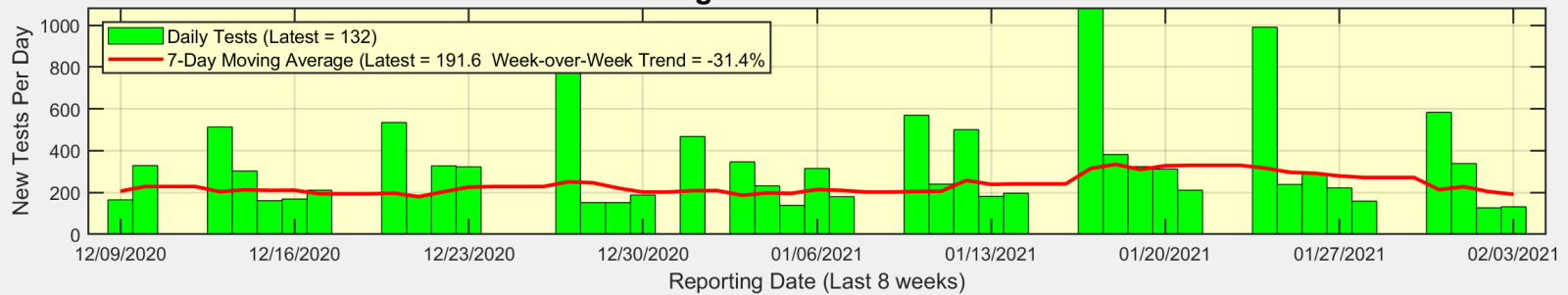
Ridgefield COVID-19 Task Force

There were 8 new cases reported for Ridgefield on Wednesday

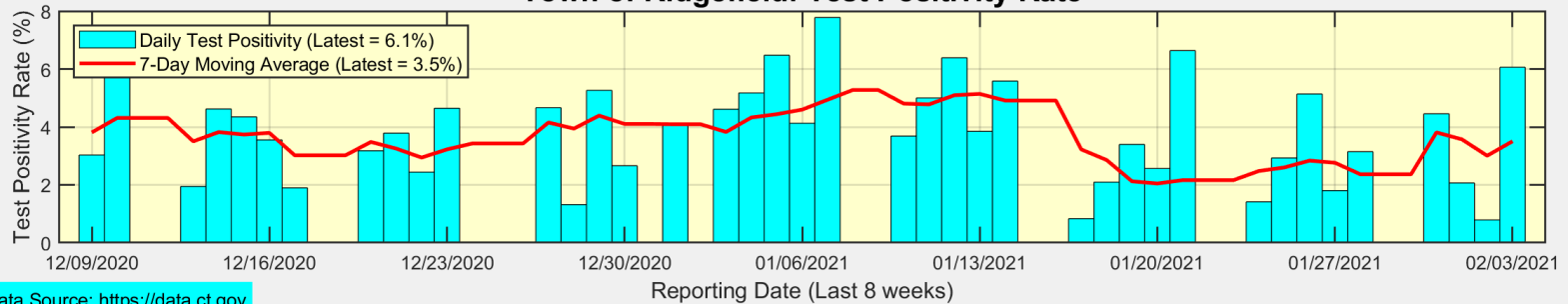
Town of Ridgefield: Number of New Cases (as of 02/03/2021)



Town of Ridgefield: Number of New Tests



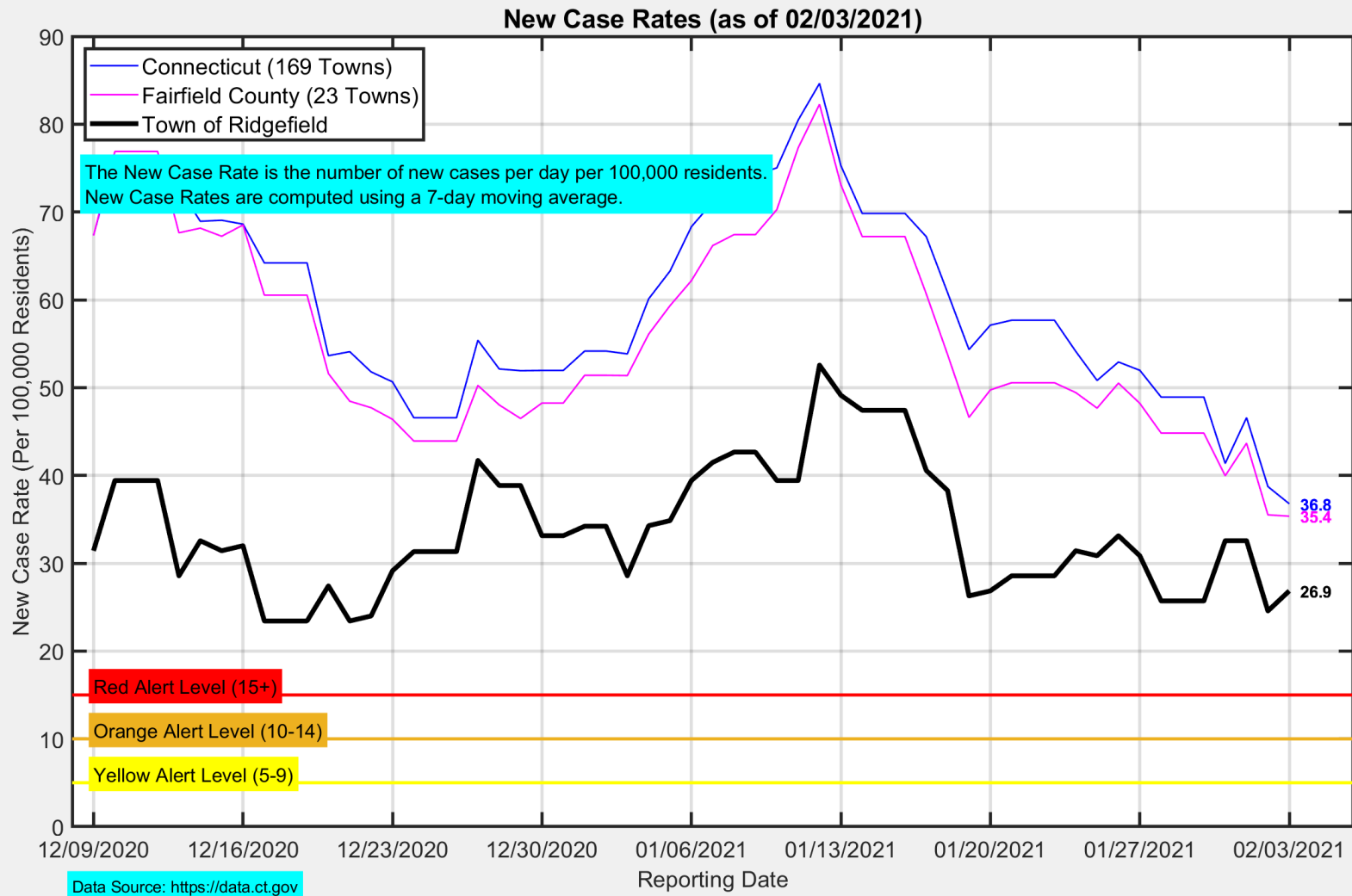
Town of Ridgefield: Test Positivity Rate



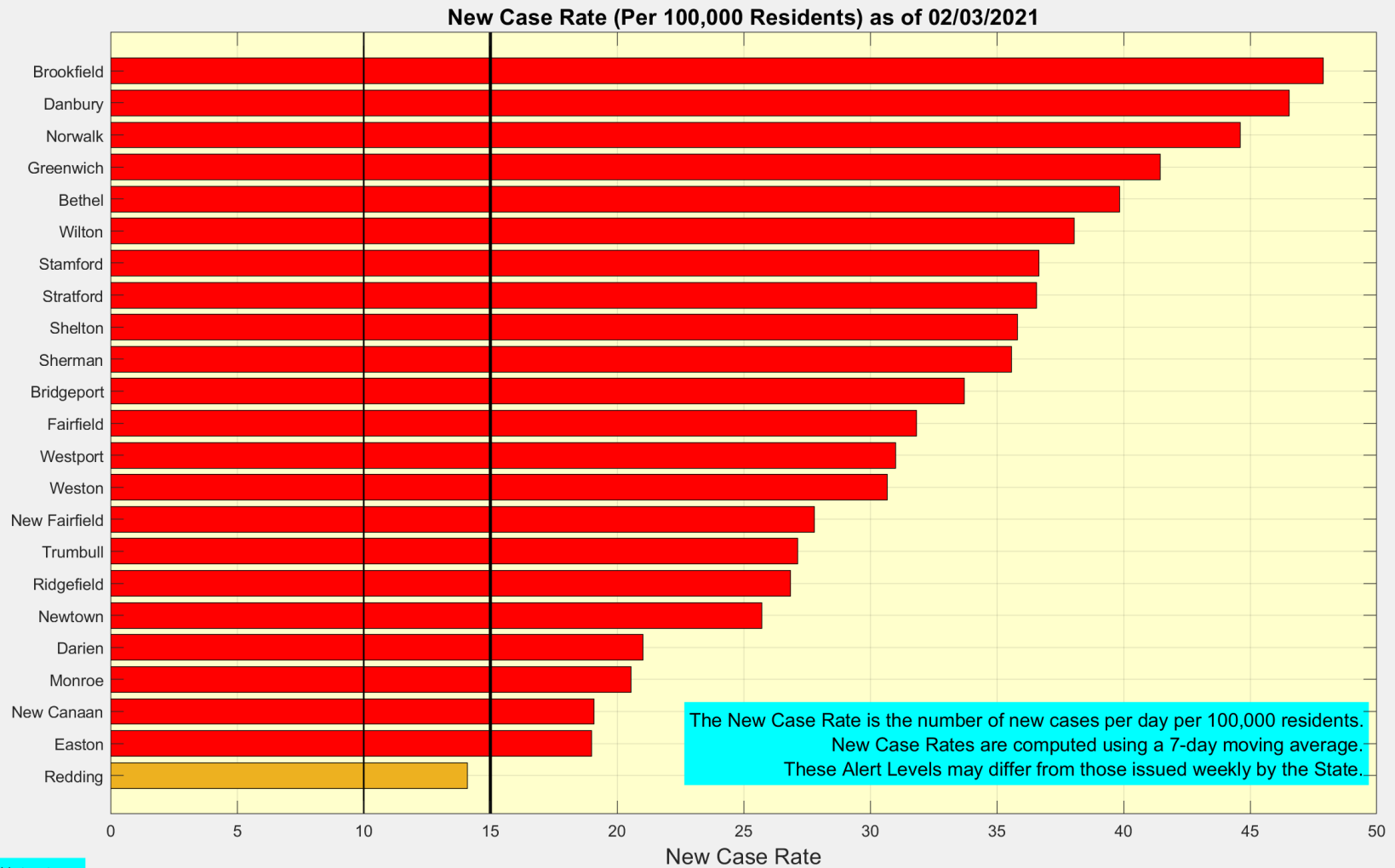
Data Source: <https://data.ct.gov>



The New Case Rate in Ridgefield was stable at 26.9



Here are the latest New Case Rates for all towns in Fairfield County

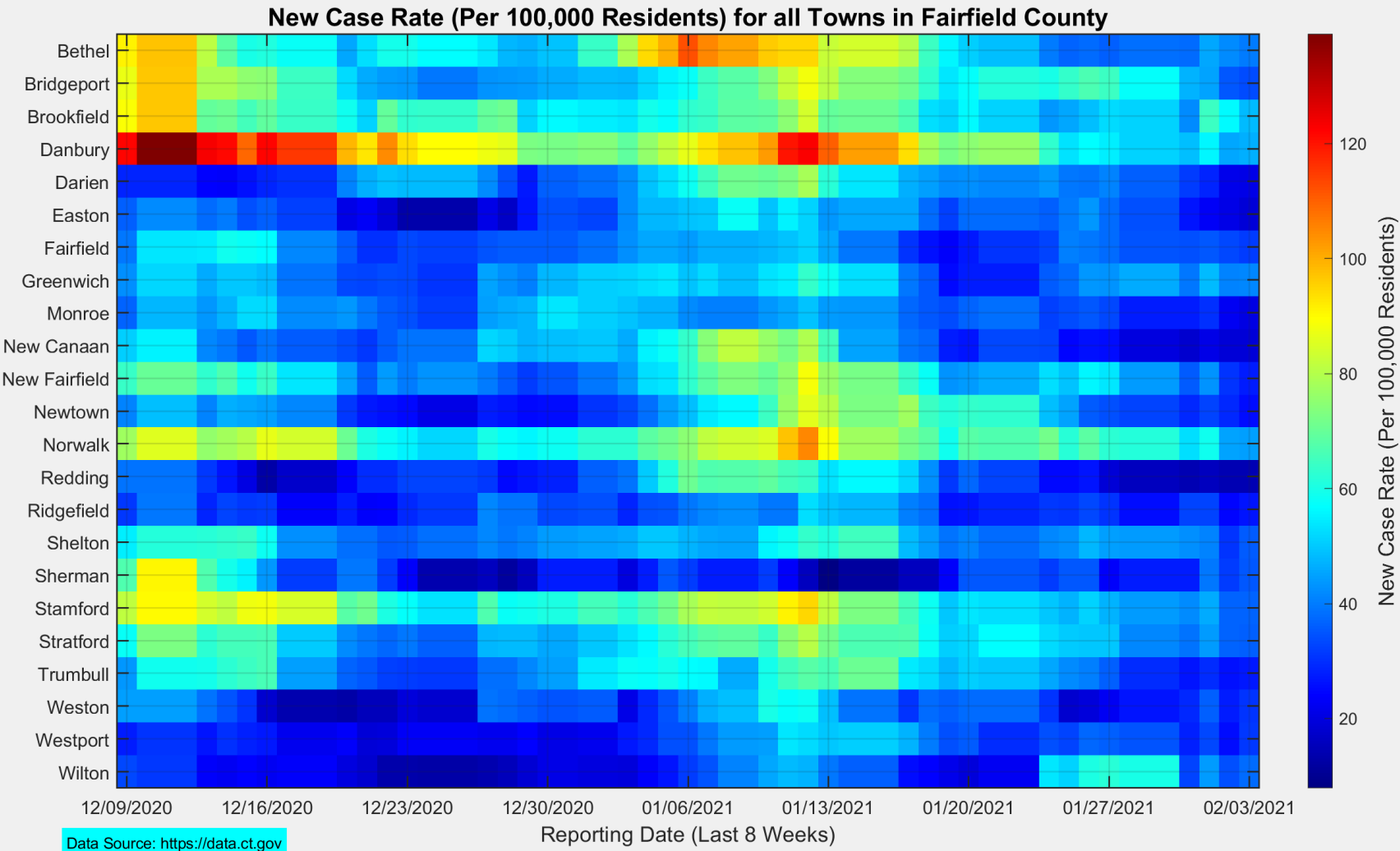


Source: <https://data.ct.gov>

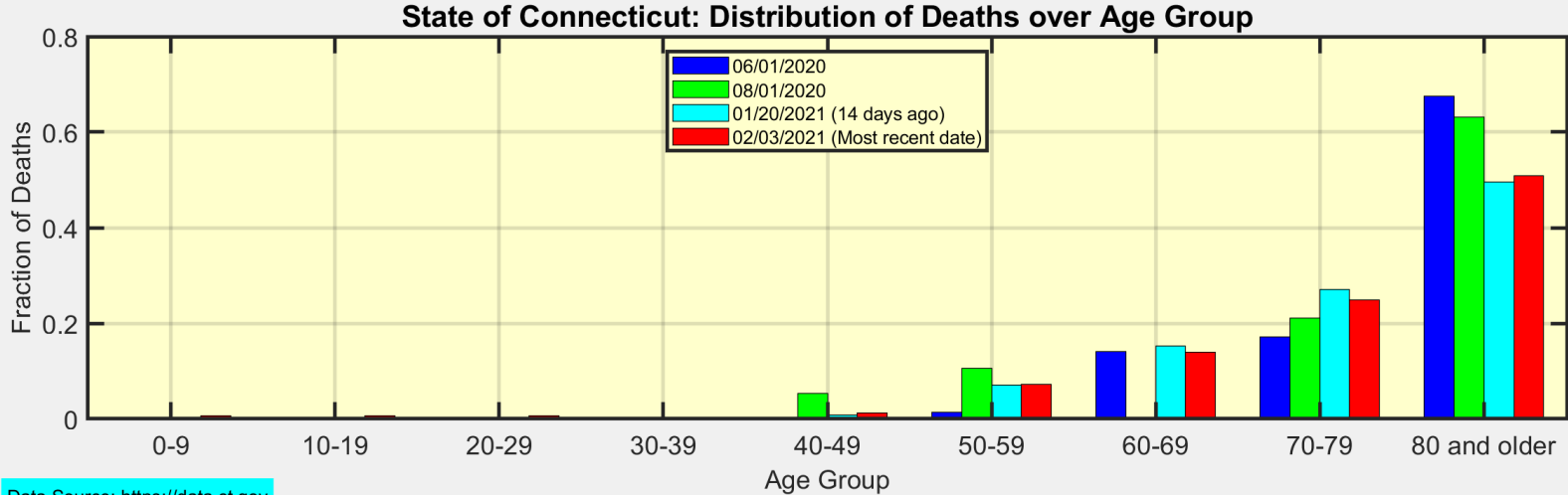
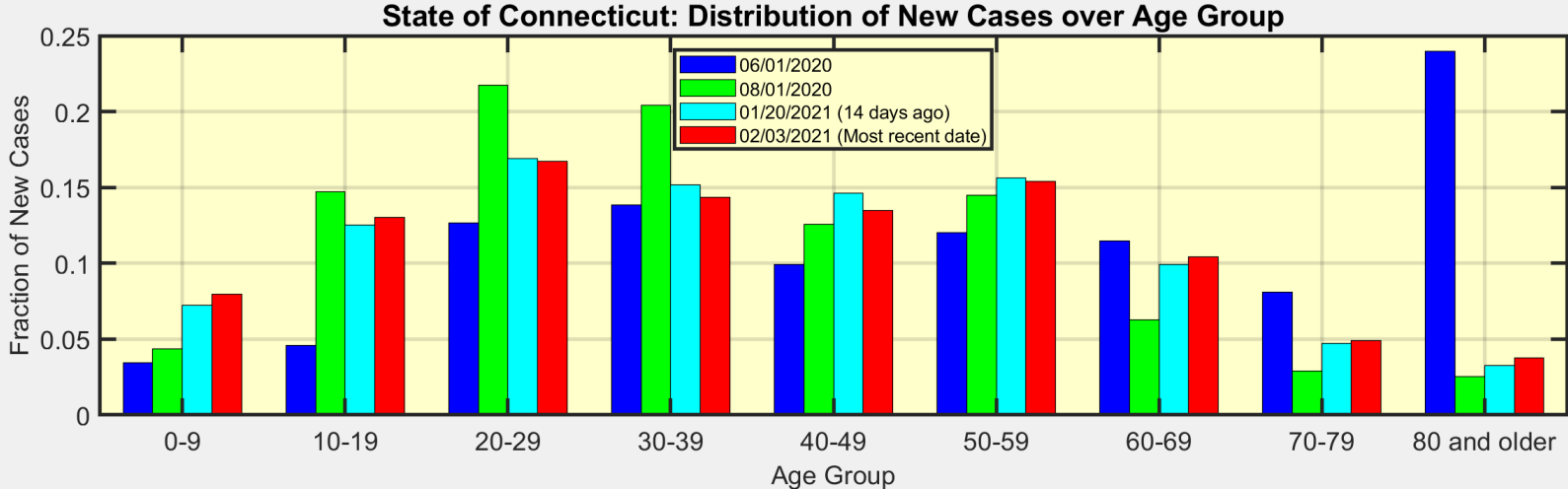


Ridgefield COVID-19 Task Force

This heat map shows the progression of New Case Rates for all towns in Fairfield County



These are the distributions of New Cases and Deaths over age group for the State of Connecticut



Data Source: <https://data.ct.gov>



Introduction to Scatter Plots of New Case Rates vs New Test Rates

y-axis

x-axis

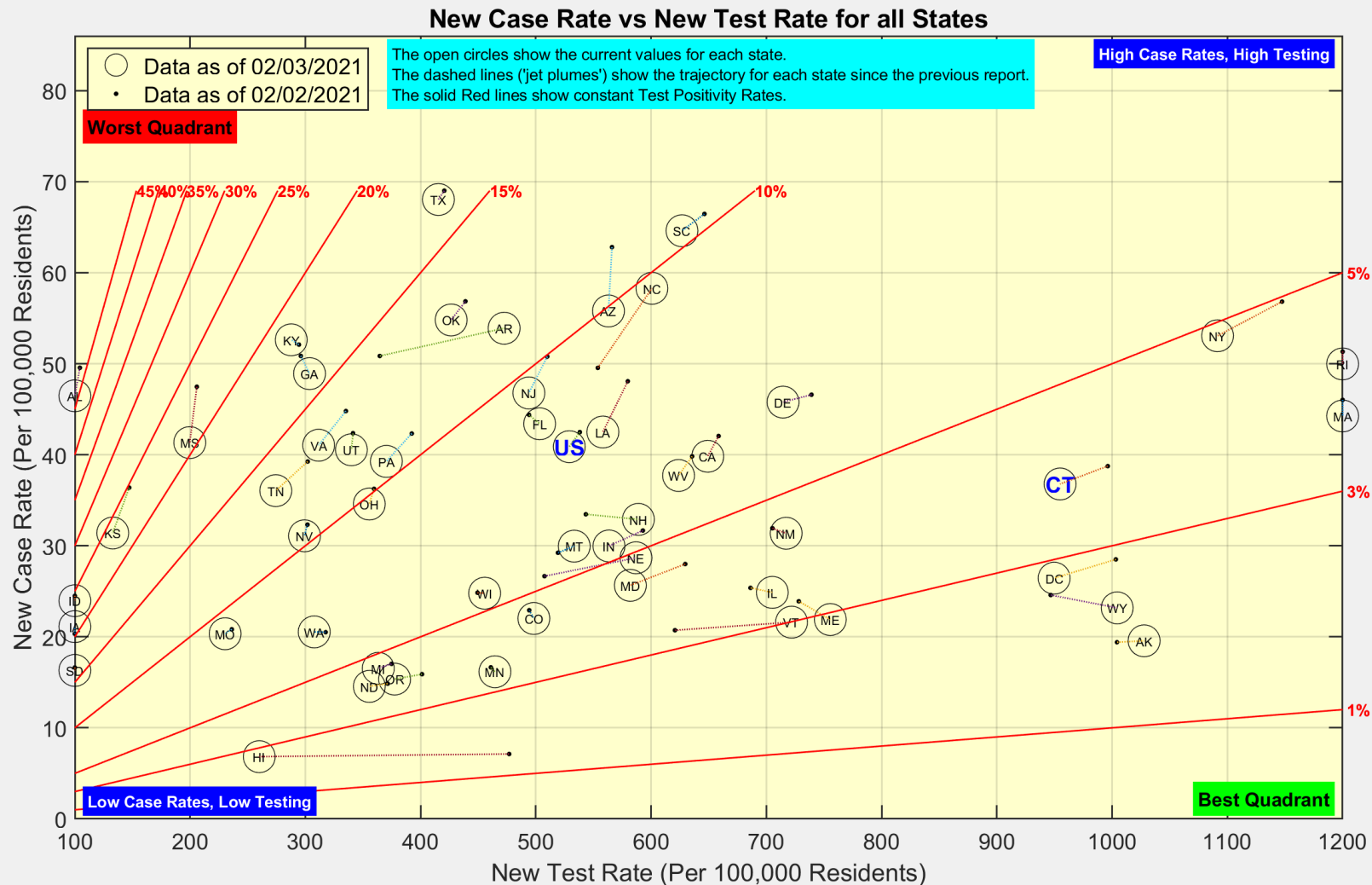
Red Diagonal Lines

$$\begin{array}{l} \text{New Case Rate} \\ \left[\frac{\text{New Cases}}{100,000 \text{ Residents}} \right] \end{array} = \begin{array}{l} \text{New Test Rate} \\ \left[\frac{\text{New Tests}}{100,000 \text{ Residents}} \right] \end{array} \times \begin{array}{l} \text{Test Positivity} \\ \left[\frac{\text{New Cases}}{\text{New Tests}} \right] \end{array}$$

1. The dashed lines can be thought of as 'jet plumes' showing the trajectory of each state (or town) since the previous report.
2. The New Case Rate and the New Test Rate are computed as 7-day moving averages.



Here is the latest view of New Cases and New Tests for all states

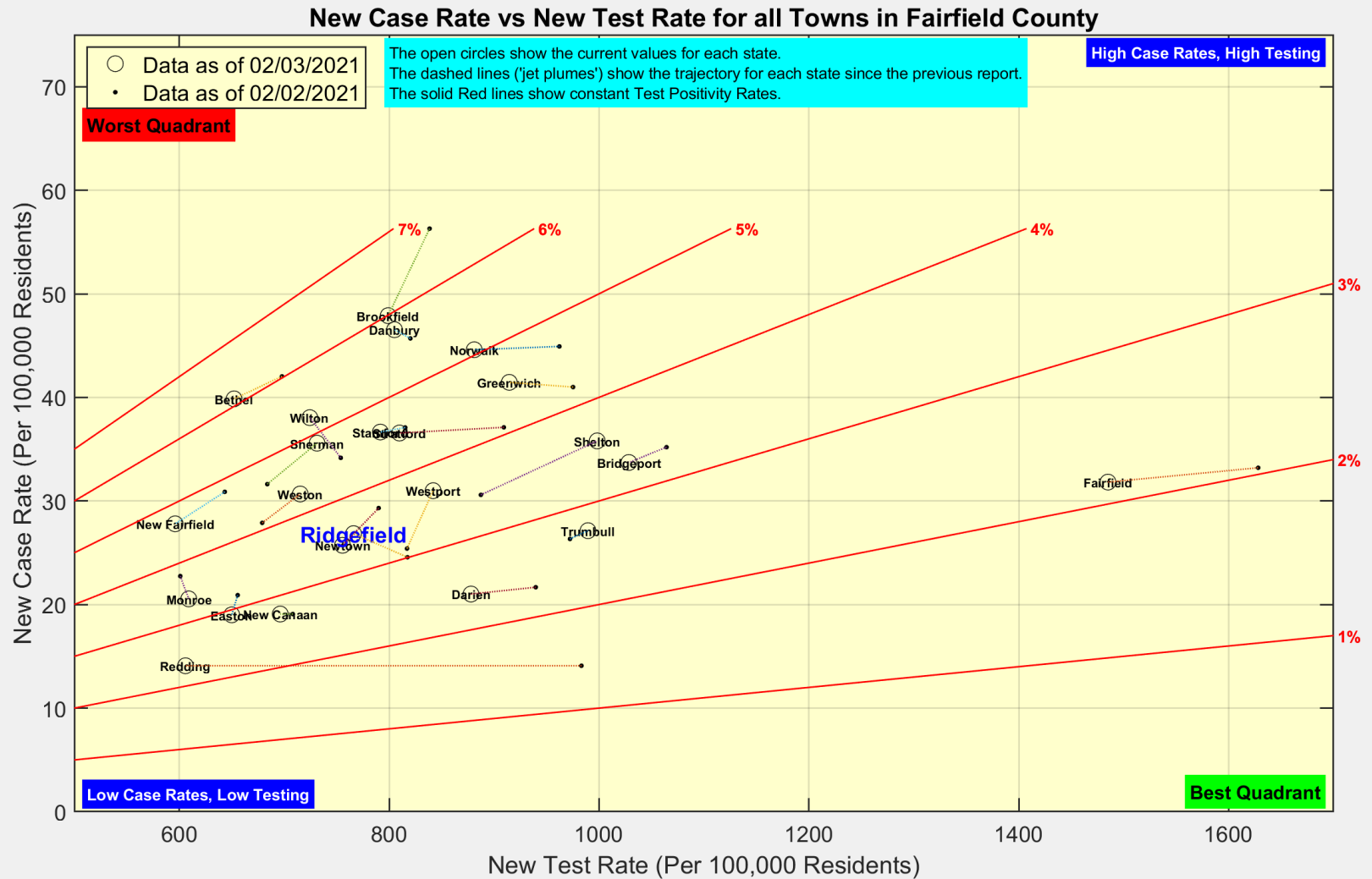


Data Source: <https://covidtracking.com/data/api>



Ridgefield COVID-19 Task Force

Here is the latest view of New Cases and New Tests for all towns in Fairfield County



Data Source: <https://data.ct.gov>



Ridgefield COVID-19 Task Force