

Ridgefield COVID Summary

Ridgefield COVID-19 Task Force



Data downloaded from
<https://data.ct.gov/browse?category=Health+and+Human+Services>

Data downloaded on Monday, February 01, 2021 at 4:00 PM
This reflects data through Sunday, January 31, 2021

Ridgefield Summary

Data downloaded on Monday, 02/01/2021 at 4:00 PM

Ridgefield	Sunday 01/31/2021	Thursday 01/28/2021
Number of New Cases Reported	26	5
New Case Rate (per 100,000 Residents)	32.6	25.7
New Test Rate (per 100,000 Residents)	854.6	1087.2
Test Positivity	3.8%	2.4%
Fairfield County	Sunday 01/31/2021	Thursday 01/28/2021
Number of New Cases Reported	961	329
New Case Rate (per 100,000 Residents)	40.0	44.8
New Test Rate (per 100,000 Residents)	1097.9	1403.7
Test Positivity	3.6%	3.2%
Currently Hospitalized	229	253
Data Source: https://data.ct.gov . This report reflects data reported to the State through Sunday 01/31/2021. The New Case Rate, New Test Rate, and Test Positivity are computed using 7-day moving averages.		
NOTE: The Number of New Cases Reported for Sunday is the TOTAL over the last THREE DAYS (Friday, Saturday, Sunday).		

Our data science confirms CDC and other studies:

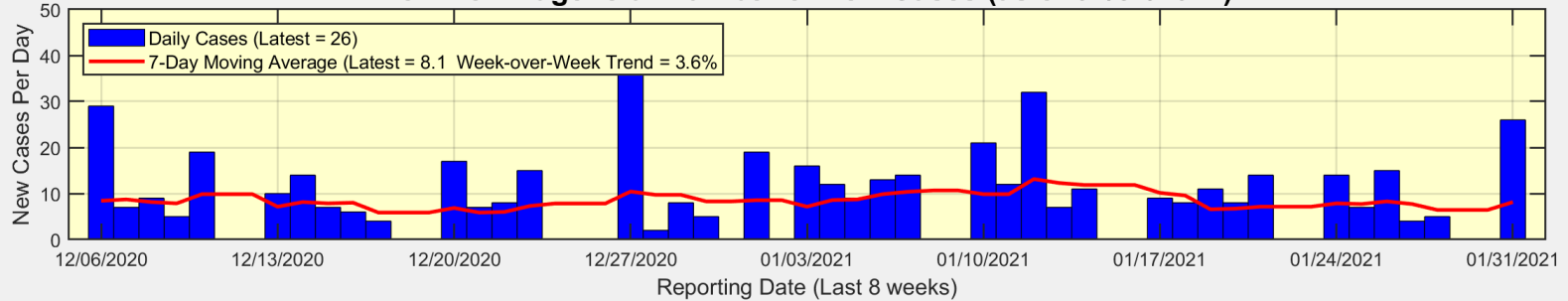
Wearing a Mask Reduces COVID Case Rates



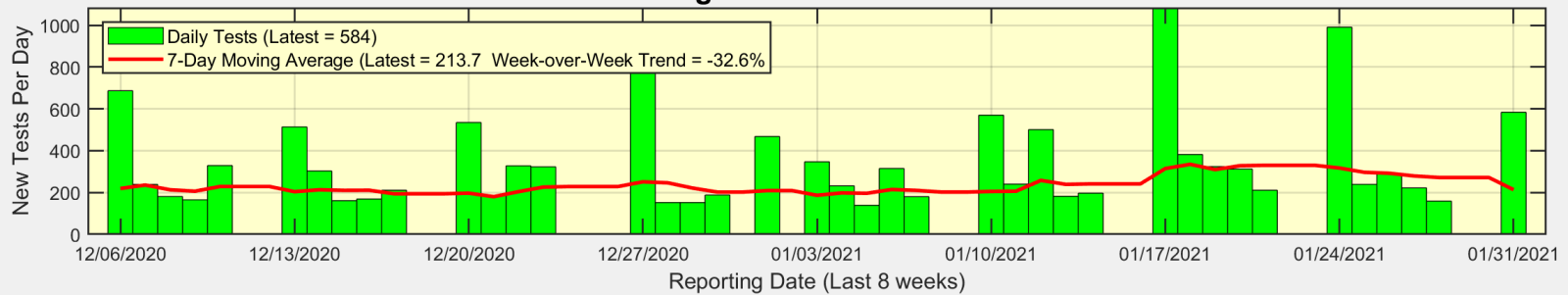
Ridgefield COVID-19 Task Force

There were 26 new cases reported for Ridgefield over the past 3 days

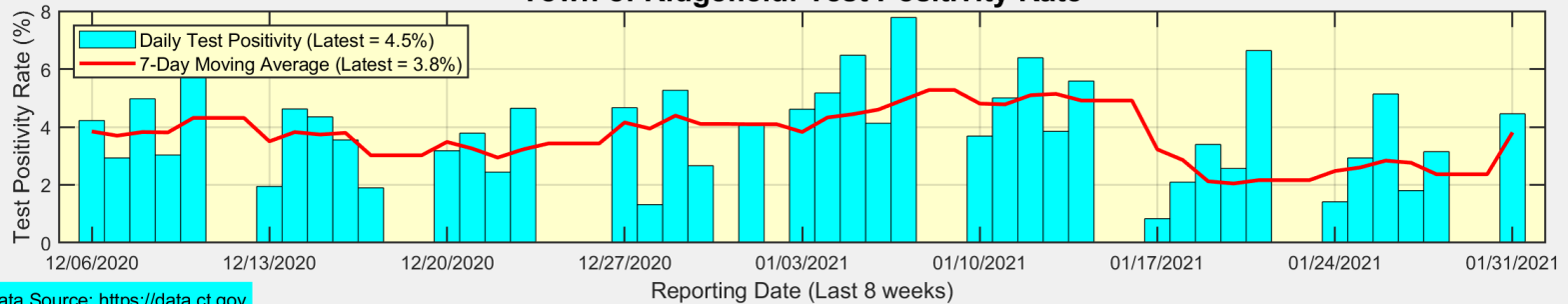
Town of Ridgefield: Number of New Cases (as of 01/31/2021)



Town of Ridgefield: Number of New Tests



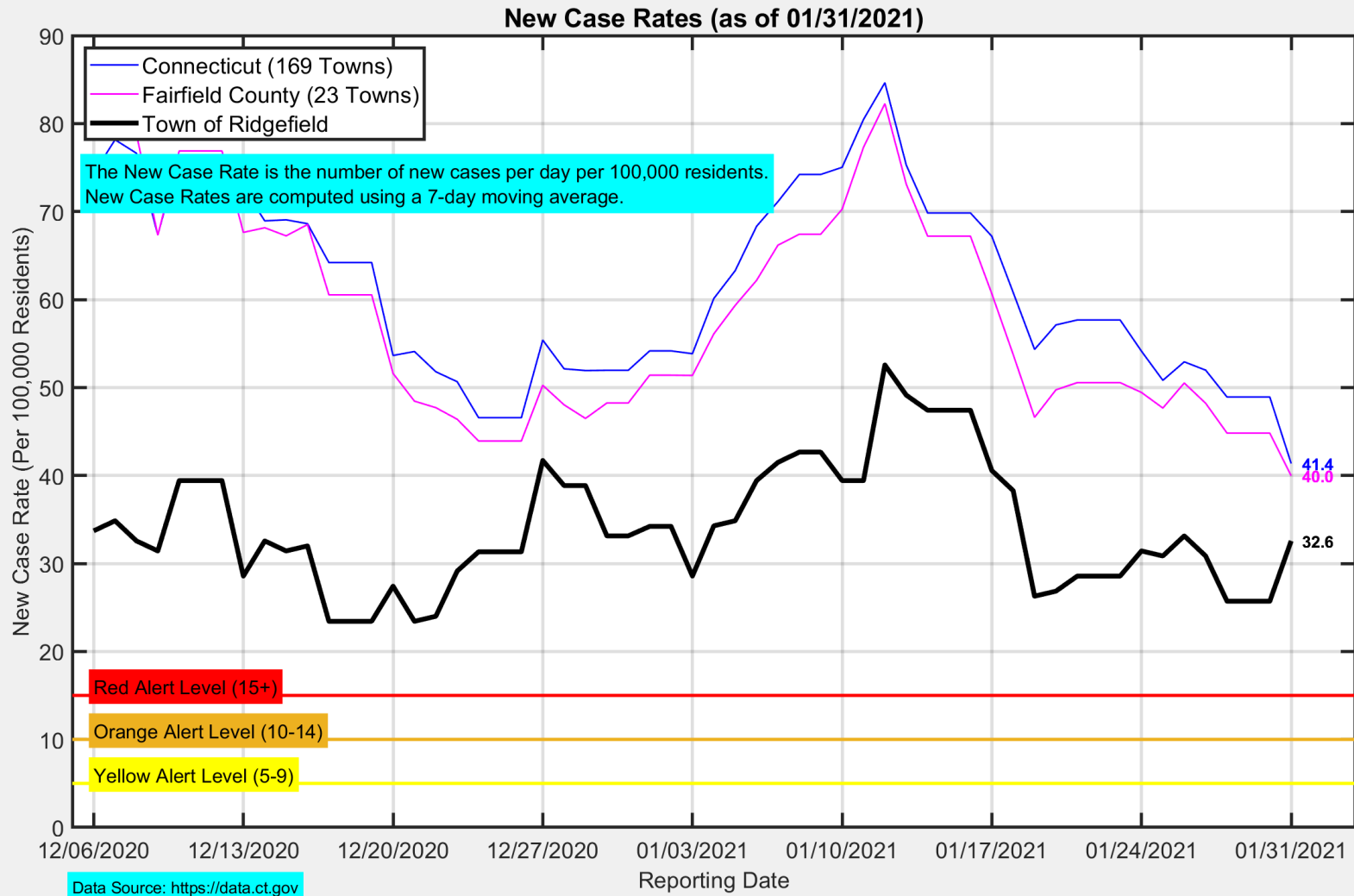
Town of Ridgefield: Test Positivity Rate



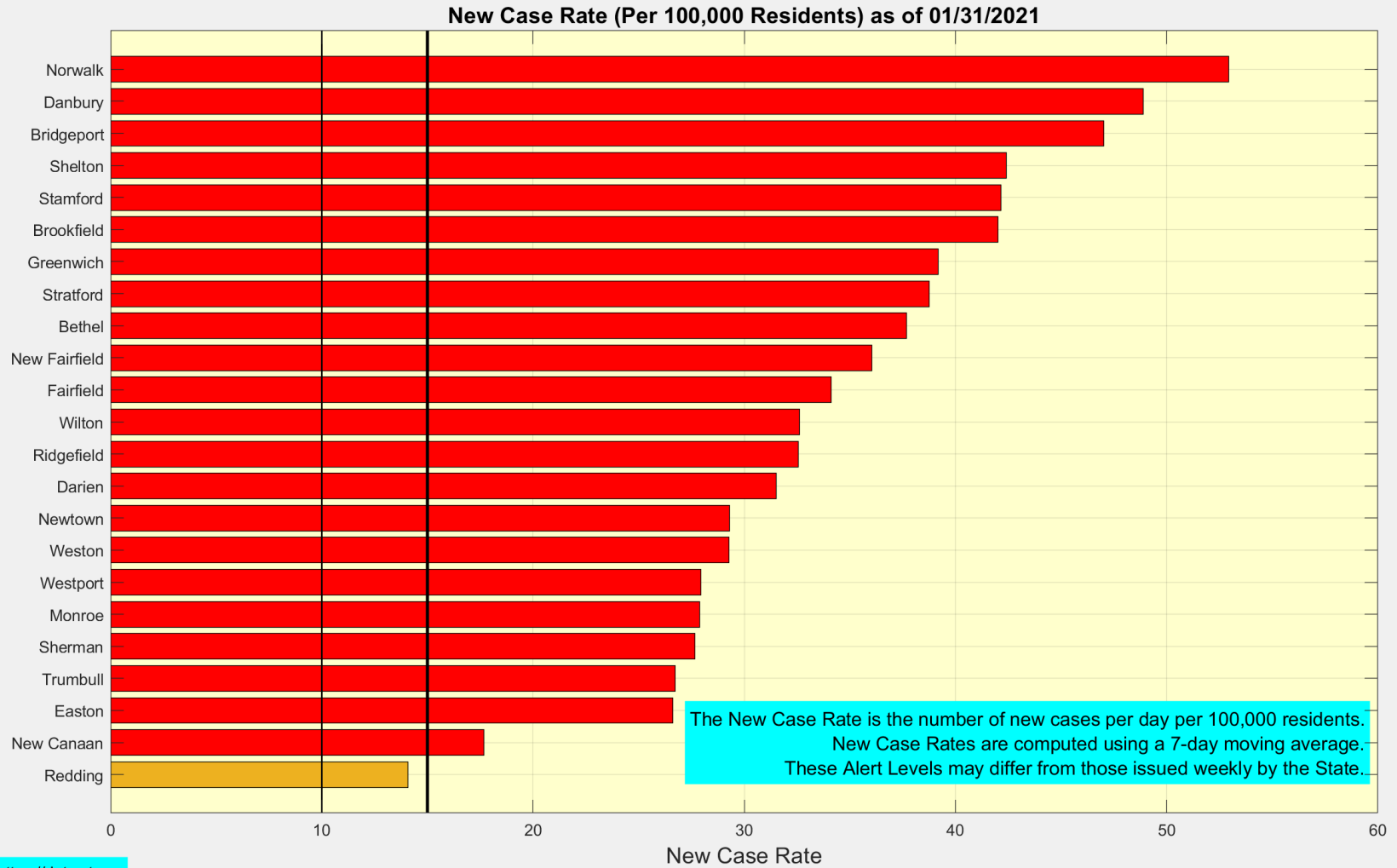
Data Source: <https://data.ct.gov>



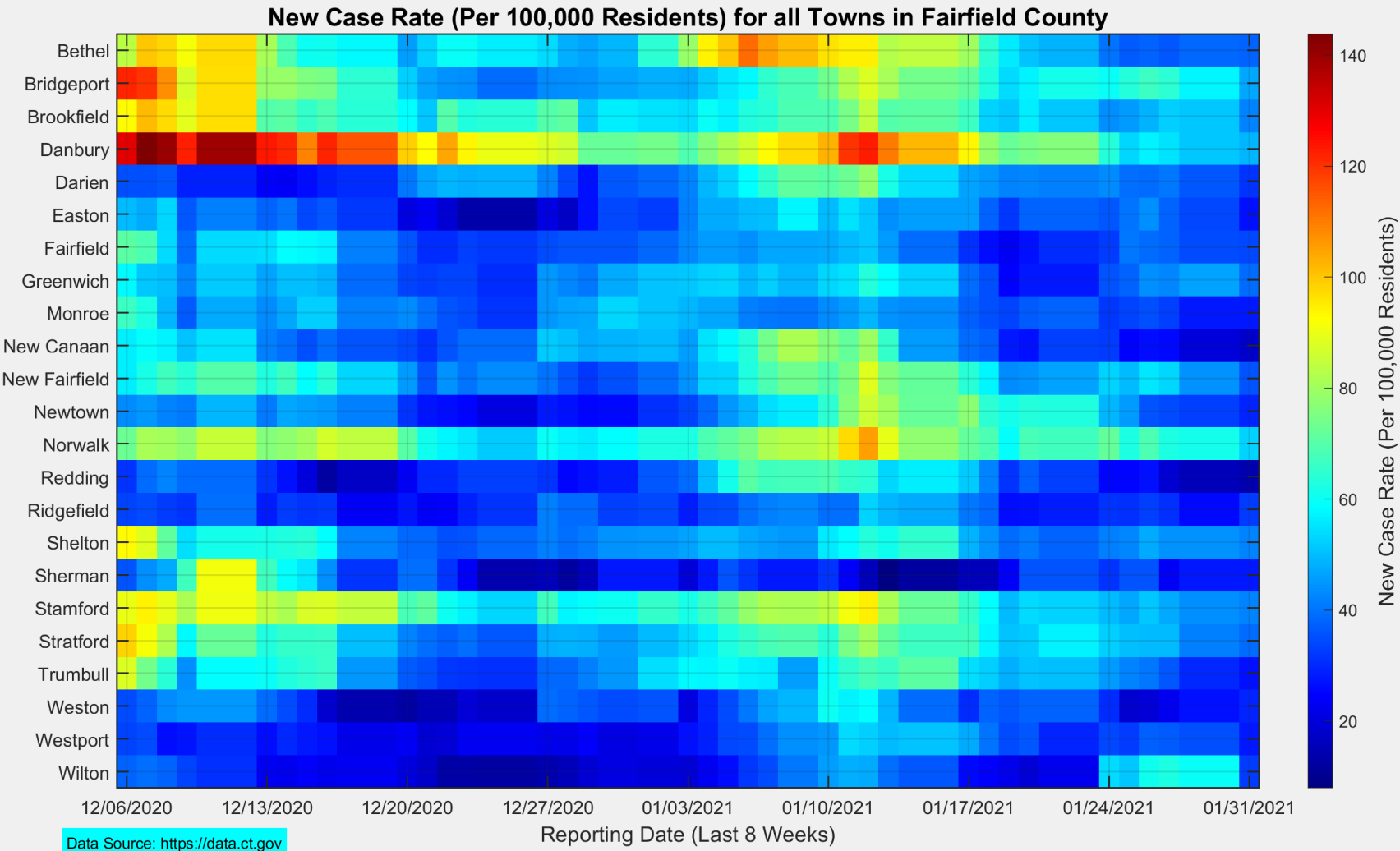
The New Case Rate in Ridgefield increased to 32.6



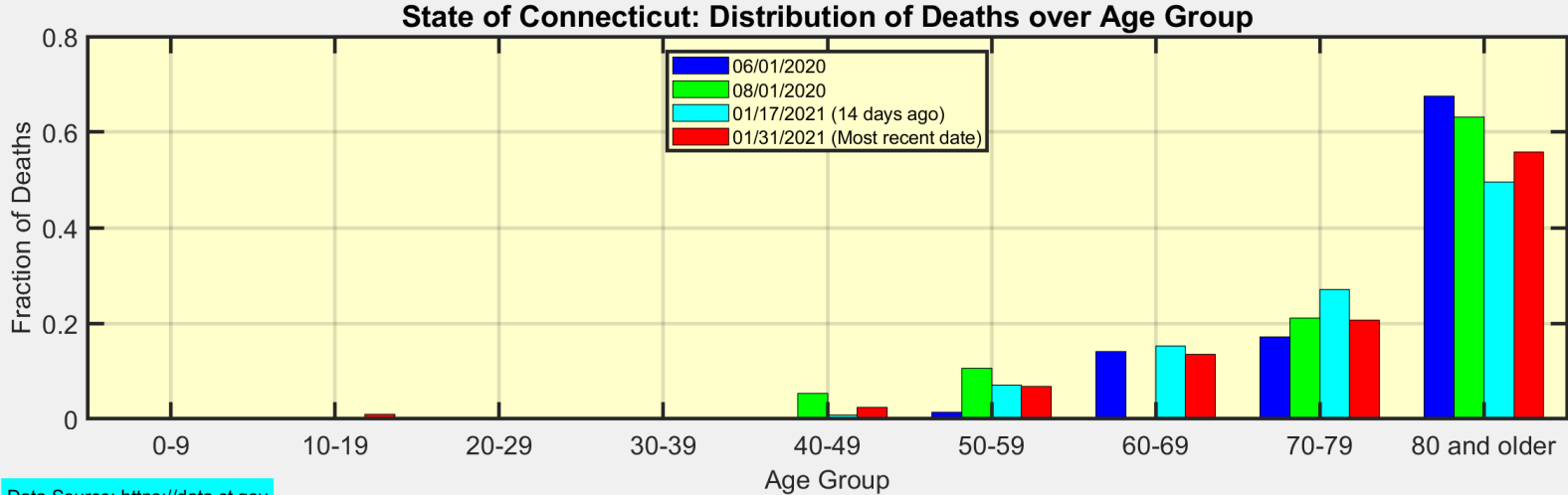
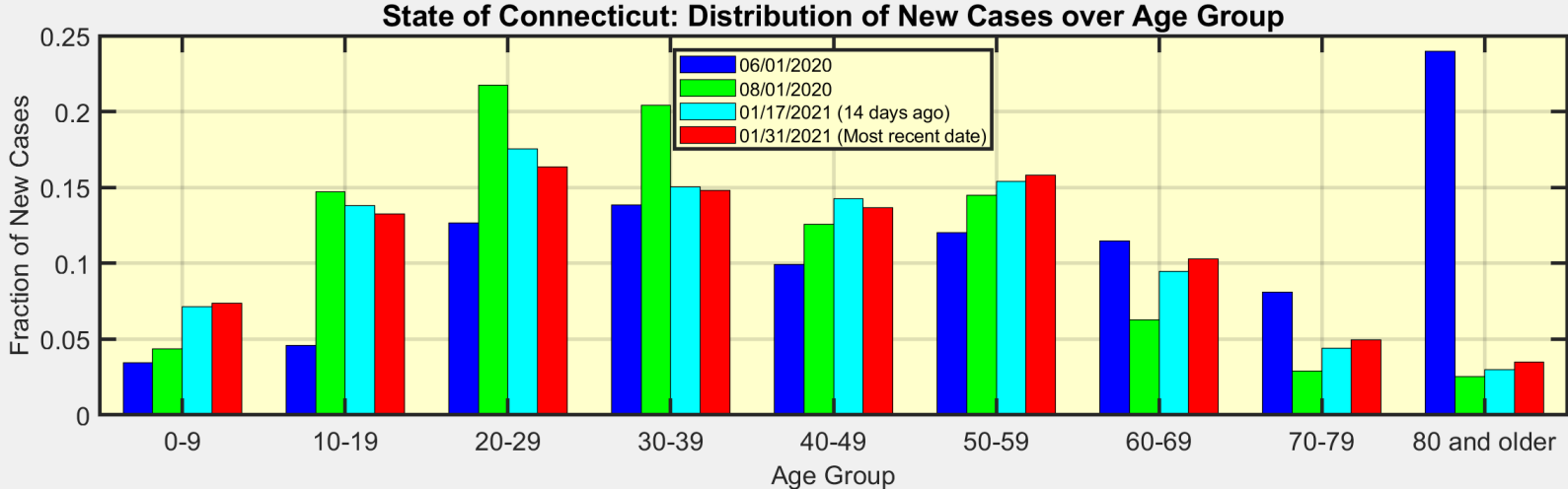
Here are the latest New Case Rates for all towns in Fairfield County



This heat map shows the progression of New Case Rates for all towns in Fairfield County



These are the distributions of New Cases and Deaths over age group for the State of Connecticut



Data Source: <https://data.ct.gov>



Introduction to Scatter Plots of New Case Rates vs New Test Rates

y-axis

x-axis

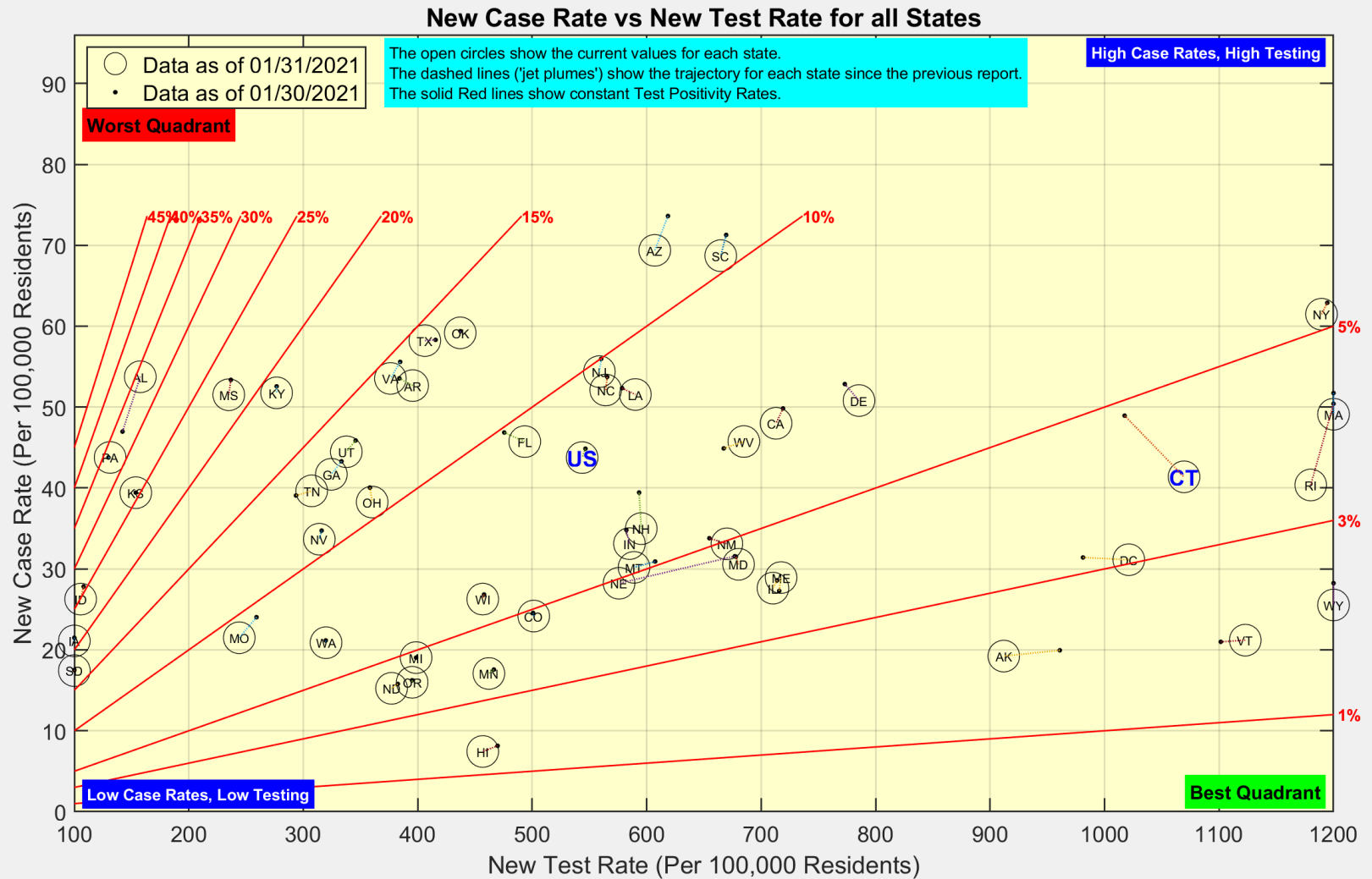
Red Diagonal Lines

$$\begin{array}{l} \text{New Case Rate} \\ \left[\frac{\text{New Cases}}{100,000 \text{ Residents}} \right] \end{array} = \begin{array}{l} \text{New Test Rate} \\ \left[\frac{\text{New Tests}}{100,000 \text{ Residents}} \right] \end{array} \times \begin{array}{l} \text{Test Positivity} \\ \left[\frac{\text{New Cases}}{\text{New Tests}} \right] \end{array}$$

1. The dashed lines can be thought of as 'jet plumes' showing the trajectory of each state (or town) since the previous report.
2. The New Case Rate and the New Test Rate are computed as 7-day moving averages.



Here is the latest view of New Cases and New Tests for all states

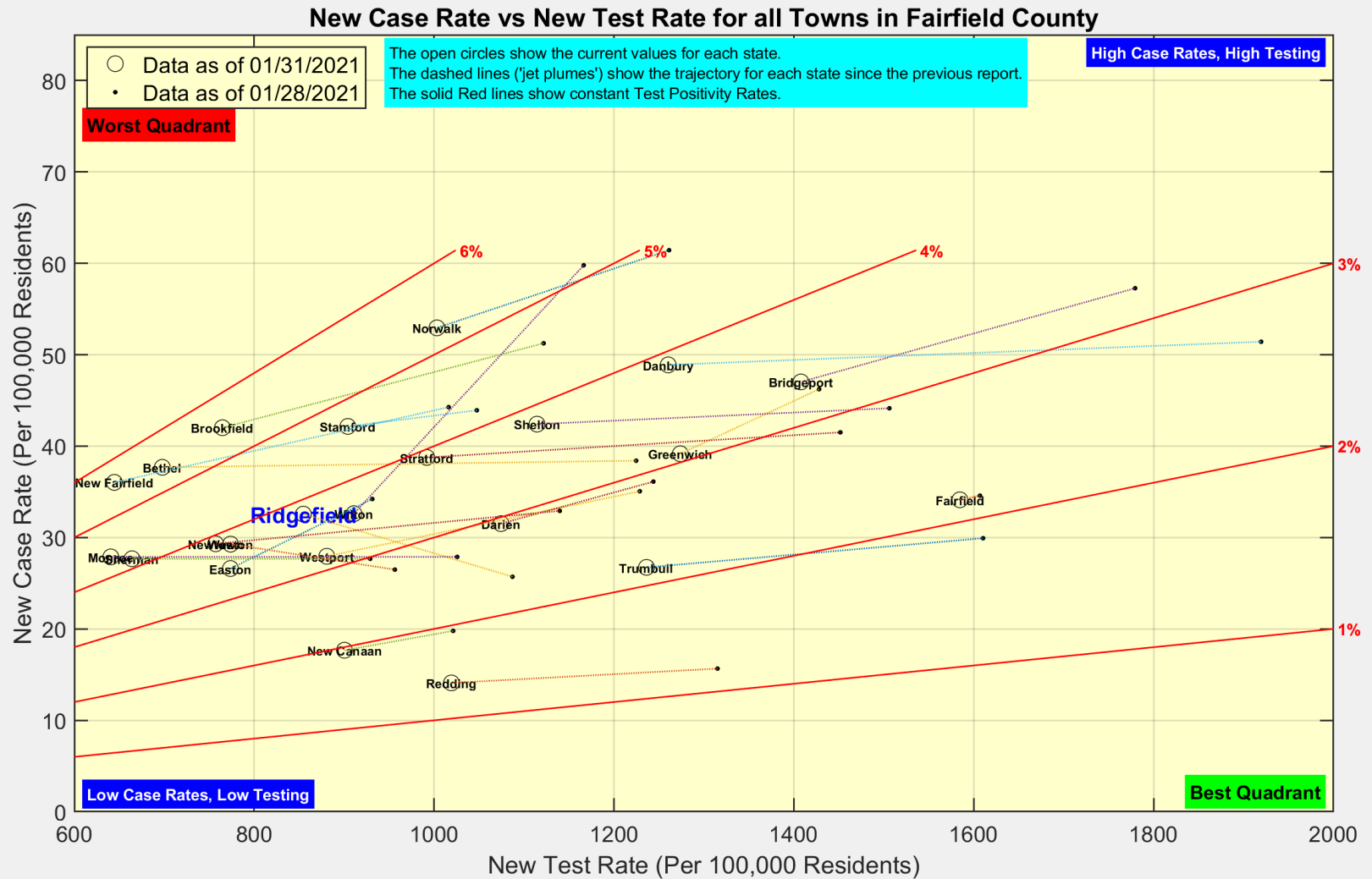


Data Source: <https://covidtracking.com/data/api>



Ridgefield COVID-19 Task Force

Here is the latest view of New Cases and New Tests for all towns in Fairfield County



Data Source: <https://data.ct.gov>



Ridgefield COVID-19 Task Force