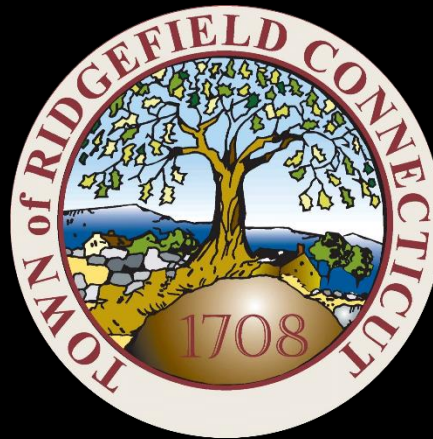


# Ridgefield COVID Report

## Ridgefield COVID-19 Task Force



Data downloaded from  
<https://data.ct.gov/browse?category=Health+and+Human+Services>

Data downloaded on Thursday, January 07, 2021 at 4:00 PM  
This reflects data through Wednesday, January 06, 2021

## Ridgefield Summary

Data downloaded on Thursday, 01/07/2021 at 4:00 PM

Ridgefield	Wednesday 01/06/2021	Tuesday 01/05/2021
Number of New Cases Reported	13	9
New Case Rate (per 100,000 Residents)	<b>39.4</b>	34.8
New Test Rate (per 100,000 Residents)	857.4	784.9
Test Positivity	4.6%	4.4%
Fairfield County	Wednesday 01/06/2021	Tuesday 01/05/2021
Number of New Cases Reported	831	606
New Case Rate (per 100,000 Residents)	62.2	59.3
New Test Rate (per 100,000 Residents)	975.8	887.5
Test Positivity	6.4%	6.7%
Currently Hospitalized	280	290

Data Source: <https://data.ct.gov>. This report reflects data reported to the State through Wednesday 01/06/2021. The New Case Rate, New Test Rate, and Test Positivity are computed using 7-day moving averages.

Our data science confirms CDC and other studies:

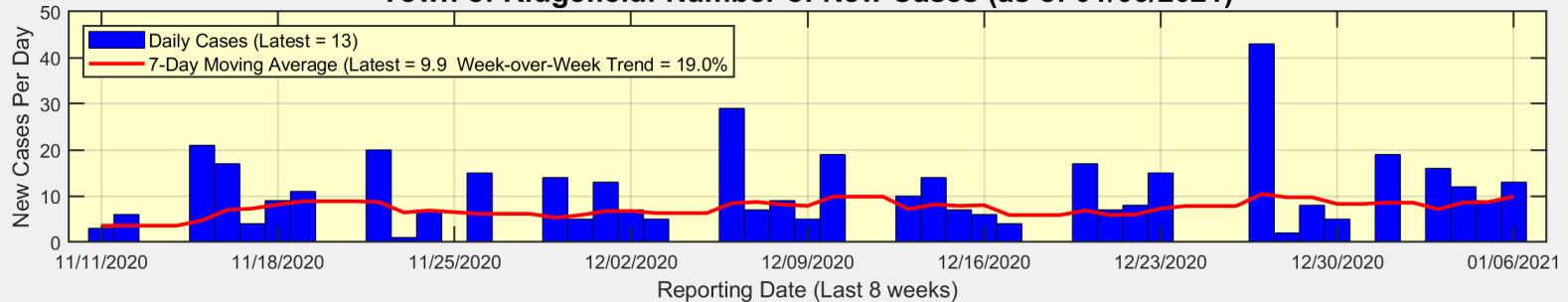
***Wearing a Mask Reduces COVID Case Rates***



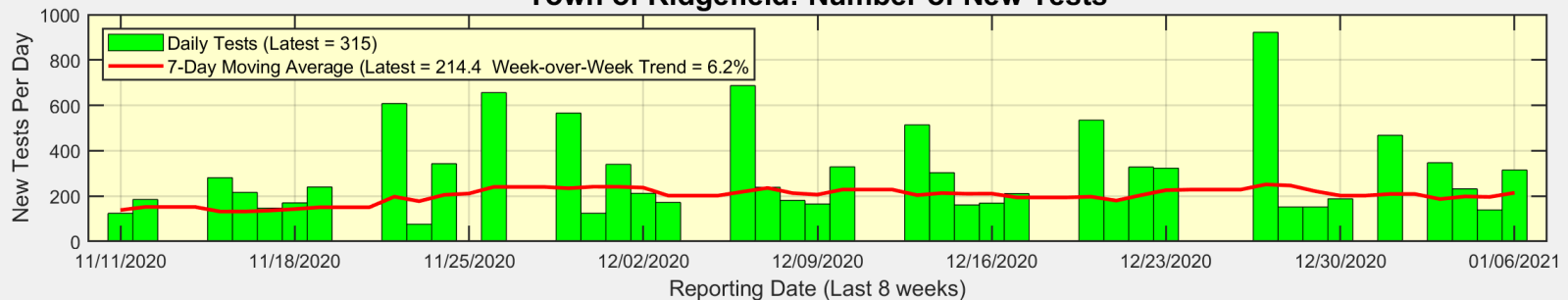
Ridgefield COVID-19 Task Force

# There were 13 new cases reported for Ridgefield on Wednesday

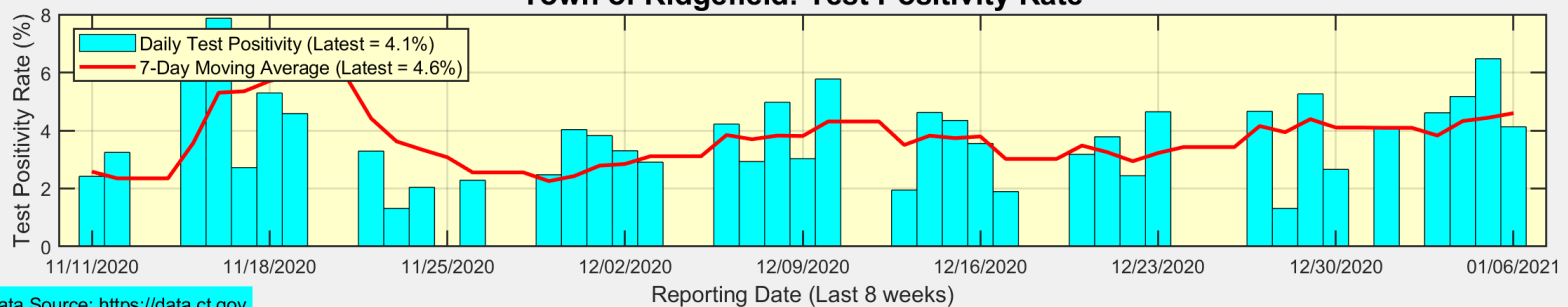
**Town of Ridgefield: Number of New Cases (as of 01/06/2021)**



**Town of Ridgefield: Number of New Tests**



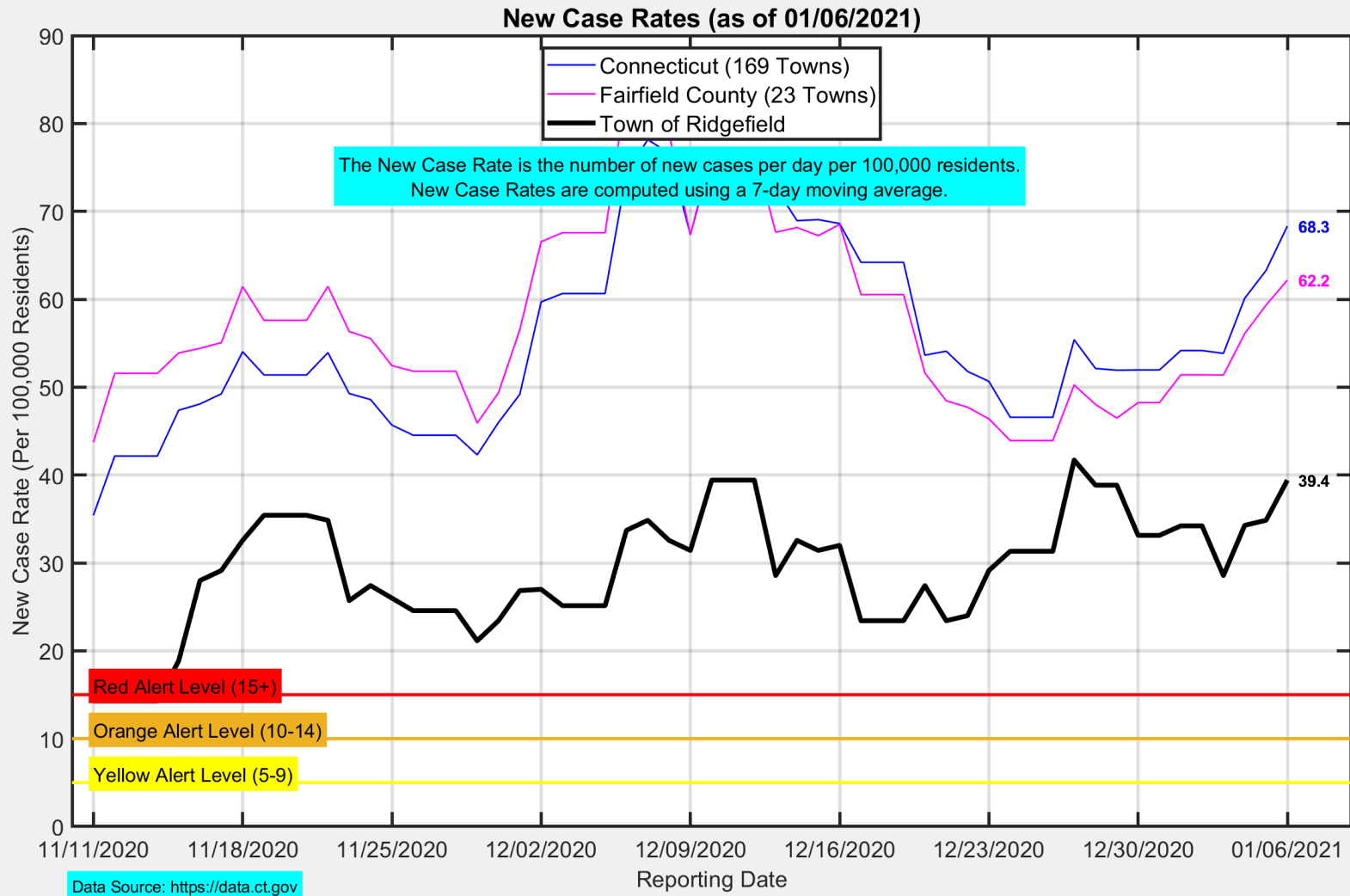
**Town of Ridgefield: Test Positivity Rate**



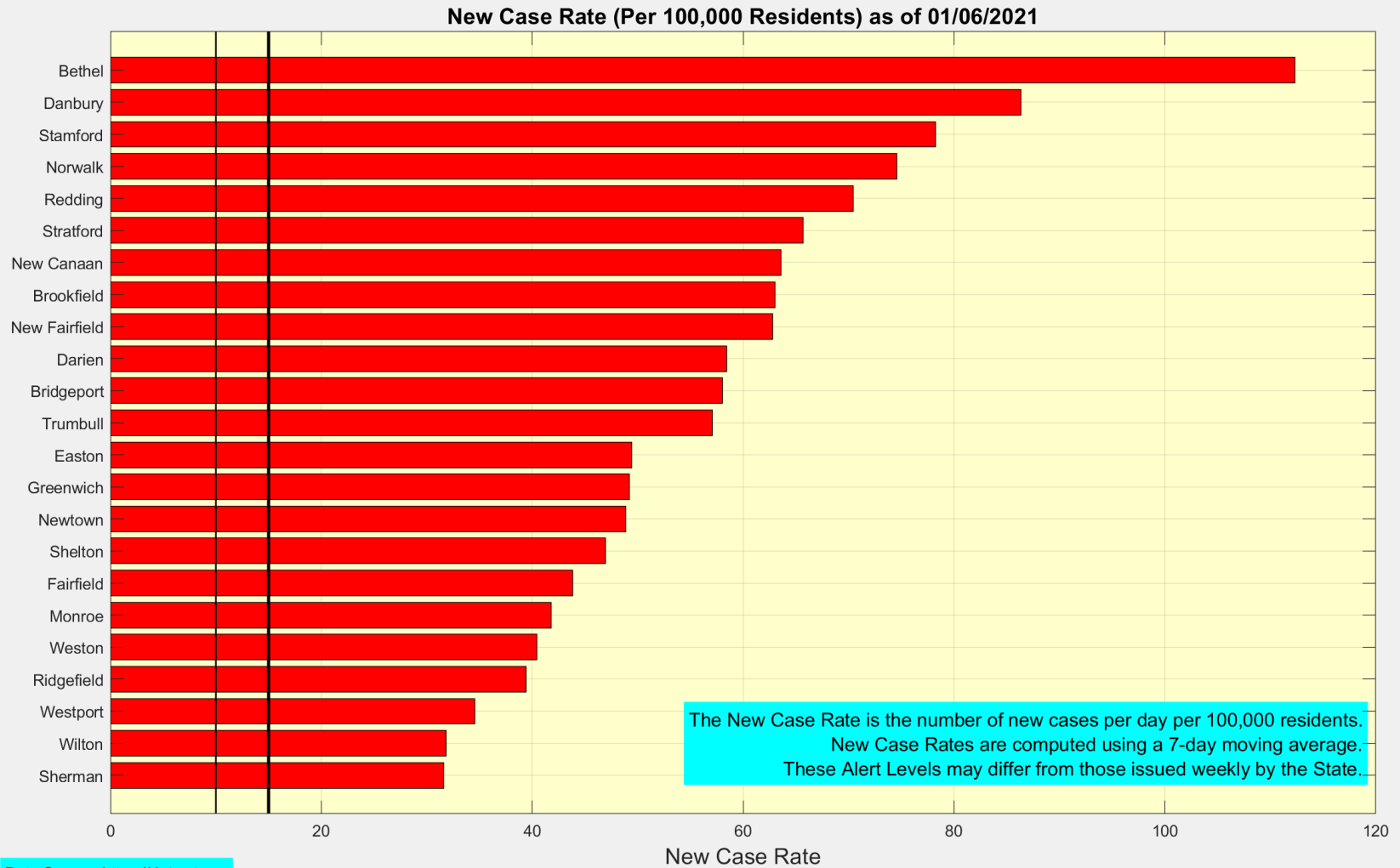
Data Source: <https://data.ct.gov>



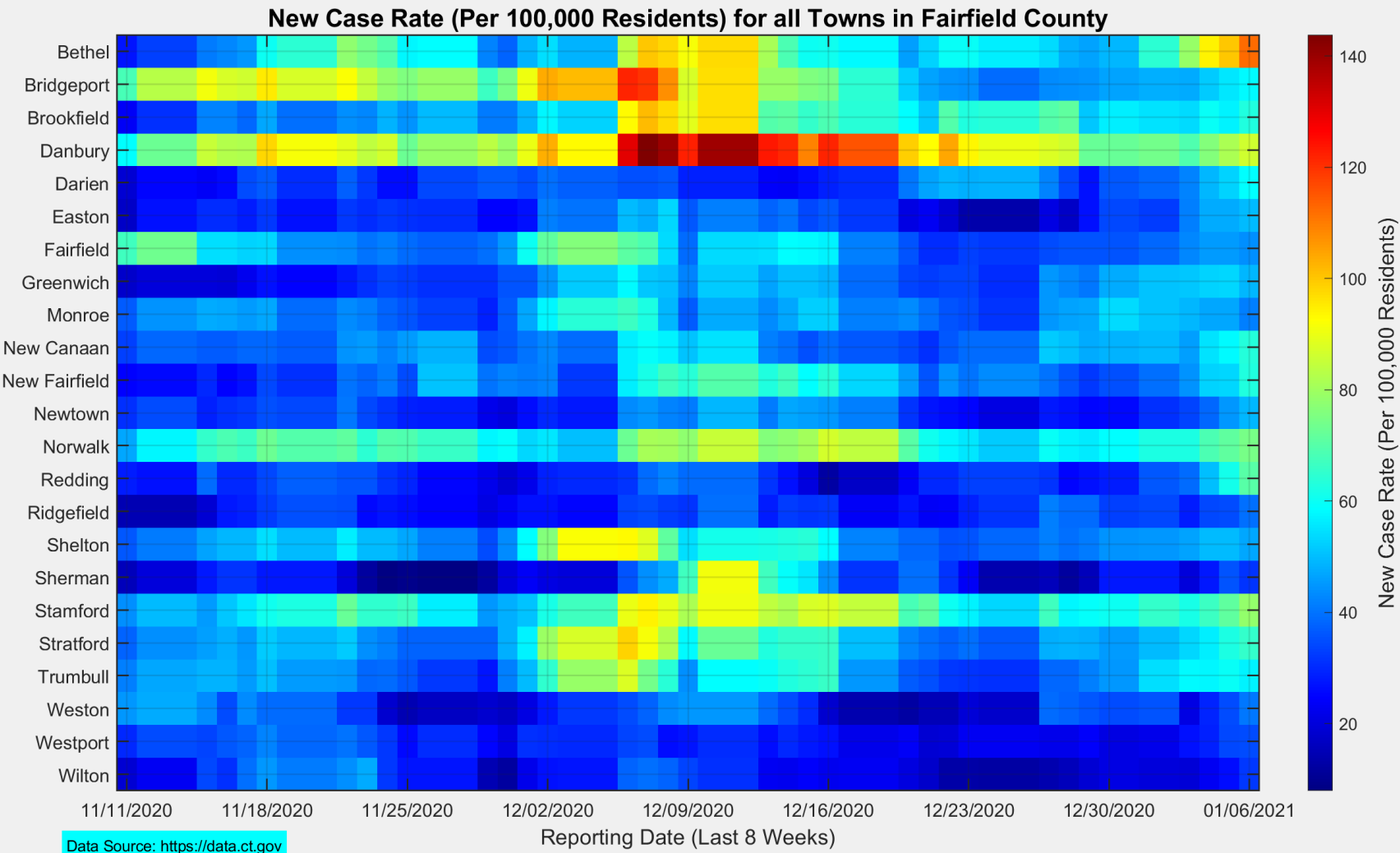
## The New Case Rate in Ridgefield increased to 39.4



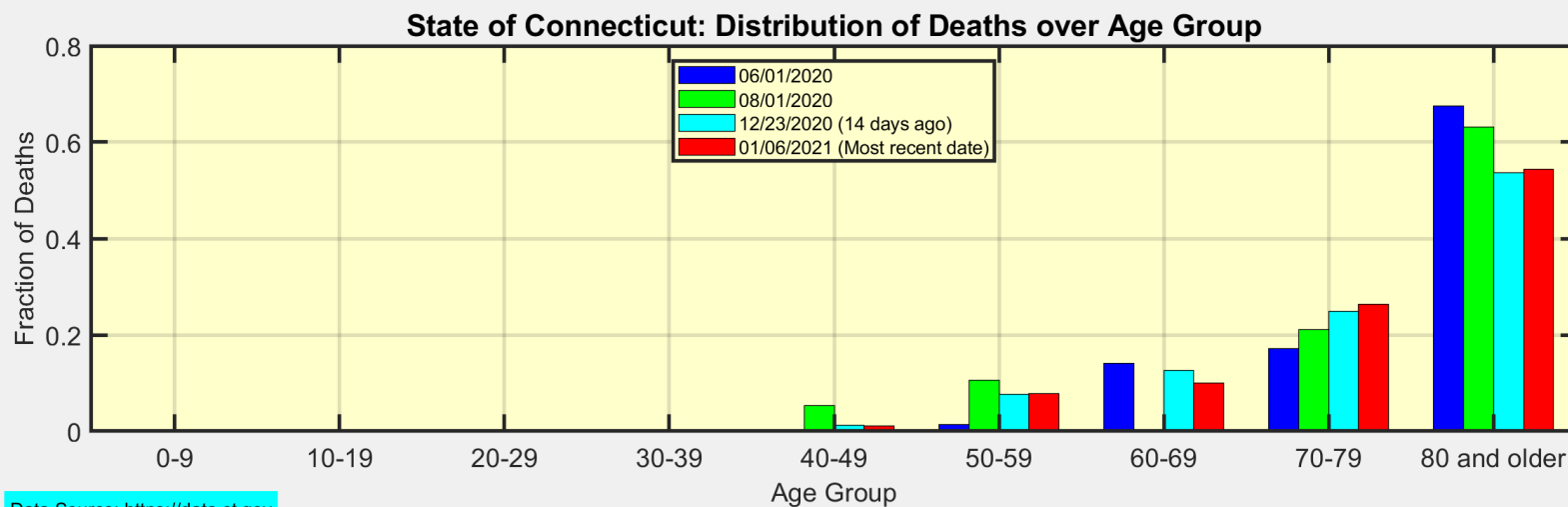
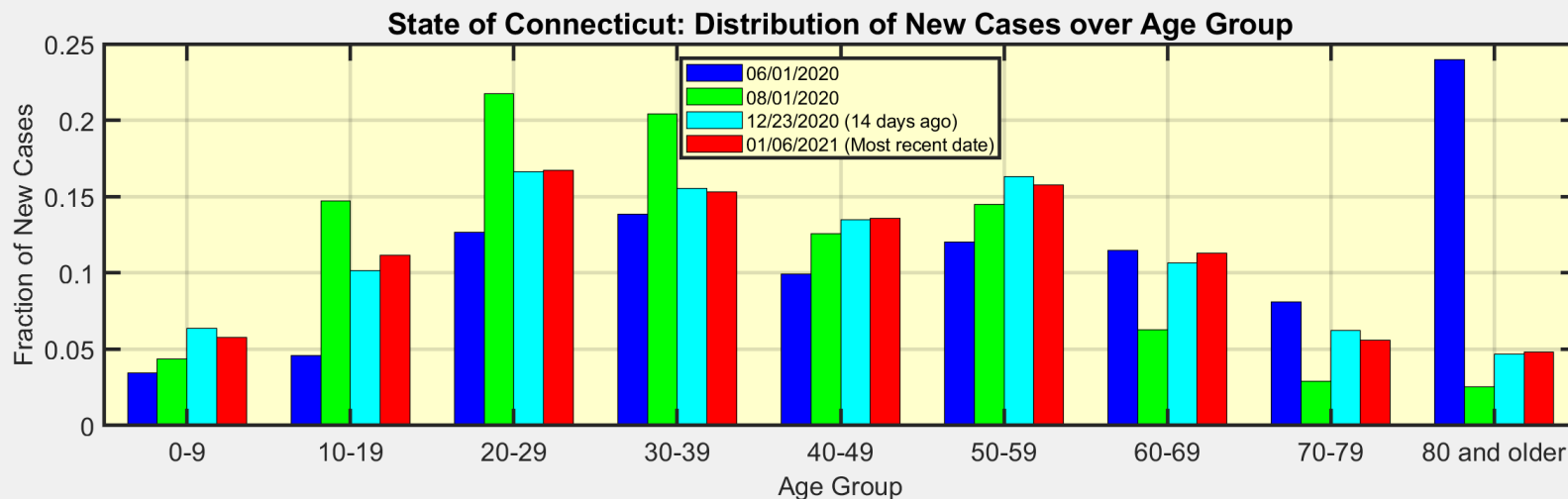
# Here are the latest New Case Rates for all towns in Fairfield County



This heat map shows the progression of New Case Rates for all towns in Fairfield County



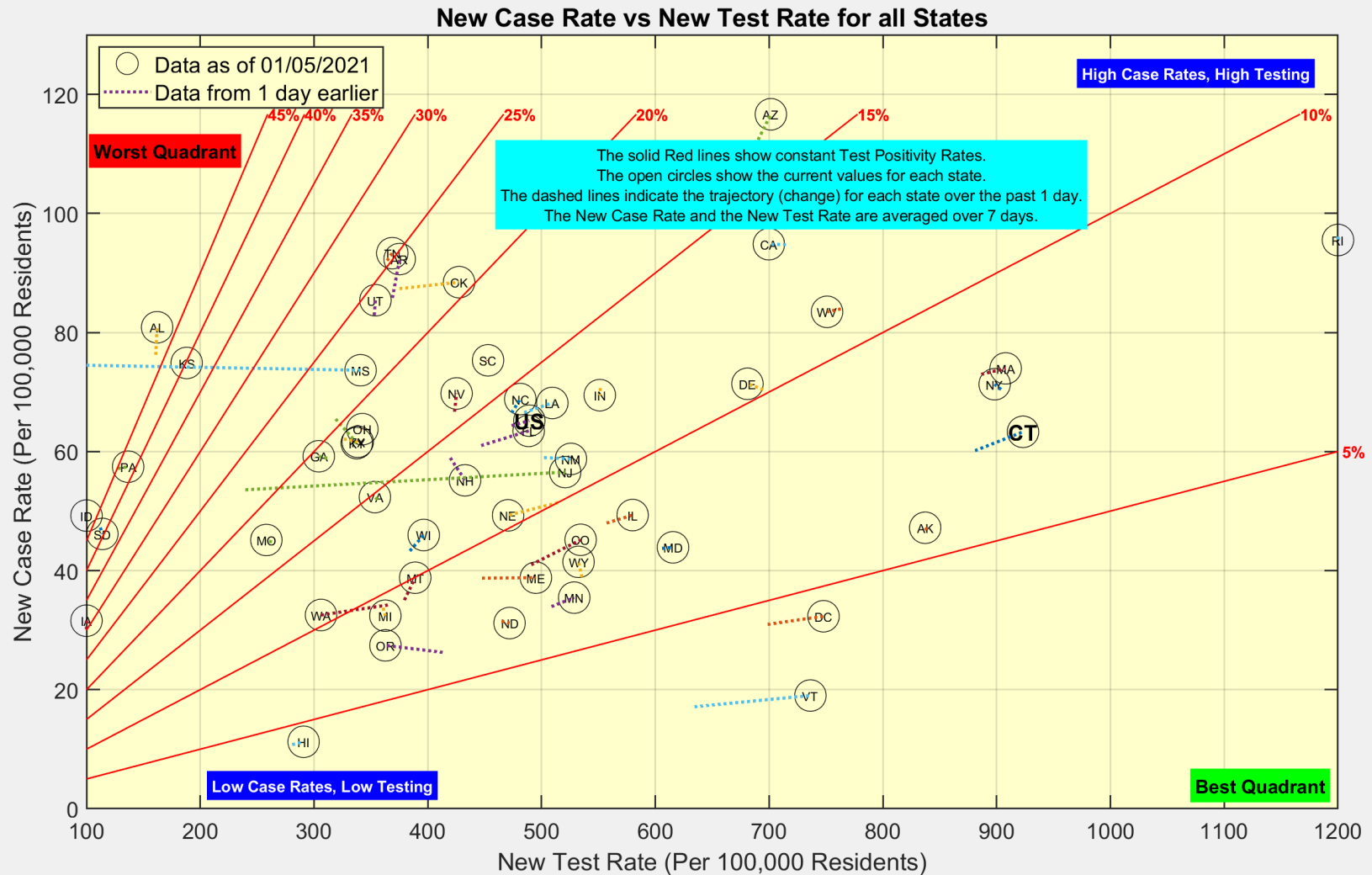
# These are the distributions of New Cases and Deaths over age group for the State of Connecticut



Data Source: <https://data.ct.gov>



# Here is the latest view of New Cases and New Tests for all states



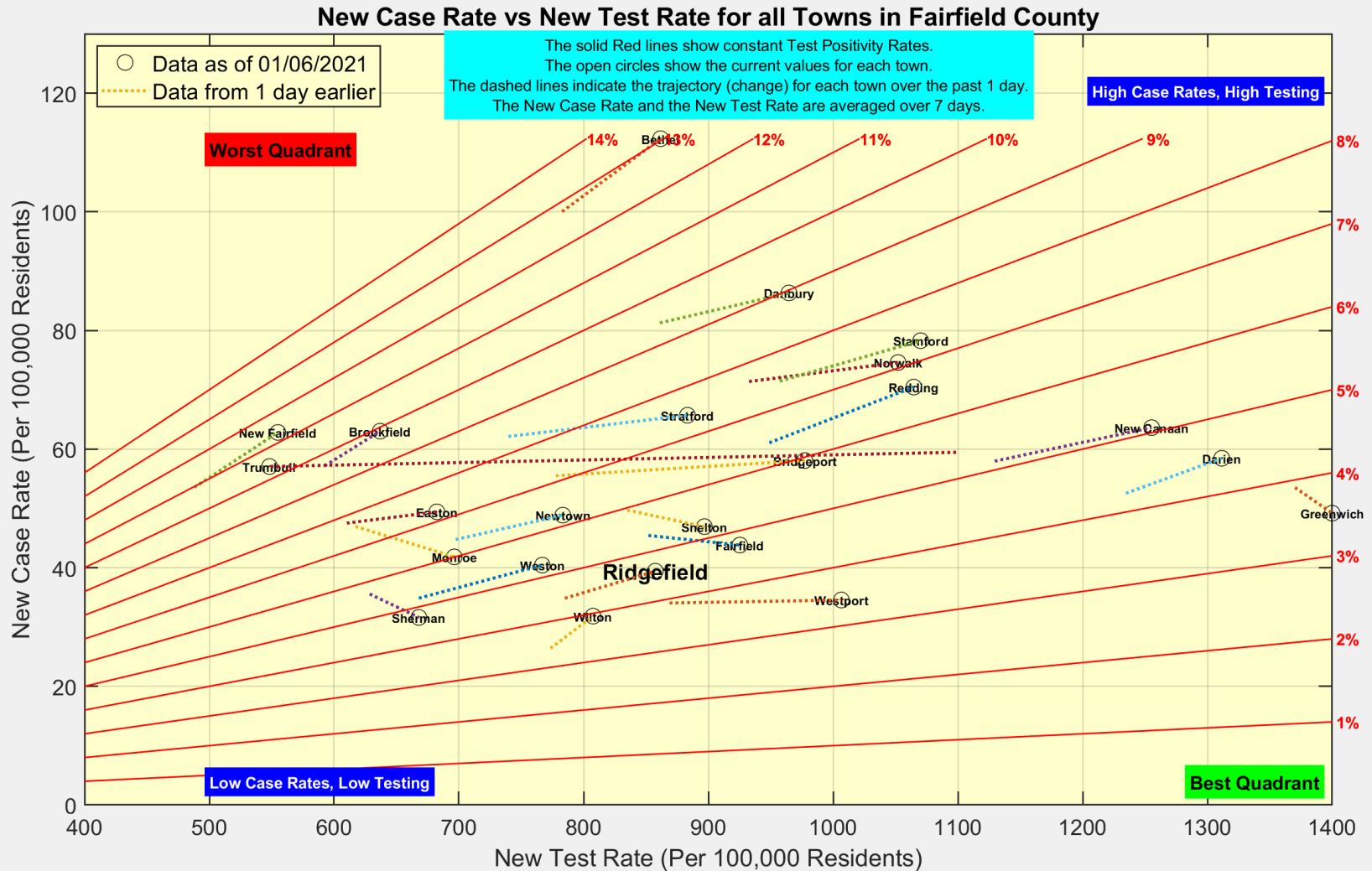
Data Source: <https://covidtracking.com/data/api>



**Ridgefield COVID-19 Task Force**



# Here is the latest view of New Cases and New Tests for all towns in Fairfield County



Data Source: <https://data.ct.gov>



Ridgefield COVID-19 Task Force