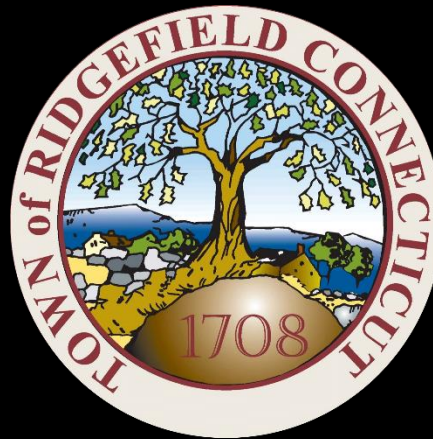


# Ridgefield COVID Report

## Ridgefield COVID-19 Task Force



Data downloaded from  
<https://data.ct.gov/browse?category=Health+and+Human+Services>

Data downloaded on Tuesday, January 05, 2021 at 4:00 PM  
This reflects data through Monday, January 04, 2021

## Ridgefield Summary

Data downloaded on Tuesday, 01/05/2021 at 4:00 PM

Ridgefield	Monday 01/04/2021	Sunday 01/03/2021
Number of New Cases Reported	12	16
New Case Rate (per 100,000 Residents)	<b>34.3</b>	28.6
New Test Rate (per 100,000 Residents)	792.3	746.6
Test Positivity	4.3%	3.8%
Fairfield County	Monday 01/04/2021	Sunday 01/03/2021
Number of New Cases Reported	528	964
New Case Rate (per 100,000 Residents)	56.1	51.4
New Test Rate (per 100,000 Residents)	848.8	779.6
Test Positivity	6.6%	6.6%
Currently Hospitalized	293	292

**Data Source:** <https://data.ct.gov>. This report reflects data reported to the State through Monday 01/04/2021.

The New Case Rate, New Test Rate, and Test Positivity are computed using 7-day moving averages.

**NOTE: The Number of New Cases Reported for Sunday is the TOTAL over the previous TWO DAYS**

Our data science confirms CDC and other studies:

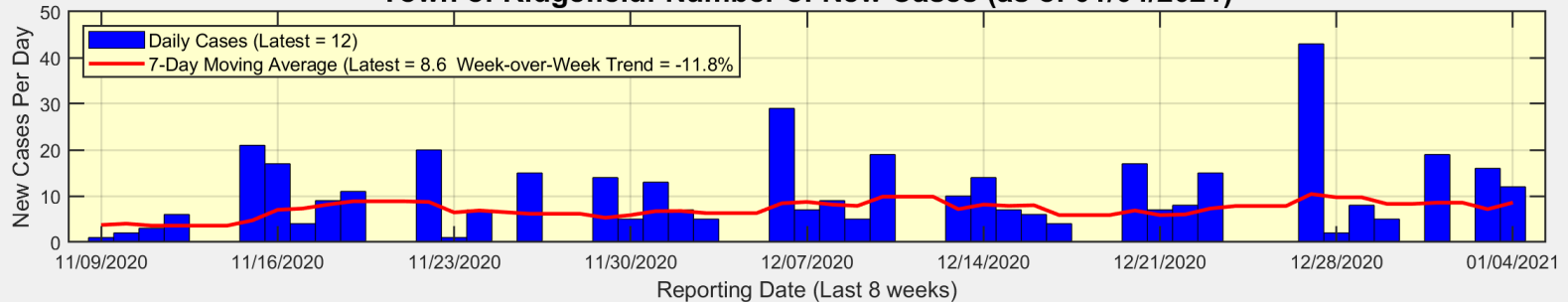
***Wearing a Mask Reduces COVID Case Rates***



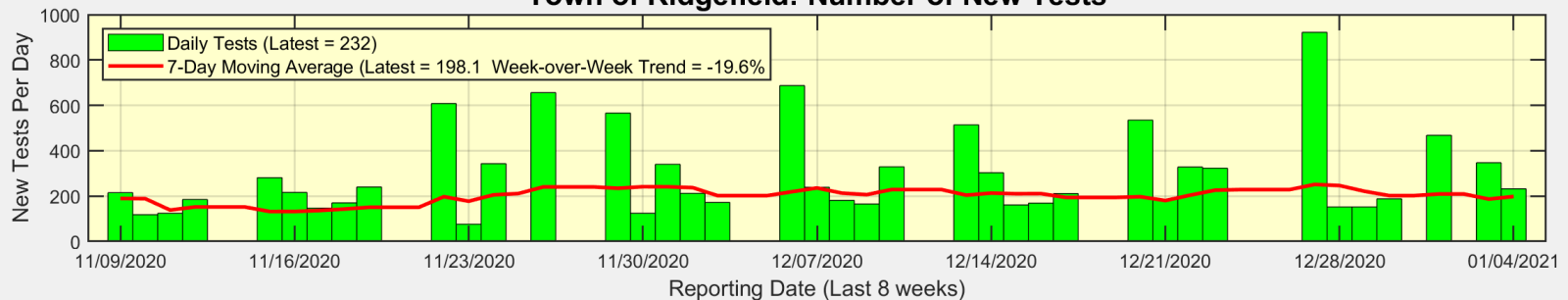
Ridgefield COVID-19 Task Force

# There were 12 new cases reported for Ridgefield on Monday

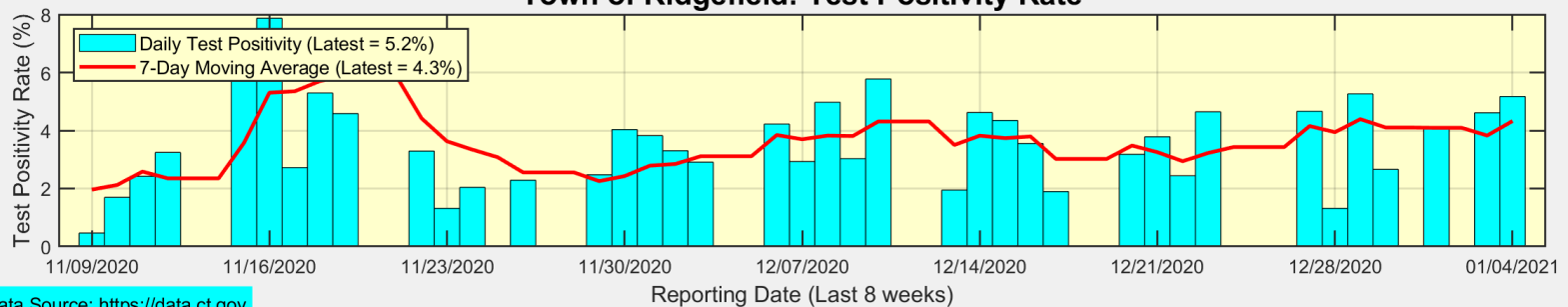
**Town of Ridgefield: Number of New Cases (as of 01/04/2021)**



**Town of Ridgefield: Number of New Tests**



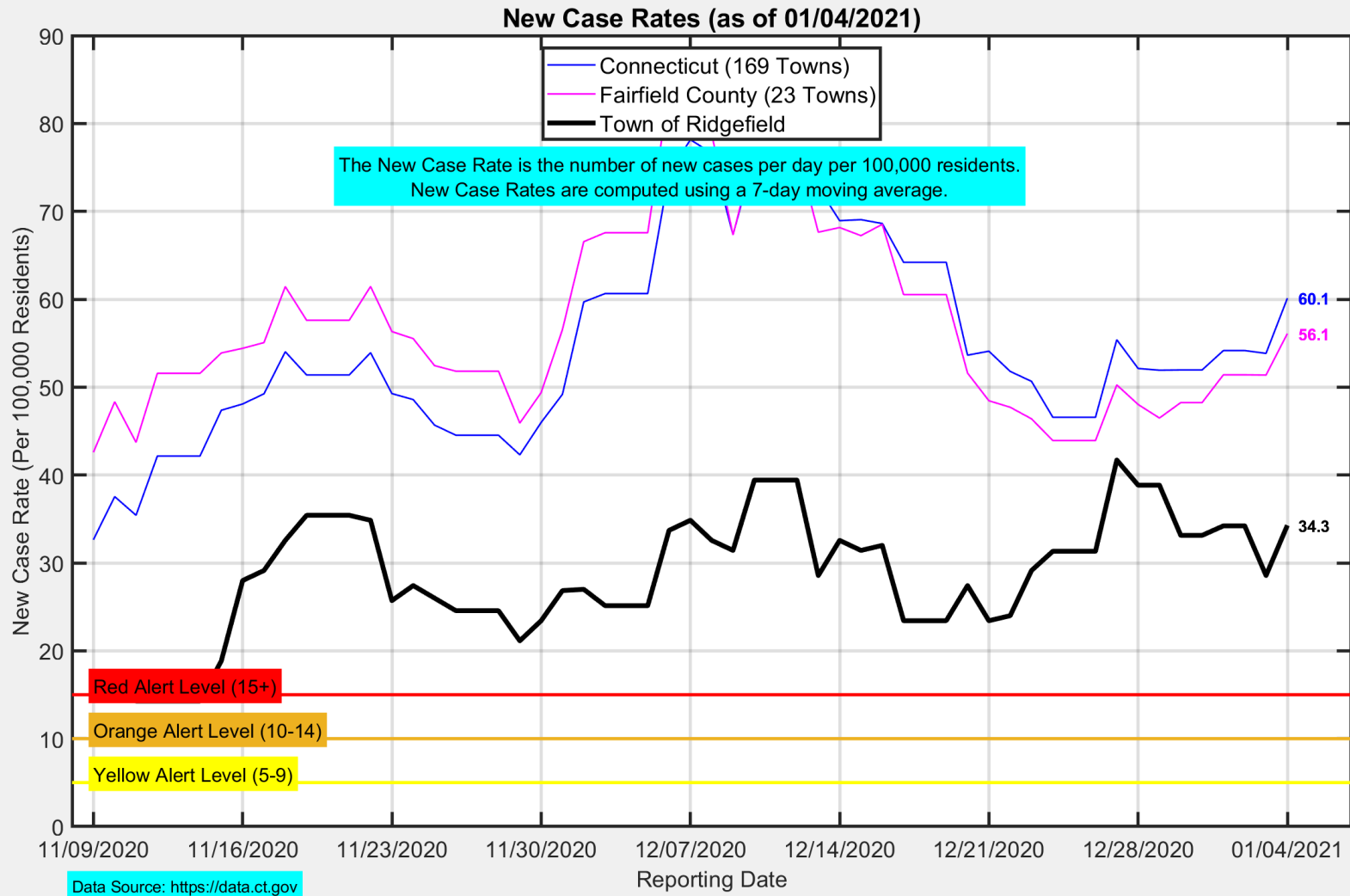
**Town of Ridgefield: Test Positivity Rate**



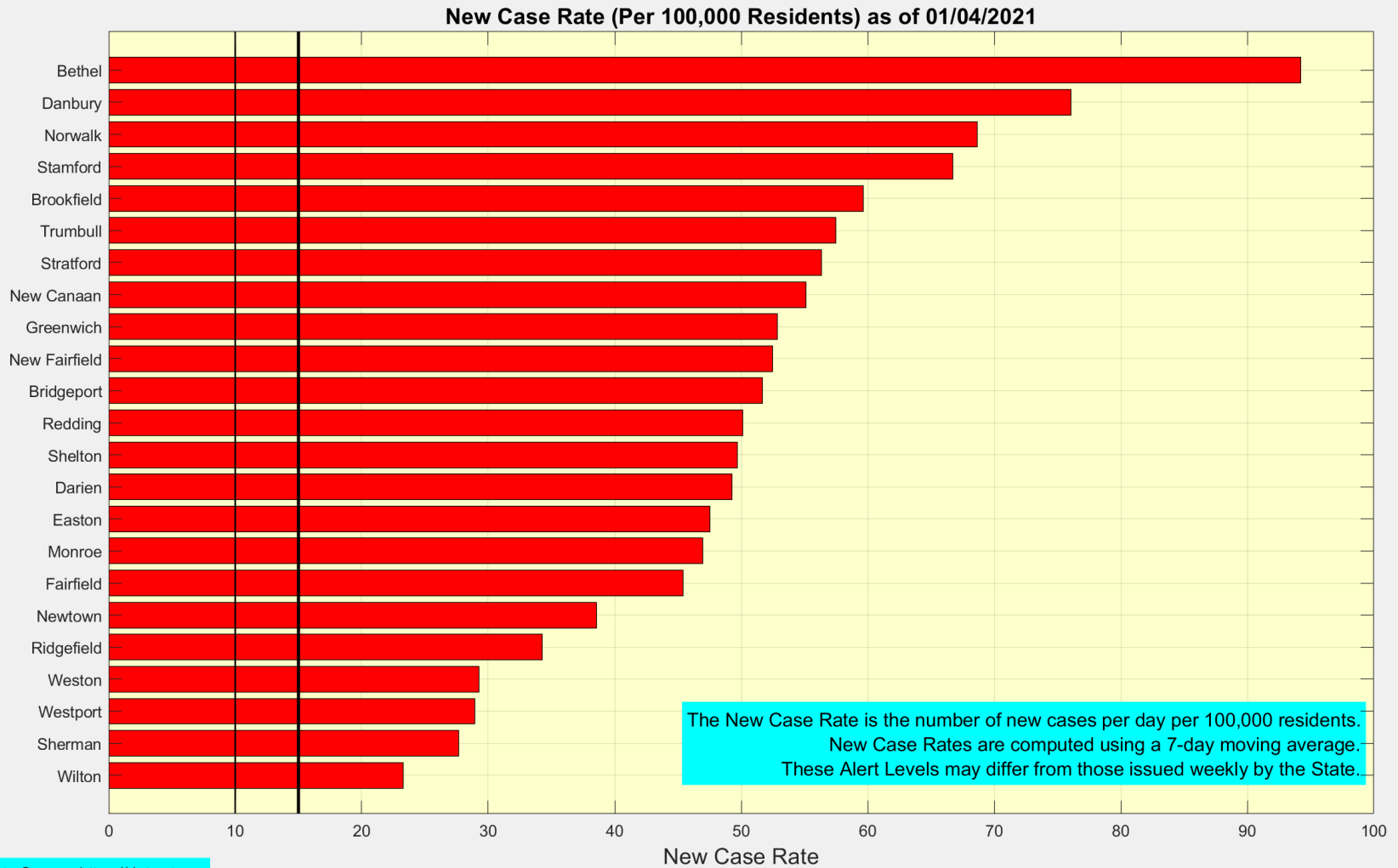
Data Source: <https://data.ct.gov>



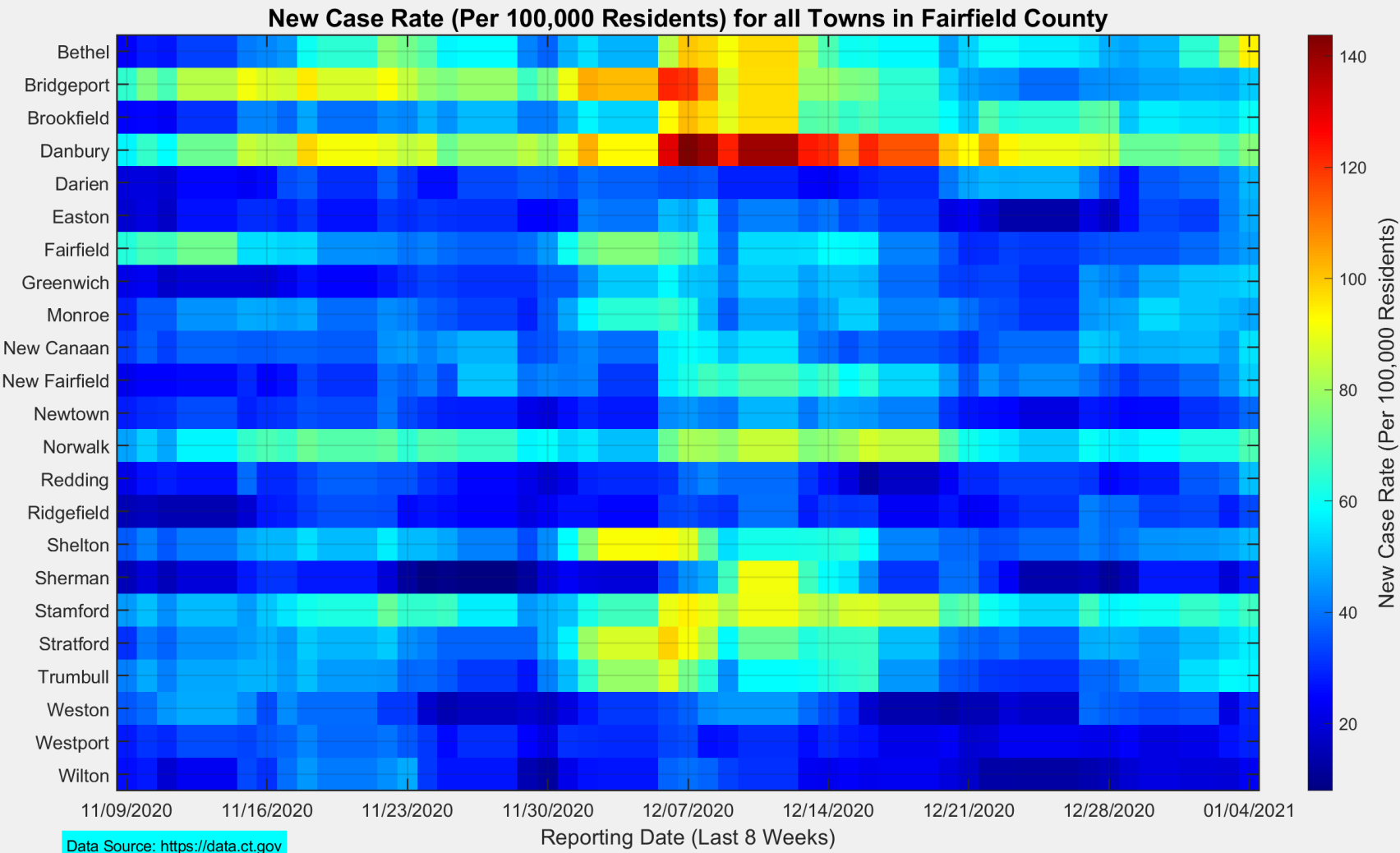
## The New Case Rate in Ridgefield increased to 34.3



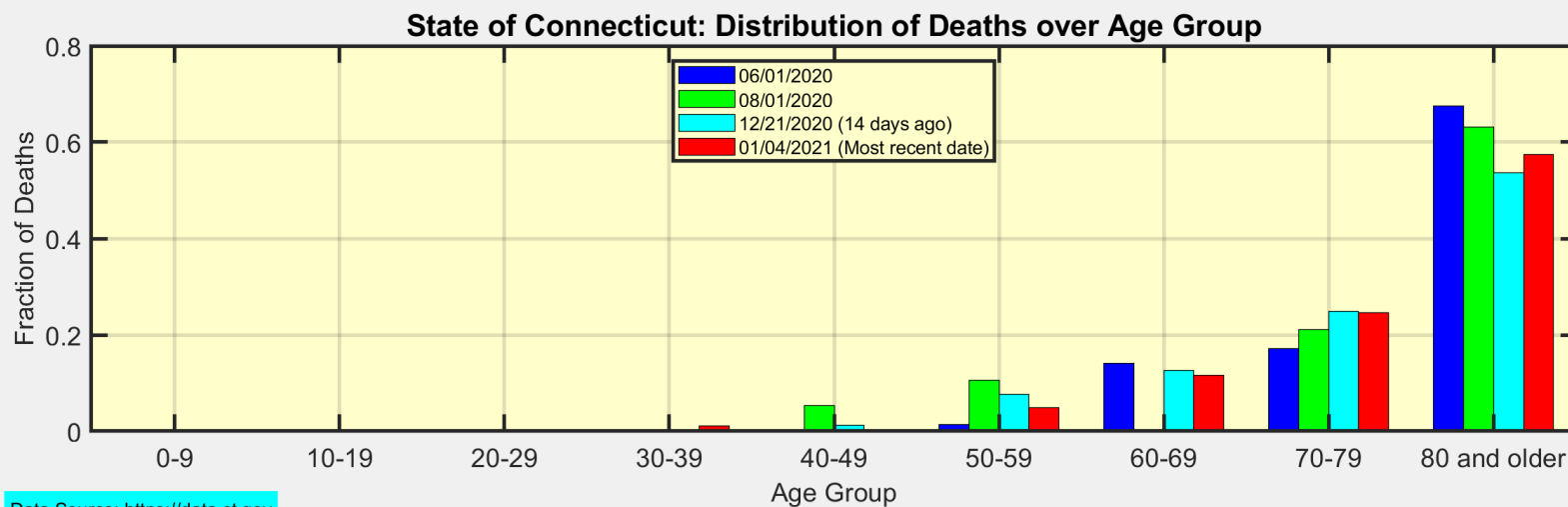
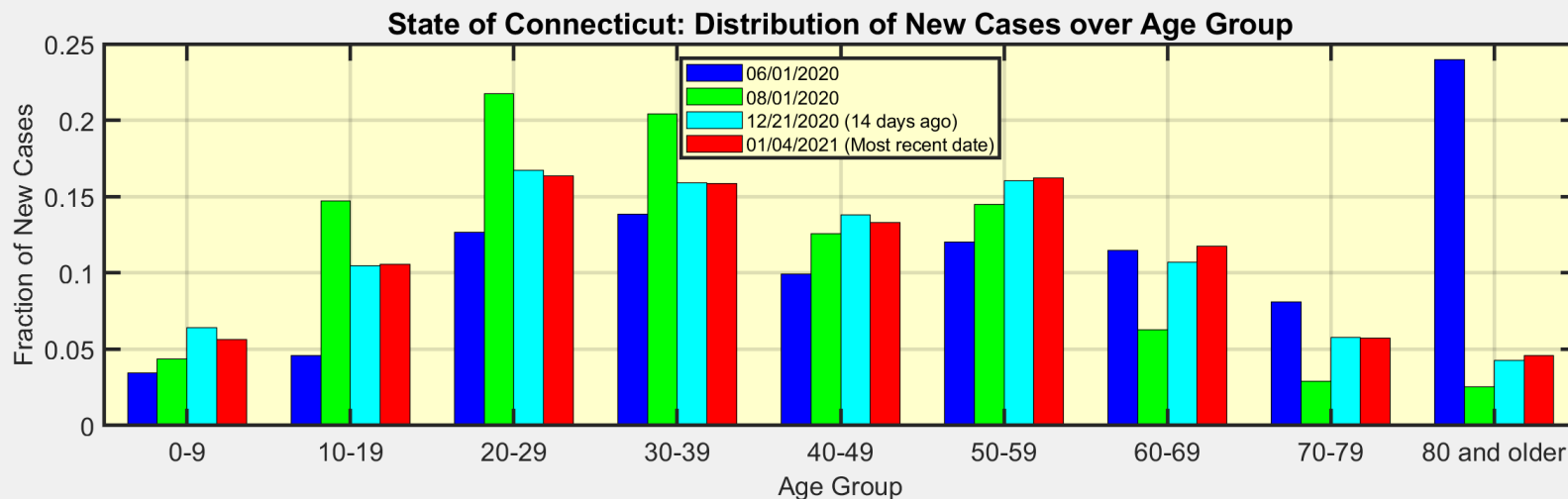
# Here are the latest New Case Rates for all towns in Fairfield County



This heat map shows the progression of New Case Rates for all towns in Fairfield County



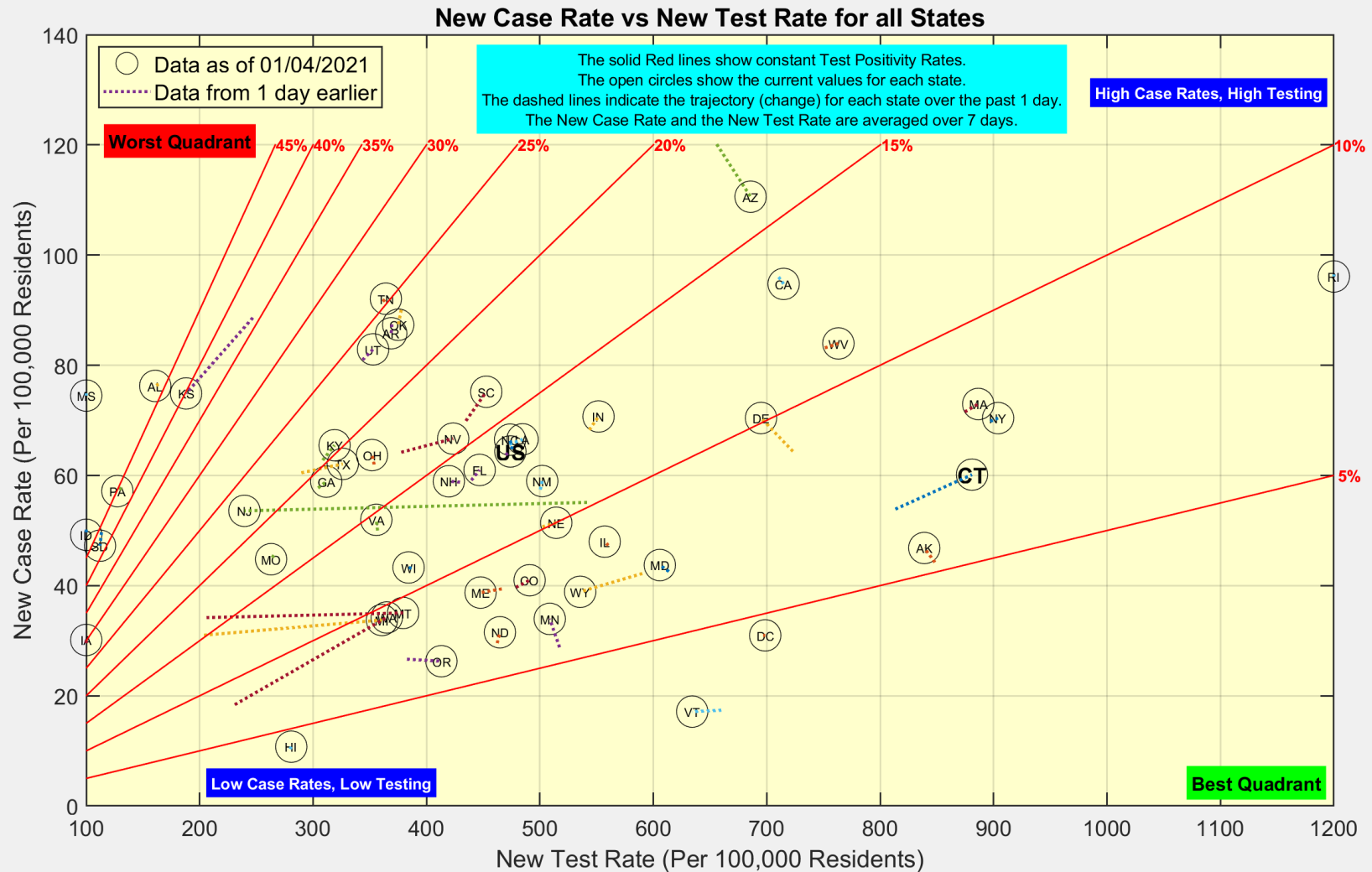
# These are the distributions of New Cases and Deaths over age group for the State of Connecticut



Data Source: <https://data.ct.gov>

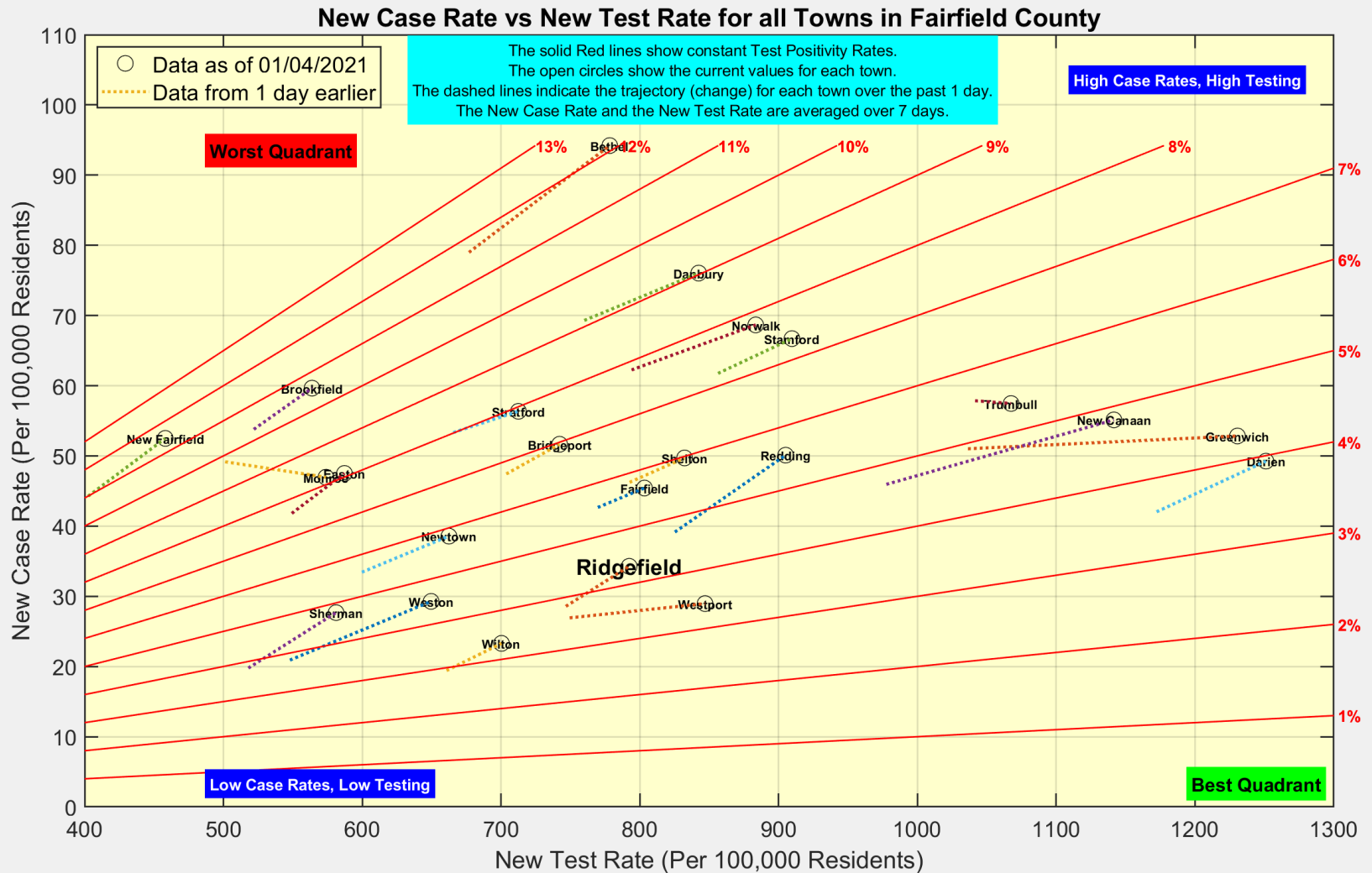


# Here is the latest view of New Cases and New Tests for all states





# Here is the latest view of New Cases and New Tests for all towns in Fairfield County



Data Source: <https://data.ct.gov>



Ridgefield COVID-19 Task Force