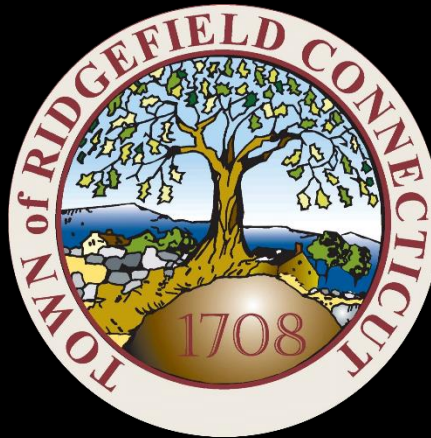


Ridgefield COVID Report

Ridgefield COVID-19 Task Force



Data downloaded from
<https://data.ct.gov/browse?category=Health+and+Human+Services>

Data downloaded on Monday, January 04, 2021 at 4:00 PM
This reflects data through Sunday, January 03, 2021

Ridgefield Summary

Data downloaded on Monday, 01/04/2021 at 4:00 PM

Ridgefield	Sunday 01/03/2021	Friday 01/01/2021
Number of New Cases Reported	16	19
New Case Rate (per 100,000 Residents)	28.6	34.2
New Test Rate (per 100,000 Residents)	746.6	836.2
Test Positivity	3.8%	4.1%
Fairfield County	Sunday 01/03/2021	Friday 01/01/2021
Number of New Cases Reported	964	1179
New Case Rate (per 100,000 Residents)	51.4	51.4
New Test Rate (per 100,000 Residents)	779.6	787.9
Test Positivity	6.6%	6.5%
Currently Hospitalized	292	264

Data Source: <https://data.ct.gov>. This report reflects data reported to the State through Sunday 01/03/2021.

The New Case Rate, New Test Rate, and Test Positivity are computed using 7-day moving averages.

NOTE: The Number of New Cases Reported for Sunday and Friday are the TOTALS over the previous TWO DAYS

Our data science confirms CDC and other studies:

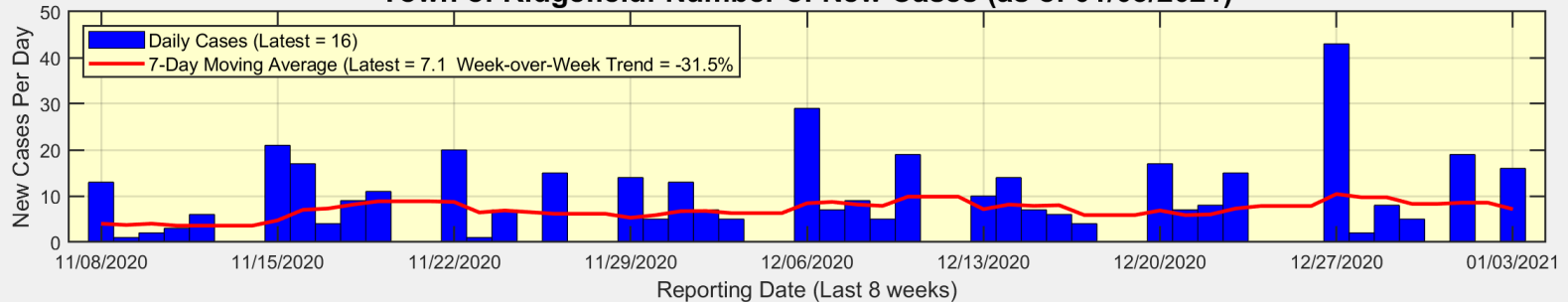
Wearing a Mask Reduces COVID Case Rates



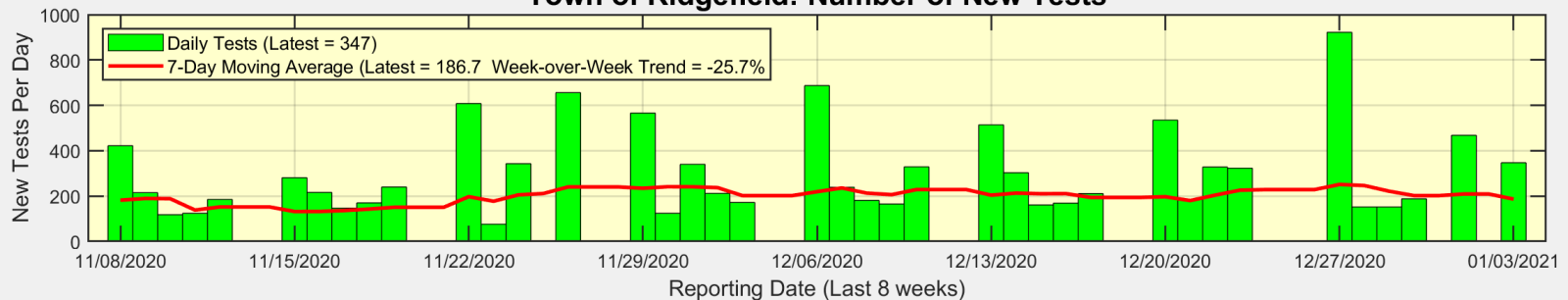
Ridgefield COVID-19 Task Force

There were 16 new cases reported in Ridgefield over the past two days

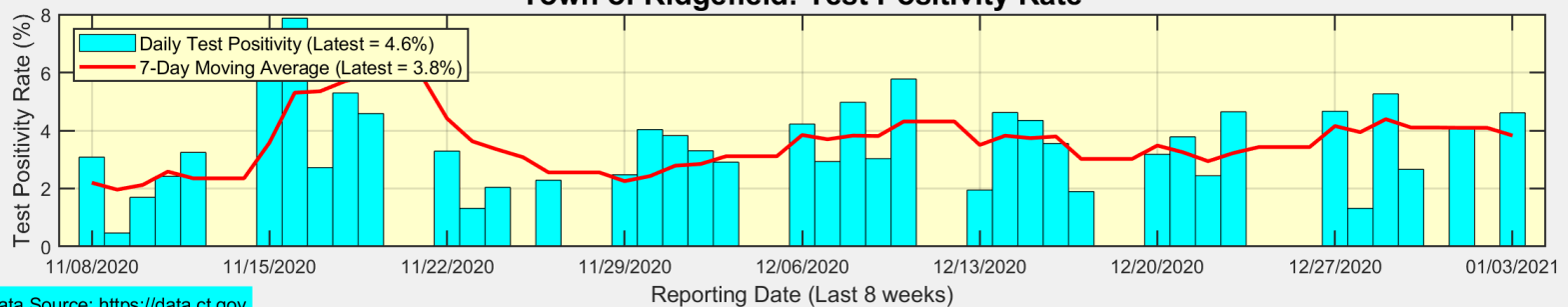
Town of Ridgefield: Number of New Cases (as of 01/03/2021)



Town of Ridgefield: Number of New Tests



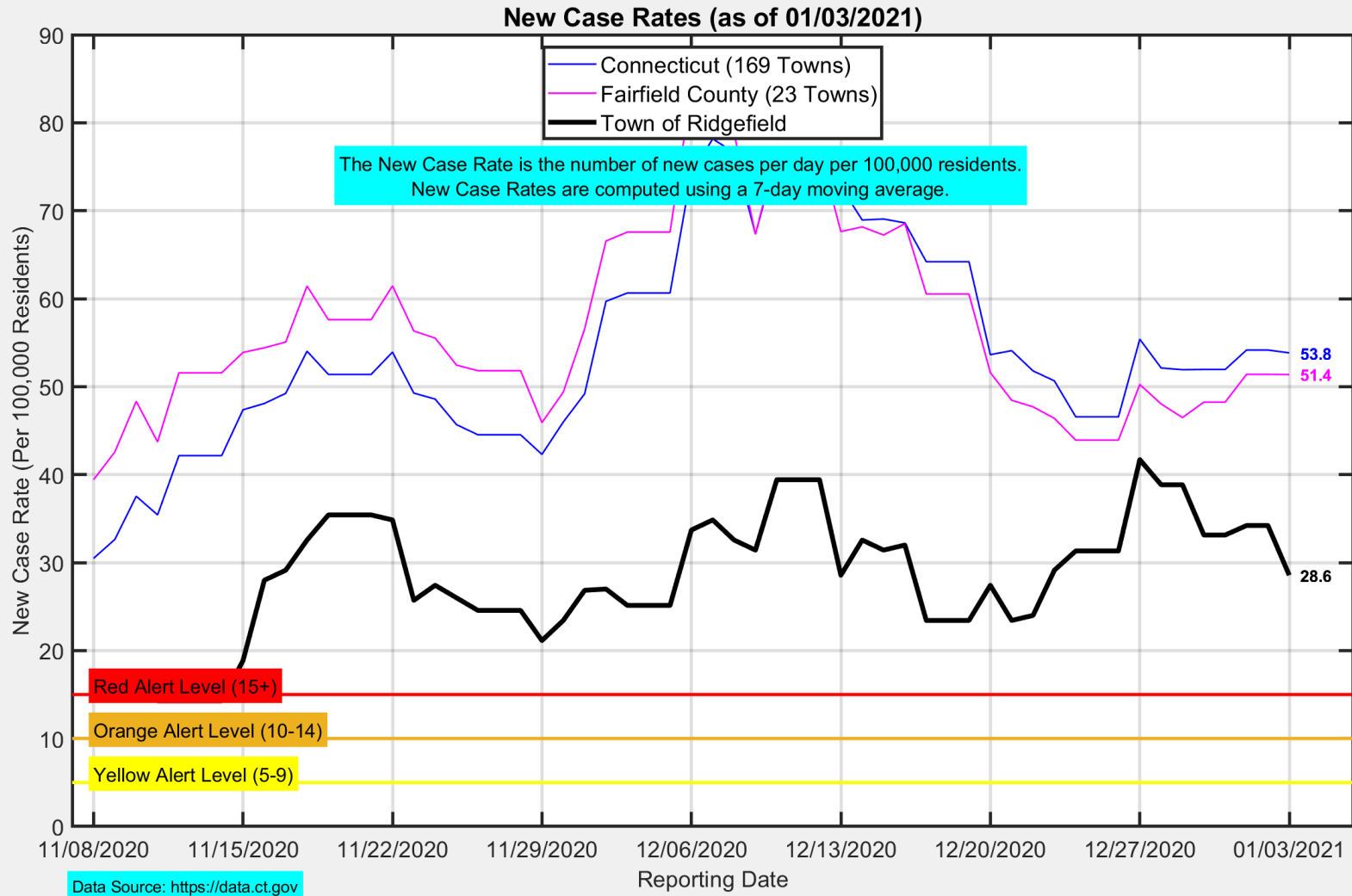
Town of Ridgefield: Test Positivity Rate



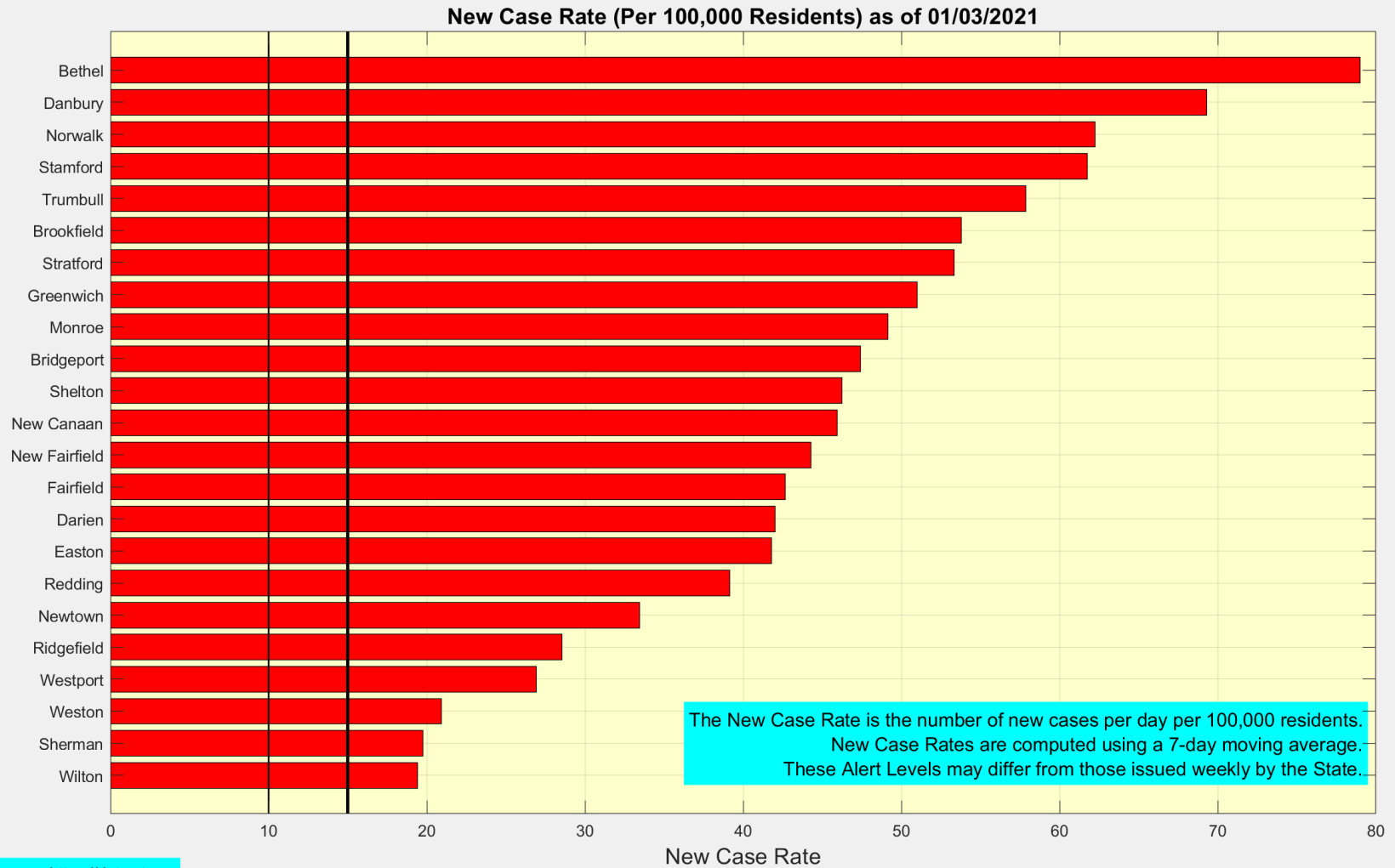
Data Source: <https://data.ct.gov>



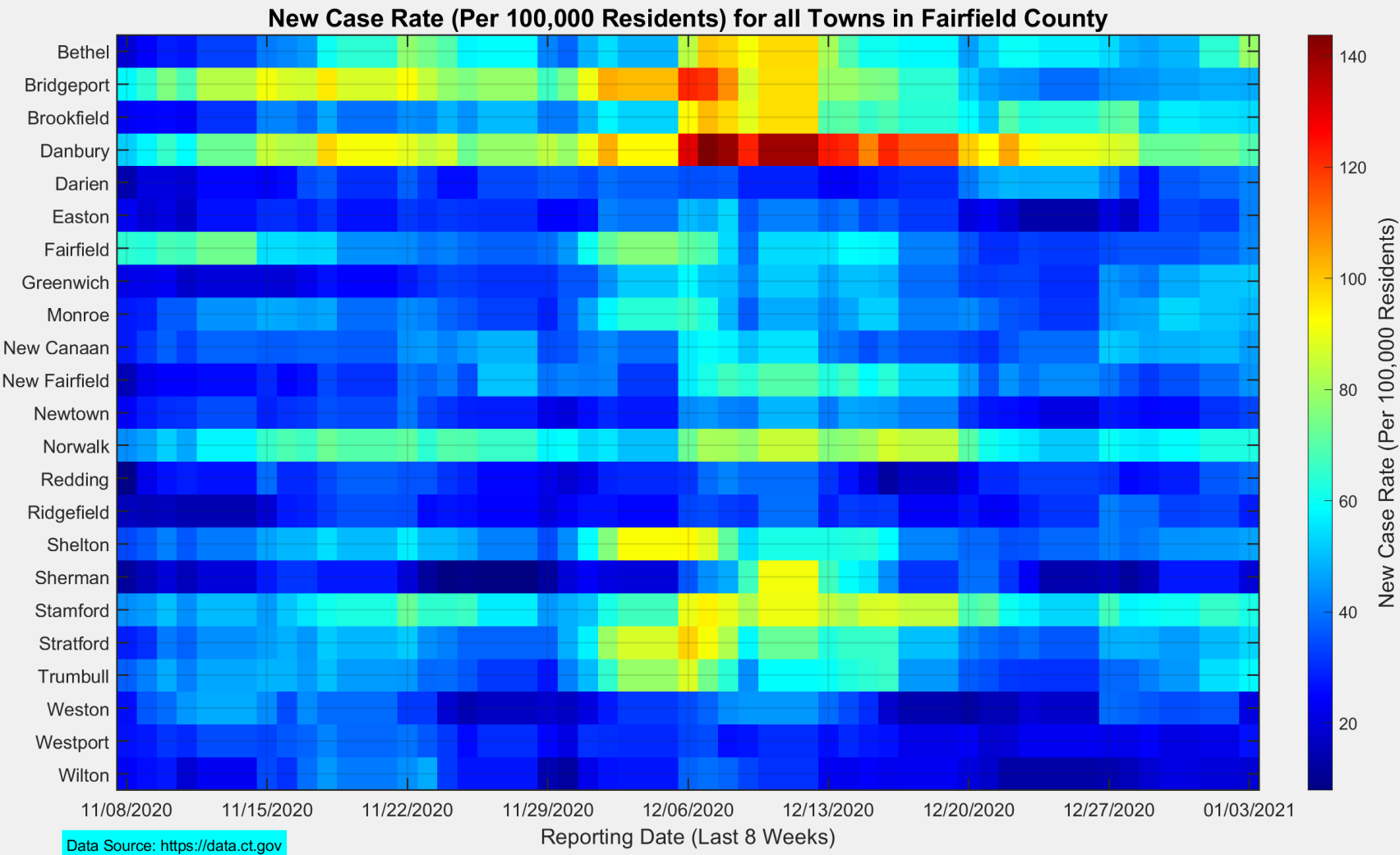
The New Case Rate in Ridgefield decreased to 28.6



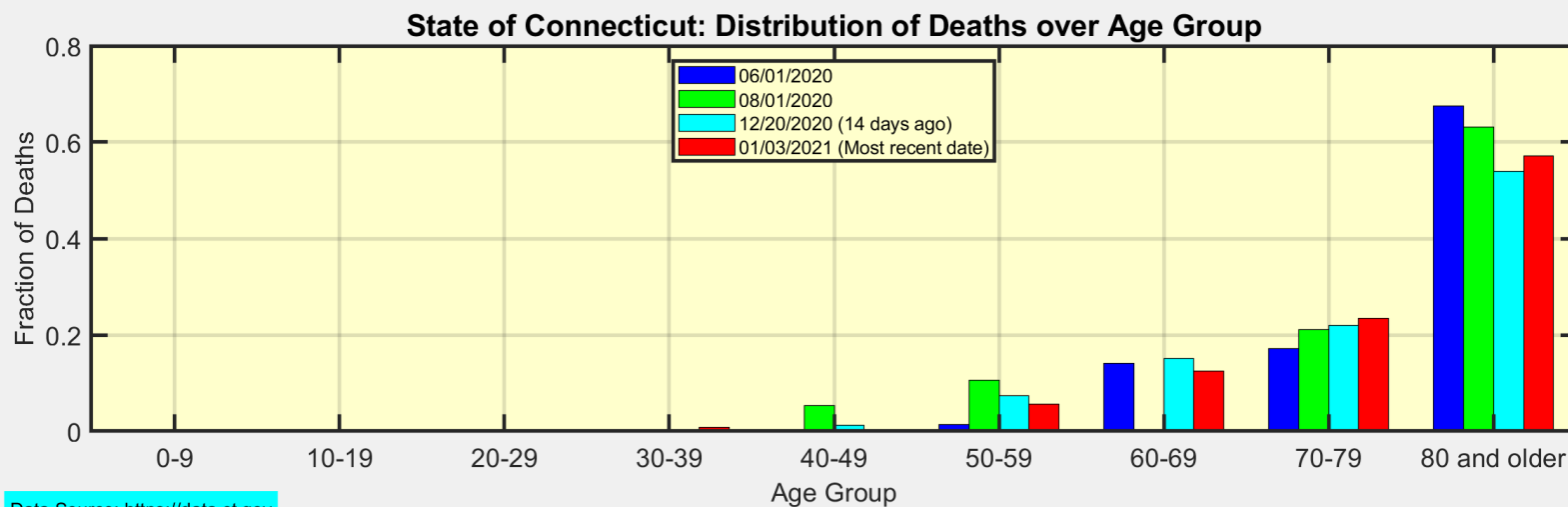
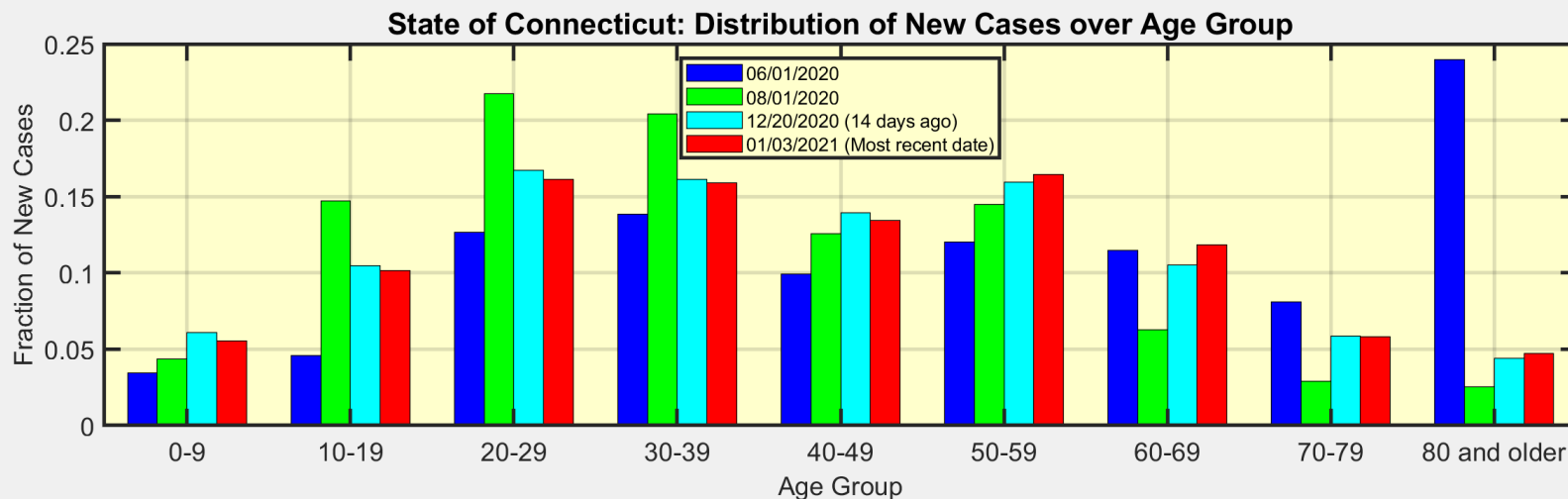
Here are the latest New Case Rates for all towns in Fairfield County



This heat map shows the progression of New Case Rates for all towns in Fairfield County



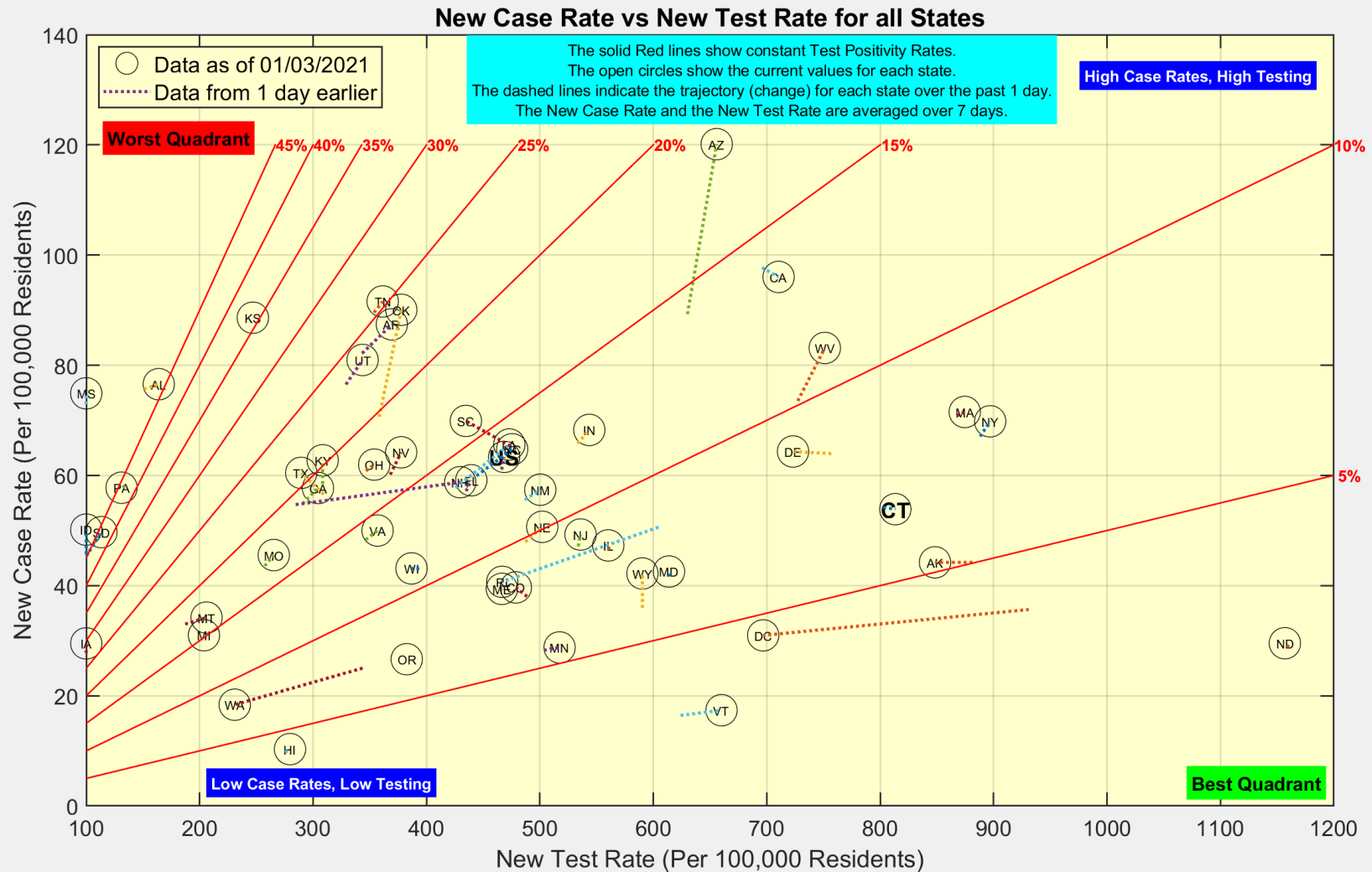
These are the distributions of New Cases and Deaths over age group for the State of Connecticut



Data Source: <https://data.ct.gov>



Here is the latest view of New Cases and New Tests for all states

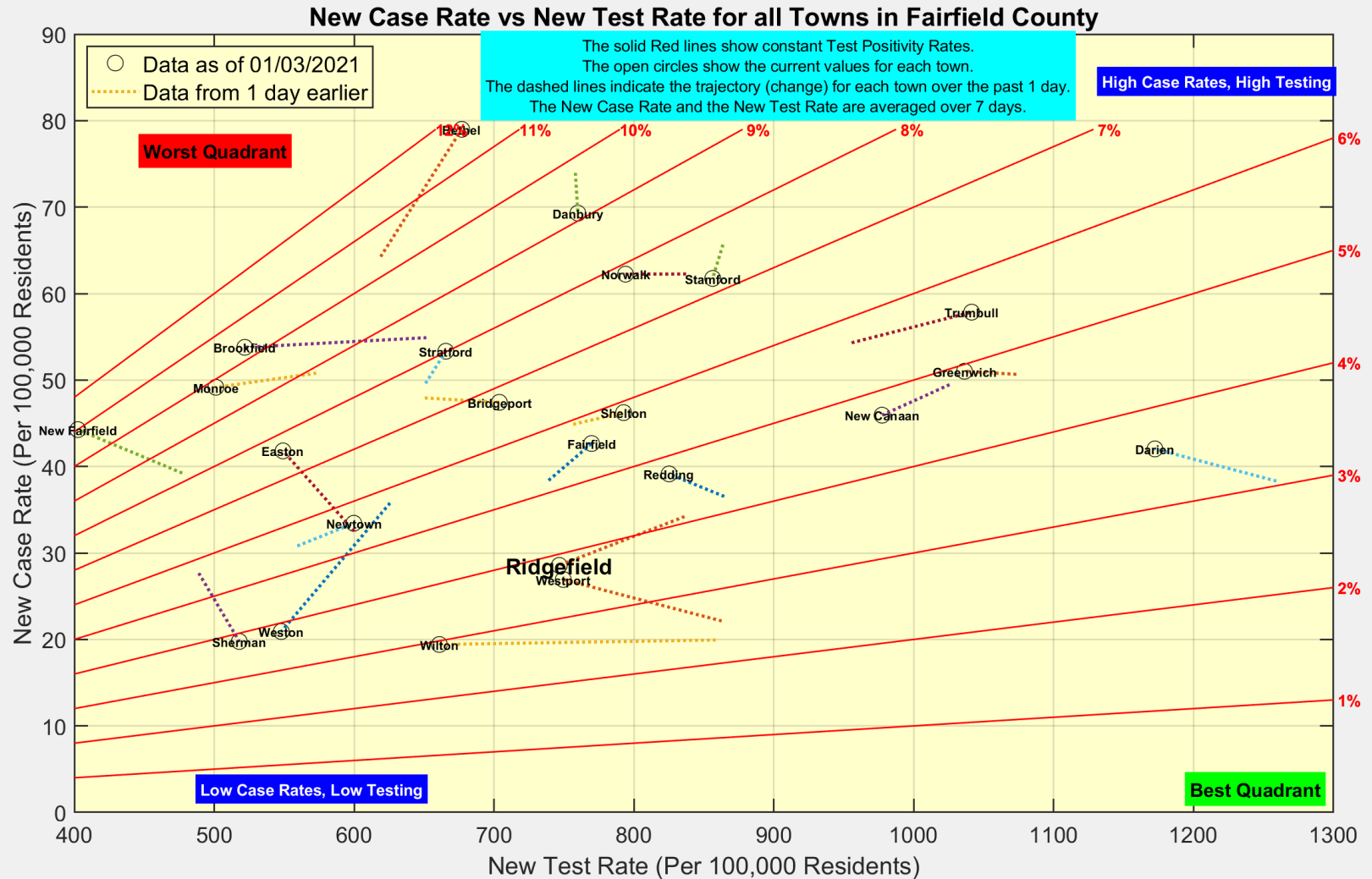


Data Source: <https://covidtracking.com/data/api>



Ridgefield COVID-19 Task Force

Here is the latest view of New Cases and New Tests for all towns in Fairfield County



Data Source: <https://data.ct.gov>



Ridgefield COVID-19 Task Force