

## Ridgefield COVID Summary

Ridgefield COVID-19 Task Force



Data downloaded from  
<https://data.ct.gov/browse?category=Health+and+Human+Services>

Data downloaded on Thursday, January 28, 2021 at 4:00 PM  
This reflects data through Wednesday, January 27, 2021

# Ridgefield Summary

Data downloaded on Thursday, 01/28/2021 at 4:00 PM

Ridgefield	Wednesday 01/27/2021	Tuesday 01/26/2021
Number of New Cases Reported	4	15
New Case Rate (per 100,000 Residents)	<b>30.8</b>	33.1
New Test Rate (per 100,000 Residents)	1116.9	1168.3
Test Positivity	2.8%	2.8%
Fairfield County	Wednesday 01/27/2021	Tuesday 01/26/2021
Number of New Cases Reported	281	650
New Case Rate (per 100,000 Residents)	48.2	50.5
New Test Rate (per 100,000 Residents)	1441.1	1424.5
Test Positivity	3.3%	3.5%
Currently Hospitalized	257	250

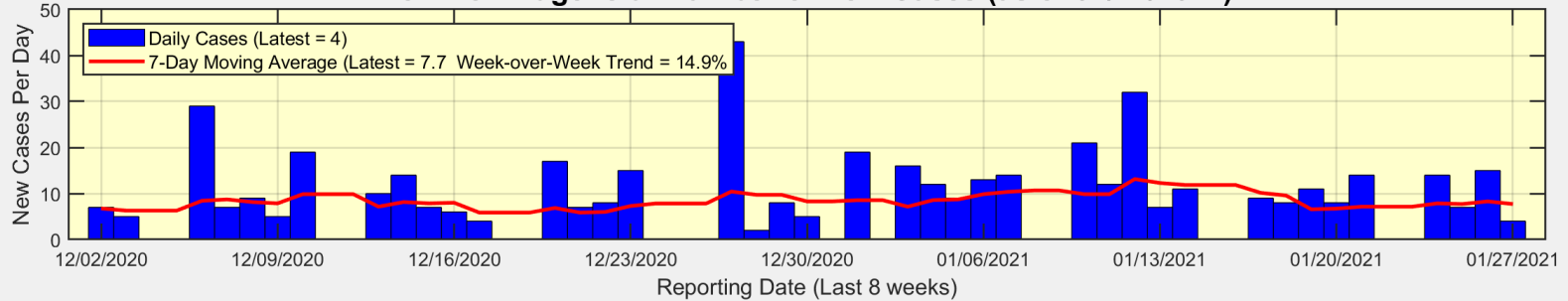
**Data Source:** <https://data.ct.gov>. This report reflects data reported to the State through Wednesday 01/27/2021. The New Case Rate, New Test Rate, and Test Positivity are computed using 7-day moving averages.

Our data science confirms CDC and other studies:  
***Wearing a Mask Reduces COVID Case Rates***

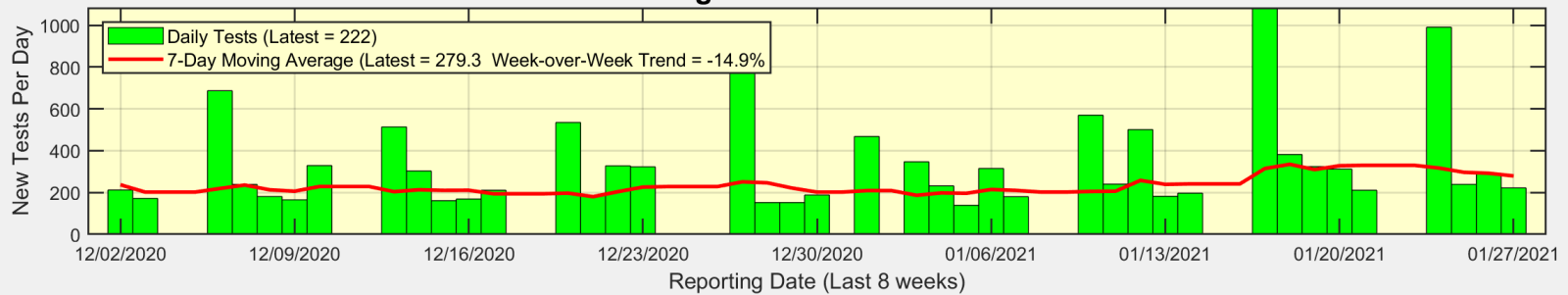


# There were 4 new cases reported for Ridgefield on Wednesday

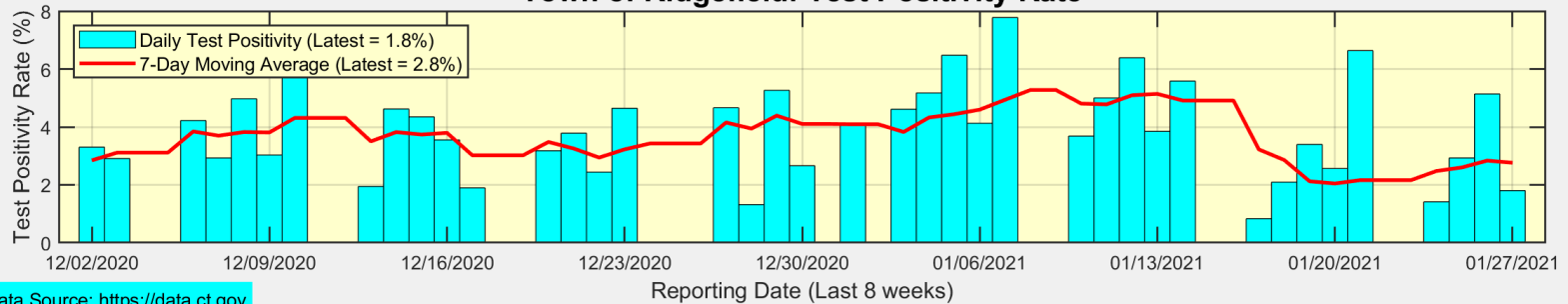
**Town of Ridgefield: Number of New Cases (as of 01/27/2021)**



**Town of Ridgefield: Number of New Tests**



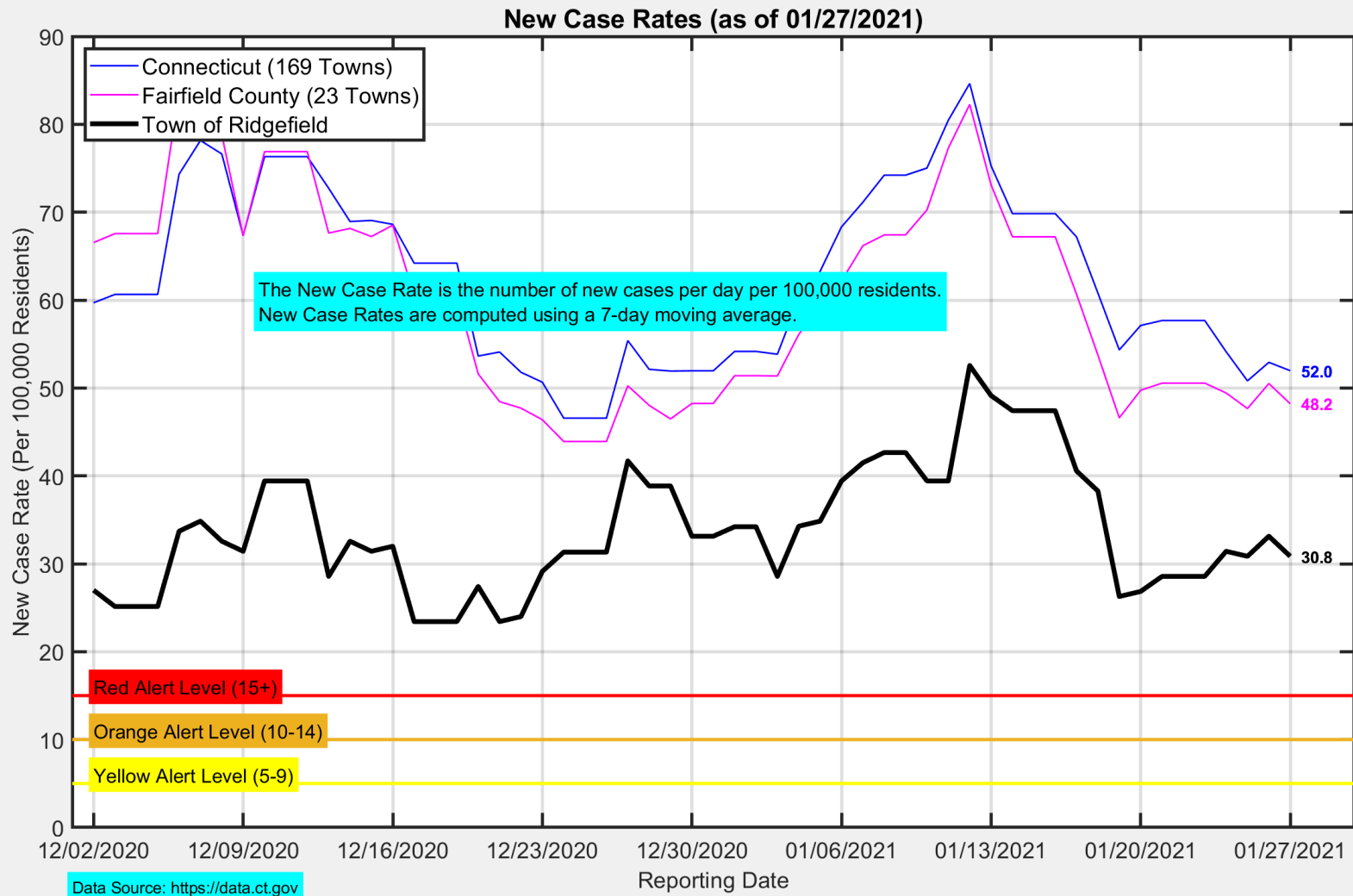
**Town of Ridgefield: Test Positivity Rate**



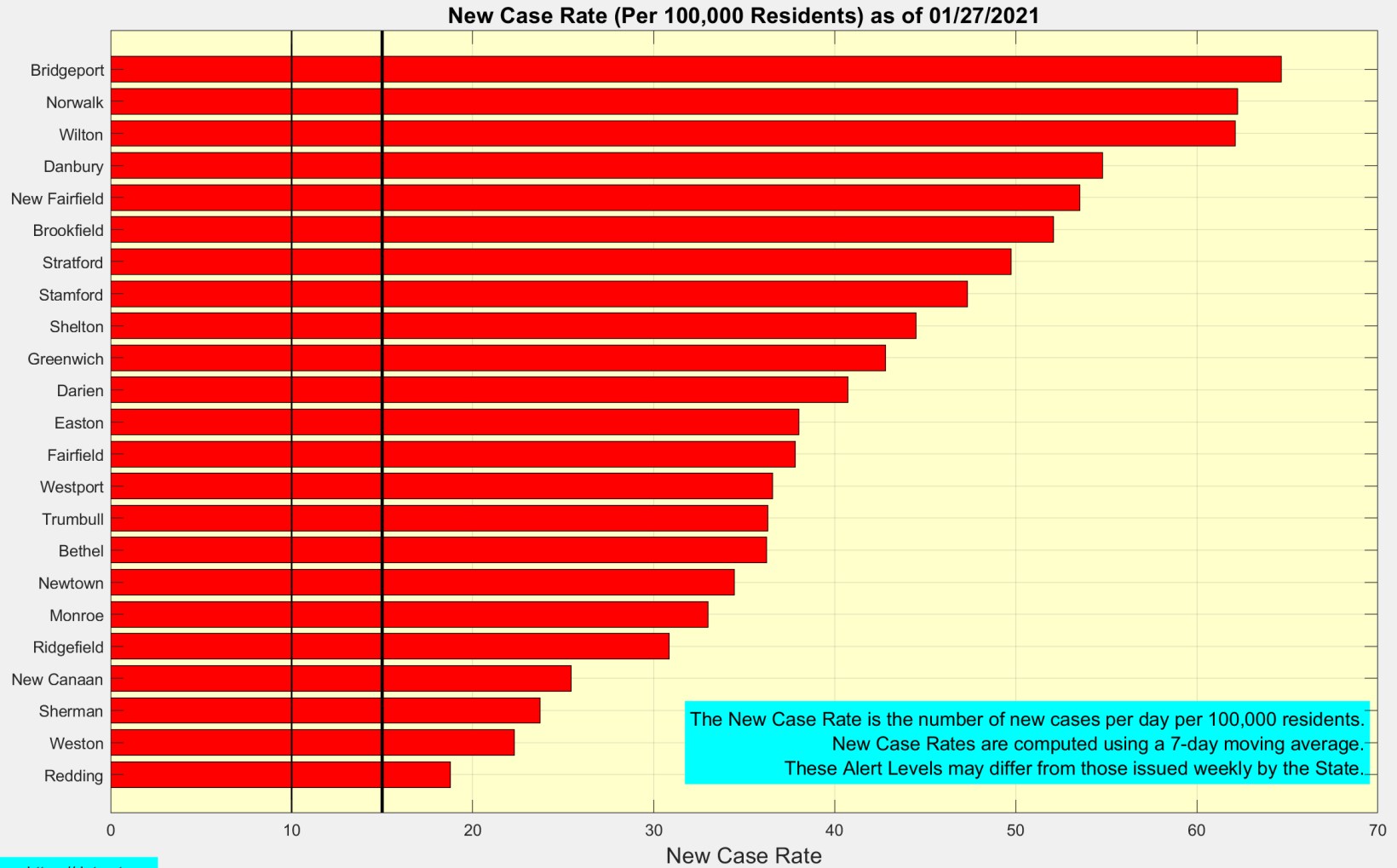
Data Source: <https://data.ct.gov>



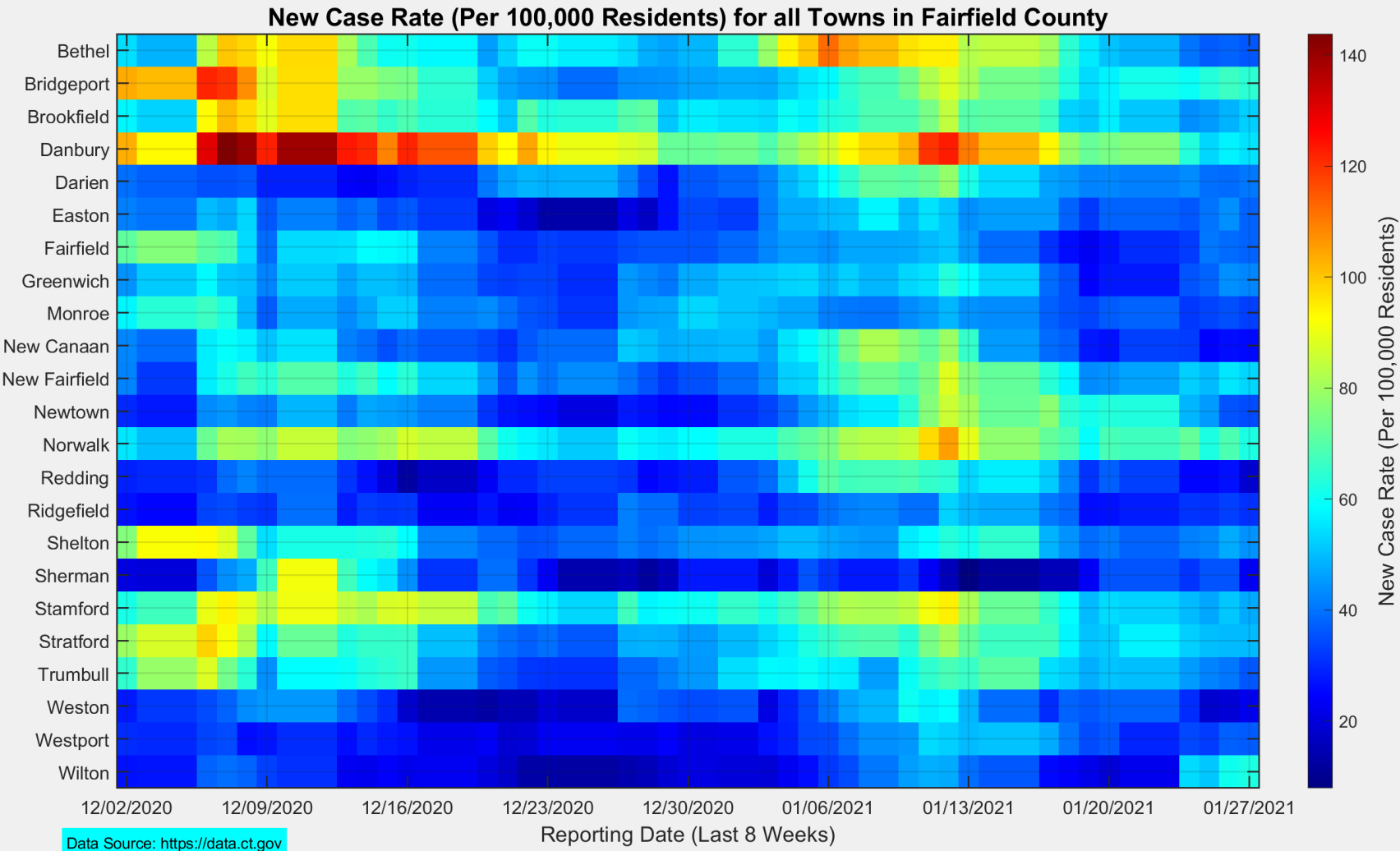
## The New Case Rate in Ridgefield remained stable at 30.8



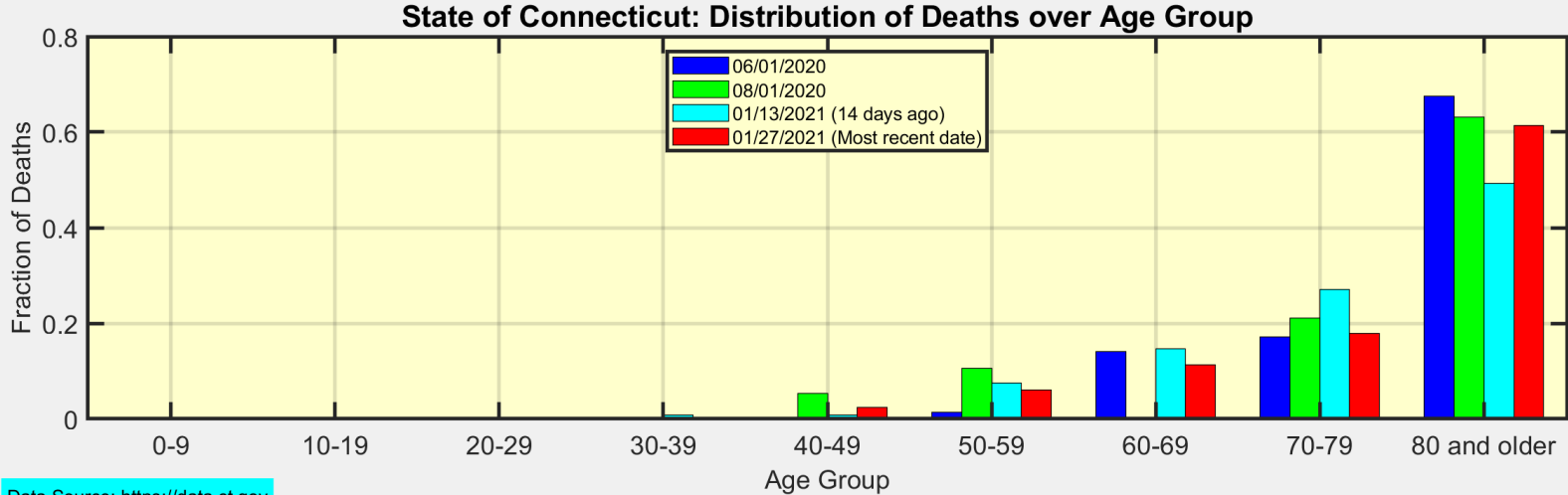
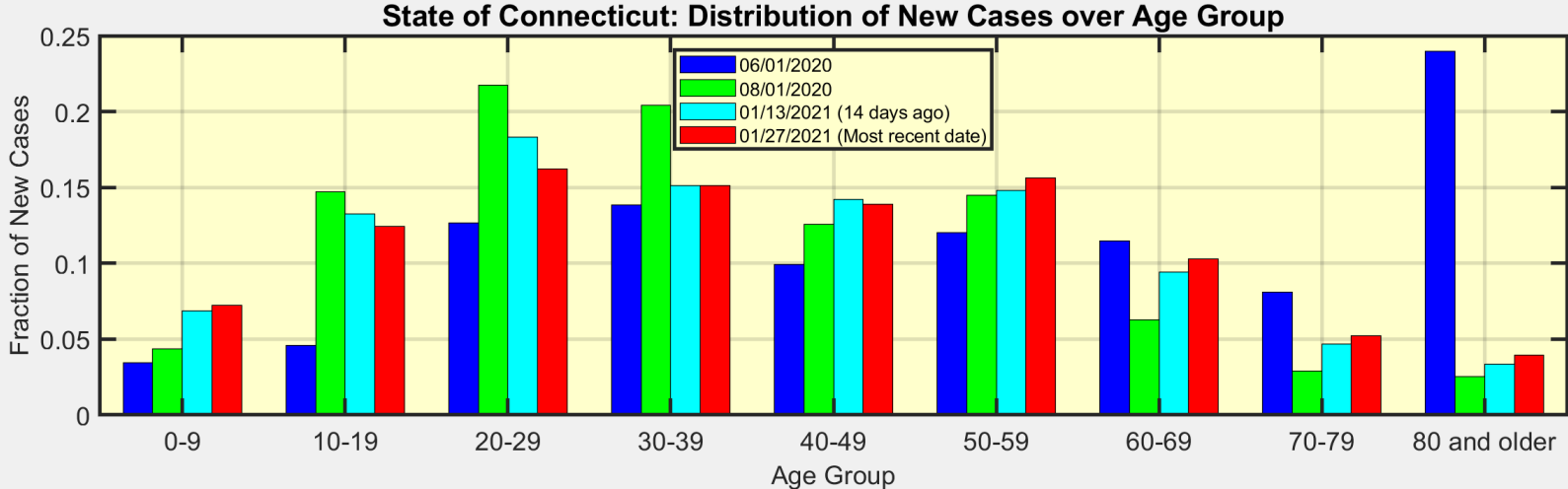
# Here are the latest New Case Rates for all towns in Fairfield County



This heat map shows the progression of New Case Rates for all towns in Fairfield County



# These are the distributions of New Cases and Deaths over age group for the State of Connecticut



Data Source: <https://data.ct.gov>



## Introduction to Scatter Plots of New Case Rates vs New Test Rates

**y-axis**

**x-axis**

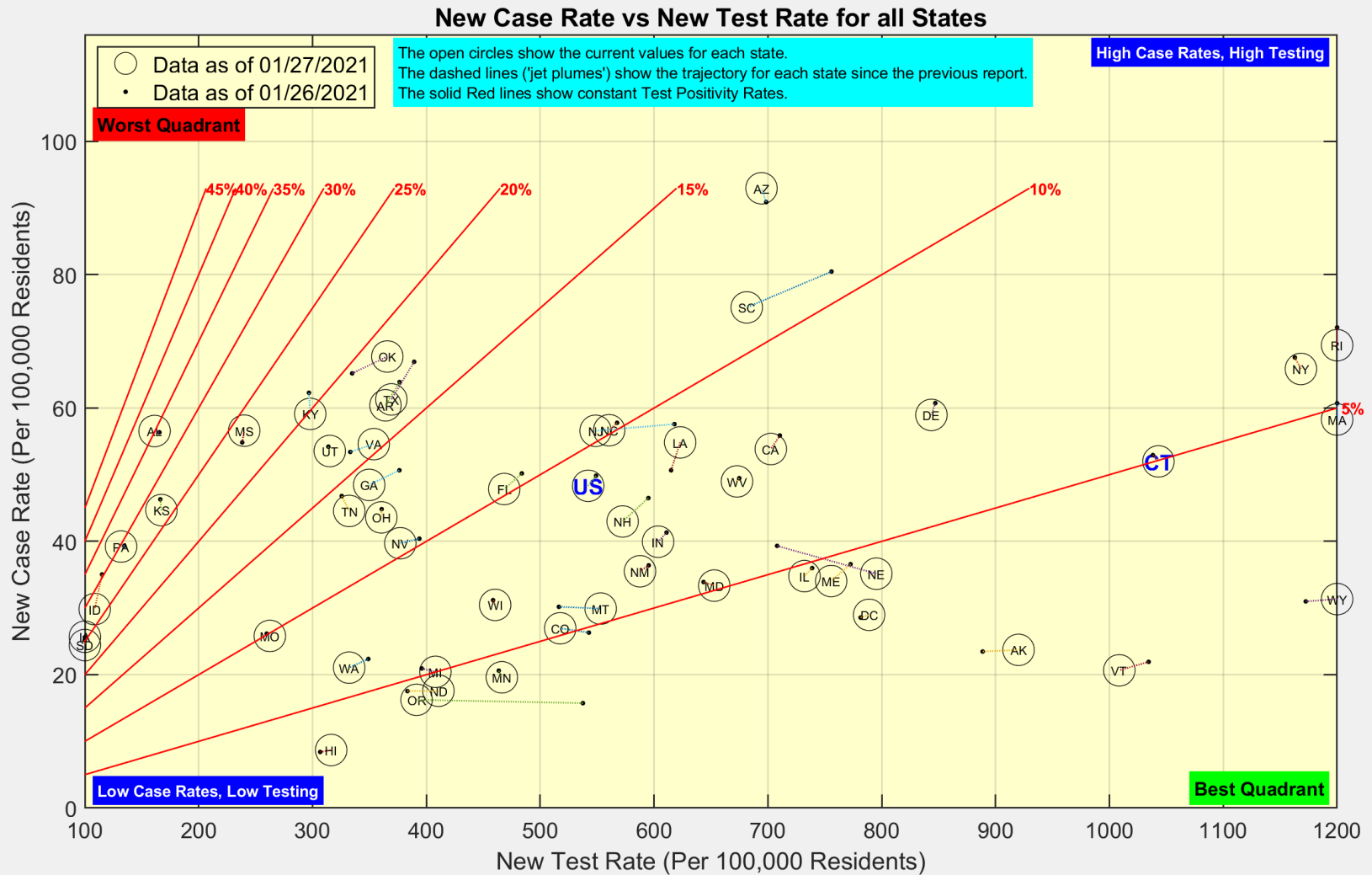
**Red Diagonal Lines**

$$\begin{array}{l} \text{New Case Rate} \\ \left[ \frac{\text{New Cases}}{100,000 \text{ Residents}} \right] \end{array} = \begin{array}{l} \text{New Test Rate} \\ \left[ \frac{\text{New Tests}}{100,000 \text{ Residents}} \right] \end{array} \times \begin{array}{l} \text{Test Positivity} \\ \left[ \frac{\text{New Cases}}{\text{New Tests}} \right] \end{array}$$

1. The dashed lines can be thought of as 'jet plumes' showing the trajectory of each state (or town) since the previous report.
2. The New Case Rate and the New Test Rate are computed as 7-day moving averages.



# Here is the latest view of New Cases and New Tests for all states

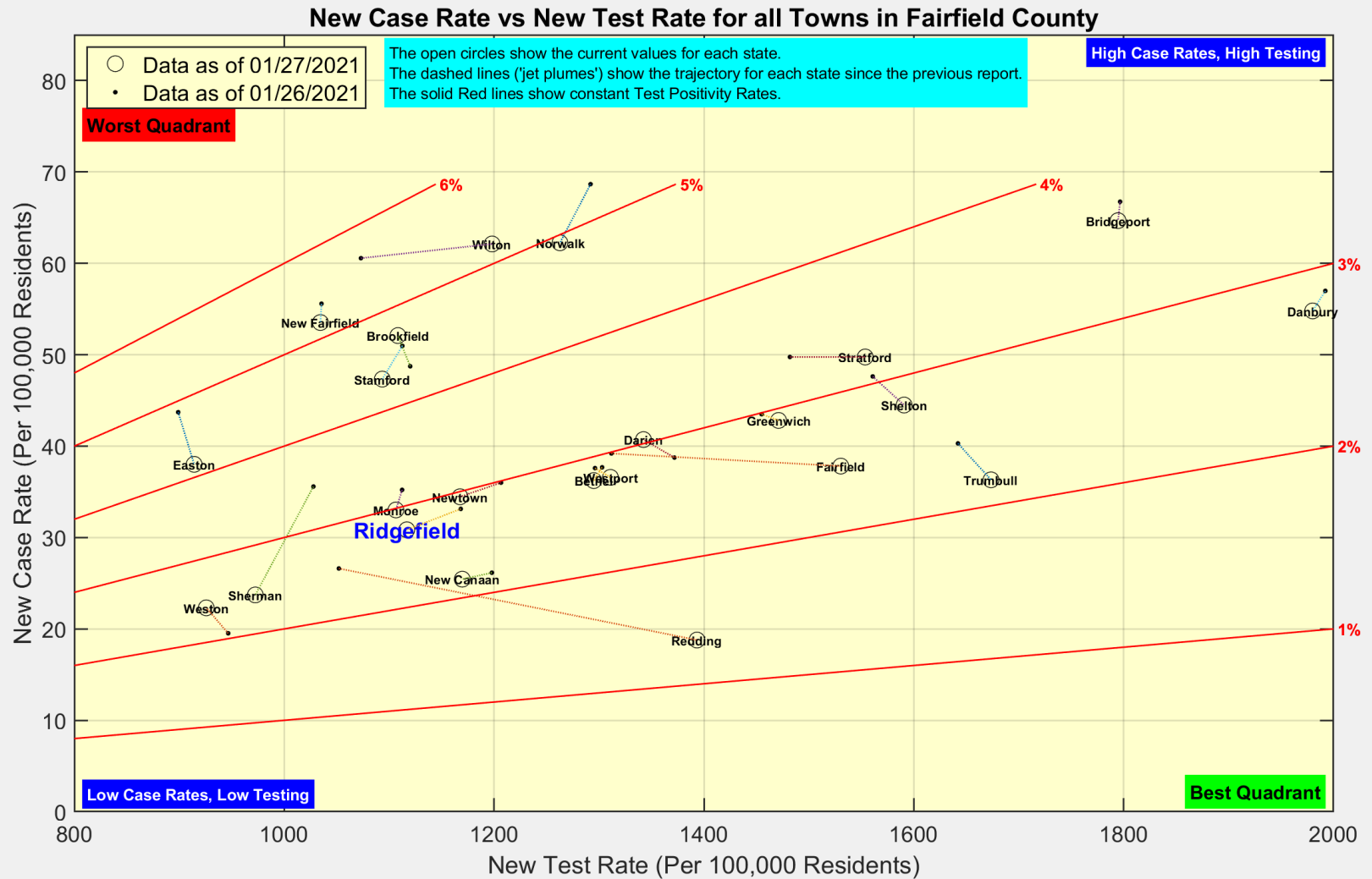


Data Source: <https://covidtracking.com/data/api>



**Ridgefield COVID-19 Task Force**

# Here is the latest view of New Cases and New Tests for all towns in Fairfield County



Data Source: <https://data.ct.gov>



Ridgefield COVID-19 Task Force