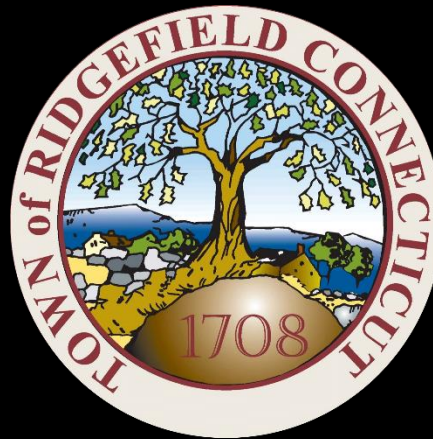


# Ridgefield COVID Report

## Ridgefield COVID-19 Task Force



Data downloaded from  
<https://data.ct.gov/browse?category=Health+and+Human+Services>

Data downloaded as of Friday, December 4, 2020 at 4PM  
This reflects data through Thursday, December 3, 2020

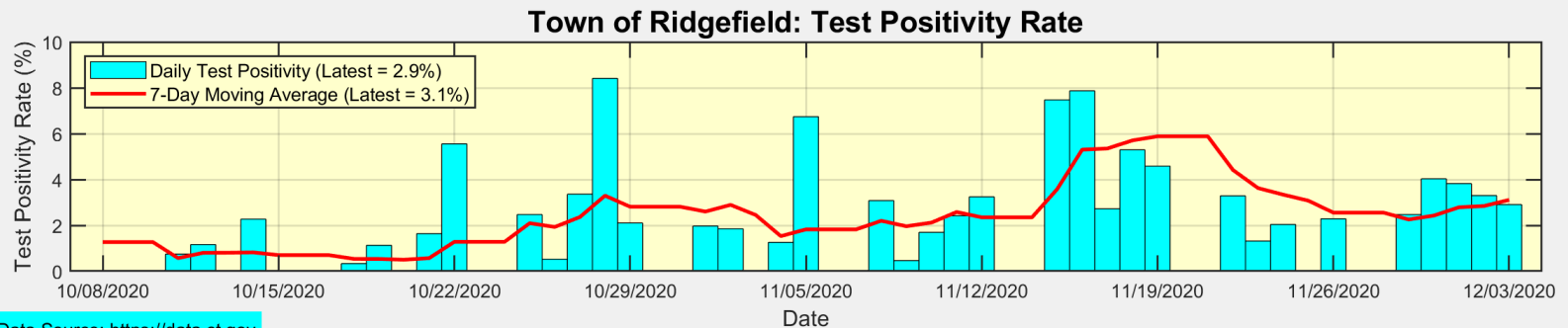
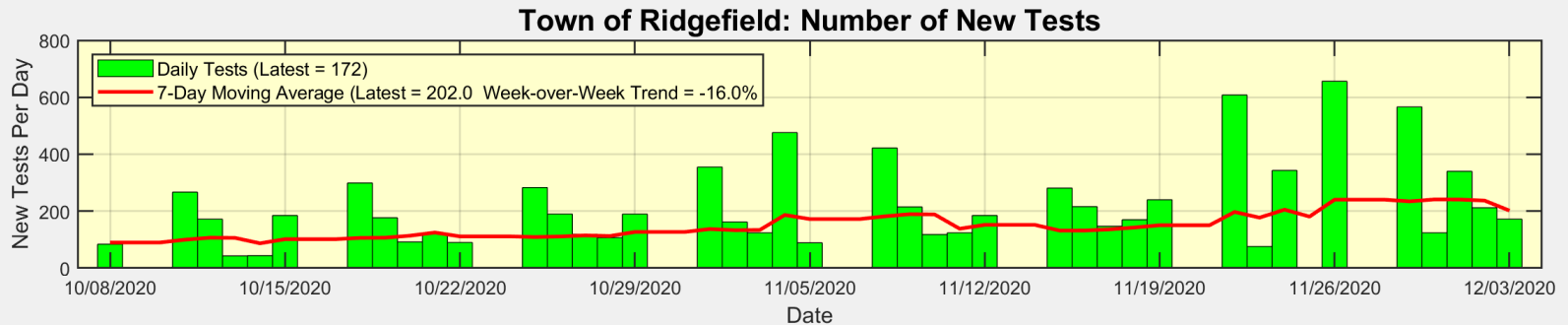
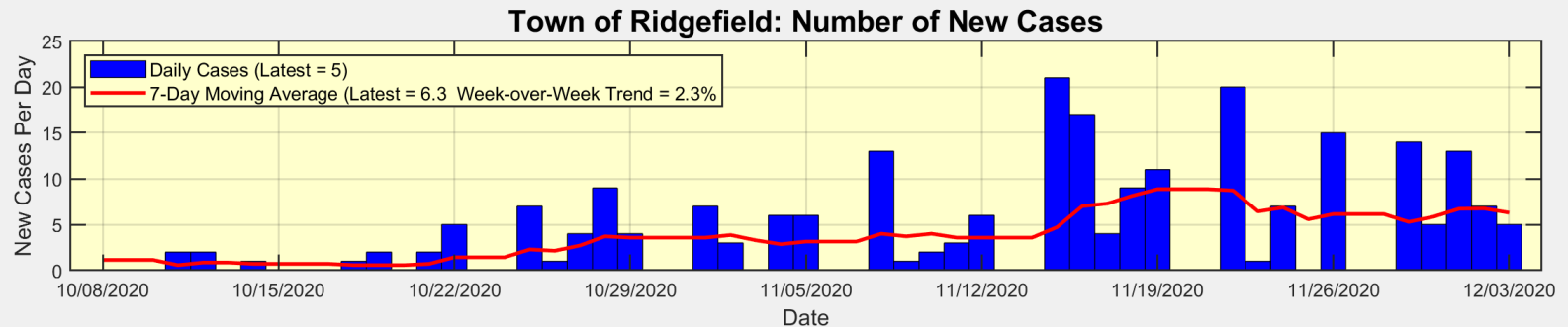
## Ridgefield Summary

Friday, December 4, 2020

- There were 5 new cases in Ridgefield on Thursday
  - The 7-day moving average of daily new cases is 6.3
- This translates to a New Case Rate of 25.1 new cases per 100,000 residents
  - The Fairfield County New Case Rate is 67.6 new cases per 100,000 residents
  - Ridgefield remains at the State Red Alert Level (because this rate is over 15)
- Ridgefield testing decreased by 16% week over week
  - Testing across Fairfield County increased 25% week over week
- The Test Positivity Rate for Ridgefield (averaged over 7 days) is 3.1%
  - The Test Positivity Rate for Fairfield County is 6.5%
- Our data science confirms CDC and other studies
  - ***Wearing a Mask Reduces COVID Case Rates***



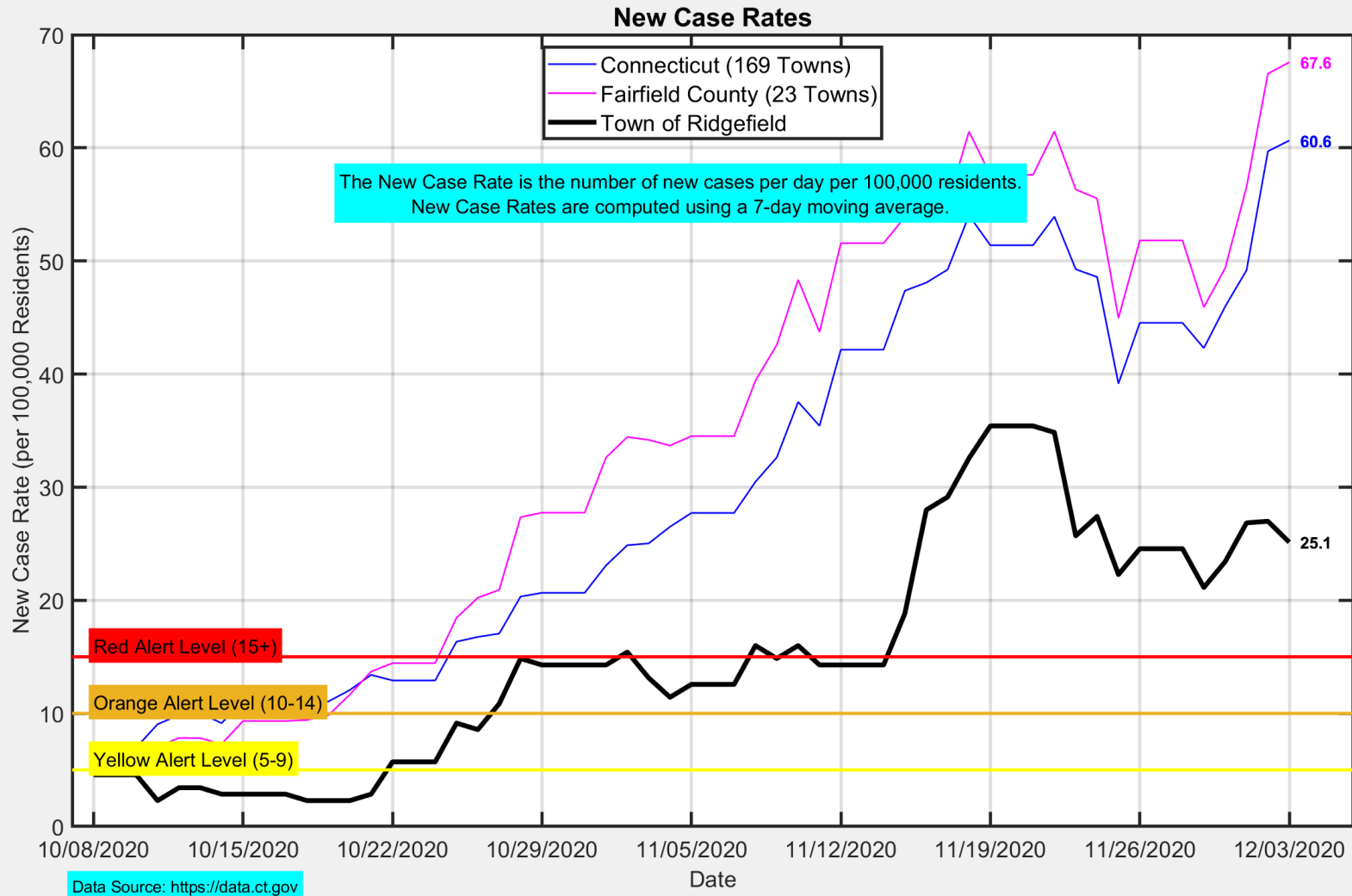
# There were 5 new cases reported in Ridgefield on Thursday



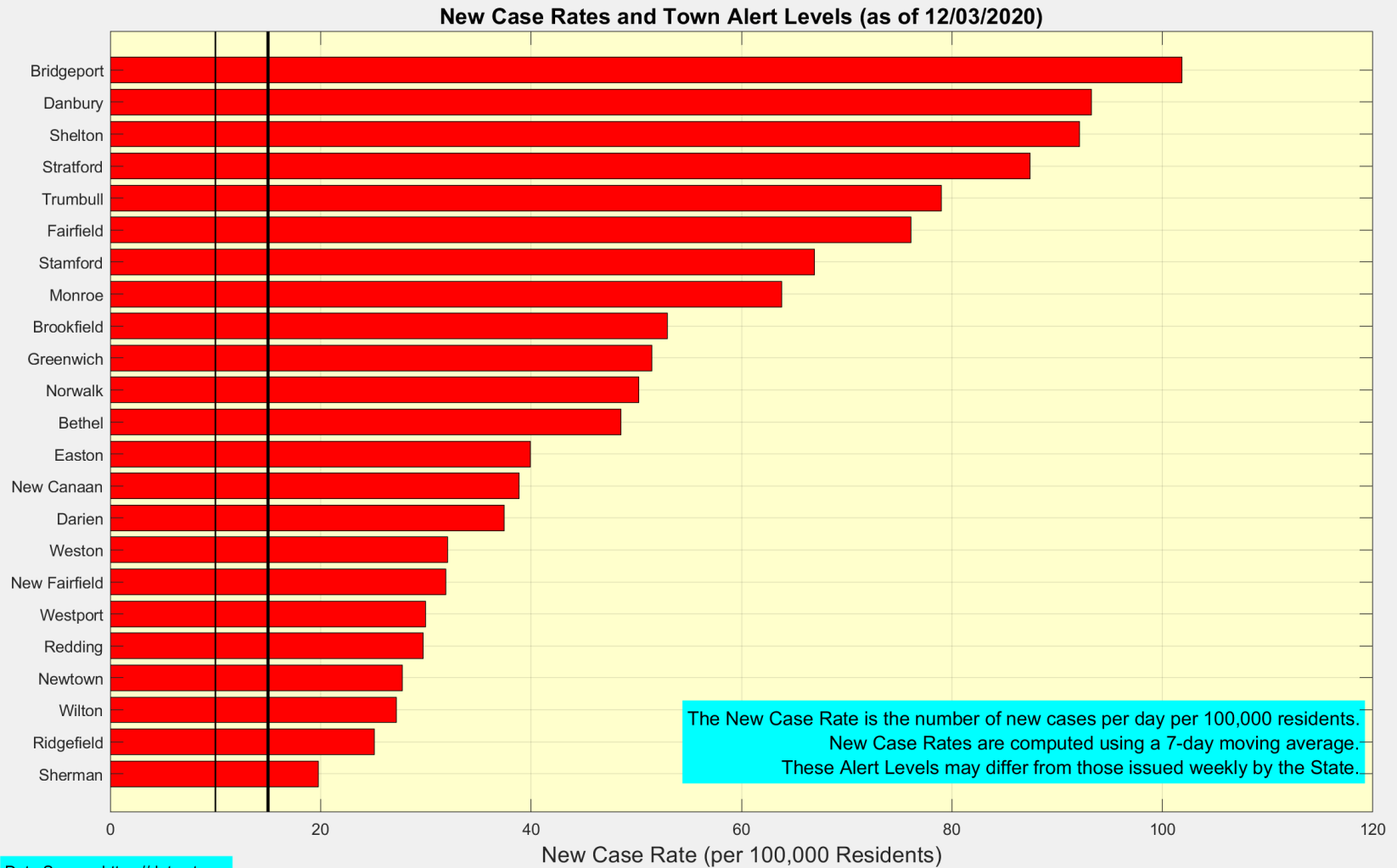
Data Source: <https://data.ct.gov>



# The Ridgefield New Case Rate remains stable at 25.1 per 100,000 residents



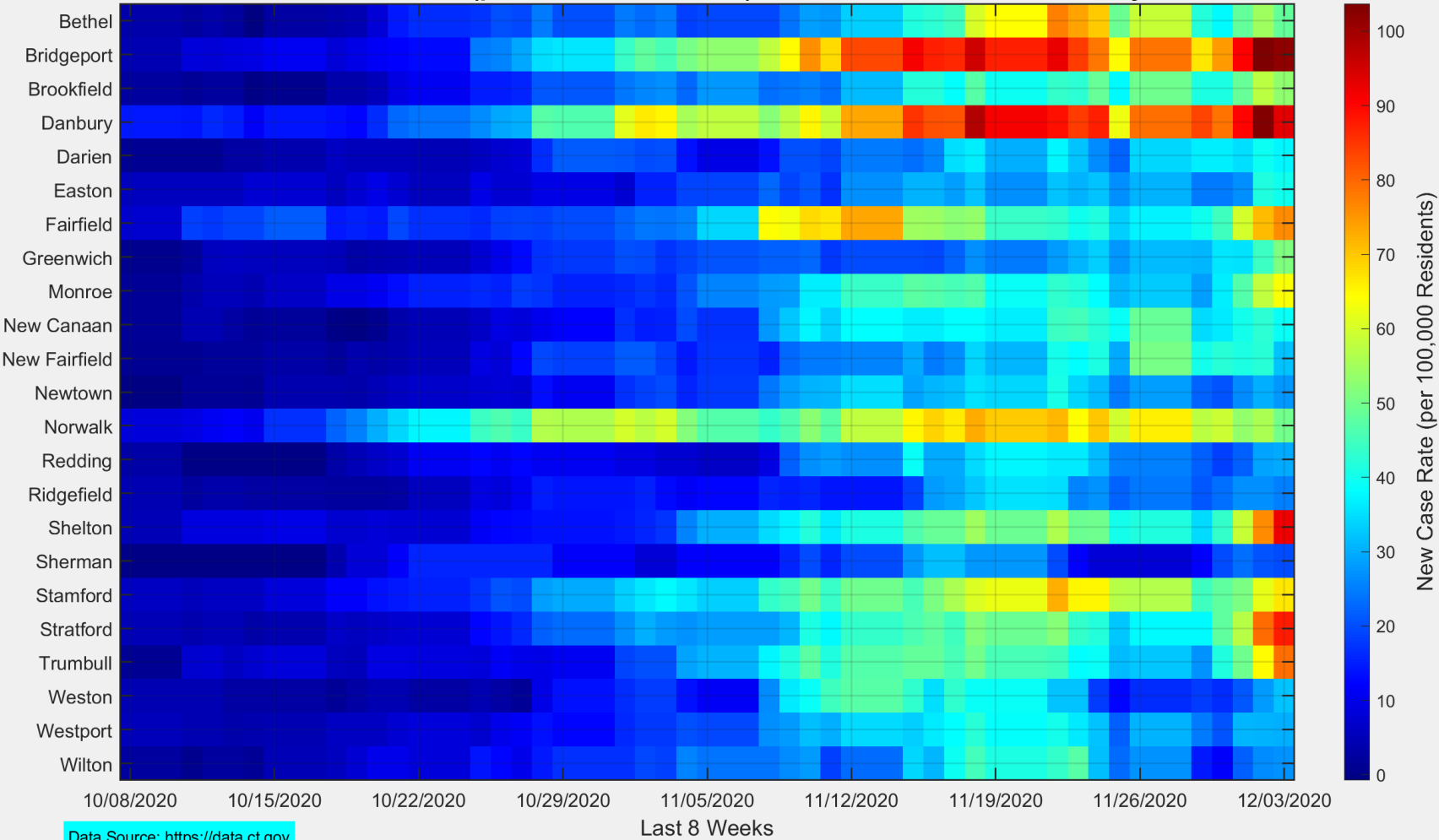
# Ridgefield continues to have one of the lower New Case Rates in Fairfield County



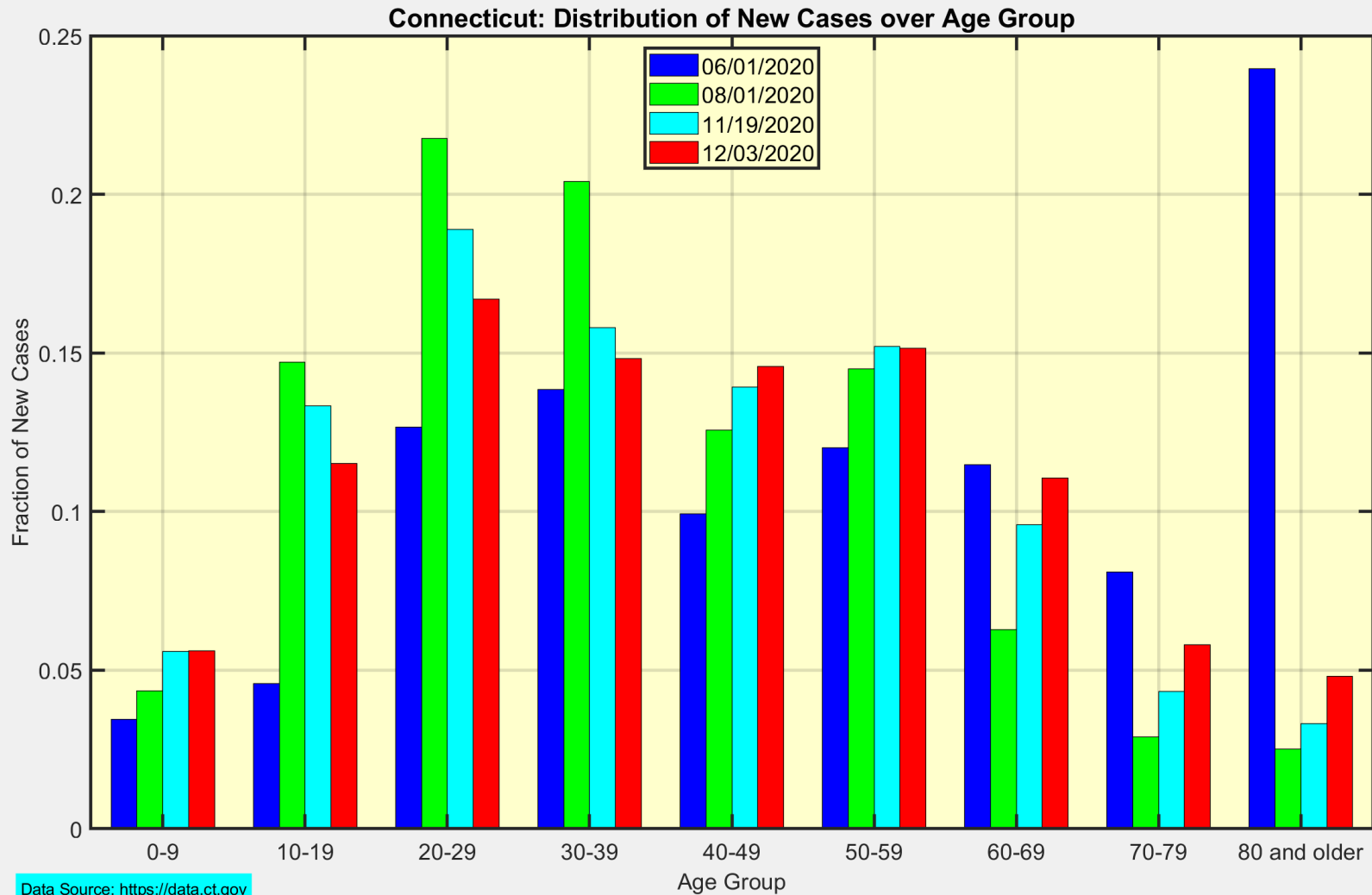
# This heat map shows the progression of New Case Rates for all towns in Fairfield County

The magnitude of the New Case Rate is indicated by the color bar at the right. Red indicates the highest Case Rates.

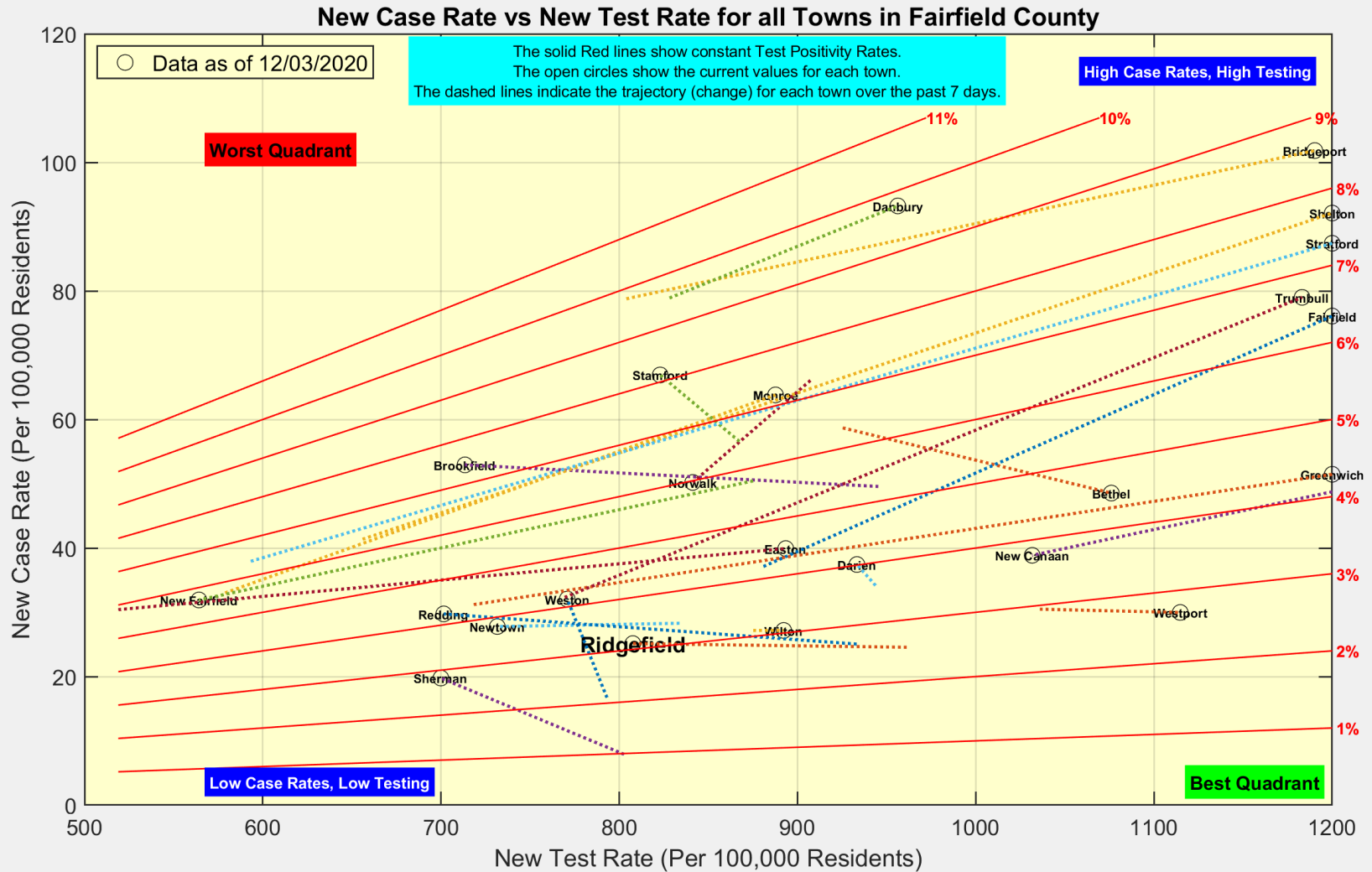
New Case Rates (per 100,000 Residents) for all Towns in Fairfield County



# This is the distribution of New Cases over age group for the entire State of Connecticut



# Many towns significantly ramped up testing during the Thanksgiving period



Data Source: <https://data.ct.gov>



**Ridgefield COVID-19 Task Force**