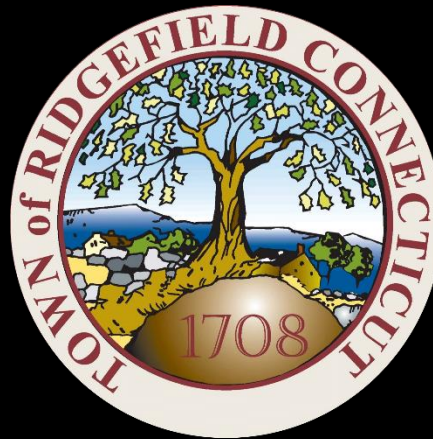


Ridgefield COVID Report

Ridgefield COVID-19 Task Force



Data downloaded from
<https://data.ct.gov/browse?category=Health+and+Human+Services>

Data downloaded on Thursday, December 31, 2020 at 4:00 PM
This reflects data through Wednesday, December 30, 2020

Ridgefield Summary

Data downloaded on Thursday, 12/31/2020 at 4:00 PM

Ridgefield	Wednesday 12/30/2020	Tuesday 12/29/2020
Number of New Cases Reported	5	8
New Case Rate (per 100,000 Residents)	33.1	38.8
New Test Rate (per 100,000 Residents)	807.7	884.8
Test Positivity	4.1%	4.4%
Fairfield County	Wednesday 12/30/2020	Tuesday 12/29/2020
Number of New Cases Reported	643	392
New Case Rate (per 100,000 Residents)	48.2	46.5
New Test Rate (per 100,000 Residents)	757.4	820.0
Test Positivity	6.4%	5.7%
Currently Hospitalized	295	291

Data Source: <https://data.ct.gov>. This report reflects data reported to the State through Wednesday 12/30/2020. The New Case Rate, New Test Rate, and Test Positivity are computed using 7-day moving averages.

Our data science confirms CDC and other studies:

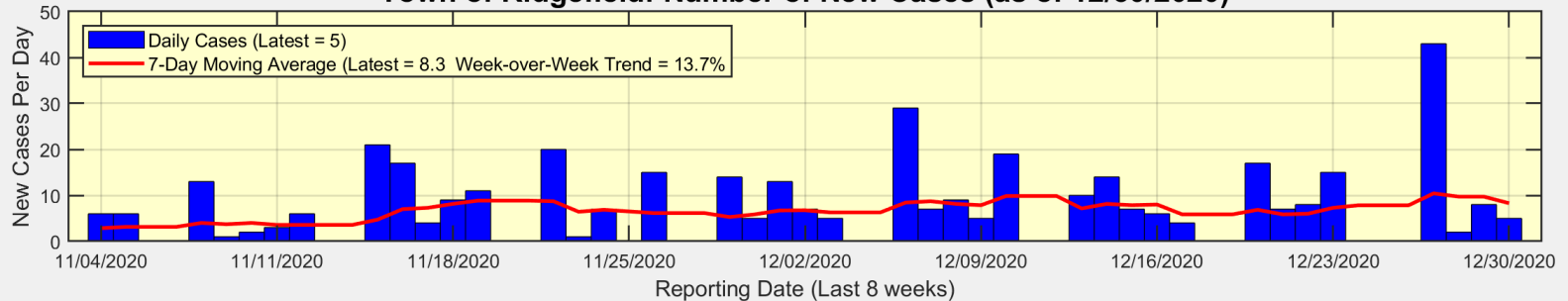
Wearing a Mask Reduces COVID Case Rates



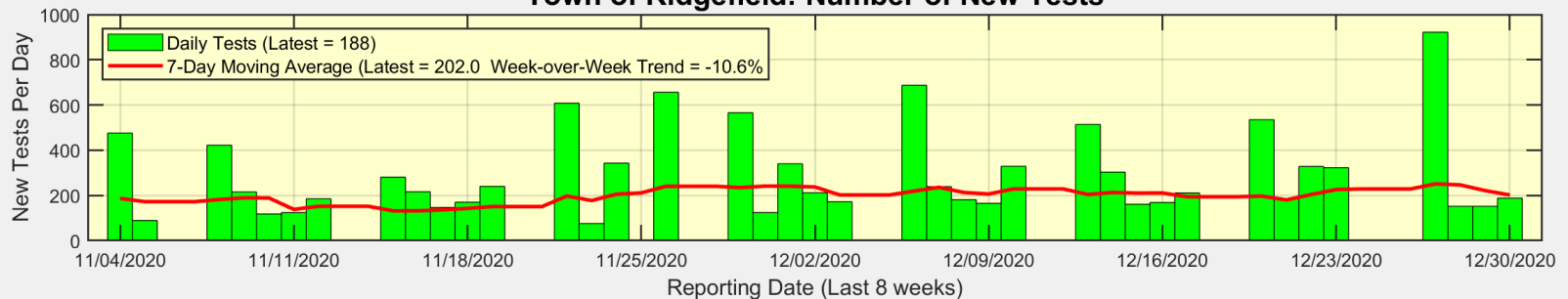
Ridgefield COVID-19 Task Force

There were 5 new cases reported in Ridgefield on Wednesday

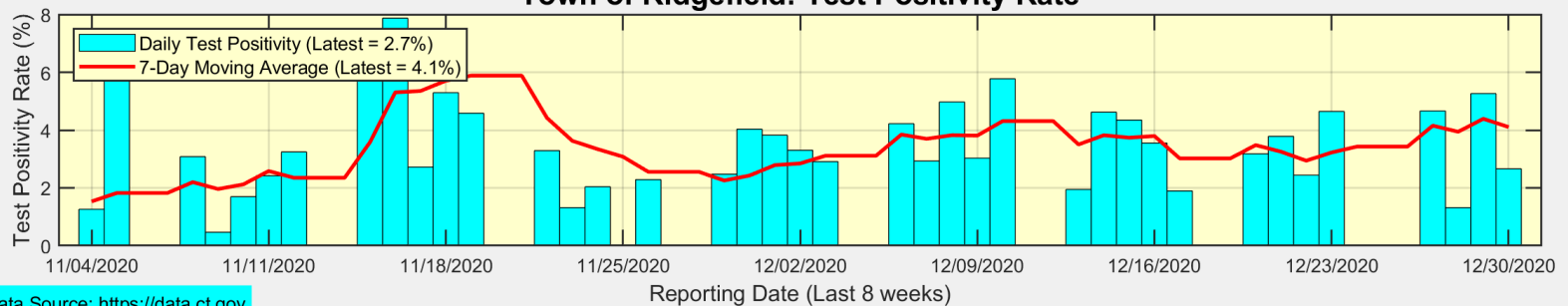
Town of Ridgefield: Number of New Cases (as of 12/30/2020)



Town of Ridgefield: Number of New Tests



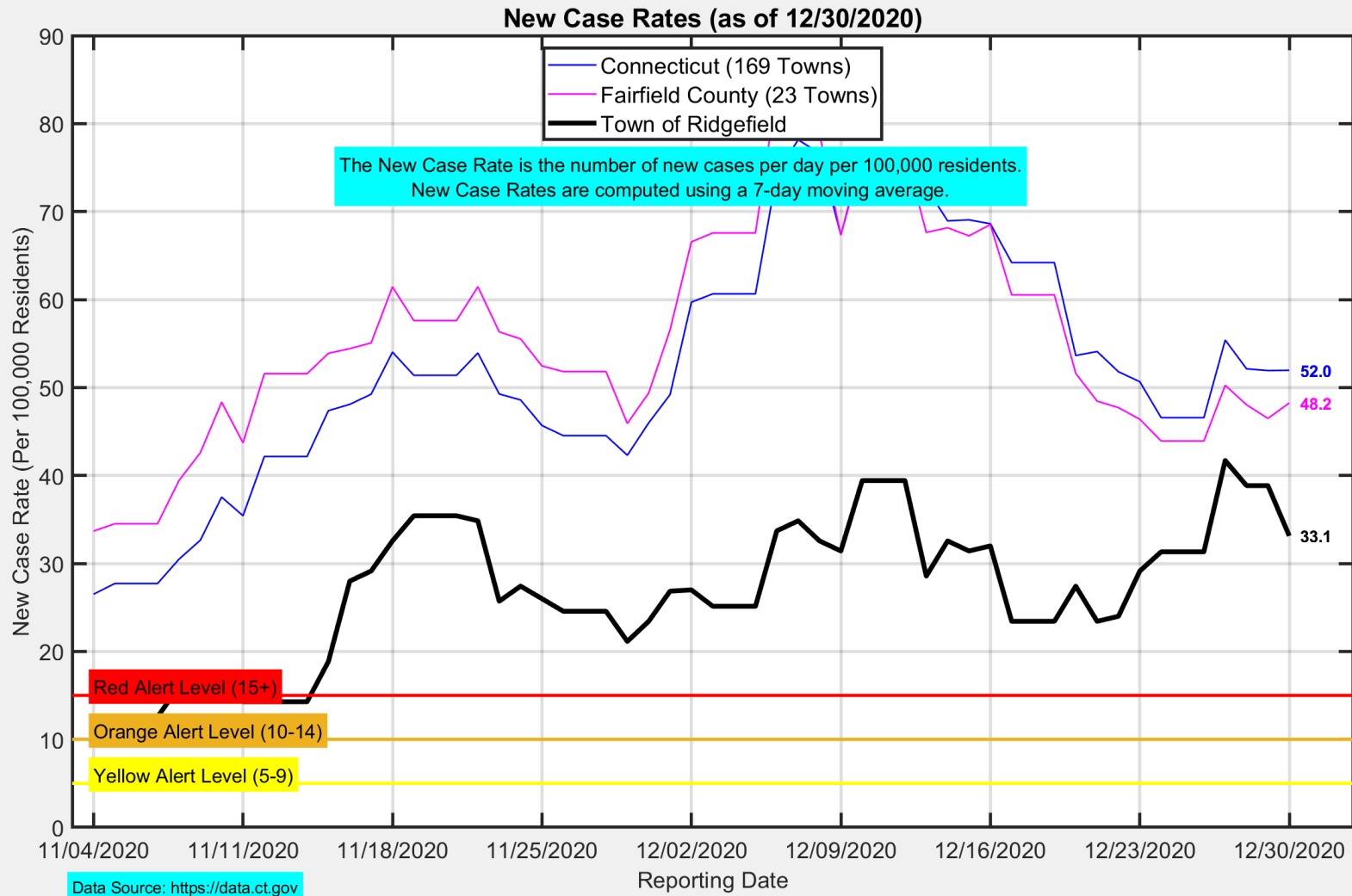
Town of Ridgefield: Test Positivity Rate



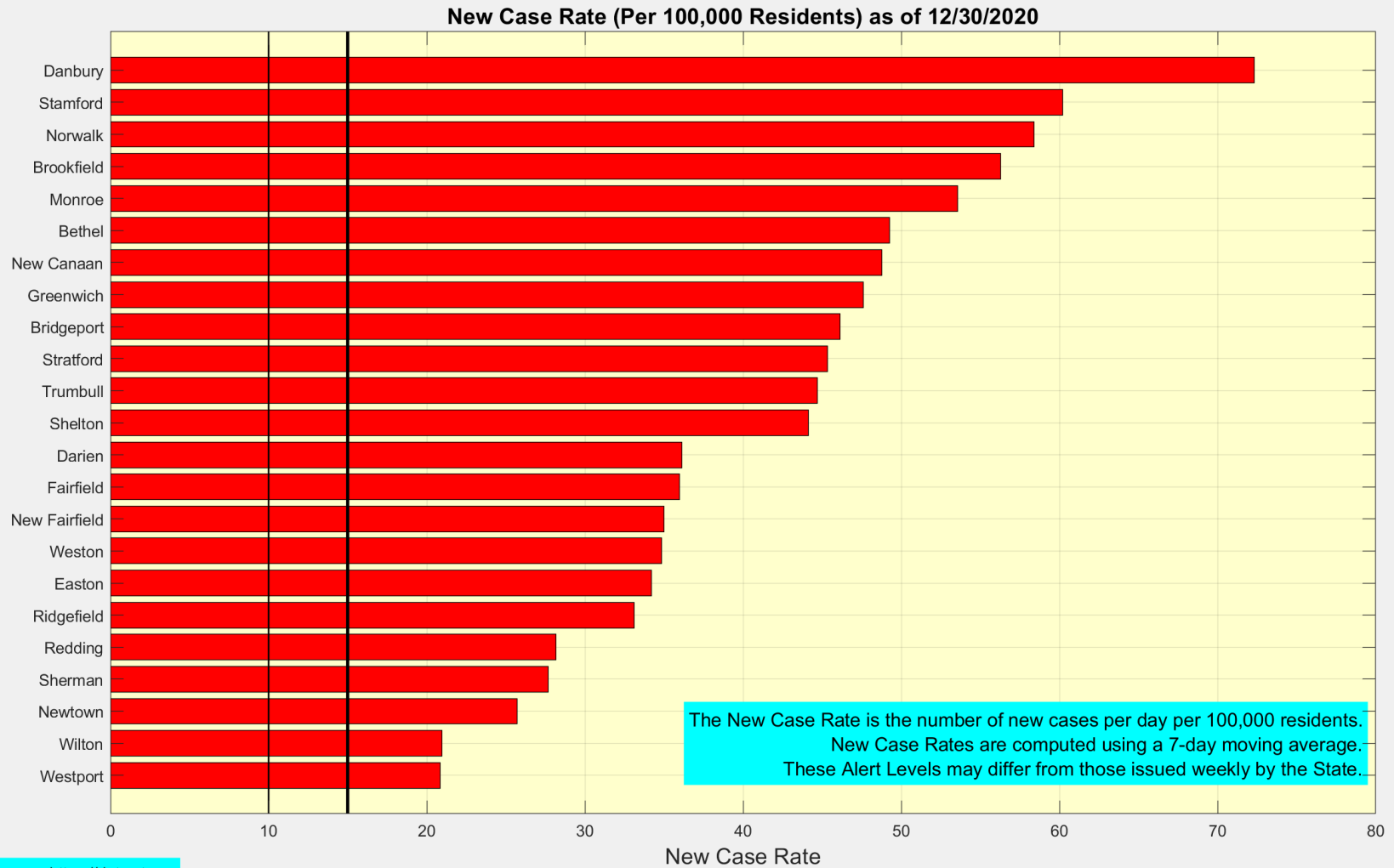
Data Source: <https://data.ct.gov>



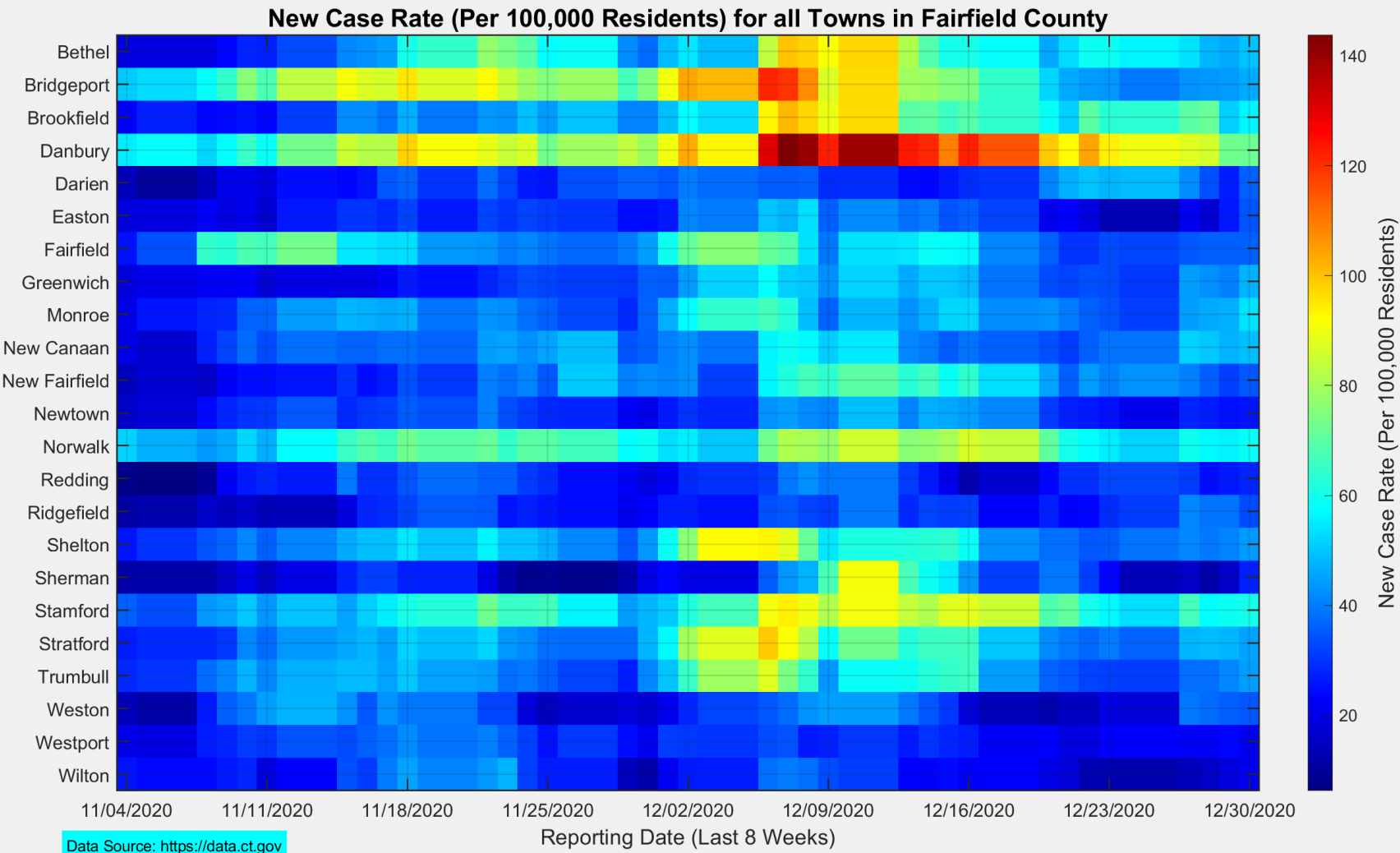
The New Case Rate in Ridgefield is decreased to 33.1



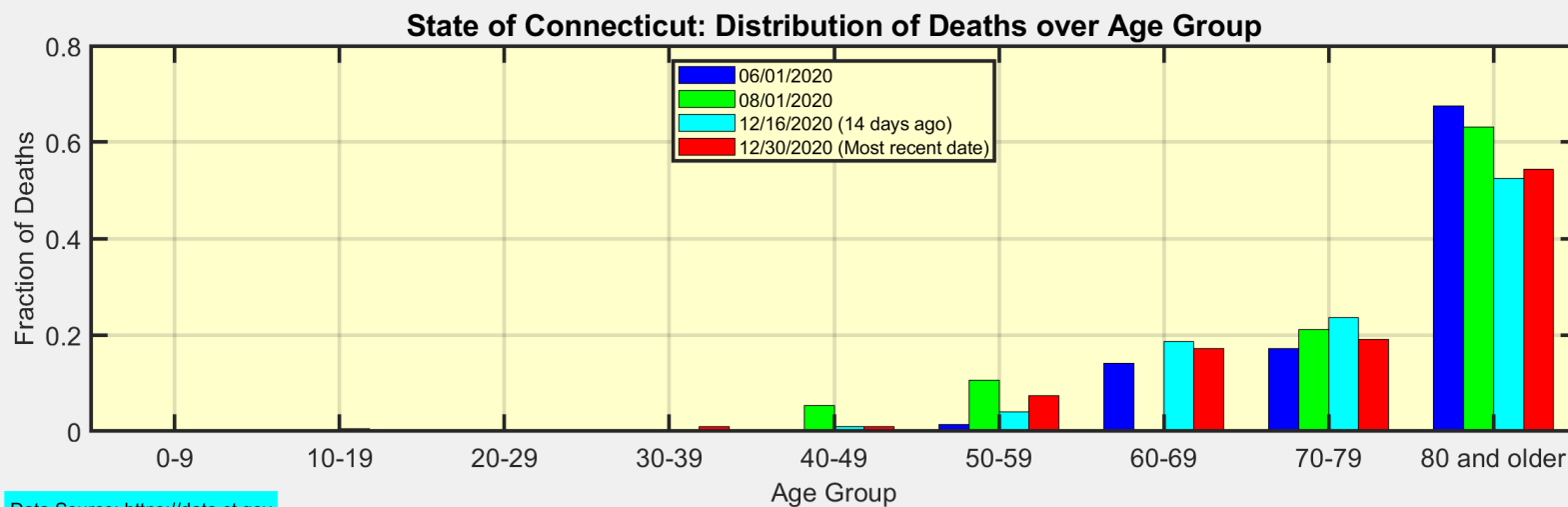
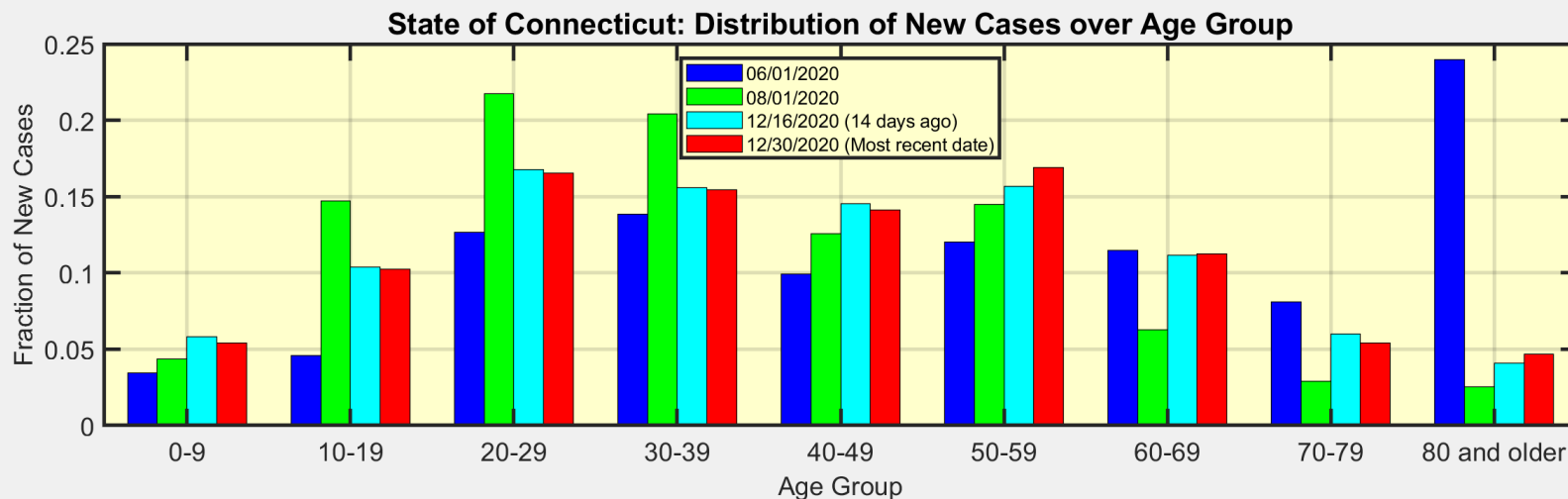
Here are the latest New Case Rates for all towns in Fairfield County



This heat map shows the progression of New Case Rates for all towns in Fairfield County



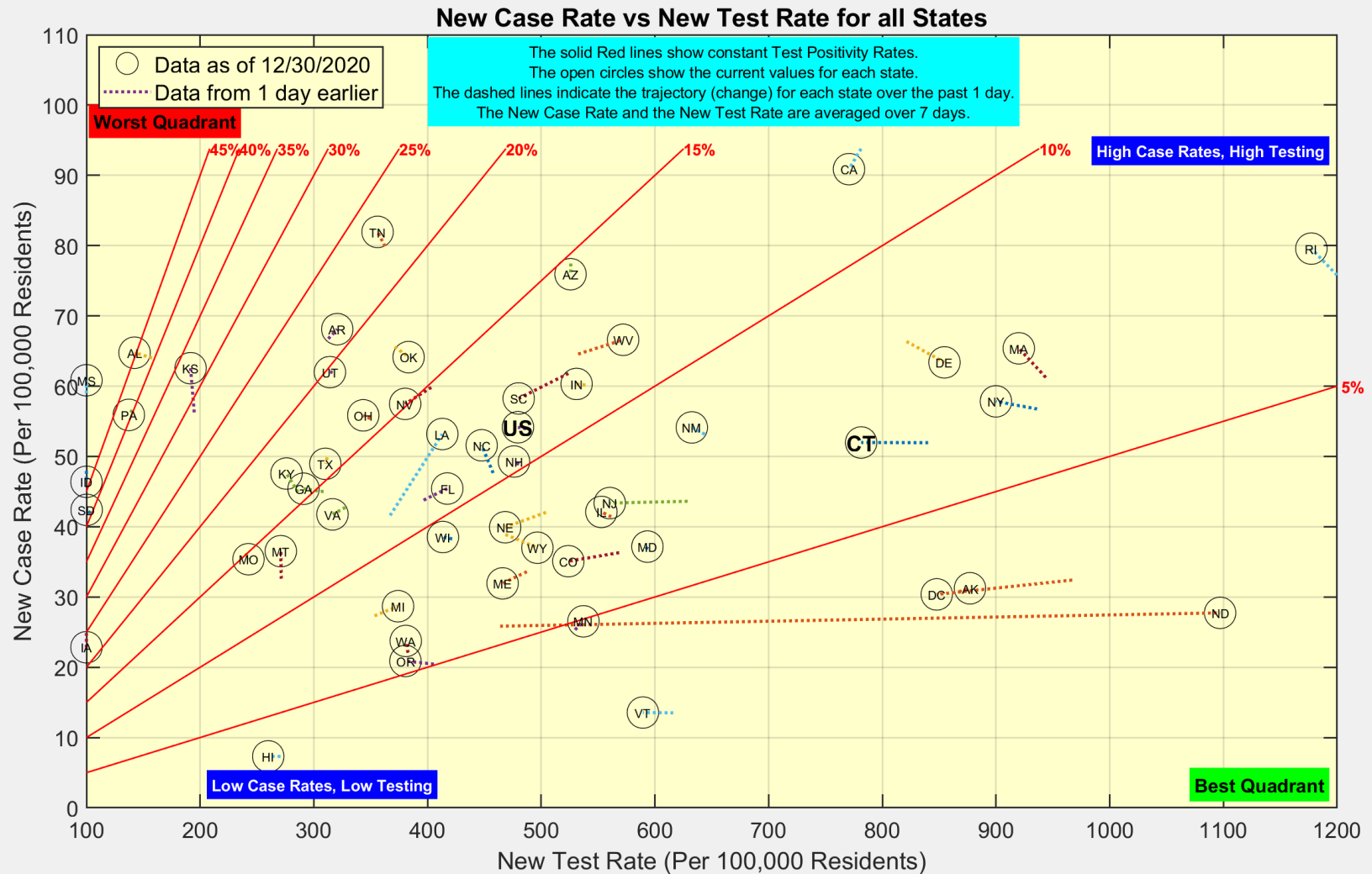
These are the distributions of New Cases and Deaths over age group for the State of Connecticut



Data Source: <https://data.ct.gov>



Here is the latest view of New Cases and New Tests for all states



Data Source: <https://covidtracking.com/data/api>



Ridgefield COVID-19 Task Force

Here is the latest view of New Cases and New Tests for all towns in Fairfield County

