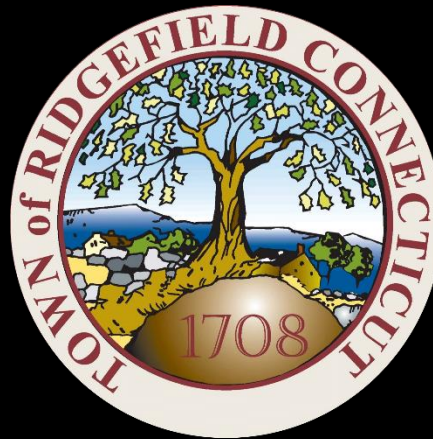


Ridgefield COVID Report

Ridgefield COVID-19 Task Force



Data downloaded from
<https://data.ct.gov/browse?category=Health+and+Human+Services>

Data downloaded on Wednesday, December 30, 2020 at 4:00 PM
This reflects data through Tuesday, December 29, 2020

Ridgefield Summary

Data downloaded on Wednesday, 12/30/2020 at 4:00 PM

Ridgefield	Tuesday 12/29/2020	Monday 12/28/2020
Number of New Cases Reported	8	2
New Case Rate (per 100,000 Residents)	38.8	38.8
New Test Rate (per 100,000 Residents)	884.8	985.4
Test Positivity	4.4%	3.9%
Fairfield County	Tuesday 12/29/2020	Monday 12/28/2020
Number of New Cases Reported	392	216
New Case Rate (per 100,000 Residents)	46.5	48.0
New Test Rate (per 100,000 Residents)	820.0	895.0
Test Positivity	5.7%	5.4%
Currently Hospitalized	291	290
Data Source: https://data.ct.gov. This report reflects data reported to the State through Tuesday 12/29/2020. The New Case Rate, New Test Rate, and Test Positivity are computed using 7-day moving averages.		

Our data science confirms CDC and other studies:

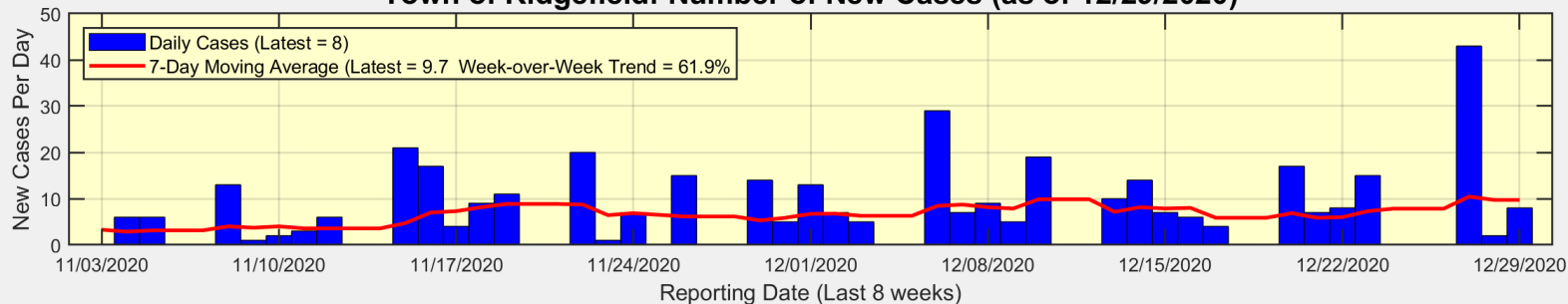
Wearing a Mask Reduces COVID Case Rates



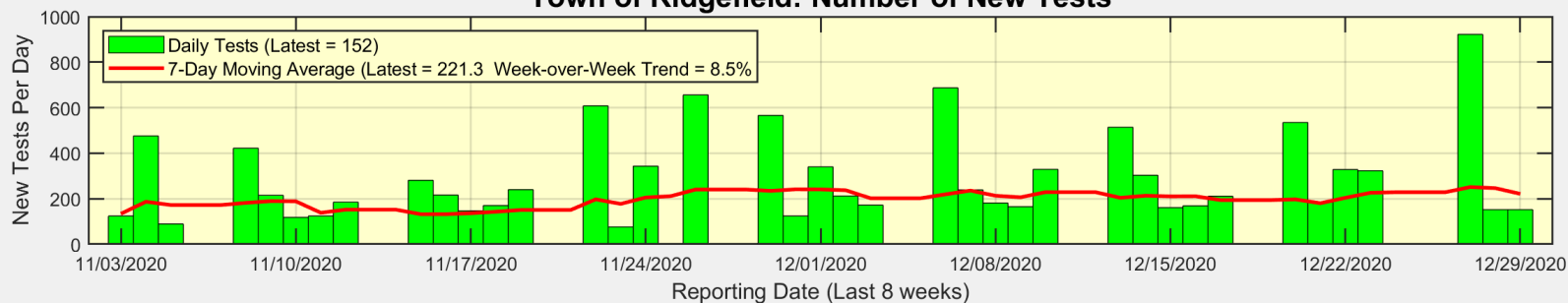
Ridgefield COVID-19 Task Force

There were 8 new cases reported in Ridgefield on Tuesday

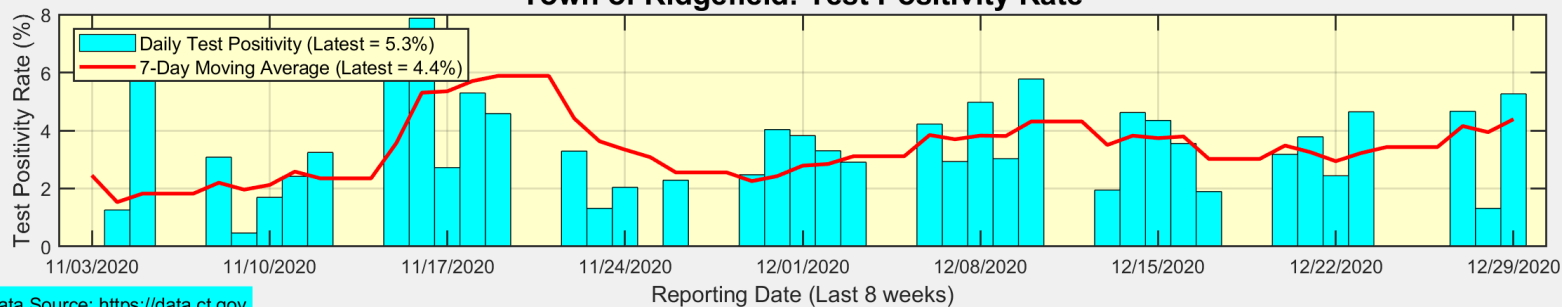
Town of Ridgefield: Number of New Cases (as of 12/29/2020)



Town of Ridgefield: Number of New Tests



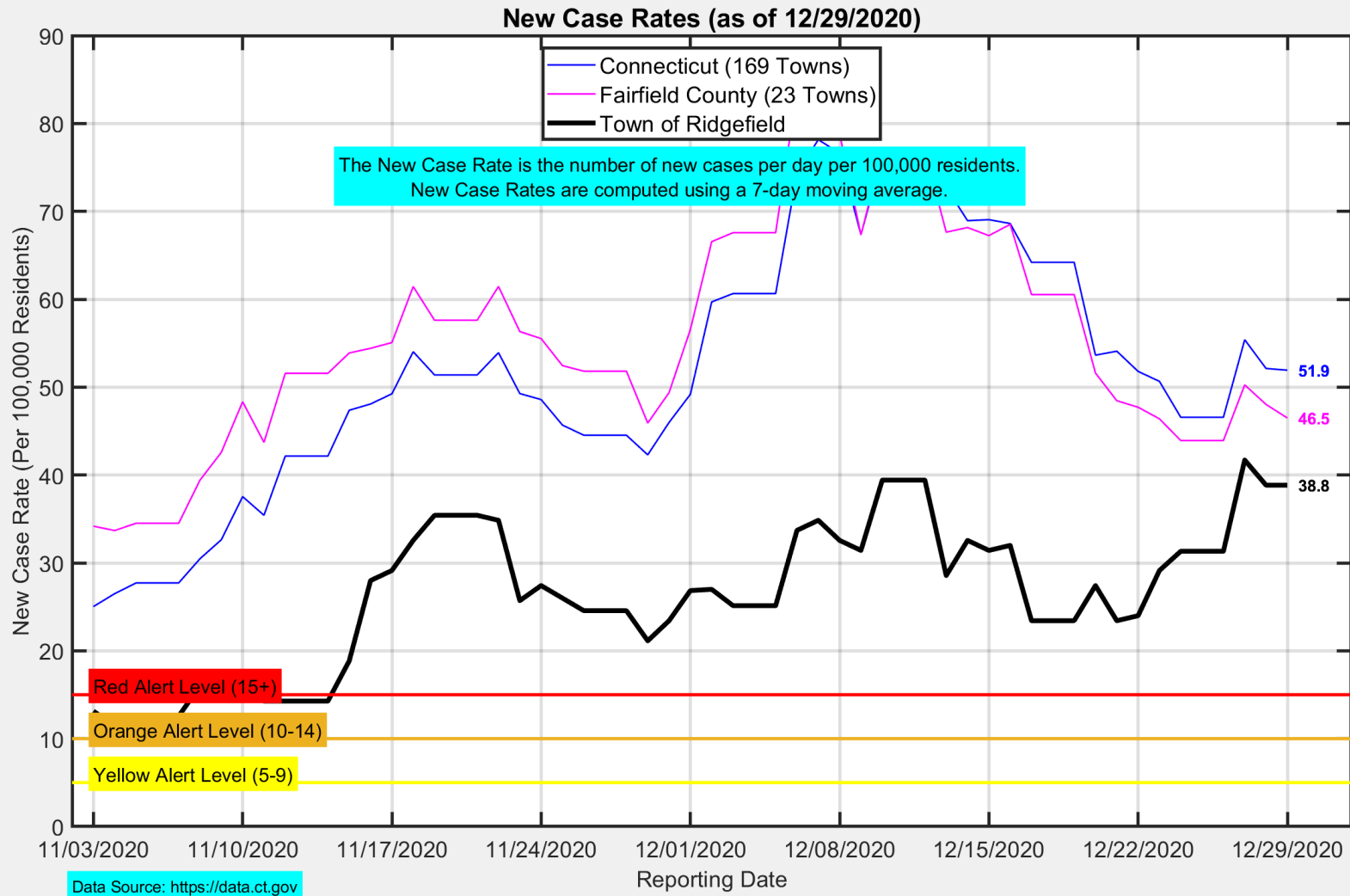
Town of Ridgefield: Test Positivity Rate



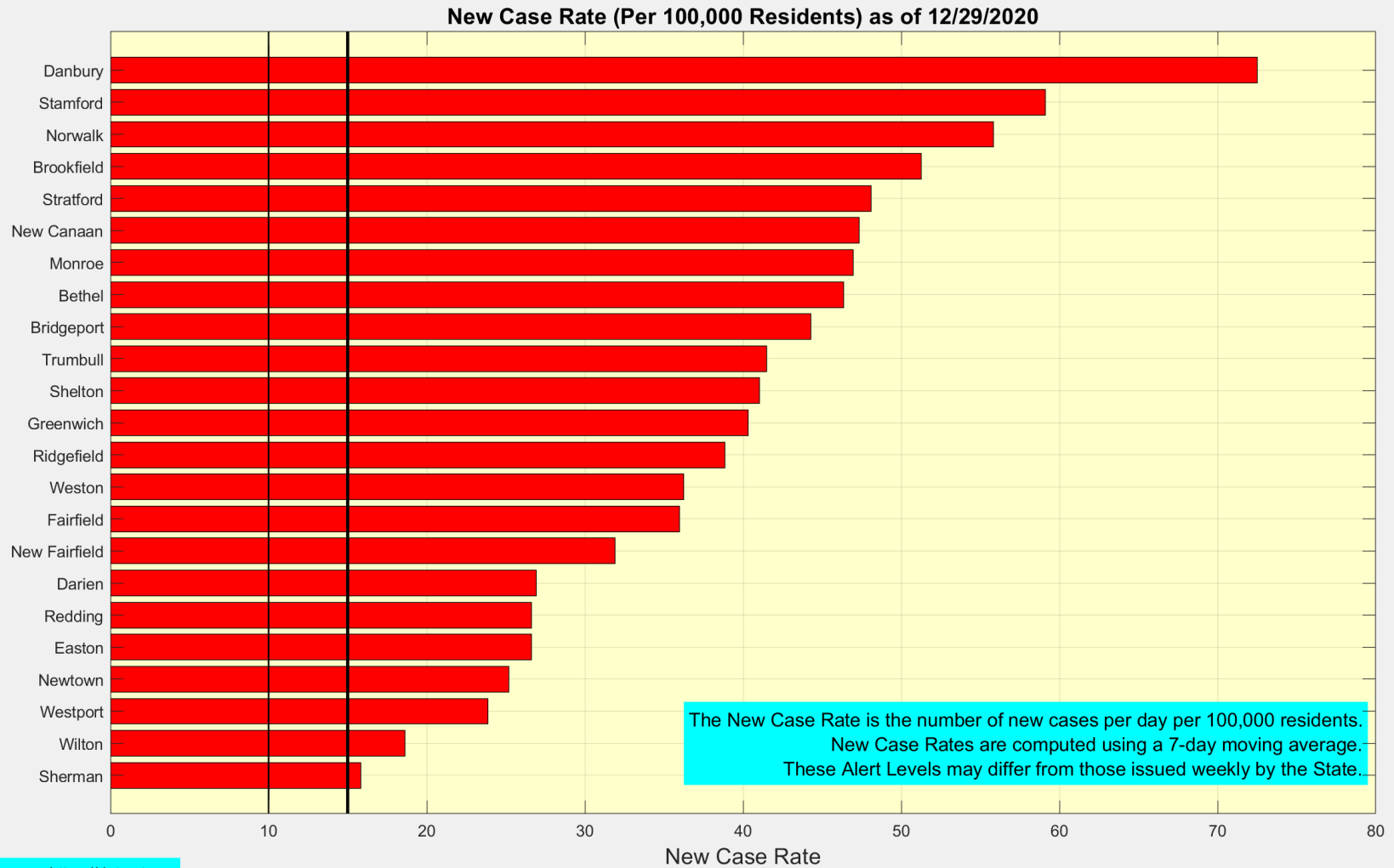
Data Source: <https://data.ct.gov>



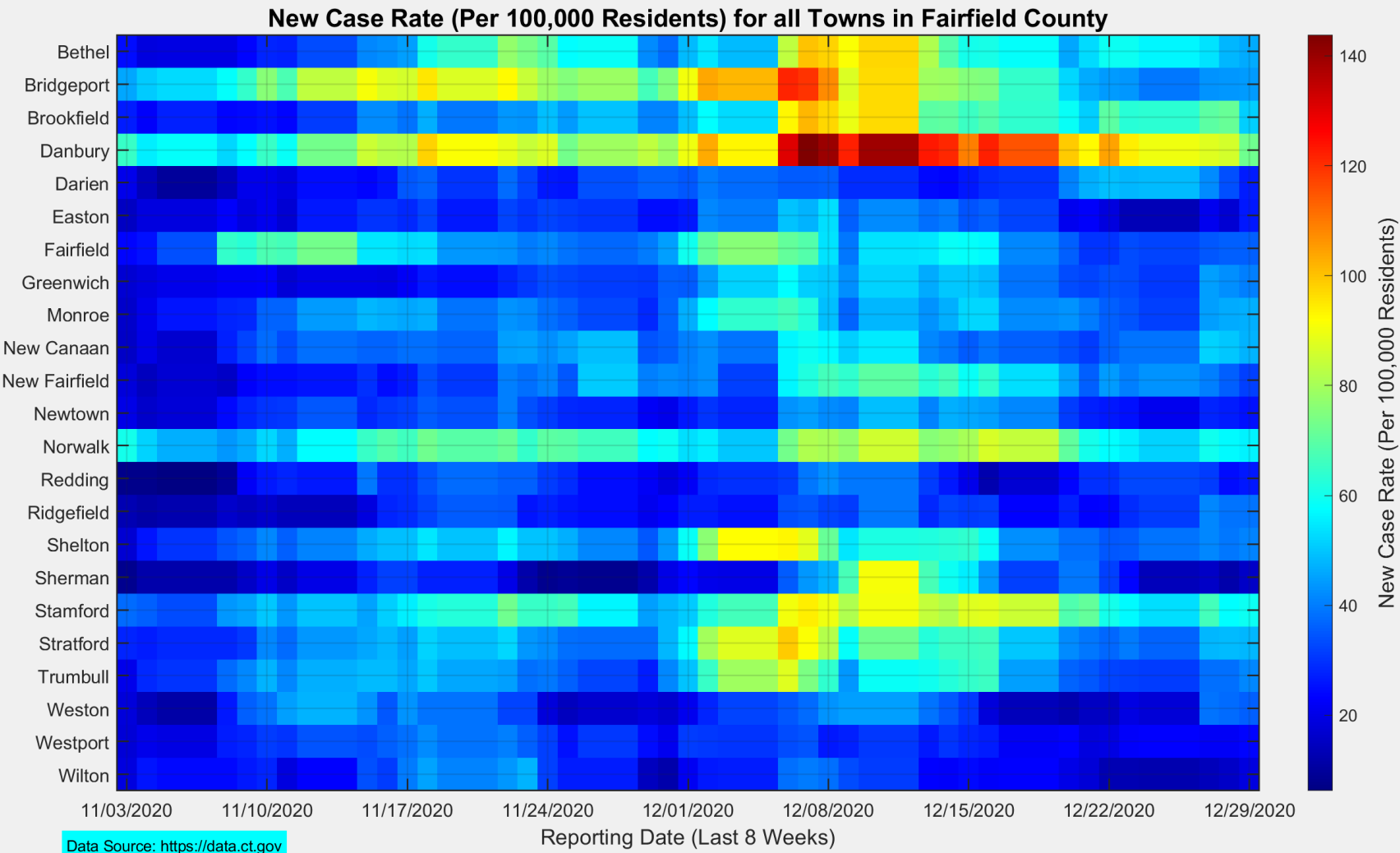
The New Case Rate in Ridgefield is unchanged at 38.8



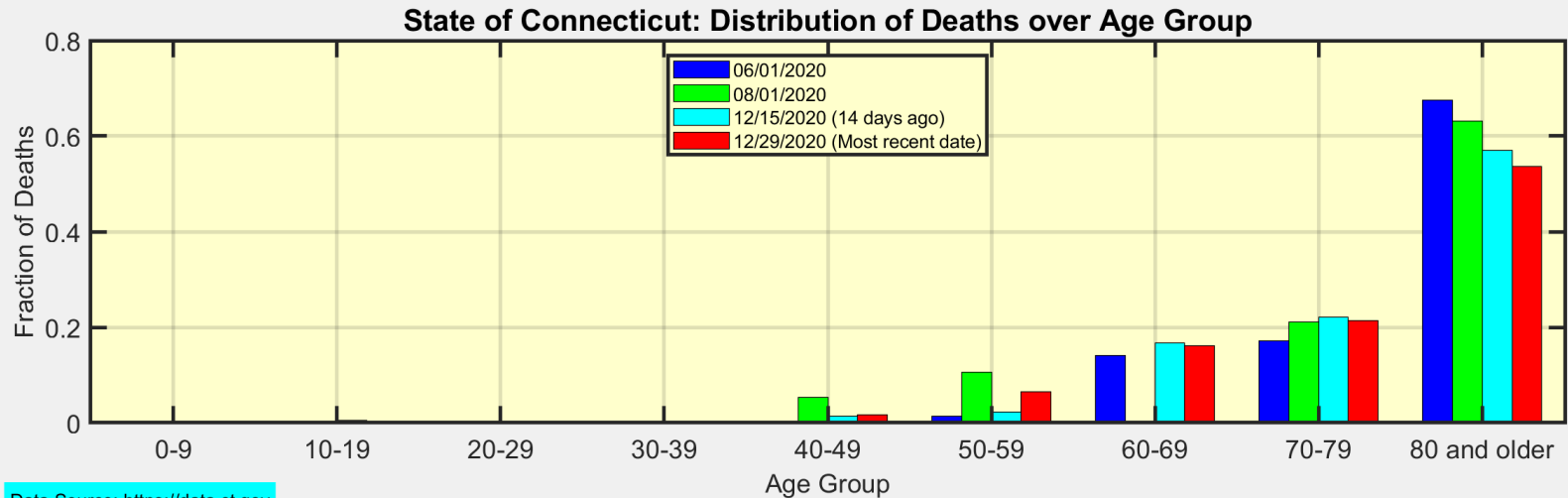
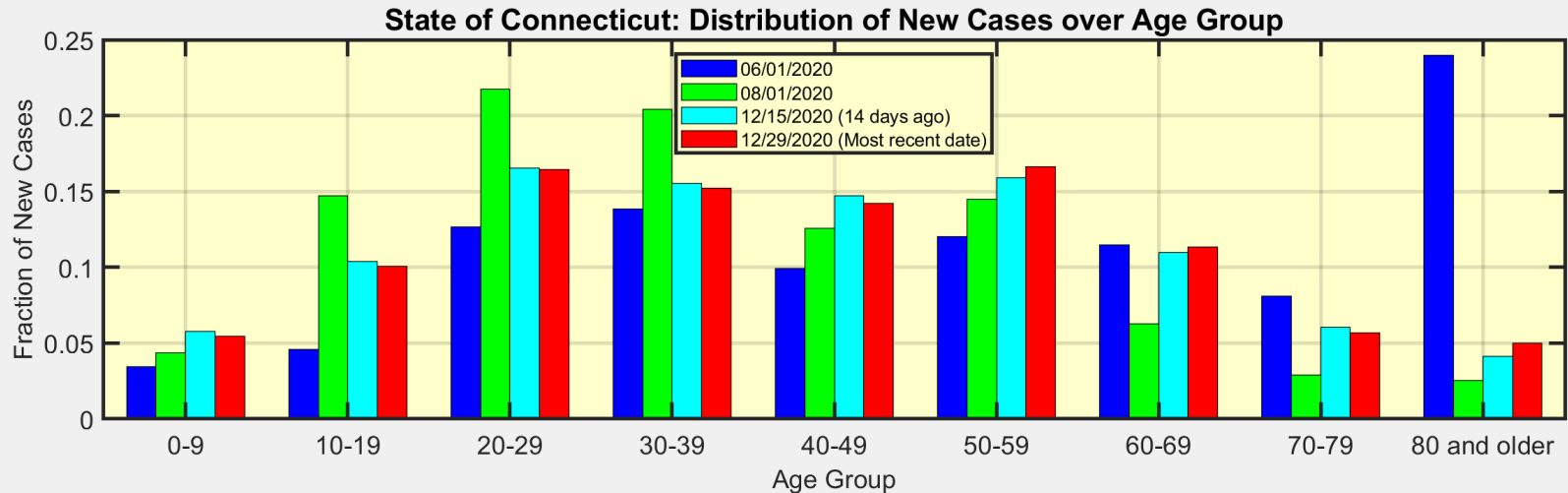
Here are the latest New Case Rates for all towns in Fairfield County



This heat map shows the progression of New Case Rates for all towns in Fairfield County



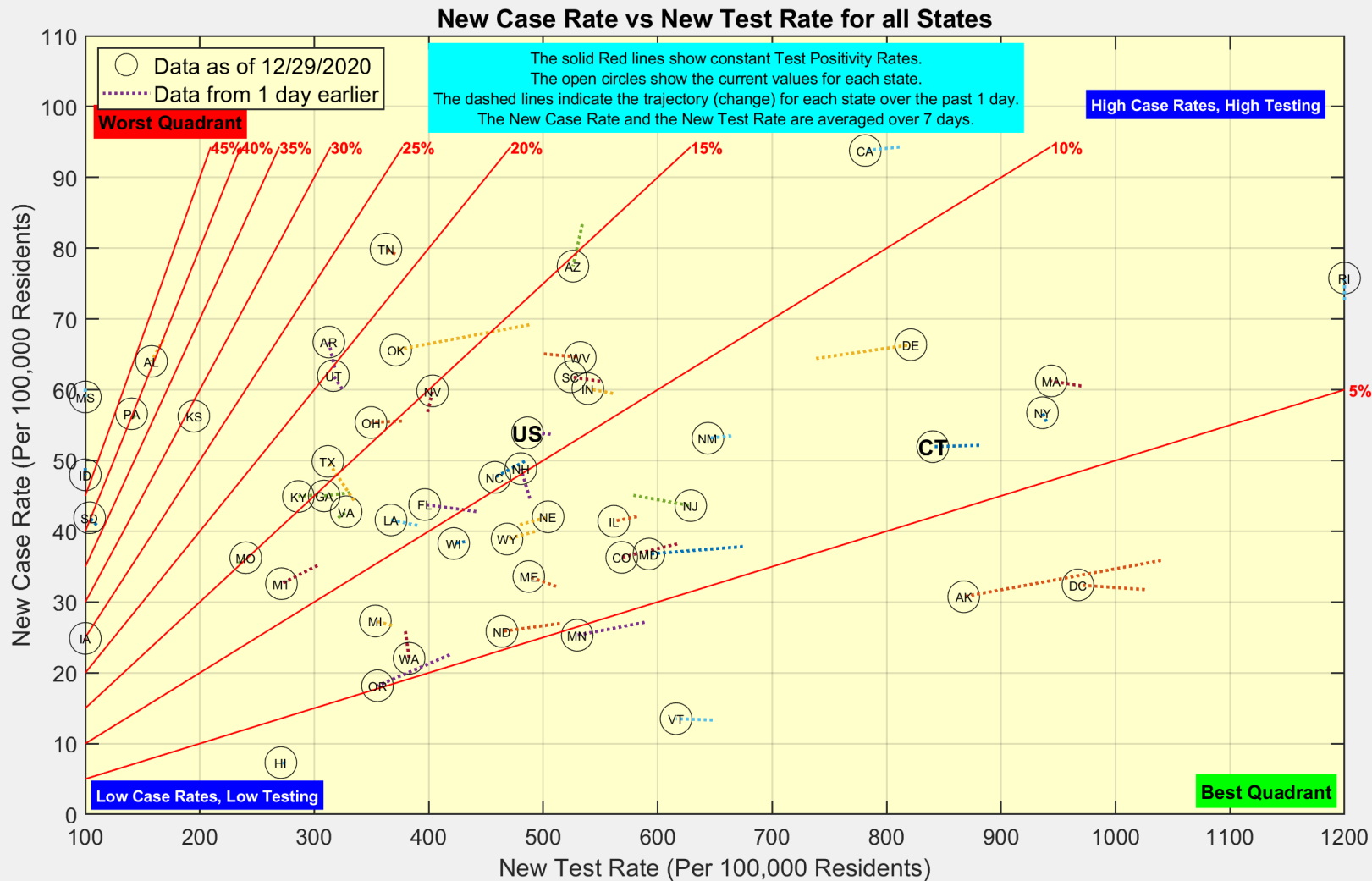
These are the distributions of New Cases and Deaths over age group for the State of Connecticut



Data Source: <https://data.ct.gov>



Here is the latest view of New Cases and New Tests for all states

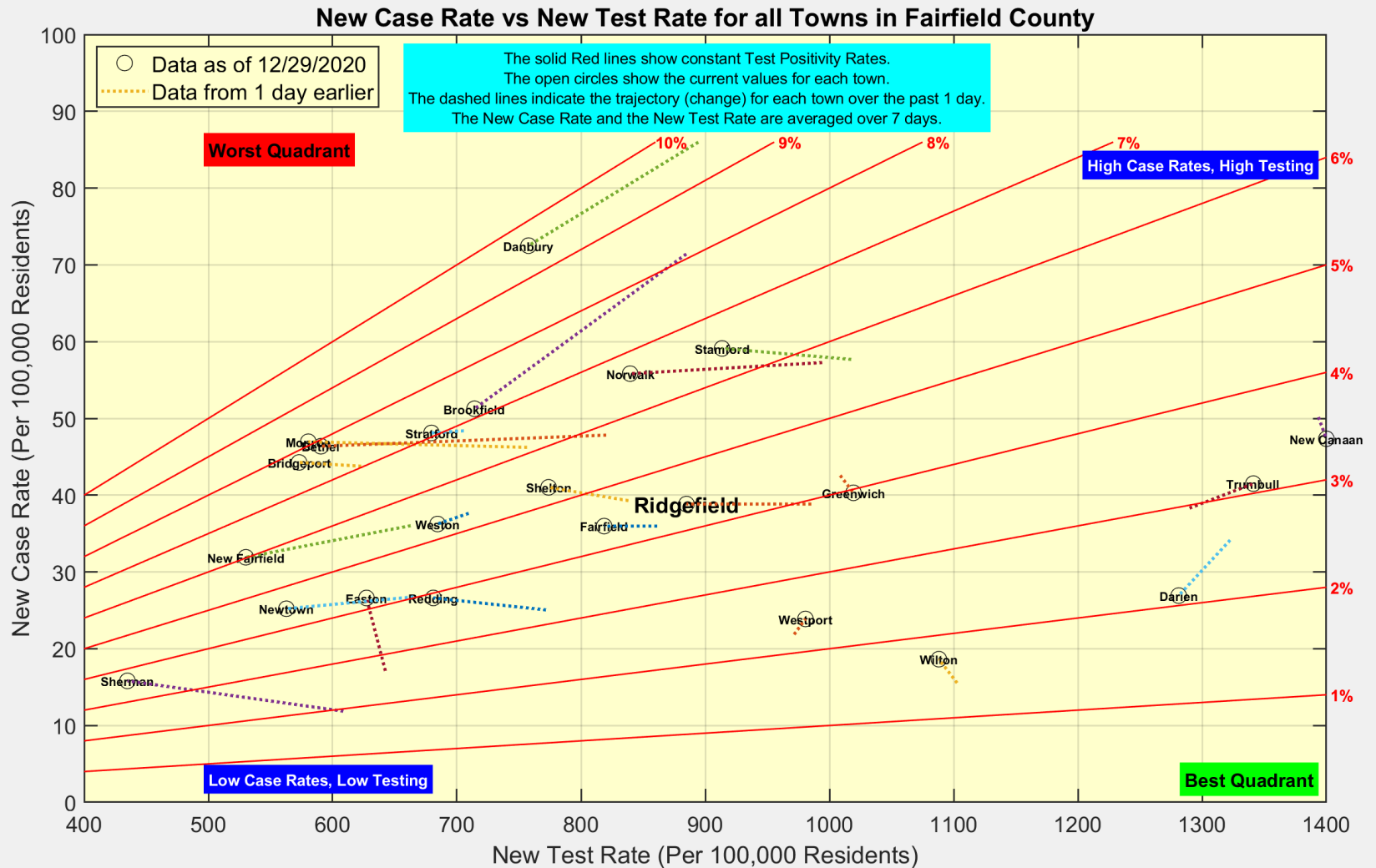


Data Source: <https://covidtracking.com/data/api>



Ridgefield COVID-19 Task Force

Here is the latest view of New Cases and New Tests for all towns in Fairfield County



Data Source: <https://data.ct.gov>



Ridgefield COVID-19 Task Force