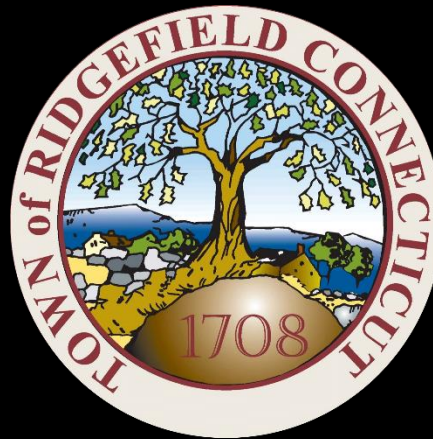


Ridgefield COVID Report

Ridgefield COVID-19 Task Force



Data downloaded from
<https://data.ct.gov/browse?category=Health+and+Human+Services>

Data downloaded on Friday, January 22, 2021 at 4:00 PM
This reflects data through Thursday, January 21, 2021

Ridgefield Summary

Data downloaded on Friday, 01/22/2021 at 4:00 PM

Ridgefield	Thursday 01/21/2021	Wednesday 01/20/2021
Number of New Cases Reported	14	8
New Case Rate (per 100,000 Residents)	28.6	26.9
New Test Rate (per 100,000 Residents)	1320.8	1312.8
Test Positivity	2.2%	2.0%
Fairfield County	Thursday 01/21/2021	Wednesday 01/20/2021
Number of New Cases Reported	553	433
New Case Rate (per 100,000 Residents)	50.6	49.7
New Test Rate (per 100,000 Residents)	1587.7	1541.1
Test Positivity	3.2%	3.2%
Currently Hospitalized	250	263

Data Source: <https://data.ct.gov>. This report reflects data reported to the State through Thursday 01/21/2021.

The New Case Rate, New Test Rate, and Test Positivity are computed using 7-day moving averages.

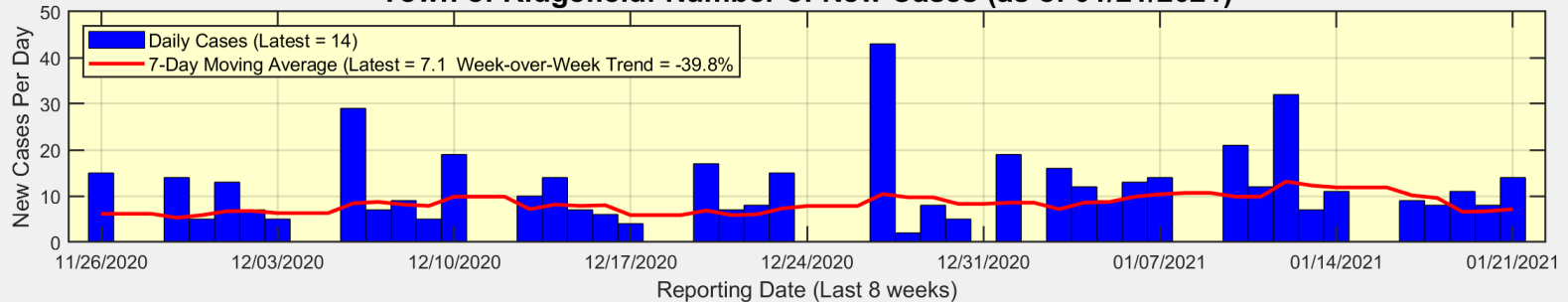
Our data science confirms CDC and other studies:

Wearing a Mask Reduces COVID Case Rates

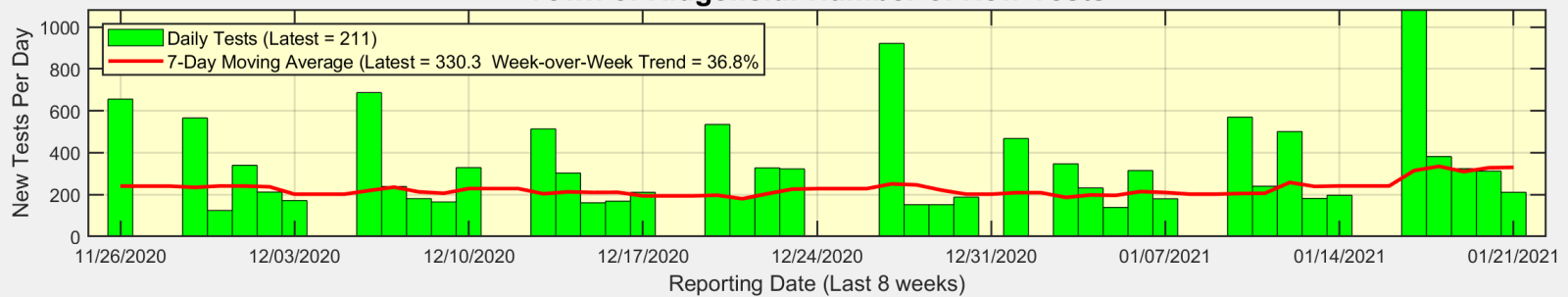


There were 14 new cases reported for Ridgefield on Thursday

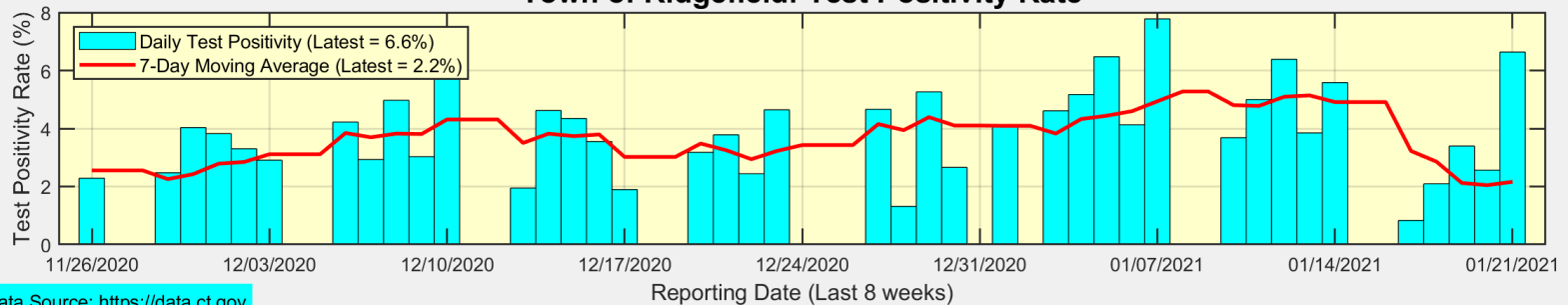
Town of Ridgefield: Number of New Cases (as of 01/21/2021)



Town of Ridgefield: Number of New Tests



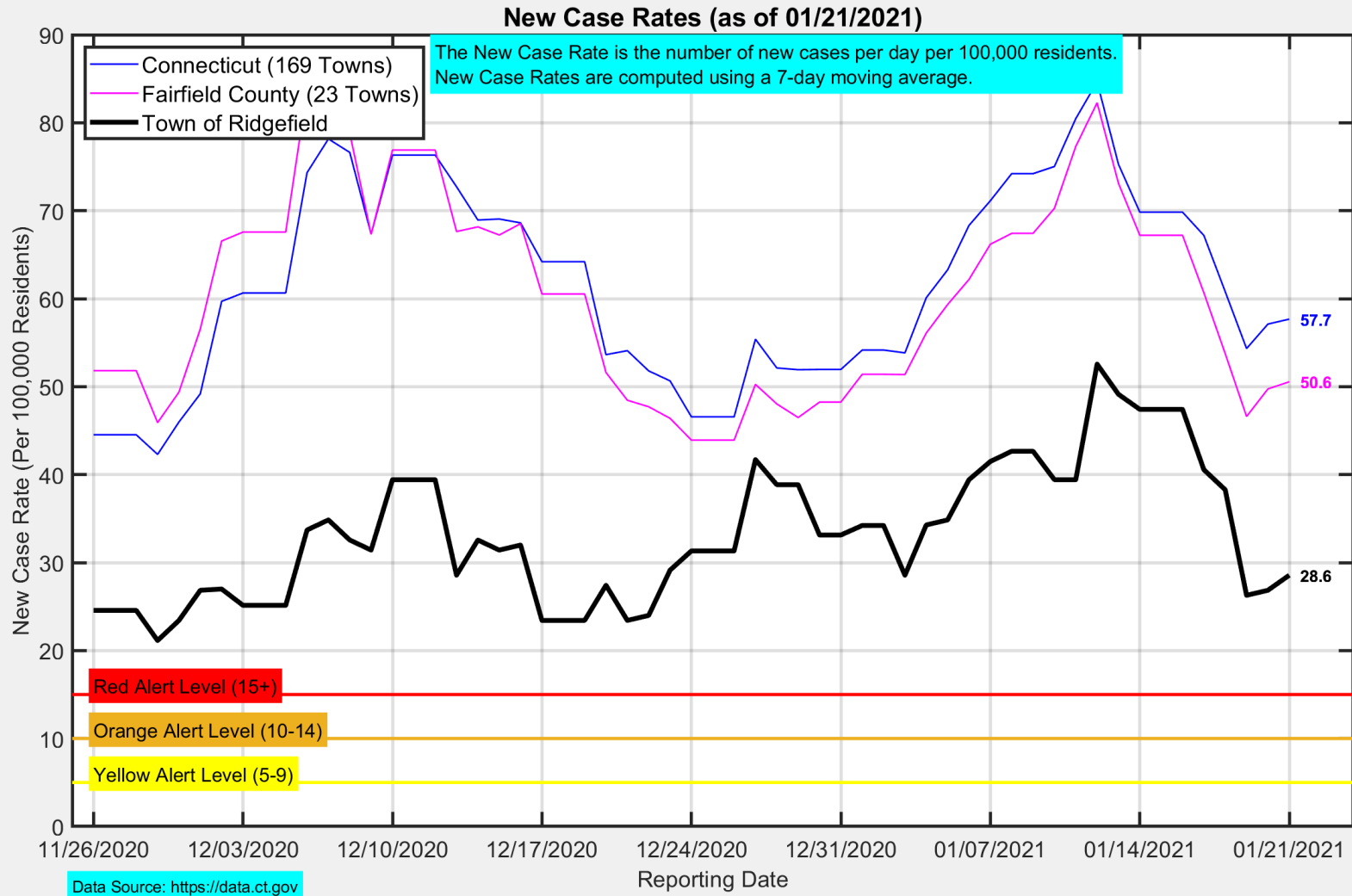
Town of Ridgefield: Test Positivity Rate



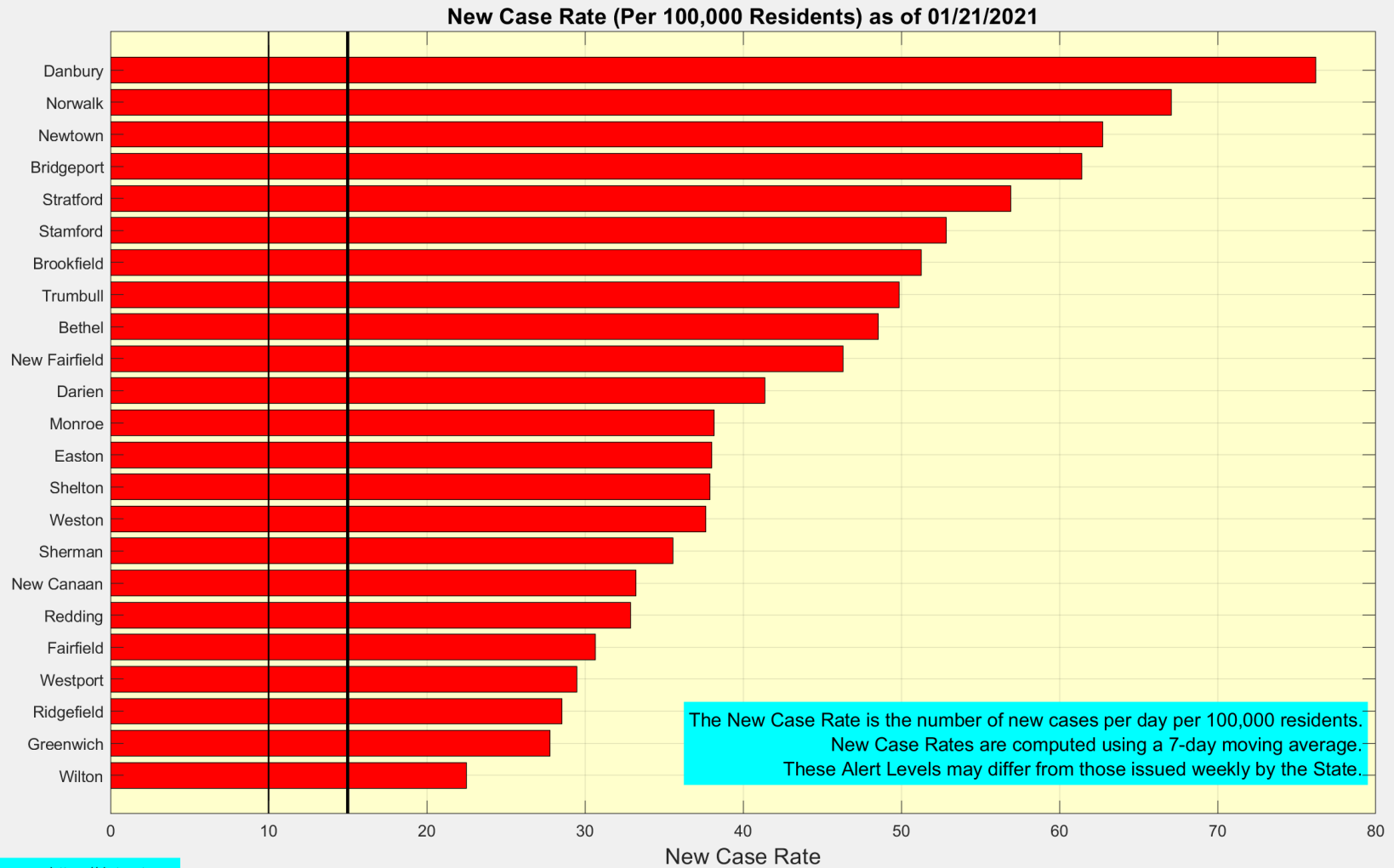
Data Source: <https://data.ct.gov>



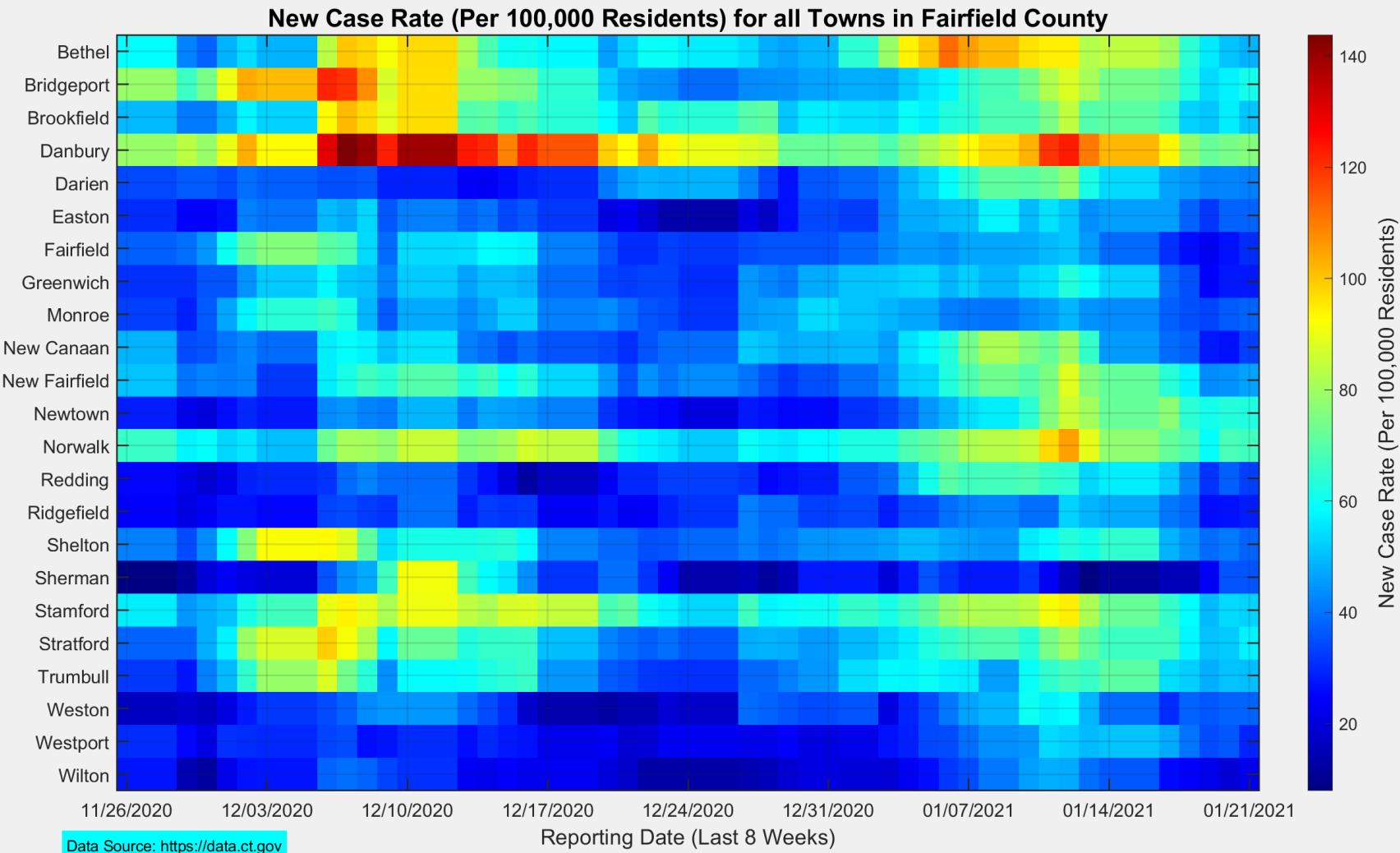
The New Case Rate in Ridgefield remained stable at 28.6



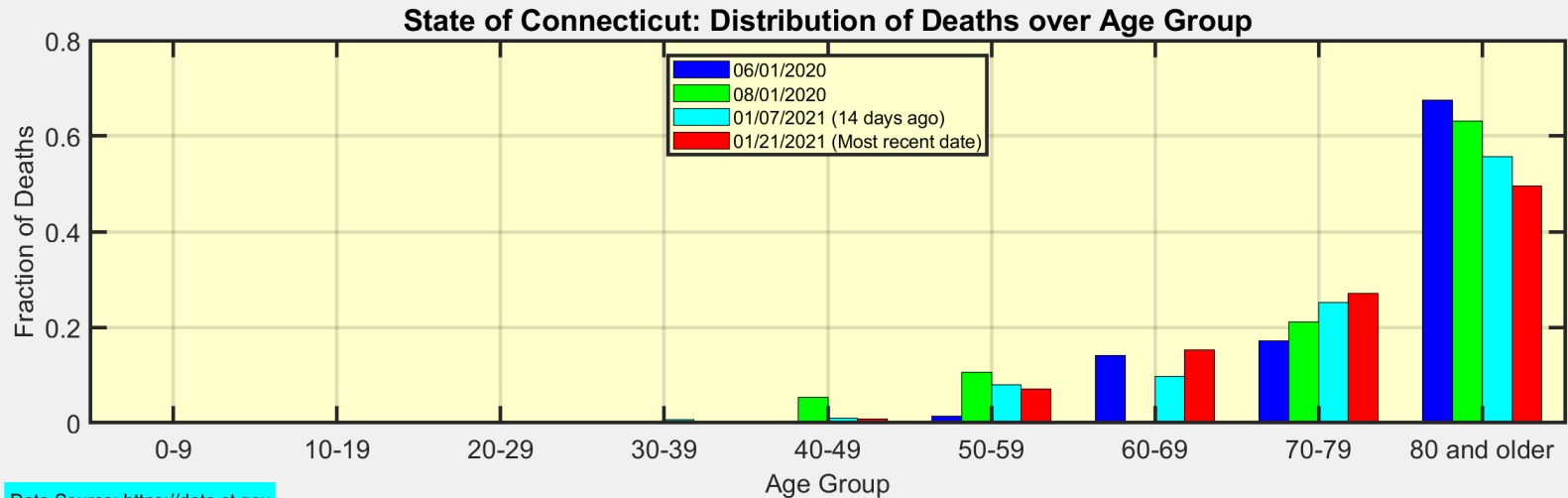
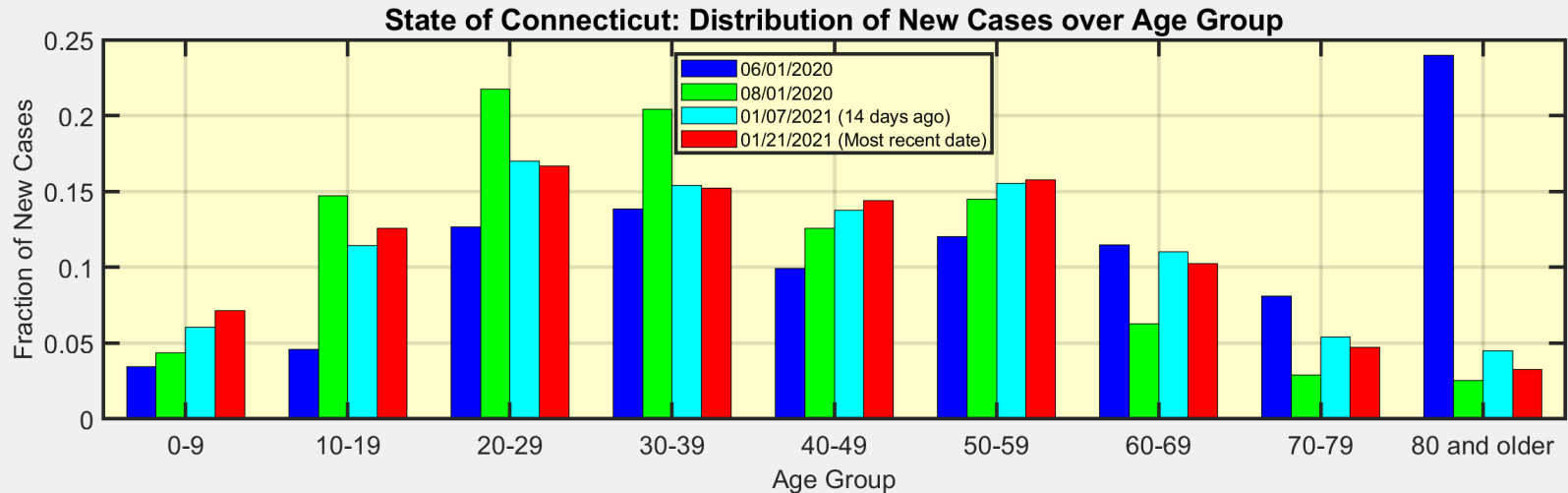
Here are the latest New Case Rates for all towns in Fairfield County



This heat map shows the progression of New Case Rates for all towns in Fairfield County



These are the distributions of New Cases and Deaths over age group for the State of Connecticut



Data Source: <https://data.ct.gov>



Introduction to Scatter Plot of New Case Rates vs New Test Rates

y-axis

x-axis

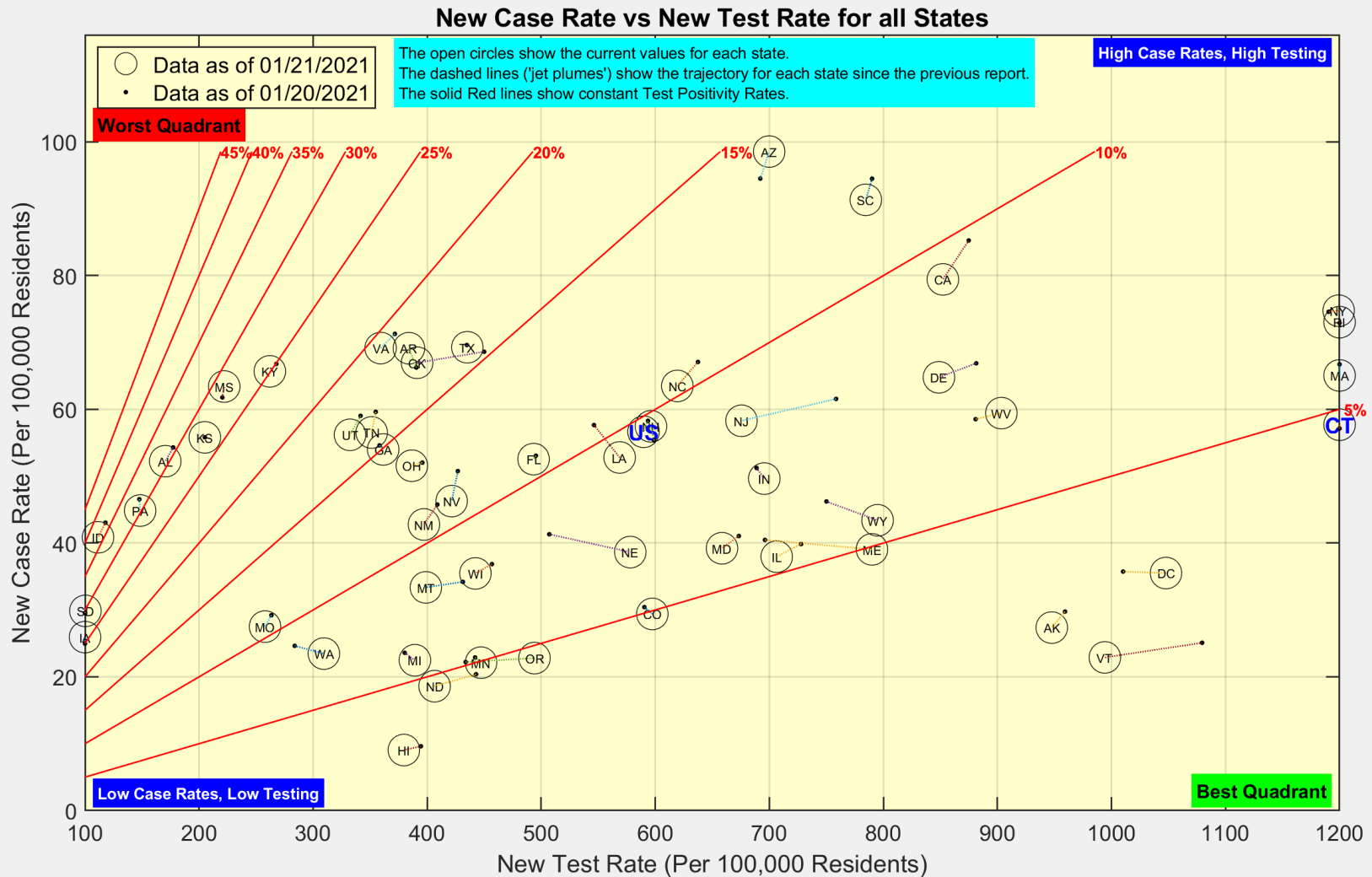
Red Diagonal Lines

$$\begin{array}{l} \text{New Case Rate} \\ \left[\frac{\text{New Cases}}{100,000 \text{ Residents}} \right] \end{array} = \begin{array}{l} \text{New Test Rate} \\ \left[\frac{\text{New Tests}}{100,000 \text{ Residents}} \right] \end{array} \times \begin{array}{l} \text{Test Positivity} \\ \left[\frac{\text{New Cases}}{\text{New Tests}} \right] \end{array}$$

The dashed lines can be thought of as 'jet plumes' showing the trajectory of each state since the previous report.



Here is the latest view of New Cases and New Tests for all states

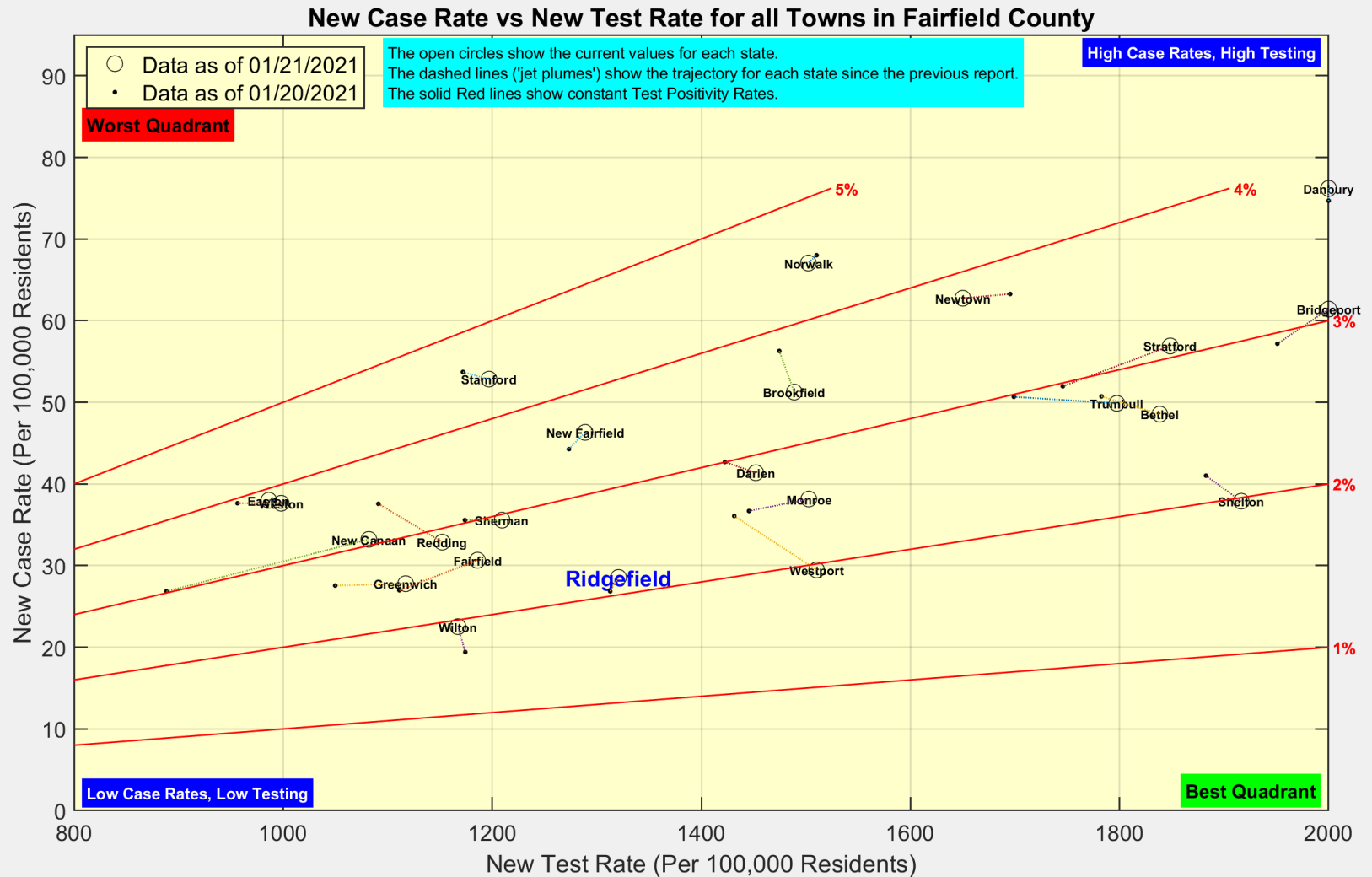


Data Source: <https://covidtracking.com/data/api>



Ridgefield COVID-19 Task Force

Here is the latest view of New Cases and New Tests for all towns in Fairfield County



Data Source: <https://data.ct.gov>



Ridgefield COVID-19 Task Force