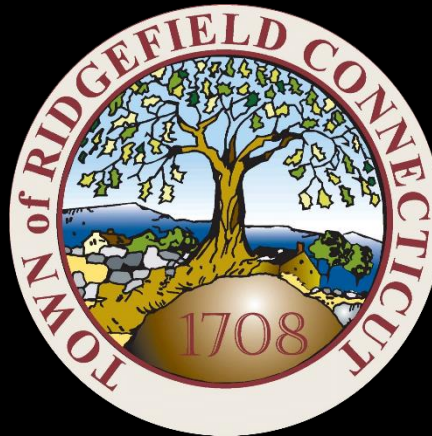


# Ridgefield COVID Report

Ridgefield COVID-19 Task Force



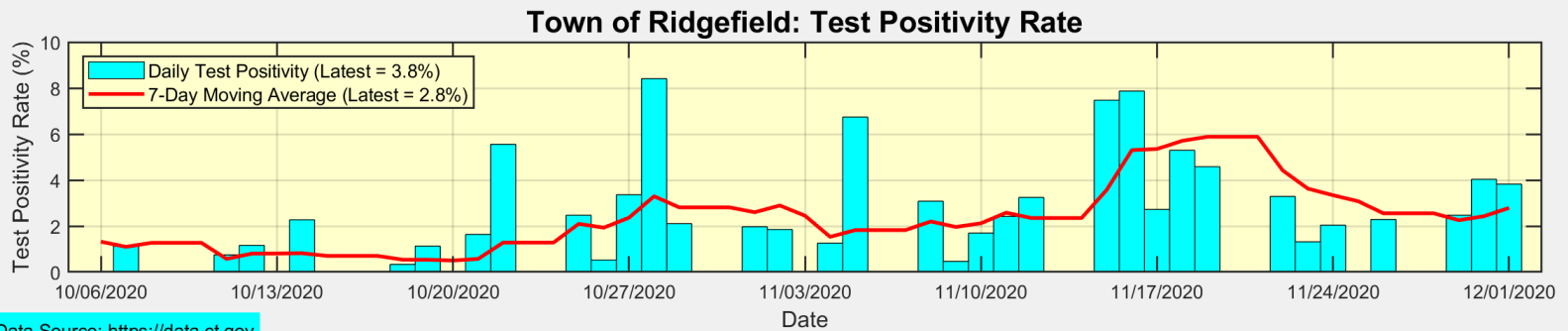
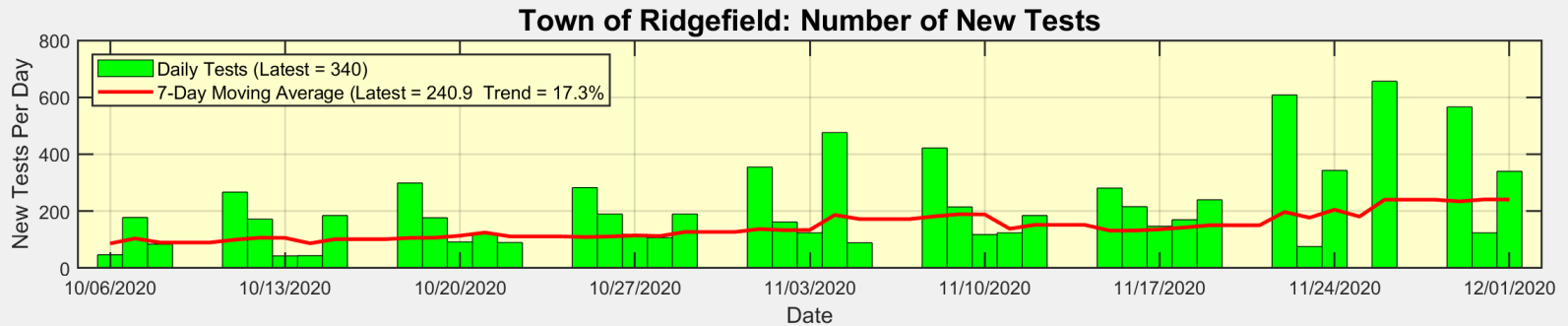
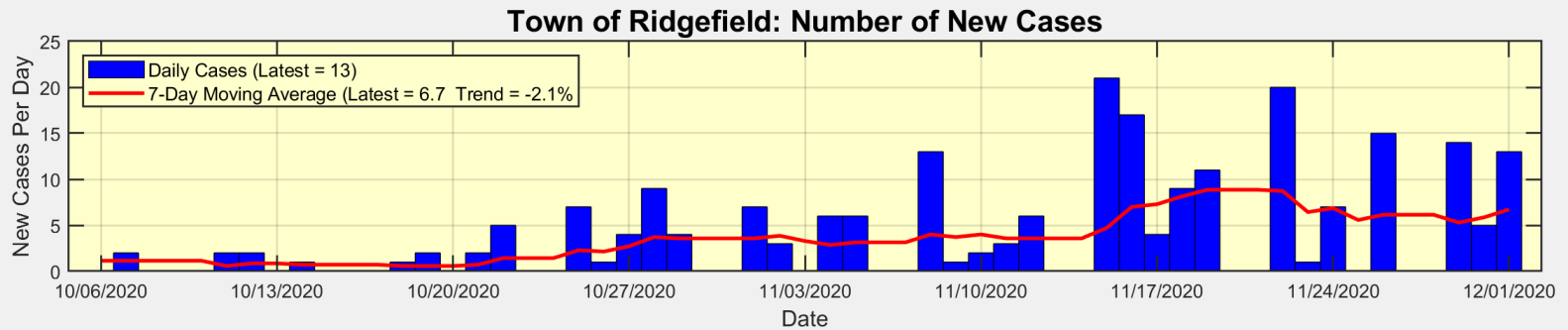
Data downloaded from  
<https://data.ct.gov/browse?category=Health+and+Human+Services>  
(as of Wednesday December 2, 2020 at 4PM)

## Summary

- There were 13 new cases in Ridgefield yesterday
  - The 7-day moving average of new cases increased slightly
- This translates to an increased New Case Rate of 26.8 new cases per 100,000 residents
  - This number has been relatively stable over the past 8 days
- The Test Positivity rate (averaged over the past 7 days) has increased slightly to 2.8%
  - This remains one of the lowest rates among towns in Fairfield County
- Ridgefield has increased testing over the past 7 days, with reduced Test Positivity
  - This is a generally favorable trend
- We all understand that the coming weeks will present significant new challenges
  - We must all commit to continue the mitigation efforts that have made a measurable impact so far.



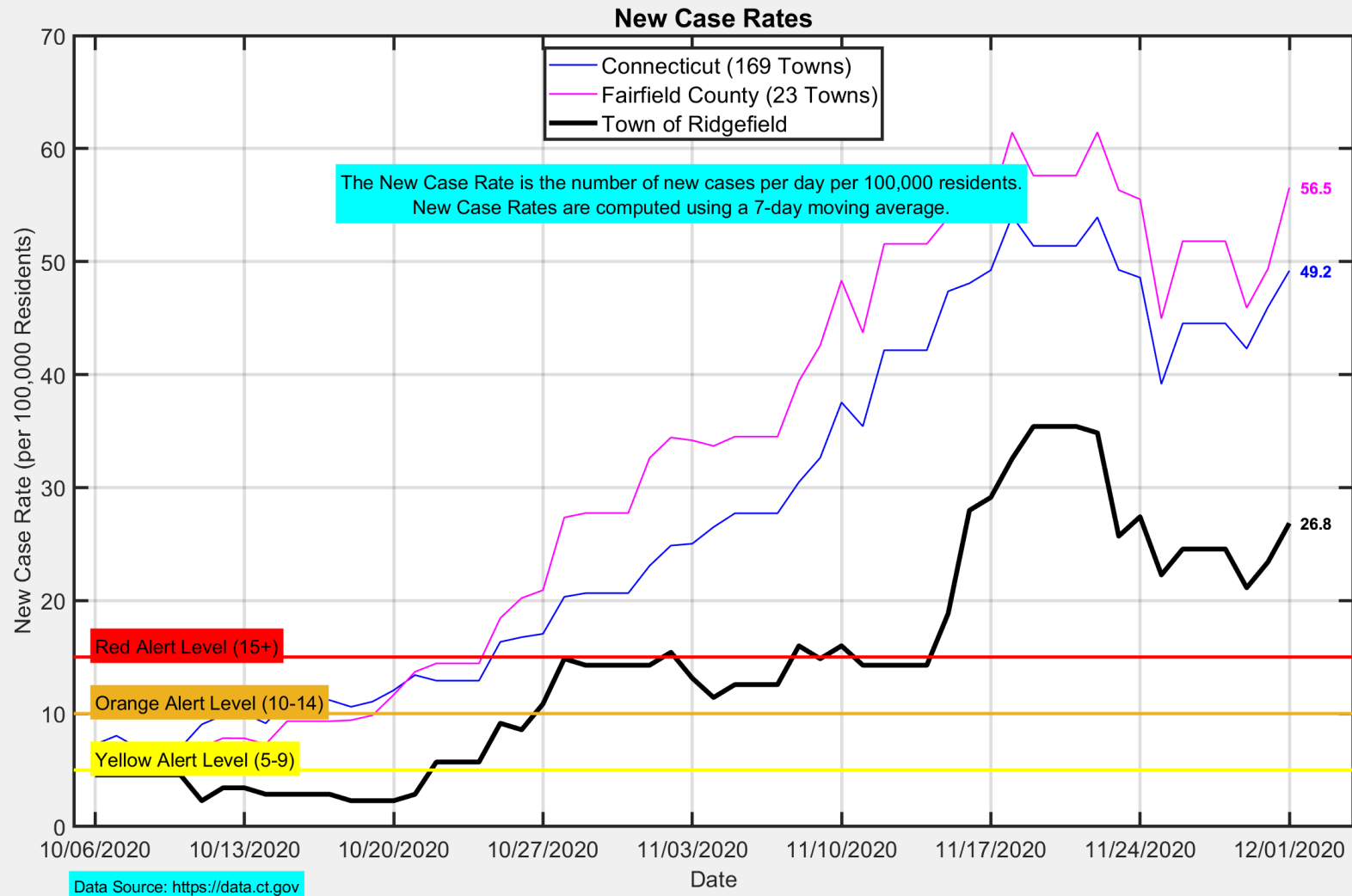
# There were 13 new cases reported in Ridgefield yesterday



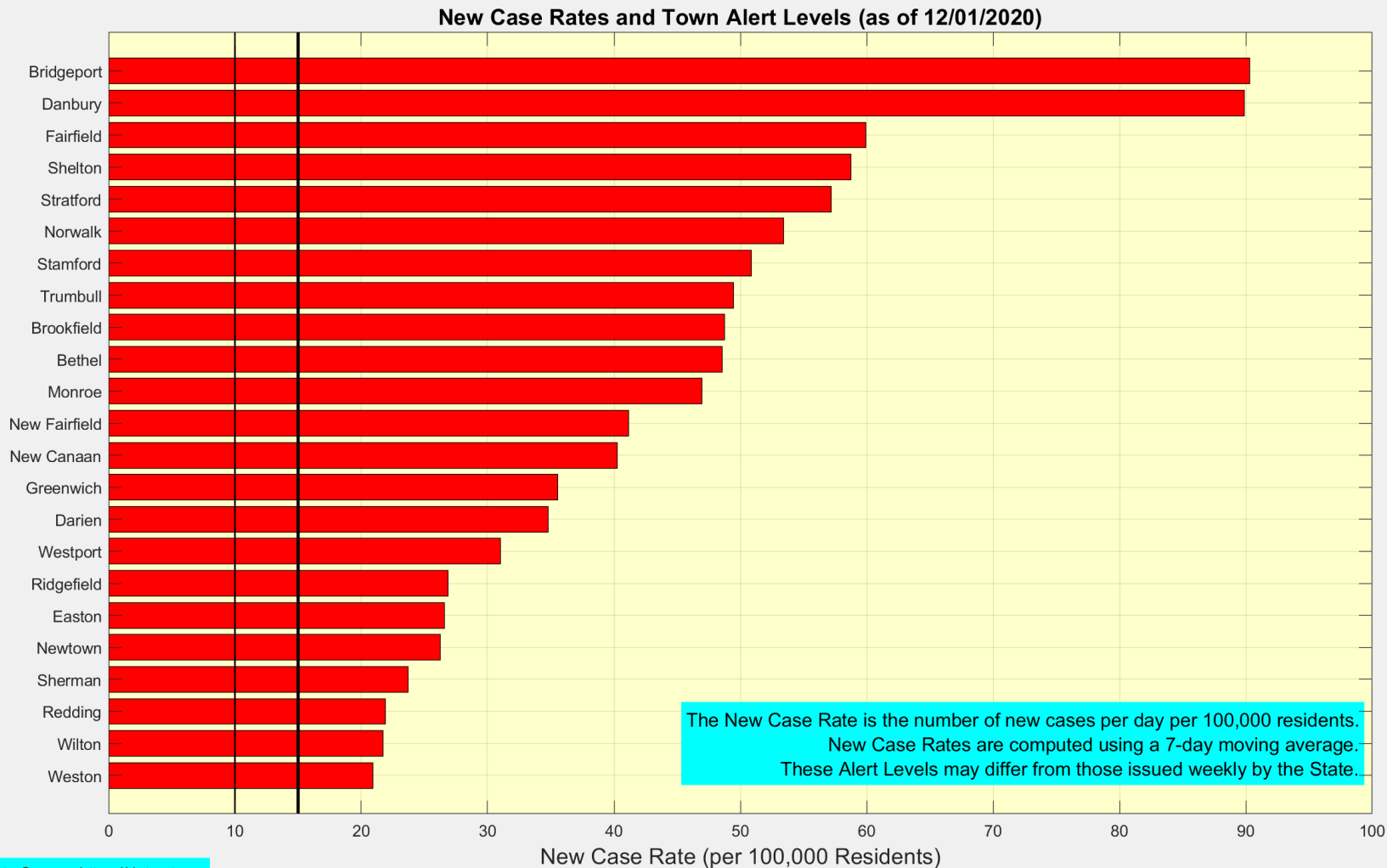
Data Source: <https://data.ct.gov>



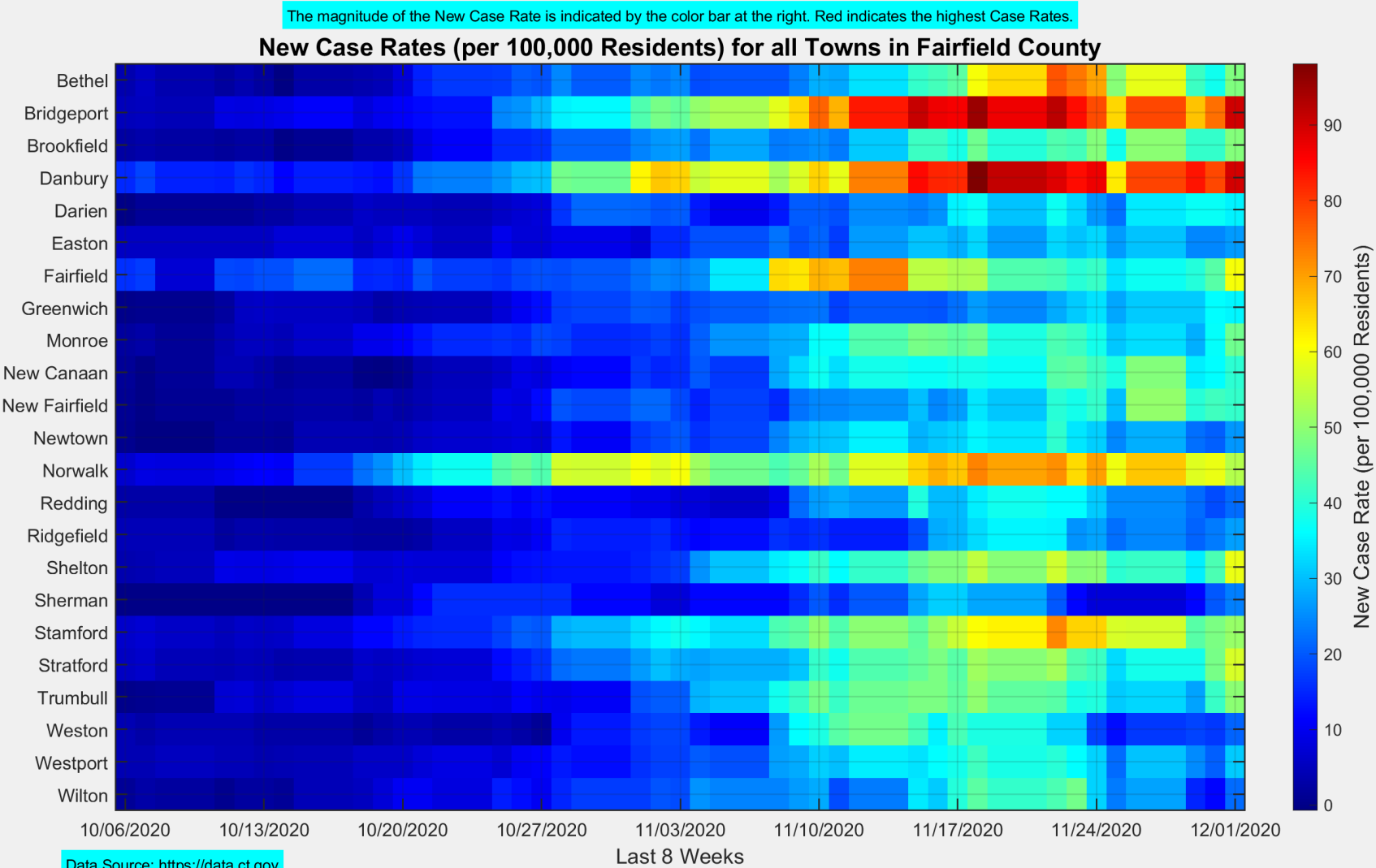
# The Ridgefield New Case Rate increased slightly to 26.8 per 100,000 residents



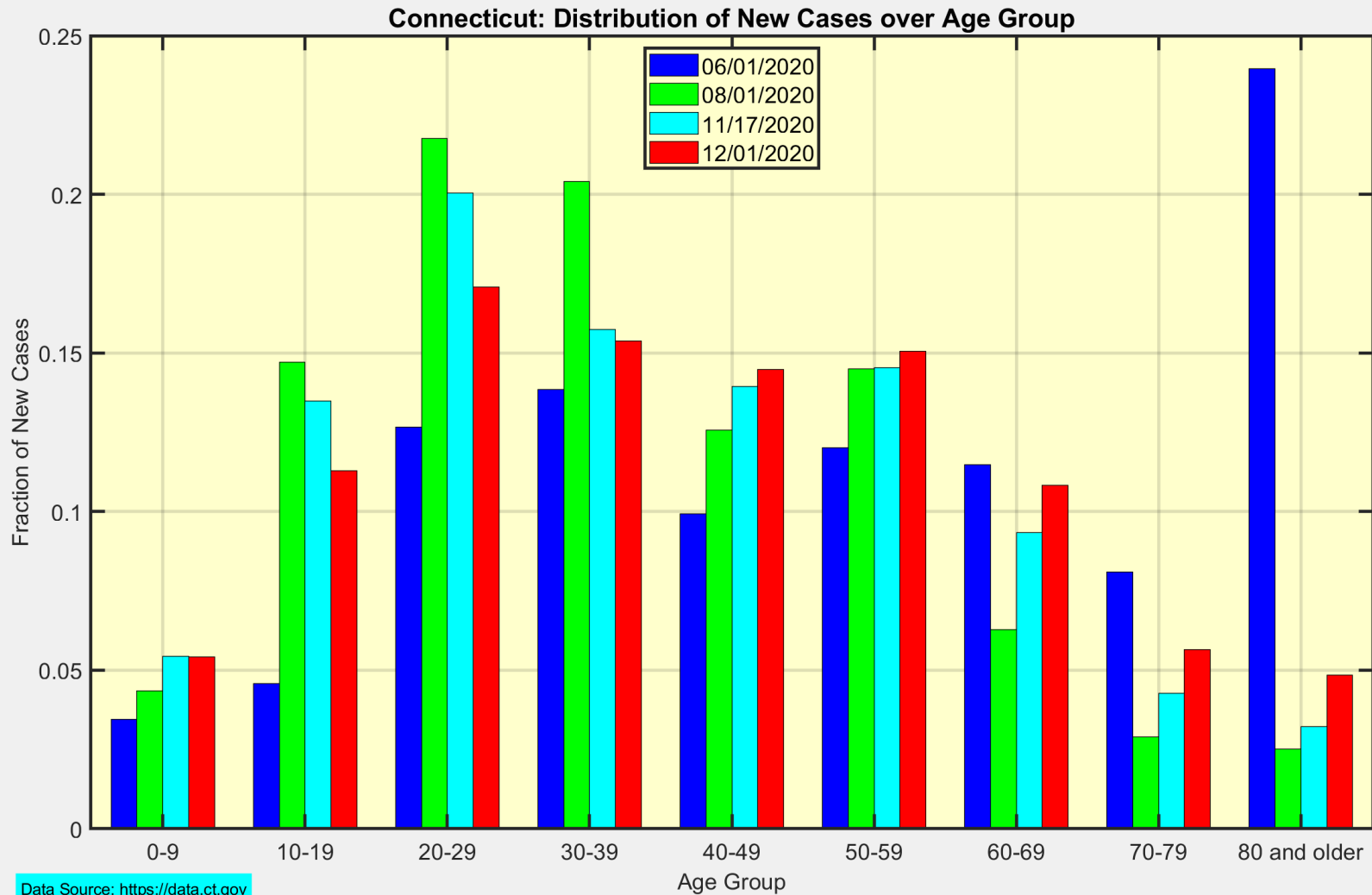
# Ridgefield has one of the lower New Case Rates in Fairfield County



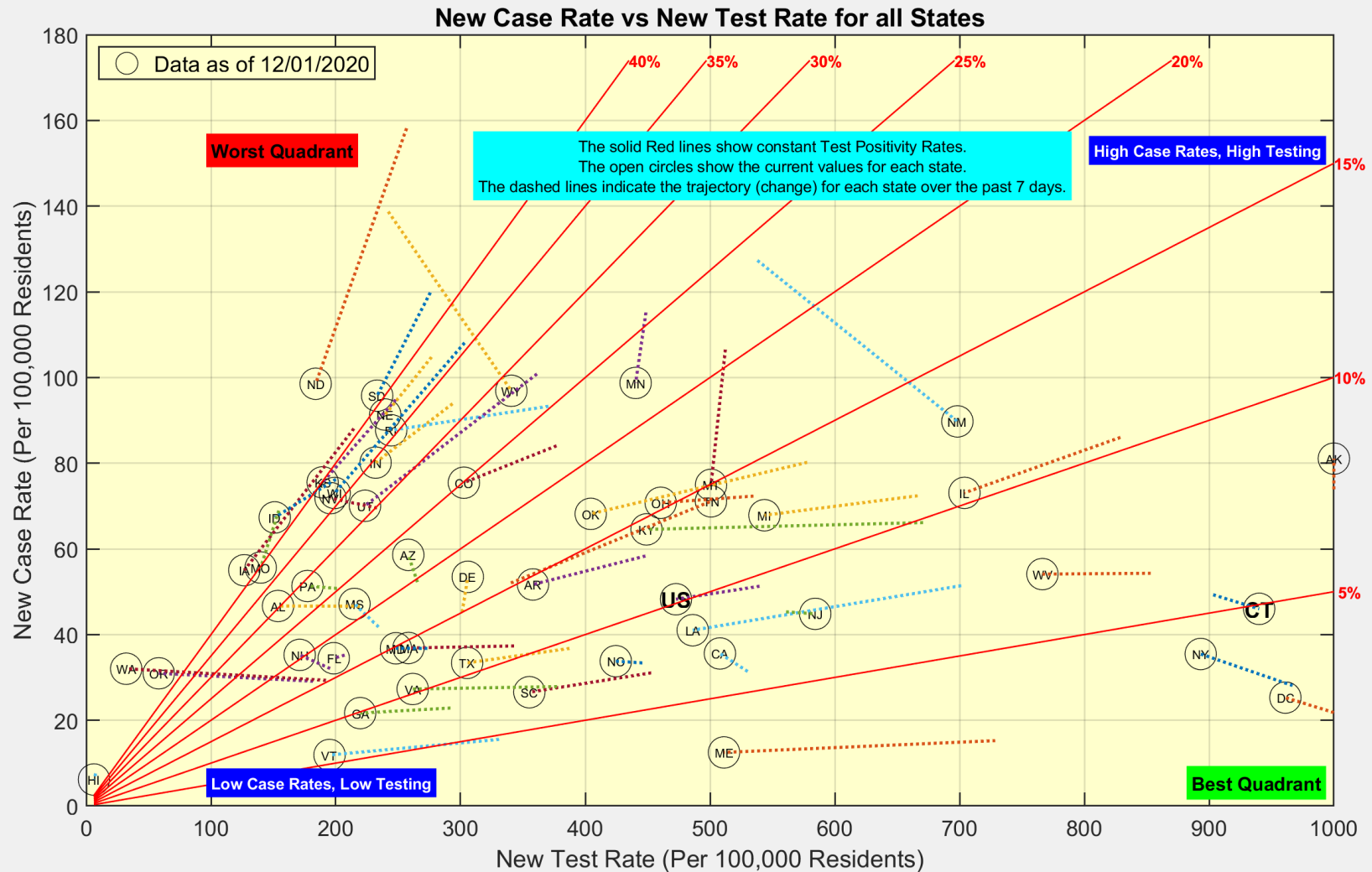
# This heat map shows the progression of New Case Rates for all towns in Fairfield County



# This is the distribution of New Cases over age group for the entire State of Connecticut



# Only DC and Alaska have higher New Test Rates than Connecticut



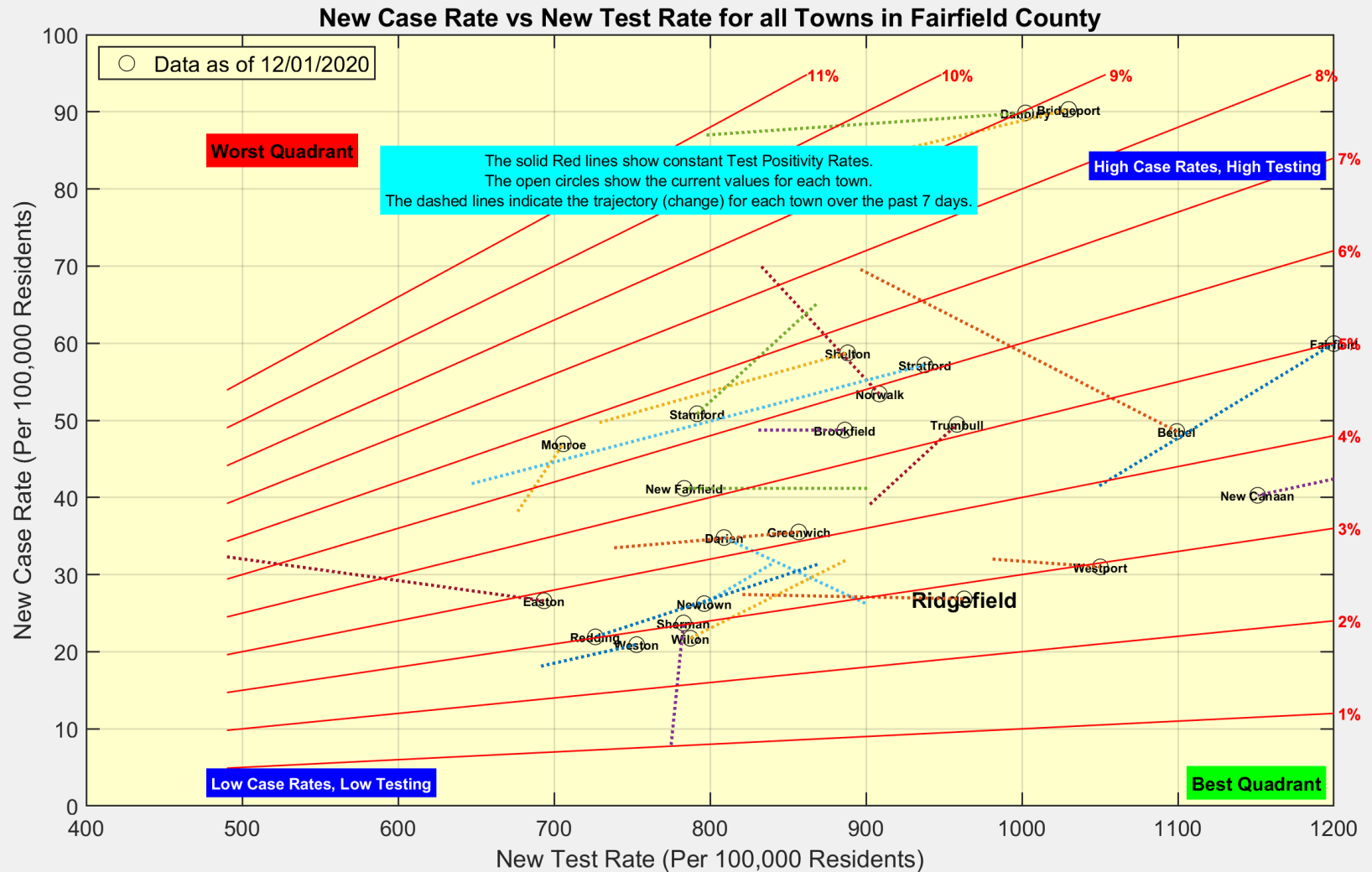
Data Source: <https://covidtracking.com/data/api>



Ridgefield COVID-19 Task Force



## Ridgefield increased testing over past 7 days ... test positivity decreased



Data Source: <https://data.ct.gov>



## Ridgefield COVID-19 Task Force