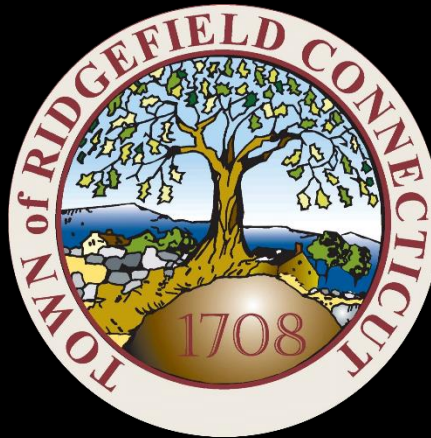


Ridgefield COVID Report

Ridgefield COVID-19 Task Force



Data downloaded from
<https://data.ct.gov/browse?category=Health+and+Human+Services>

Data downloaded as of Monday, December 14, 2020 at 4:00 PM
This reflects data through Sunday, December 13, 2020

Ridgefield Summary

Monday, December 14, 2020 at 4:00 PM

Ridgefield	Sunday 12/13/2020	Thursday 12/10/2020
Number of New Cases Reported	10	19
New Case Rate (per 100,000 Residents)	28.6	39.4
New Test Rate (per 100,000 Residents)	815.7	914.5
Test Positivity	3.5%	4.3%
Fairfield County	Sunday 12/13/2020	Thursday 12/10/2020
Number of New Cases Reported	1693	1106
New Case Rate (per 100,000 Residents)	67.6	76.9
New Test Rate (per 100,000 Residents)	990.9	1062.1
Test Positivity	6.8%	7.2%
Currently Hospitalized	307	322

Data Source: <https://data.ct.gov>

The New Case Rate, New Test Rate, and Test Positivity are computed using 7-day moving averages.

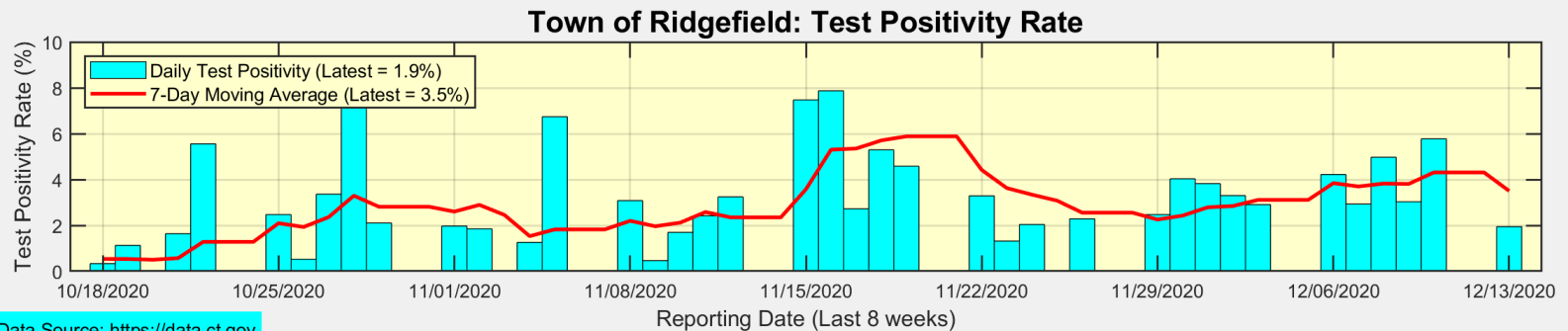
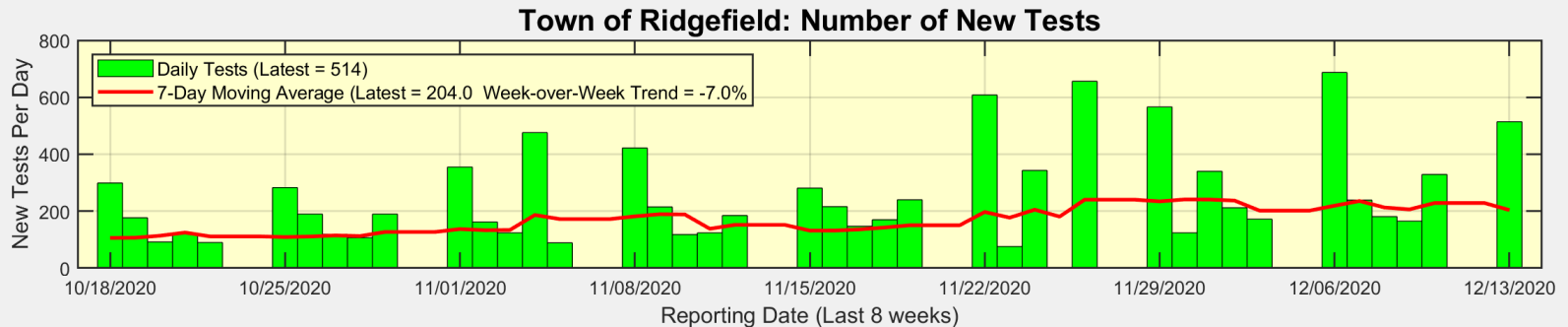
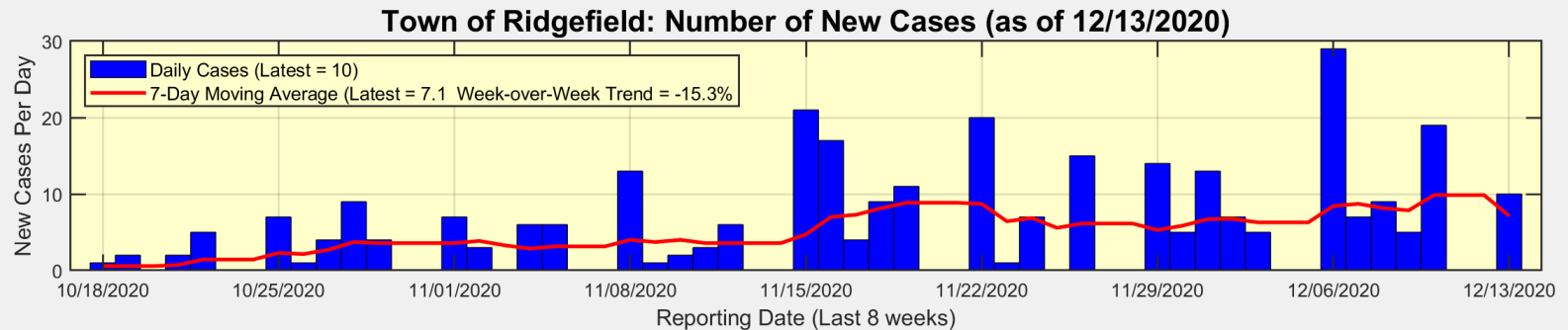
NOTE: The Number of New Cases Reported for Sunday is the SUM of the last THREE DAYS (Friday, Saturday, Sunday).

Our data science confirms CDC and other studies:

Wearing a Mask Reduces COVID Case Rates



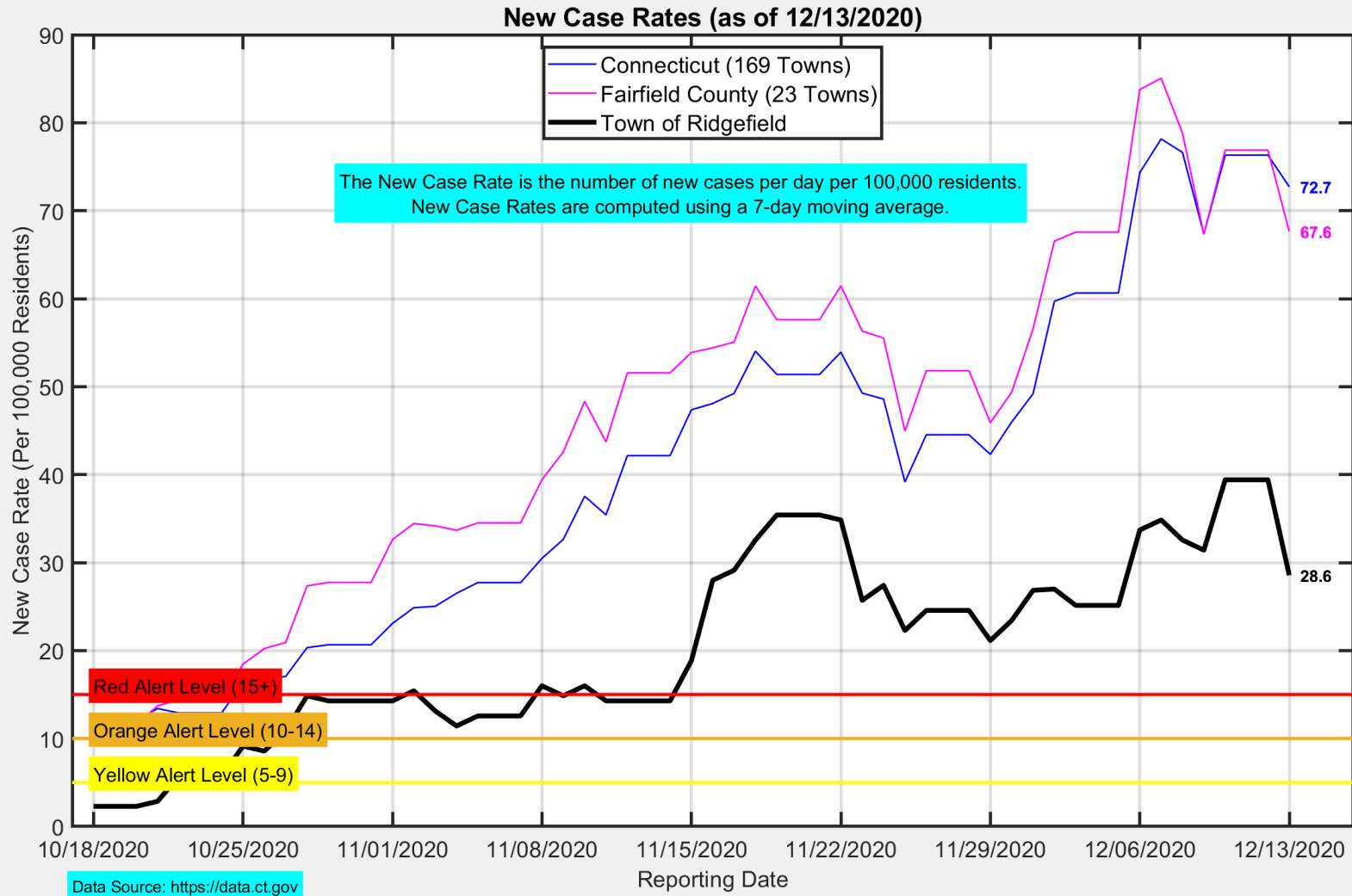
There were 10 new cases reported in Ridgefield over the past 3 days



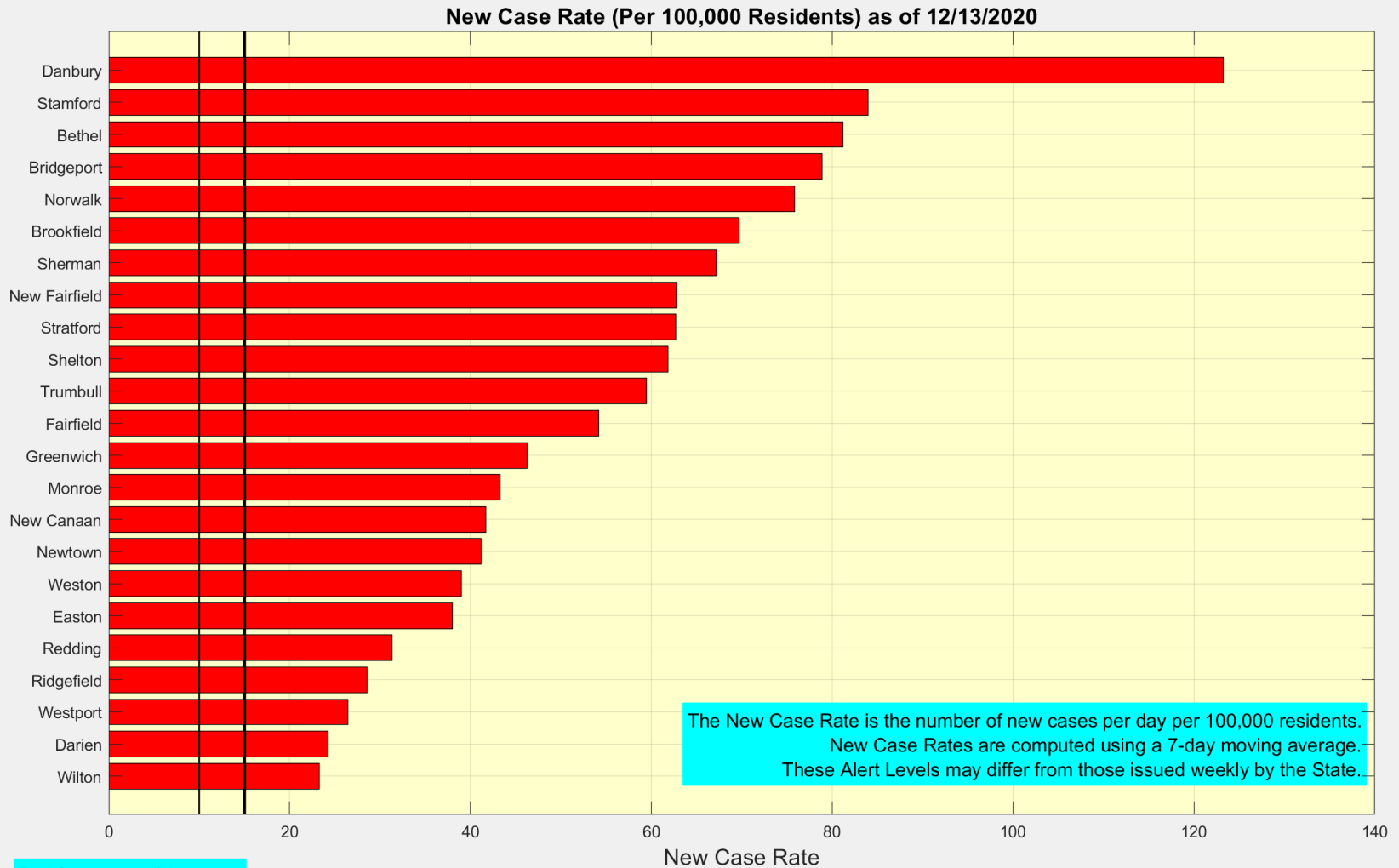
Data Source: <https://data.ct.gov>



The New Case Rate in Ridgefield decreased to 28.6



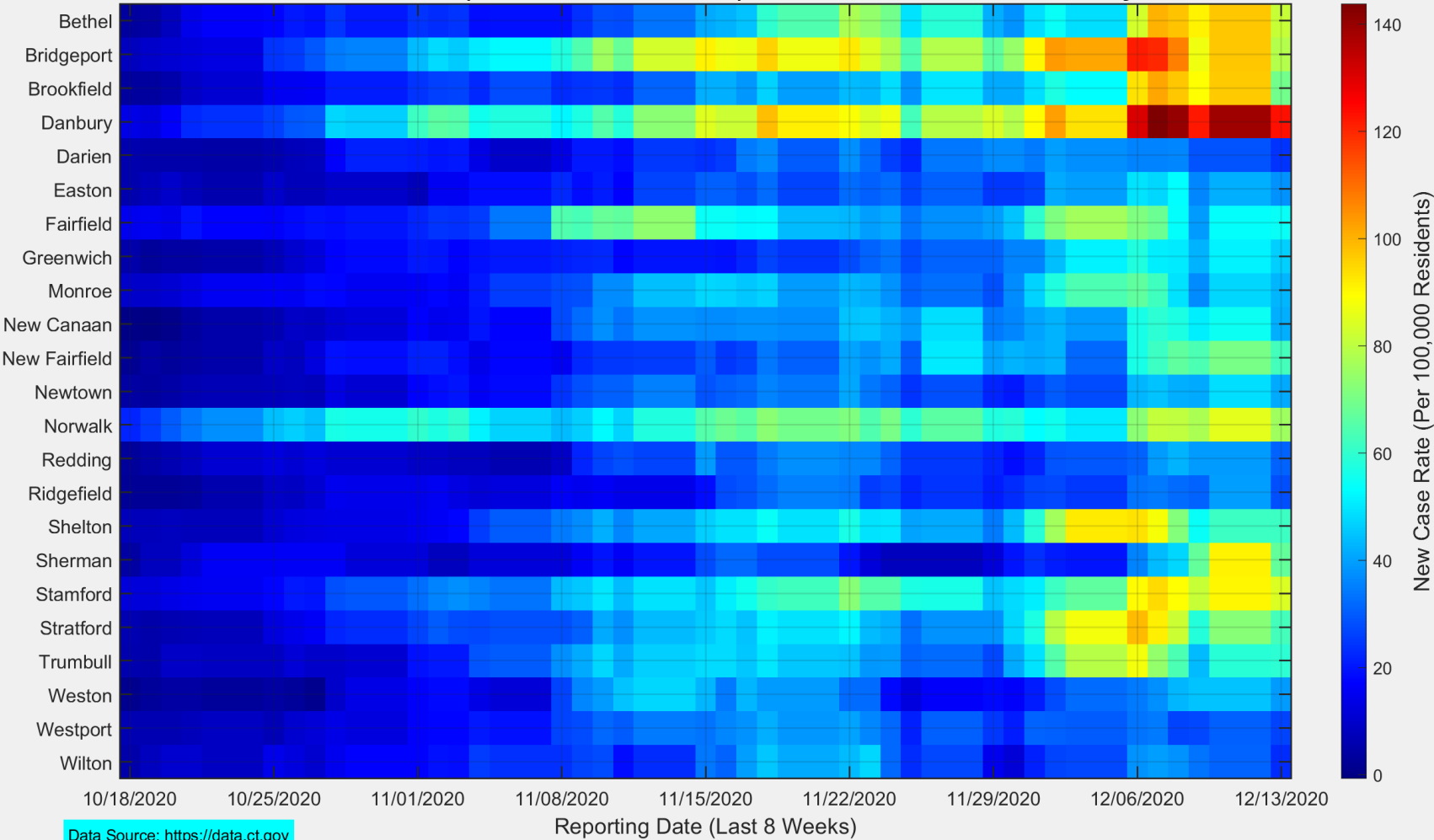
Ridgefield continues to have one of the lower New Case Rates in Fairfield County



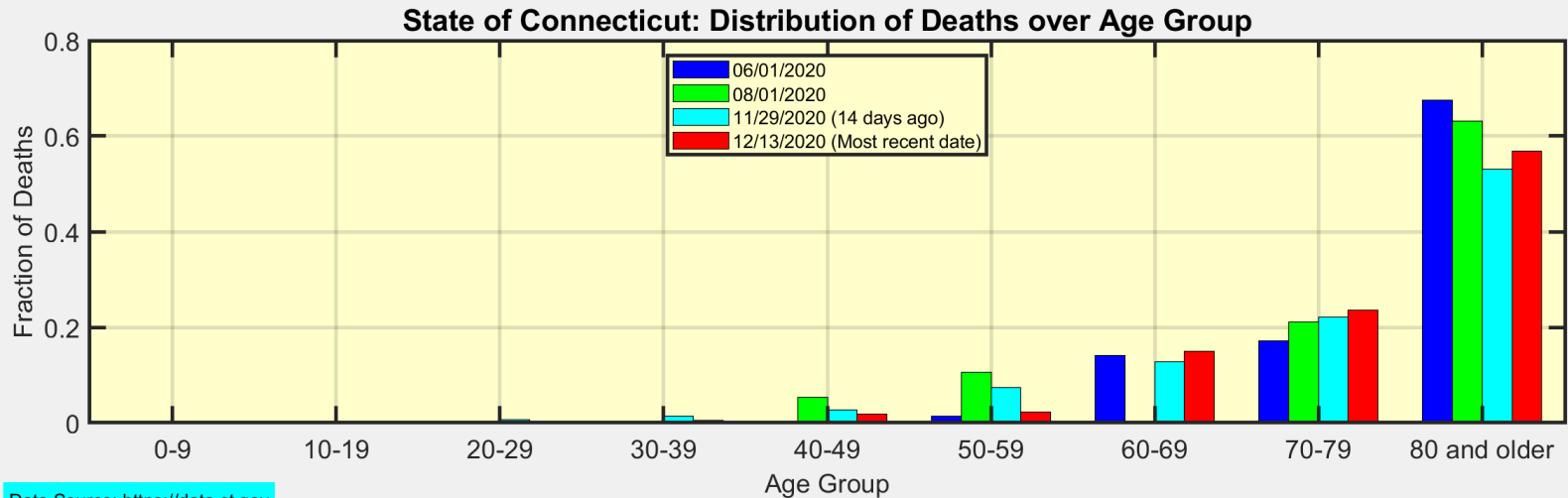
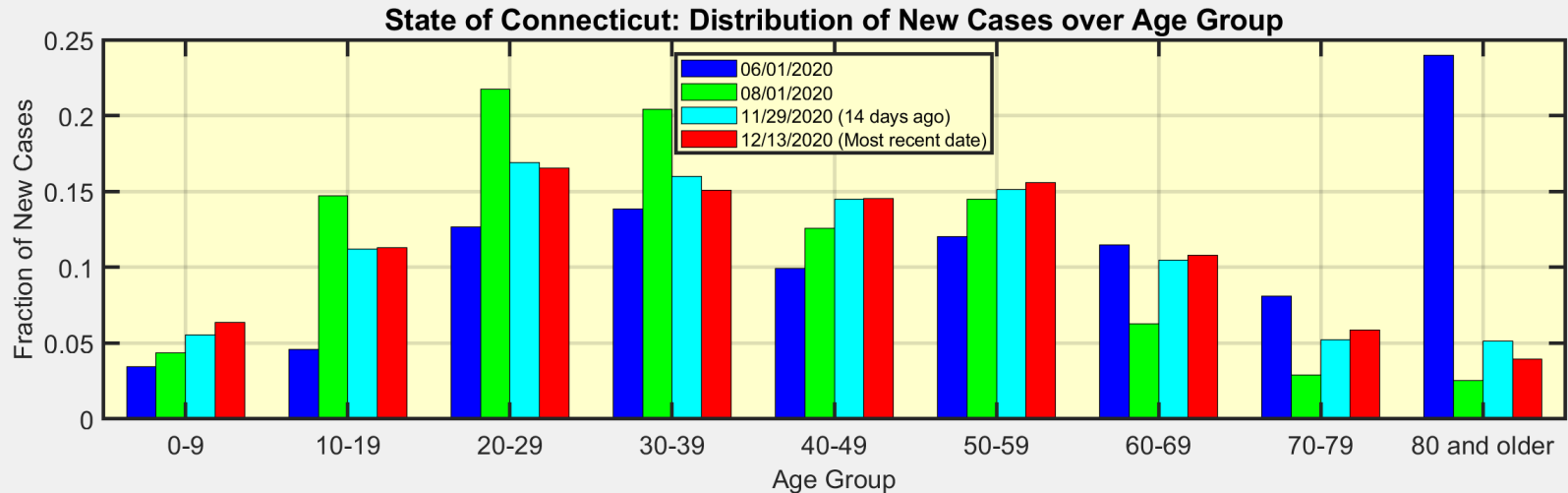
This heat map shows the progression of New Case Rates for all towns in Fairfield County

The magnitude of the New Case Rate is indicated by the color bar at the right. Red indicates the highest values.

New Case Rate (Per 100,000 Residents) for all Towns in Fairfield County



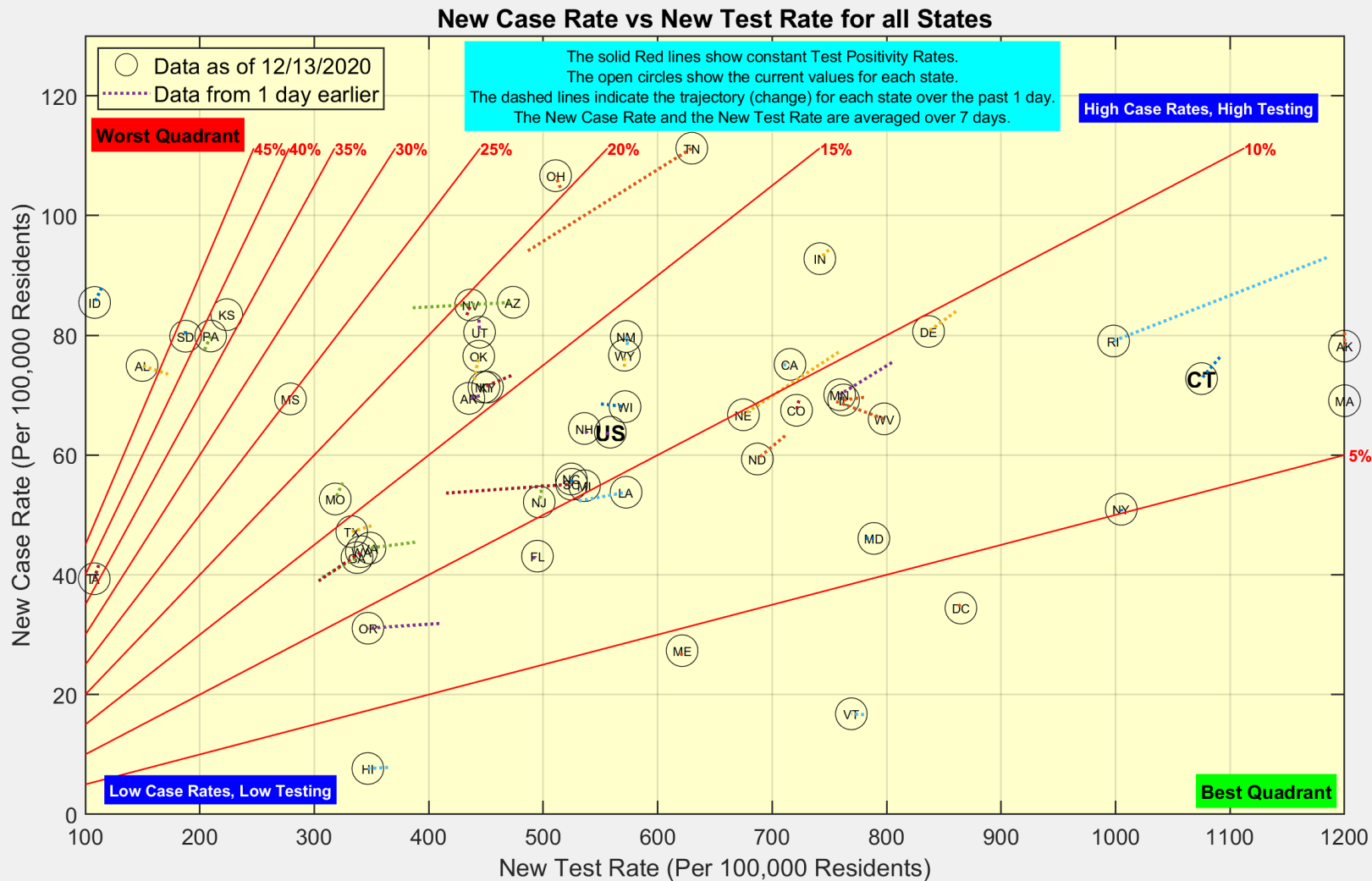
These are the distributions of New Cases and Deaths over age group for the State of Connecticut



Data Source: <https://data.ct.gov>



The Connecticut New Test Rate higher than all other states except AK and MA

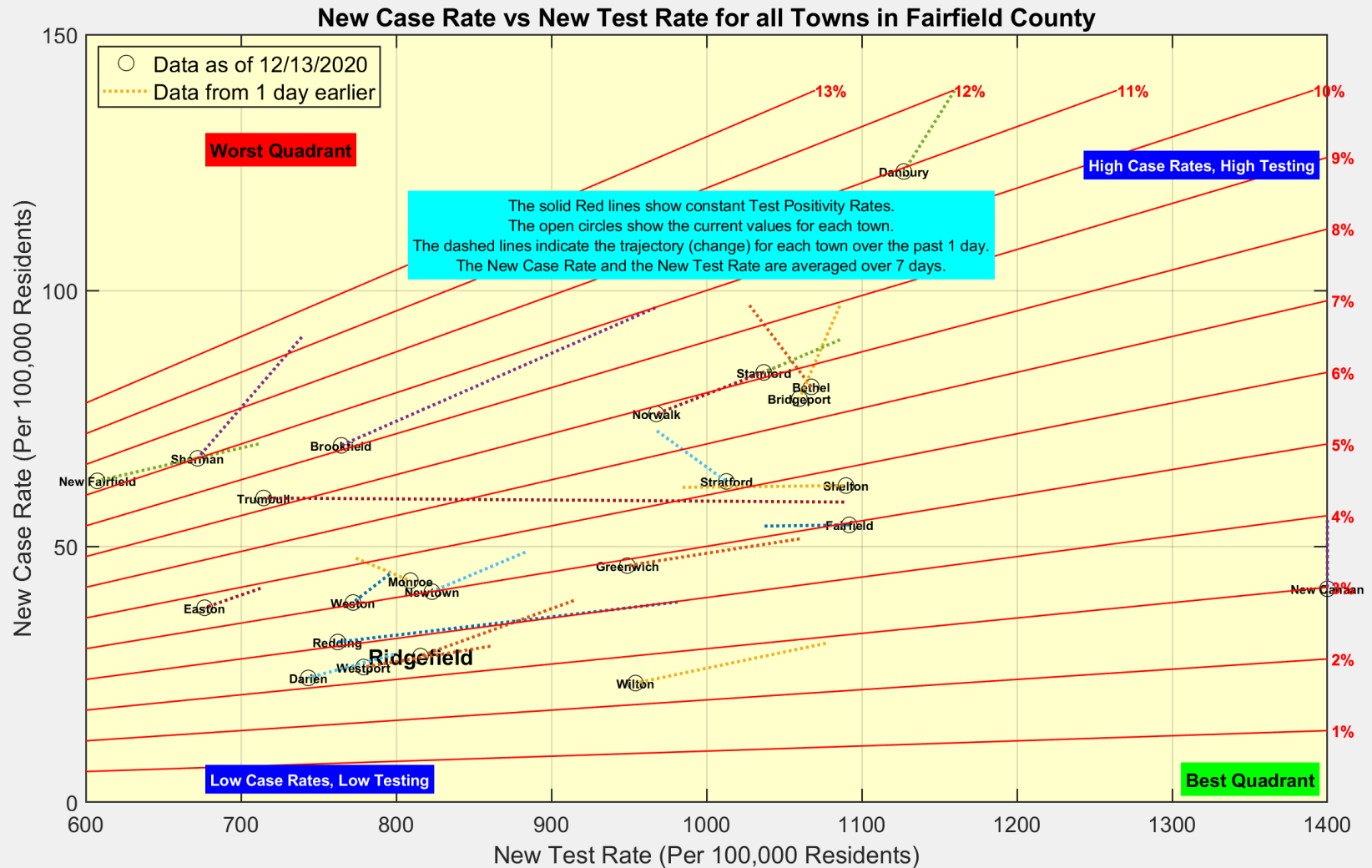


Data Source: <https://covidtracking.com/data/api>



Ridgefield COVID-19 Task Force

New Case Rates dropped across most towns in Fairfield County



Data Source: <https://data.ct.gov>



This is the temporal evolution of Case Rate and Test Rate in Ridgefield since 2 days before Thanksgiving

