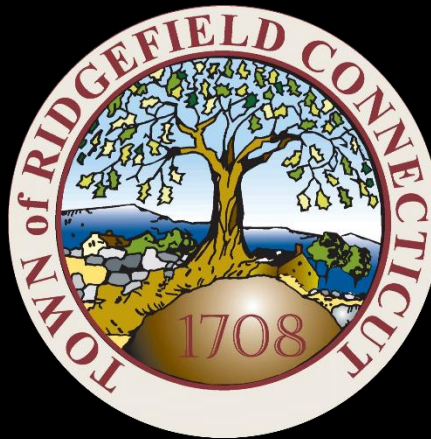


# Ridgefield COVID Report

## Ridgefield COVID-19 Task Force



Data downloaded from  
<https://data.ct.gov/browse?category=Health+and+Human+Services>

Data downloaded as of Friday, December 11, 2020 at 4PM  
This reflects data through Thursday, December 10, 2020

## Ridgefield Summary

Friday, December 11, 2020

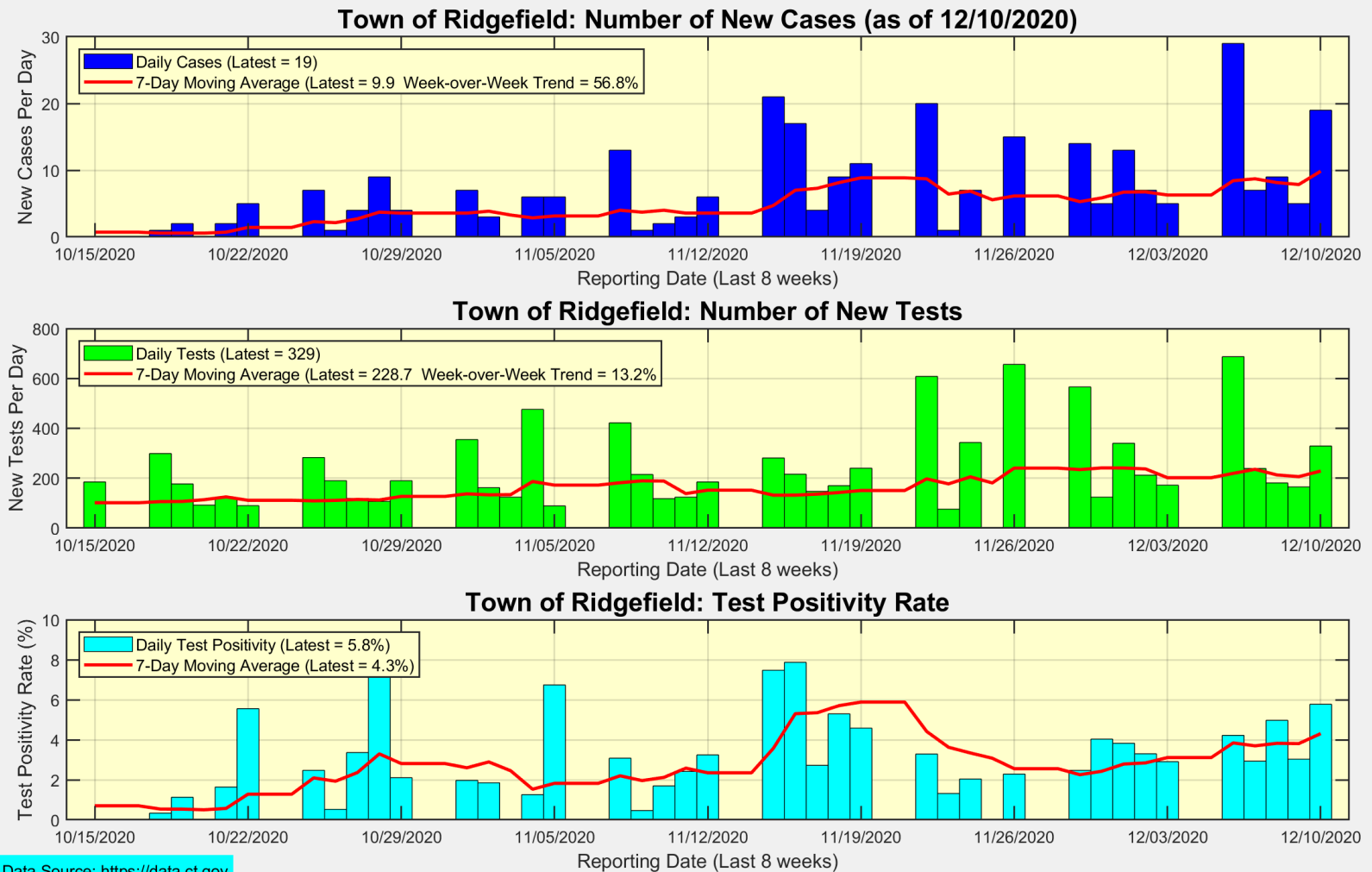
Ridgefield	Todays Report (12/11/2020)	Previous Report (12/10/2020)
Number of Reported Daily New Cases	19	5
New Case Rate (per 100,000 Residents)	<b>39.4</b>	31.4
New Test Rate (per 100,000 Residents)	914.5	824.8
Test Positivity	4.3%	3.8%
Fairfield County	Todays Report (12/11/2020)	Previous Report (12/10/2020)
Number of Reported Daily New Cases	1106	529
New Case Rate (per 100,000 Residents)	76.9	67.3
New Test Rate (per 100,000 Residents)	1062.1	954.0
Test Positivity	7.2%	7.1%
Currently Hospitalized	322	337
The New Case Rate, New Test Rate, and Test Positivity are computed using 7-day moving averages.		

Our data science confirms CDC and other studies:

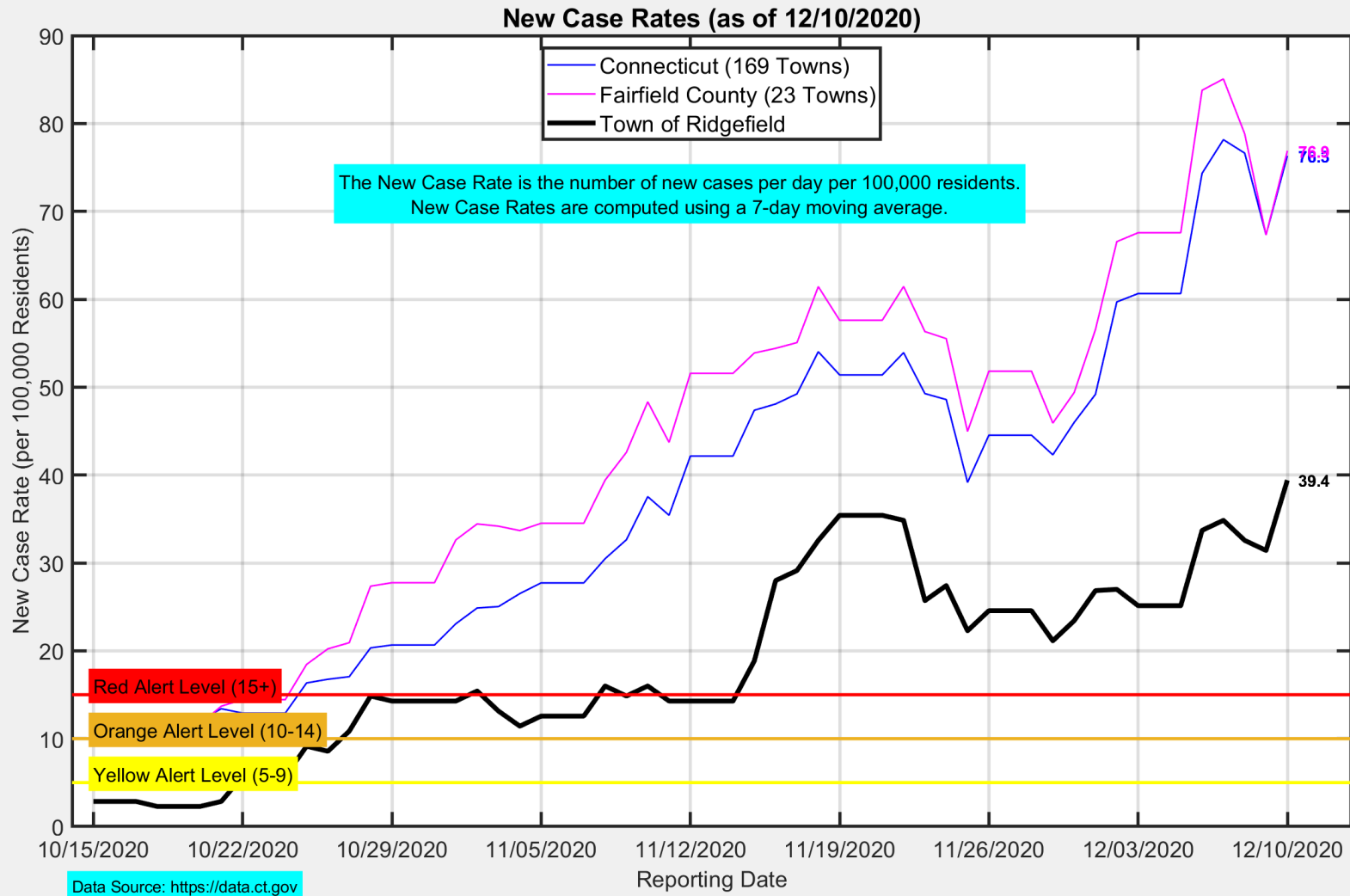
***Wearing a Mask Reduces COVID Case Rates***



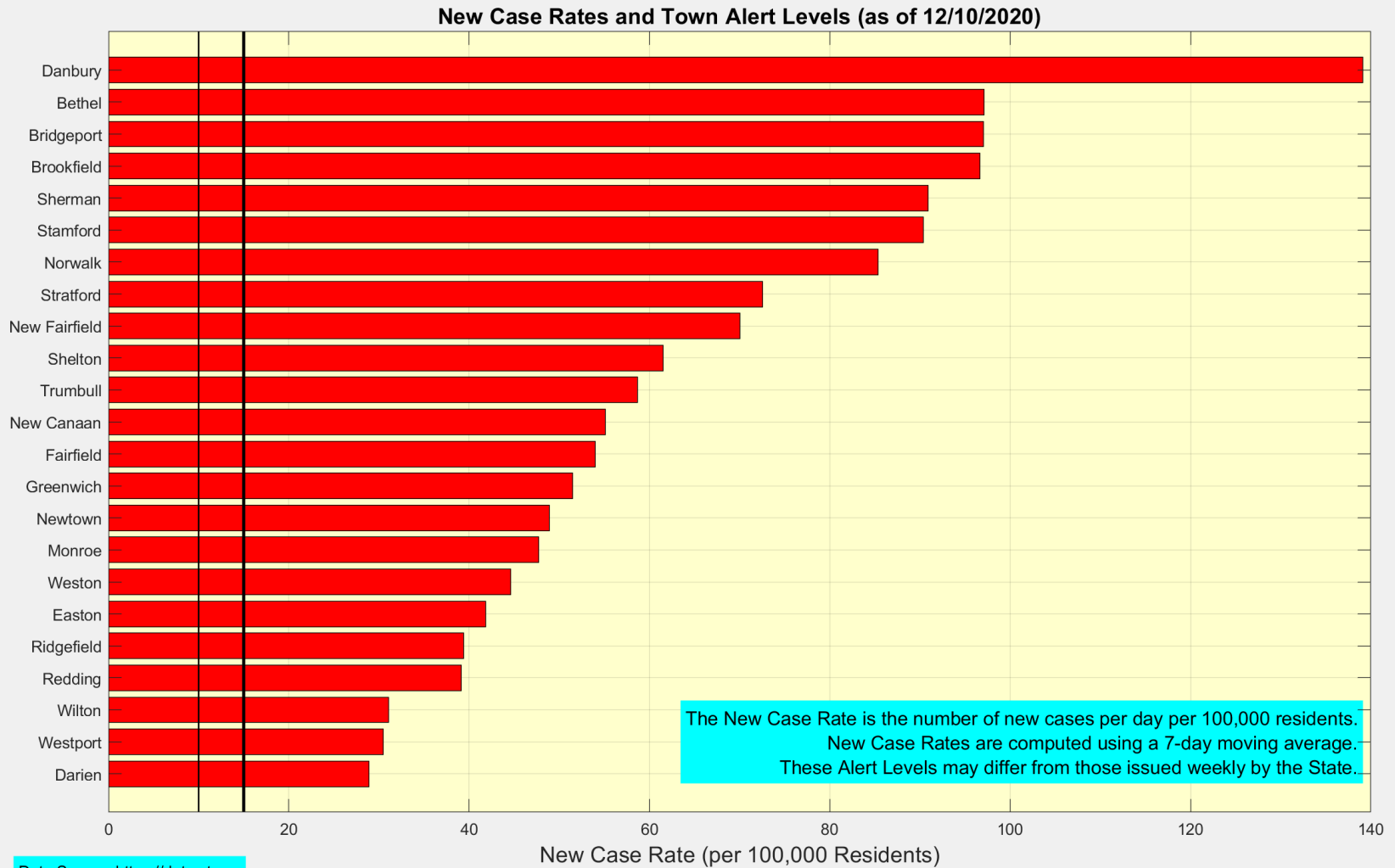
# There were 19 new cases reported in Ridgefield yesterday ... Test Positivity increased to 4.3%



# The New Case Rate in Ridgefield increased to 39.4



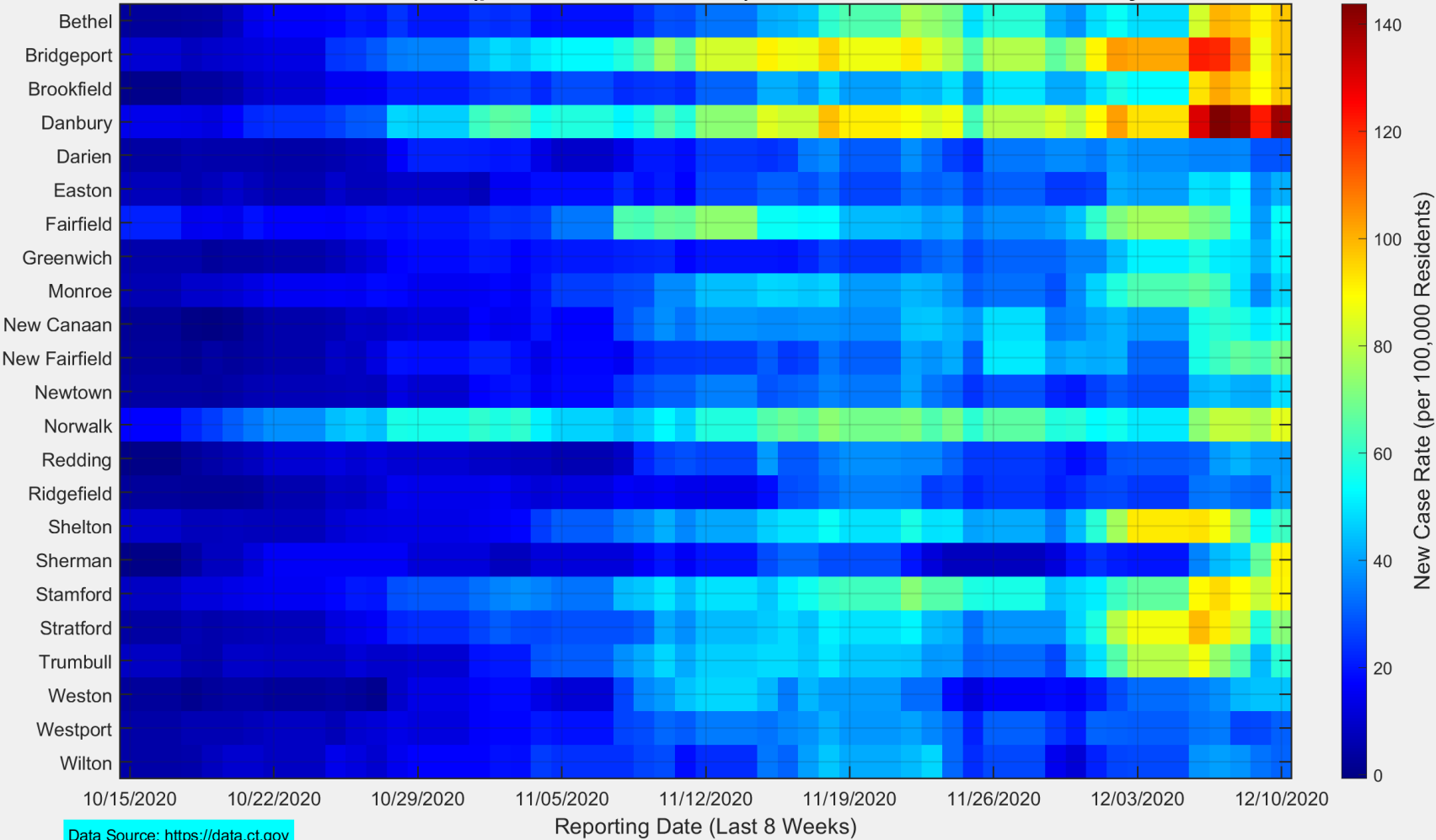
# Ridgefield continues to have one of the lower New Case Rates in Fairfield County



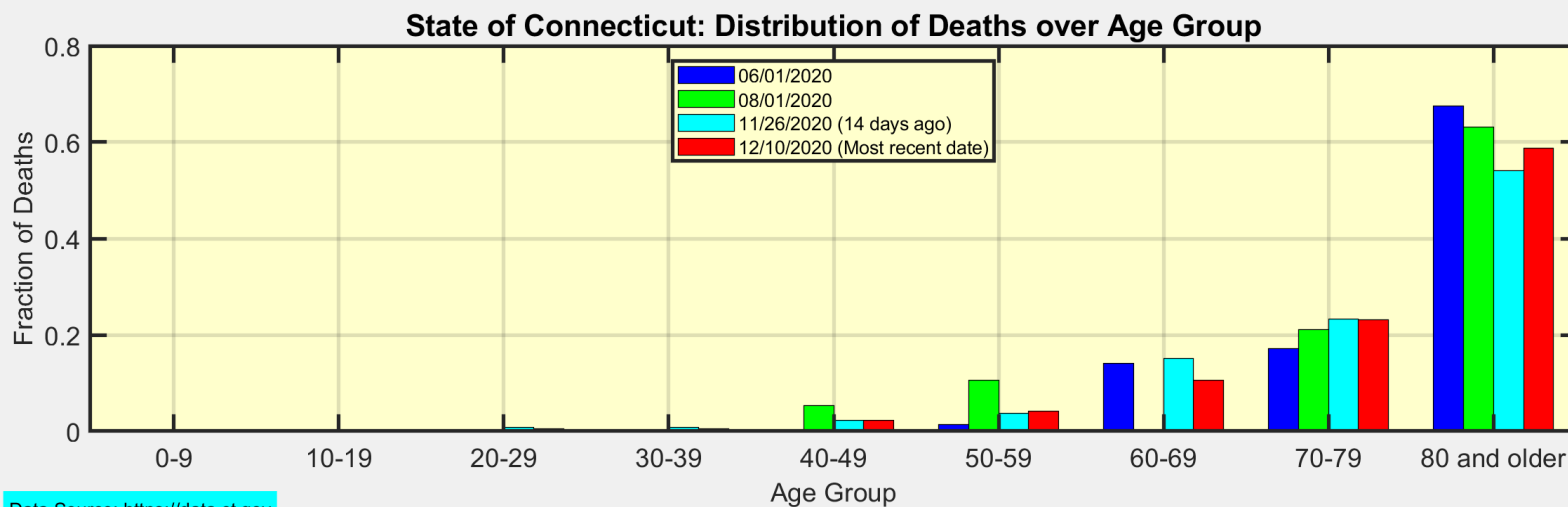
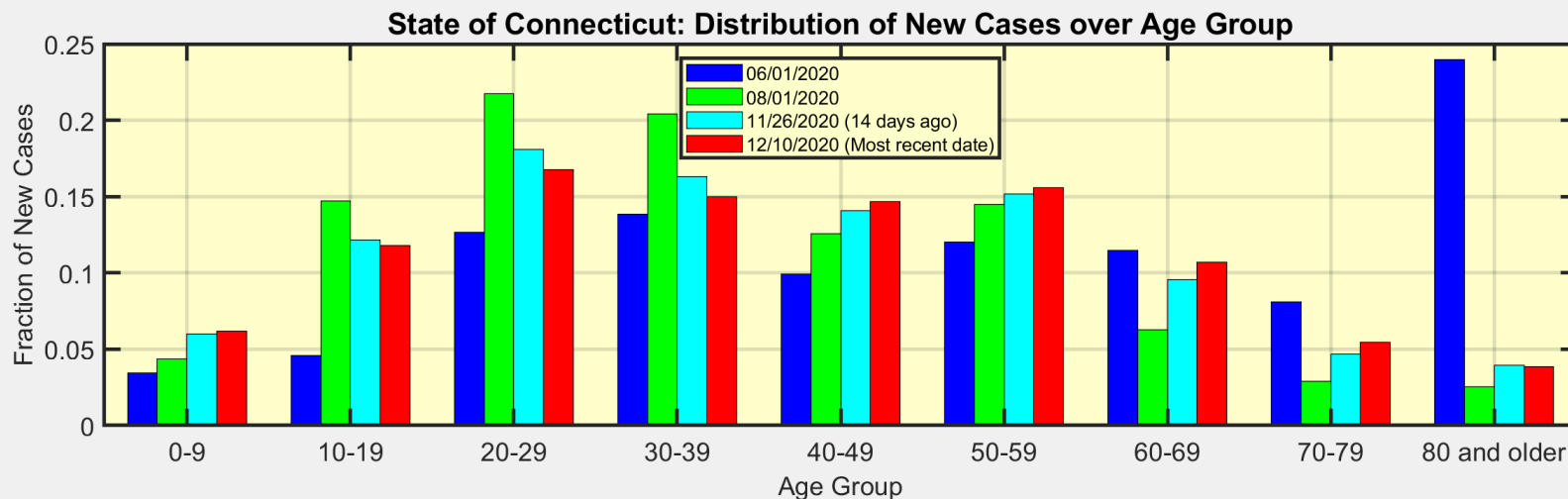
# This heat map shows the progression of New Case Rates for all towns in Fairfield County

The magnitude of the New Case Rate is indicated by the color bar at the right. Red indicates the highest Case Rates.

New Case Rates (per 100,000 Residents) for all Towns in Fairfield County



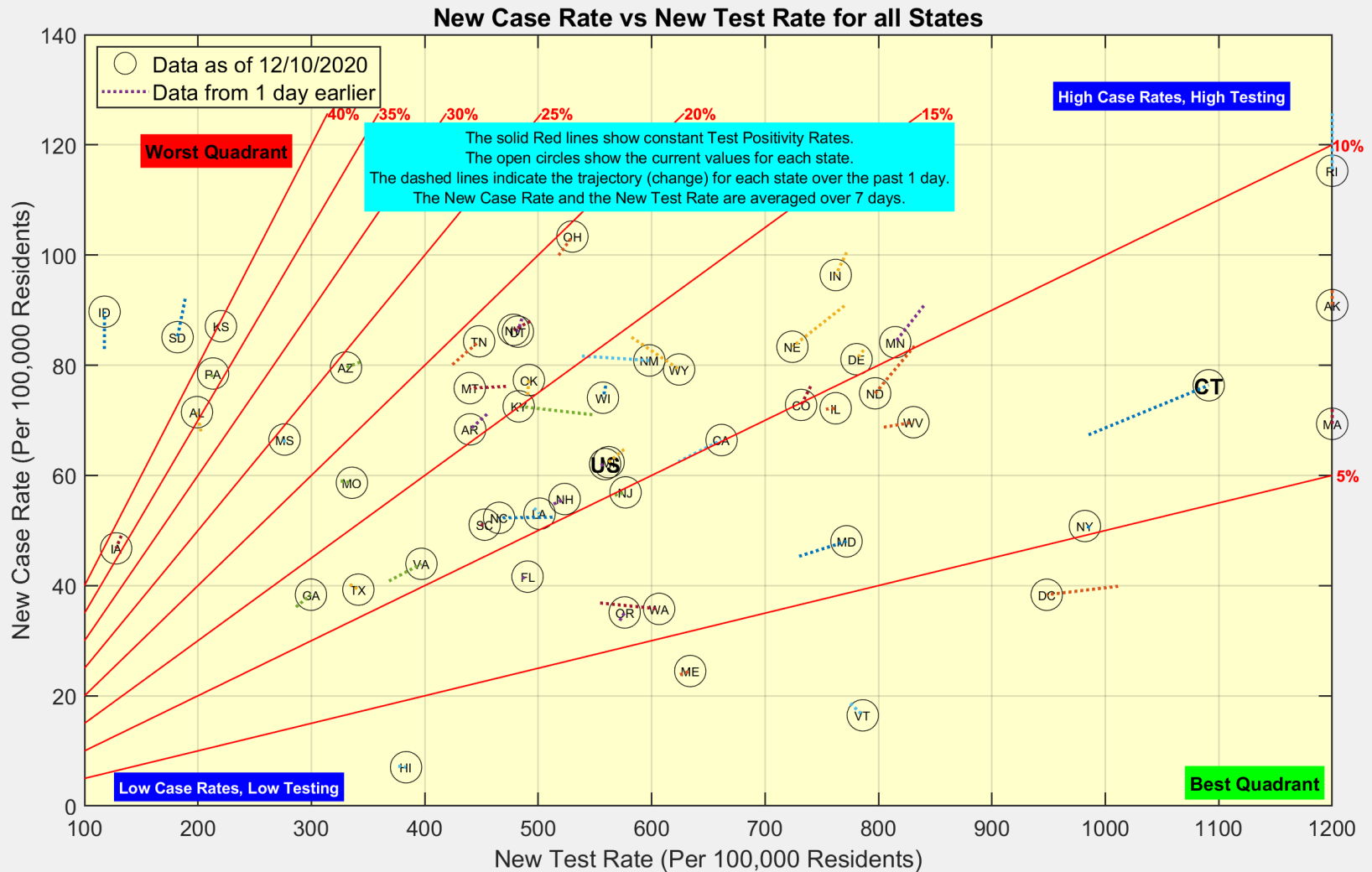
# These are the distributions of New Cases and Deaths over age group for the State of Connecticut



Data Source: <https://data.ct.gov>



# Connecticut testing increased, with Test Positivity increasing very slightly

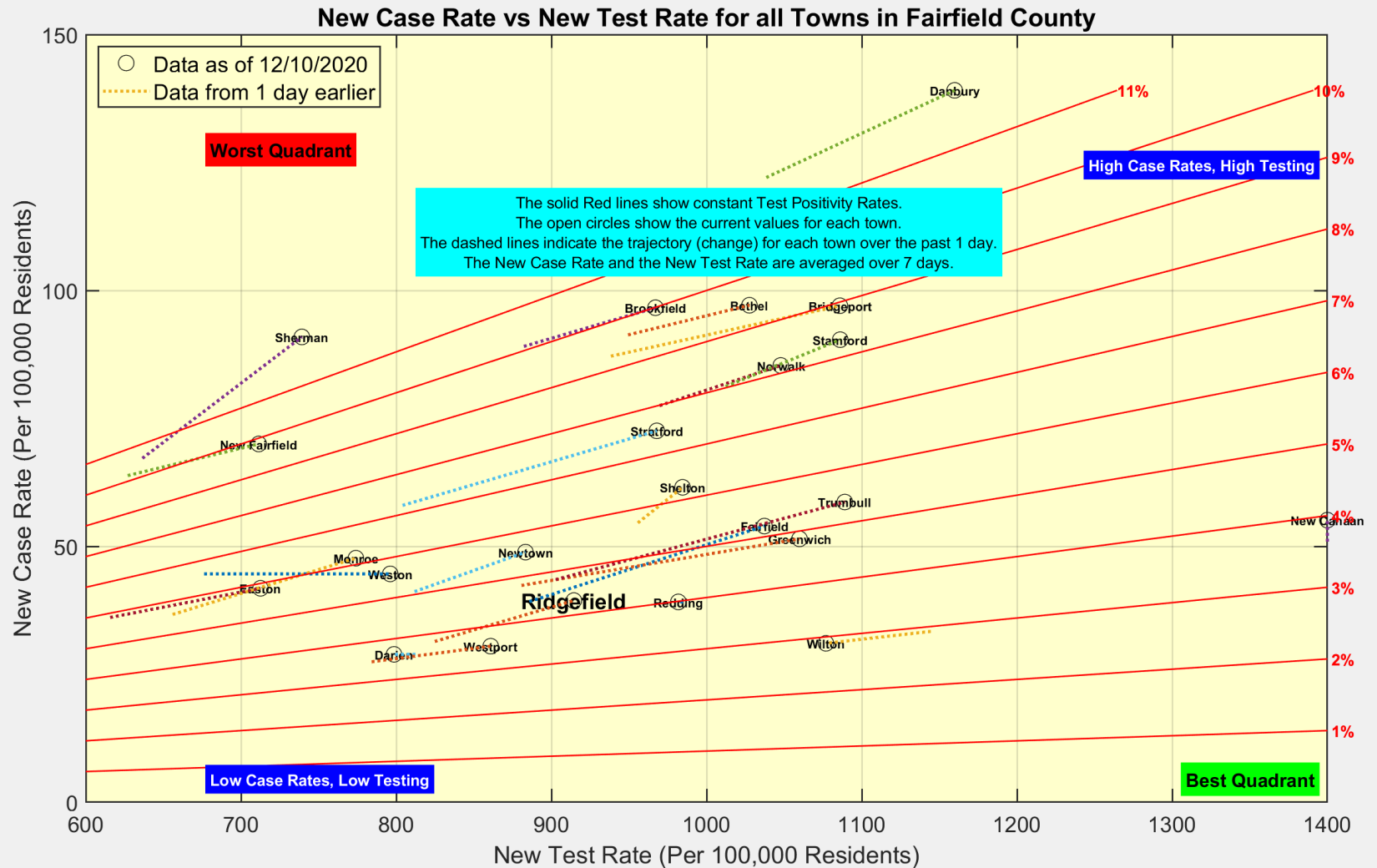


Data Source: <https://covidtracking.com/data/api>



Ridgefield COVID-19 Task Force

# Testing increased in most Towns with Test Positivity stable (or increasing)



Data Source: <https://data.ct.gov>



**Ridgefield COVID-19 Task Force**