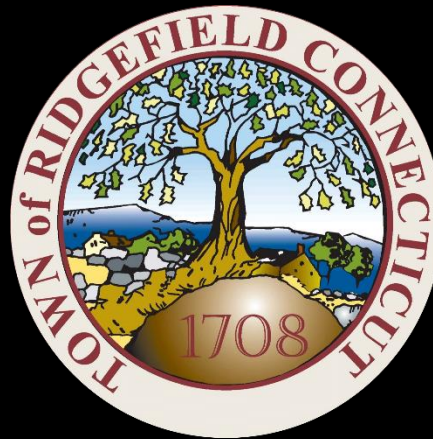


Ridgefield COVID Report

Ridgefield COVID-19 Task Force



Data downloaded from
<https://data.ct.gov/browse?category=Health+and+Human+Services>

Data downloaded as Thursday, December 10, 2020 at 4PM
This reflects data through Wednesday, December 9, 2020

Ridgefield Summary

Thursday, December 10, 2020

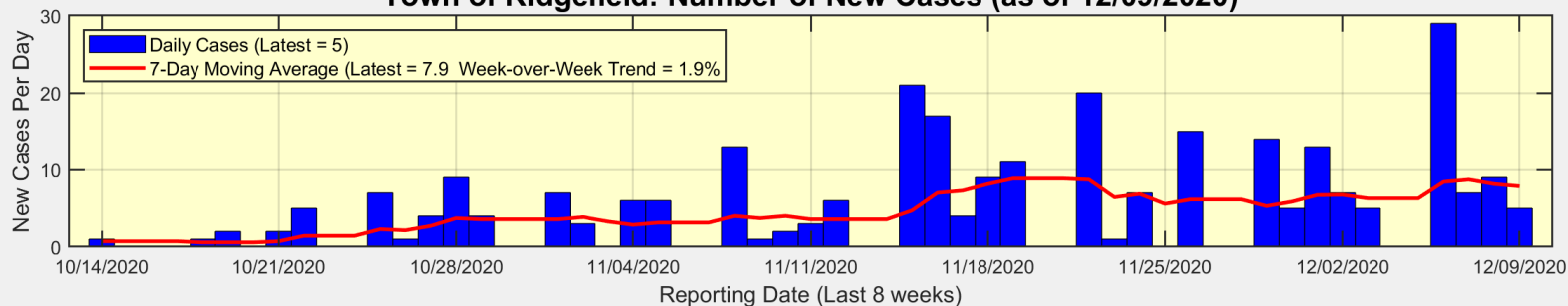
Ridgefield	Todays Report (12/10/2020)	Previous Report (12/09/2020)
Number of Reported Daily New Cases	5	9
New Case Rate (per 100,000 Residents)	31.4	32.6
New Test Rate (per 100,000 Residents)	824.8	851.6
Test Positivity	3.8%	3.8%
Fairfield County	Todays Report (12/10/2020)	Previous Report (12/09/2020)
Number of Reported Daily New Cases	529	604
New Case Rate (per 100,000 Residents)	67.3	78.8
New Test Rate (per 100,000 Residents)	954	1083.2
Test Positivity	7.1%	7.3%
Currently Hospitalized	337	365
The New Case Rate, New Test Rate, and Test Positivity are computed using 7-day moving averages.		

Our data science confirms CDC and other studies:
Wearing a Mask Reduces COVID Case Rates

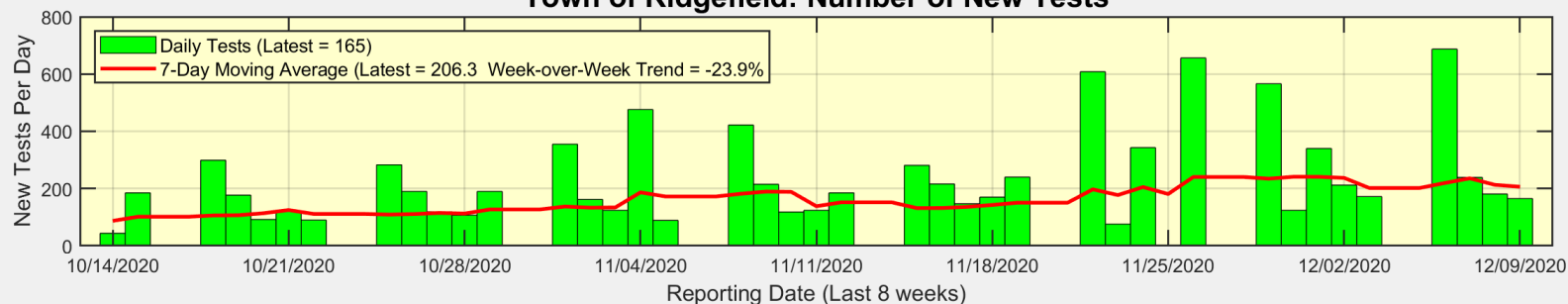


There were 5 new cases reported in Ridgefield yesterday

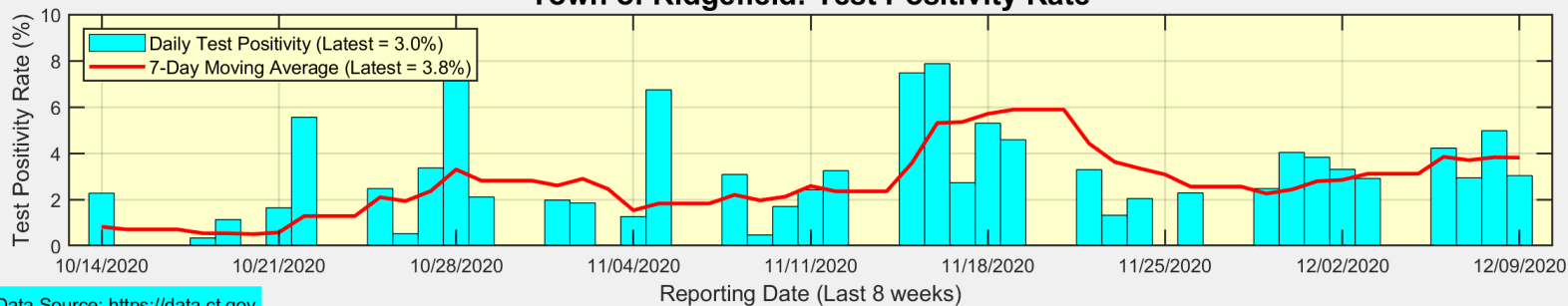
Town of Ridgefield: Number of New Cases (as of 12/09/2020)



Town of Ridgefield: Number of New Tests



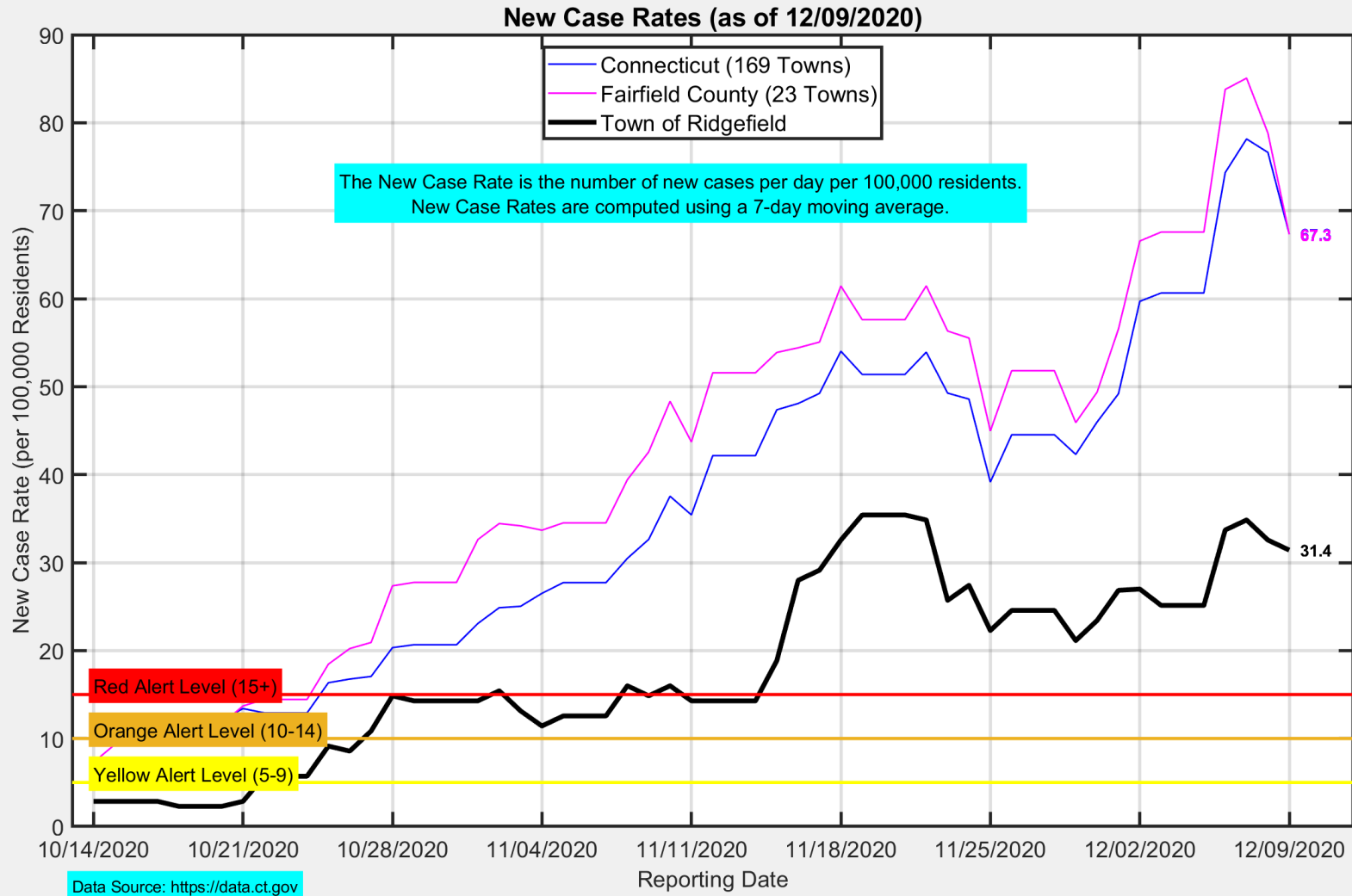
Town of Ridgefield: Test Positivity Rate



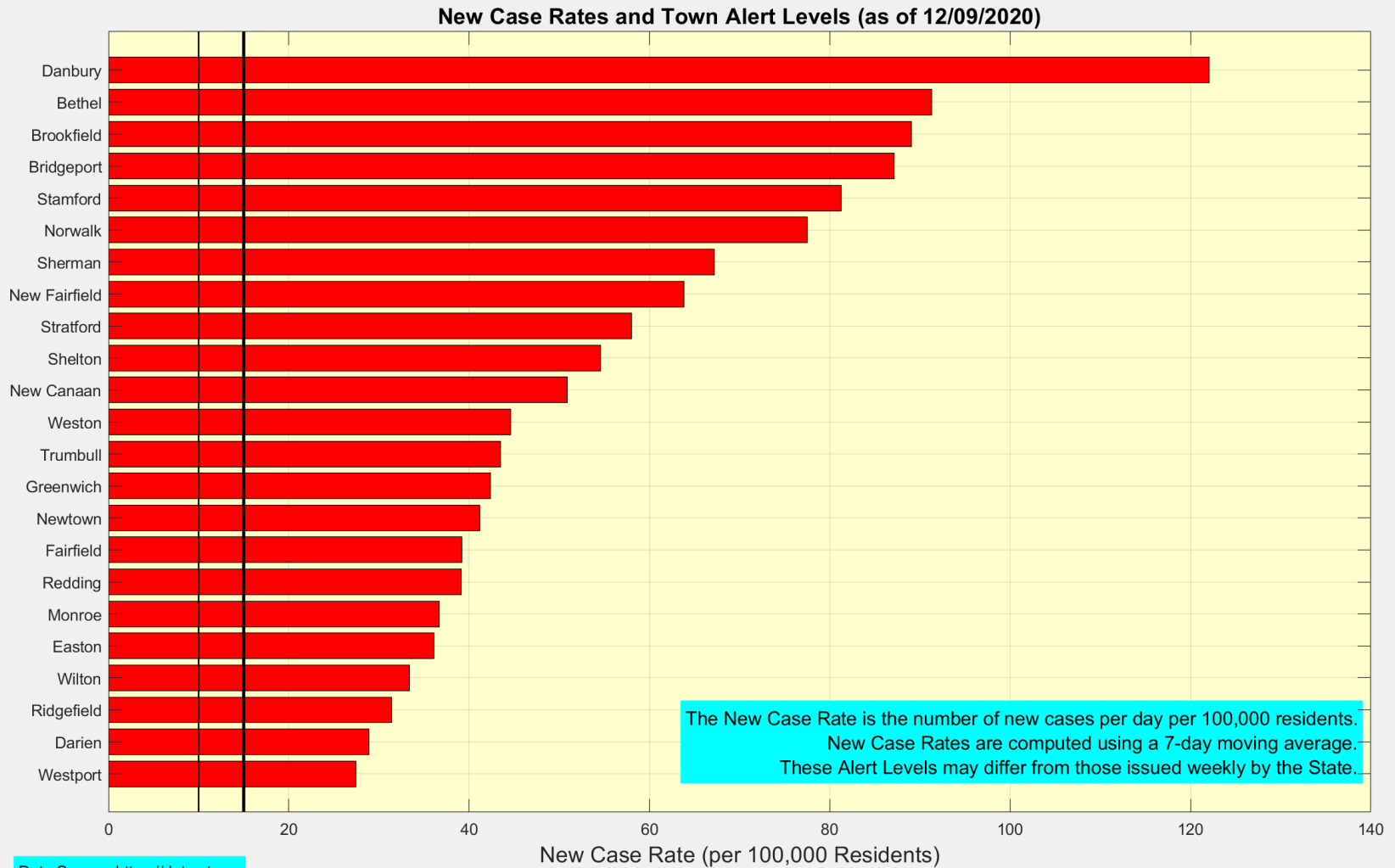
Data Source: <https://data.ct.gov>



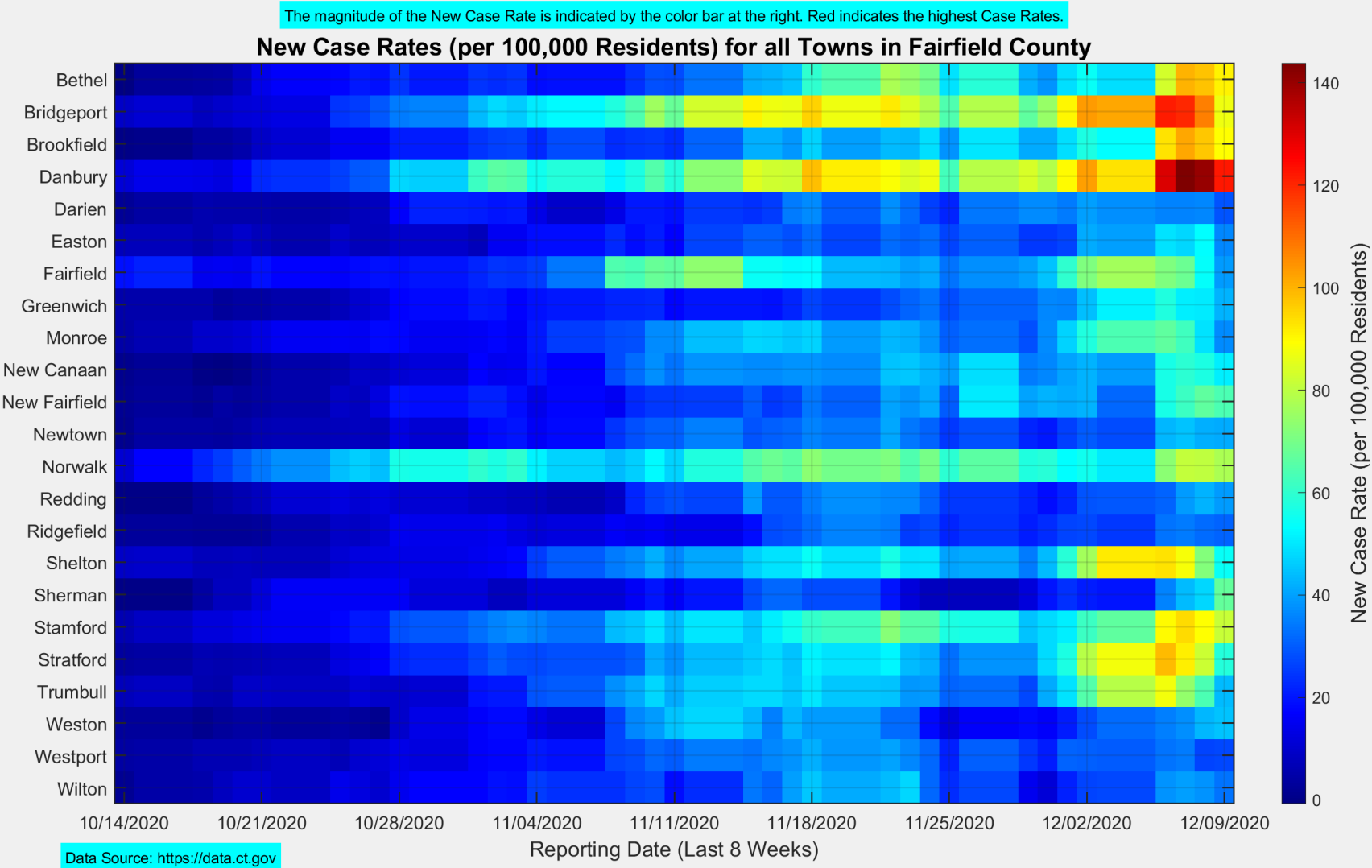
The New Case Rate in Ridgefield remained stable at 31.4



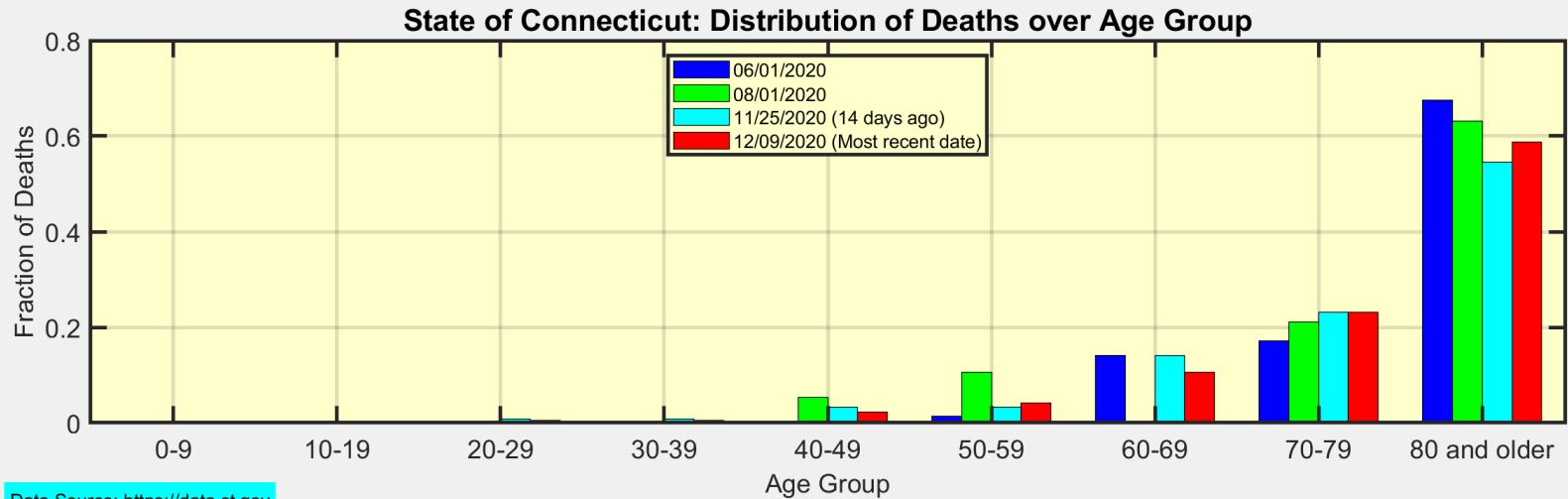
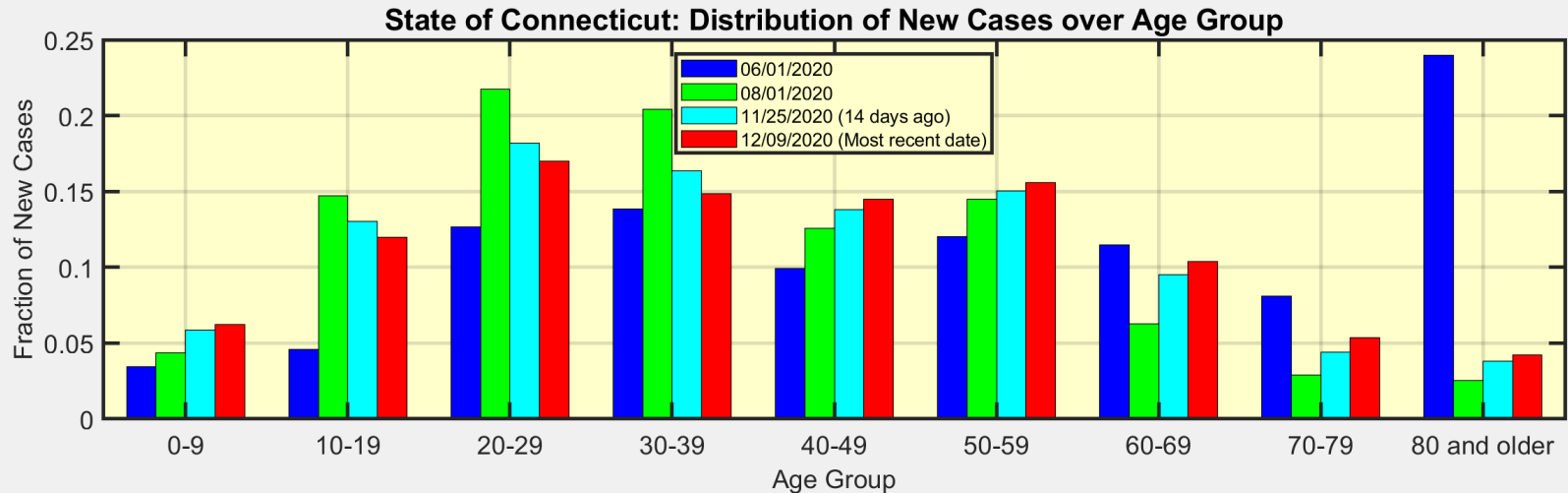
Ridgefield continues to have one of the lower New Case Rates in Fairfield County



This heat map shows the progression of New Case Rates for all towns in Fairfield County



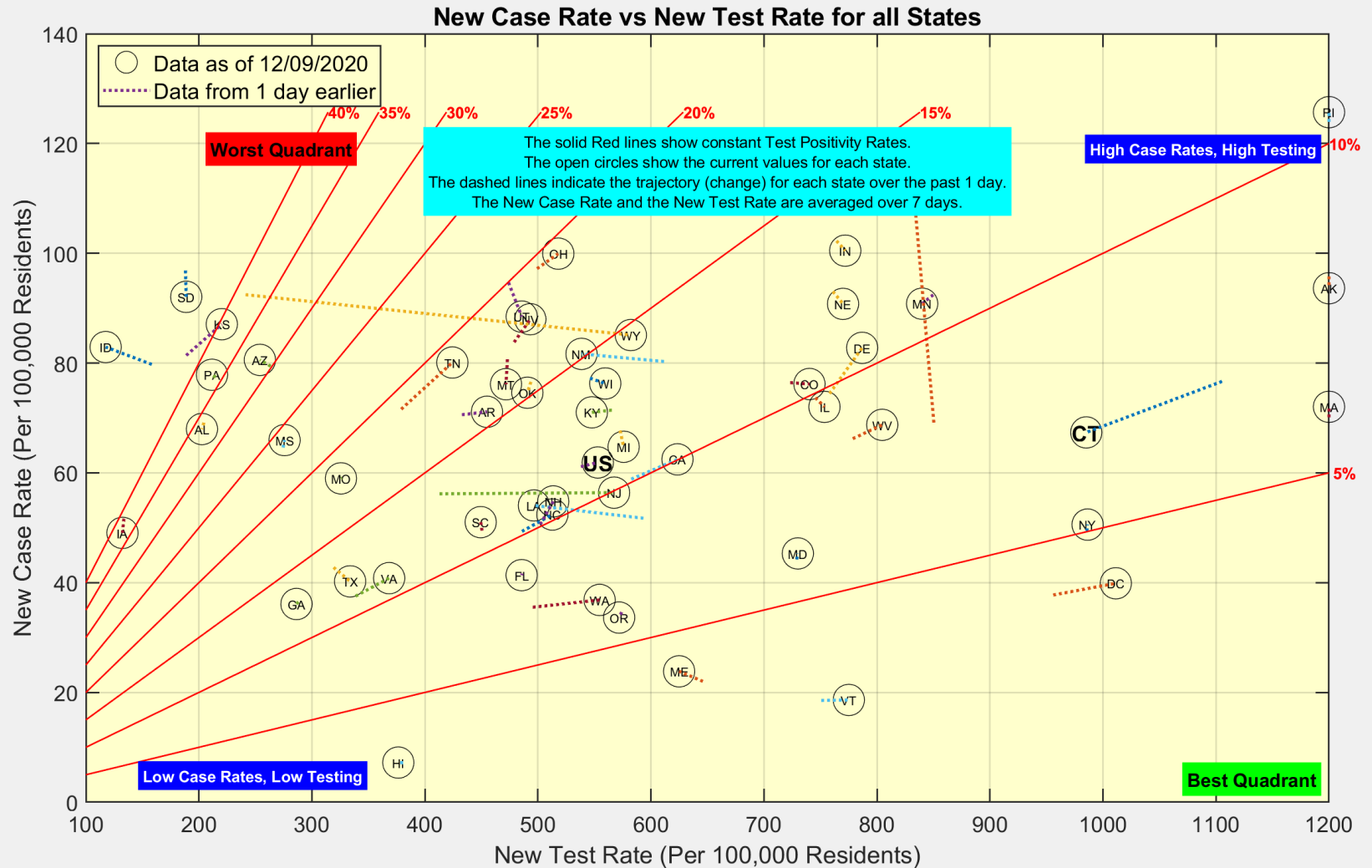
These are the distributions of New Cases and Deaths over age group for the State of Connecticut



Data Source: <https://data.ct.gov>



Connecticut testing decreased, with Test Positivity remaining constant

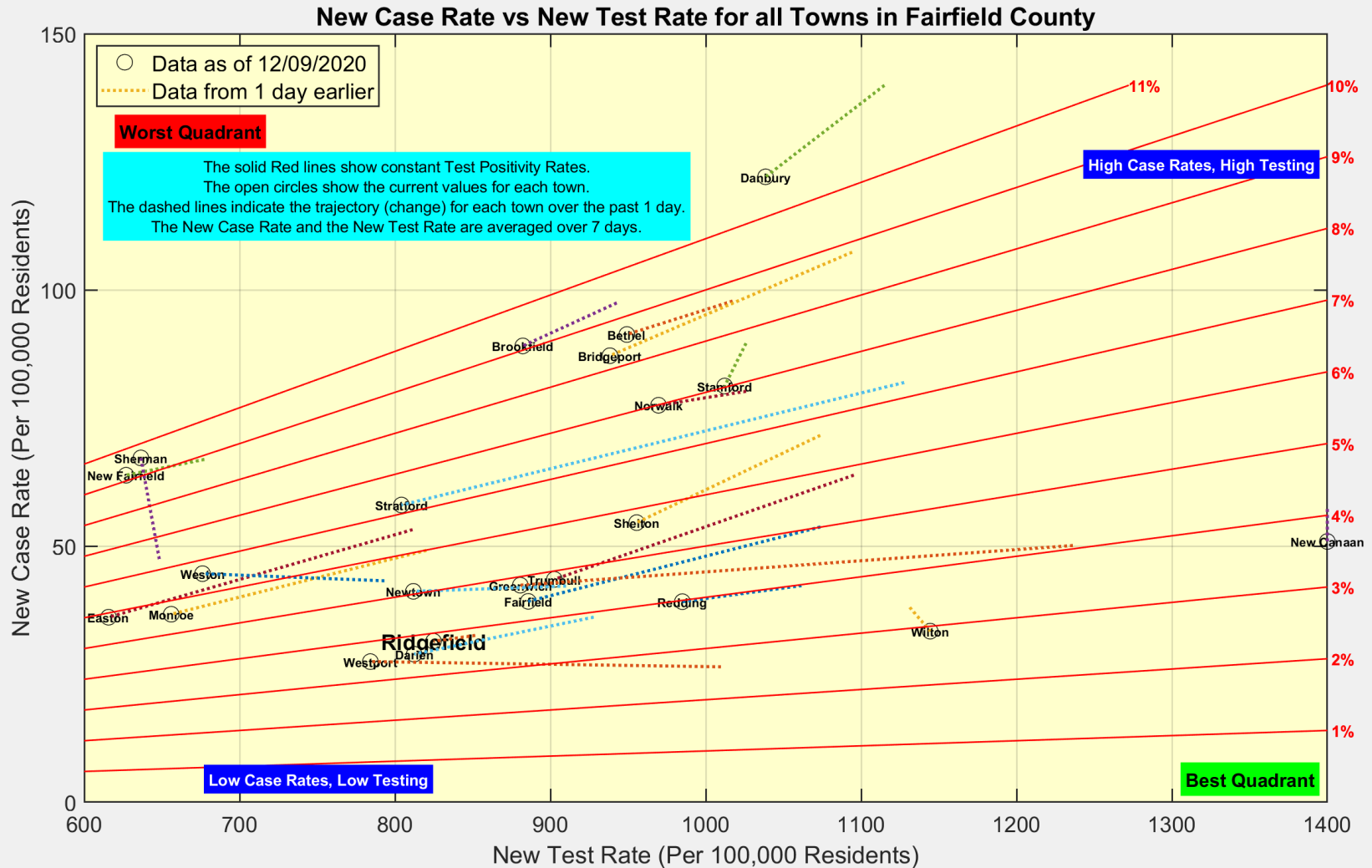


Data Source: <https://covidtracking.com/data/api>



Ridgefield COVID-19 Task Force

Testing decreased in most Towns, with Test Positivity remaining stable (or decreasing)



Data Source: <https://data.ct.gov>



Ridgefield COVID-19 Task Force