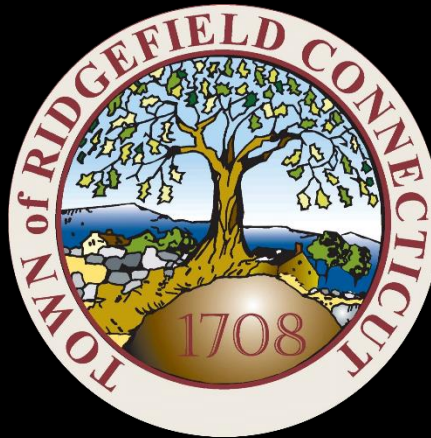


Ridgefield COVID Report

Ridgefield COVID-19 Task Force



Data downloaded from
<https://data.ct.gov/browse?category=Health+and+Human+Services>

Data downloaded on Wednesday, January 20, 2021 at 4:00 PM
This reflects data through Tuesday, January 19, 2021

Ridgefield Summary

Data downloaded on Wednesday, 01/20/2021 at 4:00 PM

Ridgefield	Tuesday 01/19/2021	Monday 01/18/2021
Number of New Cases Reported	11	8
New Case Rate (per 100,000 Residents)	26.3	38.3
New Test Rate (per 100,000 Residents)	1238.5	1339.6
Test Positivity	2.1%	2.9%
Fairfield County	Tuesday 01/19/2021	Monday 01/18/2021
Number of New Cases Reported	462	536
New Case Rate (per 100,000 Residents)	46.6	53.7
New Test Rate (per 100,000 Residents)	1490.6	1585.6
Test Positivity	3.1%	3.4%
Currently Hospitalized	279	283

Data Source: <https://data.ct.gov>. This report reflects data reported to the State through Tuesday 01/19/2021. The New Case Rate, New Test Rate, and Test Positivity are computed using 7-day moving averages.

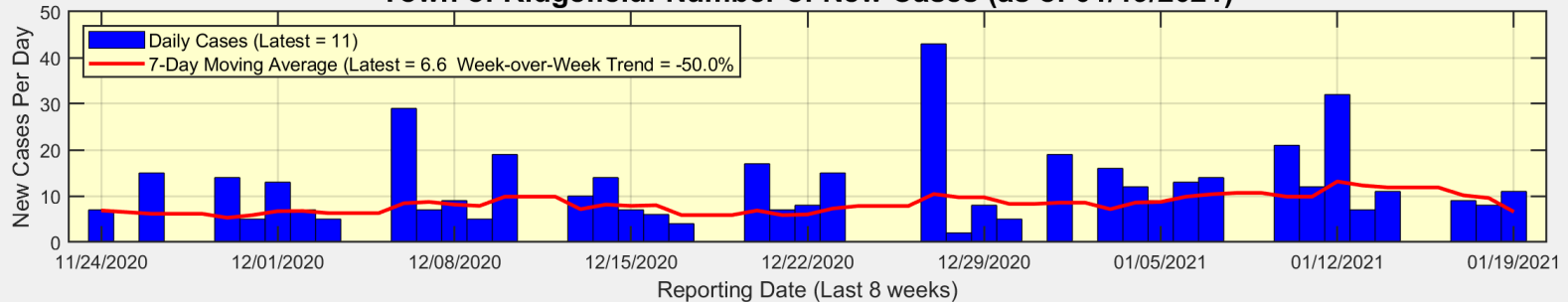
Our data science confirms CDC and other studies:

Wearing a Mask Reduces COVID Case Rates

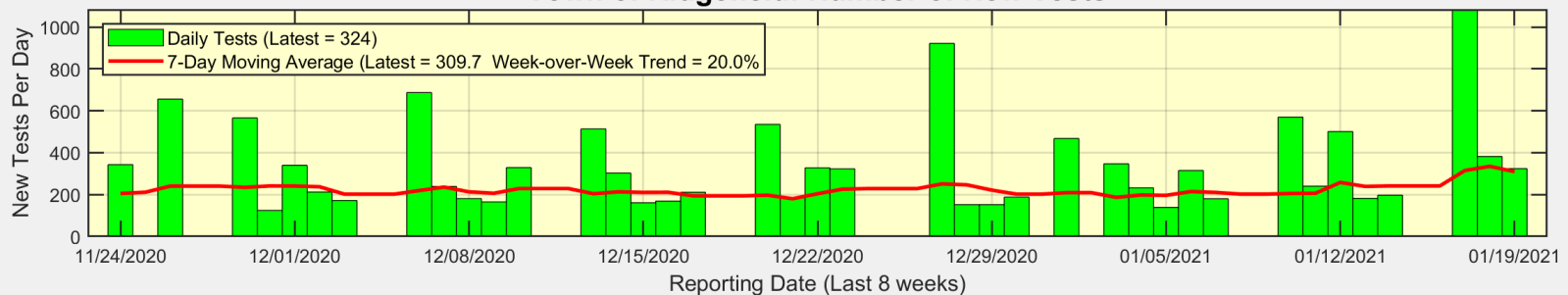


There were 11 new cases reported for Ridgefield on Tuesday

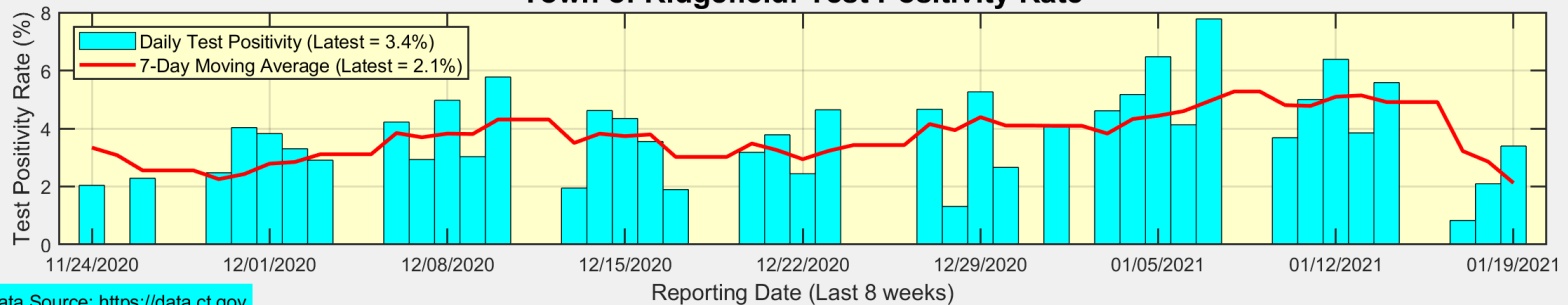
Town of Ridgefield: Number of New Cases (as of 01/19/2021)



Town of Ridgefield: Number of New Tests



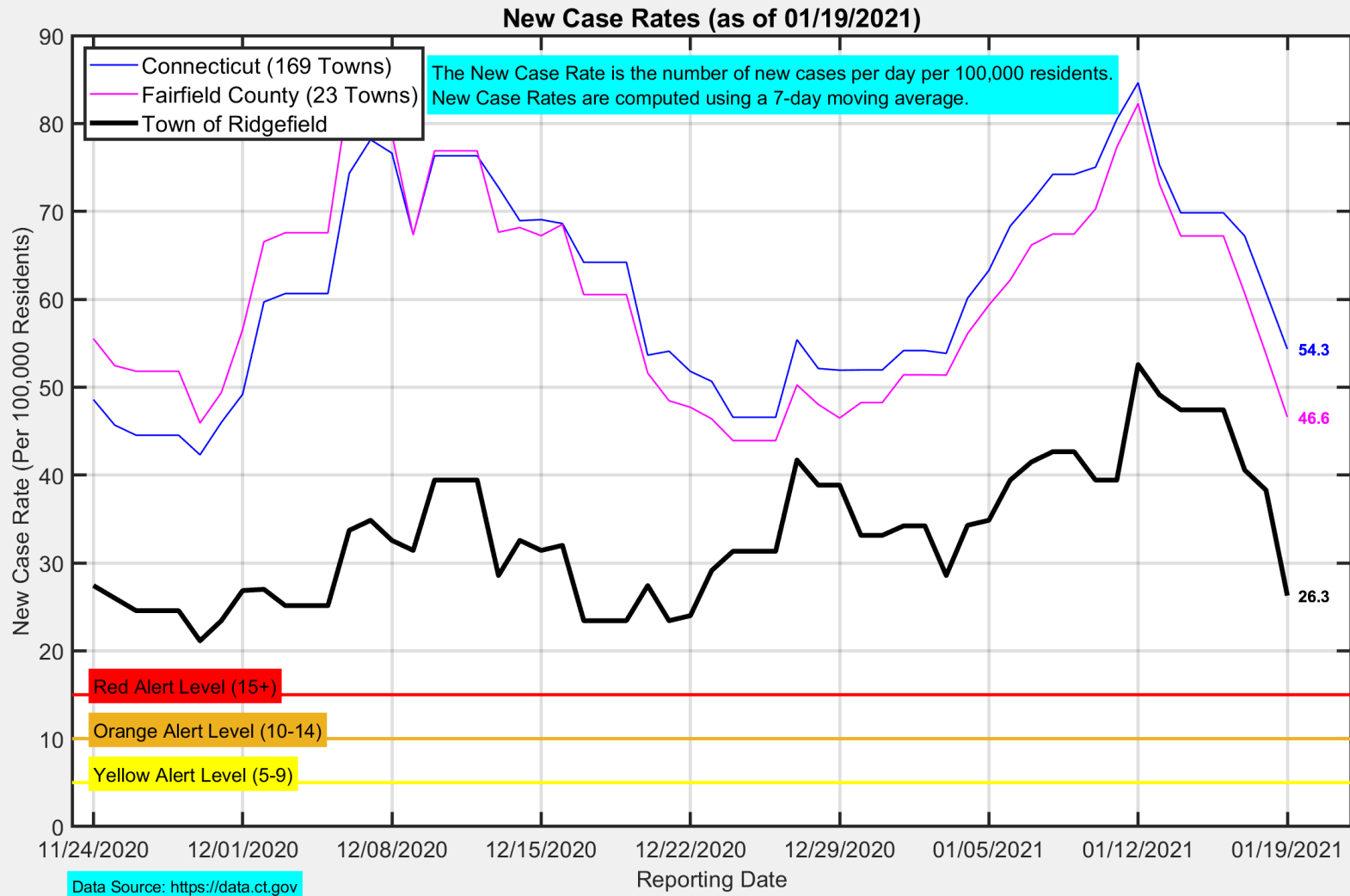
Town of Ridgefield: Test Positivity Rate



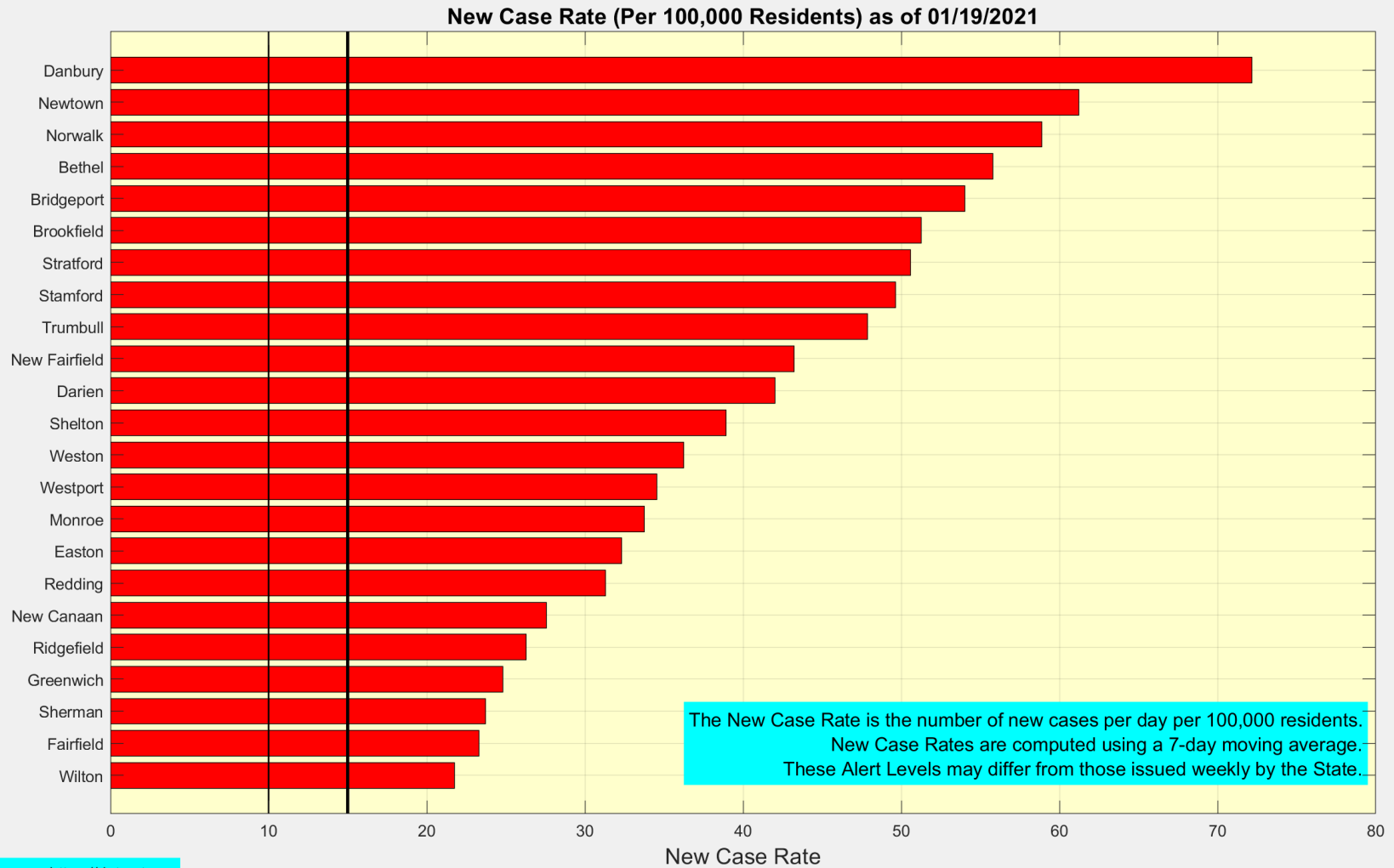
Data Source: <https://data.ct.gov>



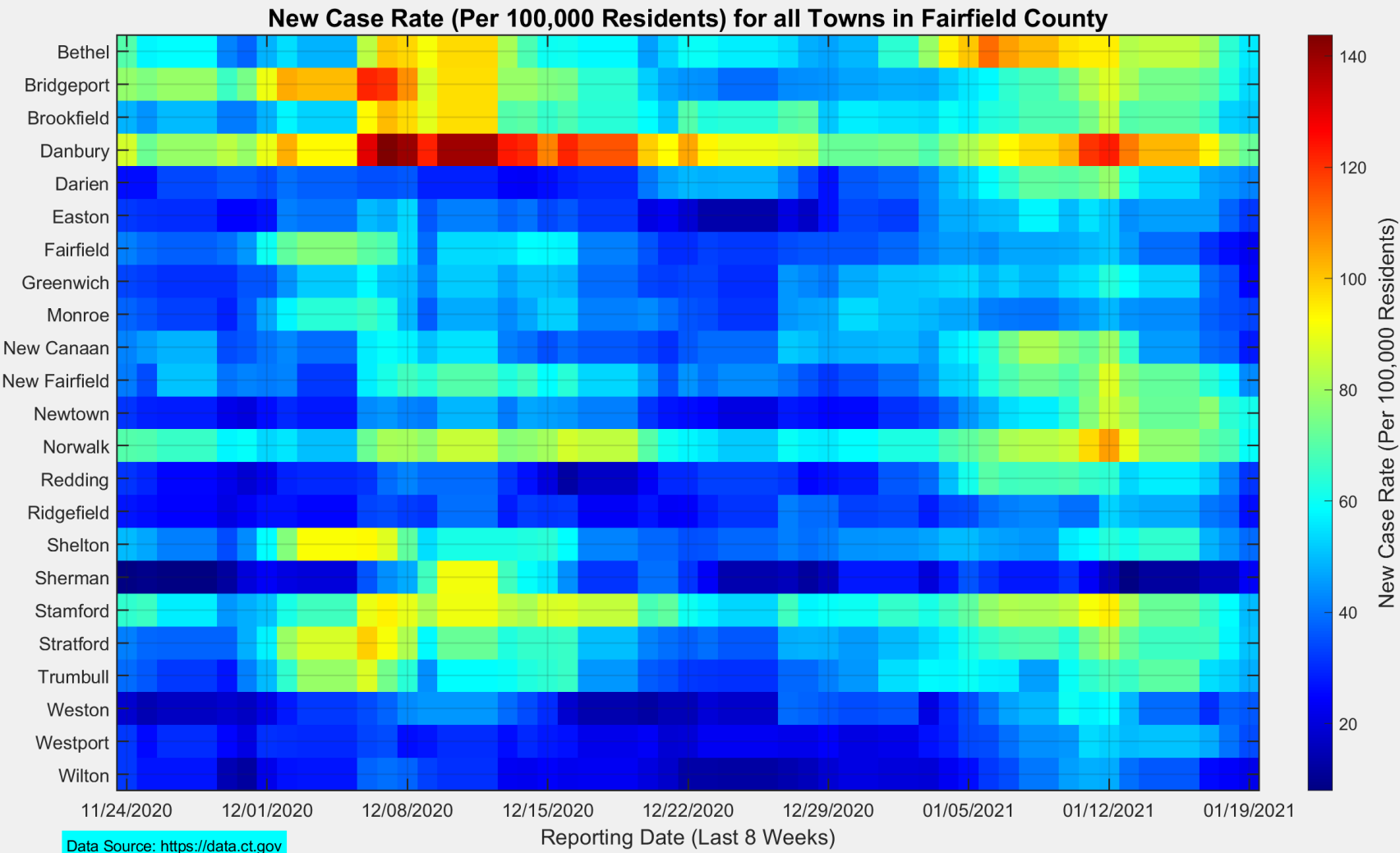
The New Case Rate in Ridgefield decreased to 26.3



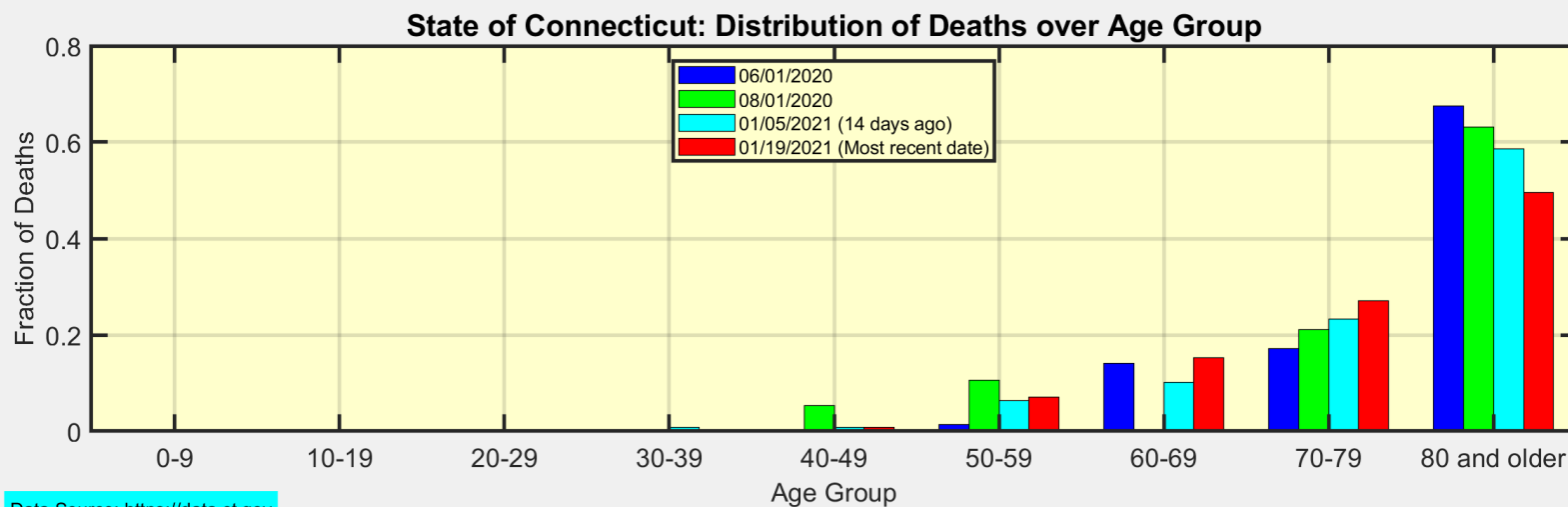
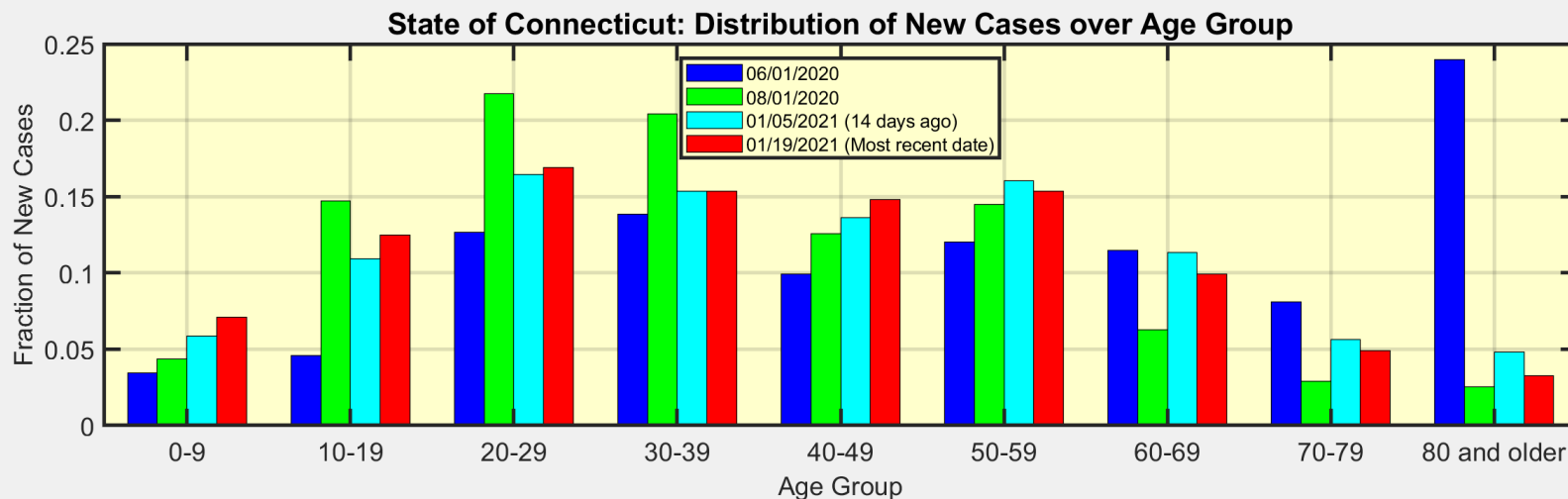
Here are the latest New Case Rates for all towns in Fairfield County



This heat map shows the progression of New Case Rates for all towns in Fairfield County



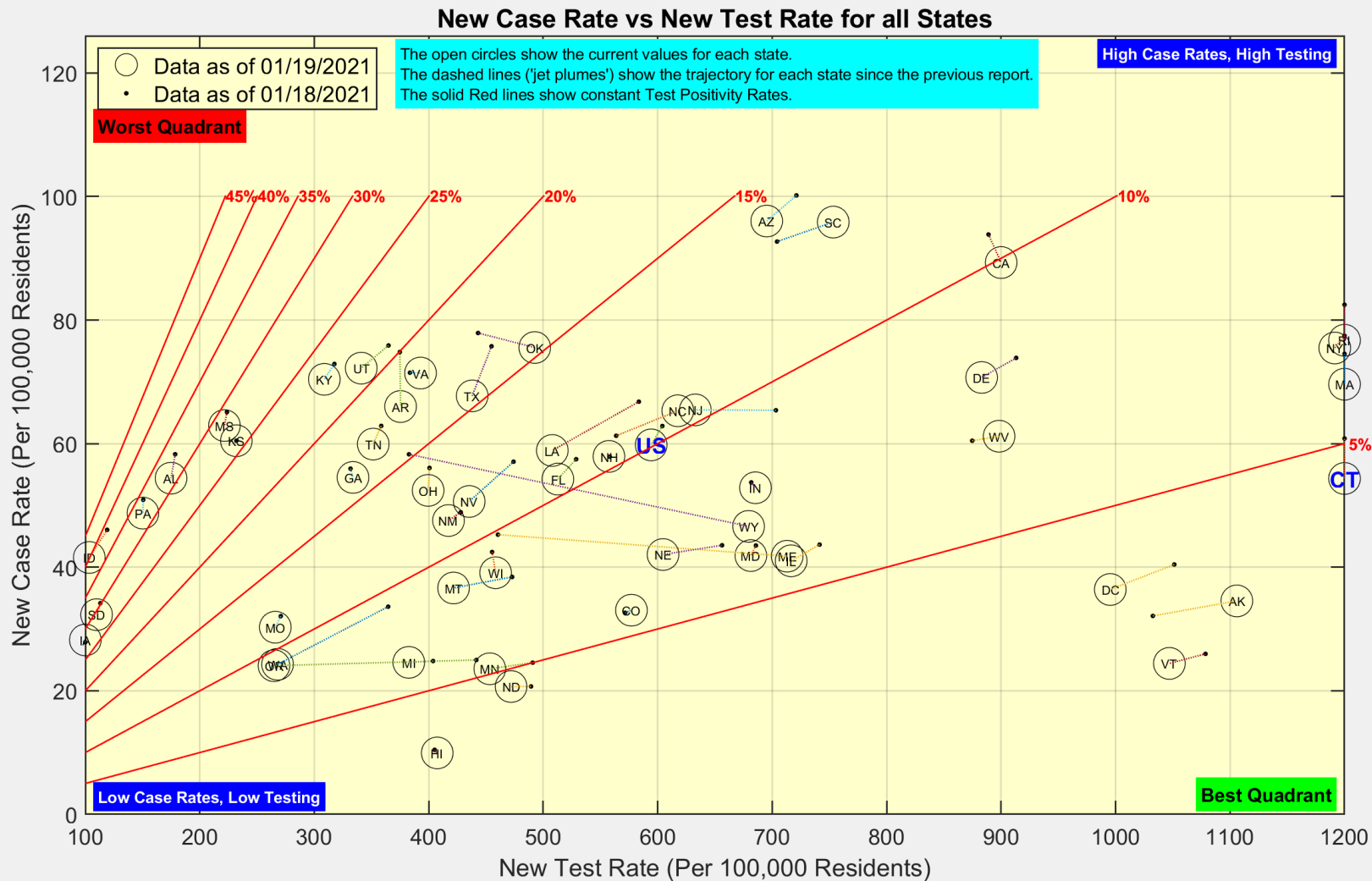
These are the distributions of New Cases and Deaths over age group for the State of Connecticut



Data Source: <https://data.ct.gov>



Here is the latest view of New Cases and New Tests for all states

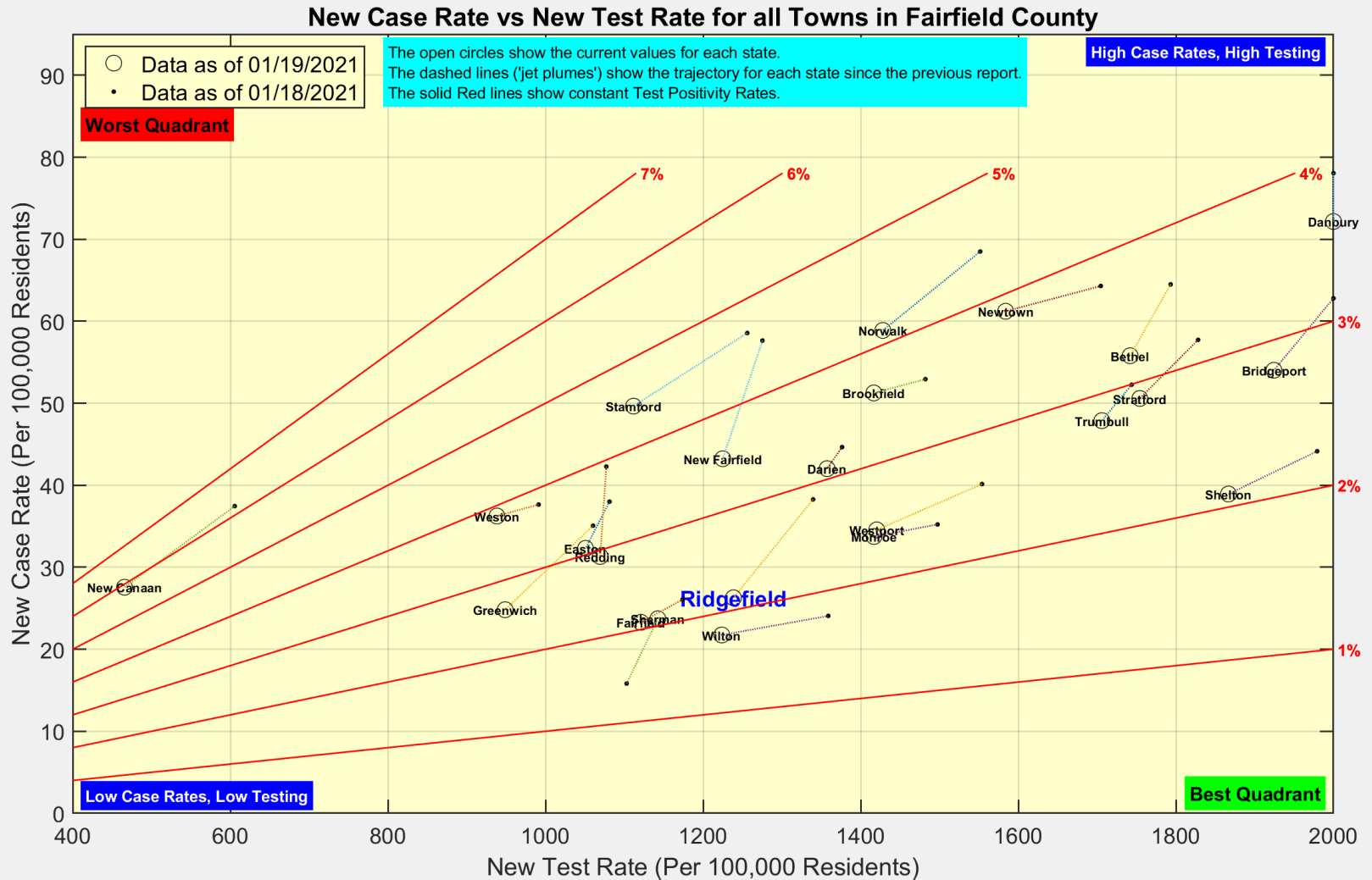


Data Source: <https://covidtracking.com/data/api>



Ridgefield COVID-19 Task Force

Here is the latest view of New Cases and New Tests for all towns in Fairfield County



Data Source: <https://data.ct.gov>



Ridgefield COVID-19 Task Force