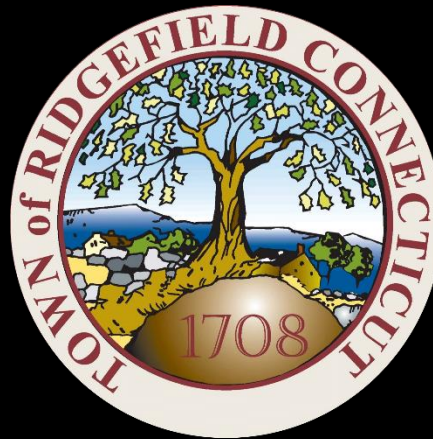


## Ridgefield COVID Report

Ridgefield COVID-19 Task Force



Data downloaded from  
<https://data.ct.gov/browse?category=Health+and+Human+Services>

Data downloaded on Thursday, January 14, 2021 at 4:00 PM  
This reflects data through Wednesday, January 13, 2021

## Ridgefield Summary

Data downloaded on Thursday, 01/14/2021 at 4:00 PM

Ridgefield	Wednesday 01/13/2021	Tuesday 01/12/2021
Number of New Cases Reported	7	32
New Case Rate (per 100,000 Residents)	49.1	52.6
New Test Rate (per 100,000 Residents)	955.7	1031.7
Test Positivity	5.1%	5.1%
Fairfield County	Wednesday 01/13/2021	Tuesday 01/12/2021
Number of New Cases Reported	226	934
New Case Rate (per 100,000 Residents)	73.1	82.3
New Test Rate (per 100,000 Residents)	1013.4	1113.8
Test Positivity	7.2%	7.4%
Currently Hospitalized	243	267

Data Source: <https://data.ct.gov>. This report reflects data reported to the State through Wednesday 01/13/2021. The New Case Rate, New Test Rate, and Test Positivity are computed using 7-day moving averages.

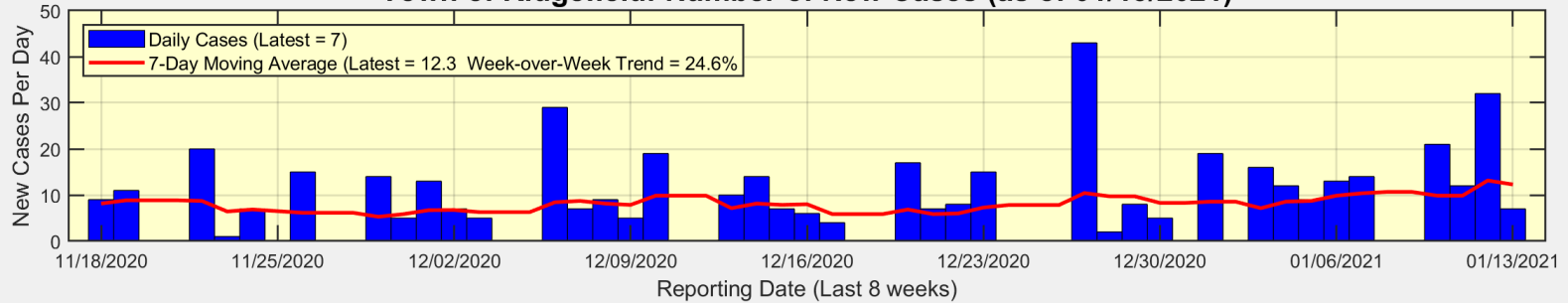
Our data science confirms CDC and other studies:

***Wearing a Mask Reduces COVID Case Rates***

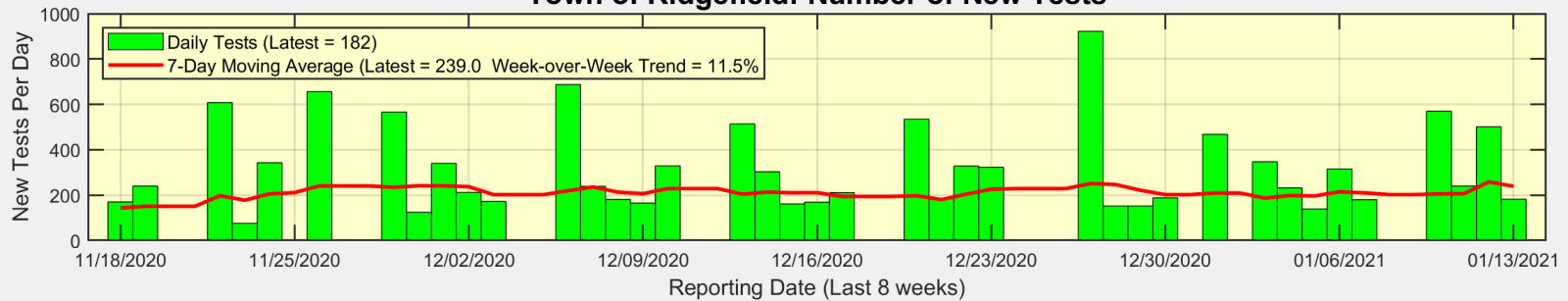


# There were 7 new cases reported for Ridgefield on Wednesday

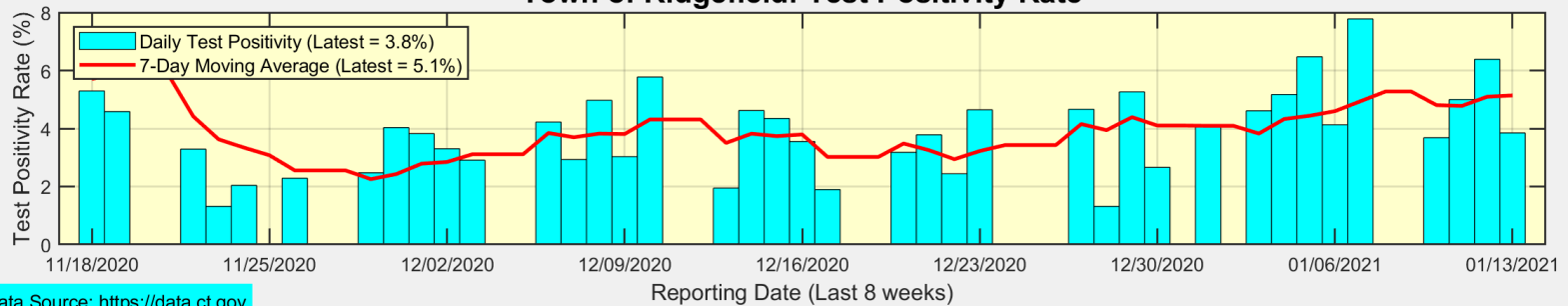
**Town of Ridgefield: Number of New Cases (as of 01/13/2021)**



**Town of Ridgefield: Number of New Tests**



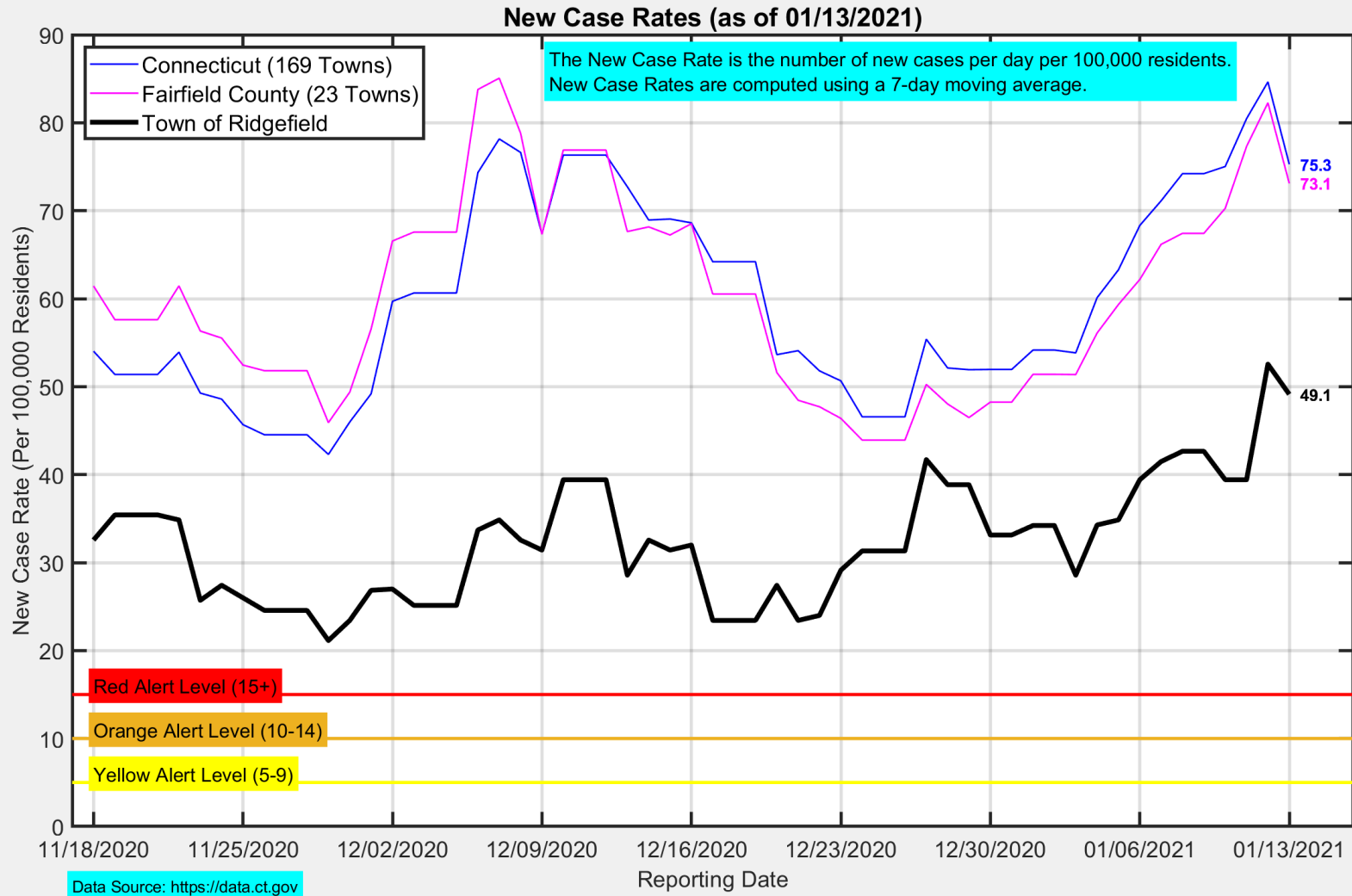
**Town of Ridgefield: Test Positivity Rate**



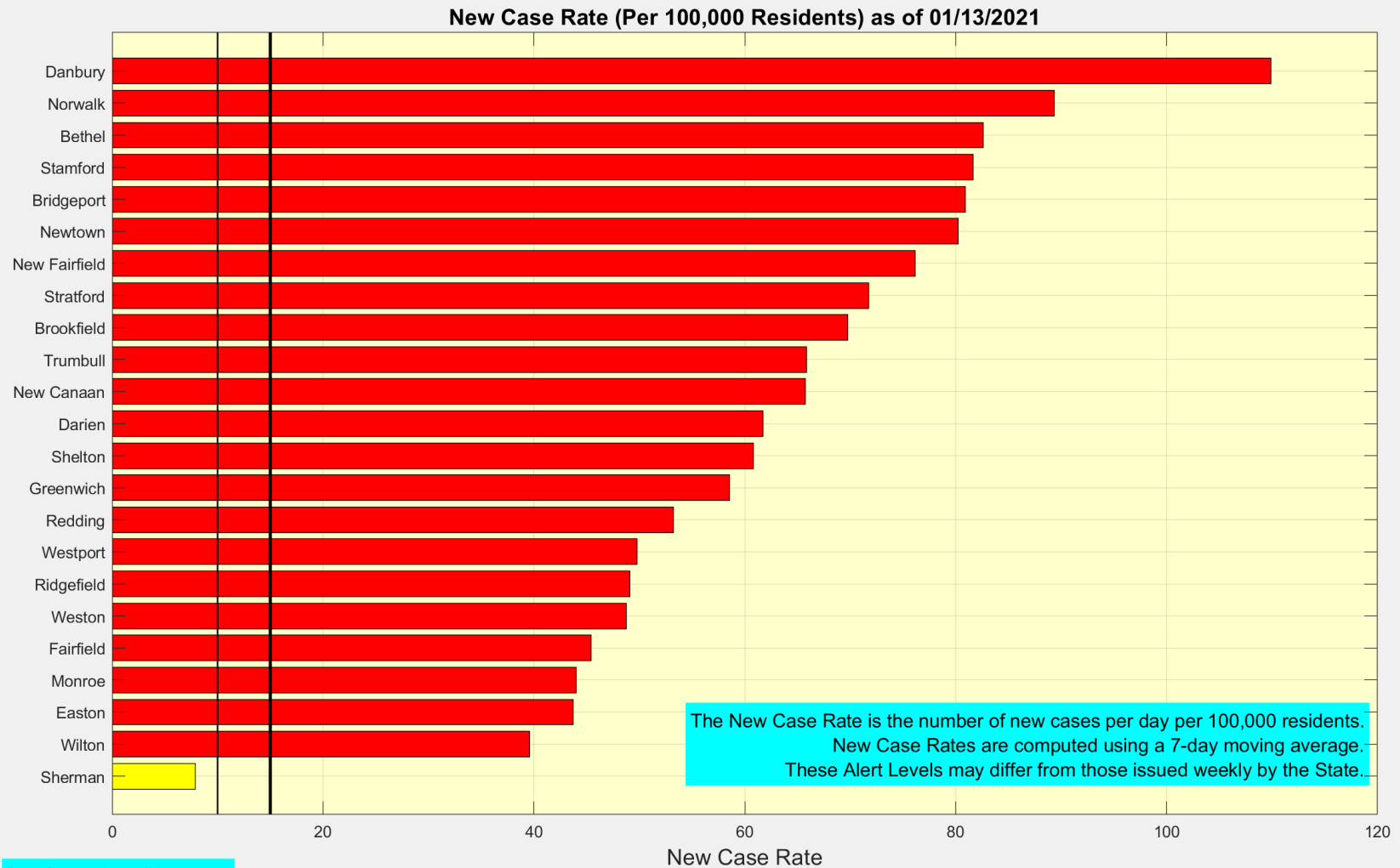
Data Source: <https://data.ct.gov>



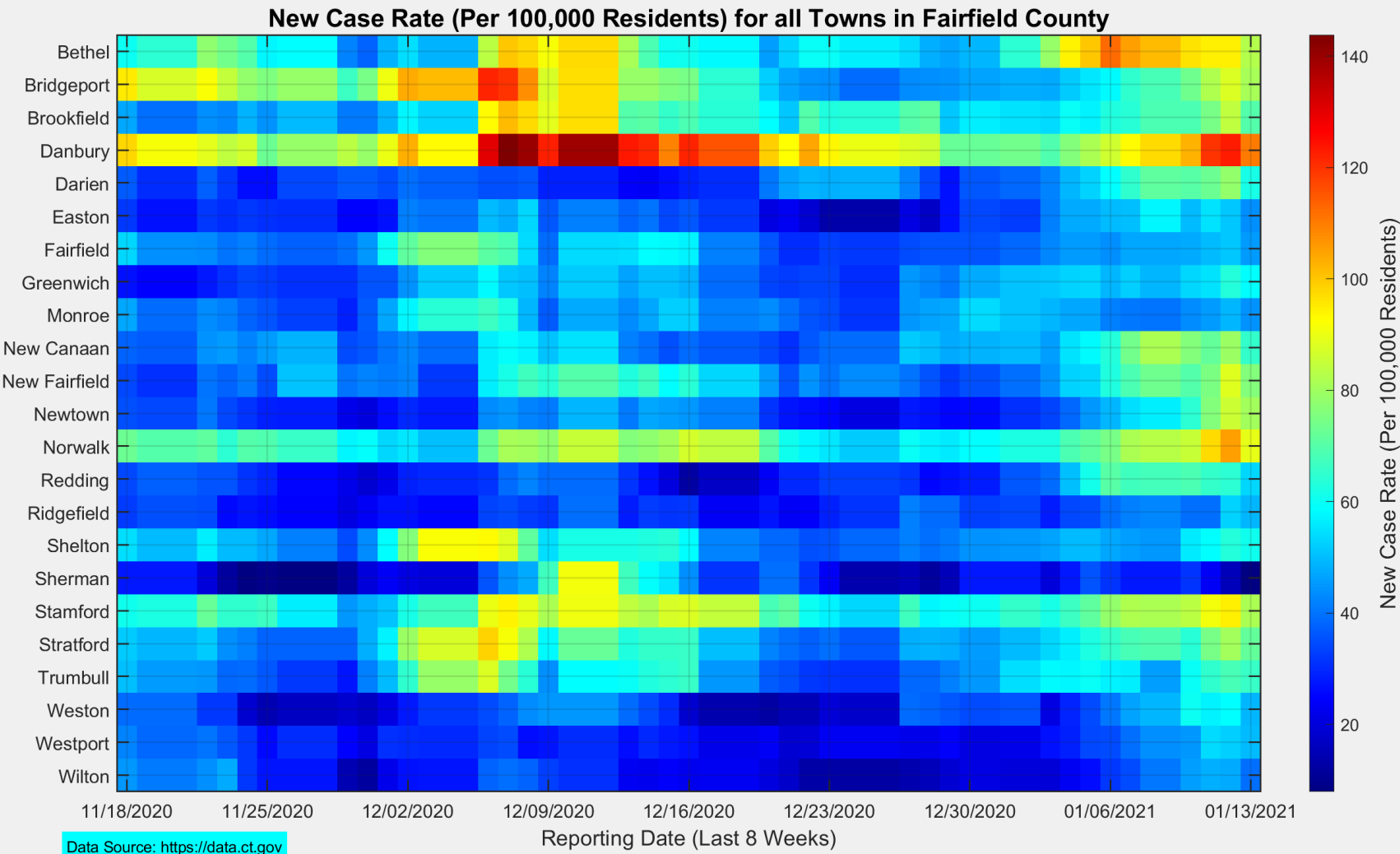
# The New Case Rate in Ridgefield decreased to 49.1



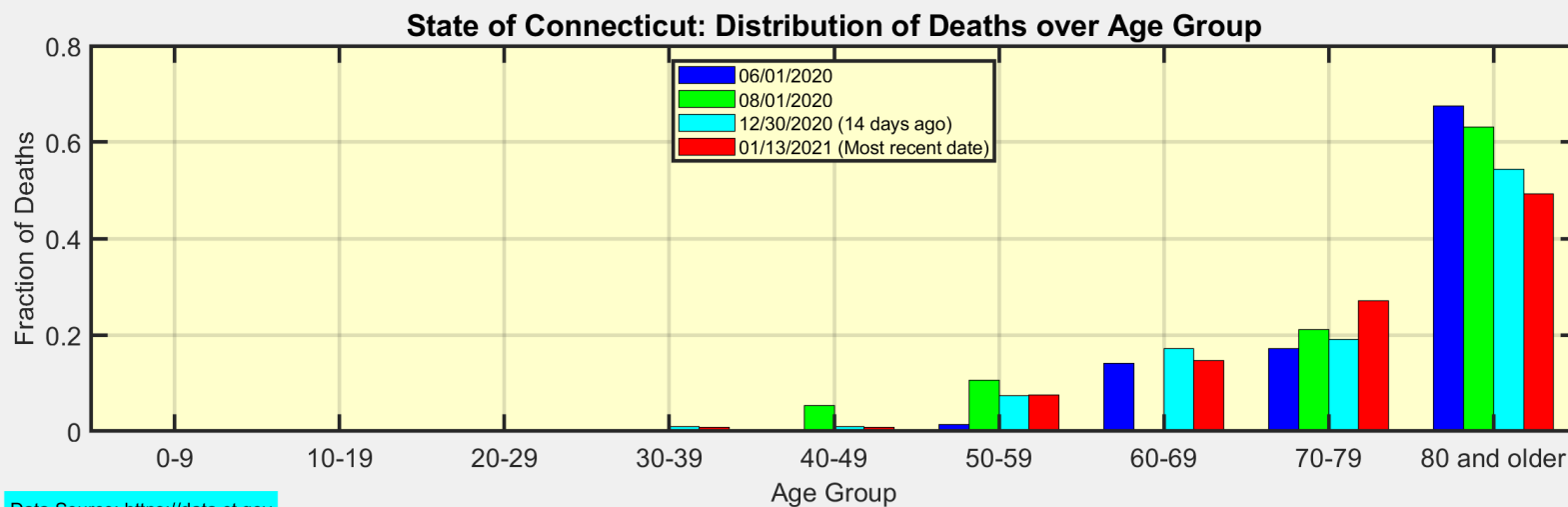
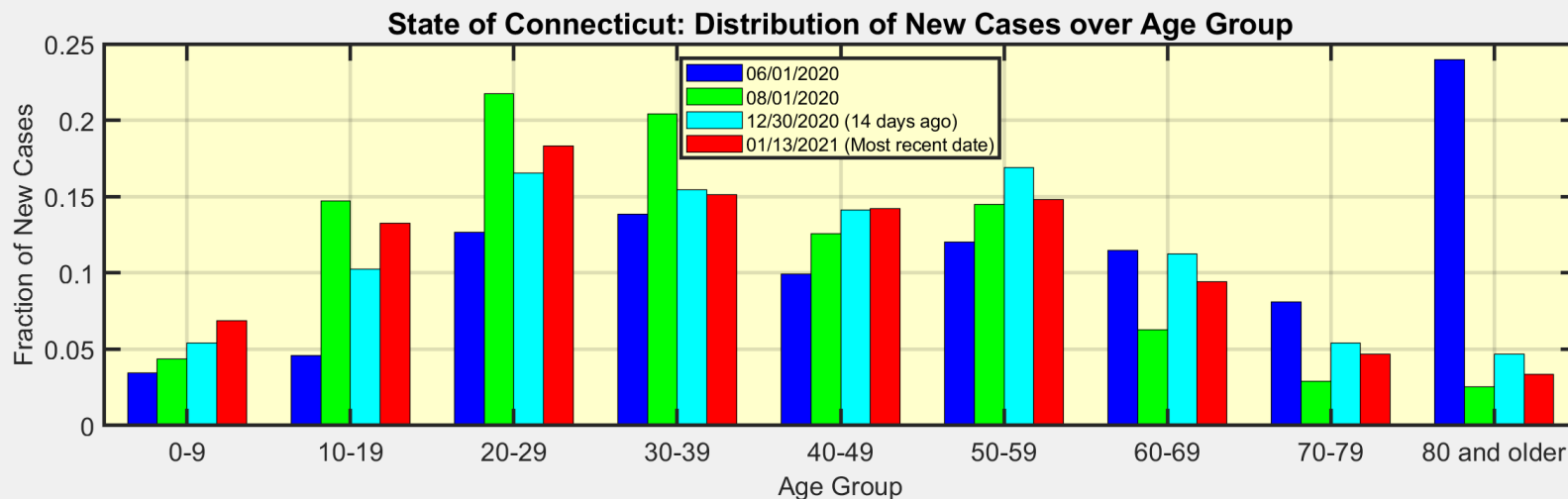
# Here are the latest New Case Rates for all towns in Fairfield County



This heat map shows the progression of New Case Rates for all towns in Fairfield County



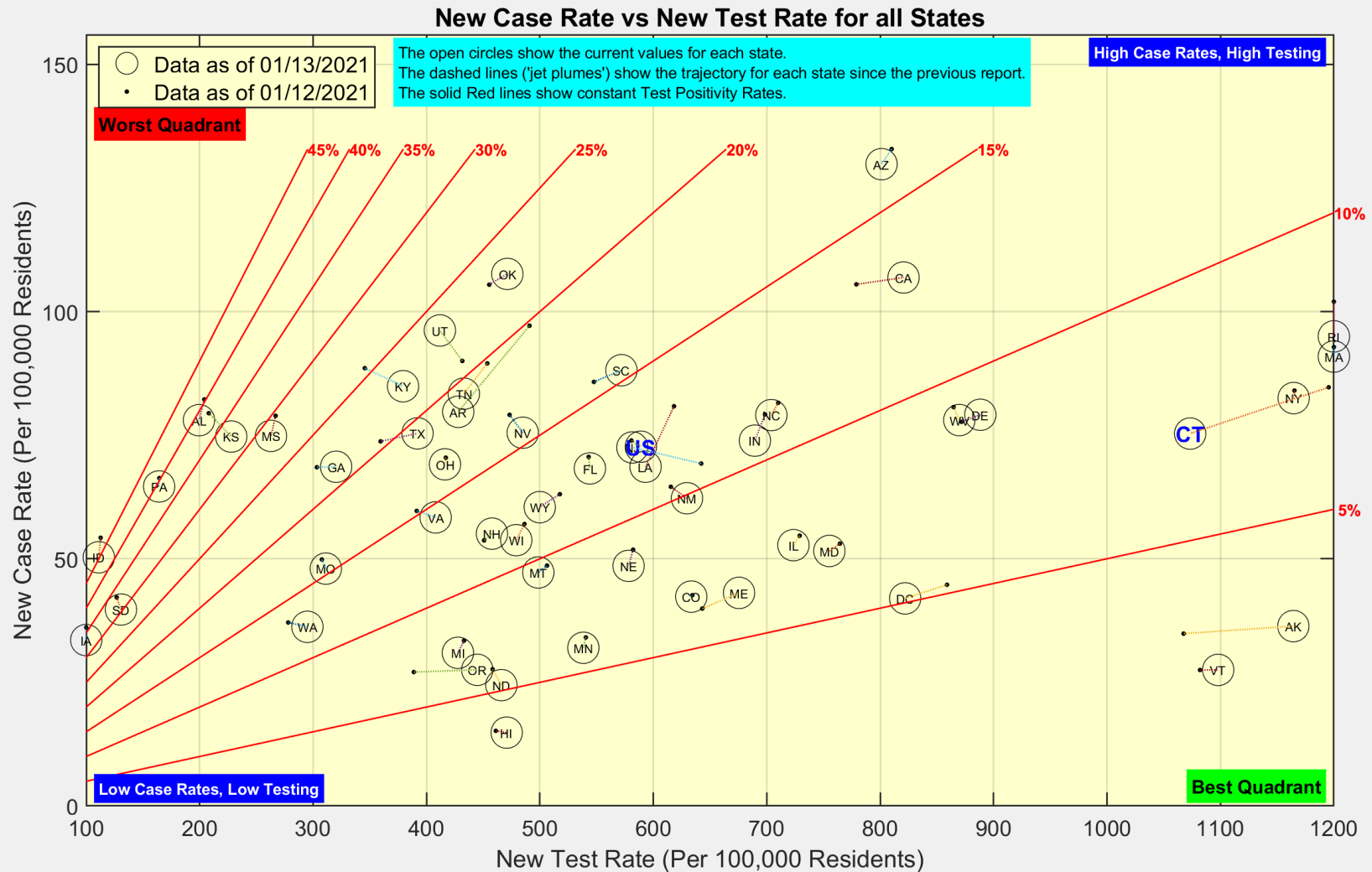
# These are the distributions of New Cases and Deaths over age group for the State of Connecticut



Data Source: <https://data.ct.gov>



# Here is the latest view of New Cases and New Tests for all states



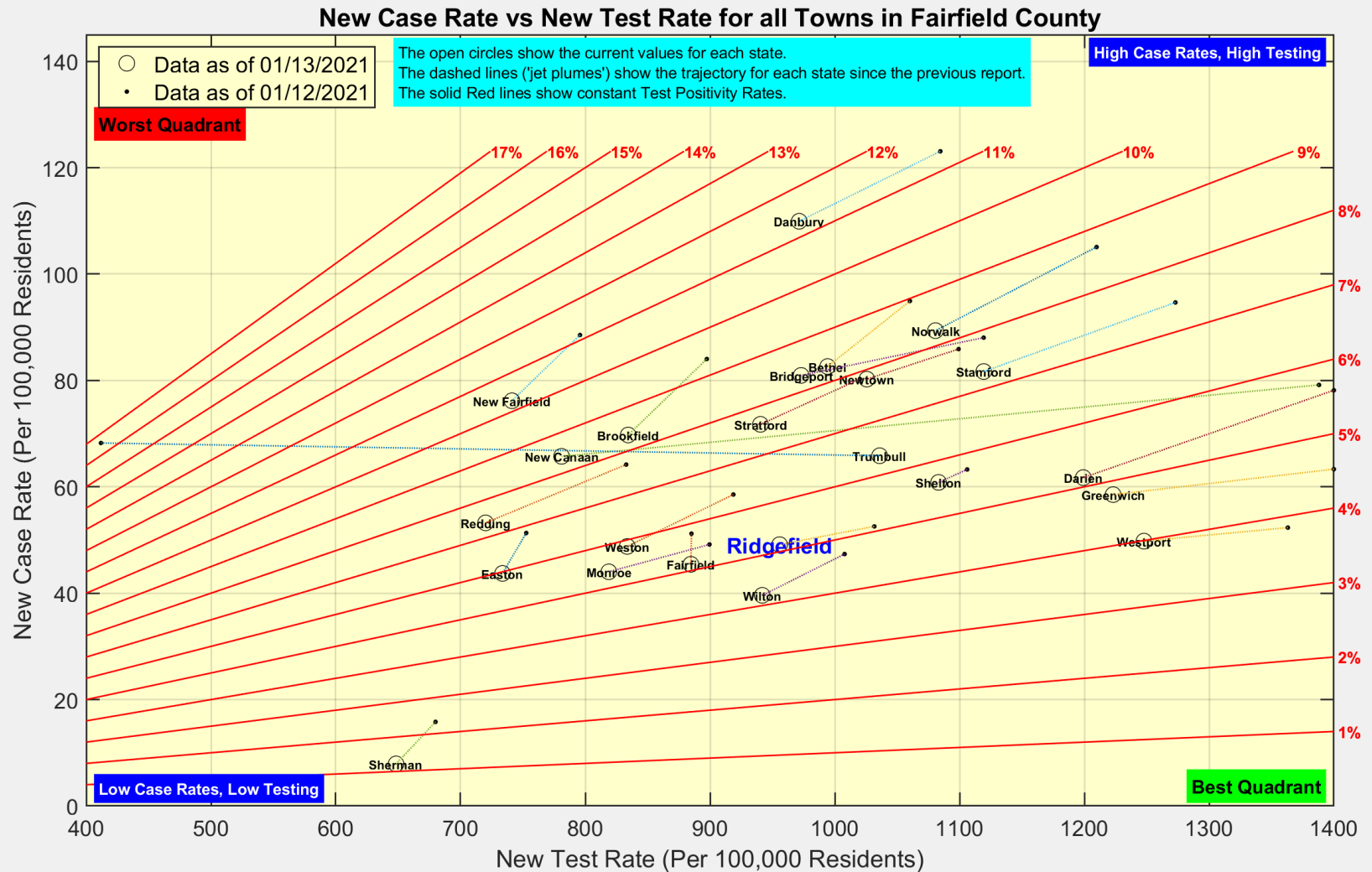
Data Source: <https://covidtracking.com/data/api>



Ridgefield COVID-19 Task Force



# Here is the latest view of New Cases and New Tests for all towns in Fairfield County



Data Source: <https://data.ct.gov>



Ridgefield COVID-19 Task Force