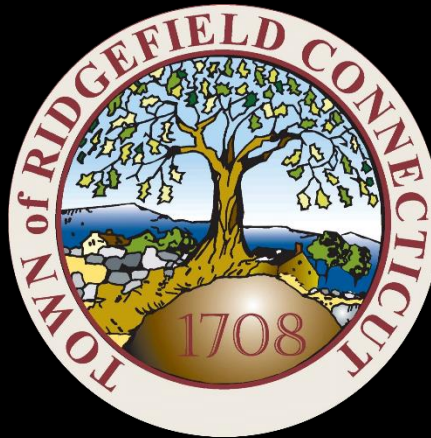


## Ridgefield COVID Report

### Ridgefield COVID-19 Task Force



Data downloaded from  
<https://data.ct.gov/browse?category=Health+and+Human+Services>

Data downloaded on Tuesday, January 12, 2021 at 4:00 PM  
This reflects data through Monday, January 11, 2021

# Ridgefield Summary

Data downloaded on Tuesday, 01/12/2021 at 4:00 PM

| Ridgefield  | Monday 01/11/2021 | Sunday 01/10/2021 |
|---|-------------------|-------------------|
| Number of New Cases Reported  | 12                | 21                |
| New Case Rate (per 100,000 Residents)   | 39.4              | 39.4              |
| New Test Rate (per 100,000 Residents)   | 824.9             | 820.3             |
| Test Positivity   | 4.8%              | 4.8%              |
|   |                   |                   |
| Fairfield County  | Monday 01/11/2021 | Sunday 01/10/2021 |
| Number of New Cases Reported  | 993               | 1788              |
| New Case Rate (per 100,000 Residents)   | 77.3              | 70.3              |
| New Test Rate (per 100,000 Residents)   | 1027.3            | 1015.6            |
| Test Positivity   | 7.5%              | 6.9%              |
| Currently Hospitalized  | 284               | 281               |
| Data Source: <a href="https://data.ct.gov">https://data.ct.gov</a> . This report reflects data reported to the State through Monday 01/11/2021. |                   |                   |
| The New Case Rate, New Test Rate, and Test Positivity are computed using 7-day moving averages.   |                   |                   |
| <b>NOTE: The Number of New Cases Reported for Sunday is the TOTAL over the last THREE DAYS (Friday, Saturday, Sunday).</b>                      |                   |                   |

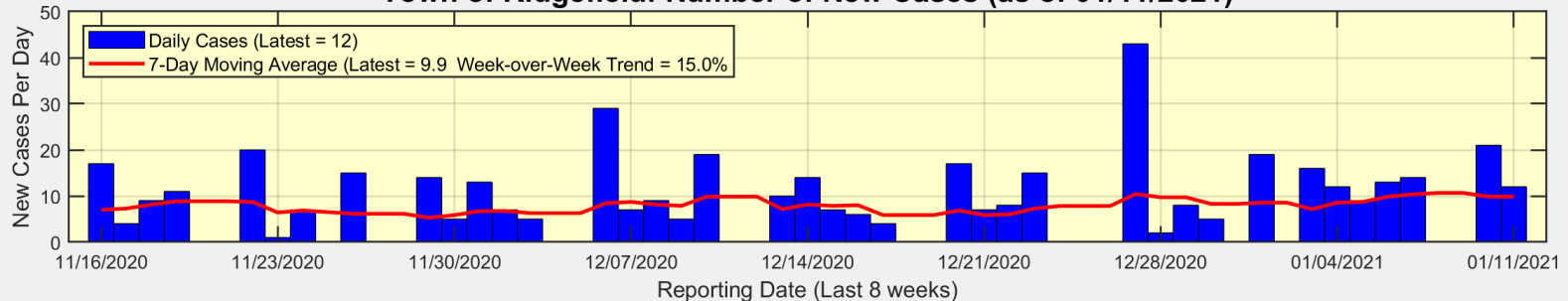
Our data science confirms CDC and other studies:

***Wearing a Mask Reduces COVID Case Rates***

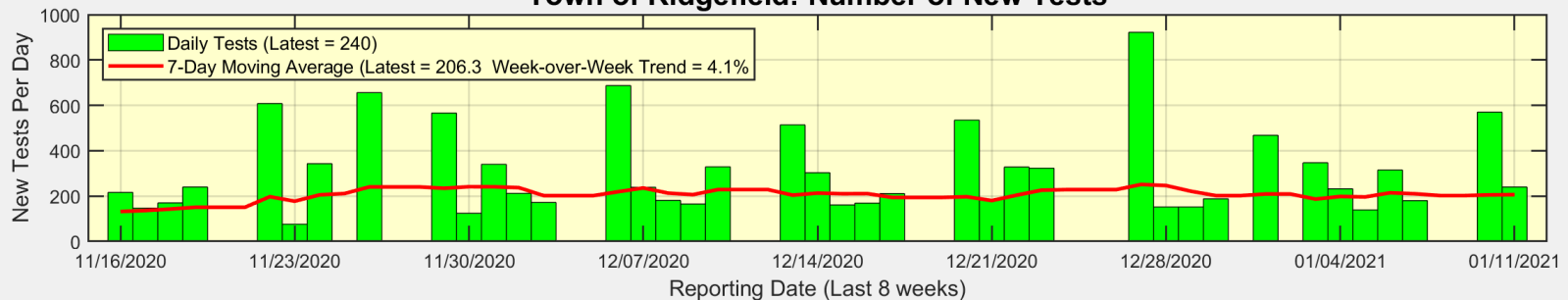


# There were 12 new cases reported for Ridgefield on Monday

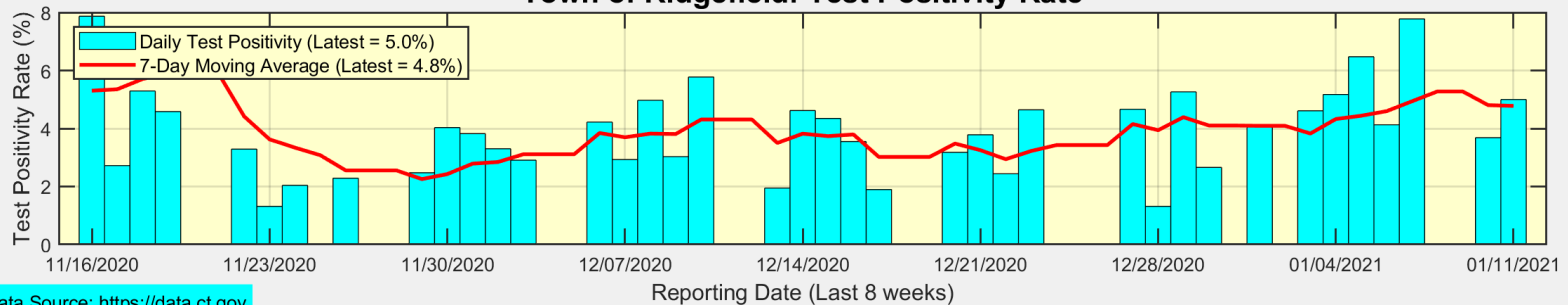
**Town of Ridgefield: Number of New Cases (as of 01/11/2021)**



**Town of Ridgefield: Number of New Tests**



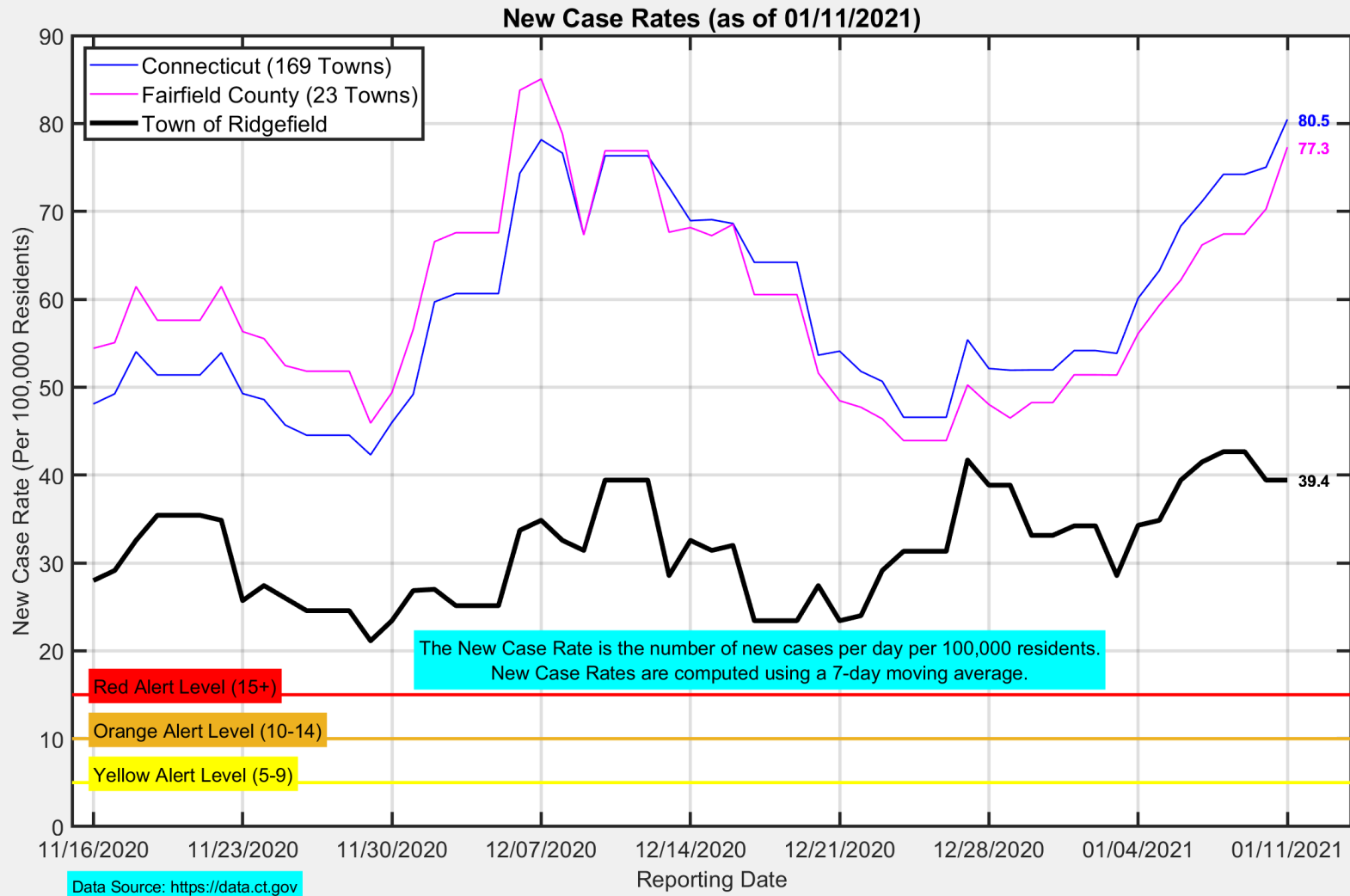
**Town of Ridgefield: Test Positivity Rate**



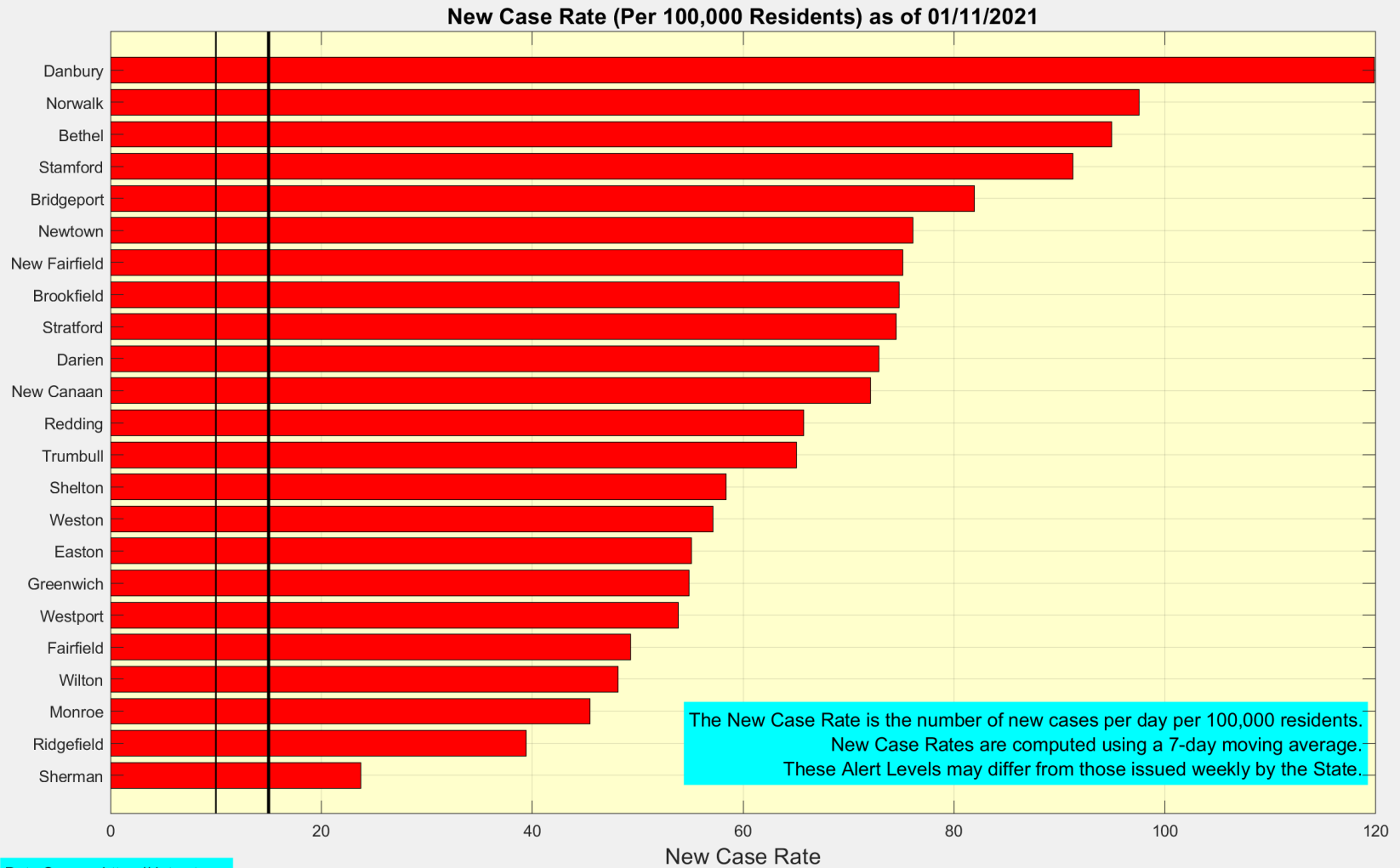
Data Source: <https://data.ct.gov>



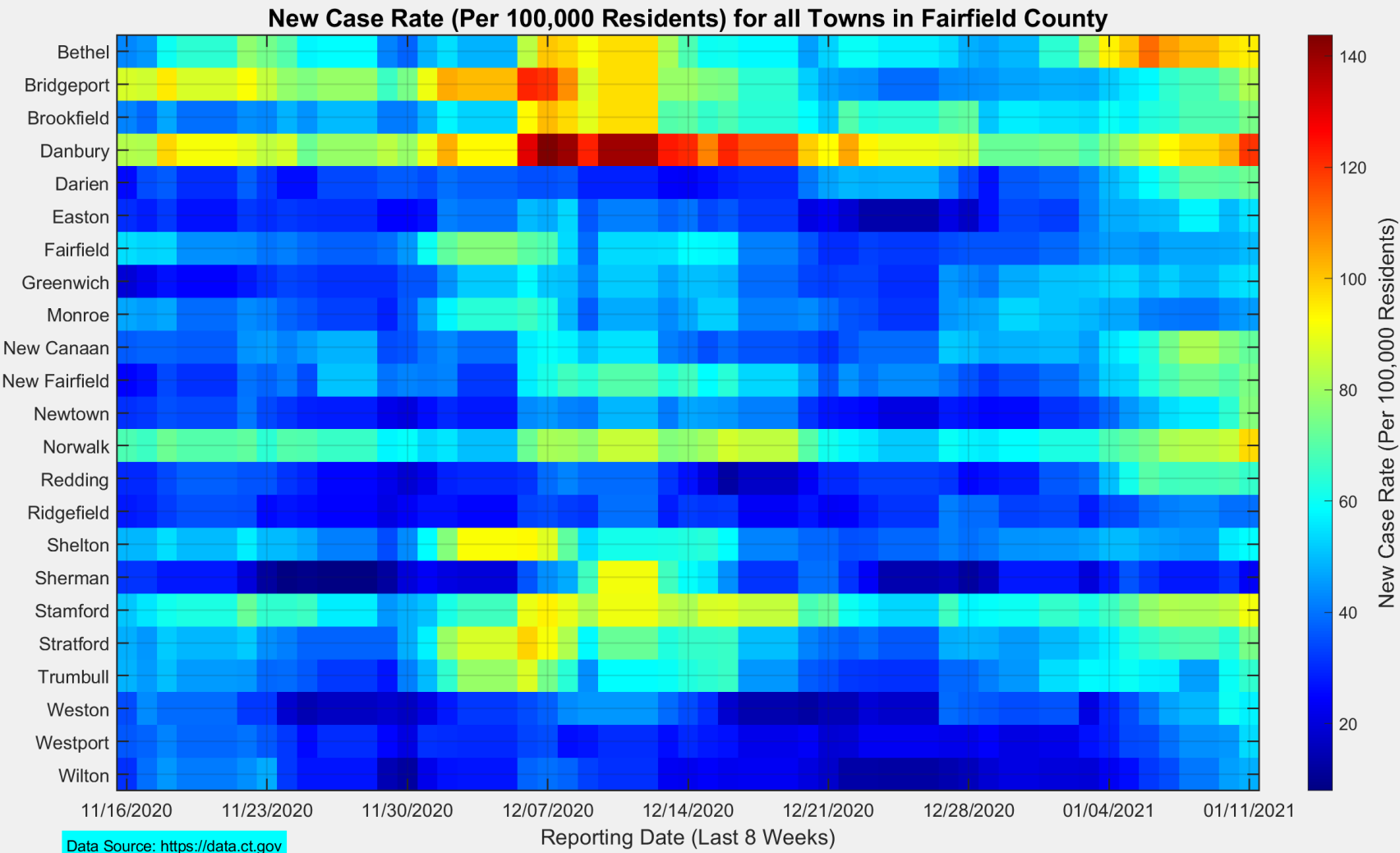
## The New Case Rate in Ridgefield remained stable at 39.4



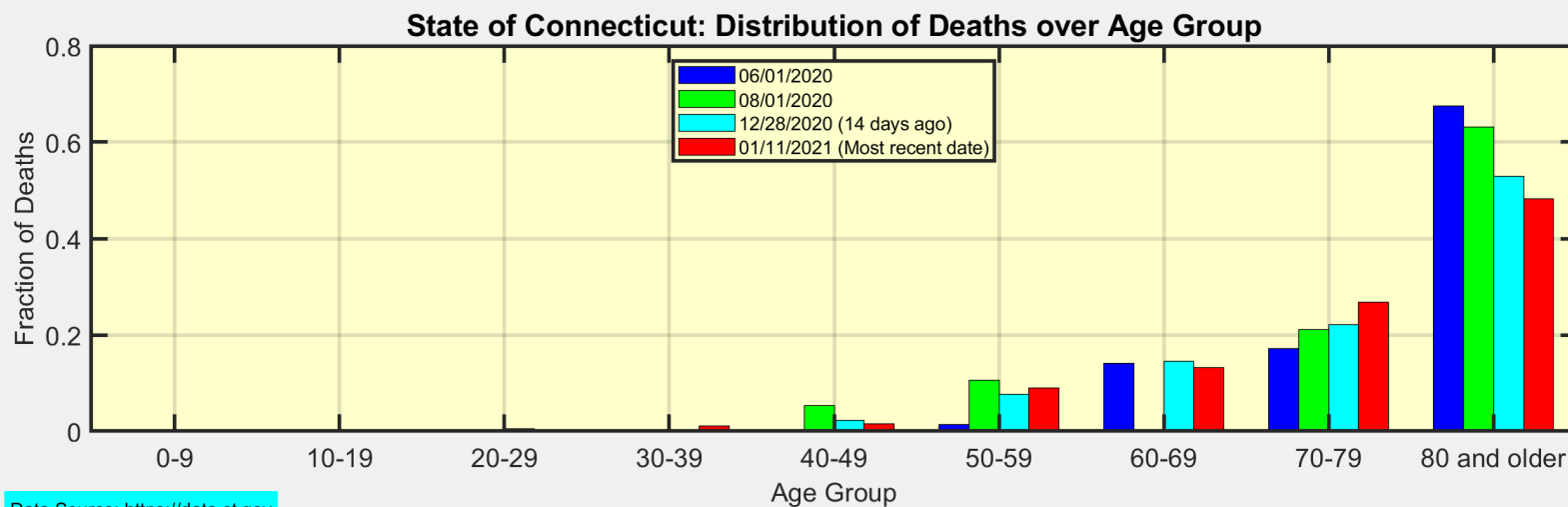
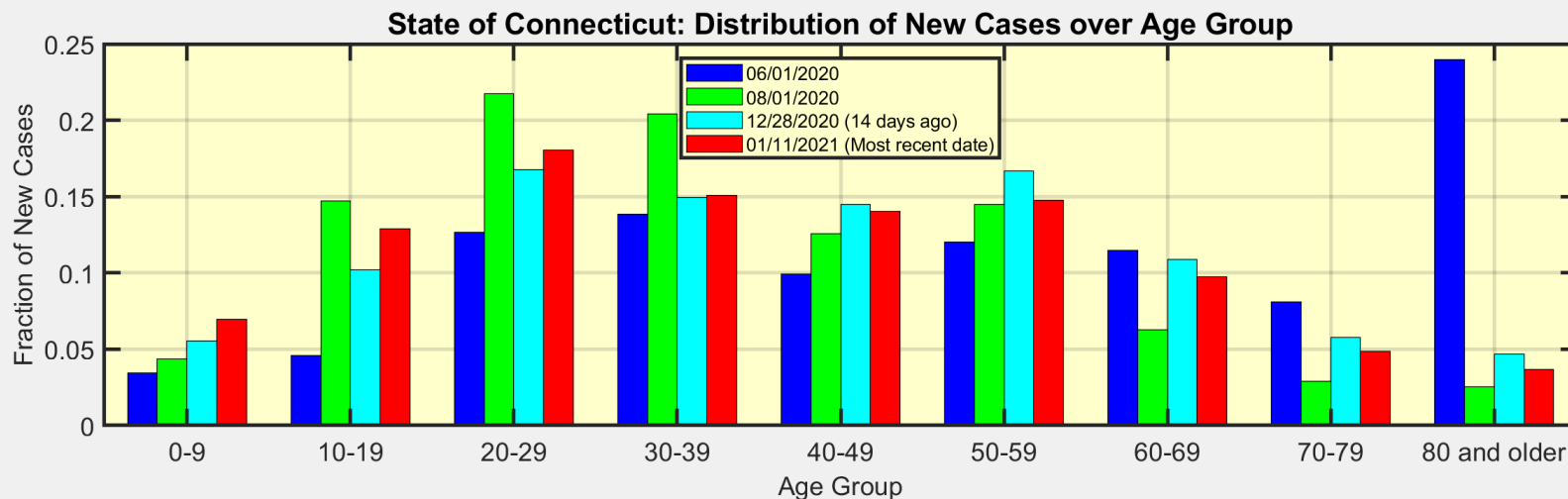
# Here are the latest New Case Rates for all towns in Fairfield County



# This heat map shows the progression of New Case Rates for all towns in Fairfield County



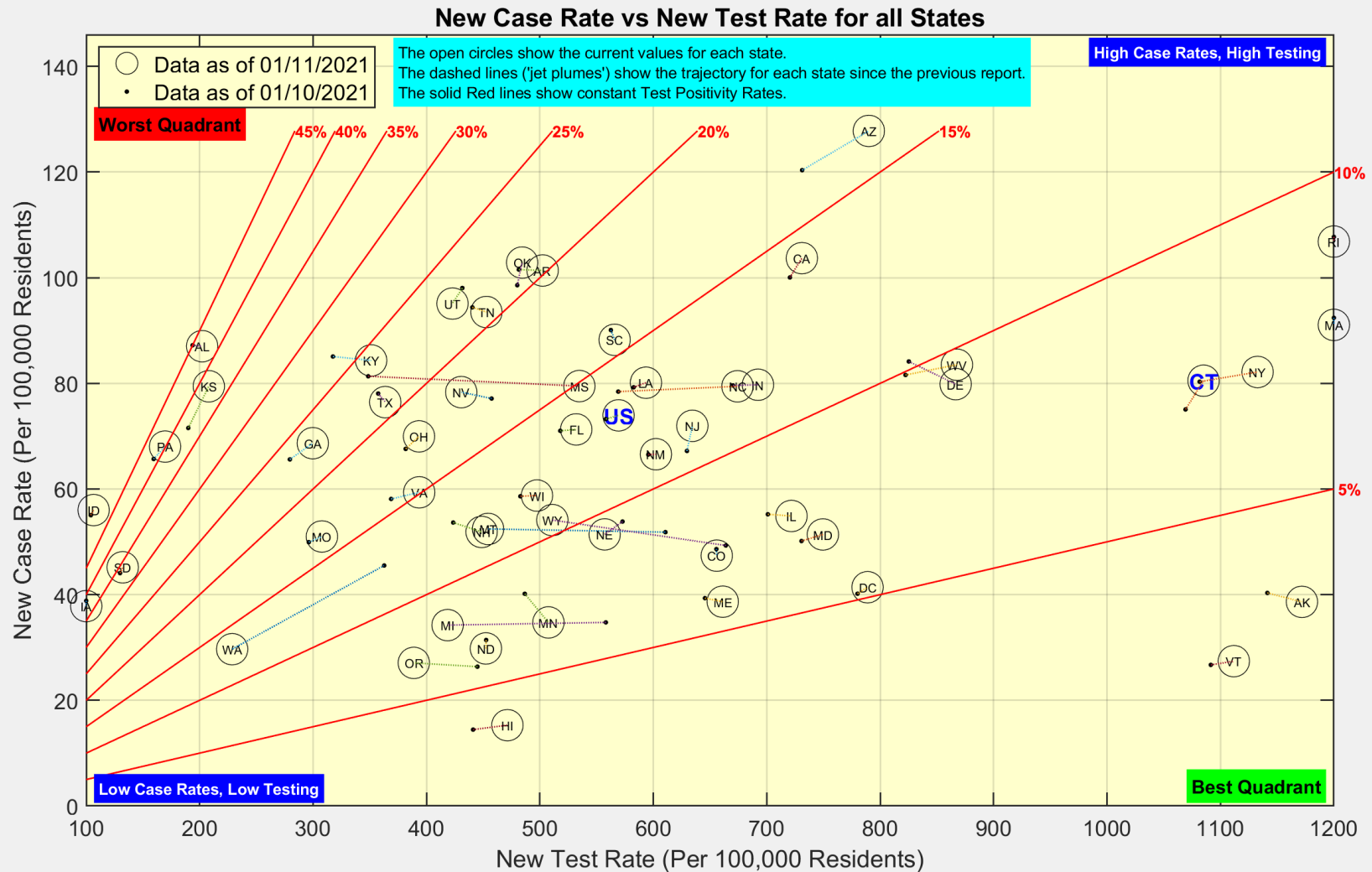
# These are the distributions of New Cases and Deaths over age group for the State of Connecticut



Data Source: <https://data.ct.gov>



# Here is the latest view of New Cases and New Tests for all states



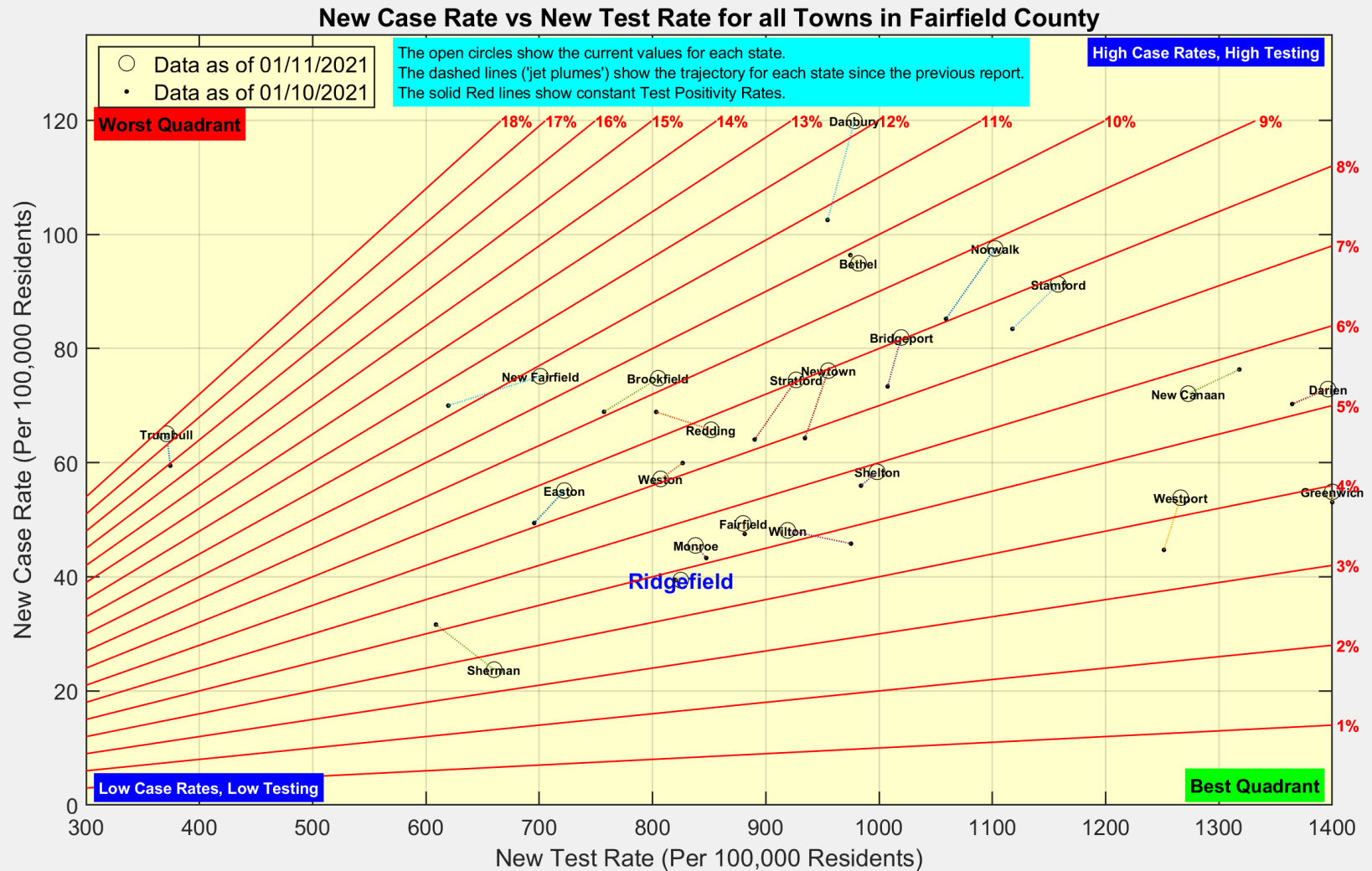
Data Source: <https://covidtracking.com/data/api>



Ridgefield COVID-19 Task Force



# Here is the latest view of New Cases and New Tests for all towns in Fairfield County



Data Source: <https://data.ct.gov>



Ridgefield COVID-19 Task Force