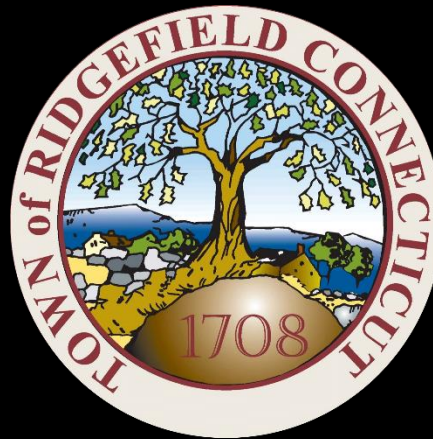


## Ridgefield COVID Report

### Ridgefield COVID-19 Task Force



Data downloaded from  
<https://data.ct.gov/browse?category=Health+and+Human+Services>

Data downloaded on Monday, January 11, 2021 at 4:00 PM  
This reflects data through Sunday, January 10, 2021

# Ridgefield Summary

Data downloaded on Monday, 01/11/2021 at 4:00 PM

Ridgefield	Sunday 01/10/2021	Thursday 01/07/2021
Number of New Cases Reported	21	14
New Case Rate (per 100,000 Residents)	39.4	41.5
New Test Rate (per 100,000 Residents)	820.3	840.3
Test Positivity	4.8%	4.9%
Fairfield County	Sunday 01/10/2021	Thursday 01/07/2021
Number of New Cases Reported	1788	889
New Case Rate (per 100,000 Residents)	70.3	66.2
New Test Rate (per 100,000 Residents)	1015.7	996.9
Test Positivity	6.9%	6.6%
Currently Hospitalized	281	274
Data Source: <a href="https://data.ct.gov">https://data.ct.gov</a> . This report reflects data reported to the State through Sunday 01/10/2021. The New Case Rate, New Test Rate, and Test Positivity are computed using 7-day moving averages.		
<b>NOTE: The Number of New Cases Reported for Sunday is the TOTAL over the last THREE DAYS (Friday, Saturday, Sunday).</b>		

Our data science confirms CDC and other studies:

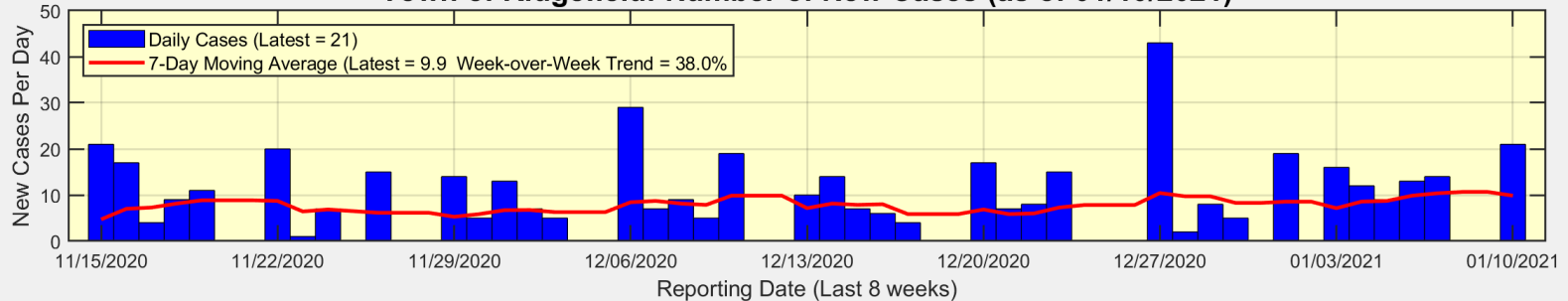
***Wearing a Mask Reduces COVID Case Rates***



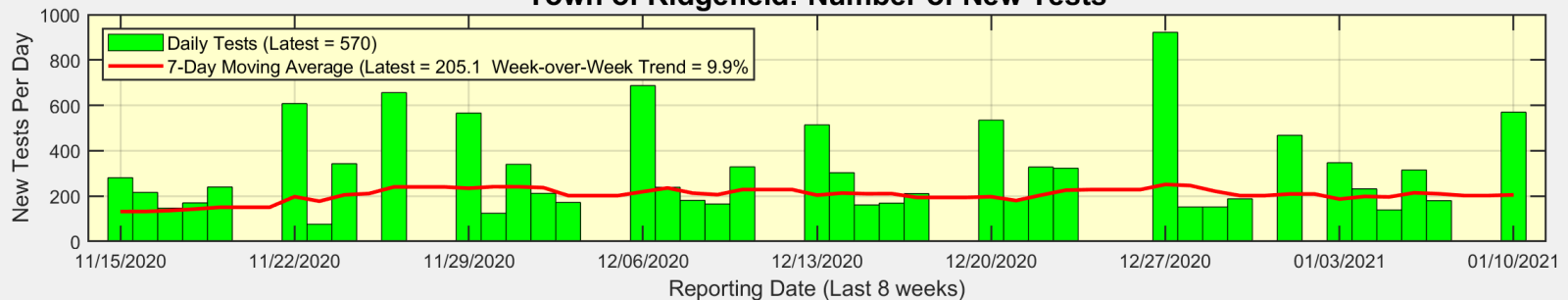
Ridgefield COVID-19 Task Force

# There were 21 new cases reported for Ridgefield over the past 3 days

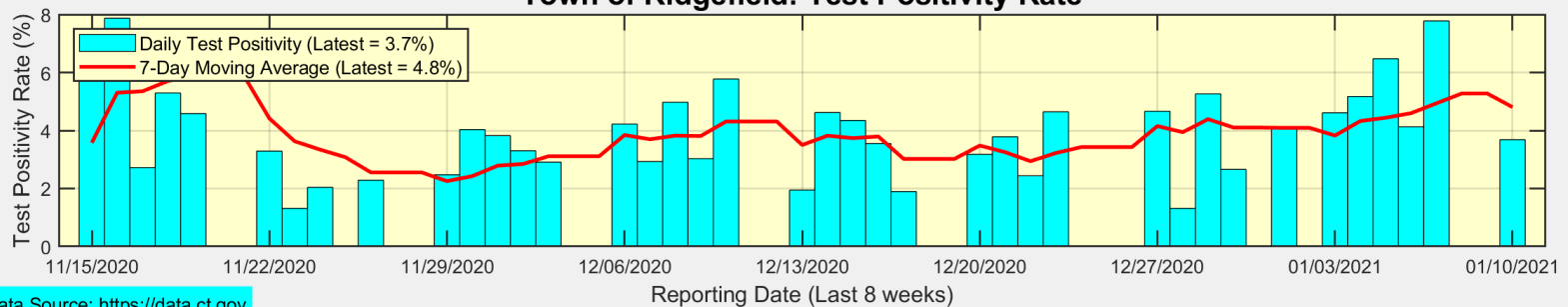
## Town of Ridgefield: Number of New Cases (as of 01/10/2021)



## Town of Ridgefield: Number of New Tests



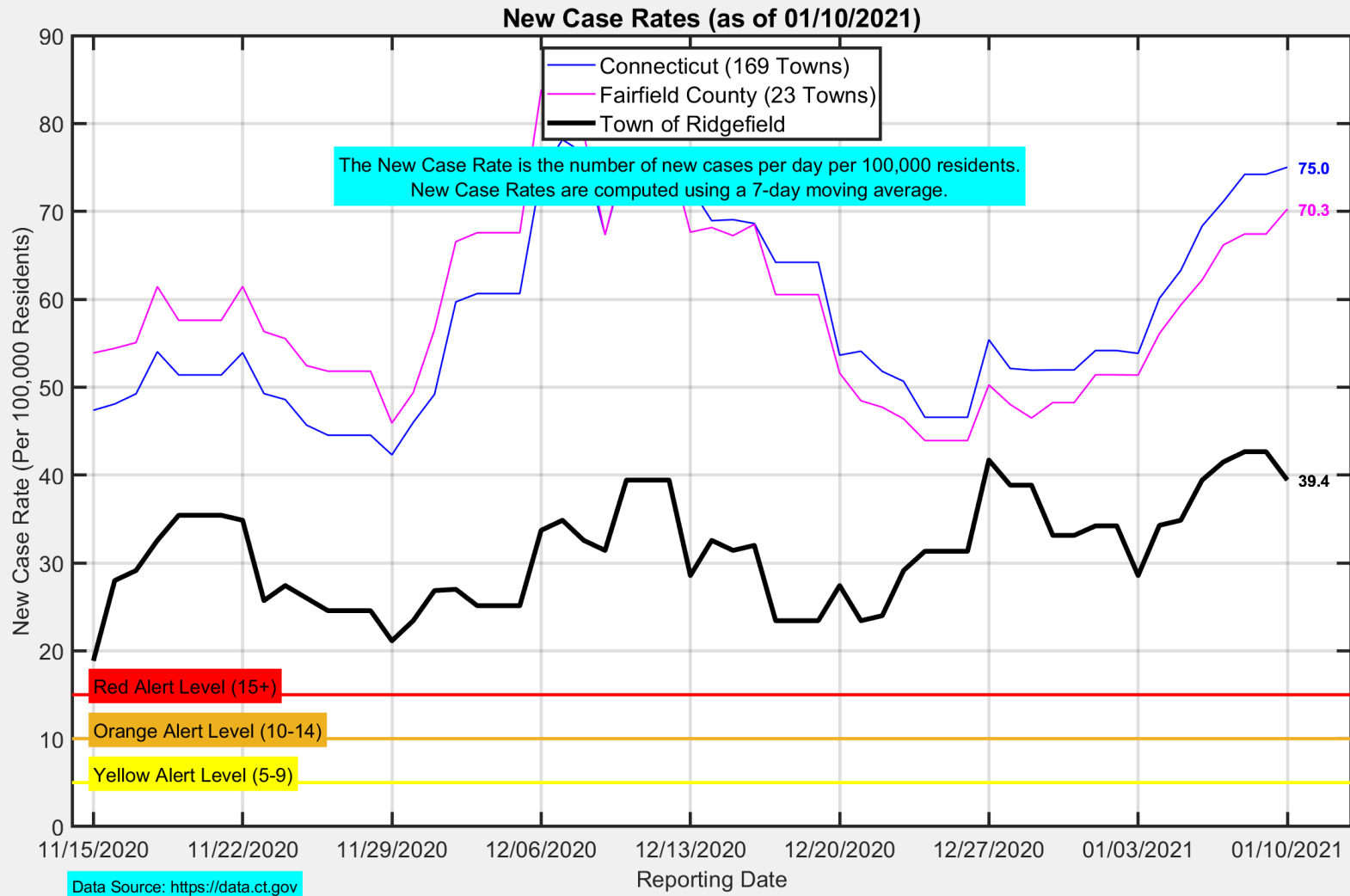
## Town of Ridgefield: Test Positivity Rate



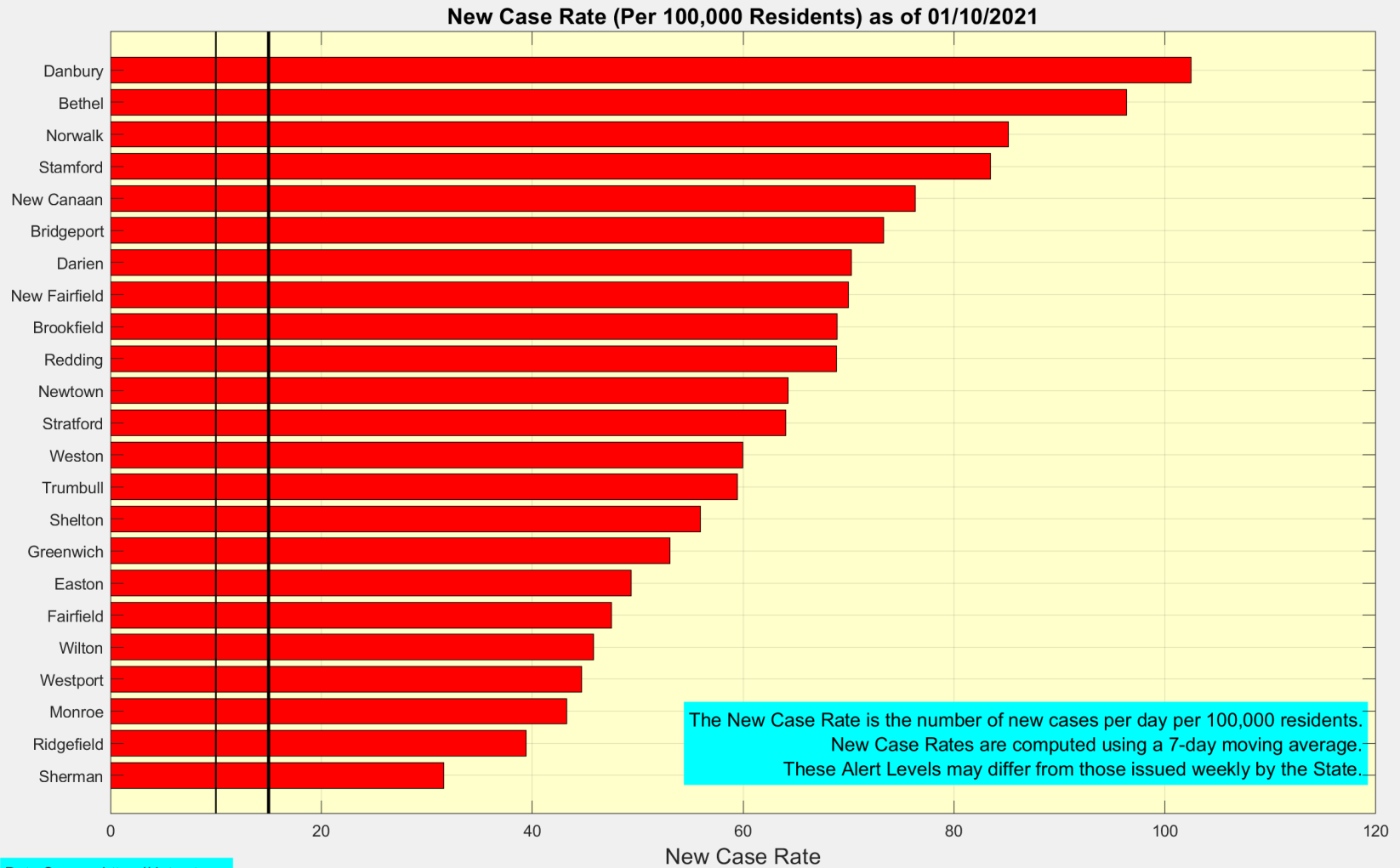
Data Source: <https://data.ct.gov>



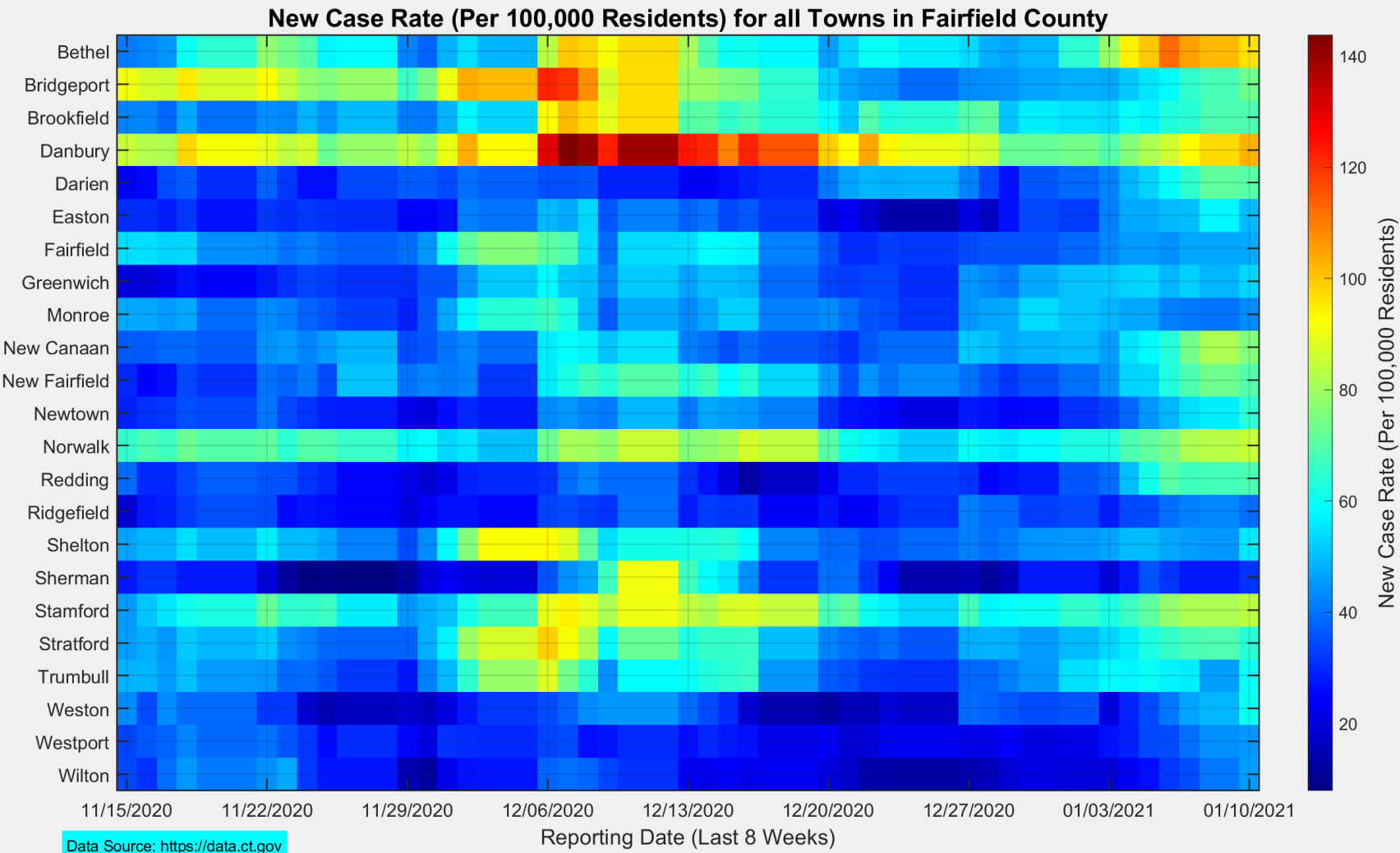
# The New Case Rate in Ridgefield Decreased to 39.4



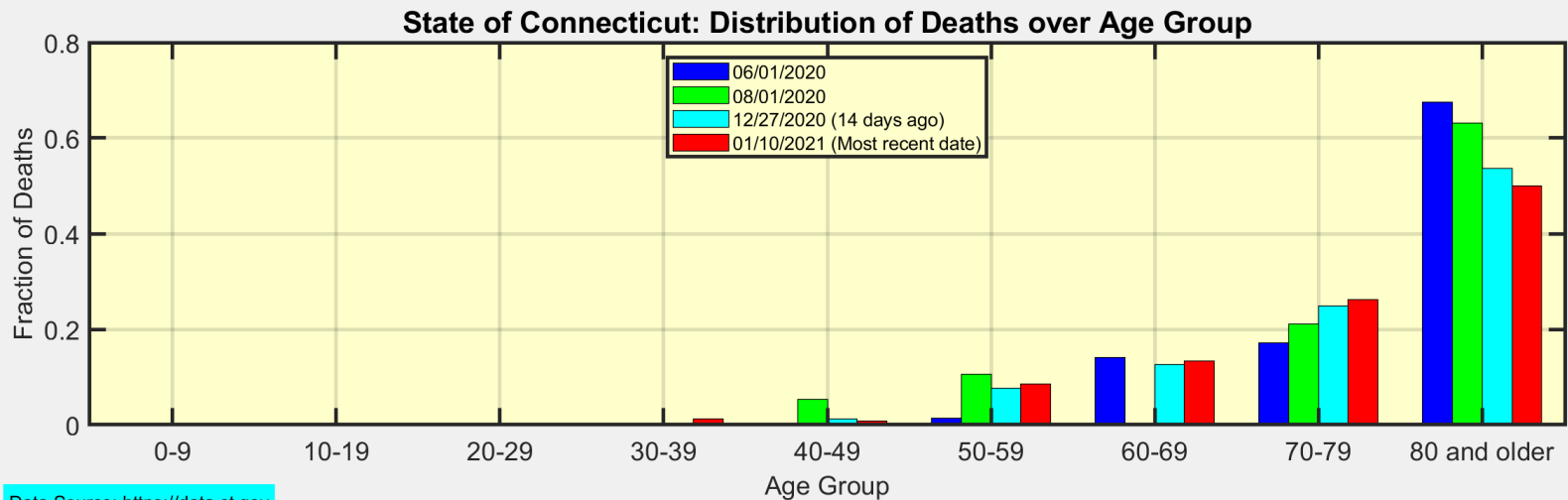
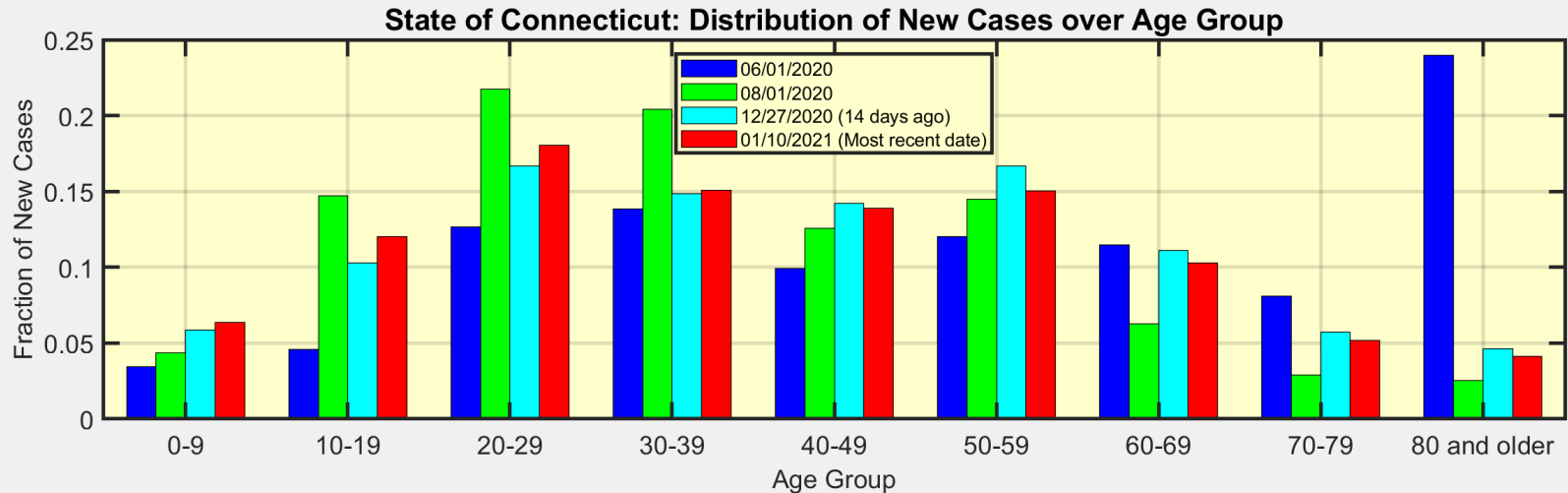
# Here are the latest New Case Rates for all towns in Fairfield County



This heat map shows the progression of New Case Rates for all towns in Fairfield County



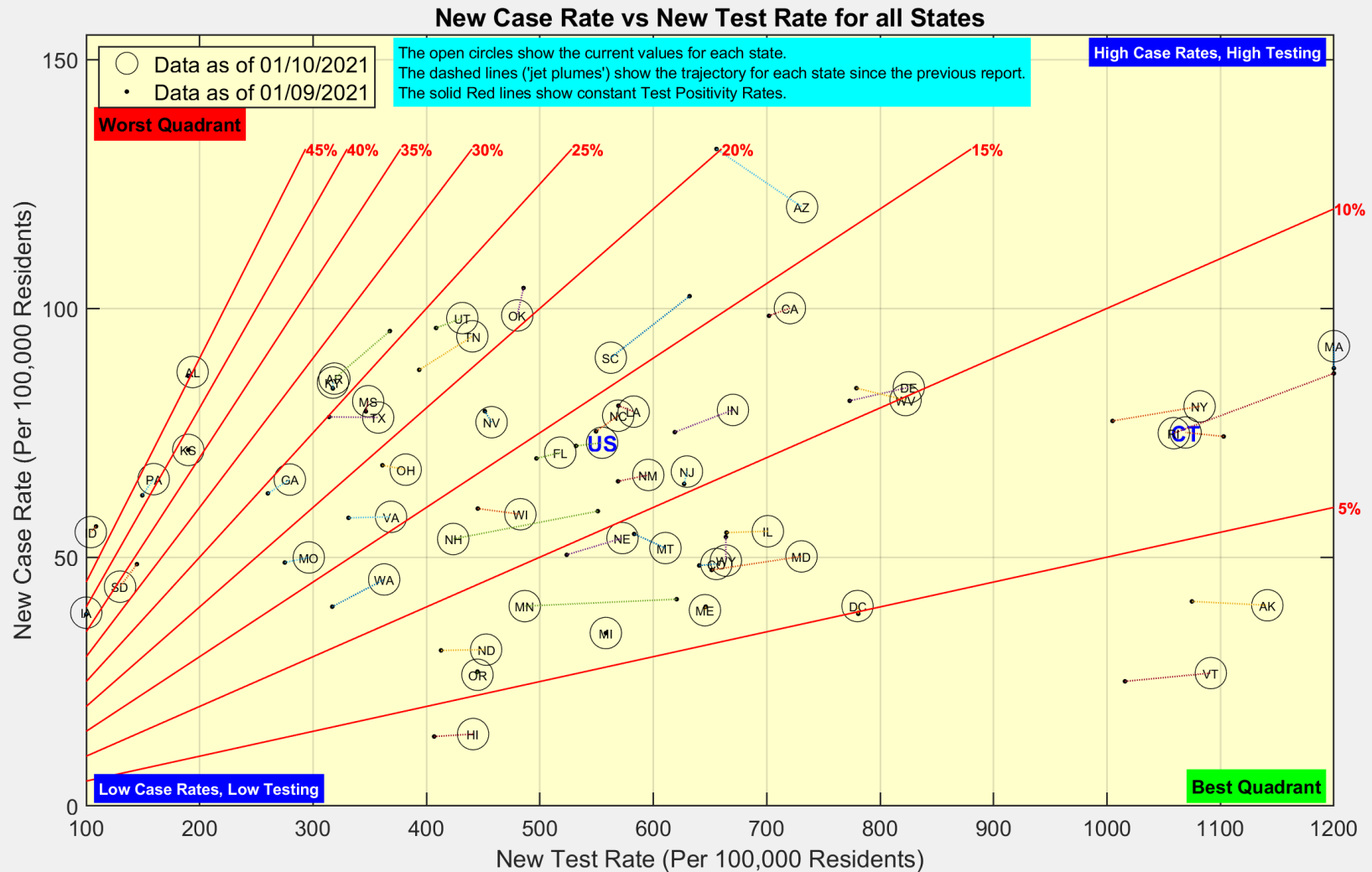
# These are the distributions of New Cases and Deaths over age group for the State of Connecticut



Data Source: <https://data.ct.gov>



# Here is the latest view of New Cases and New Tests for all states



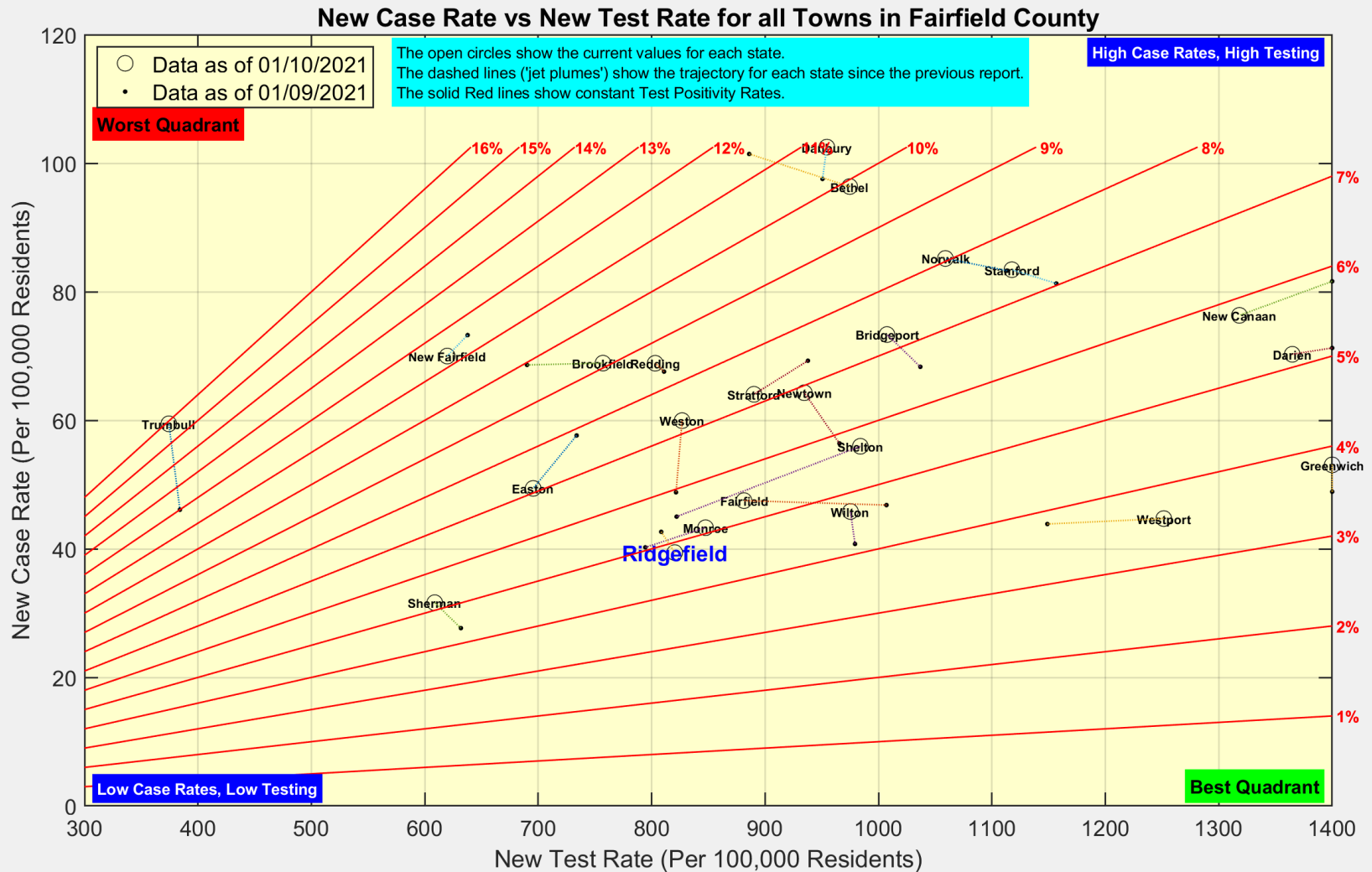
Data Source: <https://covidtracking.com/data/api>



Ridgefield COVID-19 Task Force



# Here is the latest view of New Cases and New Tests for all towns in Fairfield County



Data Source: <https://data.ct.gov>



Ridgefield COVID-19 Task Force