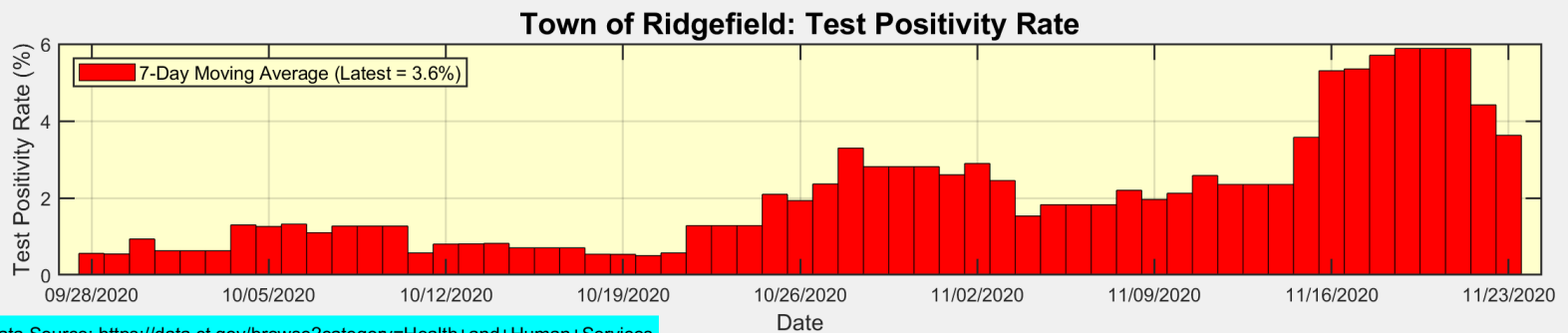
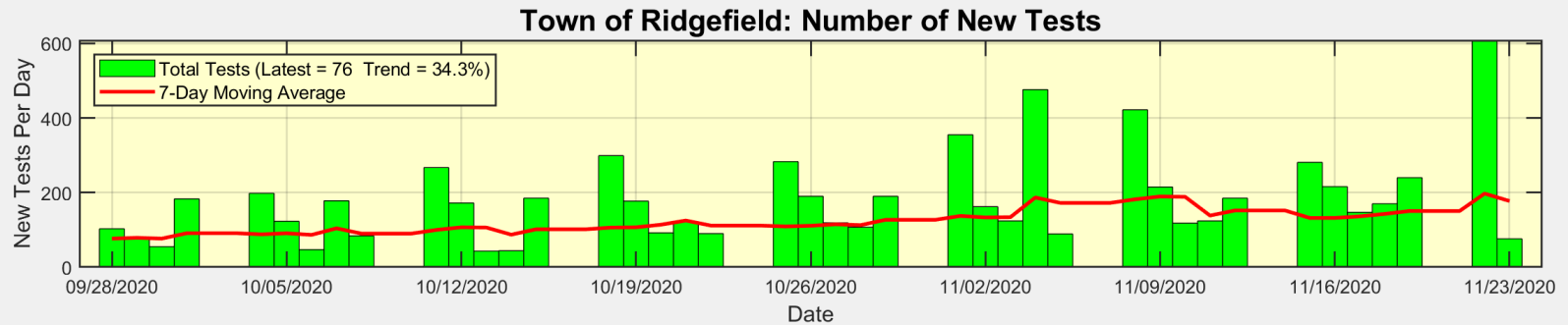
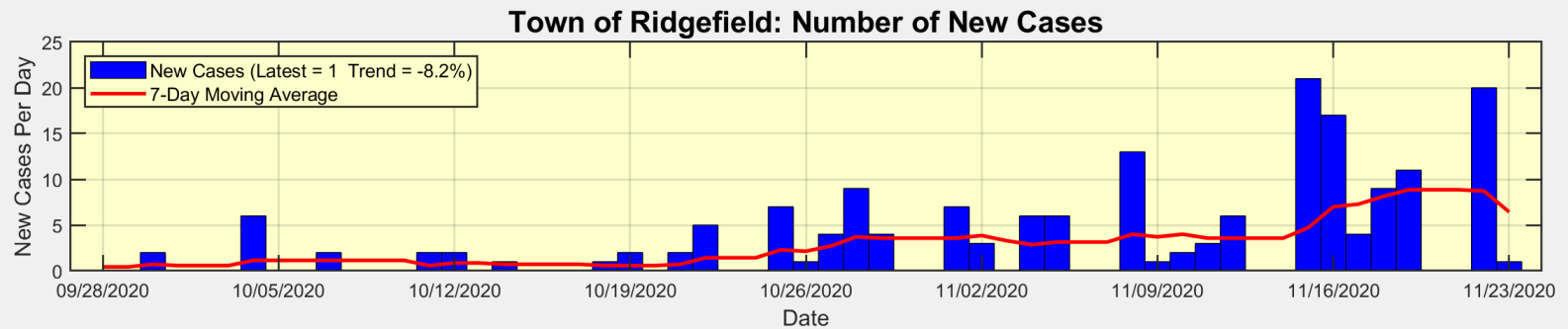


Ridgefield COVID Report

Ridgefield COVID-19 Task Force

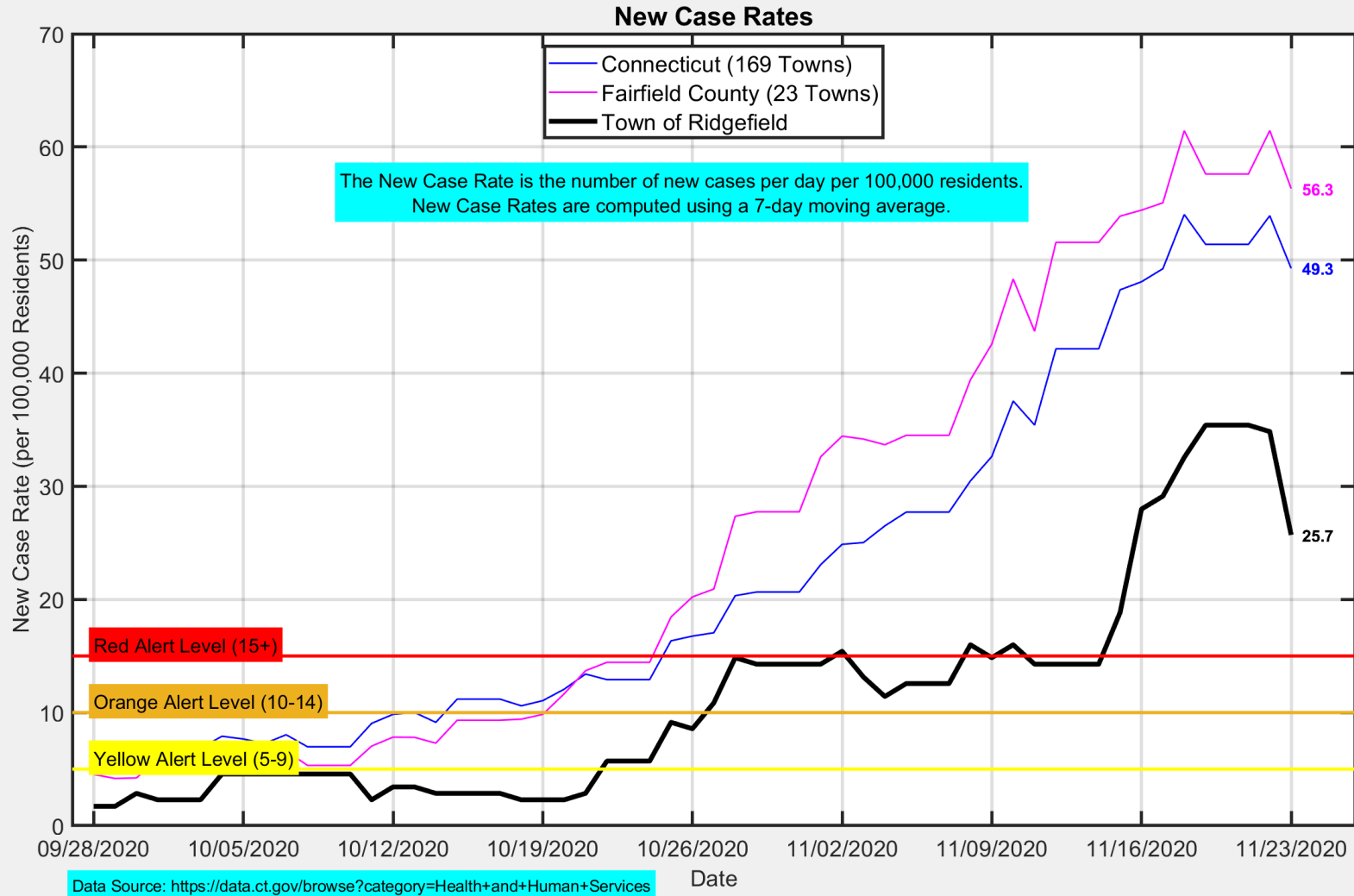
Data downloaded from
<https://data.ct.gov/browse?category=Health+and+Human+Services>
(as of Tuesday November 24, 2020 at 4PM)

There was only 1 new case reported in Ridgefield on Monday.

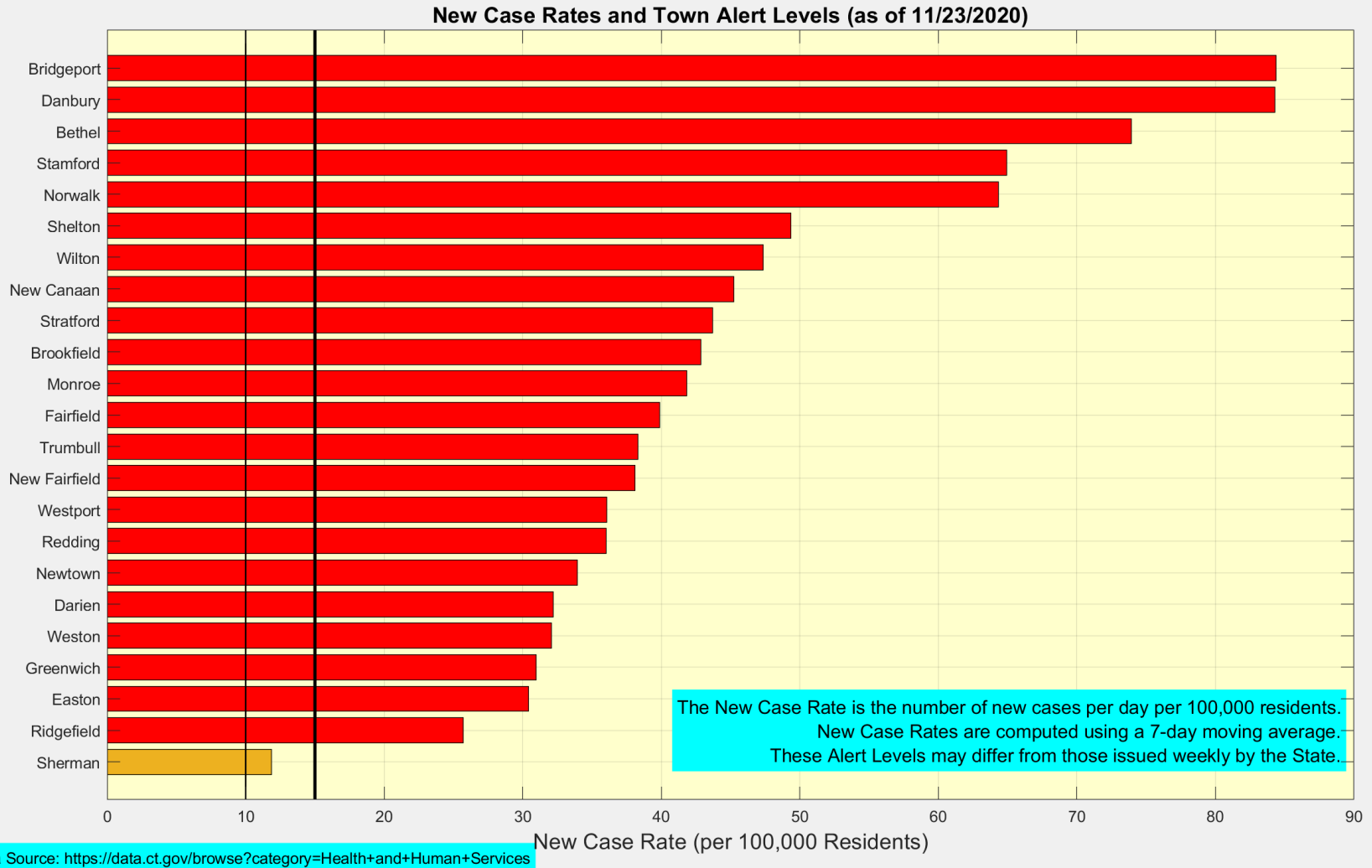


Data Source: <https://data.ct.gov/browse?category=Health+and+Human+Services>

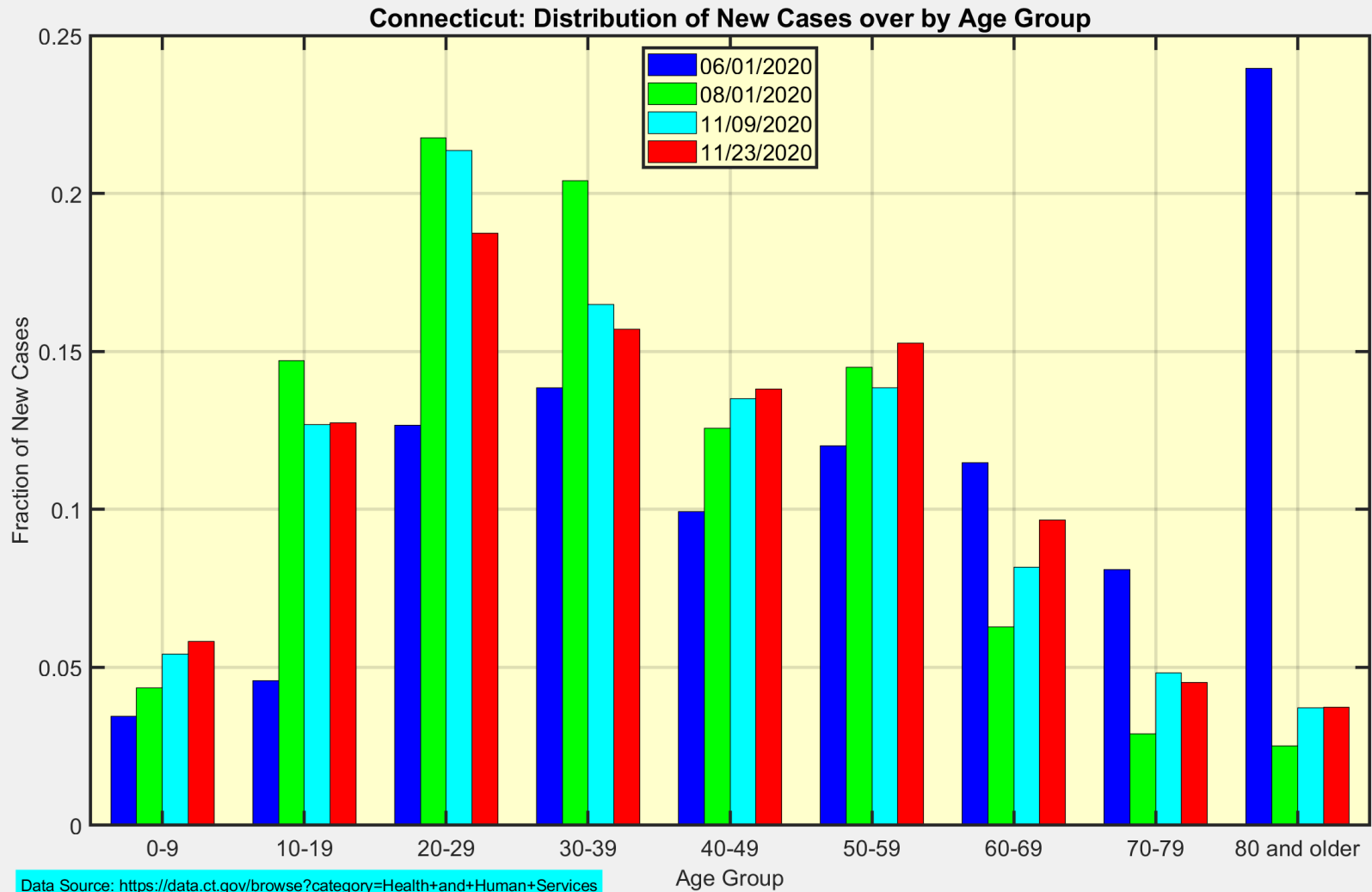
The Ridgefield New Case Rate decreased from 34.8 to 25.7 per 100,000 residents.



These are the latest New Case Rates for all towns in Fairfield County.

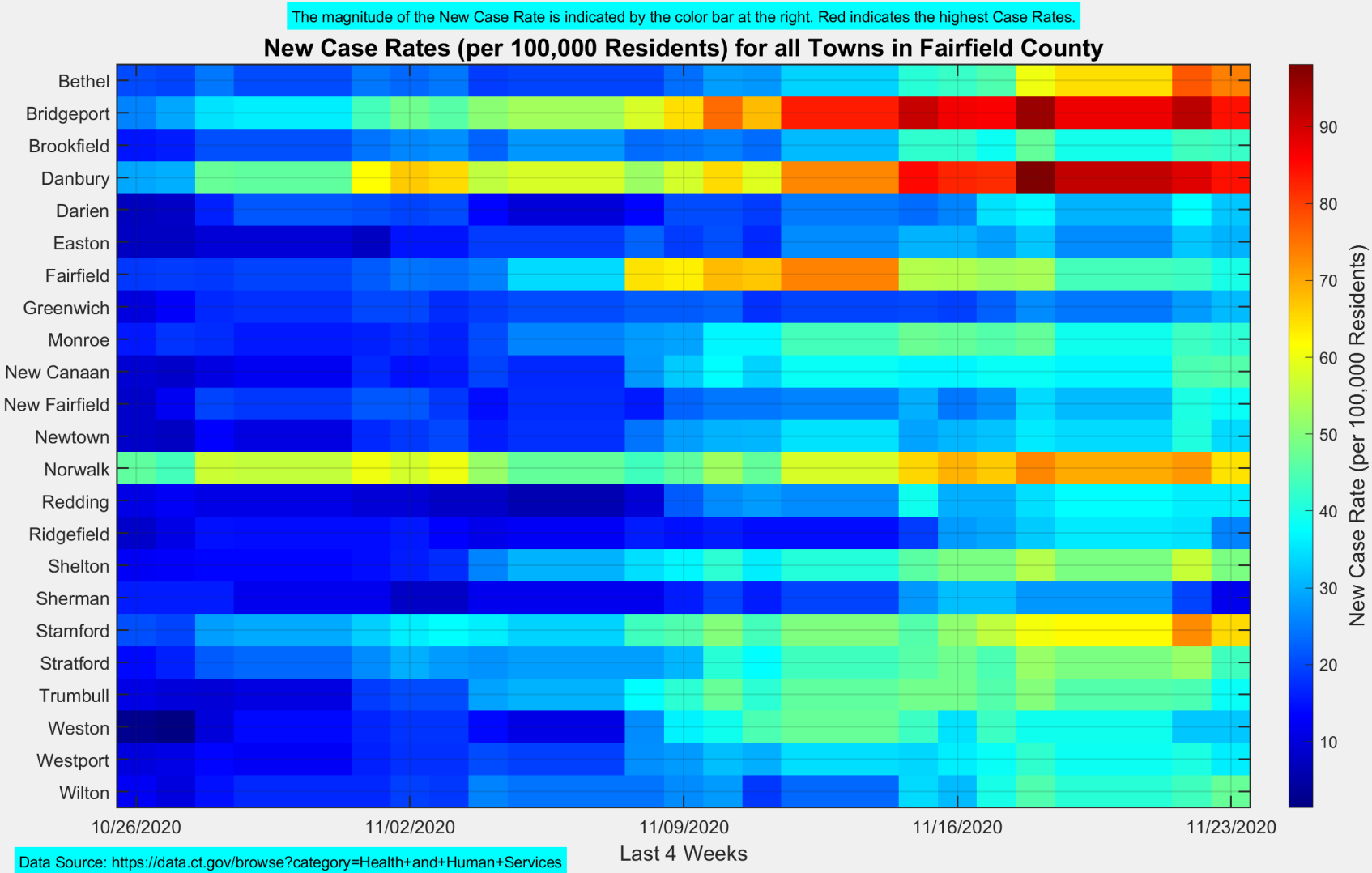


This is the distribution of New Cases over age group for the entire State of Connecticut.

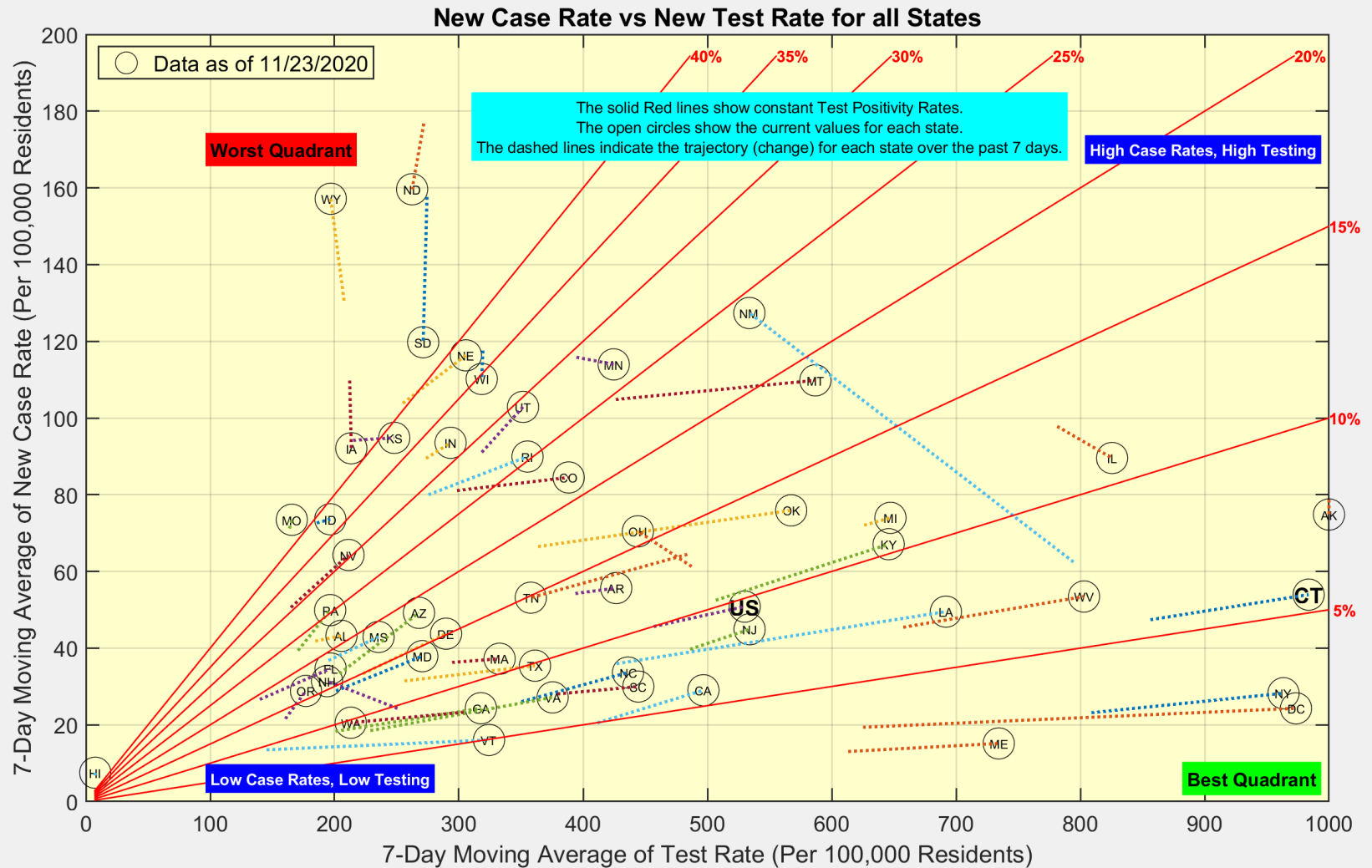


MORE DETAILED ANALYSIS FOLLOWS

This heat map shows the progression of New Case Rates for all towns in Fairfield County.

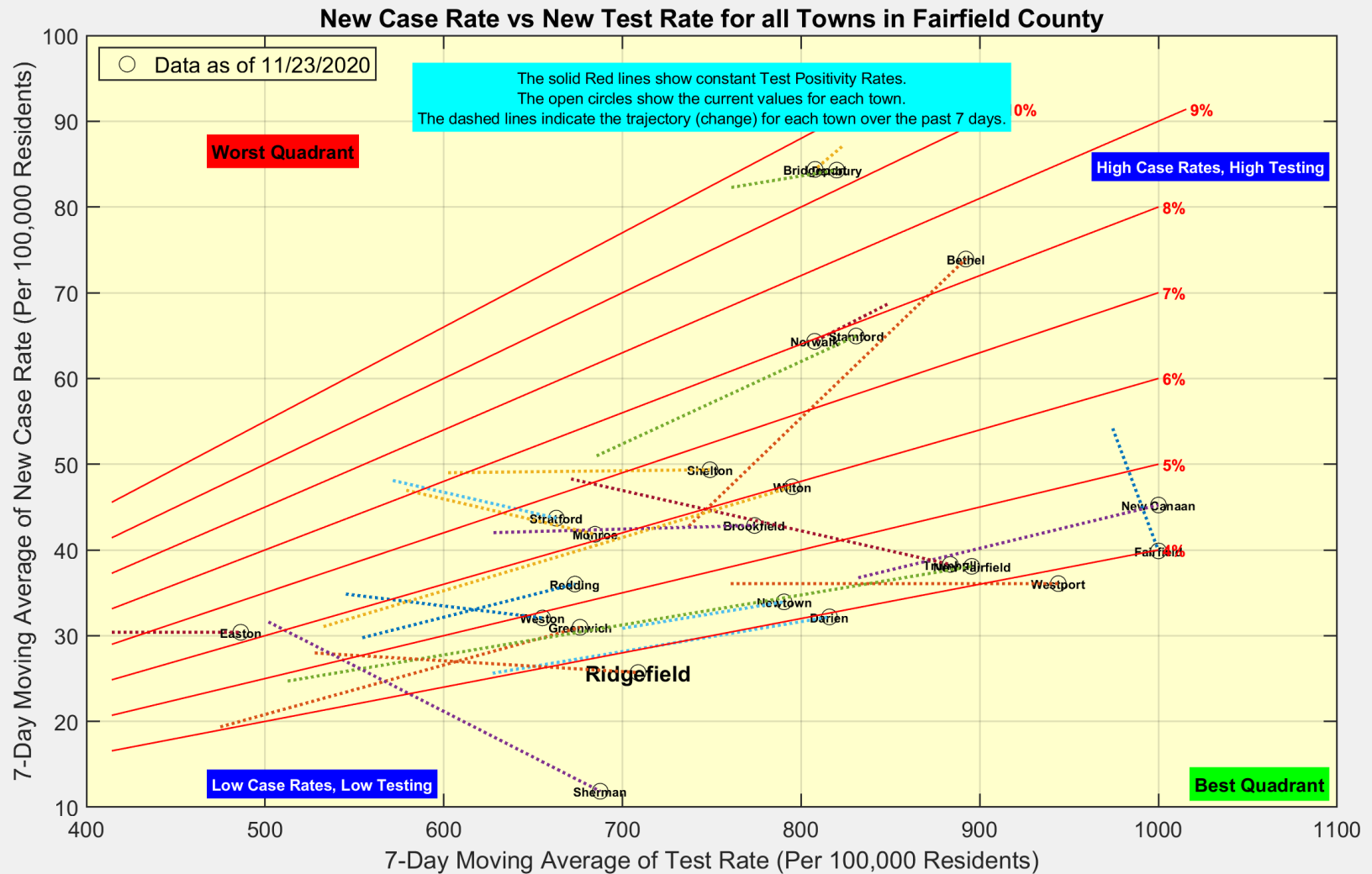


Connecticut has higher Test Rates than almost all states. Test Positivity is over 5%.



Data Source: <https://covidtracking.com/data/api>

Many Towns in Fairfield County are trending to lower Test Positivity.



Data Source: <https://data.ct.gov/browse?category=Health+and+Human+Services>