



Area 48 OLD SIB



Old Sib Trail

Size: 21 acres

ACCESS/PARKING: Old Sib Road, room for one or two cars is available on the west side of the road. [GPS Address: 405 Old Sib Road]

DIFFICULTY: Moderate, some steeper sections. 45 minutes.

FEATURES: There are two trails, both marked with yellow blazes. One is a loop trail and the other links to the Sal J. Prezioso Mountain Lakes Park in North Salem, NY.

Both trails start up a steep hill along the AT&T right of way past rocky outcrops. The loop trail exits this trail to the left, following a rocky spine past a woodland wetland and then up to the top of a ridge and through a mature forest. It comes down on the opposite side of the wetland and back to the right-of-way.



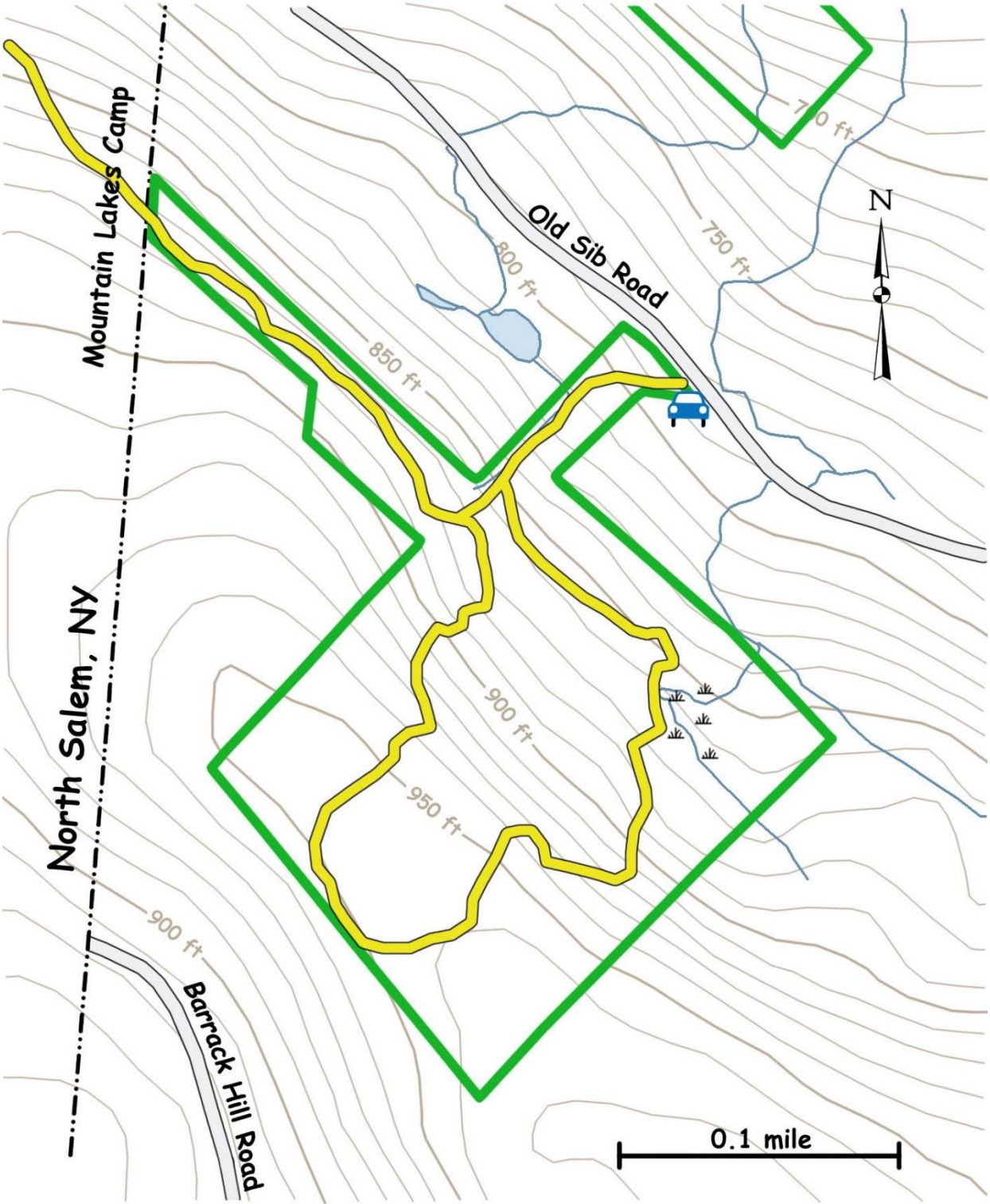
Mayapple

The other trail leaves the right of way a little higher and to the right. It travels through a significant stand of mountain laurel and ends at the OS trail of the Mountain Lakes trail system. A map of the trails in the Mountain Lakes trail system can be downloaded from <https://parks.westchestergov.com>

HISTORY: The property was purchased in 2006 using funds from the Open Space Conservation Fund of the Conservation Commission.



Area 48
OLD SIB



Legend

Open Space Boundary

Trail

Parking



Area 48 OLD SIB

