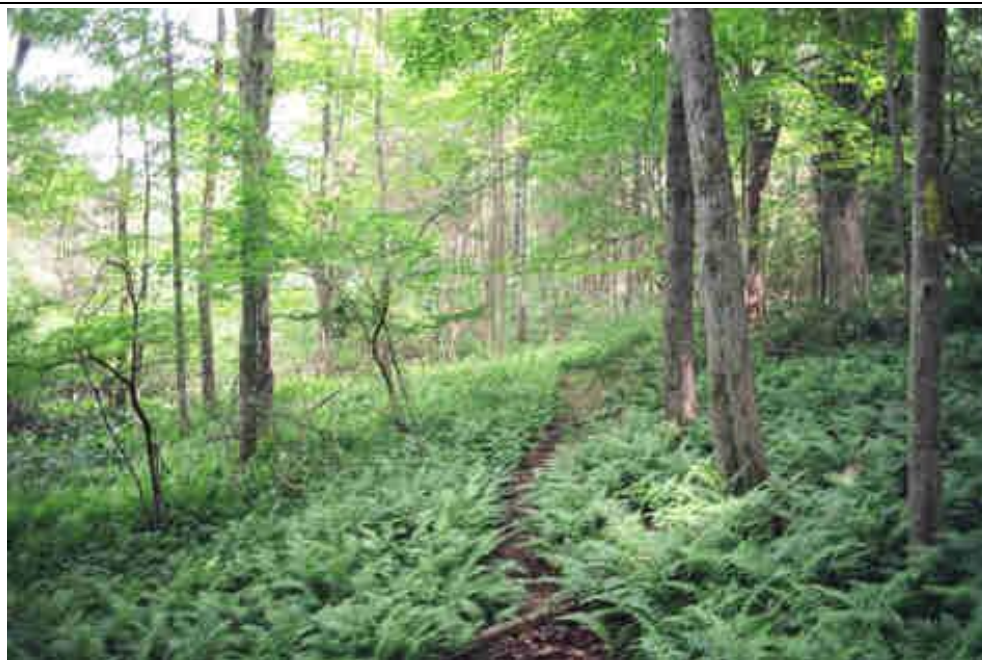




## Area 9

### KIAH'S BROOK REFUGE / TITICUS PRESERVE



Heading towards Ledges Road on the Yellow Trail

Size: 43 acres

**ACCESS/PARKING:** Barlow Mountain Road, northeast of the Barlow Mountain School; other trail entrances on the west side of Scotland School and Barlow Mountain School parking lots. Parking can be found at the Barlow Mountain School or Scotland School parking lots. [GPS Address: 100 Barlow Mountain Road]

**DIFFICULTY:** Easy. 1 hour.

**FEATURES:** Kiah's Brook Refuge and Titicus Preserve are a collection of land parcels dedicated to the protection of the Titicus River and its river habitat. A network of trails leads through the wetlands and forested uplands:

- The yellow trail is the main trail, follows the banks of the Titicus River with views of a swamp and brook. The northeast section can be wet or icy; if so, head directly south towards the schools.
- An inner red trail stays closer to the playing fields and buildings while the blue trails connect the inner and outer rings.



Kiah's Brook Refuge is a mixed evergreen forest that includes a larch grove in the northeast section. Spring wildflowers, ferns, and mosses are plentiful.

**CROSS-COUNTRY SKIING:** The red trail begins behind the northeast corner of Barlow Mountain School.

**FISHING:** Permitted under the regulations of the State of Connecticut Board of Fisheries and Game.

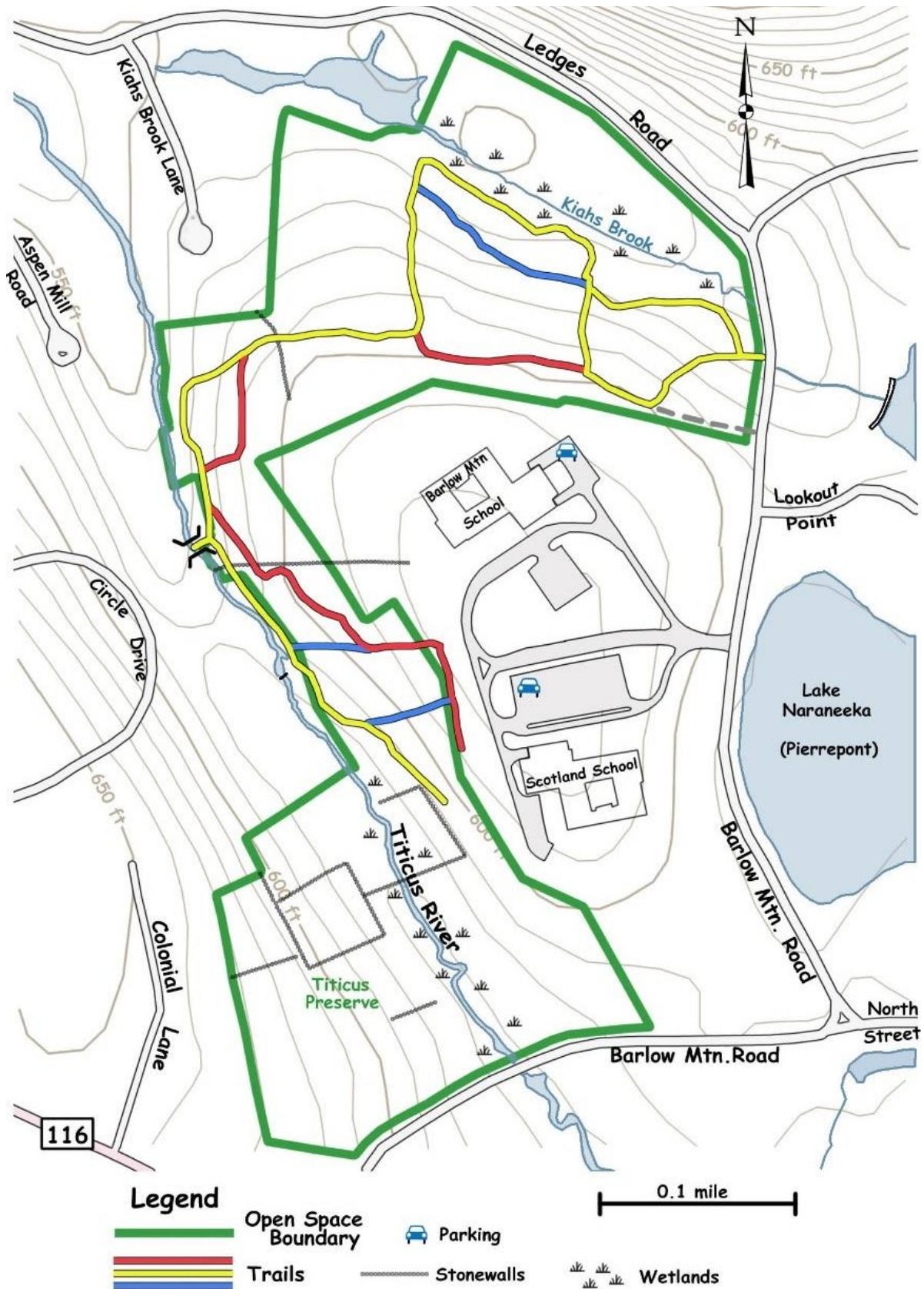
#### **Bloodroot**

**HISTORY:** The refuge gets its name from an eighteenth-century inhabitant named Hezekiah Scott, a weaver who operated a whiskey and cider distillery and a saw mill in the vicinity. The 12-acre refuge was given to the town by Evelyn Pierrepont Luquer in 1963 and 1964. The remaining 41 acres dedicated to conservation and recreation was purchased by the town with a grant-in-aid from the Connecticut Land and Water Conservation Fund.



## Area 9

### KIAH'S BROOK REFUGE / TITICUS PRESERVE







## Area 9

# KIAH'S BROOK REFUGE / TITICUS PRESERVE

